

JOB NUMBER:
1130
DATE:
09/08/11
REVISIONS:

A New Expansion for:
TWENTY - TWO FIFTY INTERIORS
Building C - Sugar Land Town Square

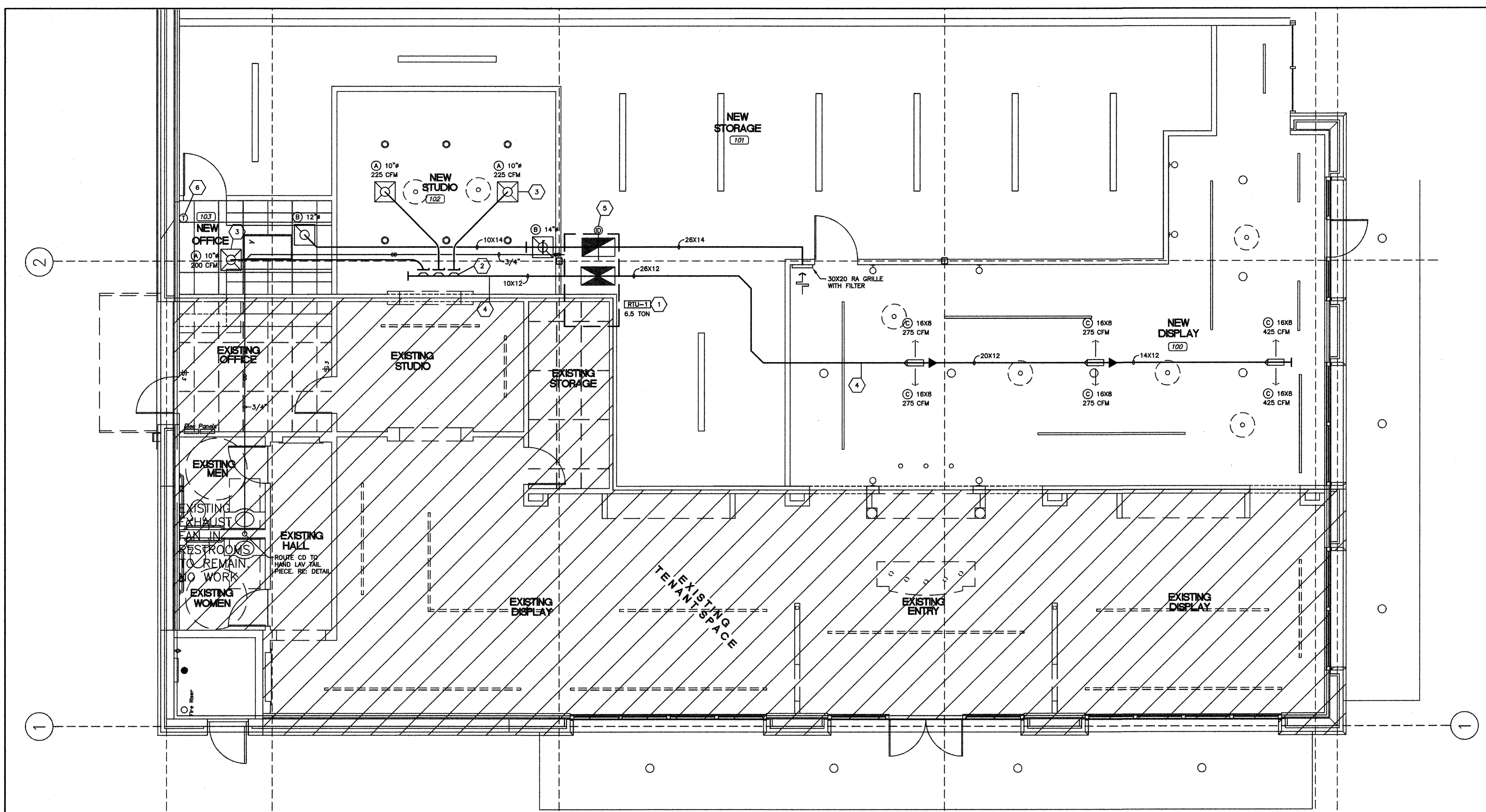
Sugar Land, Texas
2250 Lone Star Drive

JIM LAWLESS AIA
Architect & Planner
4610 Sweetwater Blvd
Suite 200-C
Sugar Land, Texas
77479
(281) 241-5101



THIS SEAL WAS AUTHORIZED THIS 09/08/11
PROJECT #11-810
H.M. McLEOD, P.E.
4727 MERRIN ST. SUITE B
HOUSTON, TEXAS 77057
OFFICE: (713) 961-2699
FAX: (713) 961-5661
CELL: (713) 806-1646
Firm Registration:
H. M. McLeod, P.E. #P-3879
© 2011 H.M. McLeod, P.E.
Drawings, written material, and design concepts shall not be used or reproduced, in whole or part in any form or format, without prior written consent of H.M. McLeod, P.E.

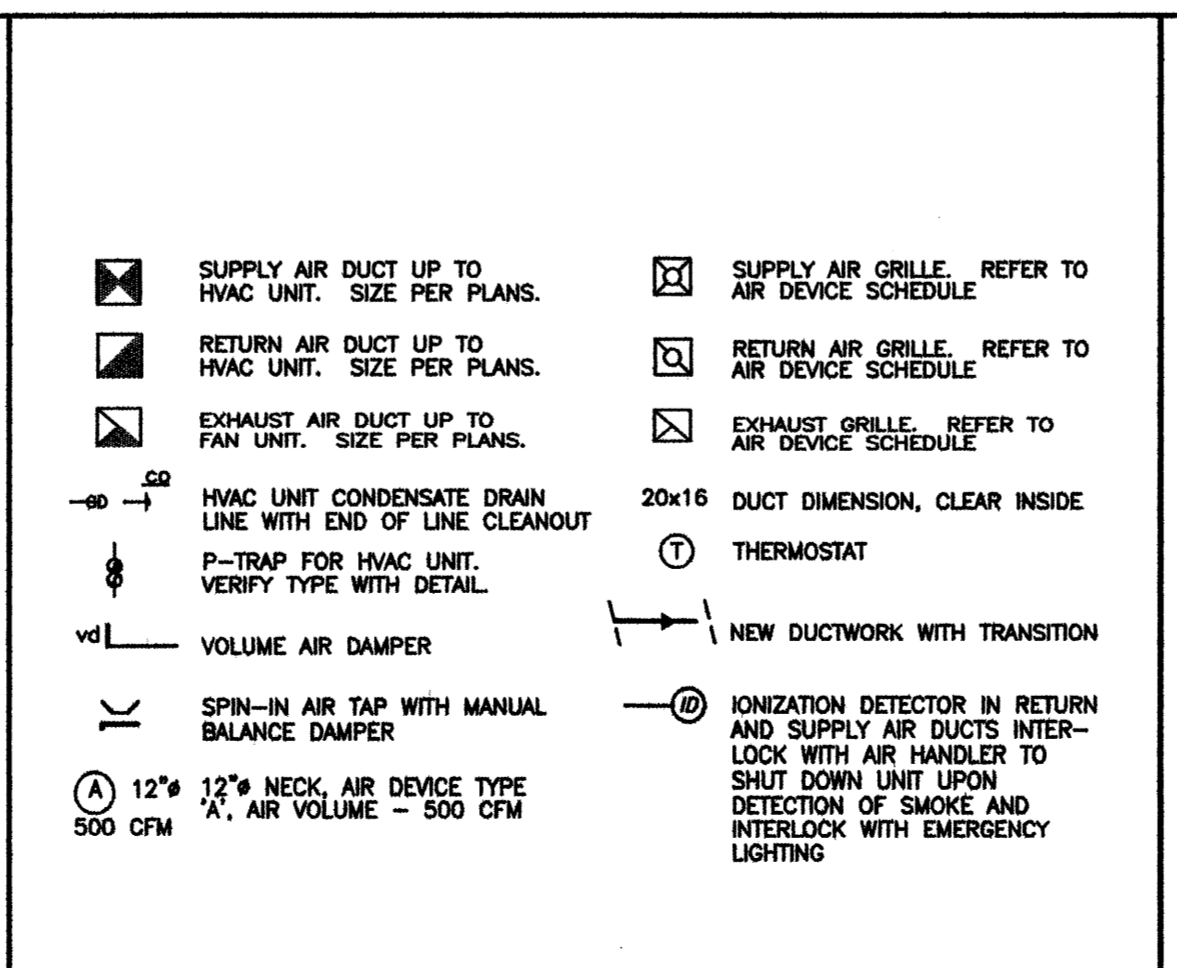
DRAWING:
FLOOR PLAN
MECHANICAL
M-1



5 FLOOR PLAN - MECHANICAL SCALE: 1/4" = 1'-0"

ALL DUCTWORK SIZES SHOWN ARE INSIDE FREE AREA DIMENSIONS.
CONTRACTOR SHALL FIELD VERIFY SIZE, LOCATION, ETC. OF STRUCTURAL FRAMING PRIOR TO DUCT FABRICATION. COORDINATE INSTALLATION OF DUCTWORK, EQUIPMENT, ETC. WITH EXISTING CONDITIONS.
PROVIDE NECESSARY OFFSETS TO MAINTAIN MINIMUM 15' DISTANCE BETWEEN OUTSIDE AIR INTAKES AND PLUMBING VENTS AND EXHAUST AIR OUTLETS. VERIFY EXACT LOCATIONS WITH ARCHITECT AND ENGINEER.
FIRE DAMPERS AS APPROVED BY LOCAL GOVERNING AUTHORITIES SHALL BE INSTALLED IN ALL DUCTWORK PASSING THROUGH A ROOF, FIRE PARTITION, OR FIRE WALL. PROVIDE ACCESS.
COORDINATE EXISTING AIR DEVICE LOCATIONS WITH NEW AND EXISTING LIGHT FIXTURES.
ROOFTOP UNITS SHALL NOT BE TALLER THAN THE PARAPET WALLS.
PROVIDE AND EXECUTE PENETRATIONS THROUGH ROOF MEMBRANE UNDER THE SUPERVISION OF LANDLORD'S ROOFING SUBCONTRACTOR - ANTEX ROOFING 281-872-6690

4 SHEET NOTES



3 MECHANICAL SYMBOLS

OUTSIDE AIR VENTILATION CALCULATION
PER 2008 CITY OF HOUSTON MECHANICAL CODE

CONDITIONED SPACE - 22-50 ADDITION	1421 S.F.
OUTSIDE AIR REQUIRED FOR OCCUPANCY	
DISPLAY	0.10 X 1008 S.F. = 100.8 CFM
OFFICE	0.08 X 103 S.F. = 8.2 CFM
STUDIO	0.50 X 310 S.F. = 155.0 CFM
TOTAL OUTSIDE AIR REQUIRED	264 CFM
MAKE UP AIR FROM HVAC UNITS	
RTU-1	6.5 TON = 350 CFM
TOTAL PROVIDED MAKE UP AIR	350 CFM

2 VENTILATION CALCULATION

- ROOF TOP UNIT SUPPLY AIR AND RETURN AIR DROPS FROM ROOF. COORDINATE ROUTING WITH STRUCTURE. PROVIDE DRAW-THRU TYPE P-TRAP AT RTU. REFER TO CONDENSATE DRAIN DETAIL. PROVIDE CLEAN OUT AT EACH CHANGE OF DIRECTION IN CONDENSATE DRAIN LINE. MECHANICAL CONTRACTOR TO ROUTE PIPING. ROUTE CONDENSATE DRAIN LINE TO DISCHARGE INTO EXISTING ROOF DRAIN. CONDENSATE DRAIN LINE TO BE SLOPE A MINIMUM OF 1/4" PER FOOT.
- SPIN-IN VOLUME AIR DAMPER. TYPICAL FOR SUPPLY AIR. REFER TO DETAIL.
- AIR GRILL MOUNTED IN LAY-IN CEILING/ GYPSUM BOARD. COORDINATE LOCATION WITH LIGHTING AND ARCHITECTURAL REFLECTED CEILING PLAN.
- SUSPEND SUPPLY TRUNK FROM STRUCTURE. REFER TO DETAILS.
- PROVIDE IONIZATION DETECTOR MOUNTED IN RETURN AIR PLENUM. UPON DETECTION OF SMOKE UNIT SHALL BE SHUT DOWN.
- PROVIDE AND INSTALL PROGRAMMABLE THERMOSTAT. REFER TO MECHANICAL SPECIFICATIONS.

1 MECHANICAL KEYED NOTES