

Tenant Location Map LONE STAR DRIVE

CODE DATA

OCCUPANCY GROUP M - FULLY SPRINKLERED TYPE II B
 ONE STORY RETAIL TENANT BUILD-OUT
 EXISTING 2,177 SF (USABLE) GROSS AREA
 1,543 SF MERCHANTILE AREA / 30 = 51 Occupants
 100 SF STORAGE AREA / 300 = 1 Occupants
 495 SF OFFICE AREA / 100 = 5 Occupants
 NEW 2,913 SF (USABLE) GROSS AREA
 1,000 SF MERCHANTILE AREA / 30 = 33 Occupants
 1,518 SF STORAGE AREA / 300 = 5 Occupants
 395 SF OFFICE AREA / 100 = 4 Occupants
 TOTAL 99 OCCUPANTS
 CORRIDORS NOT REQUIRED TO BE FIRE RATED WITH SPRINKLER SYSTEM
 300' MAX. EXIT ACCESS TRAVEL DISTANCE WITH SPRINKLER SYSTEM
 .15 x 99 = 14.85' MINIMUM EXIT WIDTH WITH SPRINKLER SYSTEM
 49 MALE & 50 FEMALE = 1 WC & 1 LAV FOR MALE /
 1 WC & 1 LAV FOR FEMALE

GENERAL NOTES:

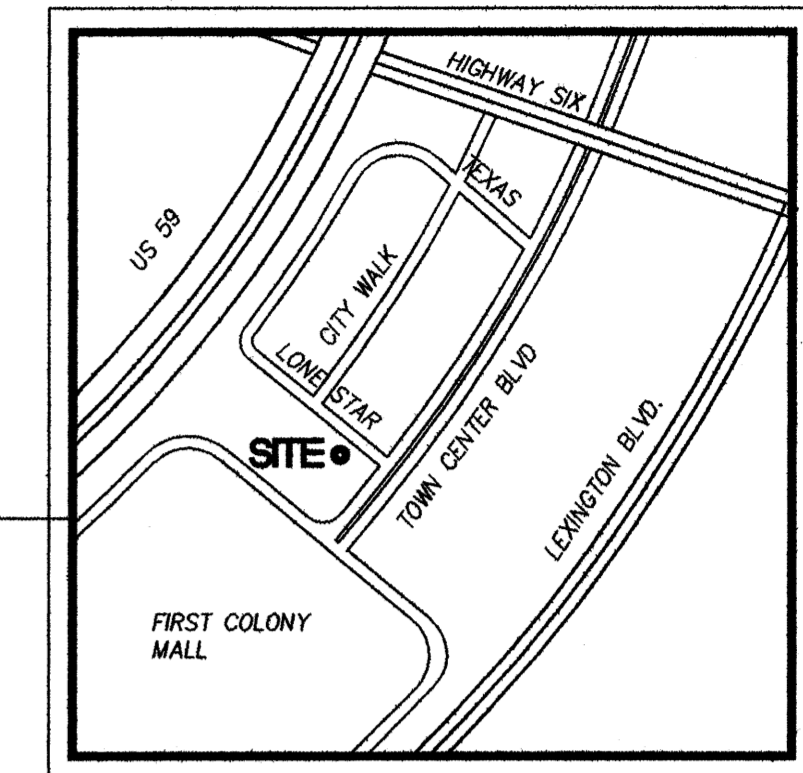
- ALL WORK TO COMPLY WITH 2009 INTERNATIONAL BUILDING CODE AND IN ACCORDANCE WITH ALL APPLICABLE STANDARDS, CODES, GUIDELINES AND ORDINANCES.
- CONTRACTOR TO VISIT THE JOBSITE AND VERIFY ALL EXISTING CONDITIONS PRIOR TO BID.
- ARCHITECT'S LIABILITY IS LIMITED TO AN AMOUNT NOT EXCEEDING THE FEES PAID FOR HIS SERVICES.
- ALL ELECTRICAL WORK TO BE IN ACCORDANCE WITH THE N.E.C. - CURRENT ADOPTED EDITION
- ALL PLUMBING WORK TO BE IN ACCORDANCE WITH THE I.P.C. - CURRENT ADOPTED EDITION
- ALL MECHANICAL WORK TO BE IN ACCORDANCE WITH THE I.M.C. - CURRENT ADOPTED EDITION
- TENANT SPACE TO BE 100% FIRE SPRINKLERED - RELOCATE EXISTING HEADS AND INSTALL NEW HEADS AS REQUIRED TO COMPLETE THE SYSTEM. PROVIDE SPRINKLER SYSTEM DRAWINGS TO THE CITY FOR APPROVAL PRIOR TO INSTALLATION.
- COORDINATE WITH PROJECT COORDINATOR FOR THE LOCATION OF THE TELEPHONES & FIRE ALARMS FIRETRON IS THE RECOMMENDED, HOWEVER NOT REQUIRED, FIRE ALARM SUBCONTRACTOR. (RECOMMENDATION BY LANDLORD) FIRETRON IS REQUIRED TO MAKE FINAL CONNECTION TO THE BUILDING PANEL. CONTACT TOM BALLOU 281-499-1500. TENANT REQUIRED TO RUN A NEW CONDUIT TO THE FIRE ROOM
- PROVIDE PORTABLE FIRE EXTINGUISHERS PER NFPA 10

GENERAL NOTES:

- PROVIDE AND INSTALL A KNIX BOX AS PER THE IFC 2003 CHAPTER 5, SECTION 506
- PROVIDE AND INSTALL FIRE EXTINGUISHERS TO MEET IFC 2003 CHAPTER 9, SECTION 903
- PROVIDE AND INSTALL FIRE ALARM SYSTEM FOR SPRINKLER SYSTEM TO MEET IFC 2003 EDITION, CHAPTER 9 SECTION 903 AND NFPA 72.

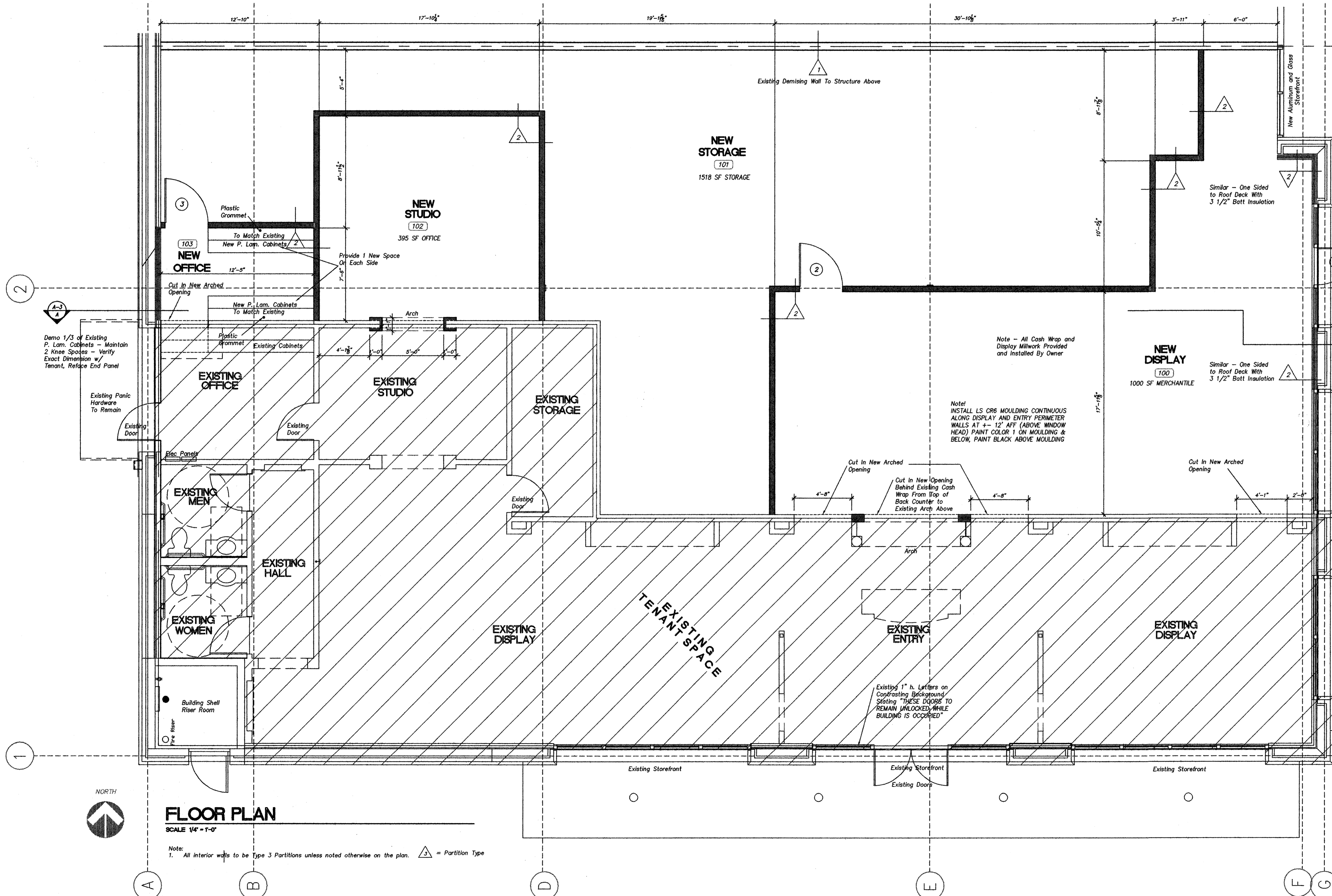
AREA :

GROSS AREA NEW EXPANSION 2,913 SF
 (INSIDE FACE OF PERIMETER WALLS)
 GROSS AREA EXISTING 2,177 SF
 GROSS AREA TOTAL 5,090 SF



Vicinity Map

For New Storefront See Exterior Elevations on Sheet A-3



DRAWING INDEX:

- A-1 FLOOR PLAN
- A-2 REFLECTED CEILING PLAN
- A-3 ELEVATION & SECTION
- A-4 SCHEDULES & DETAILS
- TAS-1 ACCESSIBILITY DETAILS
- TAS-2 ACCESSIBILITY DETAILS
- M-1 MECHANICAL PLAN
- M-2 MECHANICAL DETAILS
- E-1 LIGHTING PLAN
- E-2 POWER PLAN
- E-3 SCHEDULE AND DETAILS
- E-4 SCHEDULE'S ESPECS.

FLOOR PLAN

SCALE 1/4" = 1'-0"

Note: 1. All interior walls to be Type 3 Partitions unless noted otherwise on the plan. \triangle = Partition Type

DOCUMENT APPROVAL

Preliminary Plan Approved: _____

Revised & Approved By: _____ Date: _____

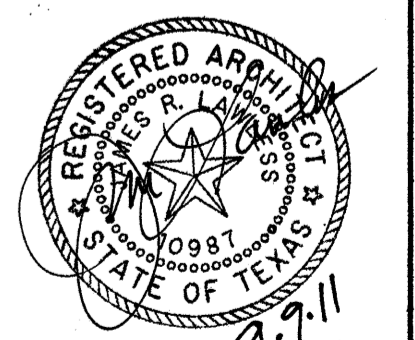
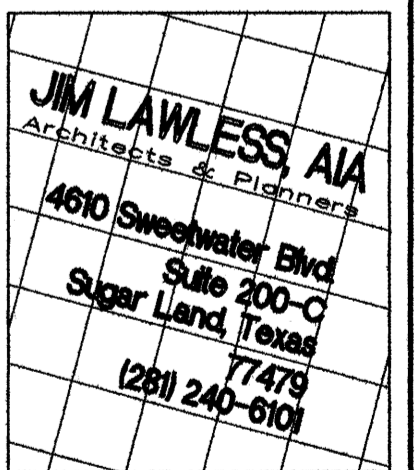
Revised & Approved By: _____ Date: _____

Revised & Approved By: _____ Date: _____

Note - Documents must be approved before progressing to the next phase. All revisions to be initiated by the Owner & Builder.

JOB NUMBER: 1130
 DATE: August 12, 2011
 REVISIONS:

A New Expansion for:
TWENTY - TWO FIFTY INTERIORS
 Building Q - Sugar Land Town Square
 2250 Lone Star Drive
 Sugar Land, Texas



DRAWING: Floor Plan

A-1
 1 of
 COPYRIGHT © 2011
 JIM LAWLESS, AIA