

A	QUESTON PENANT	3 x 32W CFL
B	TRACK LIGHT: ELCO	ET528B MR16 50 W HEADS
B2	1 TRACK LIGHT: ELCO	ET528B MR16 50 W HEADS
C	LIGHT PLEXION WHITE ACQUENT LIGHT	120V 2.39W/FOOT
D	6 RECESSED CAN ELCO EL2742H4 1	42W QULD PL1 CFL 120/277V
E	2 X24 LAM IN PROPER METALUX 268R	22-33W 120/277V
F	AMERICAN TOULING DEGRADING LIGHT	MR16 50W 120V
G	AMERICAN TOULING DEGRADING LIGHT	MR16 50W 120V
H	11130B-BR-50-36 "BLACK MR16 50W 120V	
H8	11130B-BR-50-36 "BLACK MR16 50W 120V	
I	11130B-BR-50-36 "BLACK MR16 50W 120V	
J	11130B-BR-50-36 "BLACK MR16 50W 120V	
K	SSR-232-UW-EB81 U-44-X-Client/541	1W-SSR-4FT
L	CHAIN HUNG STRIP LIGHT 2-32W/8" LAMP	120V 50W
M	LED-LED-UW-VERITY, IR-LED-EX3, DL-CLIP/SGREW	
UR	LED-LED-UW-VERITY, IR-LED-EX3, DL-CLIP/SGREW	
LM	LED-LED-UW-VERITY, IR-LED-EX3, DL-CLIP/SGREW	

- OE** EXTERIOR SURFACE MOUNTED FIXTURE WITH BATTERY BACK UP 90 MIN. EGRESS 120 VOLT /76 WATT FLUORE. LAMP VERRY MOUNTING ABOVE EXIT DOOR - 90 MINUTE BATTERY.
- EG** TYPE II, MOUNTED EMERGENCY/EGRESS LIGHTING FIXTURE. 120VAC, 76WATT, 120VOLT, 120VOLT, 120VOLT, 120VOLT HEADS. 120 VOLT CONNECTION "UL" LISTED SELF CONTAINED GLO. TUNGSTEN LAMPS W/SEALED LEAD CALCIUM BATTERY. W/BATTERY BACK UP - 90 MINUTE BATTERY.
- EX** DATA KEY EXT LIGHT FIXTURE SURF-LITE PREPENDOR TYPE LED. EMLTING. MODEL # 122AC-W-M-P PENDMONT MODELT 120 volt CONNECTION WITH RED LED. W/ 90 MINUTE BATTERY BACKUP.

EMERGENCY POWER SUPPLY AND EMERGENCY LIGHTS SHALL BE SUPPLIED FOR EXIT SIGNS AND EMERGENCY LIGHTS PROVIDED BY PREMISES WIRING SYSTEM. IN THE EVENT OF NORMAL POWER FAILURE ILLUMINATION SHALL BE AUTOMATICALLY PROVIDED FROM AN EMERGENCY POWER-BATTERY BACKUP, TO ENSURE CONTINUED ILLUMINATION PER SECTION 1005.2.10.5, I.B.C. 2003 EDITION

1. ELECTRICAL CONTRACTOR TO MEET ALL REGULATIONS AND REQUIREMENTS OF THE NATIONAL ELECTRICAL CODE 2005
2. REFER TO SHEET E-5 FOR ELECTRICAL PANEL SCHEDULES AND LOAD ANALYSIS.
3. ALL HANDOFF REQUIREMENTS TO MEET A.D.A. STATE OF TEXAS AND FEDERAL REQUIREMENTS.
4. CONTRACTOR TO VERIFY ALL EXISTING CONDITIONS PRIOR TO CONSTRUCTION.
5. VERIFY ALL EQUIPMENT DIMENSIONS AND LOCATIONS WITH ARCHITECTURAL AND FIXTURE PLANS.
6. DO NOT SCALE THESE DRAWINGS FOR DIMENSIONAL INFORMATION. EXISTING FIELD CONDITIONS CONTRA TO THE ARCHITECTS OR AN ENGINEER'S FIELD NOTATION SHALL PREVAIL.
7. COORDINATE ALL WORK WITH EACH SUB CONTRACTOR AND PROVIDE CONTRACTOR WITH SCHEDULING OF ALL ELECTRICAL AND PLUMBING PRIOR TO INSTALLATION AND CONNECTION TO EQUIPMENT.
8. ALL FIRE PROTECTION TO MEET NFPA REGULATIONS AS SPECIFIED BY LOCAL.
9. ALL WORK TO MEET INTERNATIONAL BUILDING CODE REQUIREMENTS 2009.

ABV	ABOVE	QAL	GALLONS
AF	ABOVE FINISHED FLOOR	HAL	HOT WATER
AHU	AIR HANDLING UNIT	IE	INVERT ELEVATION
ARCH	ARCHITECTURAL	IK	INTERMITS
BOD	BOTTOM OF DUCT	LAV	LAVATORY
BUILD	BUILDING	MAX	MAXIMUM
CL	CAST IRON	MECH	MECHANICAL
CE	CENTER LINE	MIN	MINIMUM
CO	CLEANOUT	MND	MINIMAL VOLUME DAMPER
COC	CLEANOUT AT GRADE	MOD	MODIFIED
CONC	CONCRETE	NC	NOT IN CONTACT
CONN	CONNECTION	NK	NEAR
COOL	Cooling	NR	NORTH
CORR	CORROSION	OB	OBSCURED BLUE DAMPER
CST	CAST STEEL	ODD	ODD
CWD	COLD WATER	PS	POUNDS PER SQUARE INCH
DIA	DIAMETER	PR	PRESSURE
DNG	DRAWING	PRD	PRESSURE REDUCING VALVE
ELEC	ELECTRICAL	RA	RETURN AIR
EF	EXHAUST FAN	RD	ROOF DRAIN
EMI	ELECTRIC WATER HEATER	SA	SUPPLY AIR
FV	FIRE DEPARTMENT WAVE	SP	SUPPLY FAN
FCO	FLOOR CLEANOUT	SP	STATE PRESERVE
GLV	GALVANIZED	SPC	SPECIFICATIONS
		TY	TYPICAL

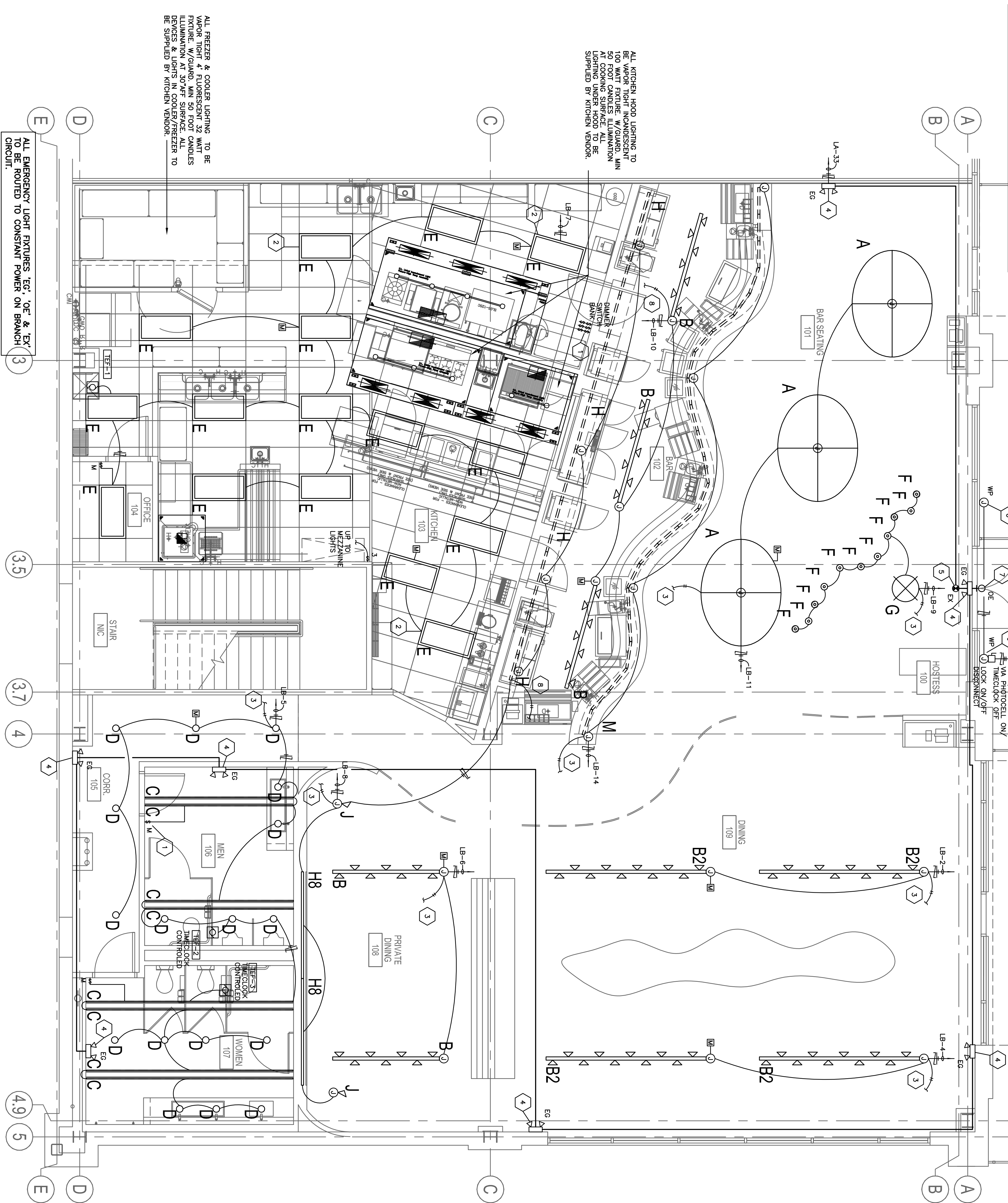
- 1 MOUNT ALL SWITCH DEVICES IN ACCORDANCE TO STATE OF TEXAS A.J.C. MOUNTING HEIGHT STANDARDS. REFER TO DETAIL 100.
- 2 LOCATION LIGHTING FIXTURE IN LAY-IN CEILING GRID. COORDINATE LOCATION AND GRID WITH ARCHITECTURAL, REFLECTED CEILING PLAN.
- 3 ROUTE SWITCH LEG TO LIGHTING PANEL, IE, IN KITCHEN. ALL INDEPENDENT LIGHTING AND TRACK LIGHTS TO BE CONTROLLED BY DIMMERS WITH THEMLOCK MASTER CONTROL ON/OFF.
- 4 TITLE OR 6" ABOVE EXIT LIGHT. PROVIDE CONSTANT 120 VOLT POWER. REF. TO FUTURE SCHEDULE.
- 5 BATTERY BACK-UP EXIT LIGHT MOUNTED FROM CEILING. PROVIDE SCHEDULE ON THIS SHEET. REFER TO LIGHTING FUTURE.
- 6 WEATHER PROOF (WATER RESISTANT) JUNCTION BOX MOUNTED INSIDE OF SLOTTED FOR FOR EXTERIOR STORAGE. COORDINATE LOCATION WITH SIGN CONTRACTOR.
- 7 EXTERIOR SURFACE MOUNTED EGRESS FIXTURE ABOVE EXIT DOOR. BATTERY BACK UP.

ALL CONSTRUCTION APPLICATIONS FOR INSTALLATION TO FOLLOW THE CODES LISTED BELOW:

2000	UNIFORM MECHANICAL CODE
2003	INTERNATIONAL BUILDING CODE
2000	UNIFORM PLUMBING CODE
2008	NATIONAL ELECTRICAL CODE
2000	INTERNATIONAL FUEL GAS CODE
2008	HECC Houston ENERGY CODE

ALL CONSTRUCTION APPLICATIONS FOR INSTALLATION TO FOLLOW THE CODES LISTED BELOW:

2000	UNIFORM MECHANICAL CODE
2003	INTERNATIONAL BUILDING CODE
2000	UNIFORM PLUMBING CODE
2008	NATIONAL ELECTRICAL CODE
2000	INTERNATIONAL FUEL GAS CODE
2008	HECC Houston ENERGY CODE



SCALE: 1/4" = 1'-0"

4601 Washington Ave
Houston, TX 77007

Gensler
Houston, Texas / 700
Tel: 713.844.0000
Fax: 713.844.0001

711 Louisiana
Suite 300
Houston, Texas 77002
Tel: 713.844.0000
Fax: 713.844.0001

	Issue	Date & Issue Description	By	Check
-	01	05/19/10 PERMIT/CONSTRUCTION		

Seal/Signature

PROJECT #10082
H.M. MCLEOD, P.E.

4727 MERWIN ST. SUITE B
HOUSTON, TEXAS 77027
OFFICE: (713) 961-2699
FAX: (713) 961-5691

Firm Registration:
H. M. McLeod, P.E. #F-3679
© 2010 H.M. McLeod, P.E.

THIS SEAL WAS AUTHORIZED
THIS DATE: 05/19/10

Project Name _____

Drawings, written material, and design
concepts shall not be used or reproduced
whole or part in any form or format without
prior written consent of H.M., McLeod, P.E.

TOLA

Project Number

CAD File Name

Description

**FLOOR PLAN
LIGHTING**

Scale

0 2 4 8 16

四

4601 Washington Ave
Houston, TX 77007

Gensler

PROJECT #10082
H.M. MCLEOD, P.E.

4727 MERRIN ST. SUITE B
HOUSTON, TEXAS 77027
OFFICE: (713) 961-2699
FAX: (713) 961-5691

Firm Registration:
H. M. McLeod, P.E. #F-3679
© 2010 H.M. McLeod, P.E.

Drawings, written material, and design concepts shall not be used or reproduced in whole or part in any form or format without prior written consent of H. M. McLeod, P.E.

CAD File Name

Description

Scale



三ノ

WALK-IN COOLER/FREEZER HEAT
TRACE AND DOOR HEATER TO BE
GFCI PROTECTED WITH A GFCI
BREAKER

ALL RECEPTACLES IN KITCHEN
AREA, BAR AREA, AND PREP AREA TO
BE GFCI PROTECTED WITH A GFCI
BREAKER

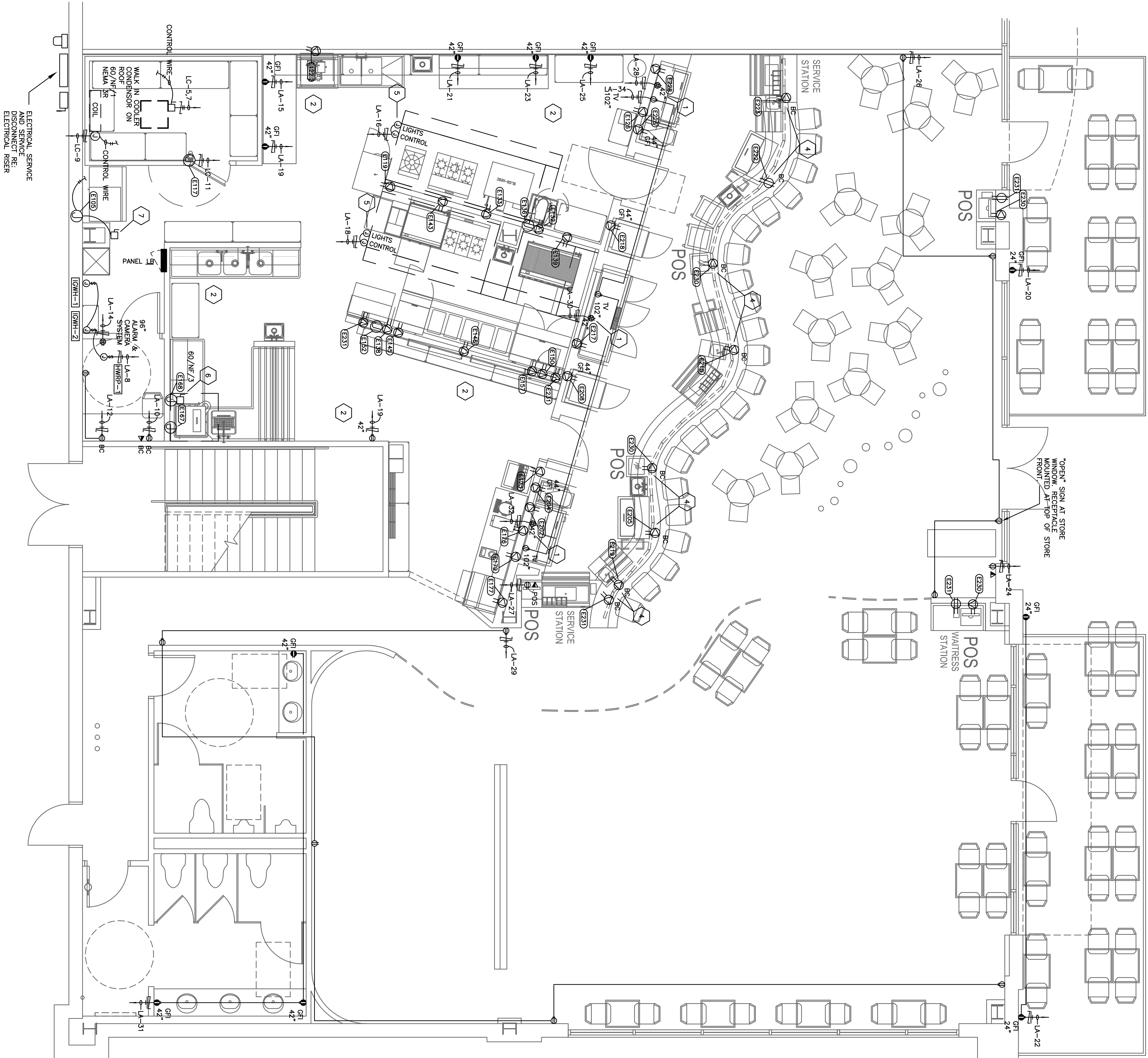
4 SHEET NOTES

- FLUORESCENT LIGHTING FIXTURE
- FLUORESCENT FIXTURE FOR NIGHT LIGHTING
- LIGHTING FIXTURE
- EXIT SIGNS
- TELEPHONE OUTLET; SINGLE GANG BOX W/ COVER PLATE IN WALL WITH 3/4" C ROUTED TO CEILING SPACE.
- PANEL BOARD
- NEW METER BY LIGHT COMPANY
- DATA OUTLET; SINGLE GANG BOX W/ COVER PLATE IN WALL WITH 3/4" C ROUTED TO CEILING SPACE
- JUNCTION BOX (HEIGHT NOTED ON PLAN)
- DUPLEX RECEPTACLE
- 220 VOLT RECEPTACLE. COORDINATE WITH EQUIPMENT
- DOUBLE DUPLEX RECEPTACLE
- ISOLATED GROUND RECEPTACLE
- GROUND FAULT INTERRUPT RECEPTACLE (GFI)
- WALL SWITCH
- THREE-WAY WALL SWITCH
- WALL BOX DIMMER, NUMBER = RATING IN WATTS
- WALL SWITCH WITH PILOT LIGHT - WIRE FOR 'ON' POSITION
- FUSIBLE DISCONNECT
- MANUAL MOTOR STARTER
- GROUND
- 100/80/3
- SIZE 2
- 11-4.5.8
- BRANCH CIRCUIT HOMERUN WITH GROUND WIRE TO LAST WIRE TO BE CONNECTED TO BRANCH CIRCUIT
- REFER TO KEYED NOTE 4
- NEA CONDUITATION RECEPTACLE
- CONDUIT RISE WITH EQUIPMENT TO BE CONNECTED
- THERMOSTAT MOUNTED TO MEET A.D.A. REQ.
- INITIATION DETECTOR IN RETURN AND SUPPLY AIR DUCTS INTERLOCK WITH AIR HANDLER TO SHUT DOWN SYSTEM IN CASE OF SMOKE INTERLOCK WITH EMERGENCY LIGHTING
- ELECTRICAL DISCONNECT. REFER TO RISER FOR SIZE

3 ELECTRICAL NOTES

- MOUNT RECEPTACLE ABOVE TABLE TOP AT 42" AFF. COORDINATE EXACT HEIGHT WITH MILLWORK CONTRACTOR AND/OR ARCHITECT.
- REFER TO UTILITY DRAWINGS FOR ELECTRICAL DEVICE MOUNTING HEIGHTS AND NEA RECEPTACLE CONFIGURATIONS.
- LIGHTING CLASS PANELS - REFER TO PANEL SCHEDULES
- MOUNT ELECTRICAL RECEPTACES, PHONE OUTLET, AND DATA OUTLETS TO BE 48" ABOVE FINISHED FLOOR TO MEET A.D.A. REQUIREMENTS. COORDINATE WITH TENANT FOR EXACT LOCATION OF ALL OUTLETS.
- PROVIDE 120 VOLT UNSWITCHED POWER FOR KITCHEN HOOD ANSUL FIRE PROTECTION SYSTEM.
- PROVIDE ELECTRICAL CONNECTION TO DISMISHER. VERIFY ELECTRICAL REQUIREMENTS AND VERIFY LOCATION.
- PROVIDE ELECTRICAL CONNECTION TO ICE MACHINE. VERIFY ELECTRICAL REQUIREMENTS AND ROUTE CONTROL WIRING AS REQUIRED FOR REMOTE CONDENSING UNIT.

2 POWER KEYED NOTES



1 FLOOR PLAN POWER

SCALE: 1/4" = 1'-0"

TOLA
RESTAURANT

4601 Washington Ave
Houston, TX 77007

711 Louisiana
Suite 300
Houston, Texas 77002
Tel: 713.844.0000
Fax: 713.844.0001

Gensler

Issue	Date & Issue Description	By	Check
01	05/19/10 PERMIT/CONSTRUCTION		

Project #10082

H.M. McLEOD, P.E.

4727 MERRIN ST. SUITE B
HOUSTON, TEXAS 77057
OFFICE: (713) 961-2899
FAX: (713) 961-0691

H. M. McLeod, P.E.
Professional Engineer
No. 14474
© 2010 H.M. McLeod, P.E.

This seal was authorized
this date: 05/19/10
Overseas: will not be used on design
work or part in any form or format without
prior written consent of H.M. McLeod, P.E.

Project Name

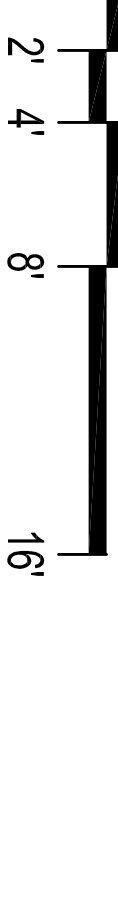
Project Number

CAD File Name

Description

FLOOR PLAN
POWER

Scale



E-2.1

TQLA
RESTAURANT

4601 Washington Ave
Houston, TX 77007

Gensler

711 Louisiana
Suite 300
Houston, Texas 77002
Tel: 713.844.0000
Fax: 713.844.0001

Issue	Date & Issue Description	By	Check
01	05/19/10 PERMIT/CONSTRUCTION		

Seal/Signature

PROJECT #10082

H.M. McLEOD, P.E.

4727 MERRIN ST. SUITE B
HOUSTON, TEXAS 77057
OFFICE: (713) 961-2899
FAX: (713) 961-0691

H. M. McLeod, P.E.
Professional Registration #2879

© 2010 H.M. McLeod, P.E.

This seal was authorized
THIS DATE: 05/19/10
Overseas: shall not be used on design
in whole or part in any form or format without
prior written consent of H.M. McLeod, P.E.

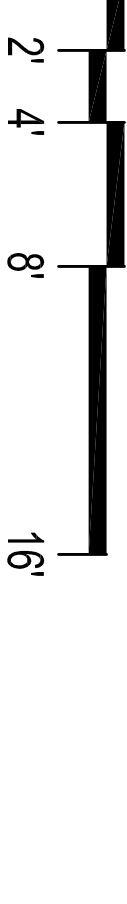
TQLA

Project Number

CAD File Name

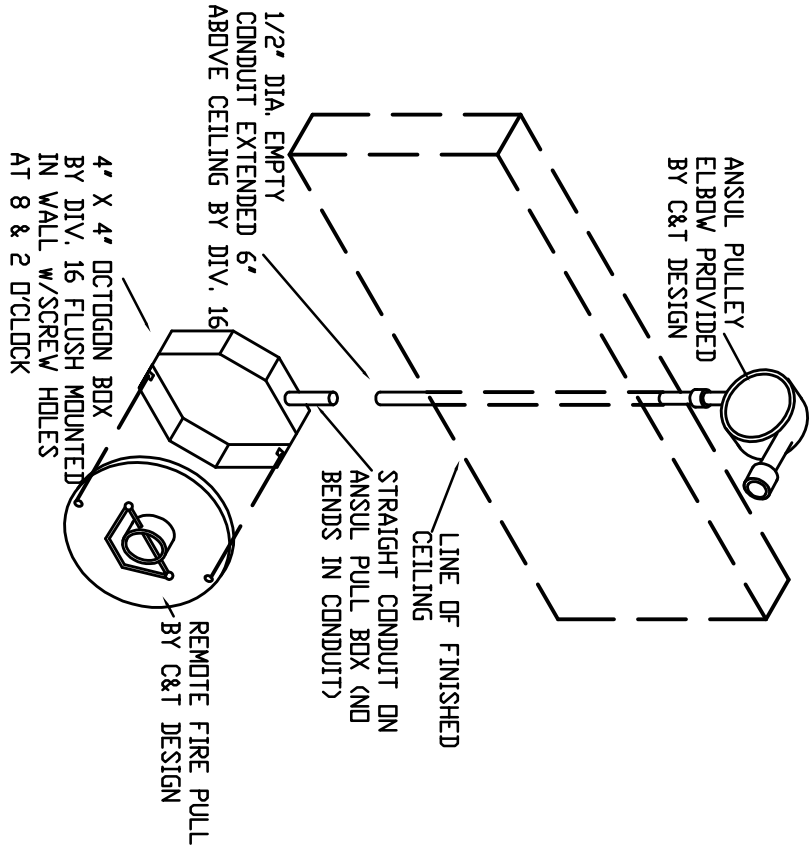
Description

MEZZANINE PLAN
POWER



E-2.2

4 REMOTE FIRE PULL STATION



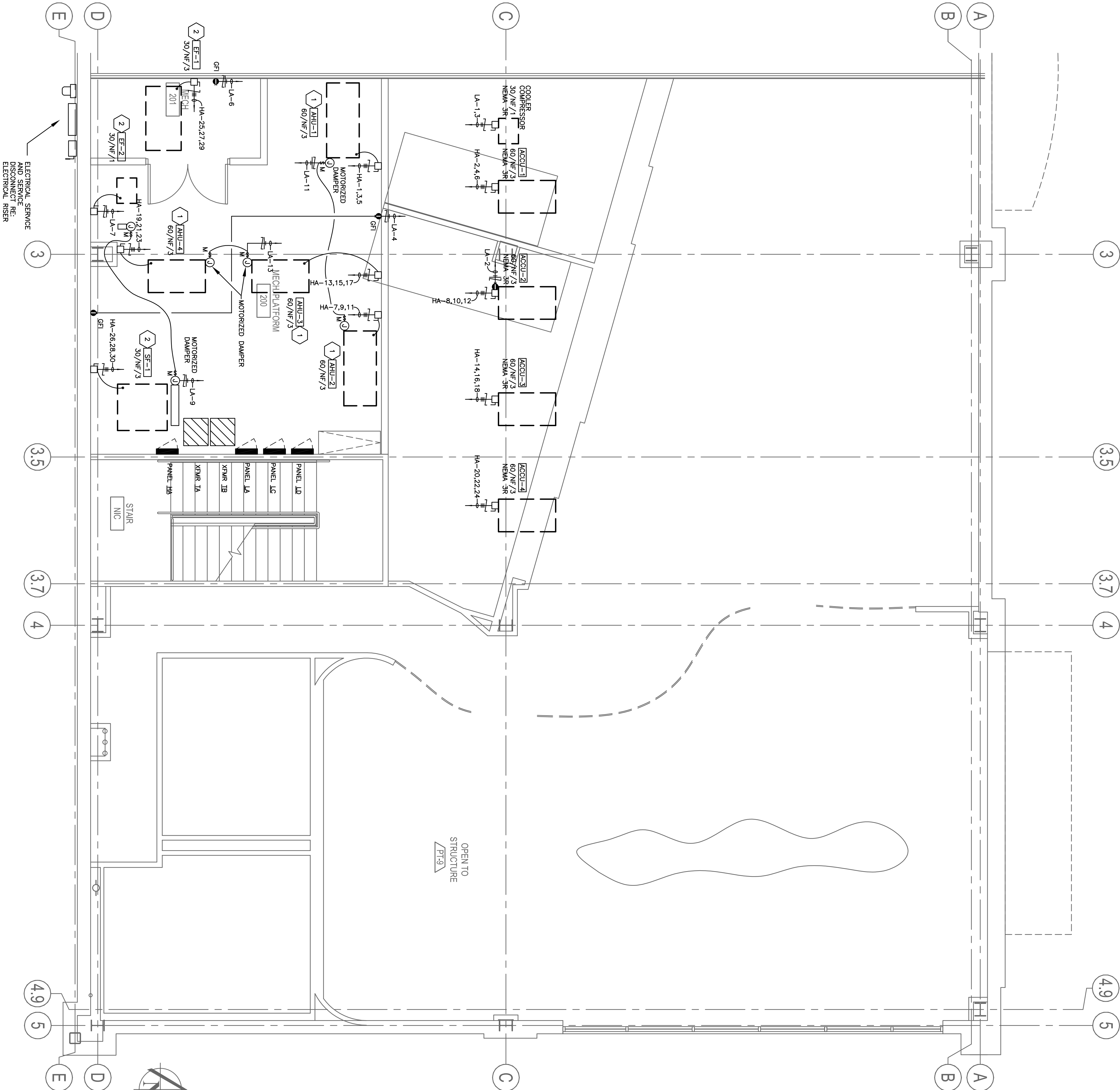
1. Electrical contractor (E.C.) shall obtain and pay for all permits, certificates, etc., as required.
2. E.C. shall deliver certificate of final inspection to Developer/Owner before applying for final payment.
3. Consult with other contractors furnishing equipment to verify loads and weight of equipment and provide adequate support.
4. Finish and install finished pull station, and associated wiring as required for actual form and air conditioning equipment.
5. Make power wiring and final connections to all new HVAC equipment. (Excluding thermostat and thermostat wiring) and smoke detector by E.C. wire shall be copper Type THWN or THHN.
6. Do not make changes or substitutions without approval of Architect and/or engineer.
7. All work shall be guaranteed for a period of (1) one year from date of final acceptance.
8. All electrical systems shall be completely and effectively grounded as required in Article 250 of the National Electrical Code.
9. When called for, service entrance shall be installed per the National Electrical Code and the local utility.
10. Verify mechanical equipment locations prior to the routing of conduit and before setting construction and general contractor before installing light fixtures.
11. Low voltage cable to run loose in, joint space secured neatly to structure use to roof joists.
12. All 120 volt circuits over 75 feet in length shall be #10 awg.
13. Floor box/receptacles to be GFI rated and Nema 3R rated.
14. E.C. shall provide temporary lighting and power during the demolition and construction phases.
15. See architectural plan(s) for additional notes.
16. All electrical work shall be in accordance with the latest edition of the National Electrical Code and all codes having local jurisdiction.
17. Verify mechanical equipment over current protection requirements with the equipment manufacturer prior to connection.
18. E.C. shall verify all light fixture location dimensions with Architectural fixtures plans.
19. See panel schedules for circuit breaker, wire, and conduit requirements.
20. No Aluminum wiring/cable allowed in construction.
21. All wiring and conduit shall be secured by a non-antichamber breaker.
22. All wiring and conduit shall be secured by a non-antichamber breaker.
23. All wiring and conduit shall be secured by a non-antichamber breaker.
24. All wiring and conduit shall be secured by a non-antichamber breaker.
25. All wiring and conduit shall be secured by a non-antichamber breaker.
26. All wiring and conduit shall be secured by a non-antichamber breaker.
27. All wiring and conduit shall be secured by a non-antichamber breaker.
28. All wiring and conduit shall be secured by a non-antichamber breaker.

3 SPECIFICATIONS

1. PROVIDE NEW DISCONNECT FOR AIR HANDLER UNIT. VERIFY ELECTRICAL CONNECTION AND E.A. NEMA 3R ENCLOSURE.
2. KITCHEN FANS PROVIDED & INSTALLED BY KITCHEN REMOD. VERIFY EXACT LOCATION AND ELECTRICAL REQUIREMENTS.

2 KEYED NOTES

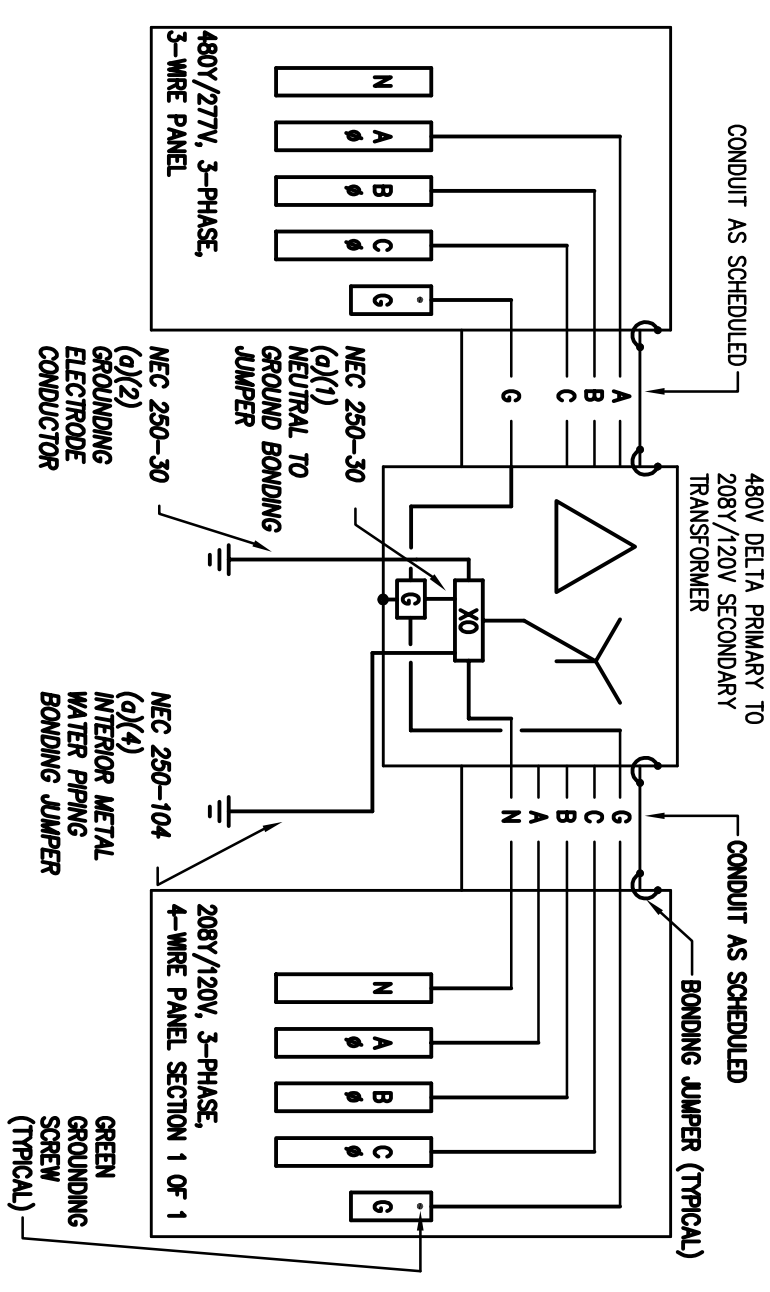
1 MEZZANINE PLAN - POWER



SCALE: 1/4" = 1'-0"

4601 Washington Ave
Houston, TX 77007

Generel



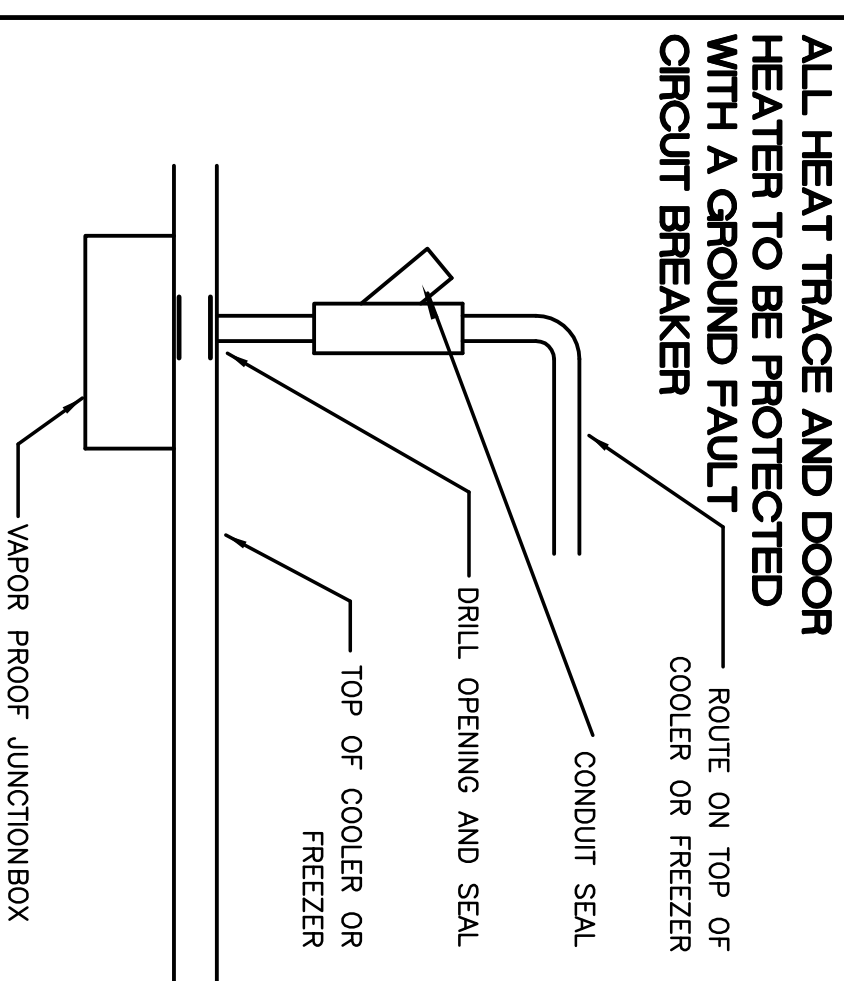
4 TRANSFORMER CONNECTION DETAILS

EQUIPMENT SCHEDULE													
ITEM NO	QTY	EQUIPMENT CATEGORY	AMPS	KW	HP	VOLTS	PHASE	NEMA	DIRECT PLUG	ELECTRICAL AFF (IN)	ELECTRICAL ACH (IN)	ELECTRICAL ROUGH-IN	BRANCH CIRCUIT
E105	1	ICE MAKER W/O BIN	12.5			208-230	1	60	X				LC-13
E117	1	WALK IN COOLER-DECONDENSER			1.5	208-230	1	60	5-15P				LC-5-7
E119	1	WALK IN COOLER-DEW-APARTER			115	1	60						LC-9, LC-11
E126	1	FREEZER, REACH-IN	7.6		0.33	115	1	60	5-15P	X	77		LC-13
E122	1	BAG-N-BOX	5.5		0.33	120	1	60	5-15P	X	12		LC-4
E122	1	SLICER	115			115	1	60	5-15P	X			LC-6
E132	1	MIXER, FLOOR	8.0		0.5	115	1	60	5-15P	X	4		LC-8
E133	1	OVEN, CONNECTION, GAS	7.9		0.5	120	1	60	5-15P	X	59.25		LC-10
E136	1	CLASS ONE HOOD SYSTEM											RE PLAN
E138	1	CHEESEMELTER, ELECTRIC	17.3	3.6		208	1	60	5-15P	X	8		LC-14,16
E139	1	REFRIGERATOR, SHORTY	5.7		0.2	115	1	60	5-15P	X	12		LC-17
E143	1	REFRIGERATOR, SHORTY	5.7		0.2	115	1	60	5-15P	X	12		LC-2
E145	1	REFRIGERATOR, SANDWICH/SALAD PREP	6.2		0.2	115	1	60	5-15P	X	12		LC-21
E146	1	TABLE, HOT FOOD	23.95	5.75		208	1	60	6-20P	X	12		LC-25,27
E150	1	REFRIGERATOR, SANDWICH/SALAD PREP	7.1		0.2	115	1	60	5-15P	X	12		LC-18
E152	2	WARMER, OVERHEAD				115	1	60	5-15P	X			LC-20, LC-22
E157	1	OVEN, MICROWAVE	13.2		1.5	120	1	60	5-15P	X			LC-24
E167	1	WARMER, HOOD TYPE, LOW TEMP	16.0			120	1	60		X	12.8		LC-26
E168	1	CLASS TWO CONDENSATE HOOD SYSTEM											RE PLAN
E176	1	ICED TEA BREWER	16.0	1.9		120	1	60	5-15P	X	8		LC-28
E177	1	CHEF WARMER	13.6	1.7		120	1	60	5-15P	X	7		LC-30
E179	1	COFFEE MAKER	14.2	1.7		120	1	60	5-15P	X	12.8		LC-29
E202	1	COOLER, BOTTLE	8.0		0.33	115	1	60	5-15P	X	12		LC-31
E204	1	DISPENSER, FROZEN BEVERAGE	10.5	2.5	1.5	208	1	60	6-20P	X	12		LC-33,35
E205	1	FROSTER/CHILLER, GLASS/MUG/PLATE	7.3		0.33	115	1	60	5-15P	X	12		LC-32
E208	1	BACK BAR COOLER			0.2	115	1	60	5-15P	X	6.5		LC-34
E215	1	UNDERBAR BLENDER STATION	15.0			120	1	60		X	20		LC-36
E217	1	DISPENSER, BEER	9.3		0.33	115	1	60	5-15P	X	12		LC-38
E218	1	BACK BAR COOLER	0.2		115	1	60	5-15P	X	6.5			LC-37
E219	1	UNDERBAR BLENDER STATION	15.0			120	1	60		X	20		LC-37
E222	1	FROSTER/CHILLER, GLASS/MUG/PLATE	7.3		0.33	115	1	60	5-15P	X	12		LC-2
E223	1	UNDERBAR BLENDER STATION	15.0			120	1	60		X	20		LC-3
E228	1	DISPENSER, FROZEN BEVERAGE	10.5	2.5	1.5	208	1	60	6-20P	X	3		LC-4,6
E231	1	COOLER, BOTTLE	8.0		0.33	115	1	60	5-15P	X	12		LC-5
E230	4	POS	2.6		115	1	60	5-15P	X	12			LC-35, LA-36
E231	4	POS PRINTER	1.3		115	1	60	5-15P	X	12			LA-35, LA-37, LA-39, LA-41

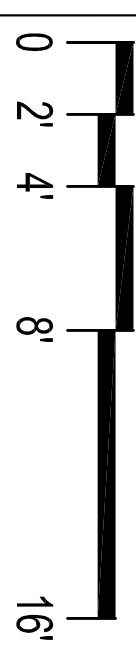
3 KITCHEN ELECTRICAL SCHEDULE

[illegible]

2 ELECTRICAL DEVICES



WALK-IN COOLER CONDUIT



Scale

ELECTRICAL DETAILS


4

PROJECT 1J0082
H.M. McLEOD, P.E.
4727 MERRIN ST. SUITE B
HOUSTON, TEXAS 77057
OFFICE: (713) 961-2880
FAX: (713) 961-0691

H.M. McLeod, P.E.
H.M. McLeod, P.E.
© 2010 H.M. McLeod, P.E.

Drawings and specifications are the property of H.M. McLeod, P.E. and are not to be reproduced, stored in a retrieval system, or transmitted in any form or by any means, electronic, mechanical, photocopying, recording, or by any information storage and retrieval system, without prior written consent of H.M. McLeod, P.E.

THIS SEAL WAS AUTHORIZED
ON 04/29/10
THIS DATE: 06/19/10
Project Name



TQLA

Project Number

CAD File Name:

Description

Scale

4601 Washington Ave
Houston, TX 77007

711 Louisiana
Suite 300
Houston, Texas 77002
Tel: 713.844.0000
Fax: 713.844.0001

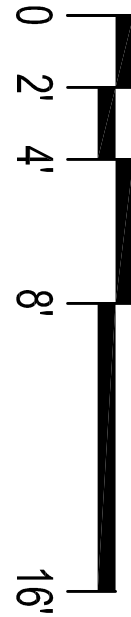
LOAD ANALYSIS SERVICE

		480 VOLT P-P-P 277 VOLT P-N 3 PHASE 4 WIRE			
--	--	---	--	--	--

DESCRIPTION	LOAD					REMARKS ON NEC CALCULATION
	CON.	NEC	PHASE A	PHASE B	PHASE C	
	(KVA)	(KVA)	(AMPS)	(AMPS)	(AMPS)	
ELECTRIC HEAT	127.2	127.2	153.0	153.0	153.0	100% OF CONNECTED
A/C REFRIGERATION	69.0	0.0	0.0	0.0	0.0	LESS THAN HEAT
MISCELLANEOUS MOTORS	7.7	7.7	9.2	9.2	9.2	100% OF CONNECTED
WATER HEATING	0.0	0.0	0.0	0.0	0.0	100% OF CONNECTED
OUTDOOR LIGHTING	2.4	0.0	3.6	3.6	3.6	125% OF CONNECTED
INDOOR LIGHTING	6.9	8.6	10.3	10.3	10.3	125% OF THE LARGER OF CONNECTED OR TABLE 220-3(b)
RECEPTACLES AND SPECIAL EQUIPMENT	10.5	10.2	12.3	12.3	12.3	NEC TABLE 220-13
MISCELLANEOUS CONTINUOUS	0.0	0.0	2.0	2.0	2.0	100% OF CONNECTED
MISCELLANEOUS NON-CONTINUOUS	0.0	0.0	3.0	3.0	3.0	125% OF CONNECTED
KITCHEN EQUIPMENT	5.5	35.8	43.0	43.0	43.0	100% OF CONNECTED
25% LARGEST MOTOR	5.2	5.2	6.2	6.2	6.2	65% OF CONNECTED
*** TOTALS ***	285.8	200.1	240.7	240.7	225.2	
*** CAPACITY ***		300.0	300.0	300.0	300.0	
*** SPARE CAPACITY ***		59.3	59.3	59.3	74.8	

CONNECTED LOADS									
C PH	B PH	A PH	N	LOAD	TYPE	DESCRIPTION			
(AMP)	(AMP)	(AMP)	(VA)						
0.0	0.0	0.0	0	0	HT	ELECTRIC HEAT			
0.0	0.0	0.0	0	0	AC	A/C REFRIGERATION			
7.0	7.0	27.9	5930	0	WM	MISC. MOTORS			
0.0	0.0	0.0	0	0	WH	WATER HEATING			
0.0	0.0	0.0	0	0	DL	OUTDOOR LIGHTING			
0.0	0.0	0.0	0	0	DL	INDOOR LIGHTING			
32.5	30.7	24.0	10470	0	RP	RECEP/CATS			
0.0	0.0	0.0	0	0	EX	EXISTING DEMAND			
6.0	6.0	4.5	6.0	1890	MC	MISC. CONTINUOUS			
0.0	0.0	0.0	0	0	MC	MISC. CONTINUOUS			
18.0	18.0	18.0	6480	0	KN	KITCHEN EQUIPMENT			
32.1	32.1	32.1	0.0	11569	SF	SUB-FEED			
7.0	7.0	14.9	35529	1790	*** TOTAL ***	LARGEST MOTOR			
MISC COMPUTED LOADS									
NEC	DESCRIPTION	TYPE	LOAD	A PH	B PH	C PH			
FCIR			(VA)	(AMP)	(AMP)	(AMP)			
0.00	ELECTRIC HEAT	0	0	0.0	0.0	0.0			
0.00	A/C REFRIGERATION	HT	0	0.0	0.0	0.0			
0.00	MISC. MOTORS	AC	0	0.0	0.0	0.0			
1.00	MISC. MOTORS	WM	5930	27.9	7.0	7.0			
1.00	WATER HEATING	WH	0	0.0	0.0	0.0			
1.25	OUTDOOR LIGHTING	DL	0	0.0	0.0	0.0			
1.00	INDOOR LIGHTING	DL	0	0.0	0.0	0.0			
220.13	RECEP/CATS	RP	10235	31.8	23.5	30.1			
1.25	EXISTING DEMAND	EX	0	0.0	0.0	0.0			
1.25	MISC. CONTINUOUS	MC	2475	7.5	5.6	7.5			
1.00	MISC. NON-CONTINUOUS	MC	0	0.0	0.0	0.0			
0.65	KITCHEN EQUIPMENT	KN	4212	11.7	11.7	11.7			
1.00	SUB-FEED	SF	11569	0.0	32.1	32.1			
0.25	FEED-THRU	0	448	0.0	3.7	1.7			
*** TOTAL ***			33659	72.4	104.5	90.1			

HA															
REMARKS										LIGHTING PANELBOARD					
1. BOLT-1 CIRCUIT BREAKERS 2. LABEL PANEL NAME "HA" AT TOP EXTERIOR OF PANEL 3. HVAC EQUIPMENT TO BE PROTECTED W/ HACR TYPE CIRCUIT BREAKERS 4. LABEL ALL BRANCH CIRCUITS W/ TYPE WRITTEN INDEX 5. VERTICAL CIRCUIT MAPS FOR ALL HVAC EQUIPMENT & GAS REQUIRED										300 AMP MCB 480 VOLT P-P-N 277 VOLT P-P-N 3 PHASE 4 WIRE 220/208 AC, SYMMETRICAL					
C	P	B	A	N	N	TYPE	WIRE	NO	NO	WIRE	TYPE	N	A	P	C
(AMP)	(AMP)	PH	PH	(AMP)	(AMP)	DESCRIPTION	OR REQUIRED AMP /P	NEC BREQ	NEC BREQ	DESCRIPTION	(VA)	(AMP)	PH	PH	(AMP)
42.0	42.0	0.0	0.0	0.0	0.0	AHU-1	#6 45 /3	1	2	30 /3	#10	ACU-1	AC	0.0	24.0
0.0	0.0	0.0	0.0	0.0	0.0	HT	---	3	4	---	AC	AC	0.0	0.0	24.0
0.0	0.0	0.0	0.0	0.0	0.0	HT	---	5	6	---	AC	AC	0.0	0.0	24.0
0.0	0.0	0.0	0.0	0.0	0.0	AHU-2	#4 60 /3	7	8	40 /3	#8	ACU-2	AC	207/84	0.0

[illegible][illegible]

4601 Washington Ave
Houston, TX 77007

711 Louisiana
Suite 300
Houston, Texas 77002
Tel: 713.844.0000
Fax: 713.844.0001

NEC COMPUTED LOADS									
NEC		0							
DESCRIPTION	TYPE	LOAD	N	A PH	B PH	C PH	D PH	E PH	F PH
		(VA)	(AMP)	(AMP)	(AMP)	(AMP)	(AMP)	(AMP)	(AMP)
0.00 ELECTRIC HEAT	0								
1.00 A/C REFRIGERATION	HT	0	0.0	0.0	0.0	0.0	0.0	0.0	0.0
1.00 A/C MOTORS	AM	0	0.0	0.0	0.0	0.0	0.0	0.0	0.0
1.00 WATER HEATING	WH	0	0.0	0.0	0.0	0.0	0.0	0.0	0.0
1.25 OUTDOOR LIGHTING	OL	0	0.0	0.0	0.0	0.0	0.0	0.0	0.0
1.25 OUTDOOR HEATING	EH	0	0.0	0.0	0.0	0.0	0.0	0.0	0.0
220.0 EXCESSIVE DEMAND	ED	0	0.0	0.0	0.0	0.0	0.0	0.0	0.0
1.25 EXCESSIVE DEMAND	EX	0	0.0	0.0	0.0	0.0	0.0	0.0	0.0
1.25 MISC. CONTROLS	MC	0	0.0	0.0	0.0	0.0	0.0	0.0	0.0
1.00 MISC. NON-CONTINUOUS	MM	0	0.0	0.0	0.0	0.0	0.0	0.0	0.0
0.68 KITCHEN EQUIPMENT	KT	26618	52.5	93.2	74.9	66.7			
1.00 SUB-FEED	SF	0	0.0	0.0	0.0	0.0	0.0	0.0	0.0
FEED-THRU		0	0.0	0.0	0.0	0.0	0.0	0.0	0.0
0.25 LARGEST MOTOR	0								
*** TOTAL ***		26618	52.5	93.2	74.9	66.7			

NEC COMPUTED LOADS									
0									
NEC	DESCRIPTION	TYPE	LOAD (VA)	N (AMP)	P (AMP)	PH (AMP)	C (AMP)	PH (AMP)	C (AMP)
0.00	ELECTRIC HEAT	0							
1.00	A/C REFRIGERATION	HT	0	0.0	0.0	0.0	0.0	0.0	0.0
1.00	MISC. MOTORS	AM	0	0.0	0.0	0.0	0.0	0.0	0.0
1.00	WATER HEATING	WH	0	0.0	0.0	0.0	0.0	0.0	0.0
1.25	INDOOR LIGHTING	LI	0	0.0	0.0	0.0	0.0	0.0	0.0
220	220V AC SCHEM. DEMAND	EX	0	0.0	0.0	0.0	0.0	0.0	0.0
1.25	MISC. CONTROLS	MC	0	0.0	0.0	0.0	0.0	0.0	0.0
1.00	MISC. NON-CONTINUOUS	NM	0	0.0	0.0	0.0	0.0	0.0	0.0
0.66	KITCHEN EQUIPMENT	KT	4953	14.5	14.5	16.6	12.0	0.0	0.0
1.00	SUB-FEED	SF	0	0.0	0.0	0.0	0.0	0.0	0.0
	FEED-TIRU	F	0	0.0	0.0	0.0	0.0	0.0	0.0
0.25	LARGEST MOTOR	0	0	0.0	0.0	0.0	0.0	0.0	0.0
***	TOTAL ***		4953	14.5	14.5	16.6	12.0		

ന

