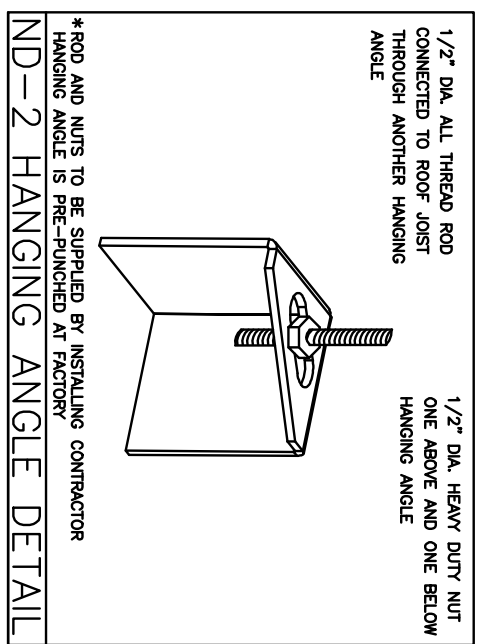


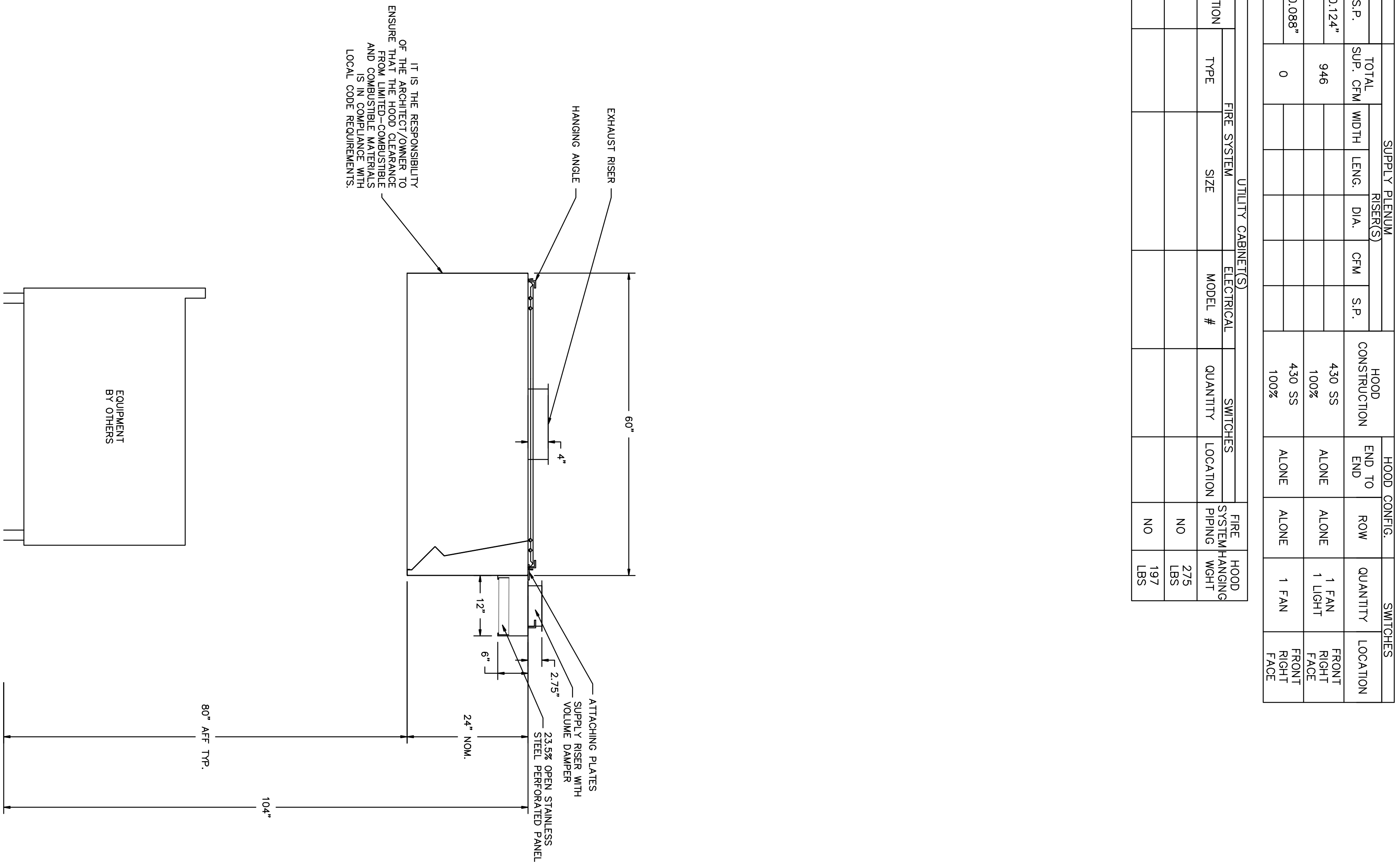
HOOD NO.	TAG	MODEL	LENGTH	MAX. COOKING TEMP.	EXHAUST RISE/PLUM			SUPPLY PLENUM			HOOD CONFIG.		SWITCHES				
					EXH. CFM	TOTAL EXH. CFM	RISE/PLUM DIA.	CFM	S.P.	RISE/PLUM DIA.	CFM	S.P.	HOOD CONSTRUCTION	END TO END	ROW	QUANTITY	LOCATION
1	SANDWICH/PIZZA	6024	5' 11.00"	700 Deg	1183	1183	14"	14"	1183	-0.124"	946	100%	430 SS	ALONE	ALONE	1 FAN	FRONT RIGHT FACE
2	OVEN	6024	4' 1.00"	700 Deg	715	715	11"	11"	715	-0.088"	0	100%	430 SS	ALONE	ALONE	1 FAN	FRONT RIGHT FACE

HOOD NO.	POS.	LENGTH	WIDTH	HEIGHT	WIDTH	LENG.	DIA.	CFM	S.P.	EXHAUST RISE/PLUM		SUPPLY PLENUM		HOOD CONFIG.		SWITCHES		
										EXH. CFM	TOTAL EXH. CFM	RISE/PLUM DIA.	CFM	S.P.	HOOD CONSTRUCTION	END TO END	ROW	QUANTITY
1	Front	71"	12"	6"	10"	24"		944	0.138"									
2																		

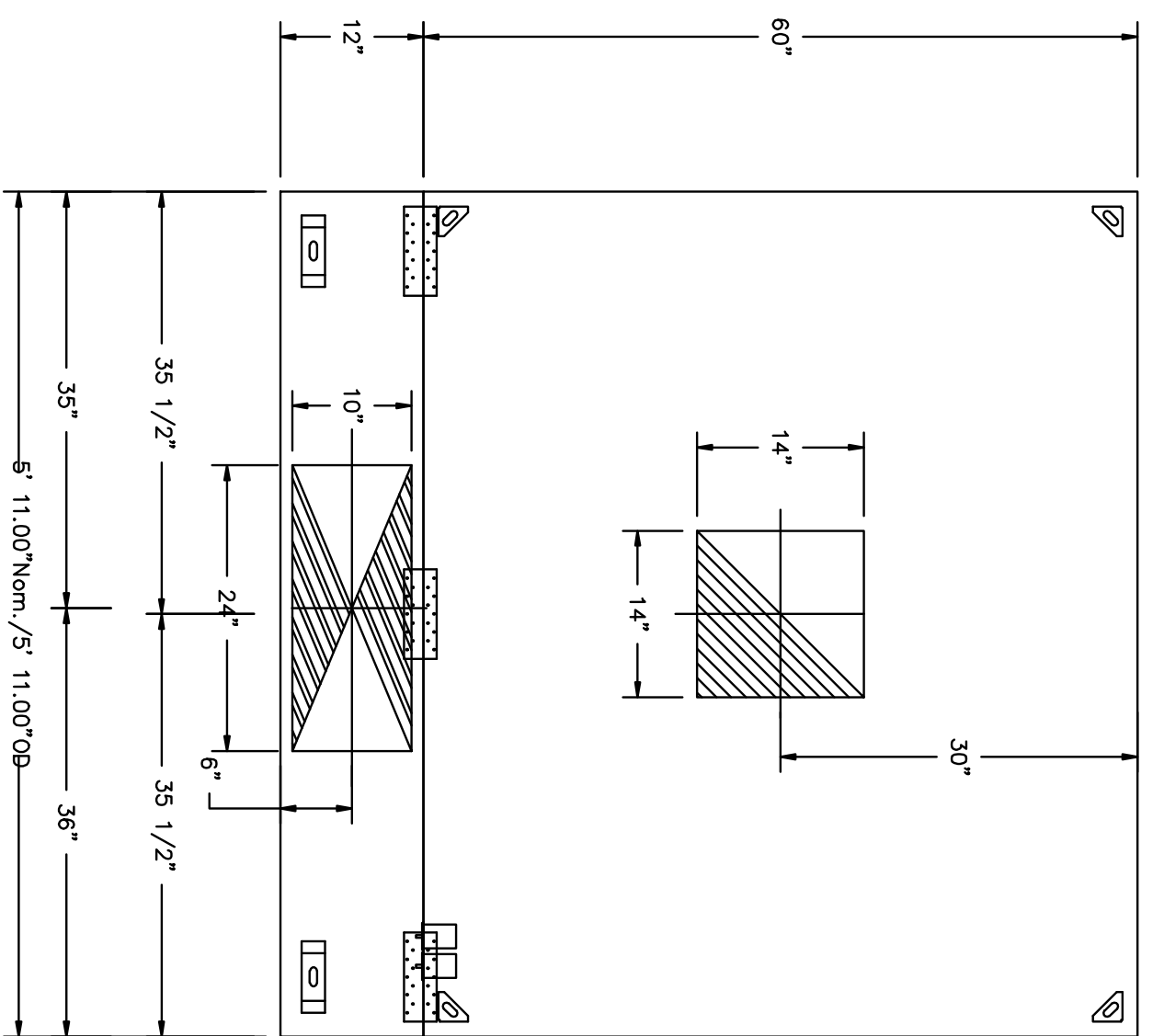


CAPTIVE-AIRE HOODS ARE BUILT IN COMPLIANCE WITH NFPA #96 NSF UL 710 & ULCT10 STANDARDS E.T.L. LISTED 3054804-001

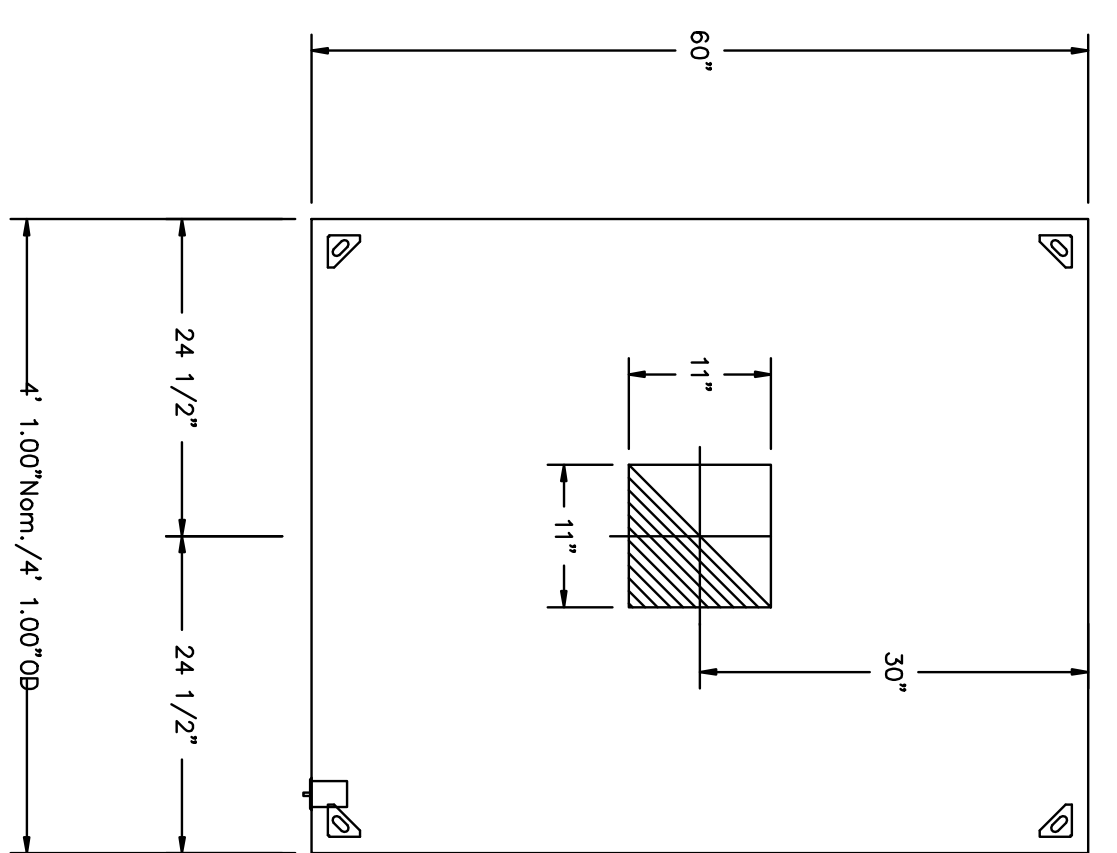
**ETL LISTING DESCRIPTION BLOCK**  
**THE CAPTIVE AIRE MODEL VH HAS BEEN E.T.L. TESTED, LISTED, AND APPROVED TO EXHAUST A MINIMUM OF 100 CFM PER LINEAR FOOT OVER 700 DEGREE EQUIPMENT**



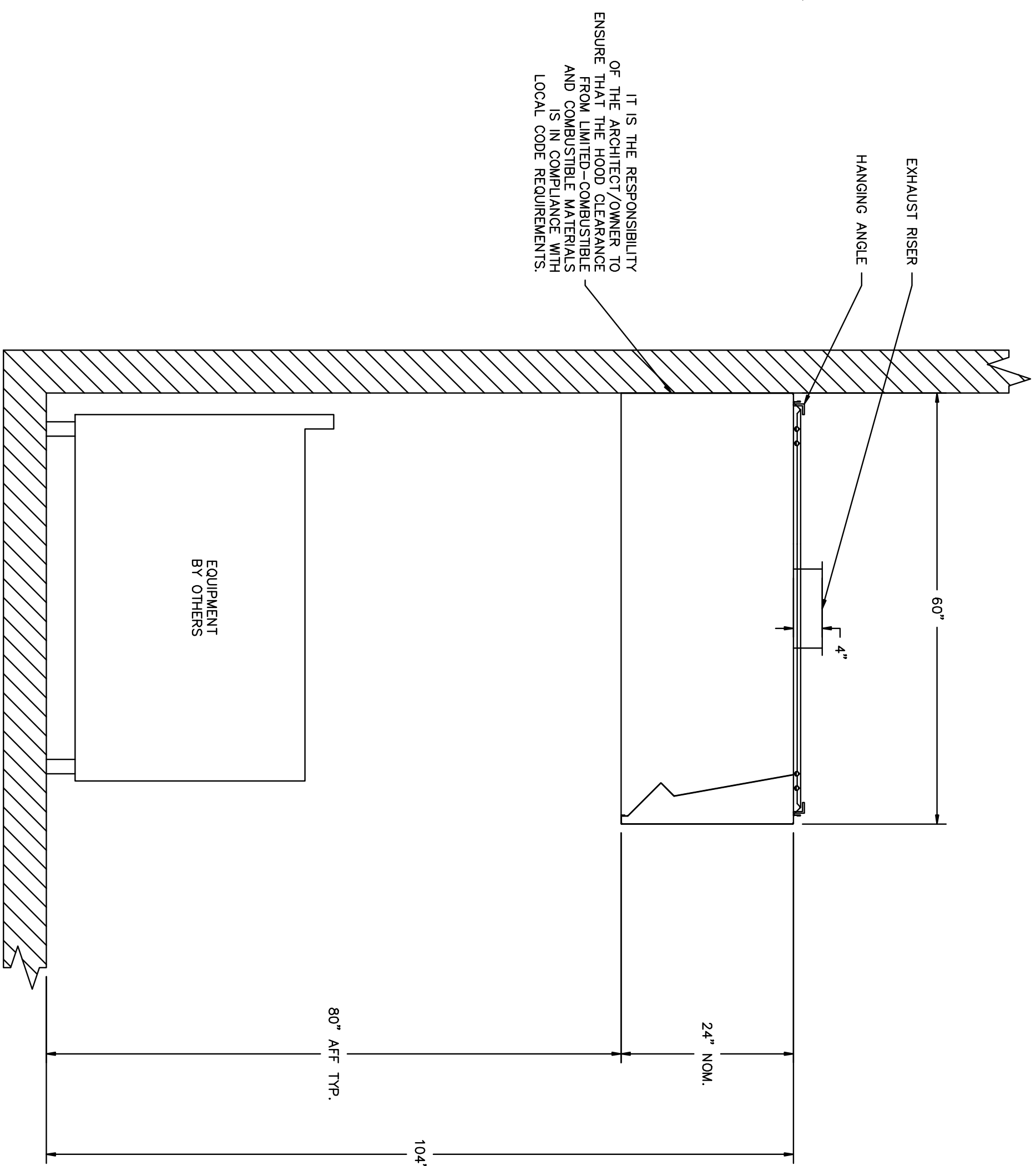
SECTION VIEW - MODEL 6024VHB-PSP-F-ND HOOD - #1 (SANDWICH/PIZZA)



PLAN VIEW - Hood #1 (SANDWICH/PIZZA) 5' 11.00" LONG 6024VHB-PSP-F-ND



PLAN VIEW - Hood #2 (OVEN) 4' 1.00" LONG 6024VHB-ND



SECTION VIEW - MODEL 6024VHB-ND HOOD - #2 (OVEN)

Rev.	By	Date

**TRIMCOS DESIGN & ENG.**  
 11222 RICHMOND AVE.  
 SUITE# 225 HOUSTON TX, 77082  
 (281) 558-9696  
 F-3926

SCHLOTZSKY'S VICTORY LAKES TOWN CENTER  
 TRACK 7A, NEC INTERSTATE HWY 45 & F.M.646  
 LEAGUE CITY TEXAS 77000

**ARCH**  
 Woo Associates, LLC  
 ARCHITECTS - PLANNERS  
 13734 Brantford Green Dr.  
 Houston, TX. 77083  
 (832) 228-8128

Date	07-14-2010
Scale	AS SHOWN
Drawn by	
Job#:	
SHEET NO:	M-03