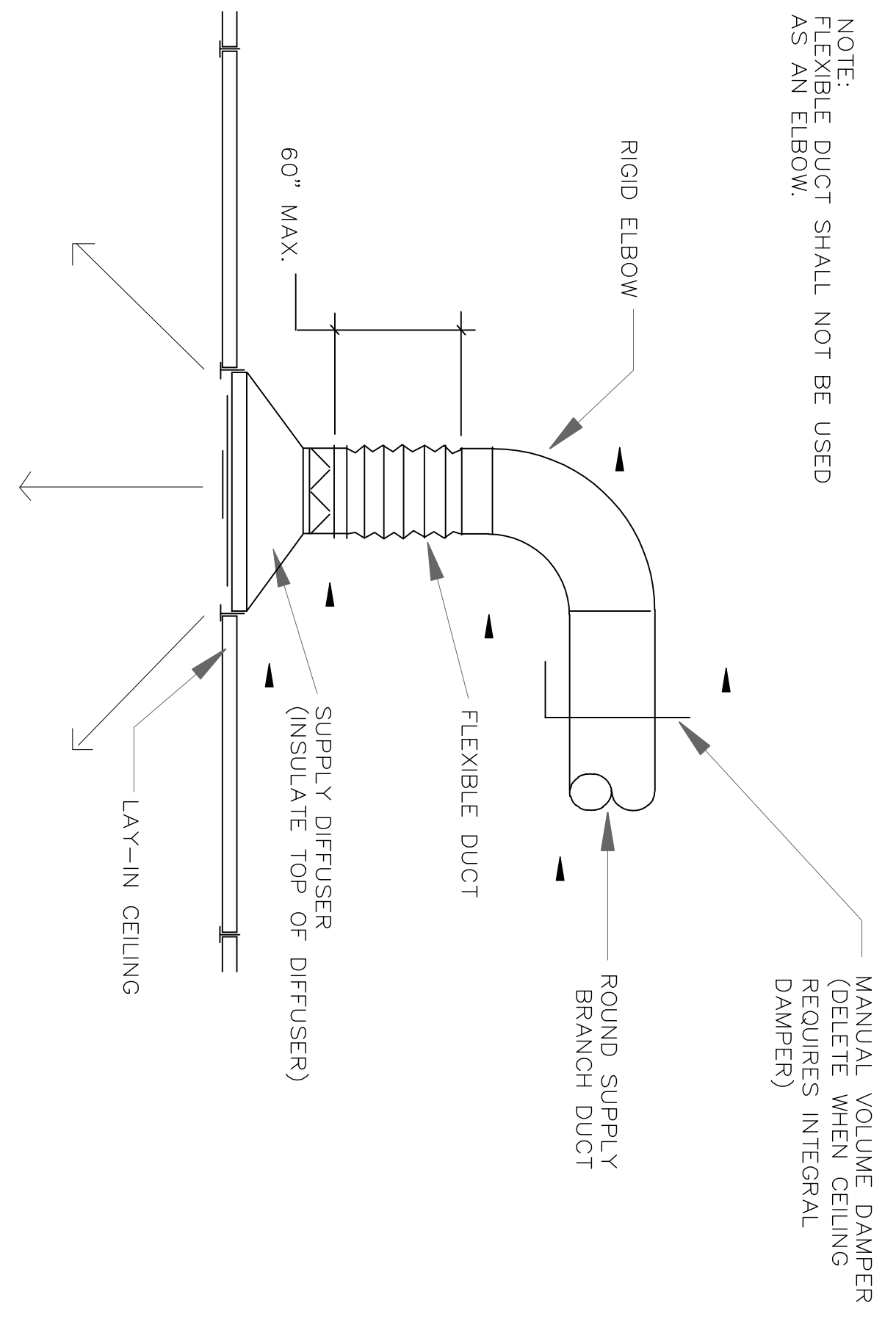


NOTE:  
FLEXIBLE DUCT SHALL NOT BE USED  
AS AN ELBOW.

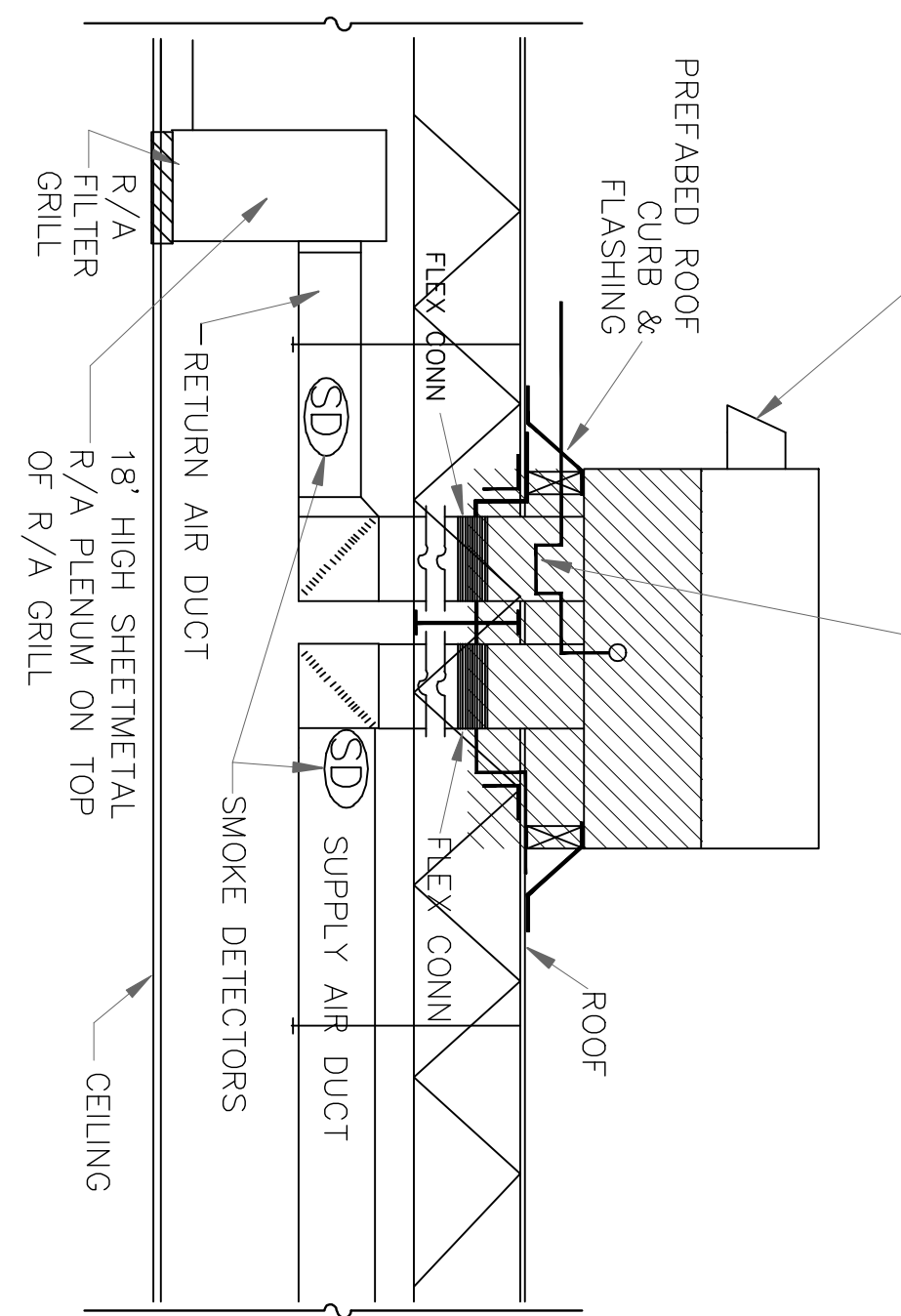


**DIFFUSER CLOSED CEILING**

NOT TO SCALE

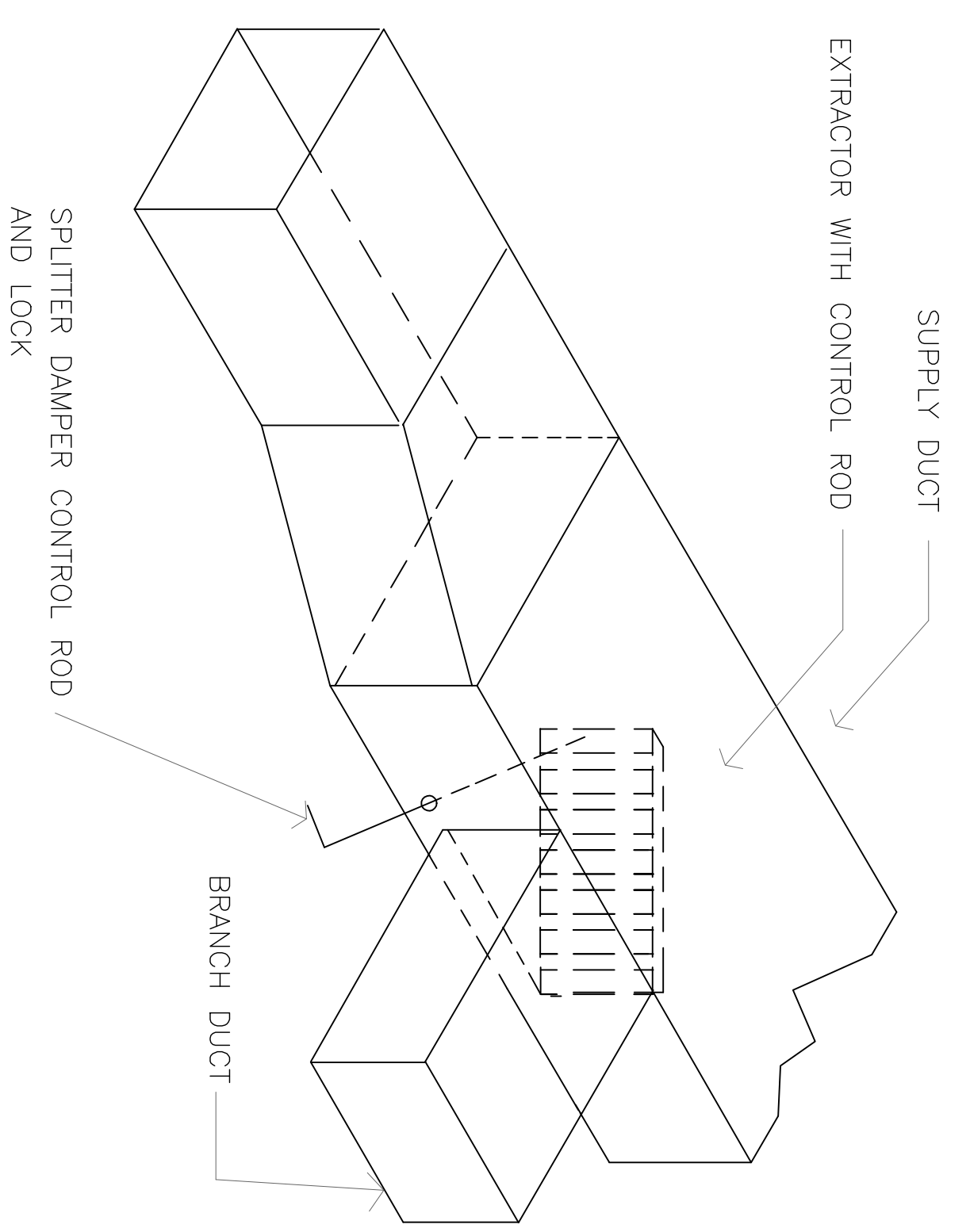
PER MANUFACTURER  
OUTSIDE AIR INTAKE IS  
CFM/OCCUPANT

FULL SIZE INSULATED COND.  
DRAIN ROUTE TO NEAREST ROOF



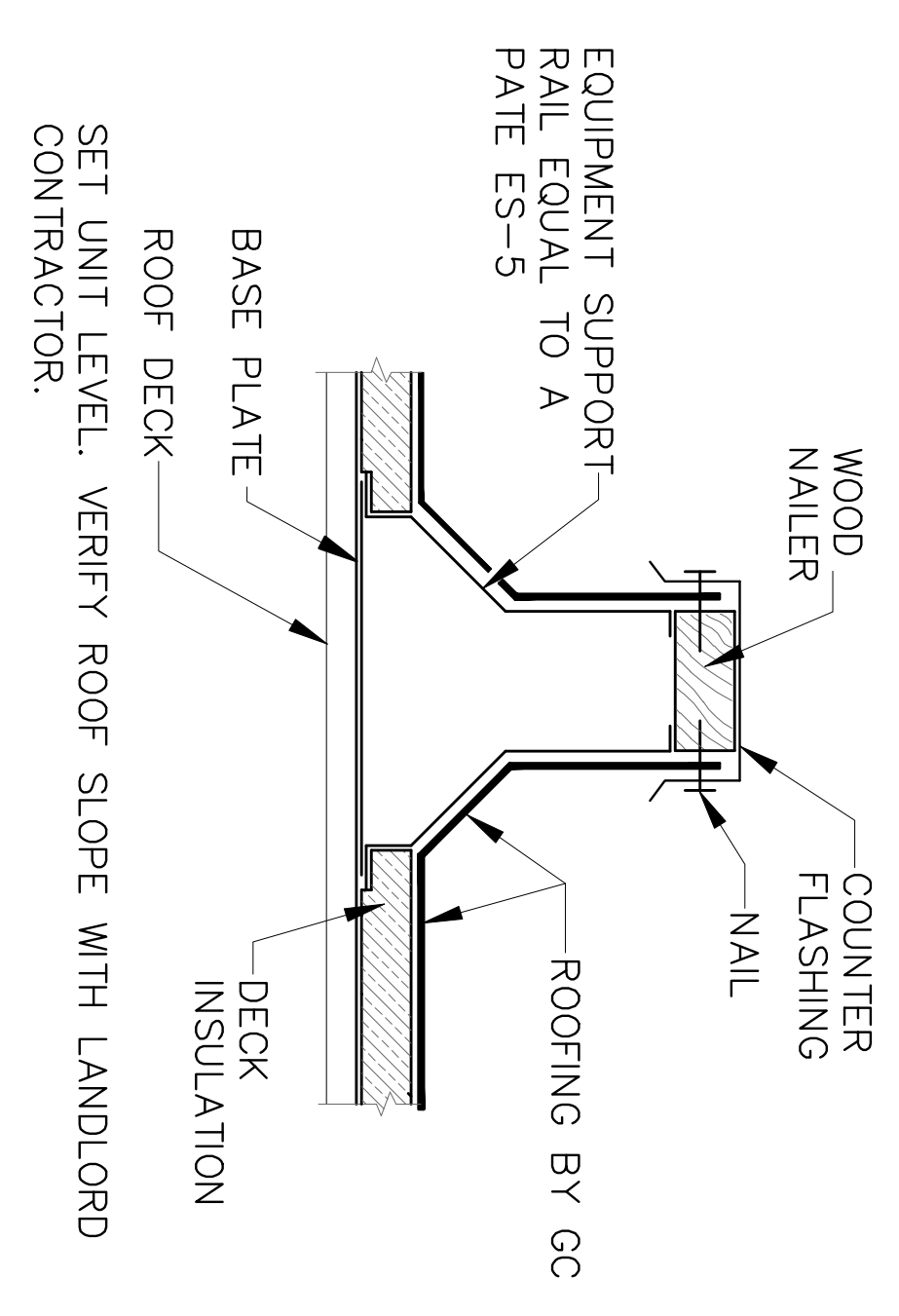
**ROOF TOP SCHEMATIC DETAIL**

NOT TO SCALE



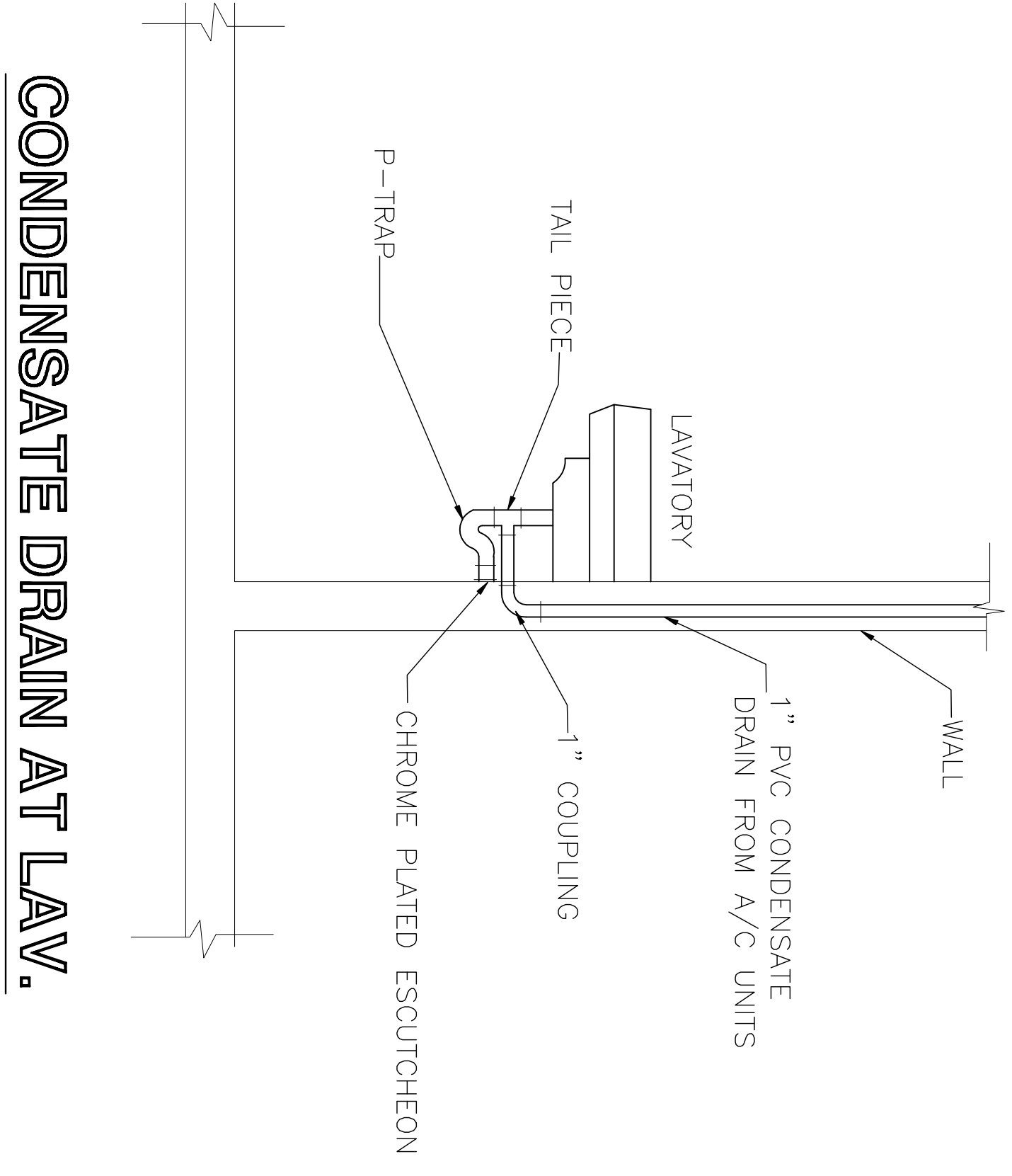
**HVAC DUCT DETAIL**

NOT TO SCALE



**EQUIPMENT CURB**

NOT TO SCALE



**CONDENSATE DRAIN AT LAV.**

NOT TO SCALE

NOTE:

CONSTRUCTION DOCUMENTS SHALL REQUIRE THAT WITHIN 90 DAYS AFTER THE DATE OF SYSTEM ACCEPTANCE RECORD DRAWINGS OF THE ACTUAL INSTALLATION BE PROVIDED TO THE BUILDING OWNER OR THE DESIGNATED REPRESENTATIVE OF THE BUILDING OWNER. RECORD DRAWINGS SHALL INCLUDE AS A MINIMUM THE LOCATION AND PERFORMANCE DATA ON EACH PIECE OF EQUIPMENT, GENERAL CONFIGURATION OF DUCT AND PIPE DISTRIBUTION SYSTEM INCLUDING SIZES, AND THE TERMINAL AIR OR WATER DESIGN FLOW RATES. MANUALS, CONSTRUCTION DOCUMENTS SHALL REQUIRE THAT AN OPERATING MANUAL AND A MAINTENANCE MANUAL BE PROVIDED TO THE BUILDING OWNER OR THE DESIGNATED REPRESENTATIVE OF THE BUILDING OWNER WITHIN 90 DAYS AFTER THE DATE OF SYSTEM ACCEPTANCE. THESE MANUALS SHALL BE IN ACCORDANCE WITH INDUSTRY-ACCEPTED STANDARDS (SEE APPENDIX B) AND SHALL INCLUDE, AT A MINIMUM, THE FOLLOWING: (A) SUBMITTAL DATA STATING EQUIPMENT SIZE AND SELECTED OPTIONS FOR EACH PIECE OF EQUIPMENT REQUIRING MAINTENANCE. (B) OPERATION MANUALS AND MAINTENANCE MANUALS FOR EACH PIECE OF EQUIPMENT REQUIRING MAINTENANCE, EXCEPT EQUIPMENT NOT FURNISHED AS PART OF THE PROJECT. REQUIRED ROUTINE MAINTENANCE ACTIONS SHALL BE CLEARLY IDENTIFIED. (C) NAMES AND ADDRESSES OF AT LEAST ONE SERVICE AGENCY. (D) HVAC CONTROLS SYSTEM MAINTENANCE AND CALIBRATION INFORMATION, INCLUDING WIRING DIAGRAMS, SCHEMATICS, AND CONTROL SEQUENCE DESCRIPTIONS. DESIRED OR FIELD-DETERMINED SET-POINTS SHALL BE PERMANENTLY RECORDED ON CONTROL DRAWINGS AT CONTROL DEVICES OR, FOR DIGITAL CONTROL SYSTEMS, IN PROGRAMMING COMMENTS. (E) A COMPLETE NARRATIVE OF HOW EACH SYSTEM IS INTENDED TO OPERATE, INCLUDING SUGGESTED SET-POINTS. SECTION 6.7.2 - 2008 HOUSTON COMMERCIAL ENERGY CONSERVATION CODE.

**1 HOOD-1-4' FOR COOKING AREA (TYPE-1)**  
AIR EXHAUST = 4'-0" x 4' x 100 = 1600 CFM  
AIR SUPPLY = 1600 x 80% = 1280 CFM  
AIR VELOCITY = 1300 FPM  
EXH.DUCT SIZE = 20" X 12"

**1 HOOD-2-5' FOR COOKING AREA (TYPE-1)**  
AIR EXHAUST = 5'-0" x 4' x 100 = 2000 CFM  
AIR SUPPLY = 2000 x 80% = 1600 CFM  
AIR VELOCITY = 1600 FPM  
EXH.DUCT SIZE = 20" X 12"

PACKAGE UNIT EQUIPMENT SCHEDULE												
MARK	DESCRIPTION	SIZE	BTUH	FAN	ELECTRIC			O/S AIR	O/S DIA.	SEER		
				CFM	H.P.	K.W.	VOLTAGE					
*RTU-1	80T/M014	8.0 TON	90,000	3,000	1	11.1	240/120V/60HZ	3	2.0 A	500 CFM	10"ø	10
*RTU-2	50T/M012	5.0 TON	50,000	1,400	1/2	20	208/120V/60HZ	3	4.0 A	499 CFM	10"ø	10

\*\*\*ALL RTU UNITS WILL REQUIRE 7 DAY PROGRAMMABLE TEMPERATURE CONTROLS\*\*\*

TOILET EXHAUST FAN SCHEDULE									
MARK	DESCRIPTION	CFM	ELECTRIC			S.P.	SONES		
			WATTS	VOLTAGE	PH.				
(2)EF	GREENHECK-SP-850	75	40	120V, 60HZ	1	0.125	1.9		

- NOTES:
1. BACKFLOW DAMPERS
  2. SPEED CONTROL.
  3. FAN TO RUN CONTINUOUSLY.
  4. WALL CAP MOUNT AT LEAST 10' ABOVE GRADE. PAINT TO MATCH EXTERIOR

Rev.	By	Date

**TRIMCOS DESIGN & ENG.**

11222 RICHMOND AVE.  
SUITE# 225 HOUSTON TX, 77082  
(281) 558-9696  
F-3926

SCHLOTZSKY'S VICTORY LAKES TOWN CENTER  
TRACK 7A, NEC INTERSTATE HWY 45 & F.M.646  
LEAGUE CITY TEXAS 77000

**ARCH**  
Woo Associates, LLC

ARCHITECTS - PLANNERS

13734 Bromford Green Dr.  
Houston, TX 77083  
(832) 228-8128

Date	07-14-2010
Scale	AS SHOWN
Drawn by	
Job#:	
SHEET NO.	

M-02