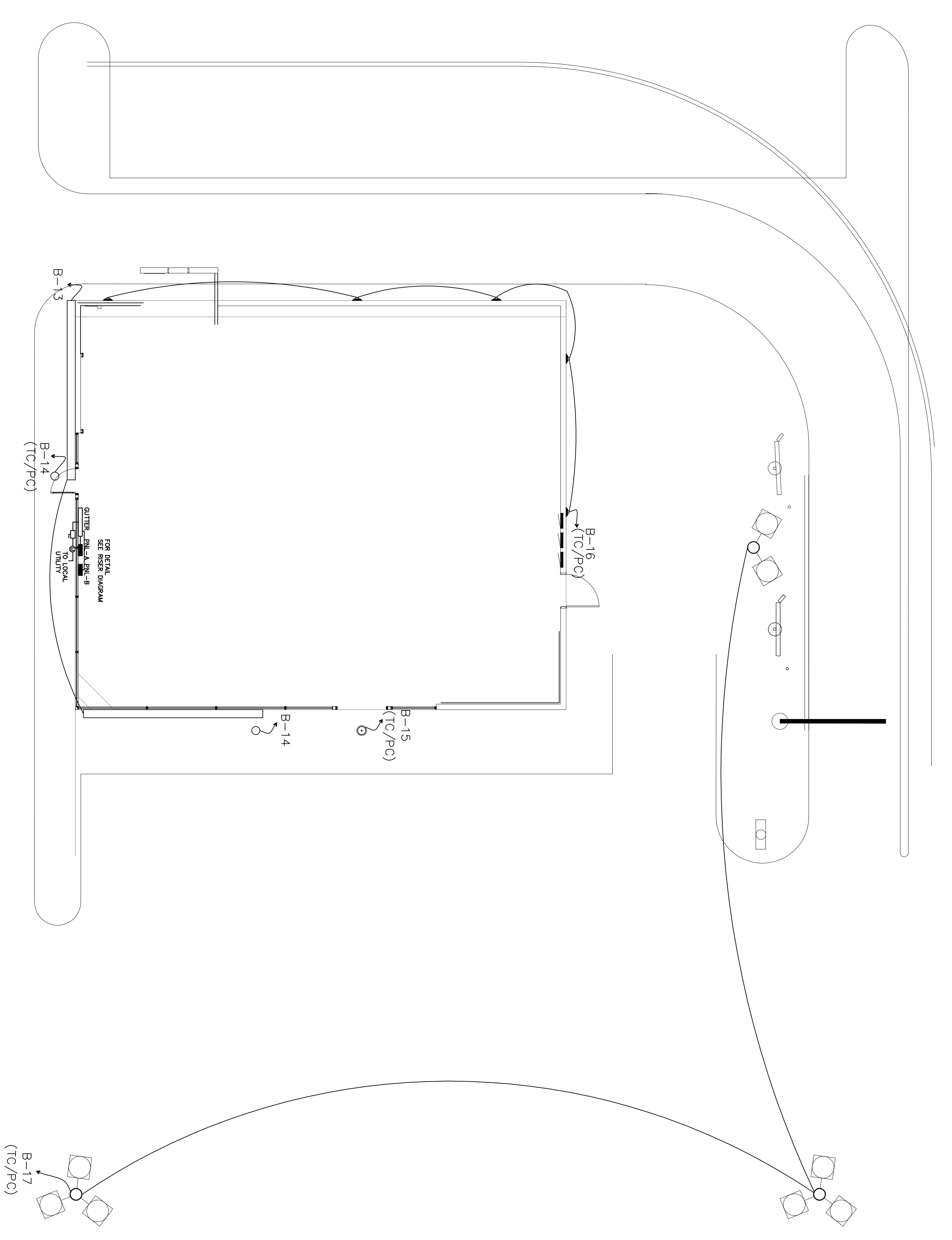


PANEL "A"				Type:	200 AMPS.	MCB-3P	
VOL	208Y/120	Feeder/See Riser	Diagram	Size:	200 AMPS BUS	10 KAIC RATED	
Phas	3	Mount Surface	Location:	KAIC, SERIES RATED			
Wire#	4						
CK	Trips	No of Wire	Watts	Description	Watts	Wire Size	No of Trip/CK
1	20	1	12	780 LIGHTS	420	12	1
3	20	1	12	1,100 TRACK LIGHTS	300	12	1
5	20	1	12	200 CEILING FANS	550	12	1
7	20	1	12	150 LIGHT & EXH. FAN	150	12	1
9	20	1	12	50 LIGHT	600	12	1
11	20	1	12	722 LIGHTS	192	12	1
13	20	1	12	192 LIGHTS	60	12	1
15	20	1	10	600 EXT & EMER LIGHTS	1,800	12	1
17	20	1	12	120 LIGHTS	360	12	1
19	20	1	12	360 RECEP	180	12	1
21	30	2	10	2,500 EXHT. FAN HOOD-1	180	12	1
23	30	2	10	2,500	540	12	1
25	20	1	12	180 RECEP/T/GFI	900	10	1
27	20	1	12	180 RECEP/T/GFI	720	12	1
29	20	1	12	720 RECEPTS	540	12	1
31	20	1	12	180 RECEP/T/GFI	180	12	1
33	20	1	12	540 RECEPTS	900	10	1
35	20			SPARE			
37	20			SPARE			
39	20			SPARE			
41	20			SPARE			
PHASE A TOTAL:				PH	A	B	C
PHASE B TOTAL:					3,732		
PHASE C TOTAL:					9,470		
TOTAL CONNECTED LOAD IN					19,646	360	6,444
					55 AMP	* 1.25	68 AMP

PANEL "B"				Type:	200 AMPS.	MCB-3P	
VOL	208Y/120	Feeder/See Riser	Diagram	Size:	200 AMPS BUS	10 KAIC RATED	
Phas	3	Mount Surface	Location:	KAIC, SERIES RATED			
Wire#	4						
CK	Trips	No of Wire	Watts	Description	Watts	Wire Size	No of Trip/CK
1	40	3	8	3,000	4,800	10	3
3	40	3	8	3,000	4,800	10	3
5	40	3	8	3,000	4,800	10	3
7	20	1	12	180 RECEP/T/GFI	360	12	1
9	30	2	10	2,500 EXH FAN/HOOD-2	2,680	12	1
11	30	2	10	2,500	2,680	12	1
13	30	1	10	1,800 SIGNS	2,692	12	1
15	20	1	12	100 LIGHT	200	12	1
17	30	1	10	1,700 POLE LIGHTS	500	12	1
19	20	1	12				
21	20	1	12				
23	20	1	12				
25	20	1	12				
27	20	1	12				
29	20	1	12				
31	20	1	12				
33	20	1	12				
35	20						
37	20						
39	20						
41							
PHASE A TOTAL:				PH	A	B	C
PHASE B TOTAL:					7,160		
PHASE C TOTAL:					8,080		
TOTAL CONNECTED LOAD IN					24,432	360	88
					68 AMP	* 1.25	85 AMP



2 EXTERIOR ELECTRICAL PLAN
Scale: 1/8" = 1'-0"

Rev.	By	Date
TRIMCOS DESIGN & ENG. 11222 RICHMOND AVE. SUITE# 225 HOUSTON TX, 77082 (281) 558-9696 F-3926		
SCHLOTZSKY'S VICTORY LAKES TOWN CENTER TRACK 7A, NEC INTERSTATE HWY 45 & F.M.646 LEAGUE CITY TEXAS 77000		

ARCH Woo Associates, L.L.C. ARCHITECTS - PLANNERS		13734 Bronford Green Dr. Houston, TX, 77083 (832) 228-8128
Date	07-14-2010	
Scale	AS SHOWN	
Drawn by		
Job#:		
SHEET NO:		
E-03		