

1

ENLARGED PLUMBING PLAN

Scale: 1/4"=1'-0"

PIPE PLUMBING MATERIAL LEGEND

1	WATER PIPING INSIDE BUILDING WILL BE COPPER.
2	SANITARY SEWER IS TO BE SCHEDULE 40 PVC W/DWV FITTINGS
3	VENT PIPING SHALL BE SCHEDULE 40 PVC
4	CLEANOUTS SHALL BE ZURN OR APPROVED EQUAL
5	WATER LINES ABOVE SLAB SHALL BE TYPE "L" COPPER. WATER LINES BELOW THE SLAB SHALL BE TYPE "M".
6	HOT WATER: INSULATION 1" FIBERGLAS PIPE
7	GAS PIPING: WILL BE BLACK IRON PIPE

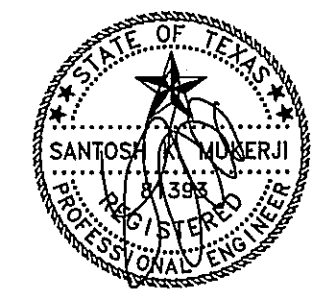
PLUMBING SYMBOL LEGEND

-----	NEW PVC WASTE LINE	LAV	LAVATORY
-----	NEW PVC VENT LINE	WC	WATER CLOSET
-----	NEW COLD WATER LINE	FD	FLOOR DRAIN
-----	HOT WATER LINE	ES	FLOOR SINK
-----	HOT WATER LINE RETURN	3-S	3 COMP. SINK
-----	GAS SUPPLY	FCO	FLOOR CLEANOUT
-----		(HW)	WATER HEATER
⊗	ISOLATION VALVE		
○	PIPE UP		
⊖	PIPE DOWN		

NOTE: NOT ALL SYMBOLS SHOWN MAY BE USED ON THIS PROJECT.

CODED NOTES

- SERVICE SHUT OFF VALVE AND WATER ENTRY
- 3/4" COLD WATER TO DROP DOWN IN WALL TO SERVE WATER CLOSET.
- 1/2" CW AND 1/2" HW TO DROP DOWN IN WALL TO SERVE LAVATORY.
- 1/2" CW AND 1/2" TO DROP DOWN IN WALL TO SERVE TO SINK.
- 1/2" CW AND 1/2" TO DROP DOWN IN WALL TO SERVE TO PREP.SINK.
- 1/2" CW AND 1/2" TO DROP DOWN IN WALL TO SERVE TO MOP SINK.
- 1/2" CW AND 1/2" TO DROP DOWN IN WALL TO SERVE TO 3 COMP.SINK.
- 3/4" COLD WATER TO DROP DOWN IN WALL TO SERVE SODA MACHINE.
- 3/4" COLD WATER TO DROP DOWN IN WALL TO SERVE TEA MACHINE.
- 1/2" COLD WATER TO DROP DOWN IN WALL TO SERVE WATER HEATER.



12/13/10

PLUMBING FIXTURE SCHEDULE

SYMBOL	DESCRIPTION	PROVIDE THE FOLLOWING SIZE BRANCH CONNECTION TO THE DISTRIBUTION MAIN—UNLESS OTHERWISE SPECIFIED				REMARKS	"P" TRAP SIZE	SPECIFICATION
		CW	HW	SAN.	VENT			
WC	WATER CLOSET	3/4"		4"	2"	MOUNT SUPPLY LINE 9" AFF MIN.	INTEGRAL	AM-STANDARD "CADET ELONGATED PRESSURE ASSISTED TOILET" #2333.100 1.5 GALLON PER FLUSH BOWL/TANK COMBO WITH CHURCH 2933S WHITE O.F. SEAT W/COVER AND SELF SUSTAIN HINGE 1/2" C.P. SUPPLY WITH CHROME PLATED STOP AND CHROME PLATED RISER. MOUNT 9" AFF MIN.
LAV	LAVATORY	1/2"	1/2"	2"	2"	--	1 1/4"	LAVATORY WITH RELIANT 2385.001 SINGLE LEVER 4" CENTER SET FAUCET W/POP UP DRAIN 1 1/4" C.P. P.TRAP 3/8" CHROME PLATED ANGLE STOPS W/FLEX RISERS.
SINK	SINK	1/2"	1/2"	2"	2"	--	1 1/4"	
3 COMP. SINK	3COMPARTIMENT SINK	1/2"	1/2"	2"	2"	--	1 1/4"	
P.S.	PREP SINK	1/2"	1/2"	2"	2"	--		
M.S.	MOP SINK	1/2"	1/2"	2"	2"	--		
S.M.	SODA MACHINE	1/2"				--		
S.M.	SODA MACHINE	1/2"				--		
W.H.	WATER HEATER	3/4"				100 GAL.		

Rev.	By	Date
		12/09/10

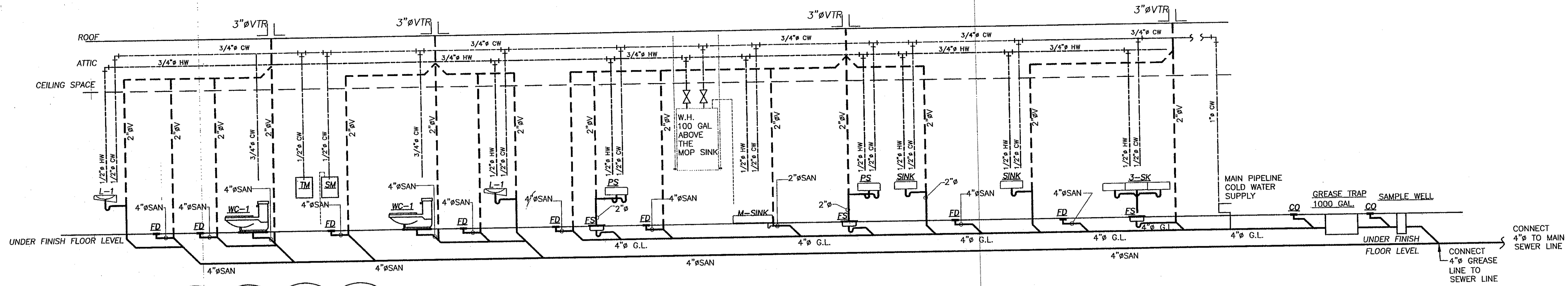
TRIMCOS DESIGN & ENG.
 11222 RICHMOND AVE.
 SUITE# 225 HOUSTON TX, 77082
 (281) 558-9696
 F-3926

SCHLOTZSKY'S VICTORY LAKES TOWN CENTER
 TRACK 7A, NEC INTERSTATE HWY 45 & F.M.646
 LEAGUE CITY TEXAS 77000

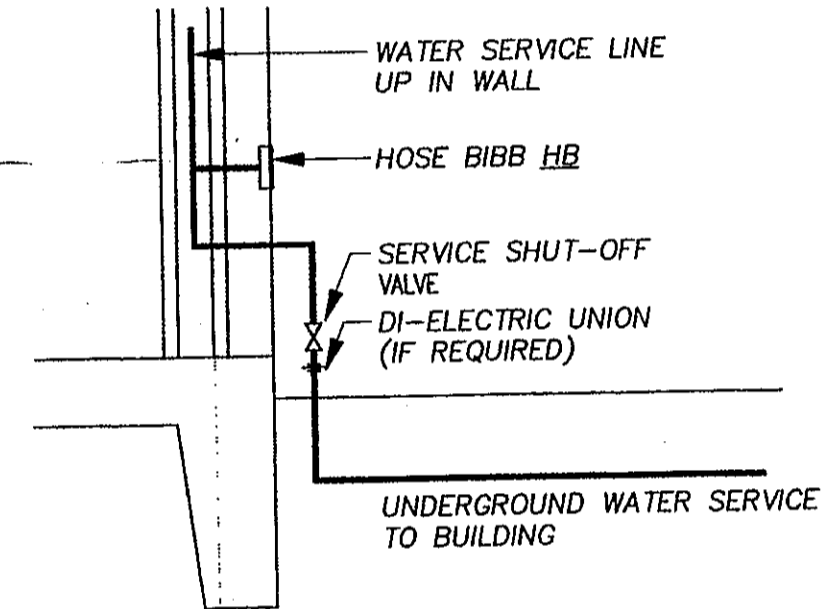
ARCH
 Woo Associates, LLC.
 ARCHITECTS - PLANNERS
 13734 Bronford Green Dr
 Houston, TX. 77083
 (832) 228-8128

Date	07-14-2010
Scale	AS SHOWN
Drawn by	
Job#	
SHEET NO.	

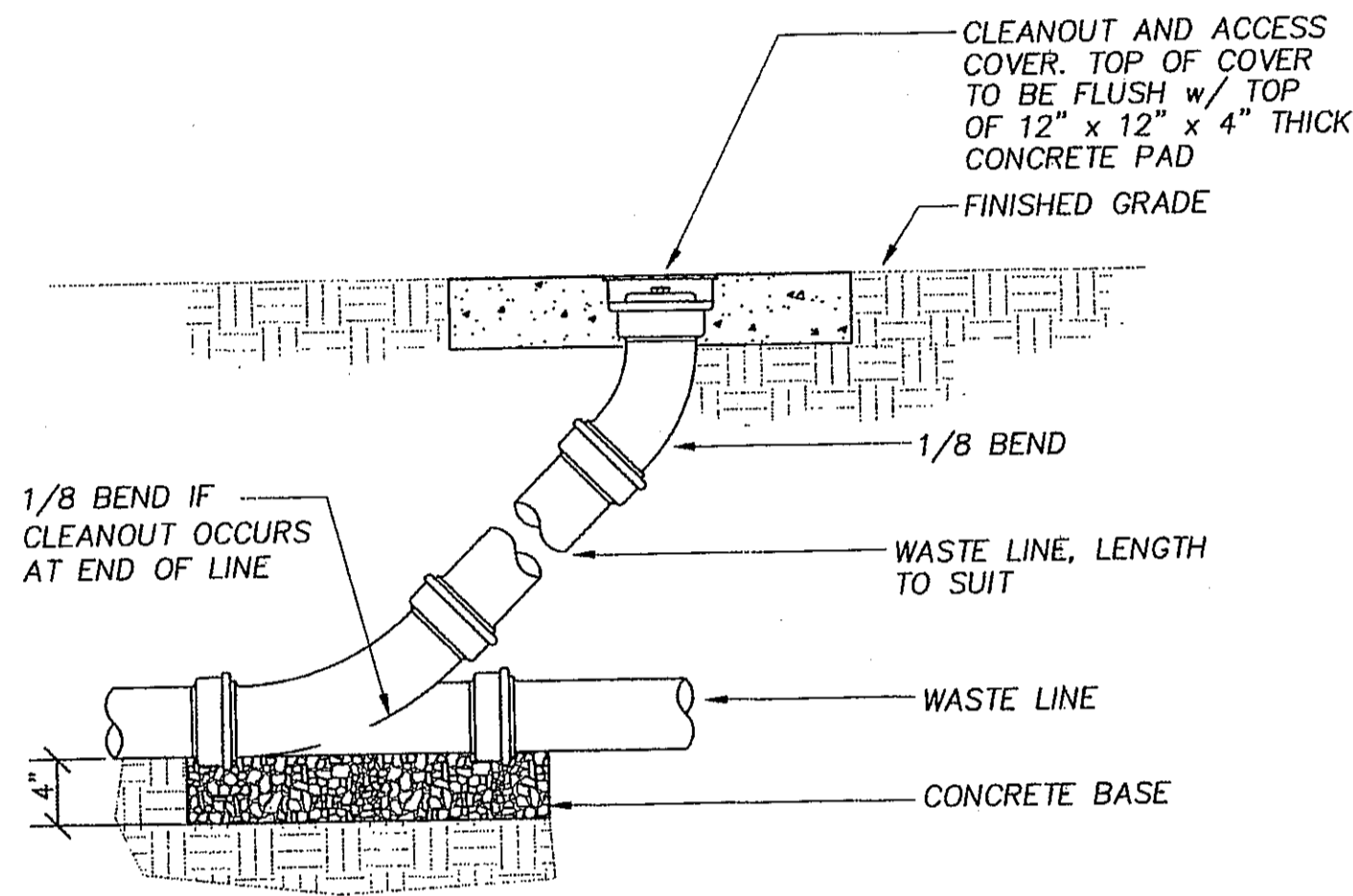
P-01



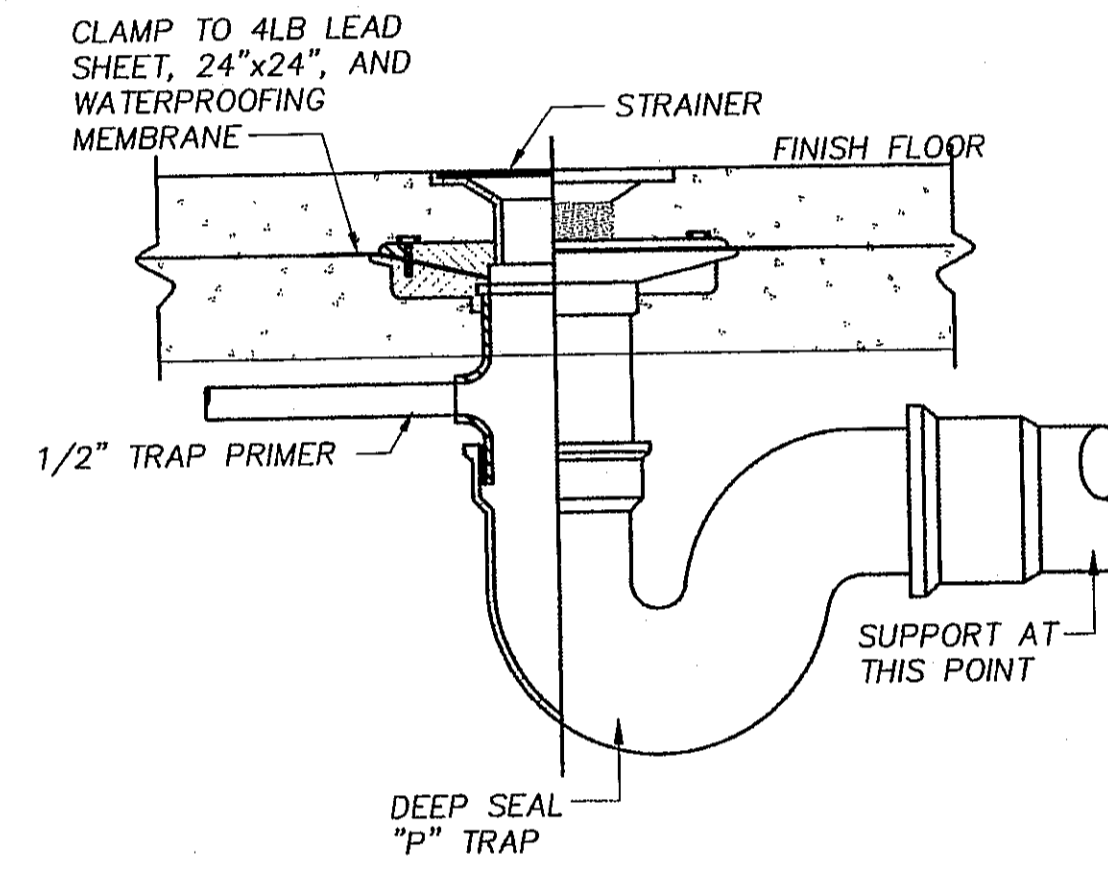
1 PLUMBING RISER DIAGRAM
Scale: N.T.S.



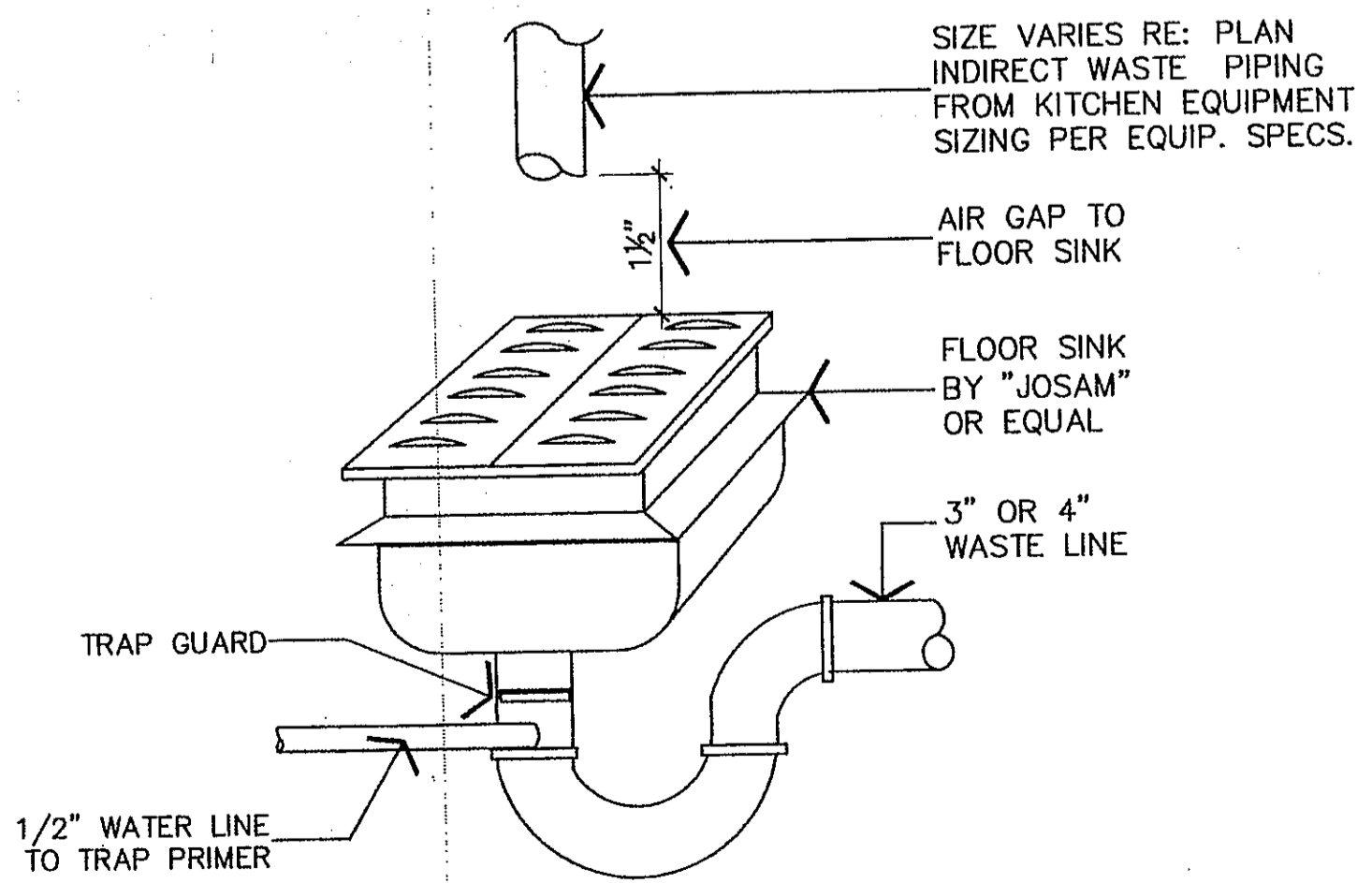
3 BUILDING WATER ENTRY DETAIL
Scale: NOT TO SCALE



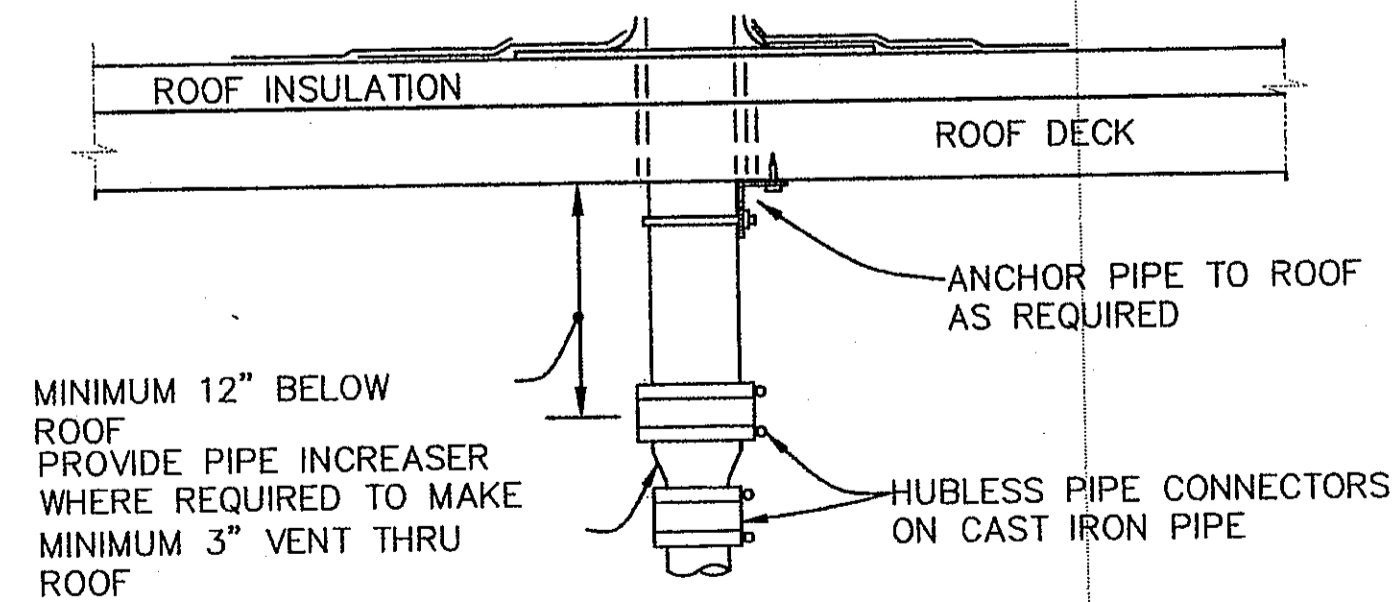
4 EXTERIOR CLEANOUT DETAIL
Scale: NOT TO SCALE



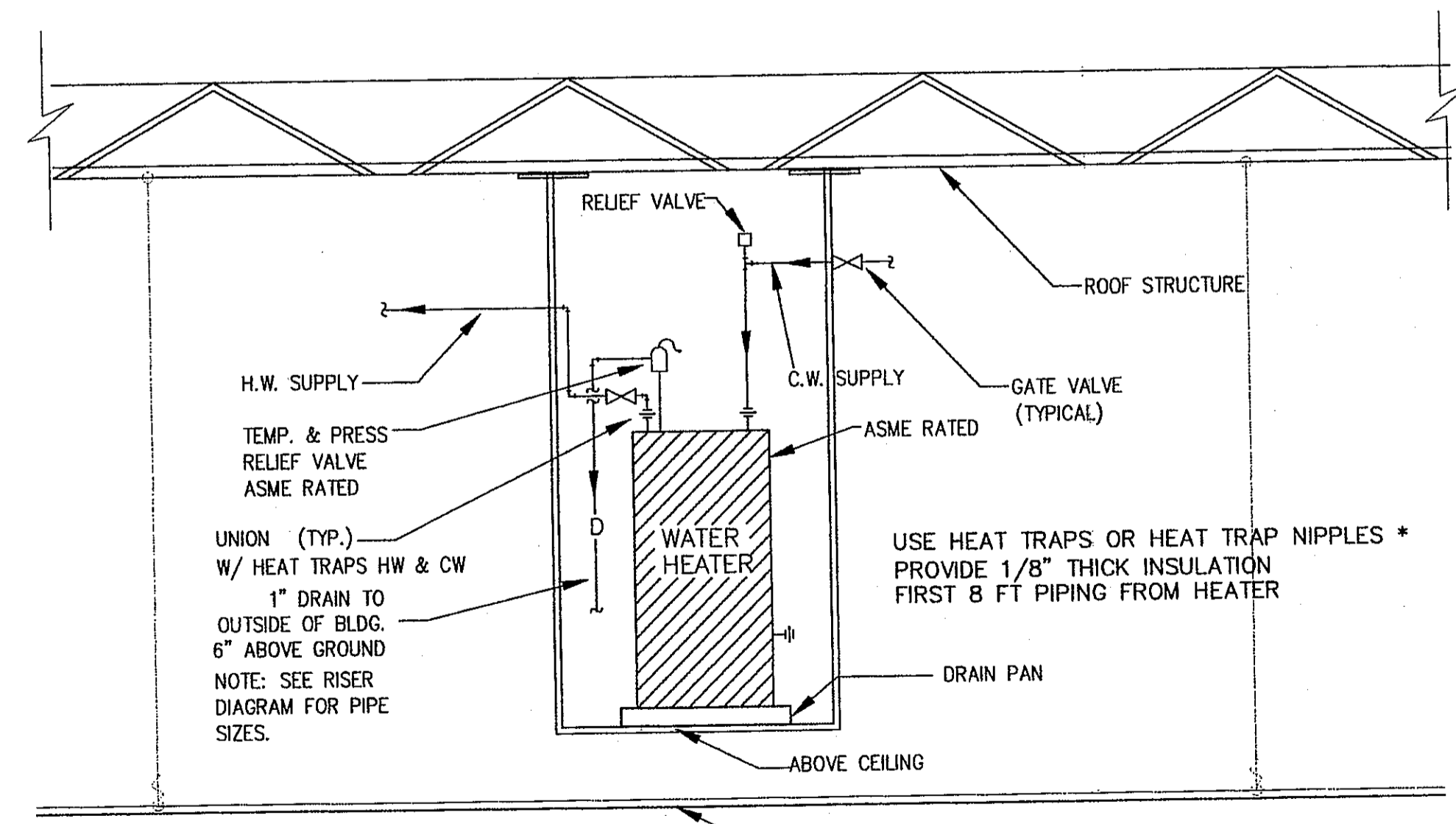
5 FLOOR DRAIN DETAIL
Scale: NOT TO SCALE



6 FLOOR SINK DETAIL AIR GAP PIPING DETAIL
Scale: N.T.S.



7 VENT TRHU ROOF DETAIL
Scale: NOT TO SCALE



8 WATER HEATER DETAIL
Scale: N.T.S.

NOTE: PLUMBING CONTRATOR SHALL PROVIDE A TIME SWITCH TO SWITCH OFF THE USAGE TEMPERATURE MAINTENANCE SYSTEM DURING EXTENDED PERIODS WHEN THE HOT WATER IS NOT REQUIRED



Rev.	By	Date
		12/09/10

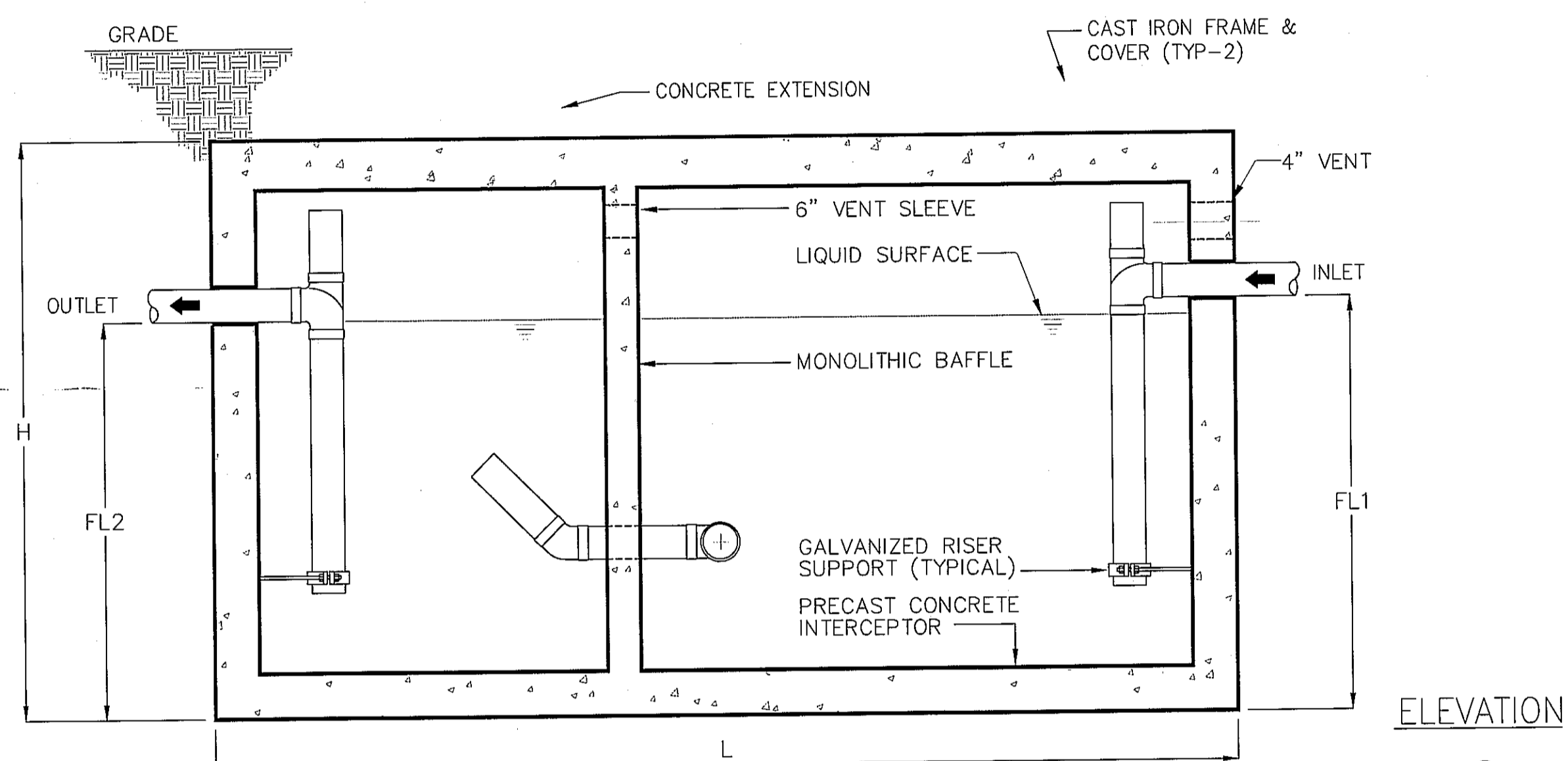
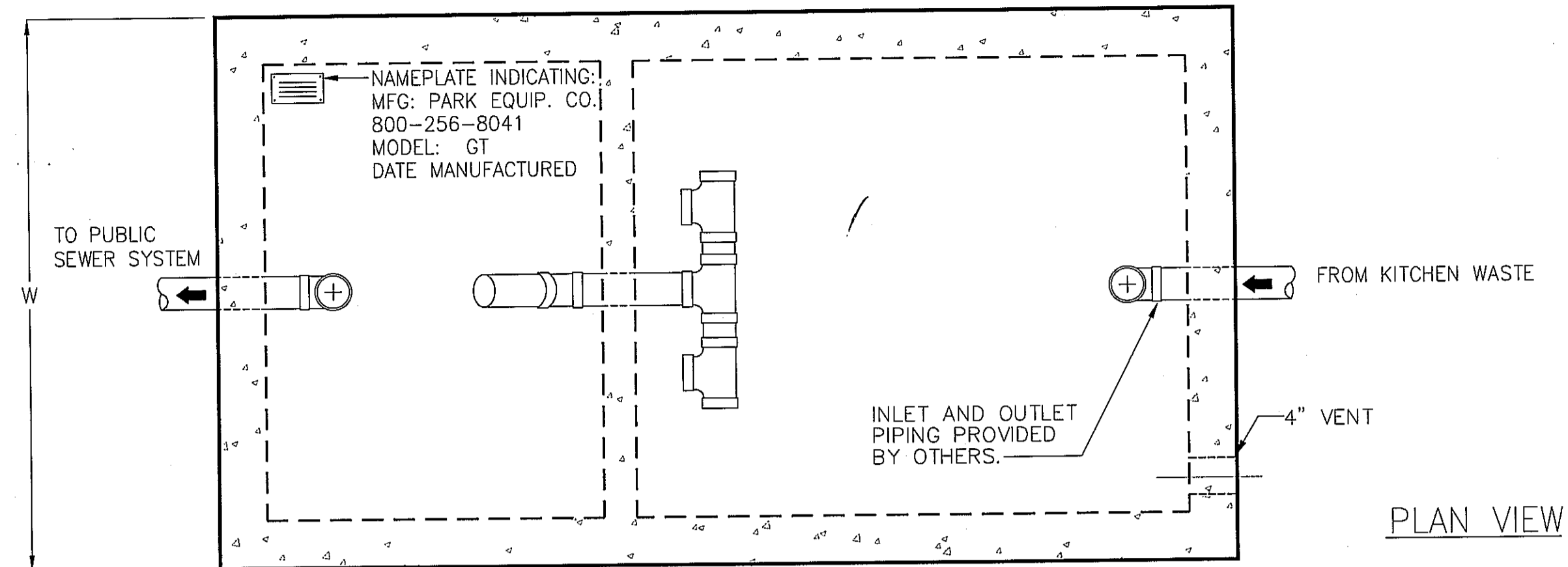
TRIMCOS DESIGN & ENG.
11222 RICHMOND AVE.
SUITE# 225 HOUSTON TX, 77082
(281) 556-9696
F-3926

SCHLOTZSKY'S VICTORY LAKES TOWN CENTER
TRACK 7A, NEC INTERSTATE HWY 45 & F.M.646
LEAGUE CITY TEXAS 77000

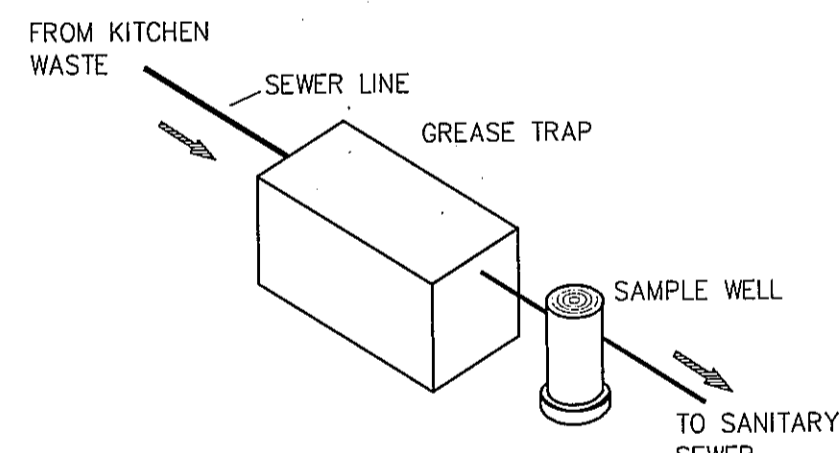
ARCH
Woo Associates, LLC
ARCHITECTS - PLANNERS
13734 Branford Green Dr.
Houston, TX, 77083
(832) 228-8128

Date	07-14-2010
Scale	AS SHOWN
Drawn by	
Job#:	
SHEET NO:	

P-02



© Park 2006



Typical applications include commercial and industrial food service kitchens where excessive grease may interfere with the proper drainage of the sewer system. The grease interceptor is generally buried below grade for gravity flow sewer systems. A sample well is utilized on the outlet side for sampling by the local water authority.

Specifications

CONCRETE : Class 1 concrete with design strength of 4500 PSI at 28 days. Unit is of monolithic construction at floor, first stage of wall and baffle with sectional riser to required depth. (Monolithic baffle required, slide-in type is not acceptable)

REINFORCEMENT: Grade 60 reinforced with steel rebar conforming to ASTM A615 on required centers or equal.

C.I. CASTINGS: Manhole frames, covers or grates are manufactured of grey cast iron conforming to ASTM A48-76 Class 30. Manhole shall be nominal 24 inch diameter and be traffic duty.

GREASE INTERCEPTOR SCHEDULE								
MODEL NO.	CAPACITY USGal	GREASE CAP. (LBS)	EMPTY WT (LBS)	LENGTH L	WIDTH W	HEIGHT H	INLET FL1	OUTLET FL2
GT-500	500	1,200	7,000	7'-10"	4'-4"	4'-6"	3'-3"	3'-0"
GT-750	750	1,700	11,000	7'-10"	4'-4"	6'-0"	4'-5"	4'-2"
***GT-1000	1,000	2,300	13,200	8'-8"	5'-0"	6'-0"	4'-9"	4'-6"
GT-1250	1,250	2,900	15,500	9'-2"	5'-8"	6'-0"	4'-9"	4'-6"
GT-1500	1,500	3,500	18,000	9'-2"	5'-8"	7'-0"	5'-9"	5'-6"
GT-2000	2,000	4,600	24,500	9'-0"	6'-0"	8'-0"	6'-9"	6'-6"
GT-2500	2,500	5,700	27,500	13'-0"	7'-0"	7'-0"	5'-9"	5'-6"
GT-3000	3,000	6,900	30,000	13'-0"	7'-0"	8'-0"	6'-9"	6'-6"
GT-3500	3,500	8,000	31,000	13'-0"	7'-0"	8'-6"	7'-3"	7'-0"
GT-4000	4,000	9,300	39,000	16'-0"	8'-6"	7'-0"	5'-9"	5'-6"

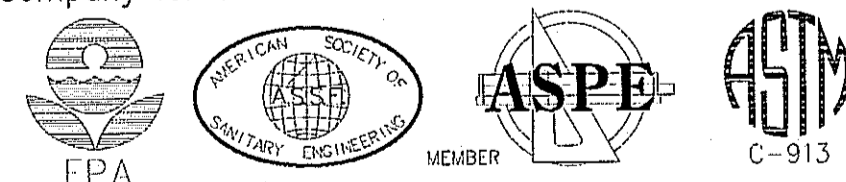
OTHER SIZES ARE AVAILABLE. CONTACT US FOR MORE INFORMATION

Engineering Data

The grease interceptor is structurally & hydraulically engineered to conform to regional plumbing codes recommended in most cities. Consult with local authorities for specific application requirements.

Shop drawings shall include complete structural & buoyancy calculations certified by a licensed professional engineer.

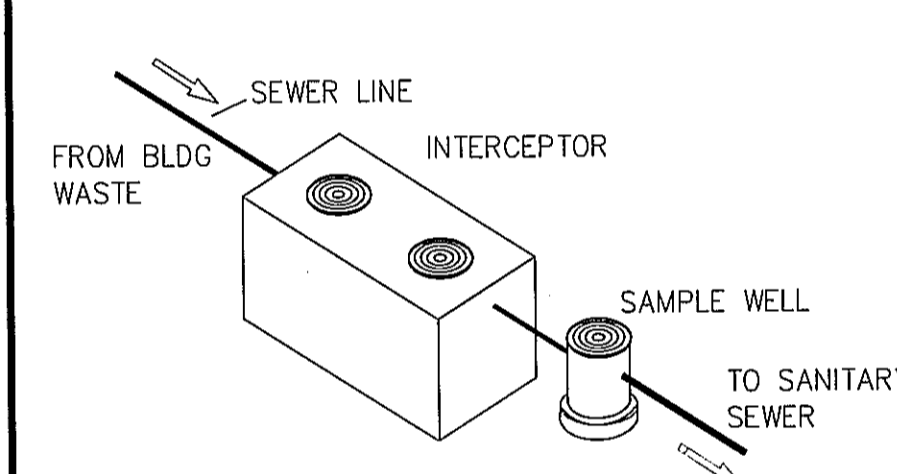
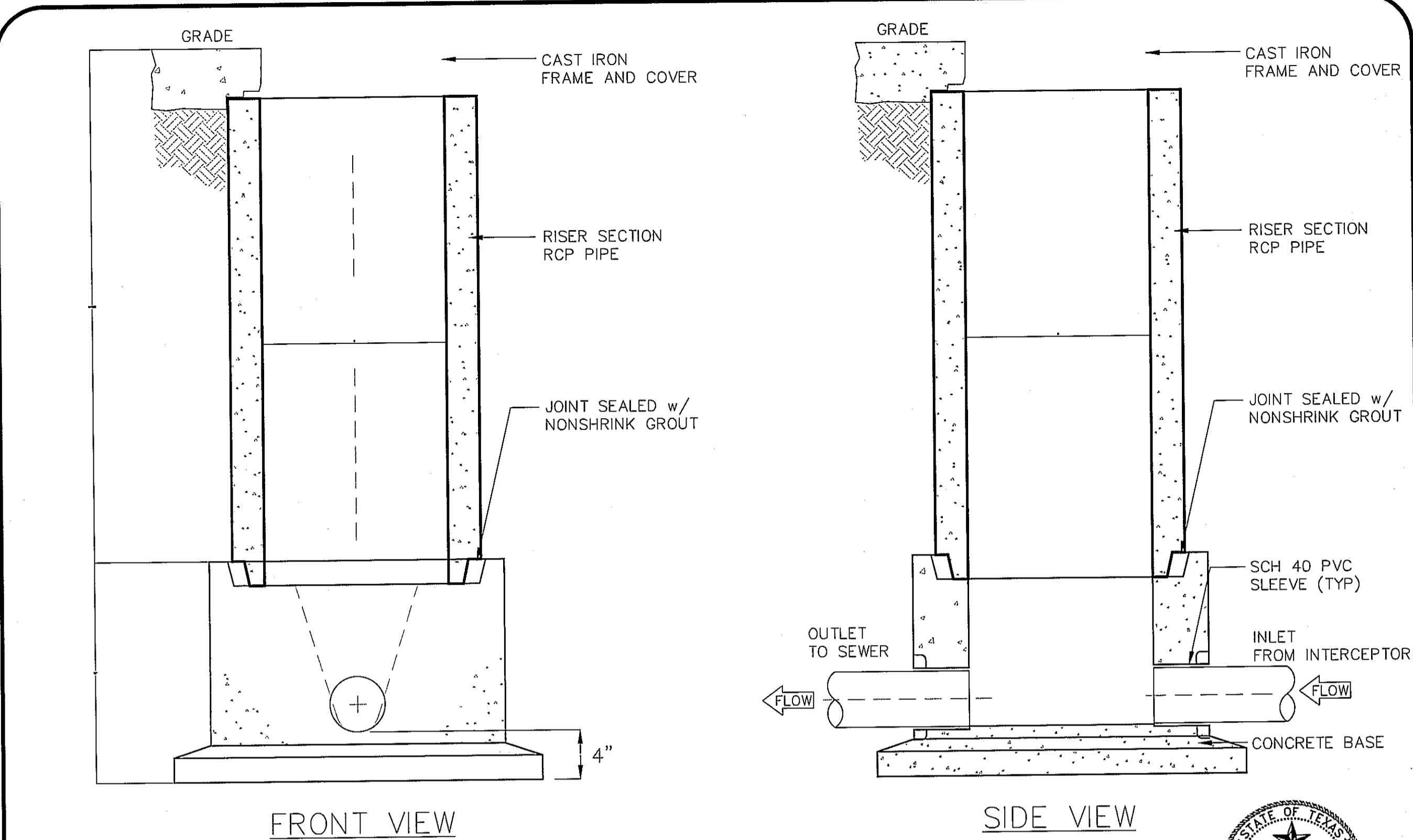
Consult with Park Equipment Company for exact excavation dimensions & shipping information.



"Expect the Best"

GREASE INTERCEPTOR SERIES GT
500 THRU 4000 GALLON CAPACITY

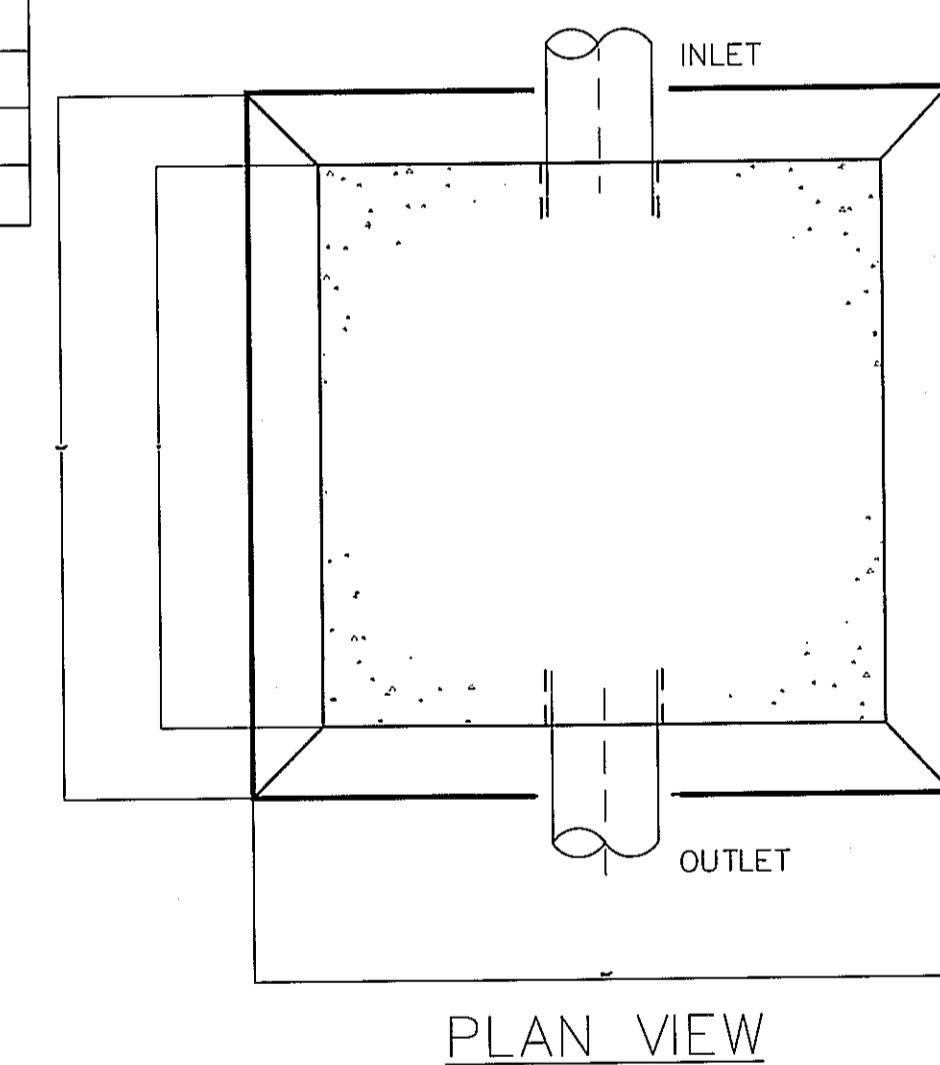
SCALE	NONE	DWG. NO.	GT-1	REV.	A
DATE	12/06				



MODEL	DIAMETER "D"	IN & OUT PIPE SIZE	WIDTH "W"
SWB-154	15"	4"	24"
SWB-156	15"	6"	24"
SWB-184	18"	4"	28"
SWB-186	18"	6"	28"
SWB-244	24"	4"	34"
SWB-246	24"	6"	34"



12/13/10



NOTES

- SAMPLING WELL MUST BE INSTALLED UNDER A SEPARATE PLUMBING PERMIT.
- USE 15" T&G R.C.P. FOR INSTALLATION FOR INSTALLATION 6'-0" DEEP AND LESS.
- USE 24" T&G R.C.P. FOR INSTALLATION GREATER THAN 6'-0" DEEP. (STD RING AND M.H. COVER REQUIRED)
- SAMPLING WELL MUST BE SET IN A CIRCULAR OR SQUARE CONCRETE PAD (1'-0" GREATER THAN OUTSIDE DIAMETER OF PIPE.)
- INSIDE INSTALLATION NOT PERMITTED, WHERE OUTSIDE INSTALLATION IS POSSIBLE.
- INSTALLATION INSIDE BLDG MUST BE POURED IN PLACE (15"MIN) NO CONCRETE PIPE IS PERMITTED, (AIR-TIGHT COVER REQUIRED.)
- LAWN INSTALLATION MUST BE 4" ABOVE FINISHED GRADE.
- DRIVE & SIDEWALK INSTALLATION MUST BE BROUGHT TO FINISHED GRADE
- TO BE INSTALLED ON PRIVATE PROPERTY, IN AN ACCESSIBLE LOCATION TO CITY PERSONNEL.

©Park 2008

SPECIFICATIONS

CONCRETE : Class 1 concrete with of design strength of 4500 PSI at 28 days. Unit is of monolithic construction at floor and first stage of wall with sectional riser to required depth.

C.I. CASTINGS: Cast iron frames and grates are manufactured of grey cast iron conforming to ASTM A48-76 Class 30, Heavy-Duty AASHTO H-20



"Expect the Best"

SAMPLE WELL BASIN

SCALE	NONE	DWG. NO.	SWB-1	REV.	A
DATE	01/08				

Rev.	By	Date

TRIMCOS DESIGN & ENG.
11222 RICHMOND AVE.
SUITE# 225 HOUSTON TX, 77082
(281) 558-9696
F-3926

SCHLOTZSKY'S VICTORY LAKES TOWN CENTER
TRACK 7A, NEC INTERSTATE HWY 45 & F.M.646
LEAGUE CITY TEXAS 77000

ARCH
Woo Associates, LLC.
ARCHITECTS - PLANNERS
13734 Branford Green Dr.
Houston, TX. 77083
(832) 228-8128

Date	07-14-2010
Scale	AS SHOWN
Drawn by	
Job#:	
SHEET NO:	P-03