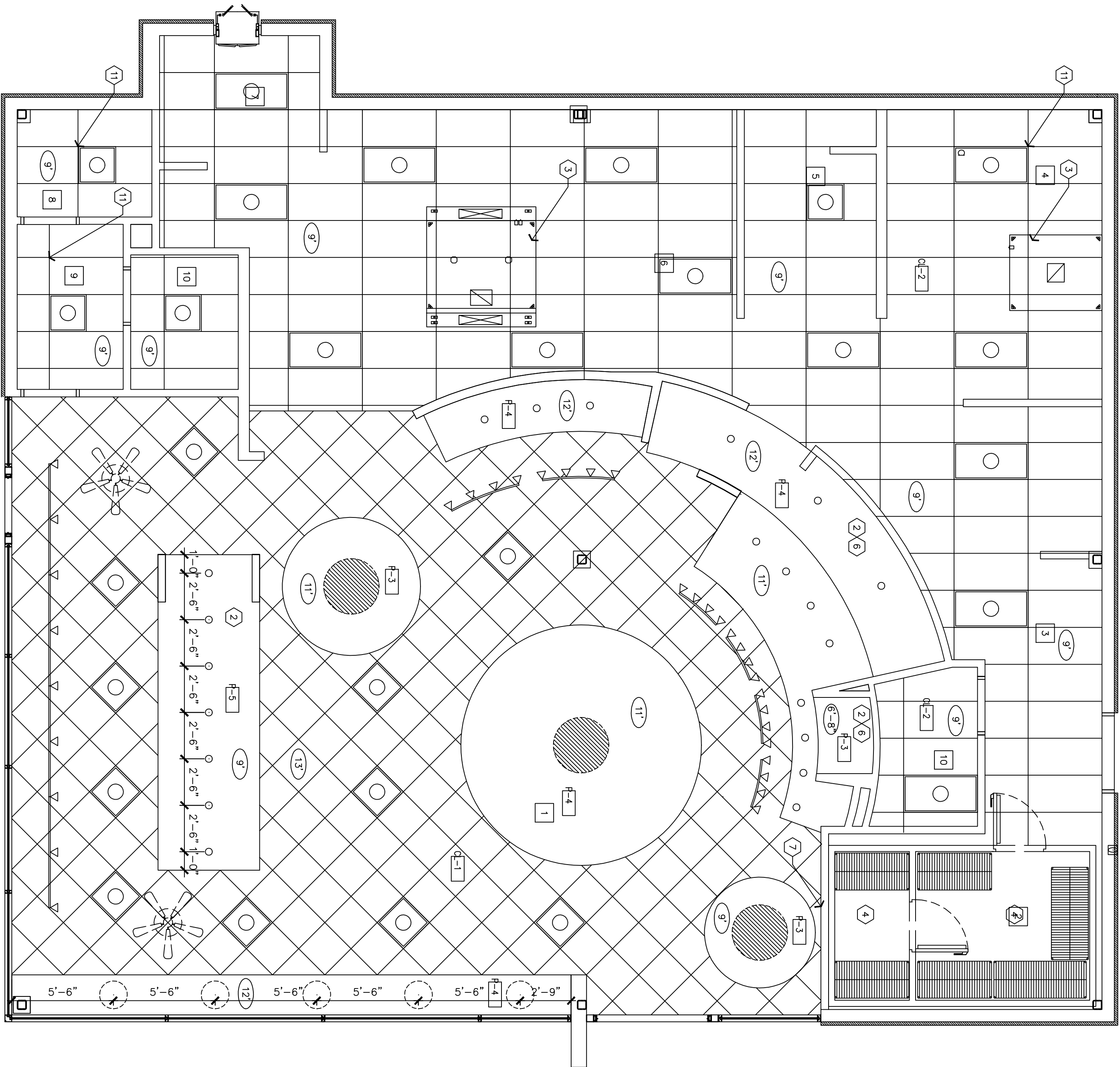


A. REFLECTED CEILING PLAN
SCALE- 1/4"= 1'-0"
AREA: 3000 SQ.FT.



CEILING PLAN KEY NOTES:

- 1 5/8" GYP. BD. OVER USG DIRECT SUSPENSION SYSTEM OR EQUAL.
- 2 5/8" GYP. BD. OVER LIGHT GA. STL. FRAMING AS DETAILED.
- 3 HOOD ABOVE. - SEE MECHANICAL DRAWINGS.
- 4 LINE OF COOLER/FREEZER BELOW.
- 5 CENTER LIGHT FIXTURE OVER TABLE TOP.
- 6 FRAME CURVED SOFFIT W/ SPECIAL CURVED TRACK & ANGLE COMPONENTS. STUD SPACING SHALL BE 8" O.C. TO ACCOMMODATE RADIUS AS REQ'D.
- 7 5/8" GYP. BD. BULKHEAD.
- 8 CENTER GRID W/ 1 SPACE OR BETWEEN WALLS OR BULKHEAD AS SHOWN.
- 9 SUSPENDED SHELVING UNIT
- 10 SOFFIT CABINET TO BE FURNISHED BY OWNERS MILLWORK VENDOR & INSTALLED BY G.C. REFER TO MILLWORK SCHEDULE SHEET M10
- 11 START POINT FOR CEILING GRID.

SYMBOLS LEGEND:

- 2'x4' RECESSED FLUORESCENT LIGHT FIXTURE
- 2'x4' RECESSED FLUORESCENT LIGHT FIXTURE W/ EMERGENCY BATTERY BACK-UP
- 2'x2' RECESSED FLUORESCENT LIGHT FIXTURE
- TRACK LIGHT FIXTURE
- PENDANT LIGHT FIXTURE
- RECESSED DOWNLIGHT
- RECESSED DOWNLIGHT W/EMERGENCY
- CHANDELIER
- FINISH DESIGNATION - SEE
- CEILING HEIGHT (TO FINISH U.N.O.)
- CEILING FAN
- * REFER E DRAWINGS FOR OTHER CEILING ELEMENTS

Rev.	By	Date

SCHLOTZSKY'S
@ VICTORY LAKETOWN CENTER
TRACT 7A NEC INTERSTATE HWY 45 & F.M.646
LEAGUE CITY, TEXAS 77573

ARCH
Woo Associates, LLC.

ARCHITECTS - PLANNERS
13734 Brimford Green Dr.
Houston, TX. 77083
(281) 530-3192

Date	05-26-2010
Scale	AS SHOWN
Drawn by	KW
Job#:	VICTORY LAKE

A2.3