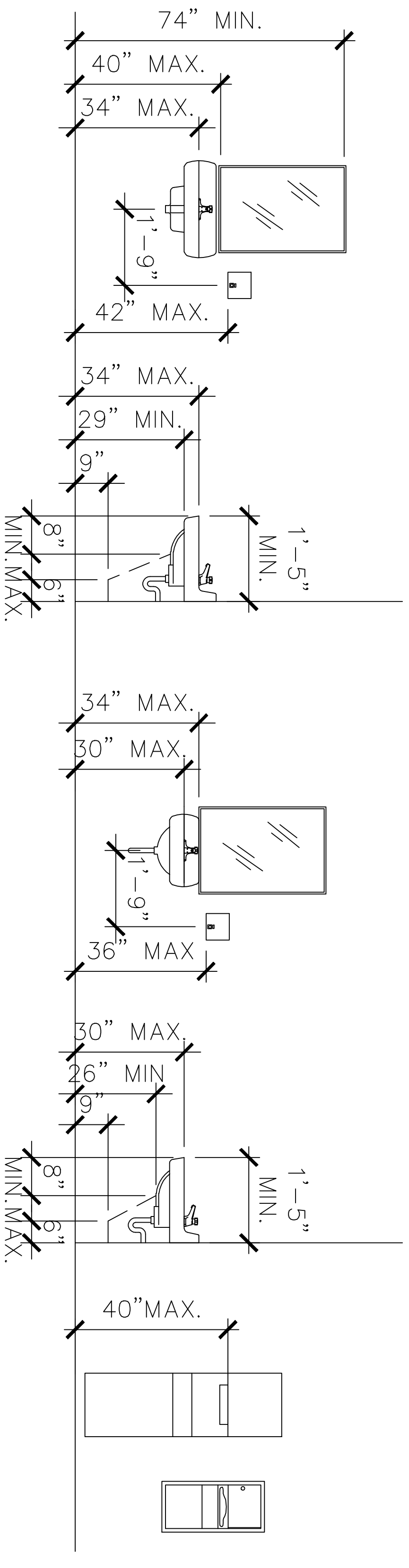


Rev.	By	Date

ACCESSORY NOTES

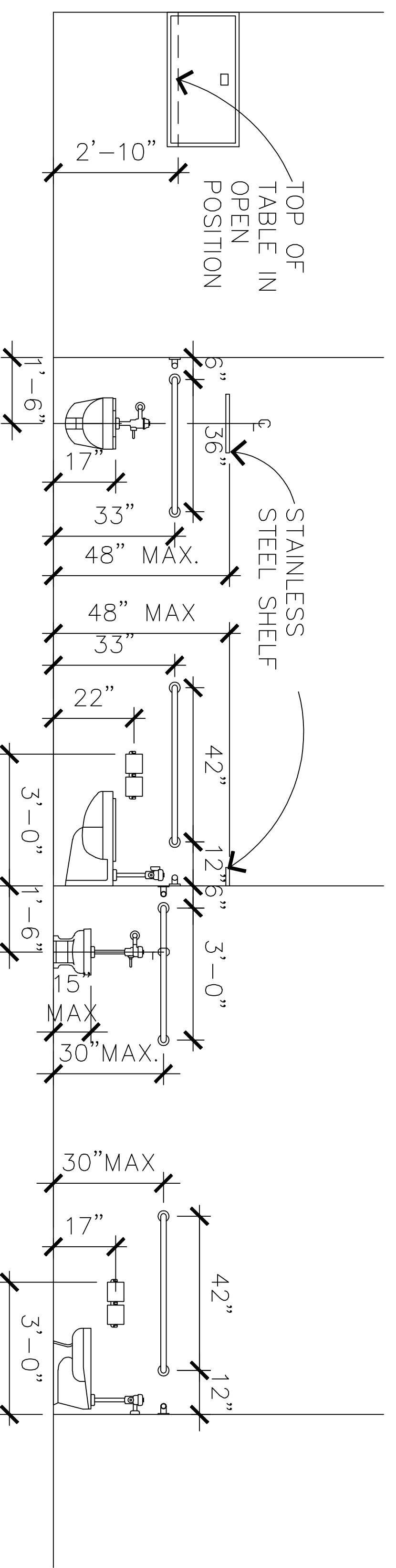
- G.C. TO FURNISH AND INSTALL SCHEDULES TOILET ACCESSORIES IN RESTROOMS.
- G.C. SHALL INSTALL TOILET ACCESSORIES FURNISHED BY OWNER, SEE ACCESSORIES SCHEDULE.
- PROVIDE WOOD BLOCKING AT ALL-HUNG ITEMS.
- ALL ACCESSORIES MUST BE ADA COMPLIANT.
- VERIFY MOUNTING HEIGHT OF TOILET TISSUE HOLDER PRIOR TO MOUNTING. HEIGHT MAY VARY DEPENDING ON UNIT FURNISHED BY OWNER.
- TOILET PARTITIONS SHALL BE PLASTIC LAMINATE UNITS IN STANDARD BLACK 2000 COLOR AS MANUFACTURED BY GLOBAL PARTITIONS (706) 827-2700 OR EQUAL.



STANDARD MOUNTING HEIGHT @ LAVATORY & MIRROR (INSULATE ALL EXPOSED DRAIN AND HOT WATER PIPES, TYP.)

MOUNTING HEIGHT @ CHILDREN LAVATORY & MIRROR (INSULATE ALL EXPOSED DRAIN AND HOT WATER PIPES, TYP.)

PAPER TOWEL DISPENSER/WASTE RECEPTACLE



ACCESSIBLE RECESSED BABY CHANGER

ACCESSIBLE TOILET/GRAB BAR LOCATION & SHELF

ACCESSIBLE TOILET/GRAB BAR LOCATION @ CHILDREN W.C.

TYPE OF CONSTRUCTION

THIS BUILDING IS ONE STORY STEEL FRAME WALL BUILDING OVER CONCRETE SLAB.
CONSTRUCTION TYPE II-B PER IBC 2003.

PROPOSED OCCUPANCY AND OCCUPANT LOAD

GROCERY STORE IS A-2 (ASSEMBLY).
OCCUPANT LOAD FOR A-2 IS ONE PERSON PER 15 SQ. FT. NET FLOOR AREA(TOTAL 1,374 SQ.FT.: 92 PERSONS)
ONE PERSON PER 100 SQ.FT. FOR KITCHEN AREA(TOTAL1037 SQ.FT.:11 PERSONS)
THEREFORE OCCUPANT LOAD IS 103 PERSONS.

**SCHLOTZSKY'S
@ VICTORY LAKETOWN CENTER
TRACT 7A NEC INTERSTATE HWY 45 & F.M.646
LEAGUE CITY, TEXAS 77573**

ARCH
Woo Associates, LLC.
ARCHITECTS - PLANNERS
13734 Brimford Green Dr.
Houston, TX 77083
(281) 530-3192

Date	05-26-2010
Scale	AS SHOWN
Drawn by	KW
Job#:	VICTORY LAKE

A0.0