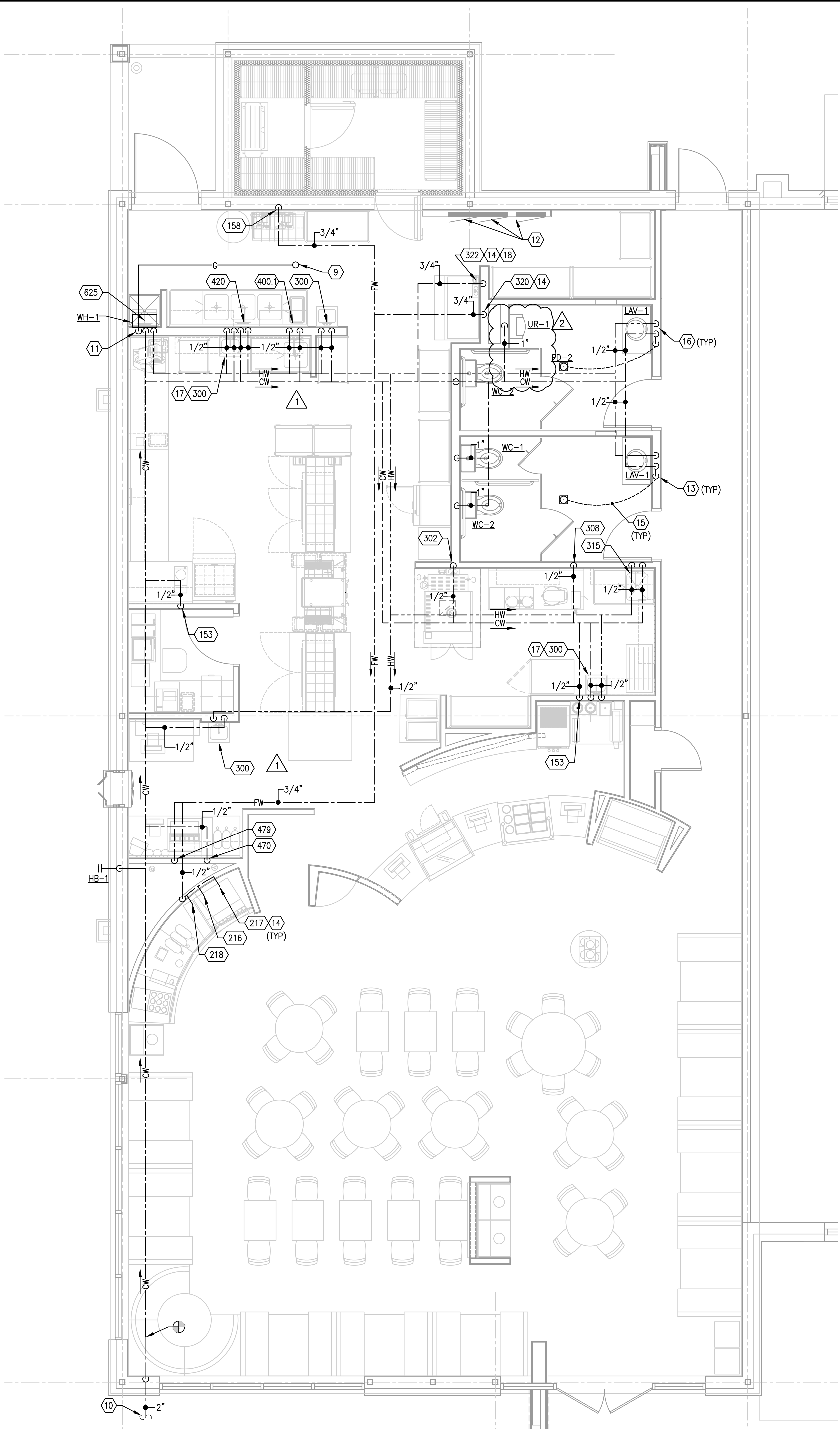


DWV FLOOR PLAN
SCALE: 1/4"=1'-0"

1



WATER AND GAS FLOOR PLAN
SCALE: 1/4"=1'-0"

2

- KEYED NOTES**
- GREASE INTERCEPTOR SHALL BE FURNISHED AND INSTALLED BY THE TENANT. FIELD COORDINATE THE COMPLETE INSTALLATION FOR THE TENANT'S USE AS SHOWN.
 - FIELD COORDINATE INSTALLATION OF THE VTR'S AS SHOWN. PROVIDE MINIMUM 10'-0" HORIZONTAL CLEARANCE FROM MECHANICAL INTAKES.
 - FIELD VERIFY ACTUAL LOCATION AND INVERT ELEVATION OF THE EXISTING 4" SANITARY PIPING AND DOUBLE CLEAN-OUT ON SITE.
 - FIELD COORDINATE THE INSTALLATION OF THE 4" GREASE WASTE PIPING AND DOUBLE CLEAN-OUT ON SITE.
 - ROUTE WALK-IN COOLER CONDENSATE DRAIN LINE AS HIGH AS POSSIBLE AND ALONG WALLS AS SHOWN. INSULATE ALL CONDENSATE PIPING AND PITCH A MINIMUM OF 1/4" PER FOOT IN THE DIRECTION OF FLOW. SEAL ALL COOLER WALL PENETRATIONS WATER TIGHT AND COVER EACH WITH AN ESCUTCHEON PLATE. PROVIDE FULL SIZE TRAP AND EXTEND ABOVE FLOOR AND BEHIND EQUIPMENT FOR AN INDIRECT CONNECTION TO AN APPROVED RECEPTOR.
 - CONDENSATE DRAIN LINE IN THE WALK-IN FREEZER SHALL BE HEAT TRACED TO PREVENT FREEZING. HEAT TRACE TAPE SHALL BE PROVIDED BY THE PLUMBING CONTRACTOR.
 - ROUTE HVAC CONDENSATE DRAIN LINE DOWN THROUGH ROOF IN PITCH PAN AND RUN AS HIGH AS POSSIBLE. INSULATE ALL CONDENSATE PIPING AND PITCH A MINIMUM OF 1/4" PER FOOT IN THE DIRECTION OF FLOW.
 - ROUTE CONDENSATE PIPING DOWN IN WALL AND TERMINATE WITH AN INDIRECT CONNECTION AT APPROVED RECEPTOR.
 - REFER TO MECHANICAL ROOF PLAN FOR CONTINUATION OF GAS PIPING.
 - FIELD VERIFY ACTUAL LOCATION OF OF THE EXISTING 2" DOMESTIC WATER SERVICE, METER, SHUT-OFF, AND BACKFLOW PREVENTION DEVICE.
 - THE DIRECT SEALED GAS FIRED TANKLESS WATER HEATER SHALL BE MOUNTED ON THE WALL ABOVE THE SERVICE SINK.
 - NO PIPING SHALL BE RUN ABOVE OR BELOW ELECTRIC PANELS.
 - COORDINATE INSTALLATION OF ACCESSIBLE TRAP PRIMER VALVE BELOW THE LAVATORY. VALVE SHALL BE RECESSED IN THE WALL AND COVERED WITH ACCESS PANEL.
 - REFER TO SHEET P2.0 FOR BACKFLOW PREVENTION DEVICE REQUIRED FOR A COMPLETE INSTALLATION WITH THIS EQUIPMENT.
 - 1/2" CW BELOW FLOOR, FROM TRAP PRIMER TO RECEPTOR.
 - ROUTE 1/2" HW & CW TO RESTROOM LAVATORY FAUCET. INSTALL SUPPLIES COMPLETE WITH HOT WATER TEMPERING VALVE.
 - ROUTE 1/2" HW & CW TO HAND WASHING FIXTURE. INSTALL SUPPLIES COMPLETE WITH HOT WATER TEMPERING VALVE.
 - COORDINATE INSTALLATION OF ACCESSIBLE LINE SIZED SHUT OFF VALVE TO ICE MAKER. SHUT OFF VALVE SHALL BE RECESSED IN THE WALL AND COVERED WITH ACCESS PANEL.



ID STUDIO 4, LLC
1431 GREENWAY DR, SUITE 150
IRVING, TEXAS 75038
TEL: 972.870.1288
WWW.IDSTUDIO4.COM

CLIENT:
FOCUS Brands
301 S. CONGRESS AVE., STE 11000
AUSTIN, TX 78701
512.236.3600
WWW.FOCUSBRANDS.COM

TBPE FIRM REGISTRATION# F-11678



NOT FOR CONSTRUCTION!
BRIAN EDWARD CHANDLER
83800
Brian Chandler

12-15-11

SCHLOTZSKY'S DELI
THE TRAILS AT 620
8300 N. FM 620 STE 103
AUSTIN, TX. 78776

CLIENT: FOCUS Brands
301 S. CONGRESS AVE. STE 11000
AUSTIN, TX 78701



DATE	DESCRIPTION
11.21.11	ISSUE FOR PERMIT
12.16.11	ISSUE FOR BID

DATE	DESCRIPTION
12.09.11	HEALTH COMMENTS
12.15.11	BUILDING CHANGES

SHEET TITLE:
PLUMBING FLOOR PLANS

SHEET NUMBER:
P1.1

PROJECT NUMBER:
FOC11003