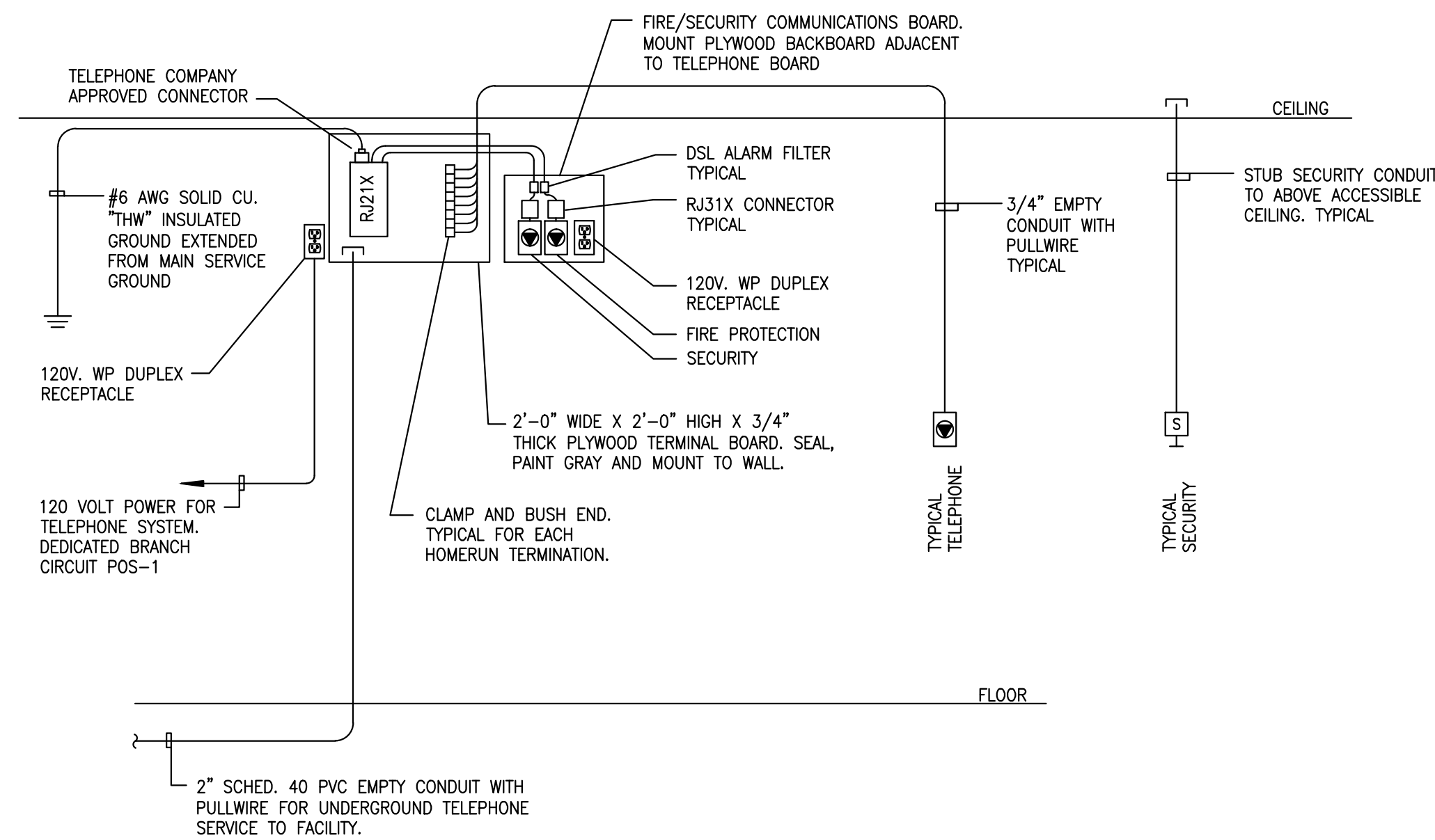


A. PROVIDE DUCT MOUNTED SMOKE DETECTORS IN DUCTWORK AS SHOWN ON MECH PLANS PER SPECIFICATIONS.

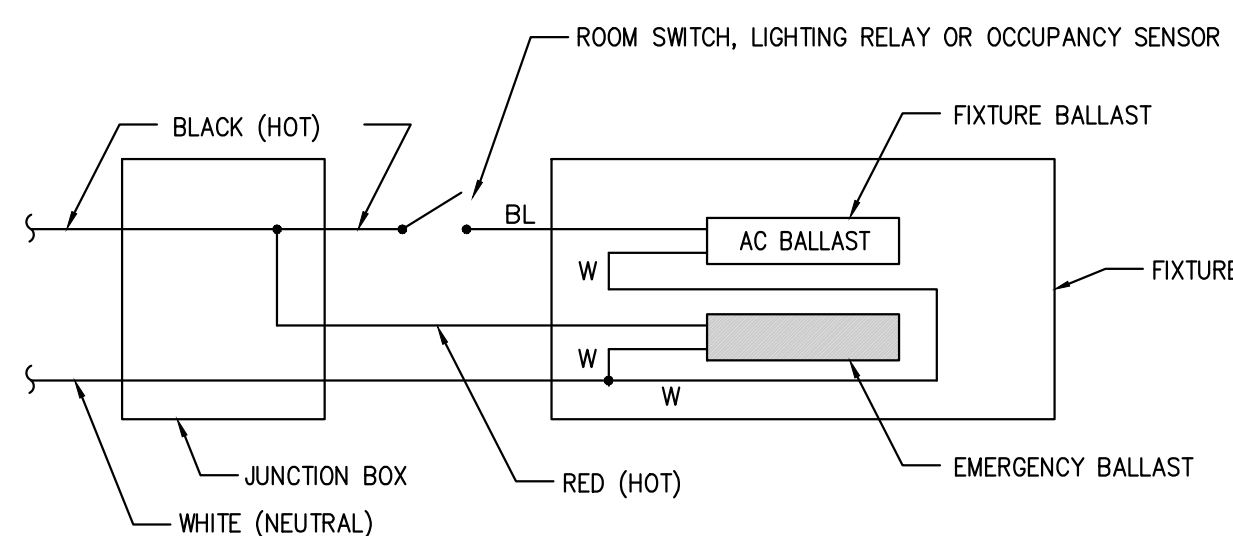
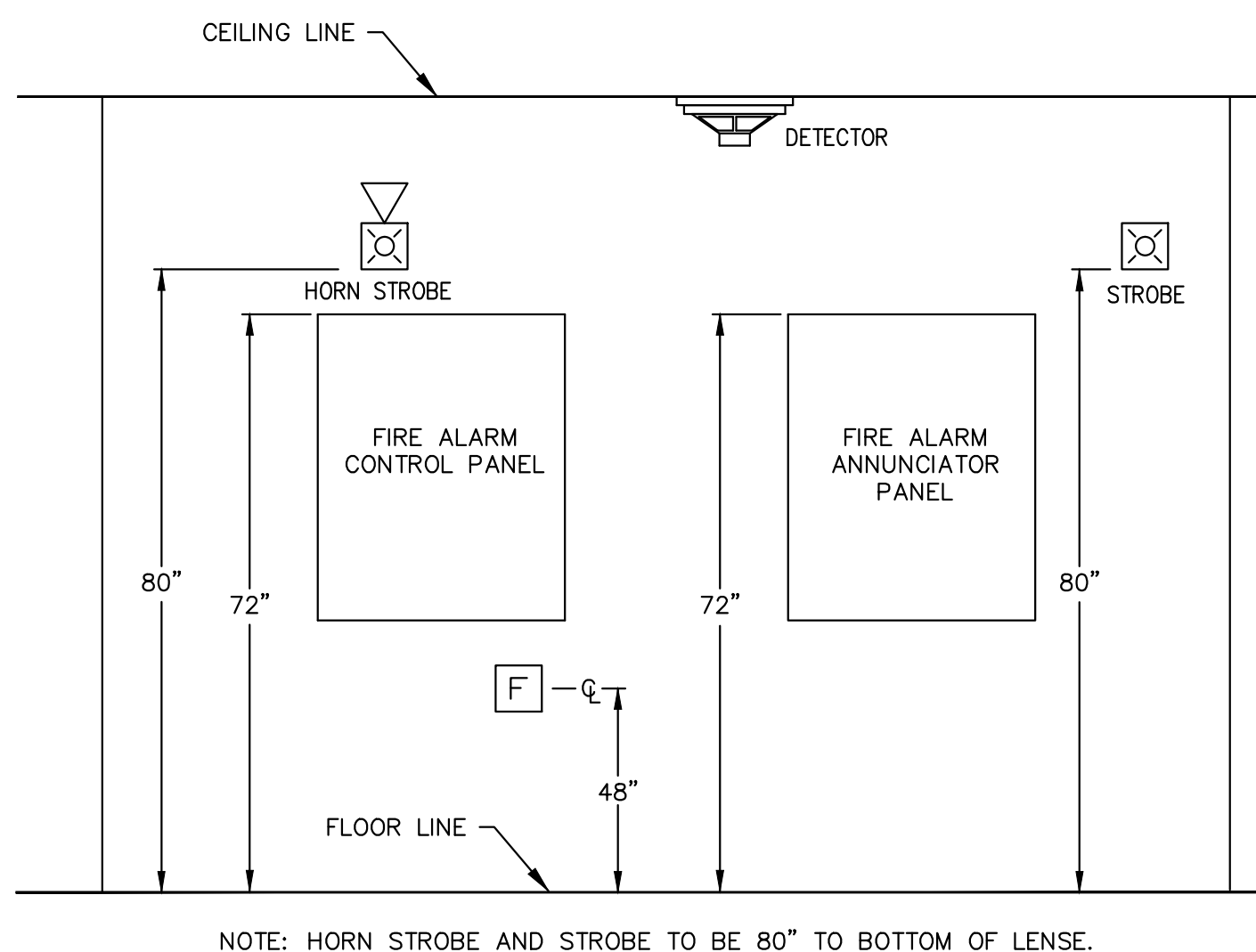
B. FIRE ALARM CONTRACTOR SHALL BE CURRENTLY LICENSED WITH THE STATE AND SUBMIT A COMPLETE FIRE ALARM SUBMITTAL (PLANS, SPECS., CUT SHEETS ETC.) PREPARED BY THE STATE REGISTERED FIRE PROTECTION CONTRACTOR, AND SUBMITTED TO AUTHORITY HAVING JURISDICTION FOR APPROVAL. INFORMATION SHALL NOT BE LIMITED TO THE FOLLOWING.

- 
- DUCT SMOKE DETECTOR AT RTU  
SUPPLY/RETURN (TYPICAL)
- REMOTE TEST SWITCH FOR  
DUCT SMOKE DETECTORS  
LOCATED IN OFFICE SYSTEMS  
SENSOR #RTS451  
(TYPICAL)
- HEAT DETECTOR (TYPICAL)
- STROBES WITH DECIBAL  
LEVEL NOTED  
(TYPICAL)
- 15
- 15
- HORN STROBES WITH  
DECIBAL LEVEL NOTED  
(TYPICAL)
- POS-3
- 1" TO TEL. BOARD
- FIRE ALARM CONTROL PANEL  
(FIELD VERIFY LOCATION)
- FACP
- F
- MANUAL PULL STATION  
(TYPICAL)

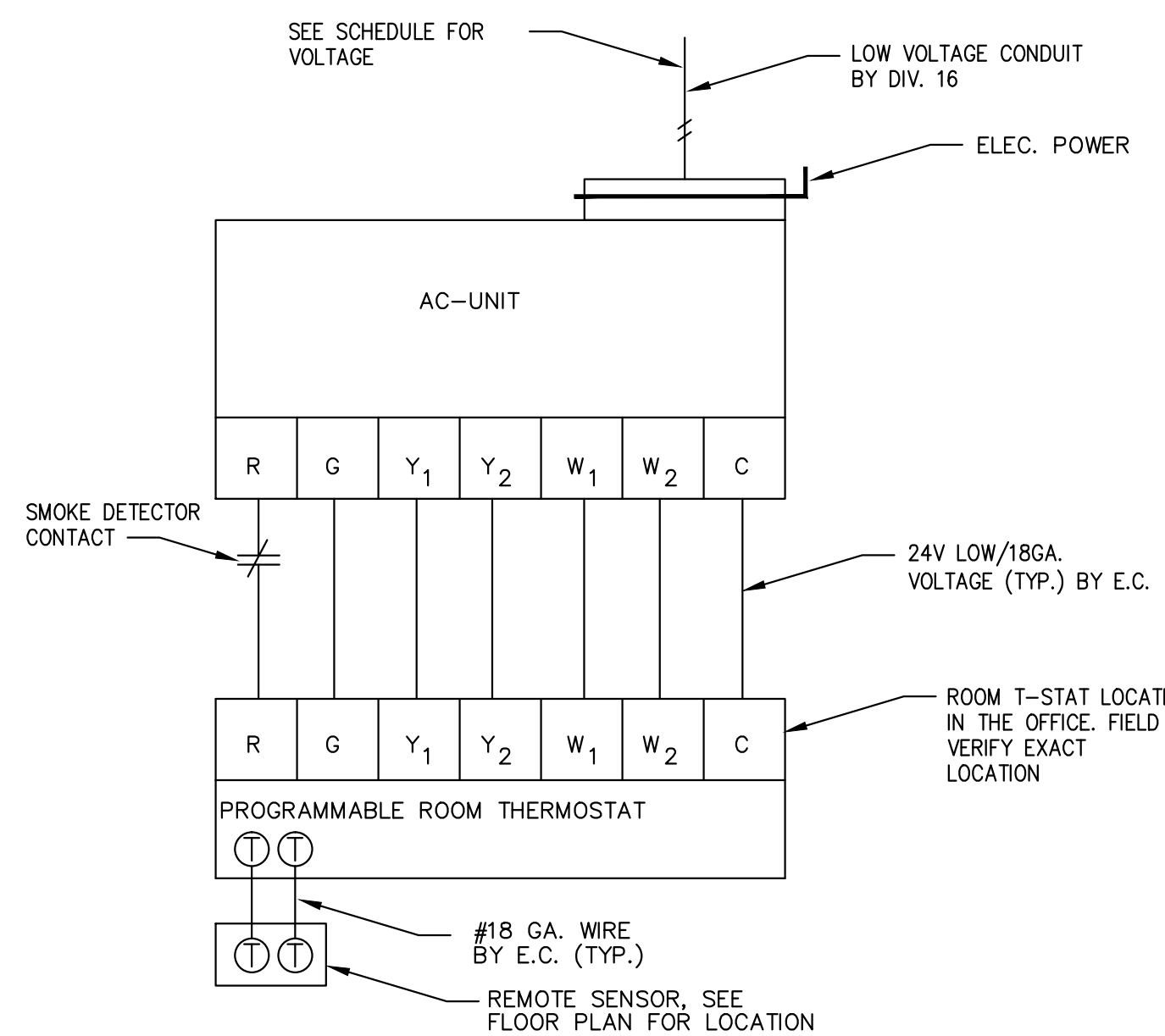
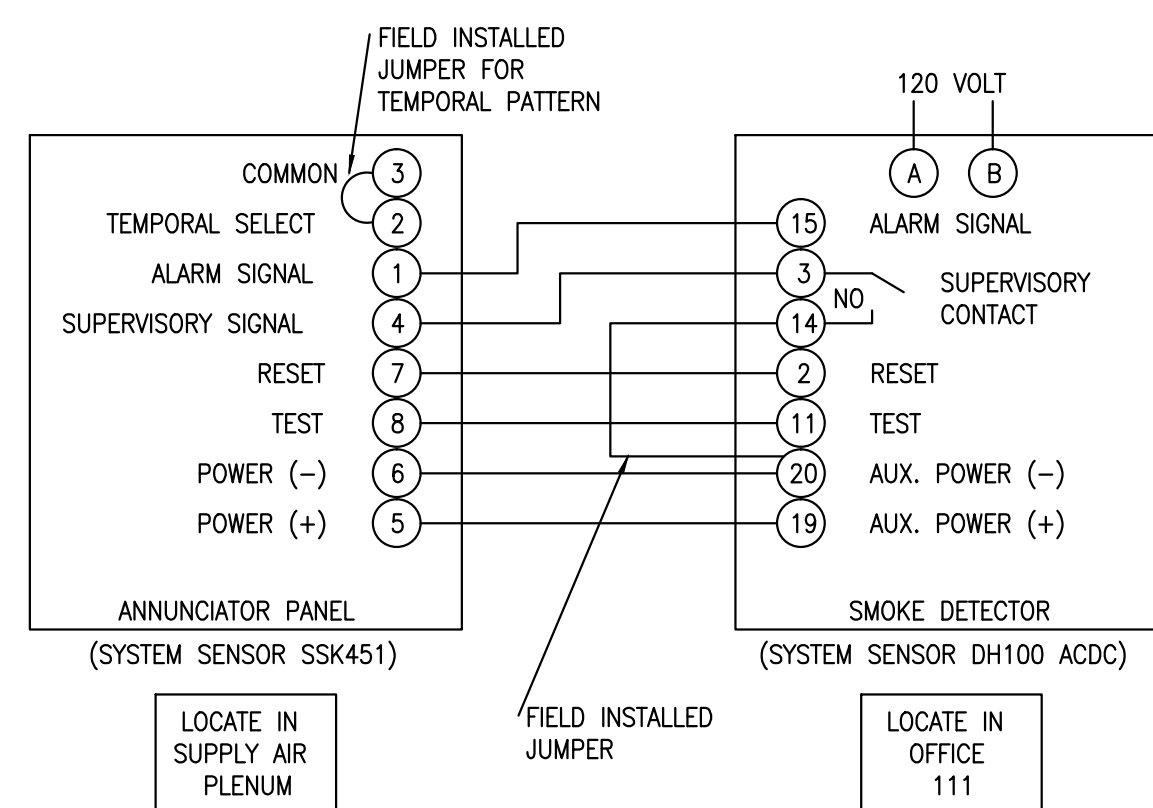
1. VERIFY, COORDINATE AND INCORPORATE THE REQUIREMENTS OF THE TELE. CO. AND ALL GOVERNING CODES IN FORCE, PRIOR TO COMMENCEMENT OF WORK.
2. FURNISH AND INSTALL A RACEWAY SYSTEM OF CABLE AND 3/4" CONDUIT AND PROPERLY SIZED JUNCTION BOXES WITH COVERPLATES FOR THE TELEPHONE SYSTEM AS SHOWN ON THE DRAWINGS AND IN THE DIAGRAM.
3. ALL CONDUIT SHALL ORIGINATE AT THE JUNCTION BOXES, BE NO SMALLER THAN 3/4" ELECTRICAL TRADE SIZE, BE CONTINUOUS AND TERMINATE AT THE SYSTEM TERMINAL. BOARD NEATLY CLAMPED AND WITH BUSHED ENDS. HOME RUNS SHALL BE LIMITED TO ONE (1) TELEPHONE OUTLET IN ONE 3/4" CONDUIT.
4. THERE ARE MULTIPLE DEDICATED TELEPHONE LINES. AND THEY SHALL BE SEGREGATED FROM EACH OTHER AND SHALL BE SEGREGATED FROM THE STANDARD TELEPHONE LINES.
5. FURNISH AND INSTALL A 200 LB TEST NYLON PULL LINE IN ANY EMPTY CONDUIT. TAG EACH END OF NYLON PULL AS TO SERVICE AND THE LOCATION OF THE OPPOSITE TERMINUS OF THE CONDUIT.
6. ALL CONDUITS SHALL CONTAIN ONE (1) HIGH QUALITY 4 PAIR CAT III PLENUM CABLE. TELEPHONE LINES PULLED WITH PROPER INSTALLED JPLCS. LINES MUST BE LABELED AT TELEPHONE BOARD.



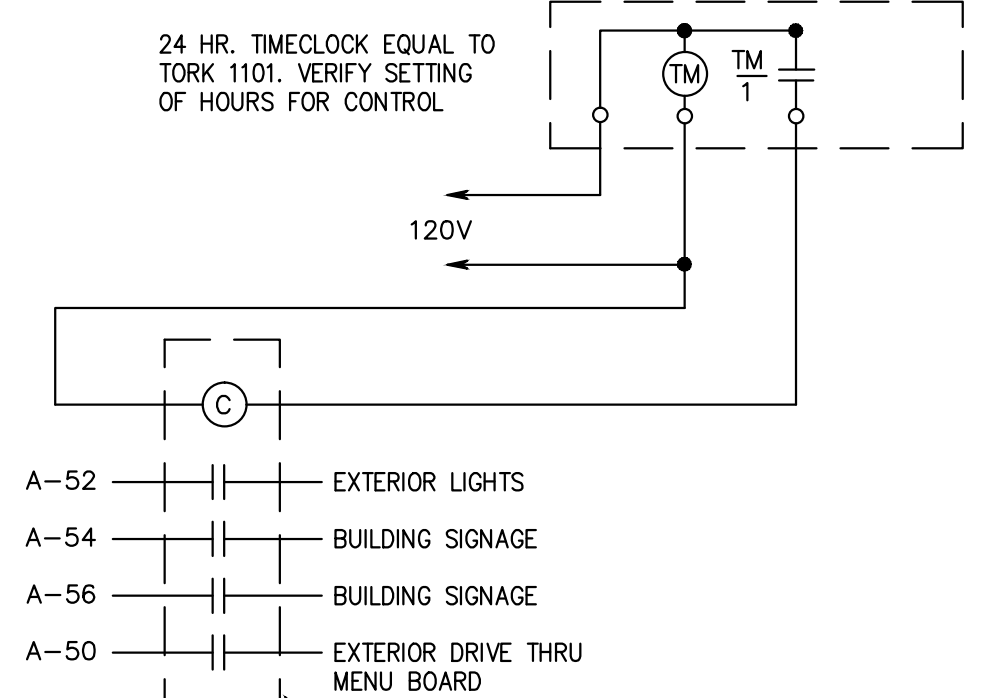
## 1



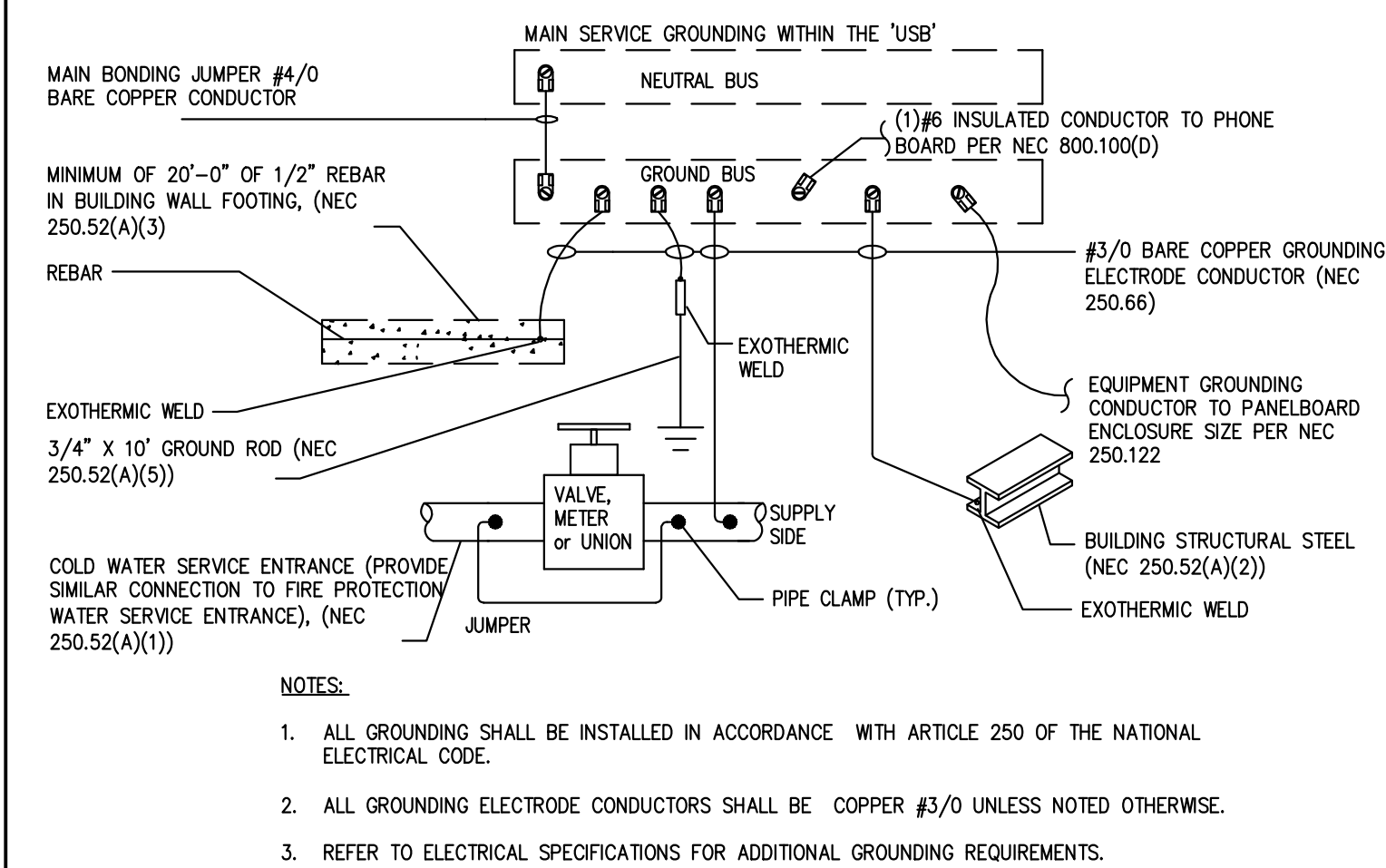
## 2



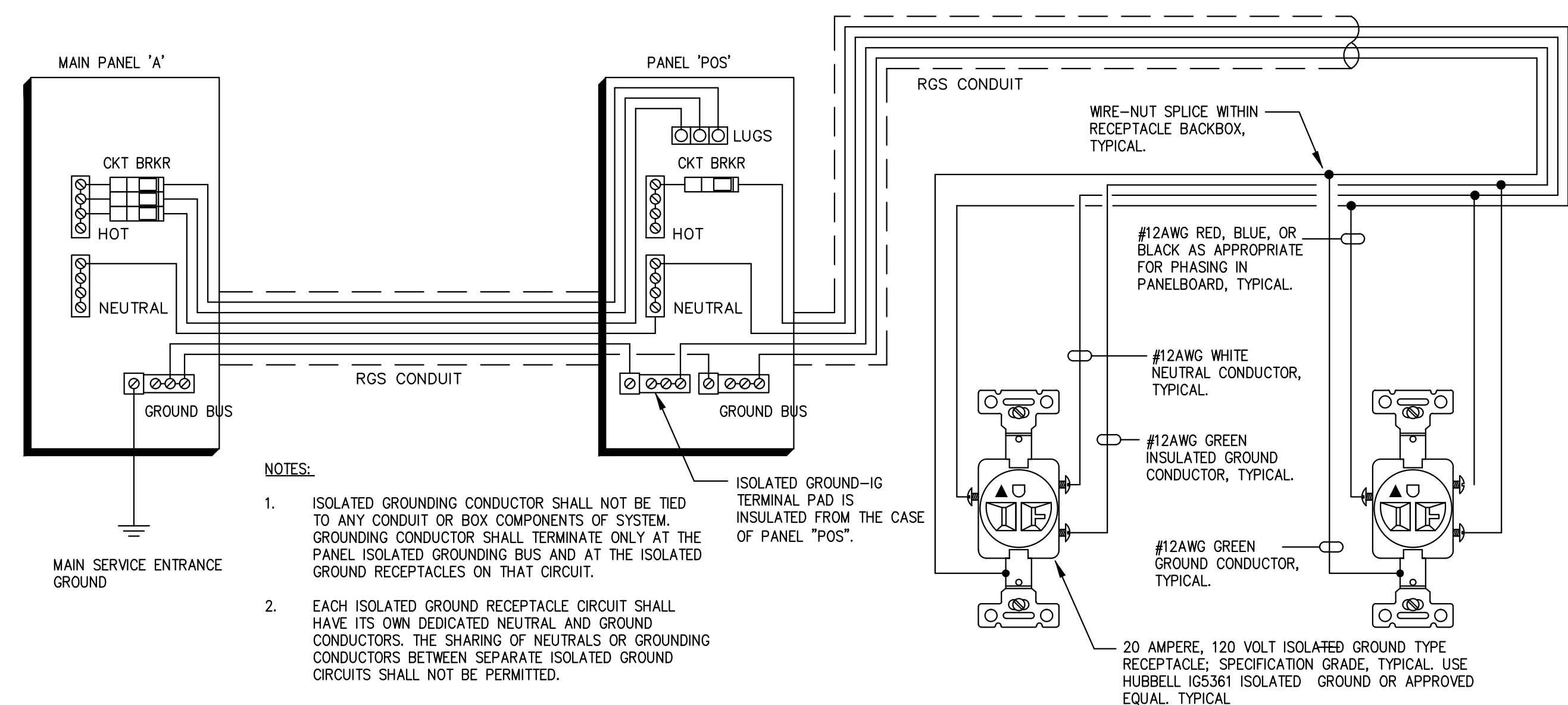
## 3



## 5



## 8



## 9

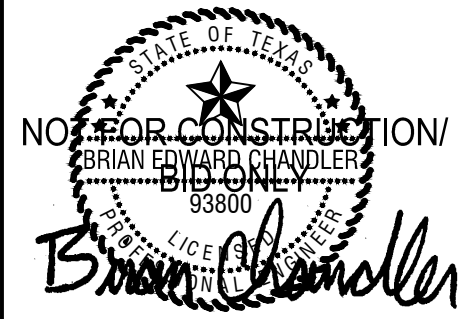


1431 GREENWAY DR. SUITE 150  
IRVING, TEXAS 75038  
TEL: 972.870.1288  
WWW.IDSTUDIO4.COM

CLIENT

**FOCUS Brands**  
301 S. CONGRESS AVE., STE 11000  
AUSTIN, TX 78701  
512.236.3600  
[www.focusbrands.com](http://www.focusbrands.com)

TBPE FIRM REGISTRATION# F-11678



12-15-11

**SCHLOTZSKY'S DELI**  
**THE TRAILS AT 620**

8300 N. FM 620 STE 103

CLIENT: FOCUS Brands  
301 S. CONGRESS AVE. STE 11000  
AUSTIN TX 78701



DATE	DESCRIPTION
11.21.11	ISSUE FOR PERMIT
12.16.11	ISSUE FOR BID

[illegible]

SHEET TITLE:

## ELECTRICAL DETAILS

SHEET NUMBER

## E2.0

PROJECT NUMBER

FOC11003