

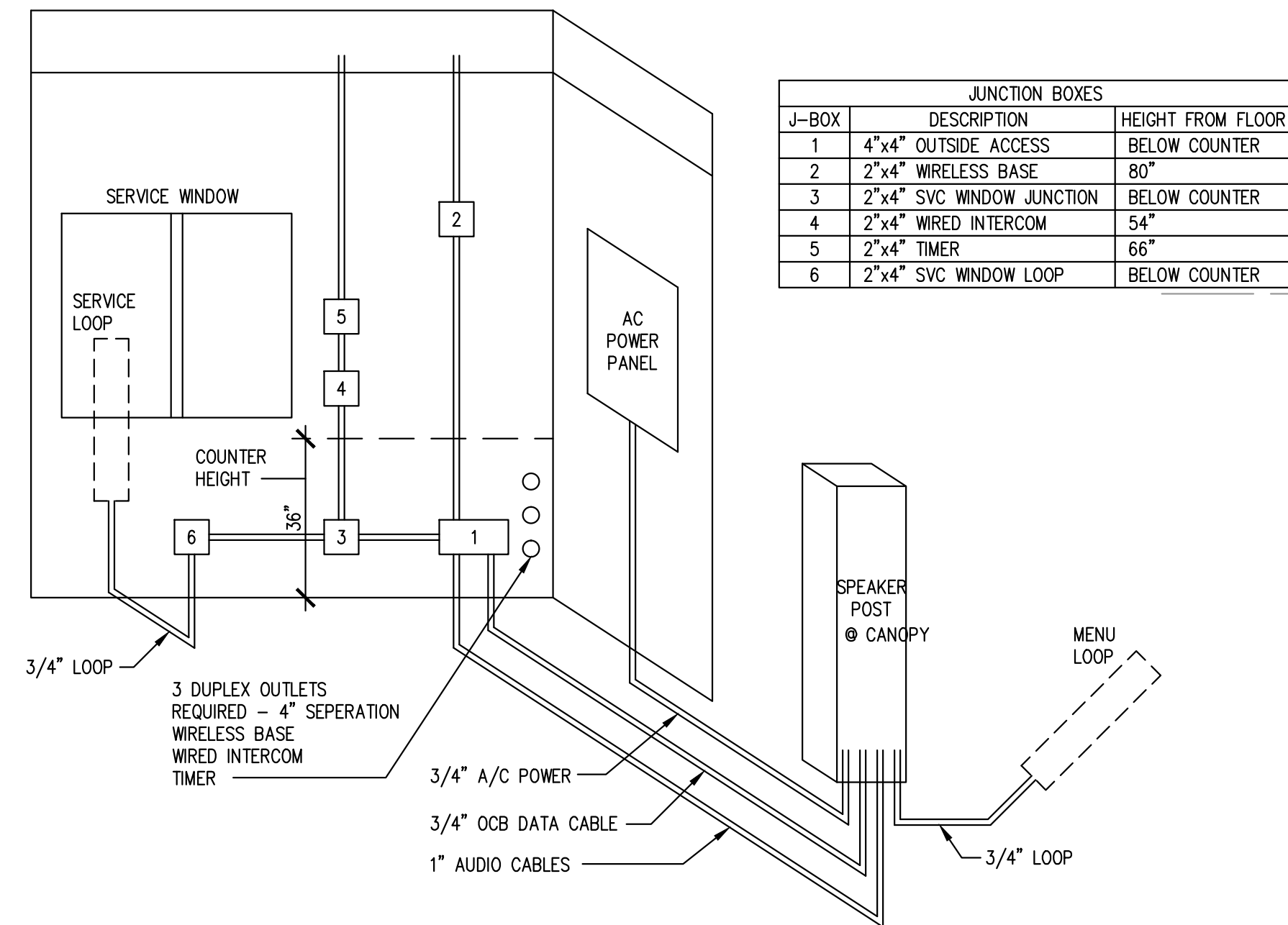
ETHERNET CAT 5-10 BASE T CABLE, 4 PAIR, 24 GAUGE TWISTED BY BERTEK (TERMINATE CABLE WITH RJ45 FEMALE CONNECTORS). RUN 2 LINES FROM EACH POS TO PATCH PANEL. RUN 1 LINE FOR EACH PRINTER TO PATCH PANEL.

POS CONTACT
 MARK KIMBER - RADIANT SYSTEMS, INC
 O: 770-576-6987 C:404-431-5508
 F: 770-754-7760
 MKIMBER@RADIANTSYSTEMS.COM

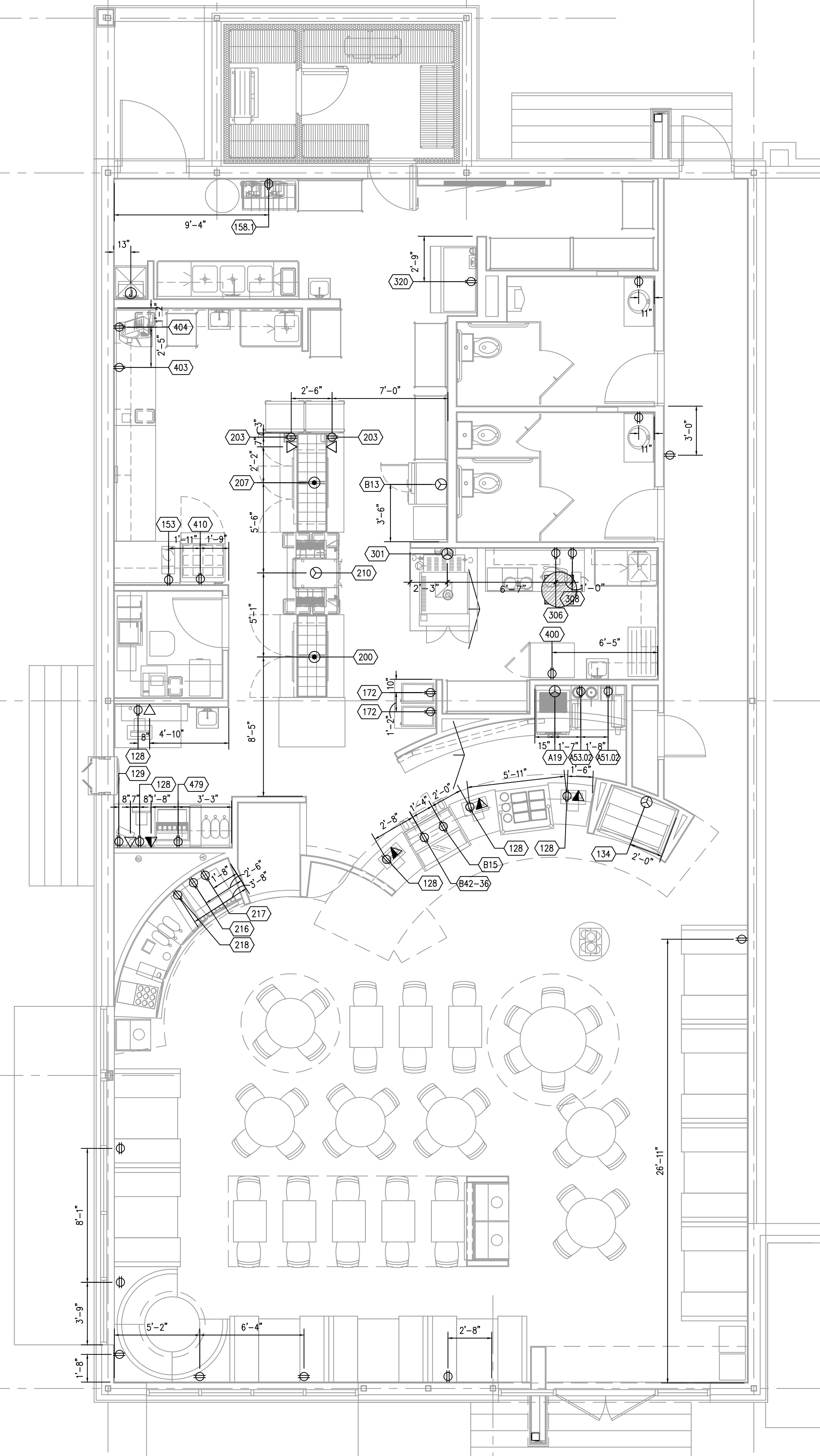
GENERAL NOTES:

1. ALL ELECTRICAL FOR POS EQUIPMENT MUST BE FROM THE SAME PHASE. ALL THREE WIRES- HOT, NEUTRAL, AND GROUND MUST RUN FROM THE ELECTRICAL PANEL TO EACH HUBBLE OUTLET.
2. EACH POS SHOULD HAVE 1-1/2" CONDUIT STUBBED TO ABOVE CEILING TO ACCOMMODATE CAT 5 CABLES.
3. PATCH PANEL AND ALOHA SWITCH SHOULD BE LOCATED WITHIN 36" OF THE OFFICE COMPUTER.
4. EACH POS TO HAVE A RECEIPT PRINTER CONNECTED TO THE POS

POS WIRING DIAGRAM
 NOT TO SCALE **2**



DRIVE-THRU CONDUIT SCHEMATIC
 NOT TO SCALE **3**



POWER ROUGH-IN FLOOR PLAN
 1/4"=1'-0" **1**

ELECTRICAL ROUGH-IN NOTES

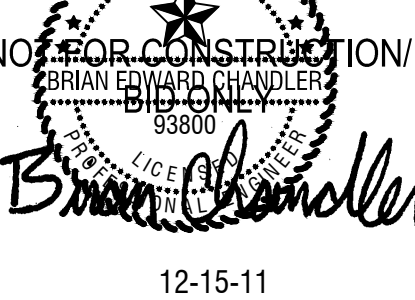
1. ALL ELECTRICAL OUTLETS SHOWN ON THIS PLAN ARE FOR FIXTURES AND EQUIPMENT SPECIFIED AS FURNISHED OWNER UNLESS OTHERWISE NOTED. FOR ADDITIONAL OUTLETS, SEE THE POWER PLAN.
2. ALL DIMENSIONS GIVEN ARE FROM COLUMN CENTERLINE AND/OR FINISHED WALLS.
3. ELECTRICIAN TO BRANCH TO CONNECTION WHERE REQUIRED TO CONNECT ALL ELECTRICAL EQUIPMENT AND FIXTURES AND DO ANY INTERNAL WIRING REQUIRED IN THE FIXTURES INCLUDING INTER-WIRING TO APPLIANCES AS REQUIRED BY THE SPECIFICATIONS AND/OR DRAWINGS.
4. CONTRACTOR TO PROVIDE AND INSTALL GALVANIZED JUNCTION BOXES IN FIXTURE CUTOUTS AS REQUIRED BY THE ITEM SPECIFICATION AND INCLUDE APPROPRIATE ELECTRICAL RECEPTACLE, WITH S/S FACEPLATE.
5. ELECTRICIAN TO CONNECT ALL ELECTRICAL EQUIPMENT AND FIXTURES AND DO ANY INTERNAL WIRING REQUIRED IN THE FIXTURES AS REQUIRED BY THE SPECIFICATIONS. ALL ELECTRICAL OUTLET COVER PLATES ARE TO BE STAINLESS STEEL AND ARE TO BE FURNISHED BY THE ELECTRICIAN, AS WELL AS THE RECEPTACLE, UNLESS OTHERWISE SPECIFIED IN THE ITEM SPECIFICATIONS. ALL DISCONNECT SWITCHES ARE TO BE FURNISHED AND INSTALLED BY THE ELECTRICIAN AT TIME OF INSTALLATION.
6. ALL OUTLETS WITHIN KITCHEN AREA AND PREP AREA SHALL BE GFI PER NEC.
7. ELECTRICAL CONTRACTOR TO PROVIDE CONTROL WIRING AND ELECTRICAL SERVICE FOR REMOTE REFRIGERATION SYSTEMS FOR WALK-IN BOXES, AND INSTALL ALL LIGHTS IN WALK-IN COOLER AS REQUIRED THRU DOOR SWITCH.



ID STUDIO 4, LLC
 1431 GREENWAY DR. SUITE 150
 IRVING, TEXAS 75038
 TEL: 972.870.1288
 WWW.IDSTUDIO4.COM

CLIENT:
FOCUS Brands
 301 S. CONGRESS AVE., STE 11000
 AUSTIN, TX 78701
 512.236.3600
 www.focusbrands.com

TBPE FIRM REGISTRATION# F-11678



NOT FOR CONSTRUCTION!
 BRIAN EDWARD CHANDLER
 LICENSE NO. 83800
 STATE OF TEXAS
 12-15-11

SCHLOTZSKY'S DELI
THE TRAILS AT 620
 8300 N. FM 620 STE 103
 AUSTIN, TX. 78726
 CLIENT: FOCUS Brands
 301 S. CONGRESS AVE. STE 11000
 AUSTIN, TX 78701



DATE	DESCRIPTION
11.21.11	ISSUE FOR PERMIT
12.16.11	ISSUE FOR BID

DATE	DESCRIPTION

SHEET TITLE:
POWER ROUGH-IN FLOOR PLAN

SHEET NUMBER:

E1.2

PROJECT NUMBER:
FOC11003

NOT USED
 NOT TO SCALE **6**