

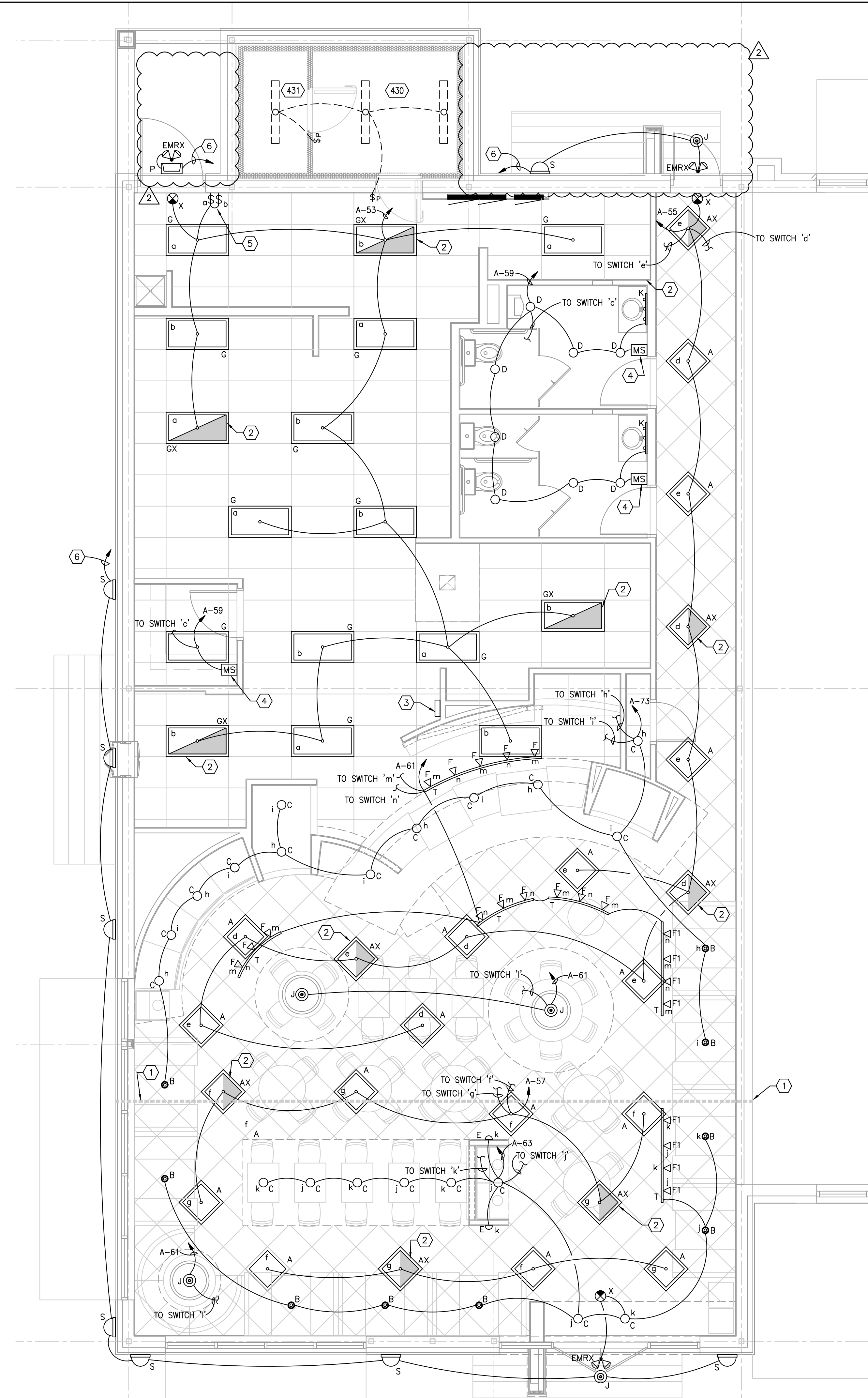
NOTE:
 PROVIDE THE REQUIRED NUMBER OF SWITCHBOXES FOR A NEAT,
 UNIFORMLY SPACED INSTALLATION AS SHOWN. PROVIDE NOMENCLATURE
 SPECIFYING WHICH LUMINAIRES ARE CONTROLLED BY WHICH CONTROLLER.
 VERIFY NOMENCLATURE WITH OWNER AND ARCHITECT. VERIFY COLOR
 SELECTION WITH ARCHITECT. SIZE AS REQUIRED BASED ON HEAT LOAD
 FROM ADJACENT DIMMER AND PER NEC.

SWITCH BANK
 1/4"=1'-0" **2**

LIGHT FIXTURE SCHEDULE

TYPE	DESCRIPTION	LAMP
A	RECESSED INDIRECT 2X2 TROFFER SECURITY LIGHTING: STE22-225TIG-MPO-ETTU-C388-L	(2)T25
AX	RECESSED INDIRECT 2X2 TROFFER WITH BATTERY PACK SECURITY LIGHTING: STE22-225TIG-MPO-ETTU-C388-L	(2)T25
B	SURFACE CEILING PENDANT (GLOBE) SECURITY LIGHTING: SLS-P4401-29	(1) A19 30W
C	RECESSED LV DOWN LIGHT W/ ELECTRONIC TRANSFORMER. VERIFY CEILING TYPE & PROVIDE PROPER HARDWARE. SECURITY LIGHTING: SLS-PB16-TG/PB036-28-L	(1) MR16-20
D	RECESSED VERIFY CEILING TYPE & PROVIDE PROPER HARDWARE SECURITY LIGHTING: CFRB126UEB-ST492A1-B24-LP	(1) 26 QUAD
E	WALL SCONCE: (GREEN GLASS) SECURITY LIGHTING: E20059-04-L	(1) 13W CFL
EMRX	CEILING OR WALL MOUNTED (2) HEADED EXTERIOR REMOTE EMERGENCY LIGHT POWERED & CONNECTED TO "EMR". SECURITY LIGHTING: OMS-DB0605	(2) 5.0W
F	TRACK MOUNTED LIGHT FIXTURE LOW VOLTAGE TRACK HEAD W/ INTEGRAL TRANSFORMER SECURITY LIGHTING: SLS-P6125-09	(1) 50W MR16
F1	TRACK MOUNTED LIGHT FIXTURE LOW VOLTAGE TRACK HEAD W/ INTEGRAL TRANSFORMER SECURITY LIGHTING: AKTSGZ-SMSZ-L	(1) 50W MR16
G	LAY-IN 2X4 FLUORESCENT SECURITY LIGHTING: R243B-LW	(3) F25 T8
GX	LAY-IN 2X4 FLUORESCENT W/ BATTERY PACK SECURITY LIGHTING: R243B-LW	(3) F25 T8
J	SURFACE CEILING PENDANT (GLOBE) SECURITY LIGHTING: SLS-P4406-29	(1) A19 40W
K	WALL MOUNTED ABOVE MIRROR, OPAL MATTIE GLASS & SATIN NICKEL FINISH SECURITY LIGHTING: SLS-P3242-09	(3) 25W MED BASE
P	WALL MOUNTED ABOVE DOOR. SEE EXTERIOR ELEVATIONS. SECURITY LIGHTING: SLS-LCC-70P8-2-LP	(1) 70W MH
S	SURFACE WALL MOUNTED EYELID SCONCE BLACK SECURITY LIGHTING: HVLH-070H8-2	(1) 70W MH
T	SURFACE MOUNTED LENGTHS & PARTS I.B.D. BY CONTRACTOR BASED ON QUOTATION INFORMATION PROVIDED BY NATIONAL ACCOUNT VENDOR. SECURITY LIGHTING: ARCHITRAK AKT-Z	-
X	BATTERY POWERED EXIT SIGN SECURITY LIGHTING: PRB	FURNISHED WITH FIXTURE

NATIONAL ACCOUNT VENDOR:
 SECURITY LIGHTING
 MICHAEL KREINER
 800-544-4848 X314
 MICHAELK@SECURITYLIGHTING.COM



LIGHTING FLOOR PLAN
 1/4"=1'-0" **1**

GENERAL NOTES

- A. ALL WIRING SHALL BE IN CONDUIT, EMT OR RIGID FLEXIBLE CONDUIT MAY ONLY BE USED FOR FINAL CONNECTIONS FROM OUTLET BOXES TO LIGHT FIXTURES, MOTORS, APPLIANCES, ETC. MAXIMUM LENGTH 6 FEET. NO BX, ROMEX, ARMORED CABLE, ETC. ALLOWED.
- B. IT'S THE ELECTRICAL CONTRACTORS RESPONSIBILITY TO BALANCE ALL CIRCUITS BETWEEN THE PHASES OF THE SYSTEM, REGARDLESS OF CIRCUITS INDICATED.
- C. IN PUBLIC AREAS BATTERY PACKS FOR EXIT AND EMERGENCY LIGHTS MUST BE REMOTE OR RECESSED. PAINT EXPOSED SURFACE TO MATCH ADJACENT FINISH.
- D. ALL PENETRATIONS IN FIRE RATED WALL ASSEMBLIES SHALL BE SEALED WITH UL LISTED FIRE STOPPING MATERIAL.
- E. GENERAL CONTRACTOR SHALL LOCATE ALL EXISTING POST-TENSIONING STRANDS IN EITHER DIRECTION PRIOR TO INSTALL OF ANCHORS. IT IS IMPERATIVE THAT NO STRANDS BE DAMAGED BY THE USE OF ANCHORS. PENETRATION OF ANCHORS INTO SLAB SHALL NOT EXCEED 1 1/2".

KEYED NOTES

1. 15' DAY LIGHTING ZONE EASEMENT PER ENERGY CODE.
2. FLUORESCENT LIGHTS TYPE 'AX' AND 'GX' TO BE UNSWITCHED FOR NIGHT LIGHTING AND INSTALLED WITH A BATTERY PACK FOR EMERGENCY BACKUP.
3. SWITCH BANK. LABEL SWITCHES PER AREA SERVED.
4. WATTSTOPPER PW-100 OR EQUAL. WALL MOUNT PASSIVE INFRARED OCCUPANCY SENSOR SWITCH.
5. PROVIDE DUAL LEVEL SWITCHING (ALTERNATE FIXTURES) WITHIN KITCHEN AREA.
6. ROUTE 2#12,#12G IN 3/4". TO EXISTING HOUSE PANEL. LANDLORD TO PROVIDE CONTROLS OF LIGHTING. VERIFY LOCATION OF HOUSE PANEL.

STUDIO
ID STUDIO 4, LLC
 1431 GREENWAY DR. SUITE 150
 IRVING, TEXAS 75038
 TEL: 972.870.1288
 WWW.IDSTUDIO4.COM

CLIENT:
FOCUS Brands
 301 S. CONGRESS AVE., STE 11000
 AUSTIN, TX 78701
 512.236.3600
 www.focusbrands.com

TBPE FIRM REGISTRATION# F-11678
NOT FOR CONSTRUCTION!
 BRIAN EDWARD CHANDLER
 LICENSED ELECTRICAL ENGINEER
 83800
 Brian Chandler
 12-15-11

SCHLOTZSKY'S DELI
THE TRAILS AT 620
 8300 N. FM 620 STE 103
 AUSTIN, TX. 78726
 CLIENT: FOCUS Brands
 301 S. CONGRESS AVE. STE 11000
 AUSTIN, TX 78701

EVERY BITE
Schlottzsky's
 LOTZ BETTER

DATE	DESCRIPTION
11.21.11	ISSUE FOR PERMIT
12.16.11	ISSUE FOR BID

DATE	DESCRIPTION
2 12.15.11	BUILDING CHANGES

SHEET TITLE:
LIGHTING FLOOR PLAN

SHEET NUMBER:
E1.0

PROJECT NUMBER:
FOC11003