

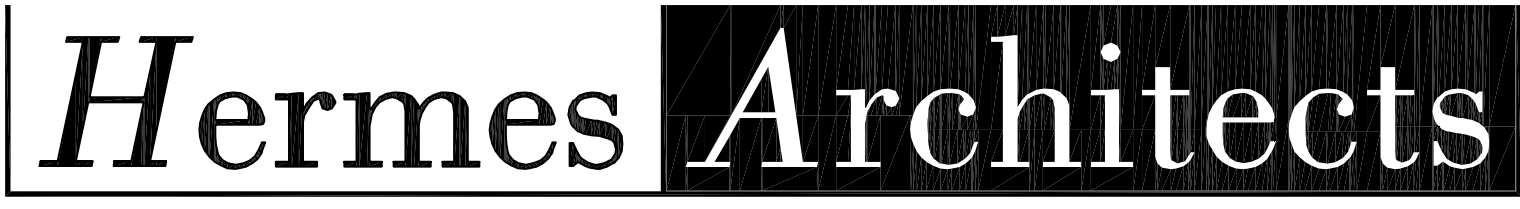
ELECTRICAL KEY NOTES:

- ① PROVIDE REMOTE EMERGENCY BATTERY PACK INDOORS ABOVE AN ACCESSIBLE CEILING.

ELECTRICAL GENERAL NOTES:

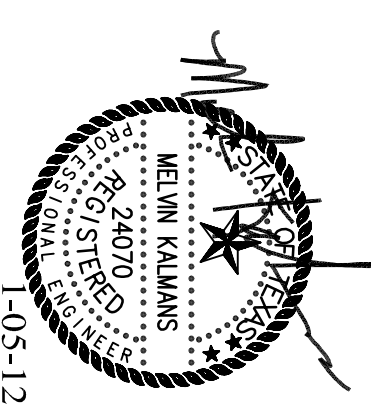
- 1. SUBSTITUTIONS FOR THE SCHEDULED LIGHT FIXTURES WILL NOT BE PERMITTED. REFER TO SHEET ESO1 FOR DETAILS.

CITY COMMENTS 12.02.2011
CITY COMMENTS 01.05.2012



Members A.I.A.
1177 West Loop South, Ste. 500
Houston, Texas 77027
Tel. 713-785-3644
www.hermesarchitects.com
Houston • Dallas • Ft. Worth

This document is an instrument of service protected by the copyright law of the United States of America, 17 U.S.C. § 102, and shall not be copied or reproduced without the express written consent of Hermes Architects, Inc.

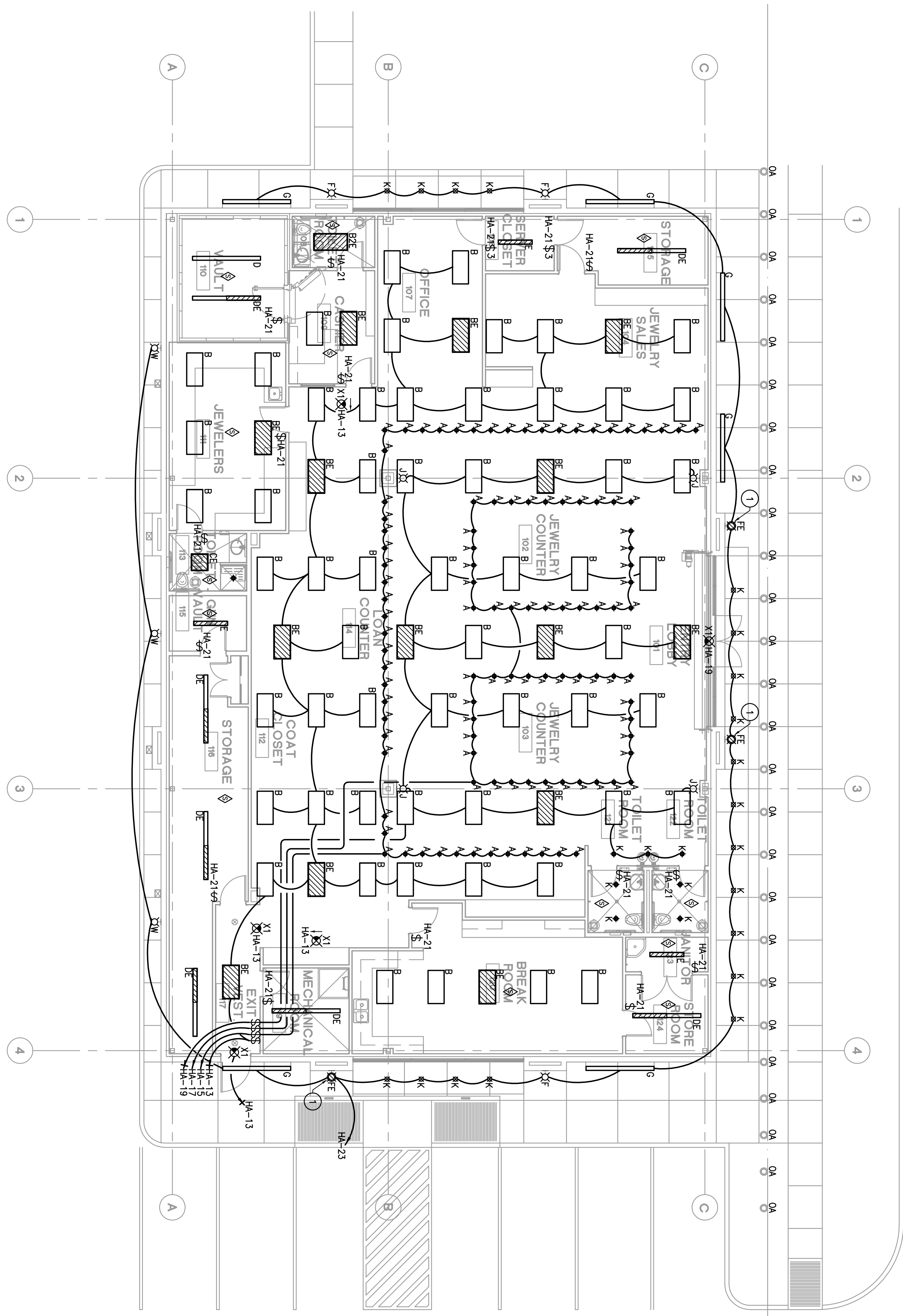


Shaw's Jewelers
West Gray
1021 West Gray Ave.
Houston, Texas

Shaw's Jewelers
1014 West Gray Street
Houston, Texas 77019

DATE 08.31.2011
PROJECT NO. 1102100
DRAWN BY DES
CHECKED BY MR

ELECTRICAL LIGHTING FLOOR PLAN



ELECTRICAL LIGHTING FLOOR PLAN
SCALE: 1/8" = 1'-0"

