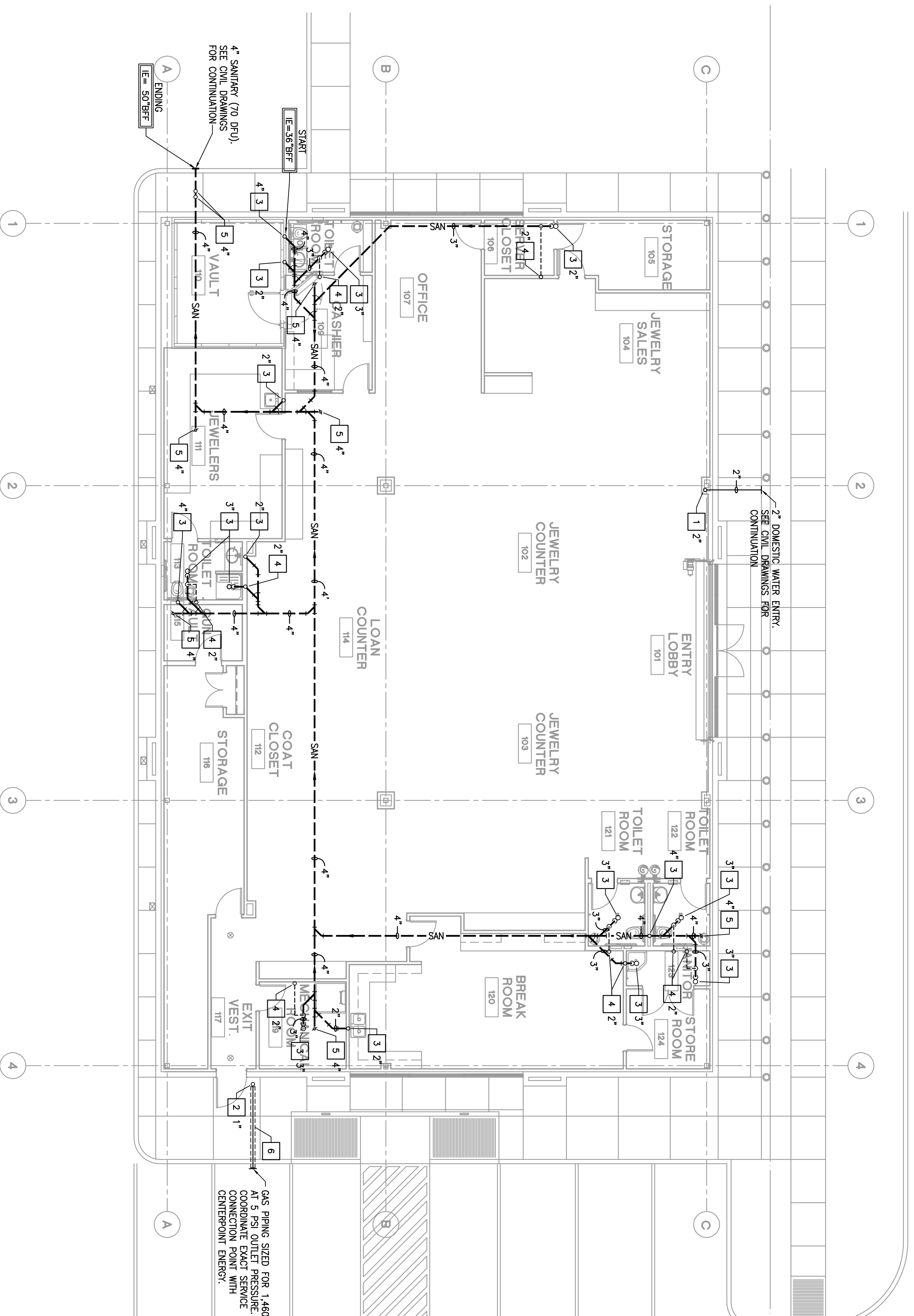


GENERAL NOTES

1. THE BUILDING IS TO BE FULLY FIRE SPRINKLERED IN COMPLIANCE WITH NFPA 13, STATE BOARD OF INSURANCE REQUIREMENTS, AND ALL LOCAL CODES.
2. REFER TO CIVIL DRAWINGS FOR CONTINUATION OF DOMESTIC UTILITIES.
3. REFER TO THE SPRINKLER, STORM AND SANITARY WASTE INVERT ELEVATIONS LISTED ARE APPROXIMATE. PRIOR TO CONSTRUCTION, COORDINATE FINAL INVERT ELEVATIONS OF BUILDING SANITARY AND STORM OUTLETS WITH SITE UTILITY ENGINEER AND PROVIDE AS NOTED TO ENSURE PROPER CONNECTIONS TO SITE UTILITIES.
4. PROVIDE 6" SCHEDULE 40 PVC PIPE SLEEVE FOR ALL GAS PIPING ROUTED UNDER CONCRETE OR ASPHALT (TYPICAL).
5. CONTRACTOR TO COORDINATE THE INSTALLATION OF SITE GAS PIPES WITH NEARBY UTILITY SERVICE PROVIDER FROM TO ANY SITE PAVING/CONCRETE WORK.
6. REFER TO LATEST CIVIL DRAWINGS FOR BUILDING FINISHED FLOOR ELEVATION.
7. ALL BUILDING STORM SINKS IS BASED UPON THE 2003 INTERNATIONAL PLUMBING CODE, USING A RAINFALL RATE OF 4.5" PER HOUR.
8. CONTRACTOR SHALL ROUTE & TRAP PRIMER LINES TO SERVE ALL FLOOR DRAINS, FLOOR SINKS AND HUB DRAINS. RE: SHEET PLANT FOR LOCATION OF TRAP PRIMERS. TRAP PRIMER LINES ARE NOT SHOWN FOR CLAMM.
9. ALL PIPE UNDERSLAB FROM TRAP PRIMERS SHALL BE TYPE "M" COPPER W/ NO JOINTS.

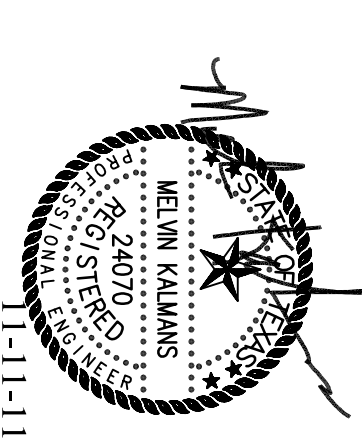
KEYED NOTES

- 1 COLD WATER PIPE UP.
- 2 GAS PIPE UP.
- 3 SANITARY WASTE UP.
- 4 VENT PIPE UP.
- 5 SANITARY WASTE UP TO CLEANOUT.
- 6 PROVIDE 4" PVC SLEEVE FOR GAS BELOW PAVEMENT. (TYPICAL)



PLUMBING UNDERFLOOR PLAN
 SCALE: 1/8" = 1'-0"

This document is an instrument of service protected by the copyright law of the United States of America, 17 U.S.C. § 102, and shall not be copied or reproduced without the express written consent of Hermes Architects, Inc.



Shaw's Jewelers
 West Gray
 1021 West Gray Ave.
 Houston, Texas

Shaw's Jewelers
 1014 West Gray Street
 Houston, Texas 77019

DATE: 08.31.2011
 PROJECT NO.: 1102100
 DRAWN BY: VU
 CHECKED BY: KBG

PLUMBING UNDERFLOOR PLAN

P1.01

