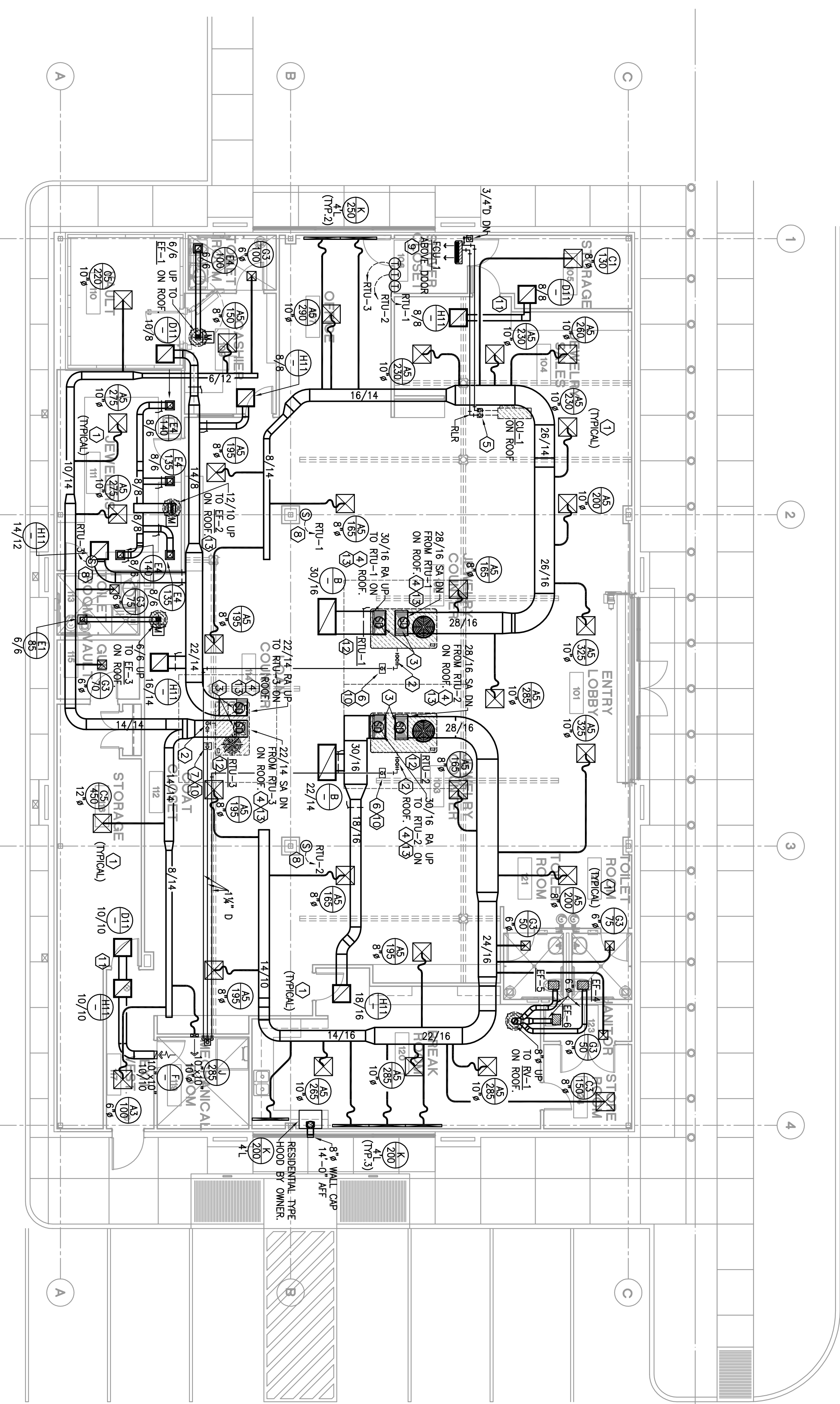


MECHANICAL KEYED NOTES

- ① RE: 1/2/3/4/2.1 FOR DETAIL OF FLEX DUCT TYPE AND CONNECTION TO AIR DEVICE. TYPICAL FOR EACH AIR DEVICE.
- ② REFER TO DETAILS 6/M2.1 FOR CONDENSATE PIPING. (TYPICAL).
- ③ DUCT HOUNDED SMOKE DETECTOR SPECIFIED AND INSTALLED BY ELECTRICAL CONTRACTOR. MECHANICAL CONTRACTOR TO COORDINATE LOCATIONS AND QUANTITIES. PROVIDE A DUCT DETECTOR IN EACH UNIT SUPPLY AND RETURN AIR DUCTWORK.
- ④ TRANSITION FROM EQUIPMENT OPENING TO DUCTWORK (SIZE AS SHOWN) IN VERTICAL. PROVIDE A CANWASS CONNECTION AT THE UNIT CONNECTION. (TYPICAL ALL EQUIPMENT).
- ⑤ REFRIGERANT LINES RE: 12/M2.1. REFER TO MANUFACTURER FOR PIPE SIZE. RE: 7/M2.1 FOR PIPE THROUGH ROOF.
- ⑥ ROUTE 1-1/4" TYPE 1" COPPER CONDENSATE DRAIN IN PLENUM DOWN WALL TO FLOOR SINK. SECURE DRAIN TO WALL AND FLOOR.
- ⑦ ROUTE 1" TYPE 1" COPPER CONDENSATE DRAIN IN PLENUM DOWN WALL TO FLOOR SINK. SECURE DRAIN TO WALL AND FLOOR.
- ⑧ CONTRACTOR TO COORDINATE LOCATION OF TEMPERATURE SENSOR WITH ARCHITECT.
- ⑨ FOU TO BE WALL MOUNTED UNIT. COORDINATE MOUNTING HEIGHT TO ALLOW FOR 1/8" PER FOOT CONDENSATE DRAINAGE FLOW. COORDINATE WITH ALL DISCIPLINES.
- ⑩ REFER TO 7/M2.1 FOR INSULATE PIPE THRU ROOF DETAIL.
- ⑪ PROVIDE AN ABOVE-CEILING QUANTIZED RETURN AIR TRANSFER DUCT. SEE AS INDICATED.
- ⑫ LOCATE ROOFTOP UNIT SO AS TO PROVIDE MANUFACTURER AND CODE-REQUIRED CLEARANCES.
- ⑬ PROVIDE BIRCHPLA BARS ON ROOF PENETRATIONS. RE: ARCHITECTURAL FOR DETAILS.



MECHANICAL FLOOR PLAN

 SCALE: 1/8" = 1'-0"

Hermes Architects

Members A.I.A.
1177 West Loop South, Ste. 500
Houston, Texas 77027
Tel. 713-785-3644
www.hermesarchitects.com
Houston · Dallas / Ft. Worth

This document is an instrument of service protected by the copyright law of the United States of America, 17 U.S.C. § 102, and shall not be copied or reproduced without the express consent of Hermes Architects, Inc.

Shaw's Jewelers West Gray 1021 West Gray Ave. Houston, Texas	
Shaw's Jewelers 1014 West Gray Street Houston, Texas 77019	
DATE PROJECT NO. DRAWN BY CHECKED BY	08.31.2011 1102100 -- --

MECHANICAL FLOOR PLAN

M1.01

KAE PROJECT # 030013

AKME
KALAMITZ ARCHITECTURAL ENGINEERING INC.
10505 Katy Road, Suite 1500, Houston, Texas 77058
Tel: 281-250-5500
www.akmeinc.com