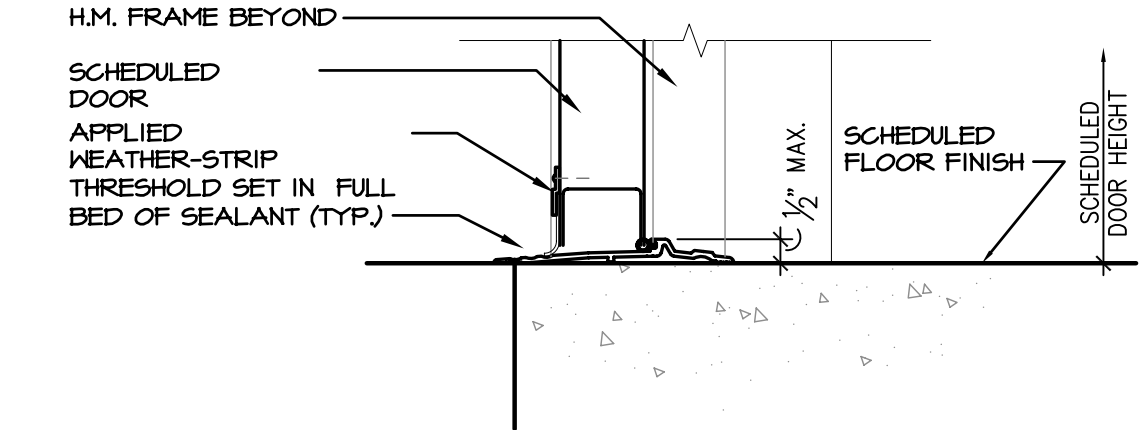
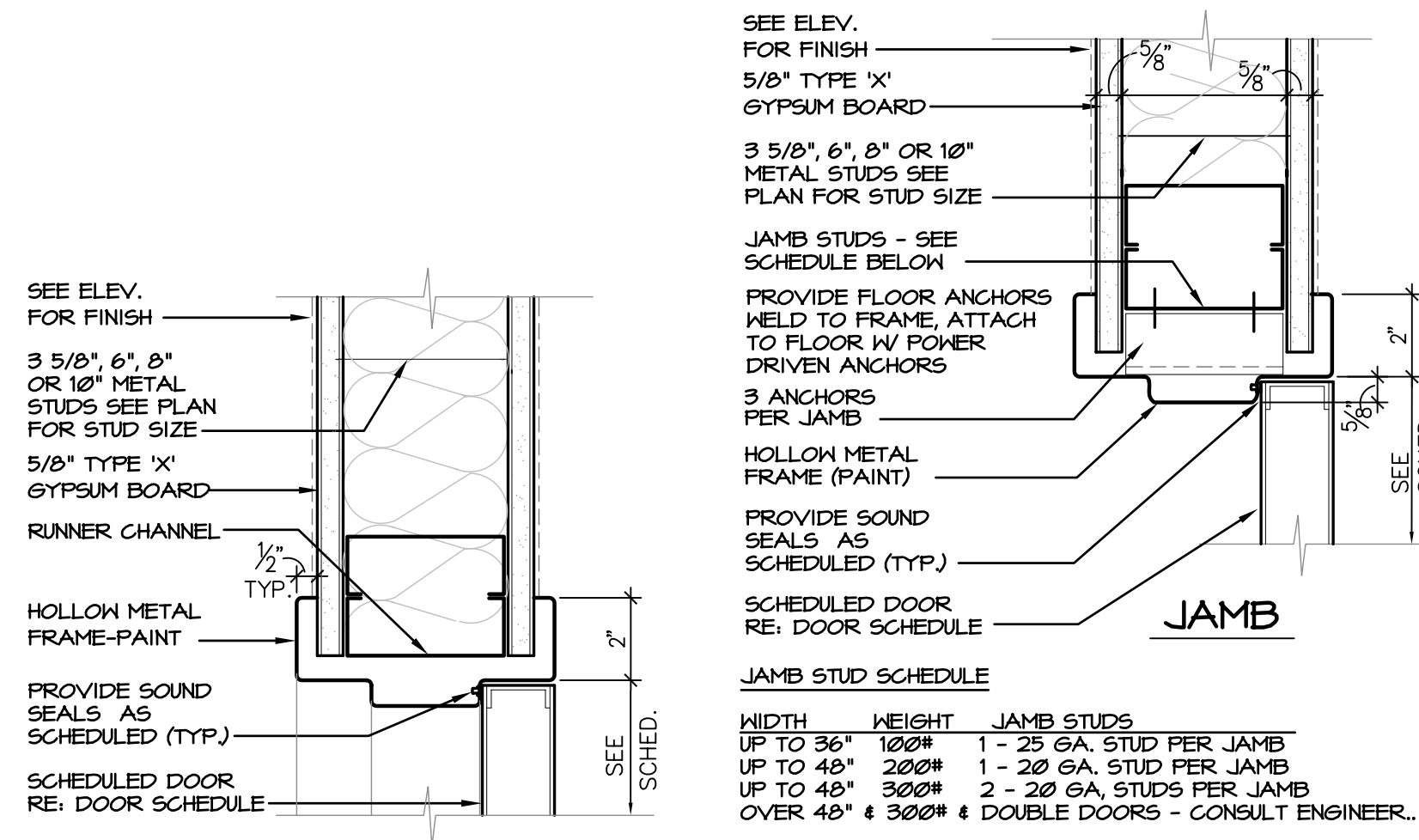


DOOR SCHEDULE

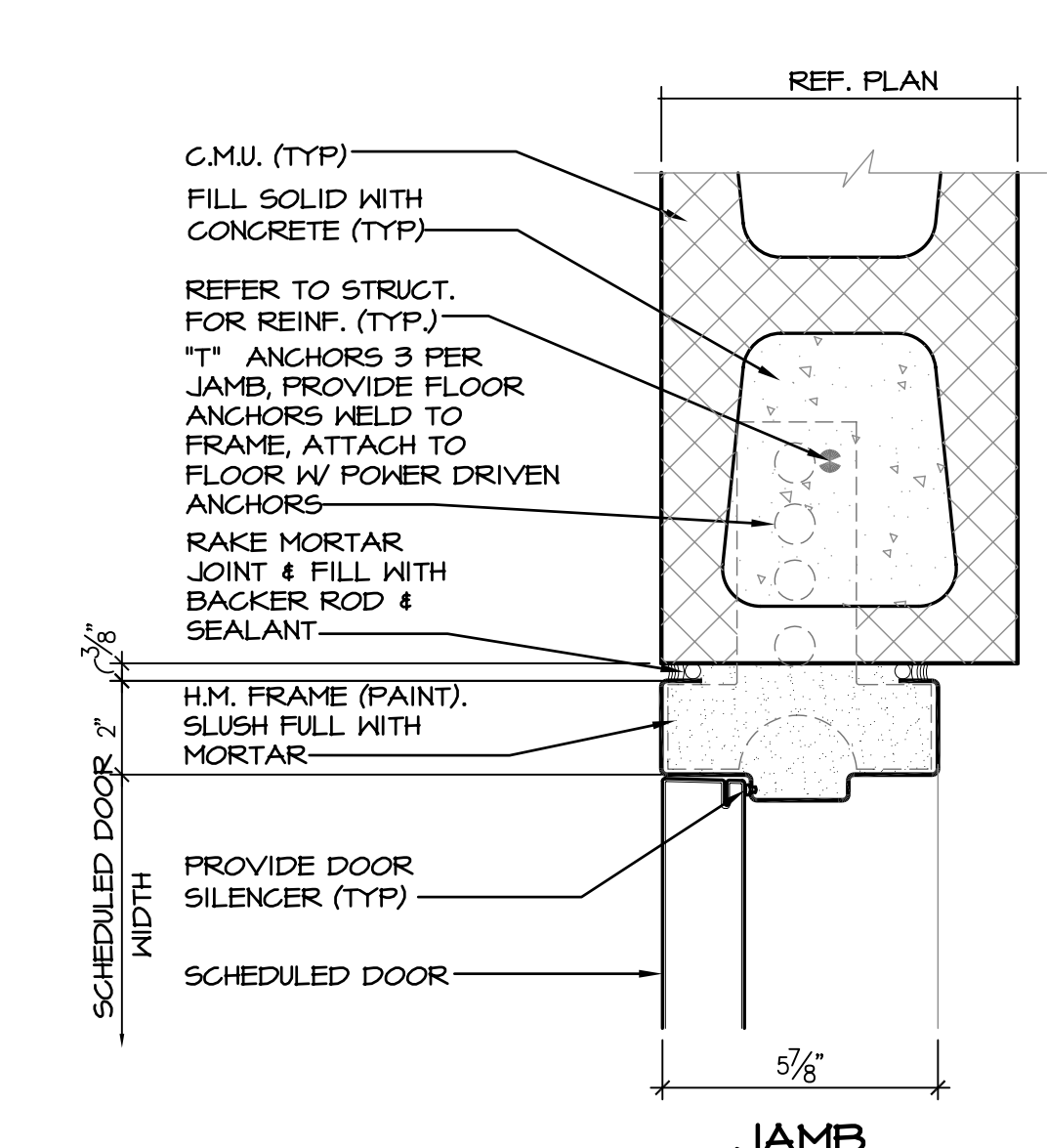
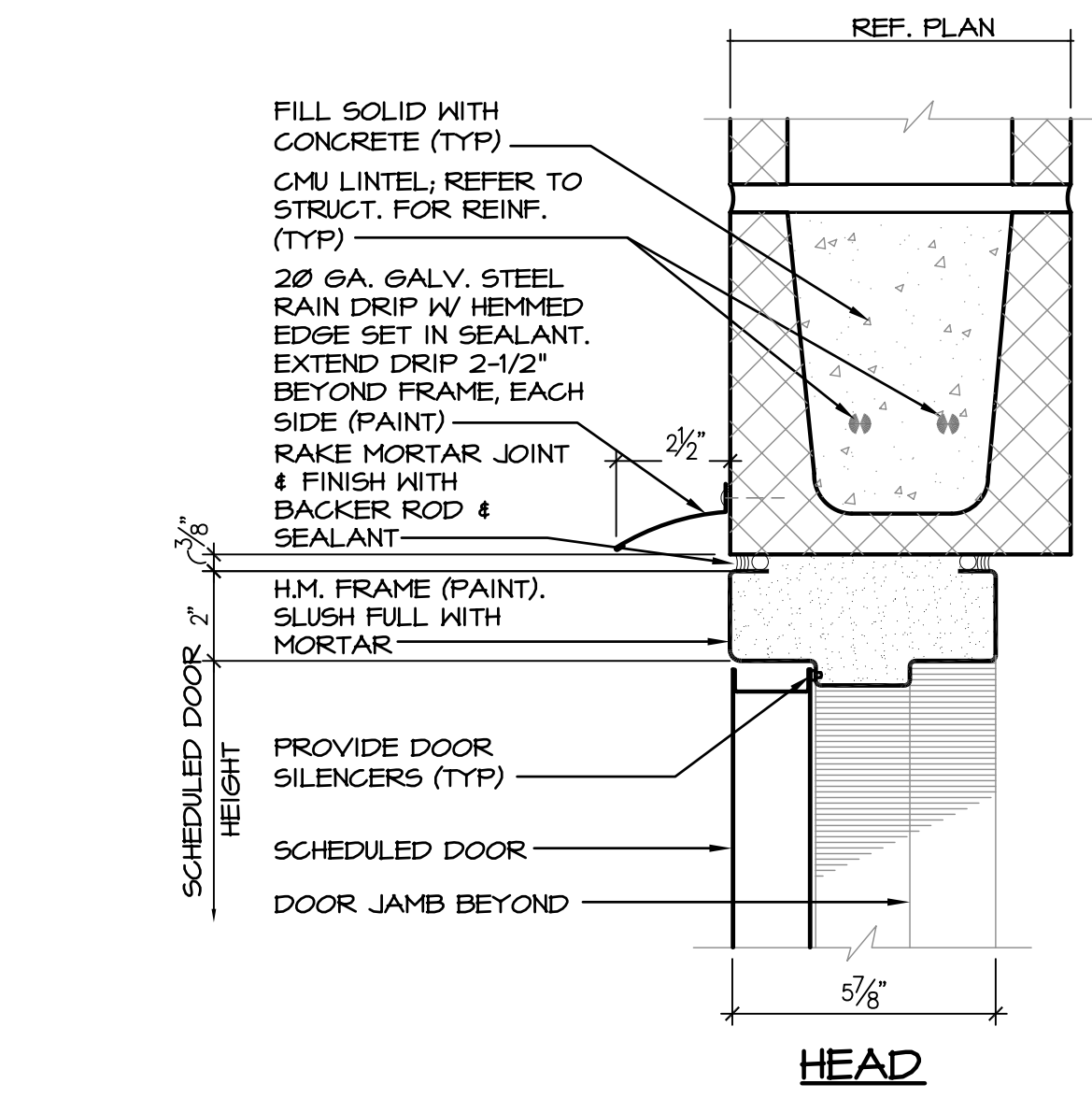
NO.	SIZE	MATERIAL & TYPE	THK.	DOOR			FRAME			DETAILS			REMARKS	ID		
				LOCATION	TO	ELEV.	FINISH	LABEL	MAT.	FINISH	LABEL	HEAD			JAMB	SILL
1	PR 3'-0"x7'-0"	ALUMN.	1-3/4"	ENTRY LOBBY	EXTERIOR	A	PREFIN.	ALUMN.	PREFIN.	6/A4.3	8/A4.3	X/AXXX	01	MAG LOCK ON FRONT DOOR		
10	PR 2'-0"x7'-0"	PLASTIC LAM.	1-3/4"	LOAN COUNTER	COAT CLOSET	D	PREFIN.	H.M.	PAINT.	2/A7.1	3/A7.1	----	14			
12	3'-0"x7'-0"	H.M.	1-3/4"	EXIT VEST.	STORAGE	C	PAINT.	H.M.	PAINT.	2/A7.1	3/A7.1	----	06			
13	3'-0"x7'-0"	H.M.	1-3/4"	EXIT VEST.	STORAGE	C	PAINT.	H.M.	PAINT.	2/A7.1	3/A7.1	----	06			
14	3'-0"x7'-0"	H.M.	1-3/4"	EXIT VEST.	MECHANICAL	C	PAINT.	20 MIN.	H.M.	PAINT.	20 MIN.	2/A7.1	3/A7.1	----	08	
15	3'-0"x7'-0"	PLASTIC LAM.	1-3/4"	JEWELRY SALES	BREAK ROOM	F	PREFIN.	ALUMN.	PREFIN.	6/A7.3	7/A7.3	----	10			
16	3'-0"x7'-0"	PLASTIC LAM.	1-3/4"	ENTRY LOBBY	TOILET ROOM	B	PREFIN.	ALUMN.	PREFIN.	6/A7.3	7/A7.3	----	13			
17	3'-0"x7'-0"	PLASTIC LAM.	1-3/4"	ENTRY LOBBY	TOILET ROOM	B	PREFIN.	ALUMN.	PREFIN.	6/A7.3	7/A7.3	----	13			
18	PR 3'-0"x7'-0"	PLASTIC LAM.	1-3/4"	STORAGE	JANITOR	D	PREFIN.	H.M.	PAINT.	2/A7.1	3/A7.1	----	09			
19	3'-0"x7'-0"	H.M.	1-3/4"	BREAK ROOM	STORE ROOM	C	PAINT.	H.M.	PAINT.	2/A7.1	3/A7.1	----	16			
2	3'-0"x7'-0"	H.M.	1-3/4"	JEWELRY SALES	STORAGE	C	PAINT.	ALUMN.	PREFIN.	6/A7.3	7/A7.3	----	03			
20	3'-6"x7'-0"	H.M.	1-3/4"	EXIT	EXTERIOR	C	PAINT.	H.M.	PAINT.	5/A7.1	6/A7.1	4/A7.1	02			
21	20'-0"x16'-0"	STEEL	1-3/4"	ENTRY LOBBY	EXTERIOR	G	PAINT.	STEEL	PAINT.	2/A7.1	3/A7.1	----	06	HURRICANE RESISTANT OVERHEAD STEEL COILING DOOR		
3	3'-0"x7'-0"	H.M.	1-3/4"	STORAGE	SERVER CLOSET	C	PAINT.	H.M.	PAINT.	2/A7.1	3/A7.1	----	07			
4	3'-0"x7'-0"	H.M.	1-3/4"	OFFICE	SERVER CLOSET	C	PAINT.	H.M.	PAINT.	2/A7.1	3/A7.1	----	07			
5	3'-0"x7'-0"	PLASTIC LAM.	1-3/4"	CASHIER	TOILET ROOM	B	PREFIN.	H.M.	PAINT.	2/A7.1	3/A7.1	----	11			
6	3'-0"x7'-0"	H.M.	1-3/4"	JEWELRY SALES	CASHIER	F	PAINT.	H.M.	PAINT.	13/A7.3	14/A7.3	----	04	BULLET RESISTANT DOOR		
7	3'-0"x7'-0"	H.M.	1-3/4"	GUN VAULT	STORAGE	C	PAINT.	H.M.	PAINT.	13/A7.3	14/A7.3	----	04	BULLET RESISTANT DOOR		
8	3'-0"x7'-0"	H.M.	1-3/4"	LOAN COUNTER	JEWELER'S	E	PAINT.	ALUMN.	PREFIN.	6/A7.3	7/A7.3	----	05			
9	3'-0"x7'-0"	PLASTIC LAM.	1-3/4"	JEWELER'S	TOILET ROOM	B	PREFIN.	H.M.	PAINT.	2/A7.1	3/A7.1	----	12			



2
A7.1 SCALE: 3" = 1'-0"

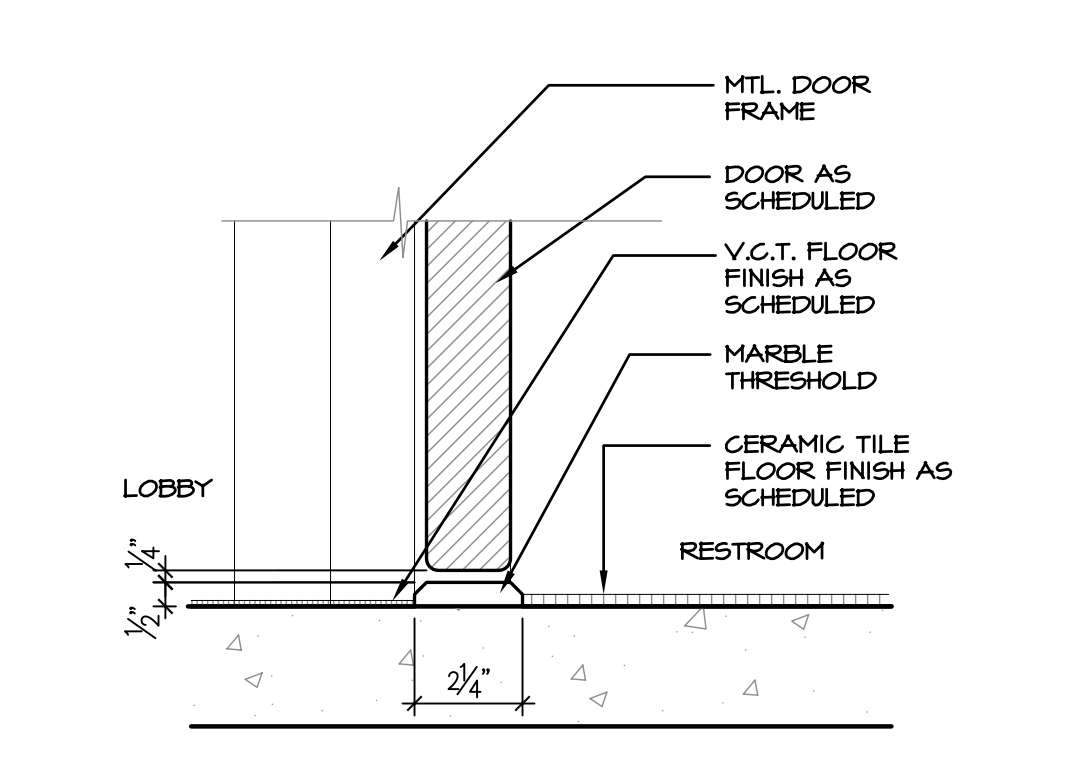
3
A7.1 SCALE: 3" = 1'-0"

4
A7.1 SCALE: 3" = 1'-0"

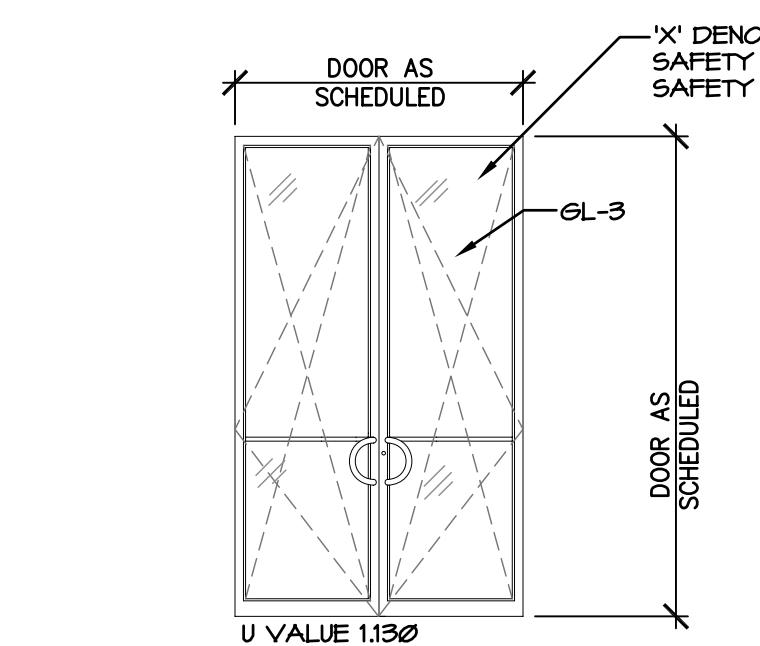


5
A7.1 SCALE: 3" = 1'-0"

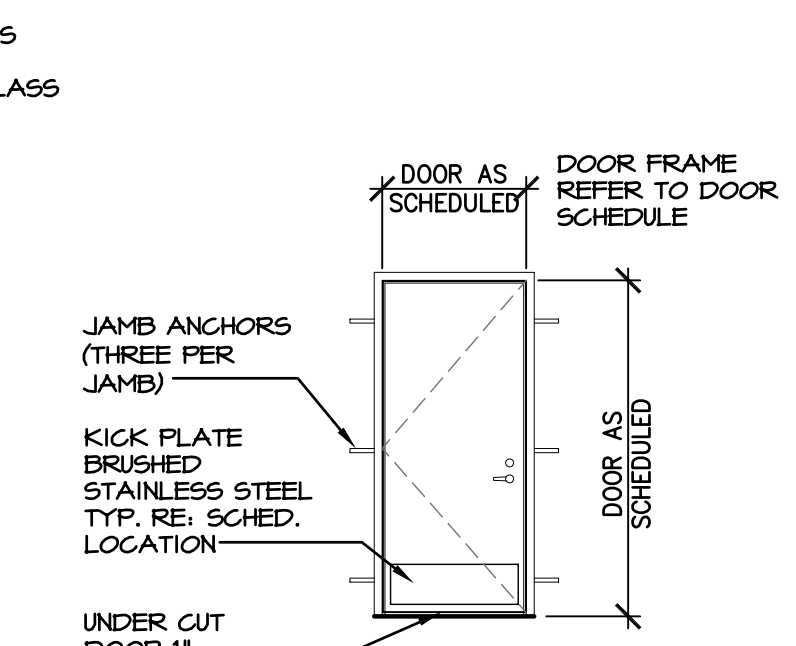
6
A7.1 SCALE: 3" = 1'-0"



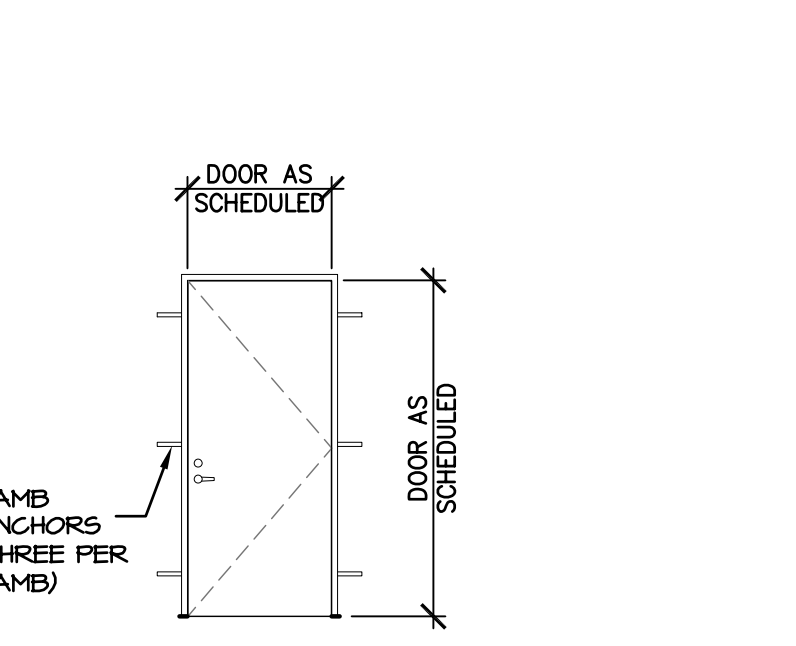
7
A7.1 SCALE: 3" = 1'-0"



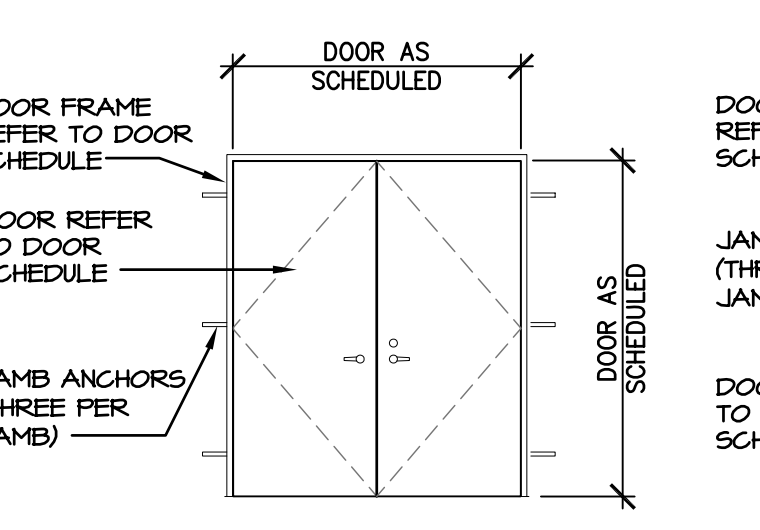
DOOR TYPE A
CLEAR ANODIZED ALUMINUM DOOR. ALL GLASS IN DOORS AND SIDELITES SHALL BE TEMPERED SAFETY GLASS. RE: SECTION



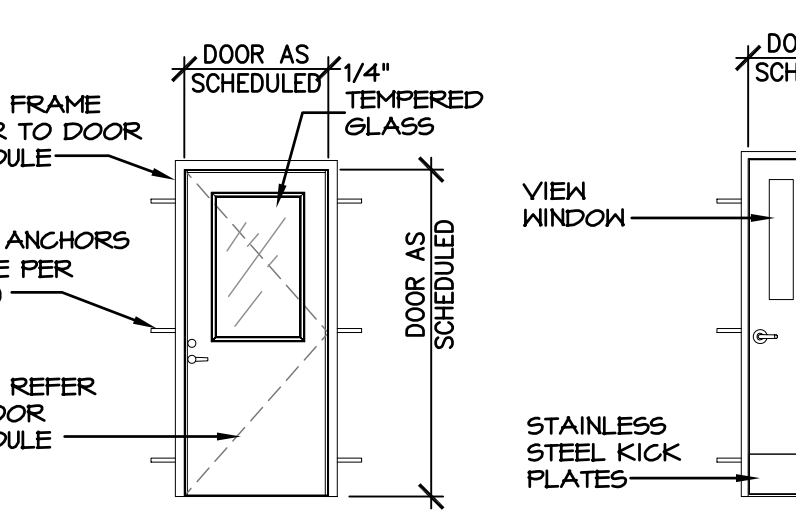
DOOR TYPE B



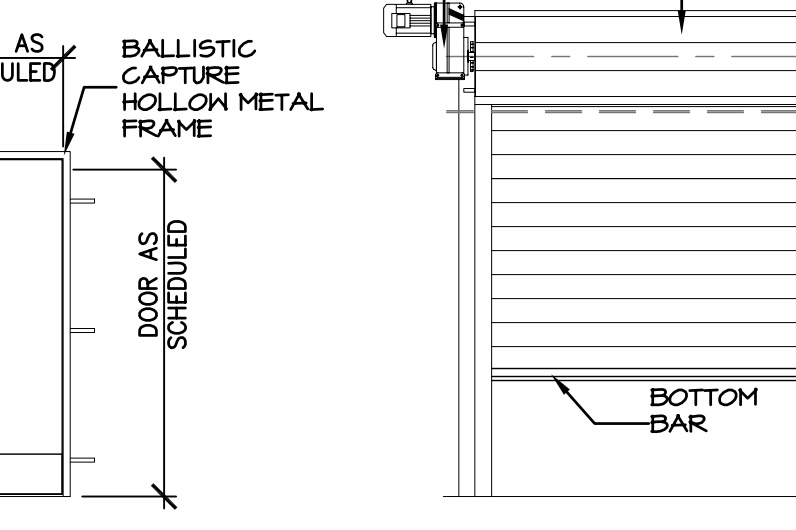
DOOR TYPE C



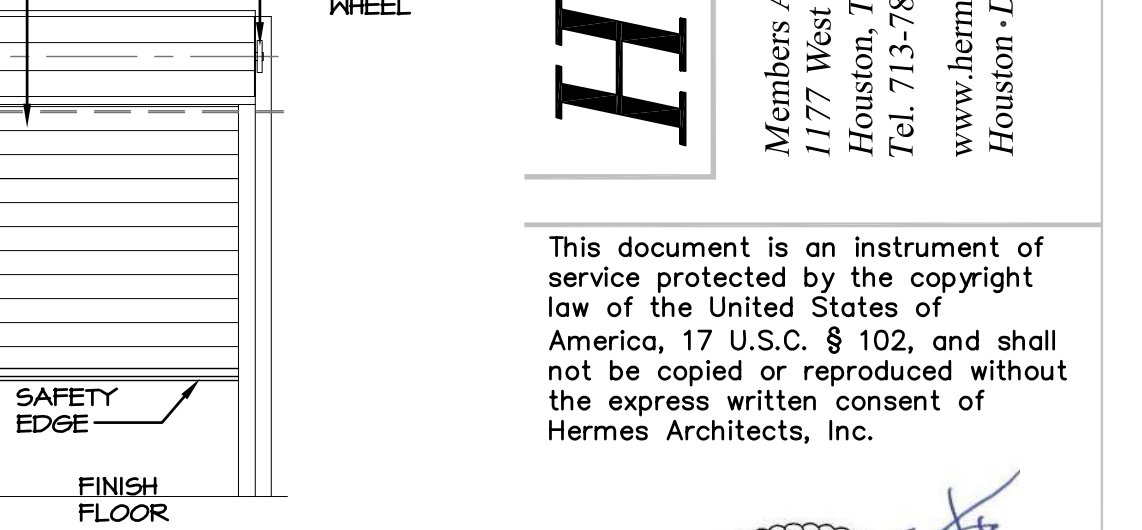
DOOR TYPE D



DOOR TYPE E



DOOR TYPE F
DOOR LINED W/BULLET RESISTANT FIBERGLASS



DOOR TYPE G

<p>HW SET: 01 DOOR NUMBER: 01</p> <p>EACH TO HAVE:</p> <ul style="list-style-type: none"> 2 SET PIVOT SET 7215 2 EA PIVOT 7215 INT 1 EA MANUAL FLUSH BOLT 18458 1 EA DUST PROOF STRIKE DP1/DP2 AS REQ'D 1 EA DEADLOCK MS1850S - ADVISE BACKSET 1 EA ELECTROMAGNETIC LOCK M492 3 EA MORITSE CYLINDER 20-061-ICX 3 EA PRIMUS CORE ONLY 20-740-XP 1 EA EXIT INDICATOR 4089 2 EA PUSH BAR 9100 2 EA PULL 15580-01-001-L400 1 SET MEETING STILES BY DOOR MANUFACTURER 2 EA CONCEALED CLOSER 2030 X ST-2211 2 EA OVERHEAD STOP 900S 1 EA THRESHOLD 198NA 1 EA DOOR SWEEP 513 1 EA POWER SUPPLY P5904 X 900-FA X 900-BB 1 EA PUSHBUTTON 63RD EX 1 EA KEYSWITCH 653-04 2 EA BUTTON MINI BOX 660-PB 1 EA SCANNER SCAN II-W <p>NOTE: KEYSWITCH TO DISABLE MAG LOCK TO ALLOW ENTRY AFTER HOURS. THE 660-PB TO BE LOCATED AS DIRECTED BY OWNER AND/OR ARCHITECT.</p>	<p>HW SET: 03 DOOR NUMBER: 19</p> <p>EACH TO HAVE:</p> <ul style="list-style-type: none"> 626 IVE 3 EA HINGE 626 IVE 1 EA CLASSROOM LOCK 626 IVE 3 EA WALL/FLOOR STOP 628 SCH 3 EA SILENCER 626 SCH 20-061-ICX 626 SCH 20-740-XP 628 ADA 4089 630 ELM 9100 630 ELM 15580-01-001-L400 689 LCN 1 EA CONTINUOUS HINGE 626 GLY 1 EA ELECTRONIC LOCK 626 GLY 1 EA PRIMUS CORE ONLY CL NGP 1 EA CONSTRUCTION CORE AL NGP 1 EA SURFACE CLOSER 630 SCE 1 EA KICK PLATE 630 SCE 1 EA FLOOR STOP 630 SCE 3 EA SILENCER WHT SCE 	<p>HW SET: 07 DOOR NUMBER: 03 04</p> <p>EACH TO HAVE:</p> <ul style="list-style-type: none"> 652 IVE 3 EA HINGE 626 SCH 1 EA STOREROOM LOCK 626 IVE 1 EA WALL/FLOOR STOP 626 IVE 3 EA SILENCER 652 IVE 3 EA HINGE 626 SCH 1 EA STOREROOM LOCK 626 SCH 1 EA SURFACE CLOSER 626 IVE 1 EA WALL/FLOOR STOP 689 LCN 1 SET SEALS 630 IVE 1 EA DOOR BOTTOM 626 IVE 1 EA THRESHOLD 652 IVE 6 EA HINGE 626 SCH 2 EA MANUAL FLUSH BOLT 630 GLY 1 EA DUST PROOF STRIKE 626 IVE 1 EA STOREROOM LOCK 626 IVE 2 EA WALL/FLOOR STOP 626 IVE 2 EA SILENCER 	<p>HW SET: 11 DOOR NUMBER: 05</p> <p>EACH TO HAVE:</p> <ul style="list-style-type: none"> 652 IVE 3 EA HINGE 626 SCH 1 EA PRIVACY SET 626 IVE 1 EA WALL/FLOOR STOP 626 IVE 3 EA SILENCER 652 IVE 3 EA HINGE 626 SCH 1 EA STOREROOM LOCK 626 IVE 1 EA SURFACE CLOSER 626 IVE 1 EA WALL/FLOOR STOP 689 LCN 1 SET SEALS 630 IVE 1 EA DOOR BOTTOM 626 IVE 1 EA THRESHOLD 652 IVE 3 EA HINGE 626 SCH 1 EA PRIVACY SET 626 IVE 1 EA WALL/FLOOR STOP 626 IVE 3 EA SILENCER 	<p>HW SET: 16 DOOR NUMBER: 21</p> <p>EACH TO HAVE:</p> <ul style="list-style-type: none"> 626 SCH 1 EA RIM CYLINDER 626 IVE 1 EA PRIMUS CORE ONLY 626 SCH 20-057-ICX/20-061-ICX AS REQ'D 626 SCH 20-740-XP 626 SCH BALANCE OF HARDWARE BY OH DOOR SUPPLIER 626 SCH E/O <p>NOTE: COORDINATE CYLINDER REQUIREMENTS WITH DOOR SUPPLIER. NOTE: INSTALL DOOR VIEWER AS FOLLOWS: 1 @ 48" AFF; 1 @ 60" AFF.</p>
<p>HW SET: 02 DOOR NUMBER: 20</p> <p>EACH TO HAVE:</p> <ul style="list-style-type: none"> 1 EA CONTINUOUS HINGE 112HD/224HD AS REQ'D 1 EA EXIT ALARM 260-2300T X 050140 2 EA RIM CYLINDER 20-057-ICX 2 EA PRIMUS CORE ONLY 20-740-XP 1 EA SURFACE CLOSER 4040XP SCUSH 1 SET SEALS 5050B 1 EA DOOR SWEEP 101VA 1 EA DRAIN CAP 16A 1 EA THRESHOLD 896V 	<p>HW SET: 05 DOOR NUMBER: 08</p> <p>EACH TO HAVE:</p> <ul style="list-style-type: none"> 628 IVE 3 EA HINGE 626 SCH 1 EA OFFICE LOCK 626 IVE 1 EA OVERHEAD STOP 628 IVE 3 EA SILENCER 628 IVE 20-061-ICX 626 SCH 20-057-ICX 626 SCH 20-740-XP 689 LCN 4040XP SCUSH BRN NGP 5050B CL NGP 101VA AL NGP 16A 	<p>HW SET: 08 DOOR NUMBER: 14</p> <p>EACH TO HAVE:</p> <ul style="list-style-type: none"> 626 IVE 3 EA HINGE 626 IVE 1 EA STOREROOM LOCK 626 SCH 1 EA SURFACE CLOSER 626 IVE 1 EA WALL/FLOOR STOP 689 LCN 1 SET SEALS 630 IVE 1 EA DOOR BOTTOM 626 IVE 1 EA THRESHOLD 652 IVE 6 EA HINGE 626 SCH 2 EA MANUAL FLUSH BOLT 630 GLY 1 EA DUST PROOF STRIKE 626 IVE 1 EA STOREROOM LOCK 626 IVE 2 EA WALL/FLOOR STOP 626 IVE 2 EA SILENCER 	<p>HW SET: 12 DOOR NUMBER: 09</p> <p>EACH TO HAVE:</p> <ul style="list-style-type: none"> 652 IVE 3 EA HINGE 626 SCH 1 EA PRIVACY SET 689 LCN 1 EA OVERHEAD STOP 626 IVE 3 EA SILENCER 652 IVE 3 EA HINGE 626 SCH 1 EA STOREROOM LOCK 626 IVE 1 EA SURFACE CLOSER 626 IVE 1 EA WALL/FLOOR STOP 689 LCN 1 SET SEALS 630 IVE 1 EA DOOR BOTTOM 626 IVE 1 EA THRESHOLD 652 IVE 3 EA HINGE 626 SCH 1 EA PRIVACY SET 626 IVE 1 EA WALL/FLOOR STOP 626 IVE 3 EA SILENCER 	<p>HW SET: 13 DOOR NUMBER: 16 17</p> <p>EACH TO HAVE:</p> <ul style="list-style-type: none"> 652 IVE 3 EA HINGE 626 SCH 1 EA PRIVACY SET 626 IVE 1 EA WALL/FLOOR STOP 626 IVE 3 EA SILENCER 652 IVE 3 EA HINGE 626 SCH 1 EA STOREROOM LOCK 626 IVE 1 EA SURFACE CLOSER 626 IVE 1 EA WALL/FLOOR STOP 689 LCN 1 SET SEALS 630 IVE 1 EA DOOR BOTTOM 626 IVE 1 EA THRESHOLD 652 IVE 3 EA HINGE 626 SCH 1 EA PRIVACY SET 626 IVE 1 EA WALL/FLOOR STOP 626 IVE 3 EA SILENCER
<p>HW SET: 09 DOOR NUMBER: 18</p> <p>EACH TO HAVE:</p> <ul style="list-style-type: none"> 652 IVE 6 EA HINGE 626 SCH 2 EA MANUAL FLUSH BOLT 630 GLY 1 EA DUST PROOF STRIKE 626 IVE 1 EA STOREROOM LOCK 626 IVE 2 EA WALL/FLOOR STOP 626 IVE 2 EA SILENCER 	<p>HW SET: 06 DOOR NUMBER: 02 12 13</p> <p>EACH TO HAVE:</p> <ul style="list-style-type: none"> 628 IVE 3 EA HINGE 626 SCH 1 EA STOREROOM LOCK 626 IVE 1 EA SURFACE CLOSER 626 IVE 1 EA WALL/FLOOR STOP 628 IVE 3 EA SILENCER 652 IVE 3 EA HINGE 626 SCH 1 EA STOREROOM LOCK 626 IVE 1 EA SURFACE CLOSER 626 IVE 1 EA WALL/FLOOR STOP 626 IVE 3 EA SILENCER 	<p>HW SET: 10 DOOR NUMBER: 15</p> <p>EACH TO HAVE:</p> <ul style="list-style-type: none"> 652 IVE 3 EA HINGE 626 SCH 1 EA PASSAGE SET 689 LCN 1 EA SURFACE CLOSER 626 IVE 1 EA KICK PLATE 626 IVE 1 EA WALL/FLOOR STOP 626 IVE 3 EA SILENCER 	<p>HW SET: 14 DOOR NUMBER: 10</p> <p>EACH TO HAVE:</p> <ul style="list-style-type: none"> 652 IVE 6 EA HINGE 626 SCH 2 EA SGL DUMMY TRIM 626 IVE 2 EA ROLLER LATCH 626 IVE 2 EA WALL/FLOOR STOP 626 IVE 2 EA SILENCER 652 IVE 3 EA HINGE 626 SCH 1 EA STOREROOM LOCK 626 IVE 1 EA SURFACE CLOSER 626 IVE 1 EA KICK PLATE 626 IVE 1 EA WALL/FLOOR STOP 626 IVE 3 EA SILENCER 	

Hermes Architects

Members A.I.A.
1177 West Loop South, Ste. 500
Houston, Texas 77027
Tel. 713-785-3644
www.hermesarchitects.com
Houston • Dallas • Ft. Worth

This document is an instrument of service protected by the copyright law of the United States of America, 17 U.S.C. § 102, and shall not be copied or reproduced without the express written consent of Hermes Architects, Inc.



Shaw's Jewelers
West Gray
1021 West Gray Ave.
Houston, Texas

Shaw's Jewelers
1014 West Gray Street
Houston, Texas 77019

DATE	11.11.2011
PROJECT NO.	1102100
DRAWN BY	--
CHECKED BY	--

Door Schedule and Details

A7.1