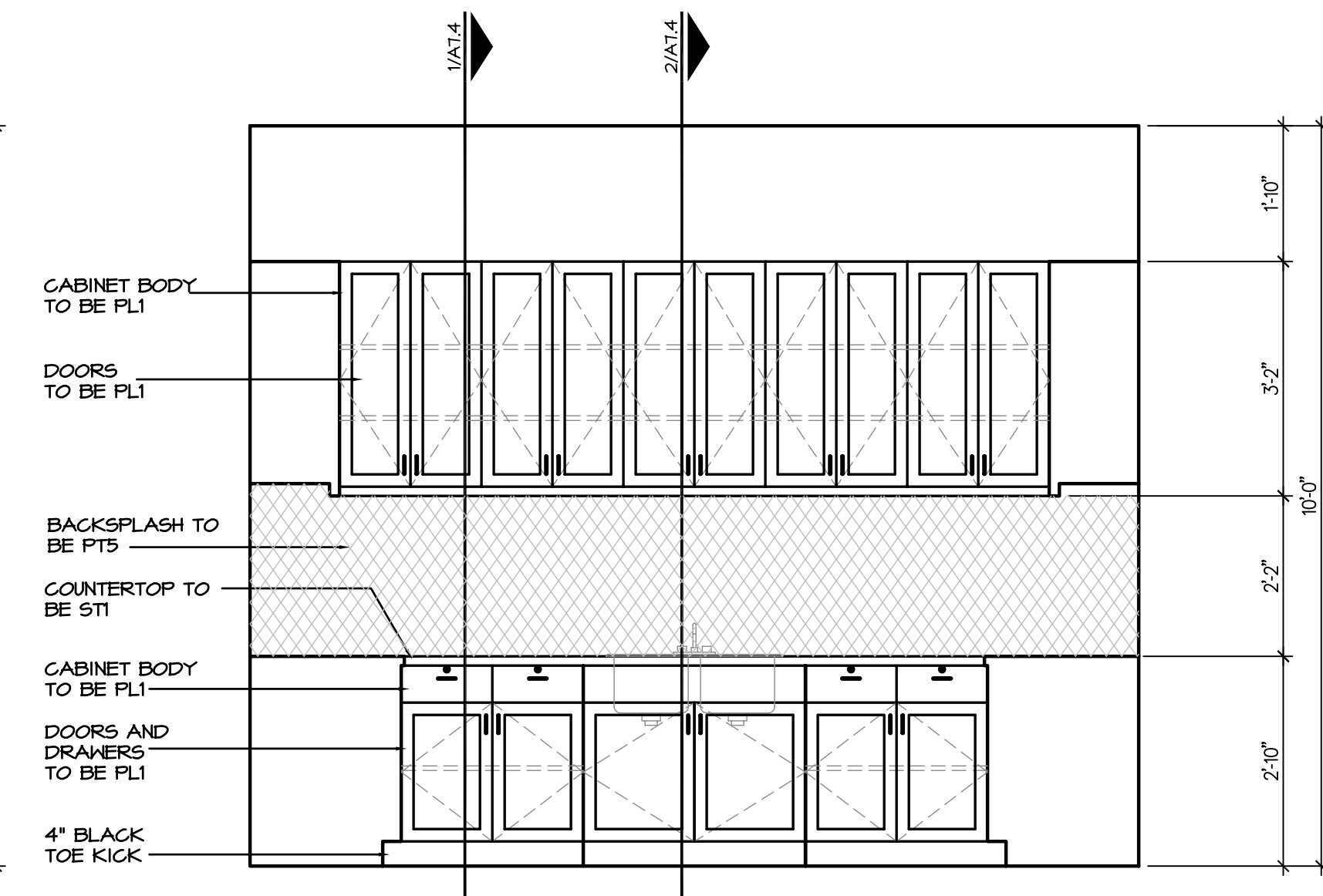
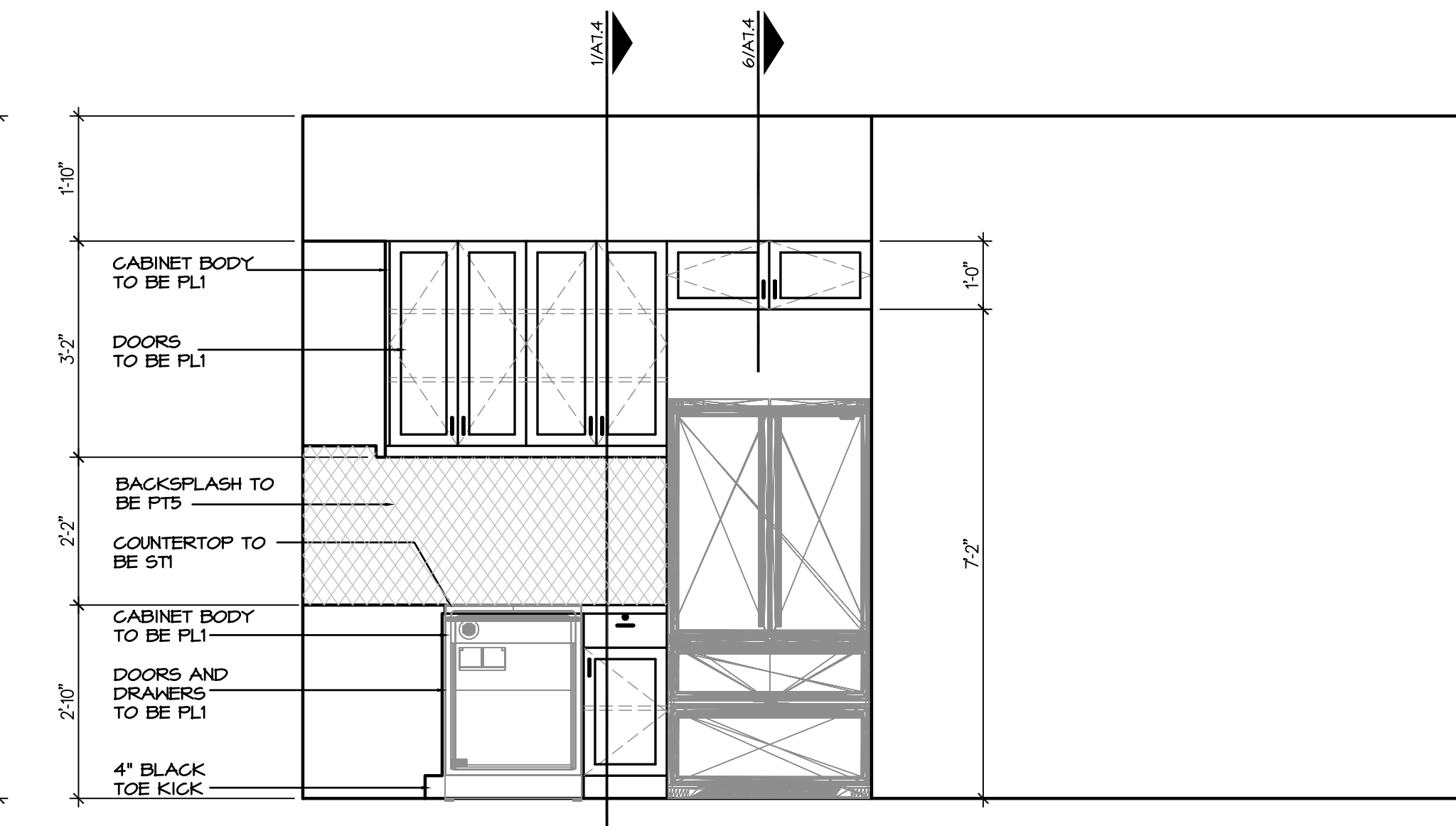


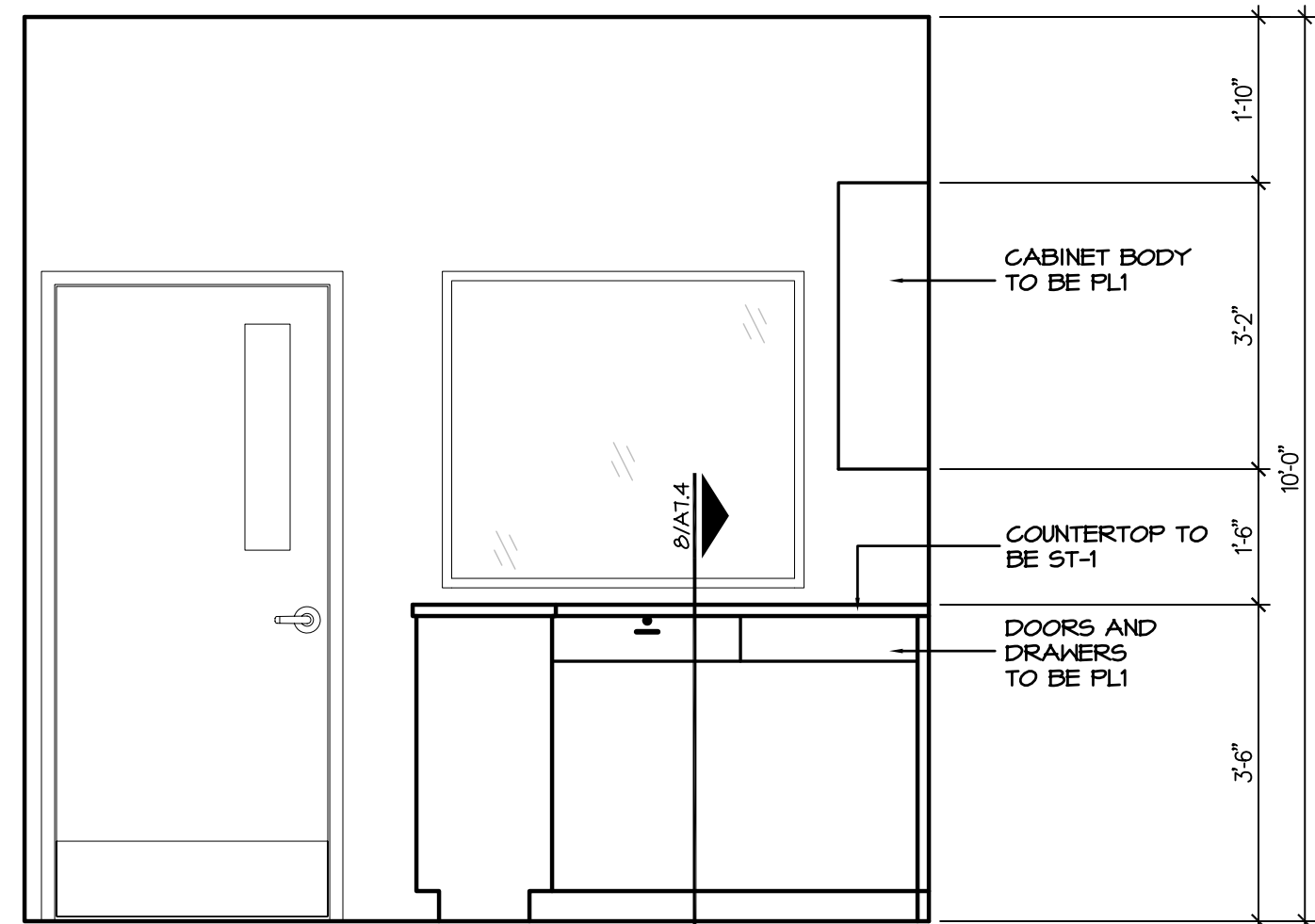
1
A6.2 MILLWORK ELEVATION
SCALE: 1/2" = 1'-0"



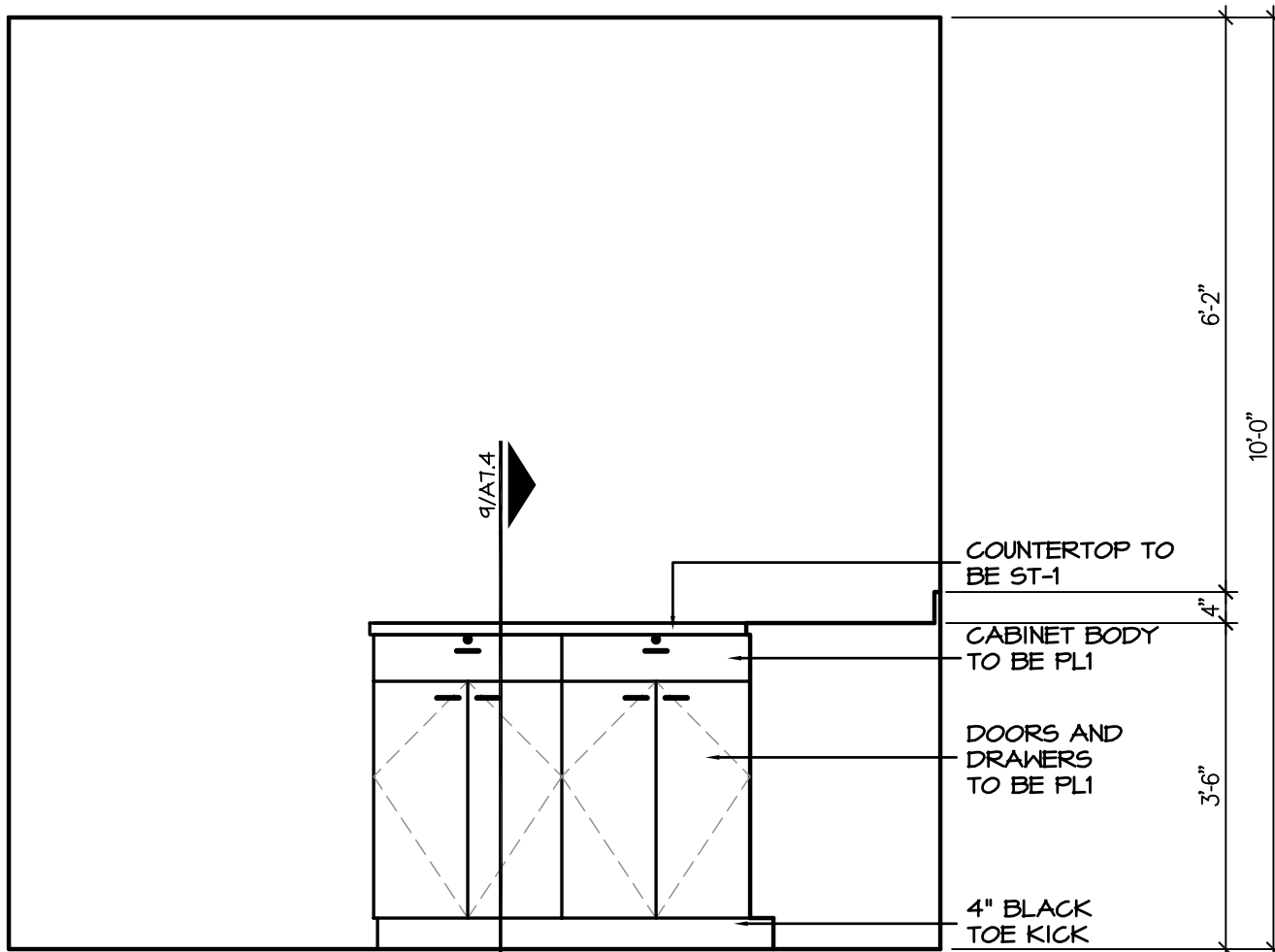
2
A6.2 MILLWORK ELEVATION
SCALE: 1/2" = 1'-0"



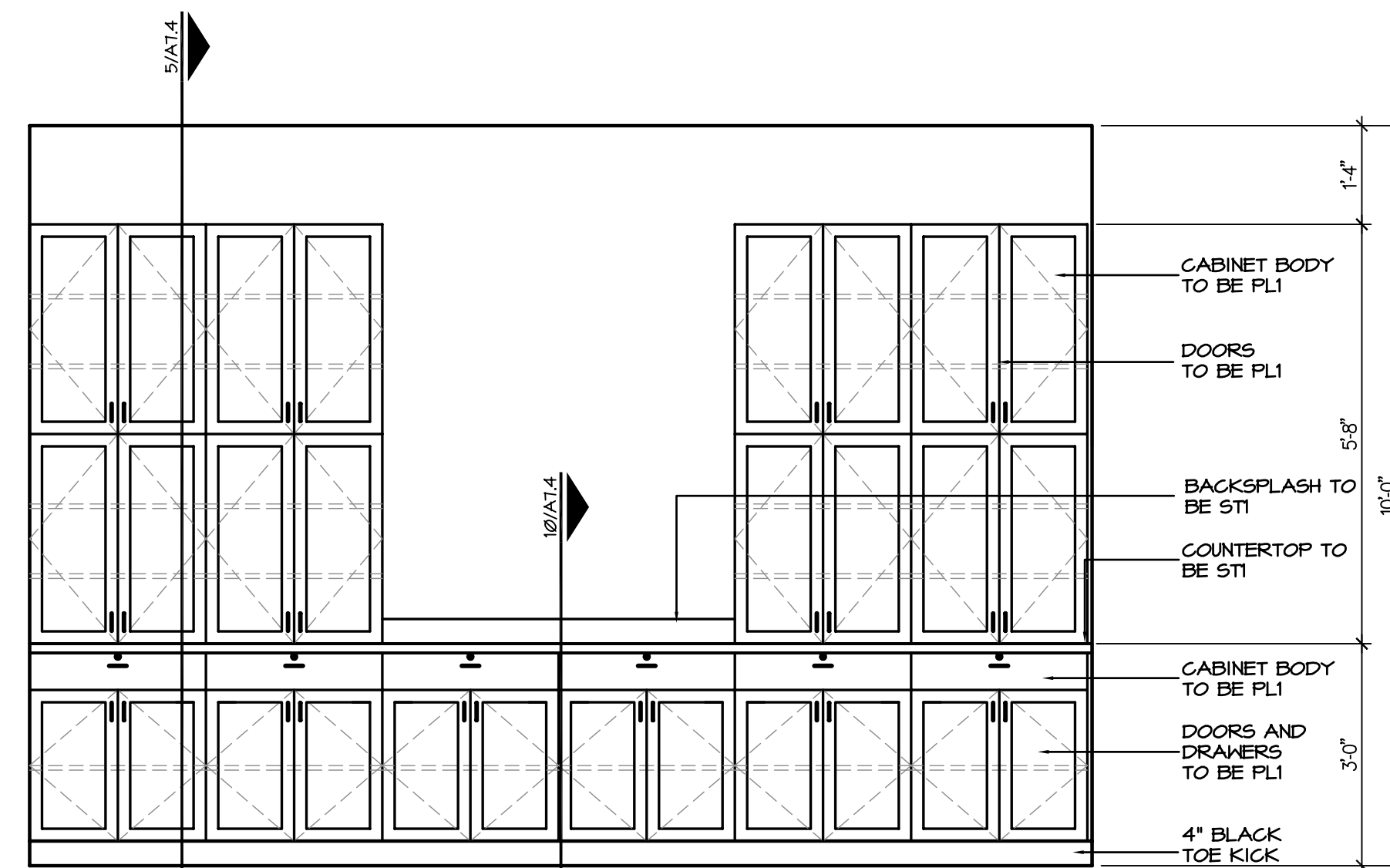
3
A6.2 MILLWORK ELEVATION
SCALE: 1/2" = 1'-0"



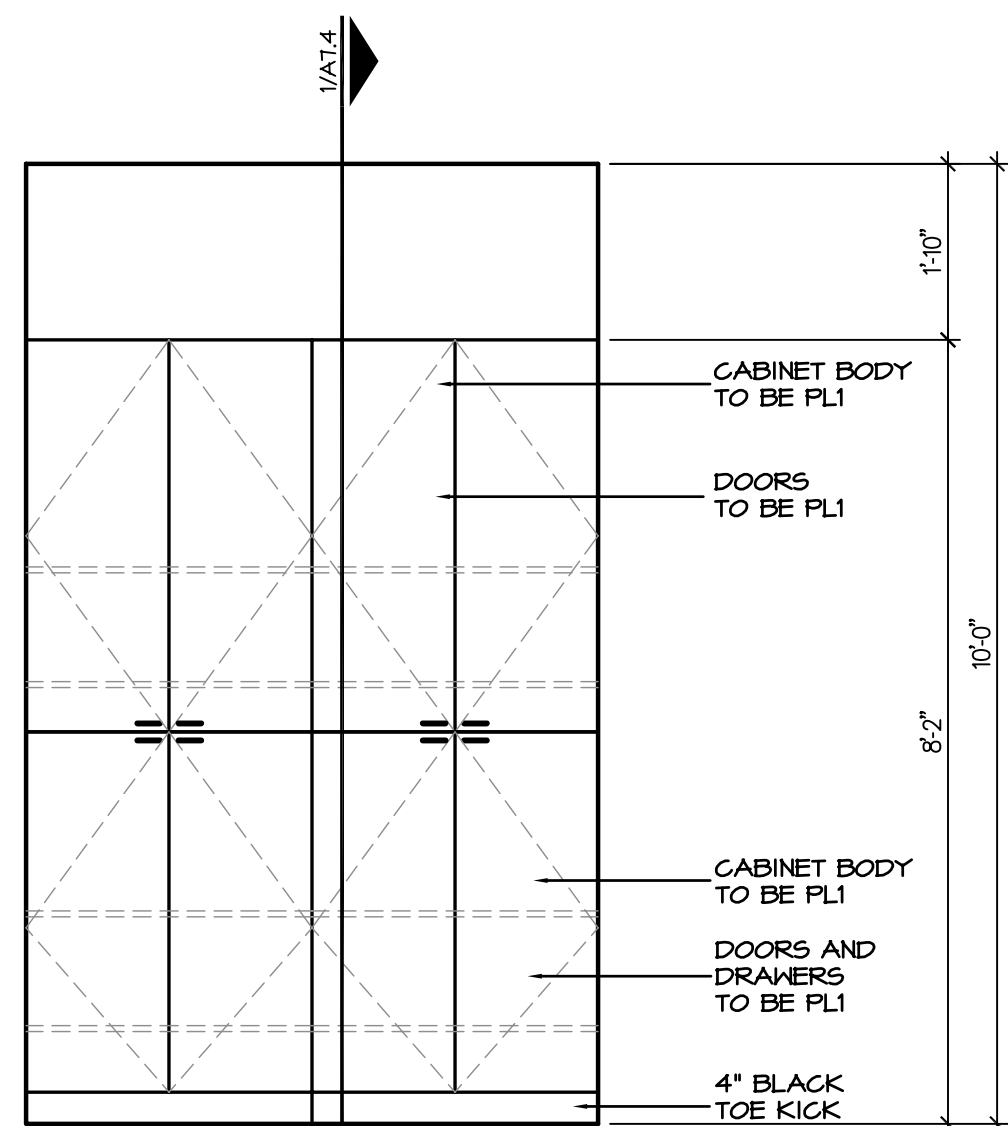
4
A6.2 MILLWORK ELEVATION
SCALE: 1/2" = 1'-0"



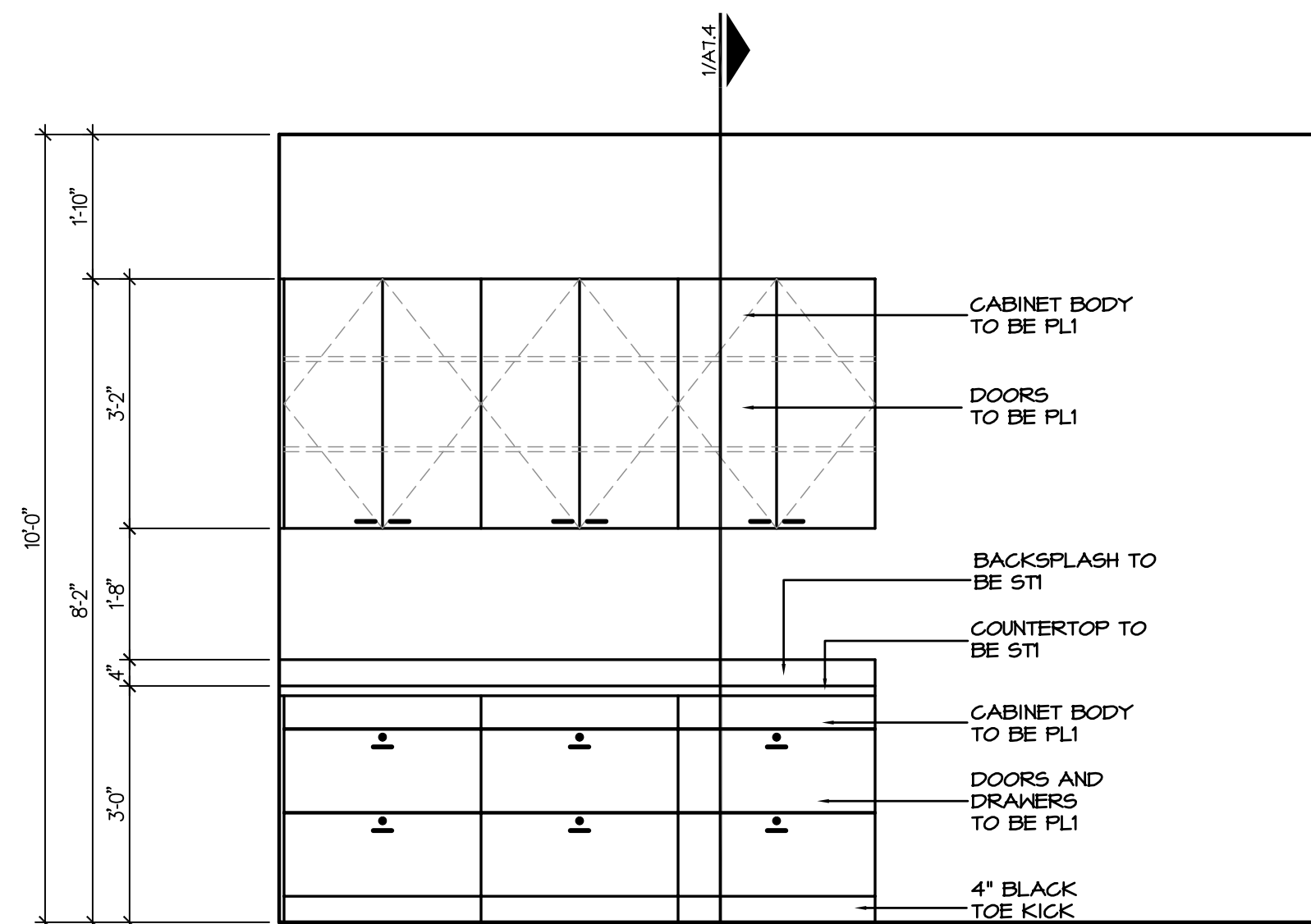
5
A6.2 MILLWORK ELEVATION
SCALE: 1/2" = 1'-0"



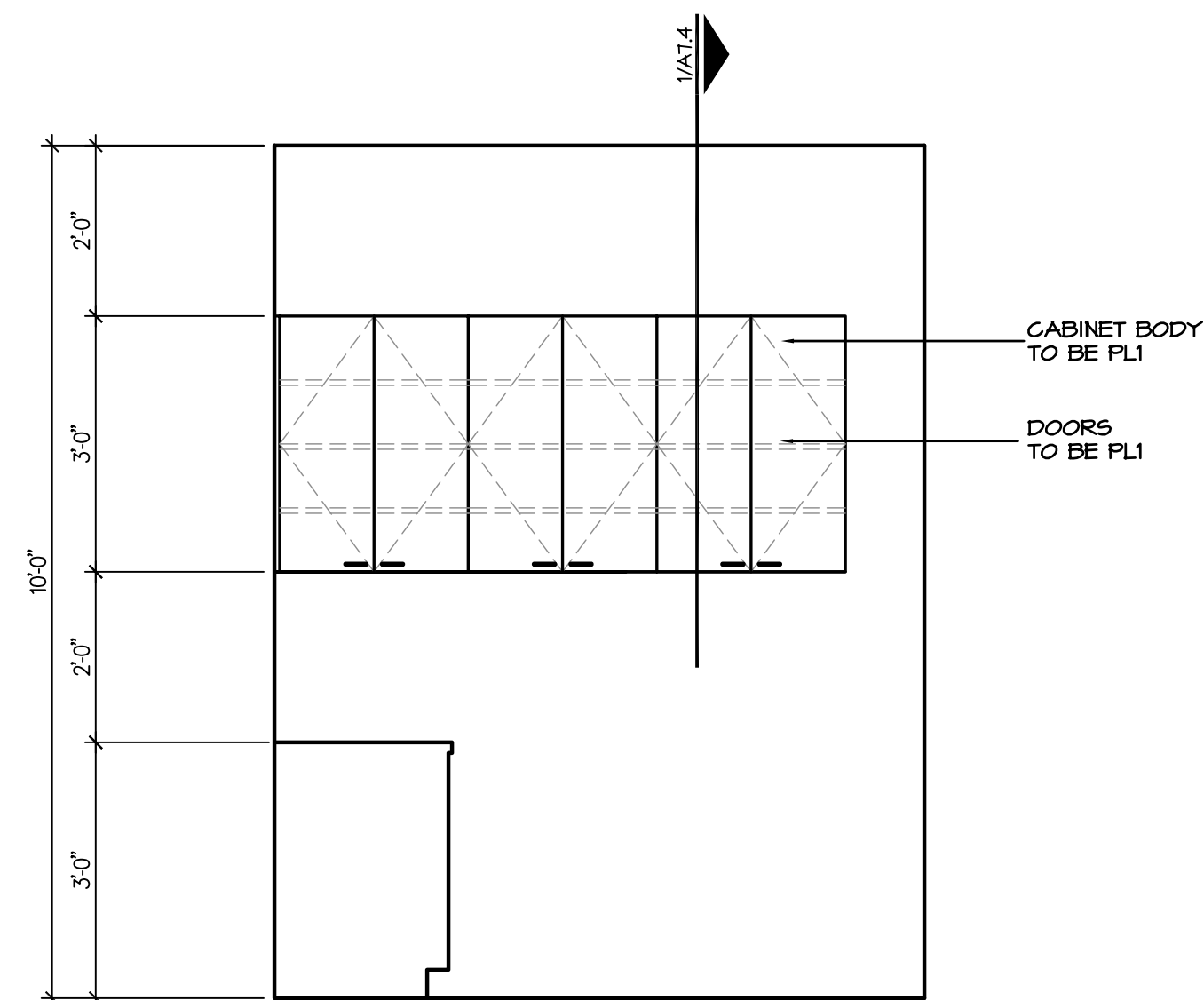
6
A6.2 MILLWORK ELEVATION
SCALE: 1/2" = 1'-0"



7
A6.2 MILLWORK ELEVATION
SCALE: 1/2" = 1'-0"



8
A6.2 MILLWORK ELEVATION
SCALE: 1/2" = 1'-0"



9
A6.2 MILLWORK ELEVATION
SCALE: 1/2" = 1'-0"

This document is an instrument of service protected by the copyright law of the United States of America, 17 U.S.C. § 102, and shall not be copied or reproduced without the express written consent of Hermes Architects, Inc.



Shaw's Jewelers
West Gray
1021 West Gray Ave.
Houston, Texas

Shaw's Jewelers
1014 West Gray Street
Houston, Texas 77019

DATE	11.11.2011
PROJECT NO.	1102100
DRAWN BY	--
CHECKED BY	--

Interior Elevations

A6.2