

- KEYED NOTES**
- ① PROPOSED 6" MONOLITHIC CONCRETE CURB (SEE DETAIL, THIS SHEET)
 - ② PROPOSED EDGE OF PAVEMENT – NO CURB
 - ③ TIE PROPOSED CURB INTO EXISTING CURB
 - ④ CONSTRUCT CURB RAMP (SEE DETAIL SHEET 13)
- PROPOSED 5" (LIGHT DUTY) CONCRETE PAVEMENT WITH 6" LIME TREATED SUBGRADE (SEE NOTE 2 BELOW)
- PROPOSED 6" (MEDIUM DUTY) CONCRETE PAVEMENT WITH 6" LIME TREATED SUBGRADE (SEE NOTE 2 BELOW)
- PROPOSED 7" (HEAVY DUTY) CONCRETE PAVEMENT WITH 6" LIME TREATED SUBGRADE (SEE NOTE 2 BELOW)
- PROPOSED BUILDING PERIMETER SIDEWALK (REF. ARCHITECTURAL PLANS FOR SURFACE FINISH, SEE GRADING ON SHEET 9, AND SEE DETAIL THIS SHEET)
- PROPOSED IRRIGATION SLEEVE (SEE NOTE 3)
- CONCRETE TO CONCRETE PAVEMENT CONNECTION (INCLUDING 2' SAWCUT, EXISTING PAVEMENT REMOVAL, DOWEL INTO EXISTING PAVEMENT, CONCRETE PAVEMENT HEADER AND SEALED JOINTS)

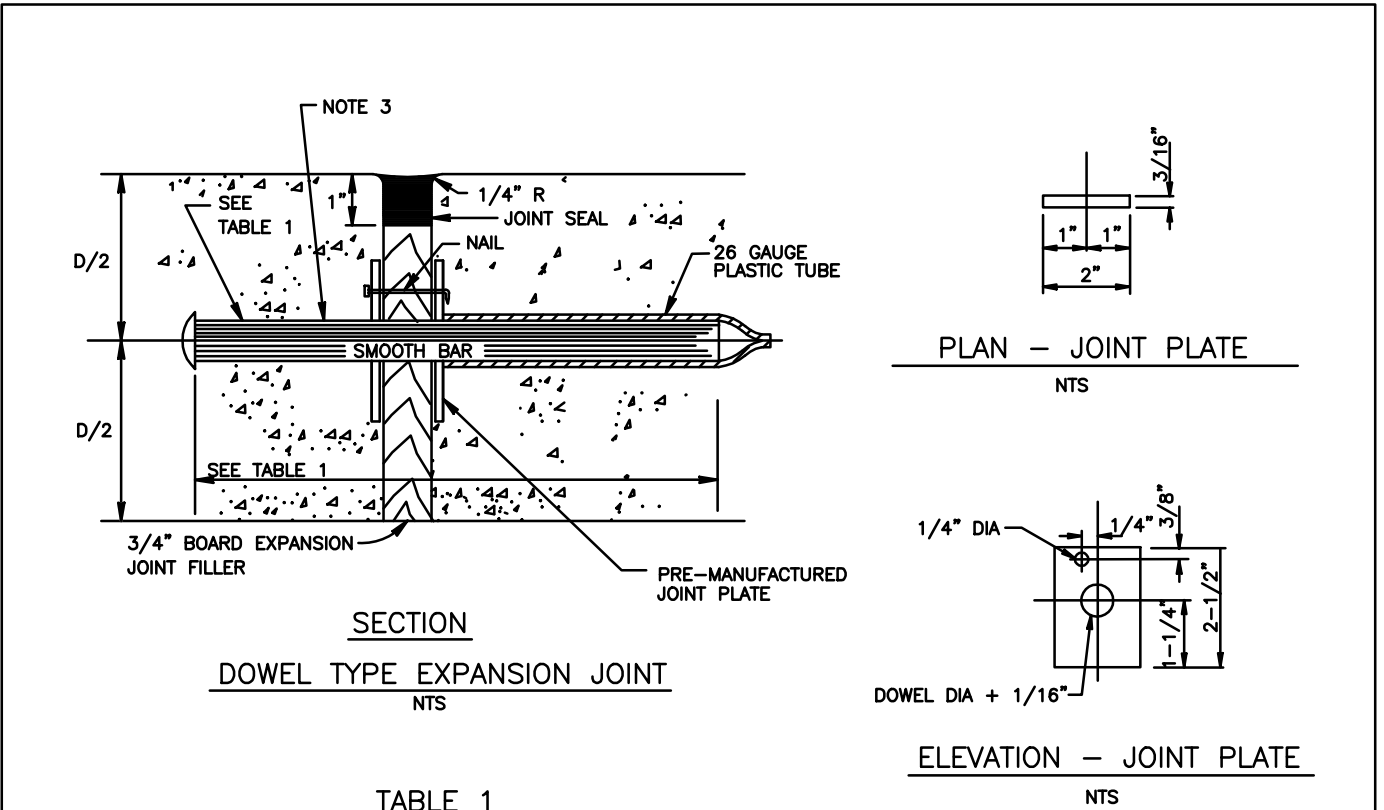
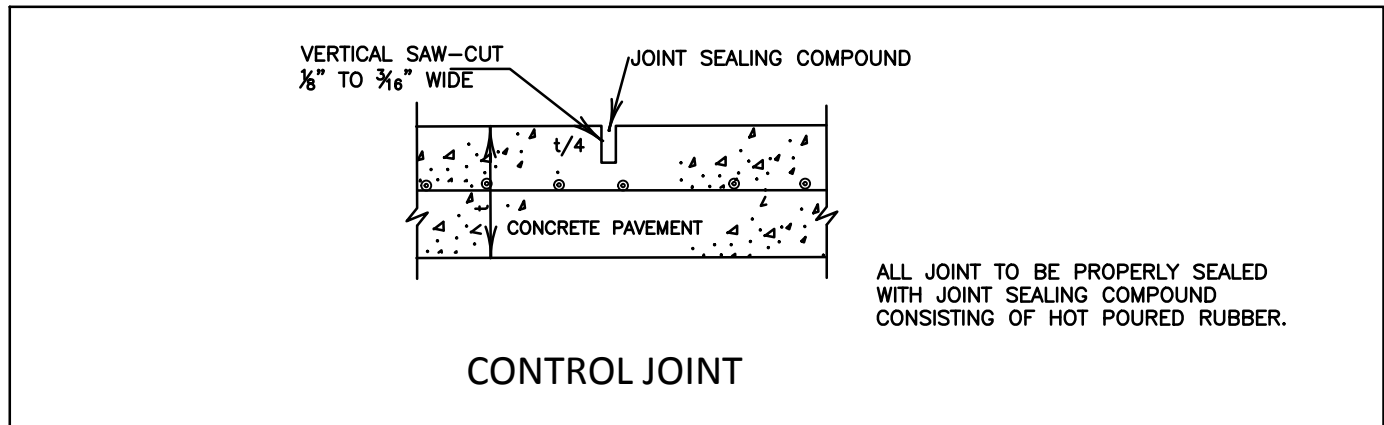
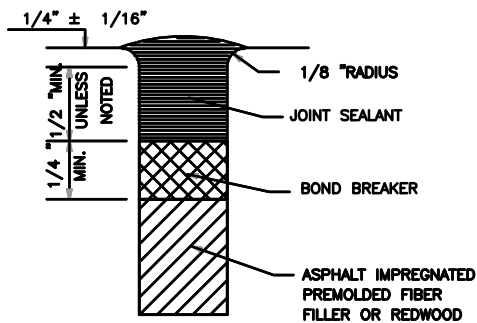
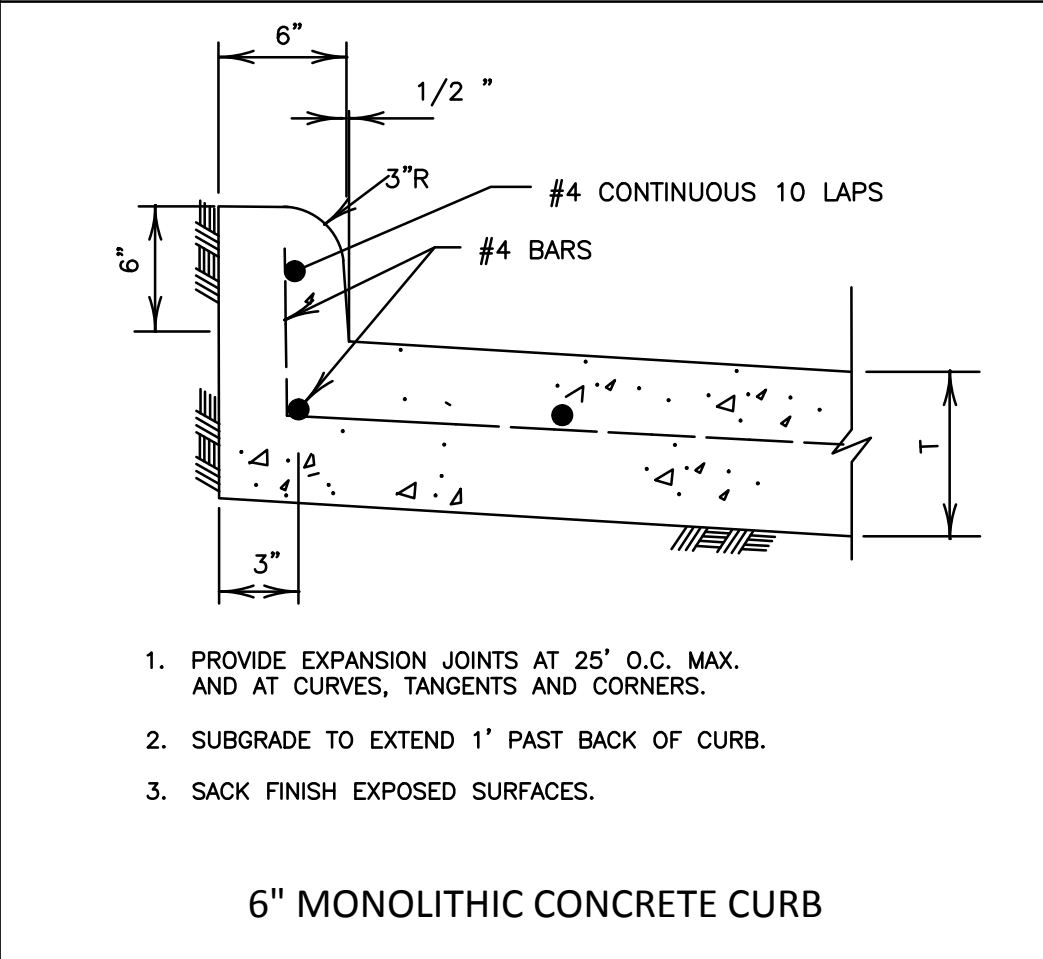
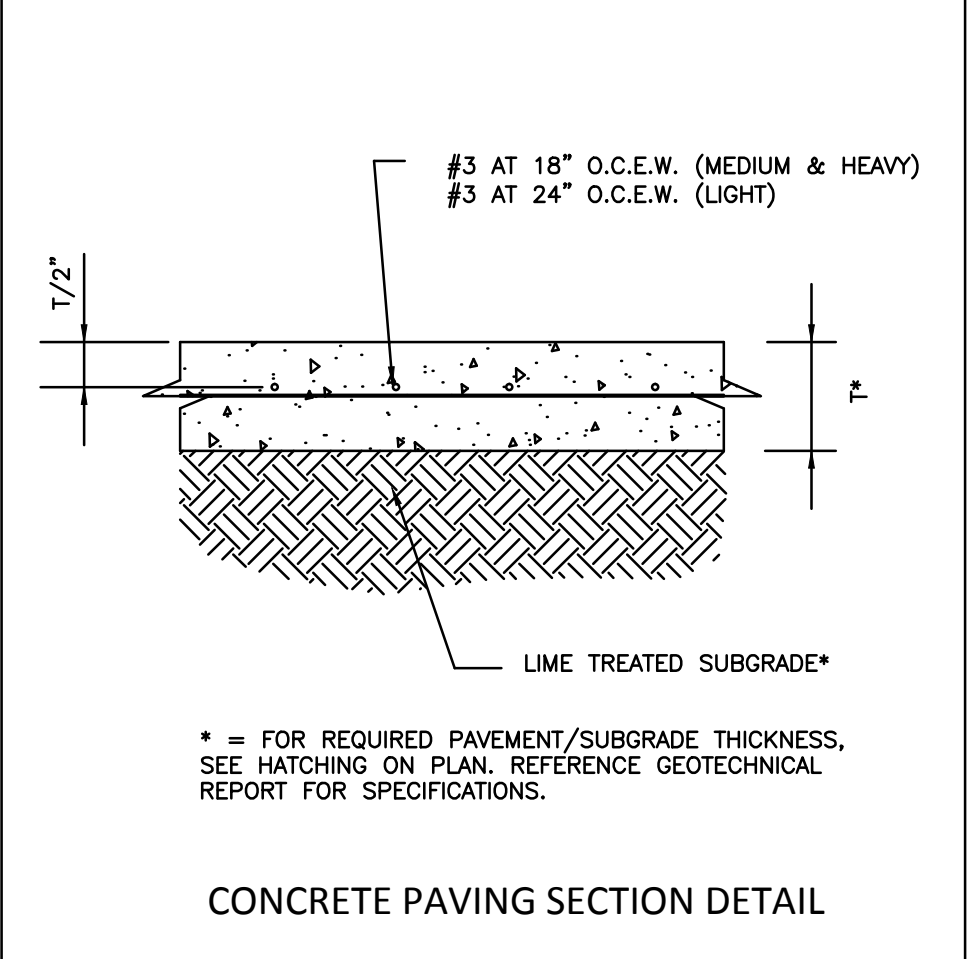
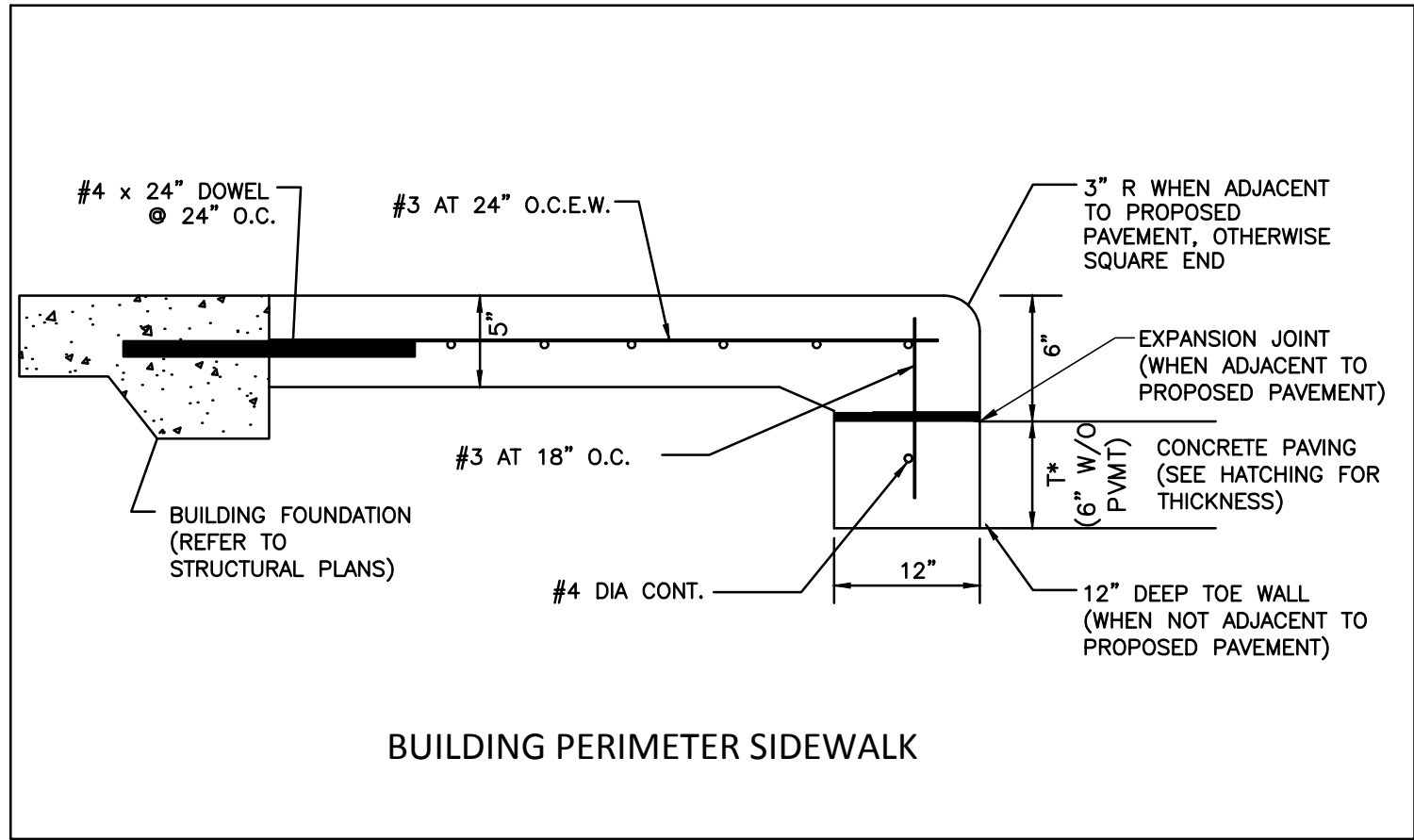


TABLE 1

PAVEMENT THICKNESS (IN)	DOWEL SIZES AND SPACINGS		
	DIAMETER (IN)	LENGTH (IN)	SPACING (IN)
6	3/4	18	12
7	1	18	12
8	1	18	12
9	1 1/4	18	12
10	1 1/4	18	12
11	1 1/4	18	12
12	1 1/4	18	12



- NOTES:
- STEEL TO MEET ASTM STANDARD SPECIFICATIONS FOR CONCRETE REINFORCING BARS. UNITS TO BE SPACED ON 12" CENTERS.
 - CENTER DOWEL HORIZONTALLY ON JOINT.
 - CENTER DOWEL VERTICALLY IN CONCRETE BASE. EXTEND THICKENED CONCRETE AS NEEDED TO MAINTAIN 3" MIN. COVER.
 - THE LOCATION OF CONSTRUCTION JOINTS AND DEFORMED METAL STRIPS MAY BE VARIED WITH THE APPROVAL OF THE COUNTY ENGINEER.



- GENERAL NOTES**
- REFER TO SITE ELECTRICAL PLAN FOR PROPOSED SITE LIGHTING LAYOUT.
 - PAVEMENT AND SUBGRADE THICKNESS INCLUDED ON THIS SHEET FOR REFERENCE ONLY. REFER TO GEOTECHNICAL REPORT PREPARED BY GORRONDONA & ASSOCIATES, INC., DATED OCTOBER 2011 (PROJECT NO. 11-0285).
 - REFER TO IRRIGATION PLAN FOR EXACT LOCATION OF IRRIGATION SLEEVES.
 - MAXIMUM CONTROL JOINT SPACING TO BE 12.5-FT (LIGHT)/15-FT (MEDIUM AND HEAVY) AND EXPANSION JOINT SPACING TO BE 60-FT.
 - CONCRETE PAVEMENT TO HAVE 28-DAY COMPRESSIVE STRENGTH OF 3,500 PSI AND ALL STEEL TO BE GRADE 60.

MULTIPLE EXISTING PUBLIC AND PRIVATE UTILITY LINES EXIST ON THIS SITE. THE UTILITY LINES SHOWN ON THESE DRAWINGS REFLECT INFORMATION OBTAINED FROM RECORD DRAWINGS AND MAY NOT INCLUDE ALL EXISTING UTILITIES. CONTRACTOR IS TO USE EXTREME CAUTION DURING ALL CONSTRUCTION ACTIVITIES AND IS SOLELY RESPONSIBLE FOR DAMAGE TO EXISTING FACILITIES.

Hermes Architects

Members A.I.A.
1177 West Loop South, Ste. 500
Houston, Texas 77027
Tel. 713-785-3644
www.hermesarchitects.com
Houston • Dallas • Ft. Worth

This document is an instrument of service protected by the copyright law of the United States of America, 17 U.S.C. § 102, and shall not be copied or reproduced without the express written consent of Hermes Architects, Inc.



4 JANUARY 2011

Shaw's Jewelers
West Gray
1021 West Gray Ave.
Houston, Texas

Shaw's Jewelers
1014 West Gray Street
Houston, Texas 77019

DATE	1.4.2012
PROJECT NO.	1102100
DRAWN BY	DD
CHECKED BY	KEM

PAVING PLAN