

BENCHMARK PUBLISHED ELEVATION - 41.84'

FLOODPLAIN REFERENCE MARK NO. 210065, BRASS DISK STAMPED 210065 ON BRIDGE AT SOUTH HEIGHTS BLVD. AND BUFFALO BAYOU LOCATED ON NORTHEAST CORNER OF DOWNSTREAM CONCRETE WALK IN KEY MAP 492M IN THE BUFFALO WATERSHED NEAR STREAM W100-00-00 (NAVD 1988, 2001 ADJUSTMENT).

TEMPORARY BENCHMARK "A" ELEVATION - 50.40'

CUT BOX ON "BB" INLET LOCATED ON THE SOUTHERLY SIDE OF WEST GRAY AVENUE AT THE INTERSECTION OF WEST GRAY AVENUE AND COLUMBUS STREET.

TEMPORARY BENCHMARK "B" ELEVATION - 52.68'

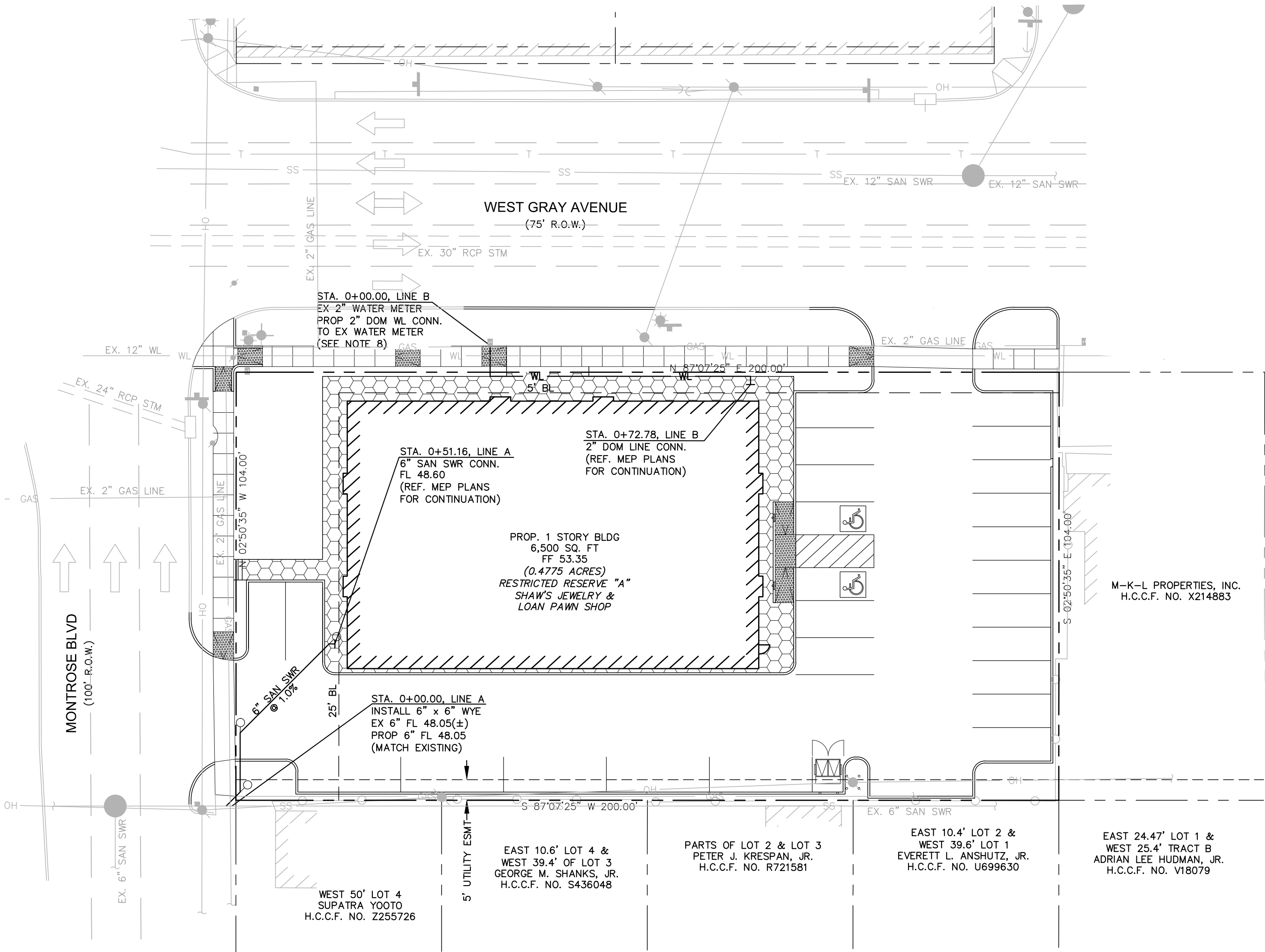
MOST NORTHERLY FLANGE BOLT ON FIRE HYDRANT LOCATED AT THE SOUTHEASTERLY CORNER OF THE INTERSECTION OF WEST GRAY AVENUE AND MONTROSE BOULEVARD.

GENERAL NOTES

- REFERENCE SANITARY SEWER, WATER LINE, AND STORM SEWER NOTES SHEET 2 FOR PIPE MATERIAL REQUIREMENTS.
- REFER TO SITE ELECTRICAL PLAN FOR PROPOSED SITE LIGHT LOCATIONS AND LIGHTING CONDUIT LAYOUT.
- REFERENCE MEP PLANS FOR CONTINUATION OF SANITARY AND WATER FACILITIES INSIDE BUILDING.
- ALL CLEANOUTS LOCATED WITHIN CONCRETE PAVEMENT TO BE FLUSH WITH THE TOP OF PAVEMENT.
- FOR EXISTING EASEMENT RECORDATION INFORMATION, SEE SHEET 3.
- CONTRACTOR TO RELOCATE ALL EX. IRRIGATION LINES AND APPURTENANCES WITHIN PROP. SITE BOUNDARY.
- FOR CITY OF HOUSTON TYPE "A" INLET, COH TYPE "C" MH, AND BACKFILL DETAILS, SEE SHEET 12.
- SIZE OF EXISTING METER NOT VERIFIED. CONTRACTOR TO NOTIFY ENGINEER IF EXISTING METER SIZE DIFFERS FROM SIZE REFERENCED IN DRAWING.

LEGEND

SS	CLEANOUT	PROPOSED SANITARY SEWER
WL		PROPOSED WATER LINE
==		PROPOSED STORM SEWER
□		PROPOSED GRATE INLET
O		PROPOSED MANHOLE
---	GAS	EX. UNDERGROUND GAS LINE
==		EX. STORM SEWER
---	WL	EX. WATER LINE
---	SS	EX. SANITARY SEWER LINE



CALL BEFORE YOU DIG  
TEXAS ONE CALL PARTICIPANTS REQUEST  
72 HOURS NOTICE BEFORE YOU DIG, DRILL  
OR BLAST - STOP CALL  
TEXAS ONE CALL SYSTEM  
1-800-245-4545

Hermes Architects

Members A.I.A.  
1177 West Loop South, Ste. 500  
Houston, Texas 77027  
Tel. 713-785-3644  
www.hermesarchitects.com  
Houston • Dallas • Ft. Worth

This document is an instrument of service protected by the copyright law of the United States of America, 17 U.S.C. § 102, and shall not be copied or reproduced without the express written consent of Hermes Architects, Inc.



4 JANUARY 2011

Shaw's Jewelers  
West Gray  
1021 West Gray Ave.  
Houston, Texas

Shaw's Jewelers  
1014 West Gray Street  
Houston, Texas 77019

DATE	1.4.2012
PROJECT NO.	1102100
DRAWN BY	DD
CHECKED BY	KEM

UTILITY PLAN