

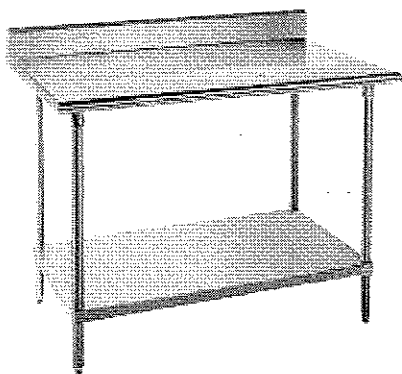
2704 NAVIGATION BLVD.
HOUSTON, TX

3303 S.RICE , SUITE #200 HOUSTON, TX 77056
(713) 572-5200 sammyreese@sbcglobal.net

A222



STAINLESS STEEL
WORK TABLES
PREMIUM Series - 5" Backsplash - Undershelf Style



Item #: _____ **Qty #:** _____

Model #: _____

Project #: _____

FEATURES:

Top is furnished with a 1 5/8" sanitary rolled rim edge on front, 1 5/8" square side edges, and a 5" splash with a 1" return on the rear side.

24" wide tables supplied with TWO hat channels stud welded to reinforce and maintain a level working surface. 30" and 36" wide tables supplied with THREE hat channels.

Pre-engineered welded angle adapters insure ease of future drawer installation.

Aluminum die cast "leg-to-shelf" clamp secures shelf to leg eliminating unsightly nuts and bolts. Undershelf is adjustable.

CONSTRUCTION:

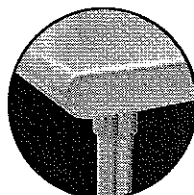
All TIG welded. Exposed weld areas polished to match adjacent surfaces.

Entire top mechanically polished to a satin finish.

Top is sound deadened.

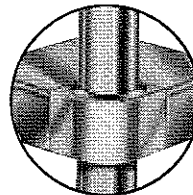
Roll formed embossed galvanized hat channels are secured to top by means of structural adhesive and weld studs.

Gussets welded to support hat sections.



NEW

Rolled Rim Edges on Front & Splash on Back and Square Side Edges



Featuring as Standard:
"THE PROVEN"

ORIGINAL ADVANCE TABCO Adjustable Undershelf with Die Cast Leg Clamp

MATERIAL:

KSS-SERIES: Stainless Steel Legs & Undershelf

TOP: 14 gauge stainless steel type "304" series.

SHELF: 18 gauge stainless steel.

LEGS: 1 5/8" diameter tubular stainless steel.
 1" adjustable stainless steel bullet feet.
 Stainless steel gussets.

KLK-SERIES: Galvanized Legs & Undershelf

TOP: 14 gauge stainless steel type "304" series.

SHELF: 18 gauge galvanized steel.

LEGS: 1 5/8" diameter tubular galvanized steel.
 1" adjustable plastic bullet feet.
 Galvanized steel gussets.

KSS-Series:
Stainless Steel Legs & Undershelf

L	24" Wide	30" Wide	36" Wide
30"	KSS-240	KSS-300	
24"	KSS-242	KSS-302	
36"	KSS-243	KSS-303	KSS-363
48"	KSS-244	KSS-304	KSS-364
60"	KSS-245	KSS-305	KSS-365
72"	KSS-246	KSS-306	KSS-366
84"	KSS-247	KSS-307	KSS-367
96"	KSS-248	KSS-308	KSS-368
108"	KSS-249	KSS-309	KSS-369
120"	KSS-2410	KSS-3010	KSS-3610
132"	KSS-2411	KSS-3011	KSS-3611
144"	KSS-2412	KSS-3012	KSS-3612



KLK-Series:
Galvanized Steel Legs & Undershelf

L	24" Wide	30" Wide	36" Wide
30"	KLK-240	KLK-300	
24"	KLK-242	KLK-302	
36"	KLK-243	KLK-303	KLK-363
48"	KLK-244	KLK-304	KLK-364
60"	KLK-245	KLK-305	KLK-365
72"	KLK-246	KLK-306	KLK-366
84"	KLK-247	KLK-307	KLK-367
96"	KLK-248	KLK-308	KLK-368
108"	KLK-249	KLK-309	KLK-369
120"	KLK-2410	KLK-3010	KLK-3610
132"	KLK-2411	KLK-3011	KLK-3611
144"	KLK-2412	KLK-3012	KLK-3612

Create Your Own Efficient Workstation with the Available Standard Accessories (Visit Section K)



Customer Service Available To Assist You **1-800-645-3166** 8:30 am - 8:00 pm E.S.T.

Email Orders To: customer@advancetabco.com. For Smart Fabrication™ Quotes, Email To: smartfab@advancetabco.com or Fax To: 631-586-2933

NEW YORK

Fax: (631) 242-6900

GEORGIA

Fax: (770) 775-5625

TEXAS

Fax: (972) 932-4795

NEVADA

Fax: (775) 972-1578

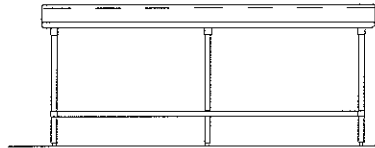
DETAILS and SPECIFICATIONS

ALL DIMENSIONS ARE TYPICAL TOL $\pm .500"$

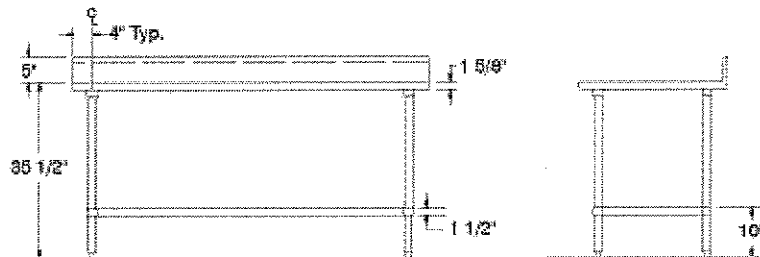
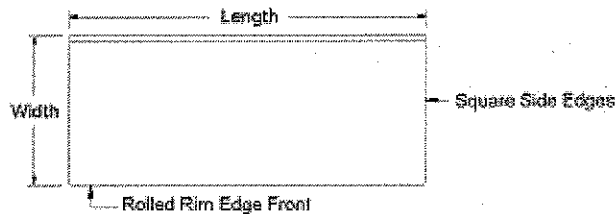
All Units Shipped Unassembled (KD) for Reduced Shipping Costs.

KSS & KLG Series Undershelf Style 5" Backsplash

Finished size of undershelf = Length minus 5 3/4"
Width minus 5 3/4"



Units 8ft. and larger are furnished with six (6) legs



KSS-Series: Stainless Steel Legs & Undershelf

L	24" Wide	Wt.	30" Wide	Wt.	36" Wide	Wt.
30"	KSS-240	55 lbs.	KSS-300	70 lbs.		
24"	KSS-242	50 lbs.	KSS-302	56 lbs.		
36"	KSS-243	66 lbs.	KSS-303	77 lbs.	KSS-363	92 lbs.
48"	KSS-244	81 lbs.	KSS-304	92 lbs.	KSS-364	101 lbs.
60"	KSS-245	95 lbs.	KSS-305	111 lbs.	KSS-365	121 lbs.
72"	KSS-246	113 lbs.	KSS-306	129 lbs.	KSS-366	142 lbs.
84"	KSS-247	135 lbs.	KSS-307	153 lbs.	KSS-367	169 lbs.
96"	KSS-248	150 lbs.	KSS-308	171 lbs.	KSS-368	189 lbs.
108"	KSS-249	165 lbs.	KSS-309	195 lbs.	KSS-369	260 lbs.
120"	KSS-2410	268 lbs.	KSS-3010	294 lbs.	KSS-3610	315 lbs.
132"	KSS-2411	301 lbs.	KSS-3011	331 lbs.	KSS-3611	358 lbs.
144"	KSS-2412	316 lbs.	KSS-3012	346 lbs.	KSS-3612	373 lbs.

KLK-Series: Galvanized Steel Legs & Undershelf

L	24" Wide	Wt.	30" Wide	Wt.	36" Wide	Wt.
30"	KLK-240	55 lbs.	KLK-300	70 lbs.		
24"	KLK-242	50 lbs.	KLK-302	56 lbs.		
36"	KLK-243	66 lbs.	KLK-303	77 lbs.	KLK-363	92 lbs.
48"	KLK-244	81 lbs.	KLK-304	92 lbs.	KLK-364	101 lbs.
60"	KLK-245	95 lbs.	KLK-305	111 lbs.	KLK-365	121 lbs.
72"	KLK-246	113 lbs.	KLK-306	129 lbs.	KLK-366	142 lbs.
84"	KLK-247	135 lbs.	KLK-307	153 lbs.	KLK-367	169 lbs.
96"	KLK-248	150 lbs.	KLK-308	171 lbs.	KLK-368	189 lbs.
108"	KLK-249	165 lbs.	KLK-309	195 lbs.	KLK-369	260 lbs.
120"	KLK-2410	268 lbs.	KLK-3010	294 lbs.	KLK-3610	315 lbs.
132"	KLK-2411	301 lbs.	KLK-3011	331 lbs.	KLK-3611	358 lbs.
144"	KLK-2412	316 lbs.	KLK-3012	346 lbs.	KLK-3612	373 lbs.





CBA-36R-CP10



Project: _____	AIA# _____
Item #: _____ Qty: _____	SIS# _____
Model #: _____	

Combo Ice Bins

See reverse side for model number key

Standard Features

- All stainless steel construction
- One-piece, seamless top and backsplash
- ABS plastic breaker strip around ice bin liner: creates 5/16" raised edge around liner, acts as thermal barrier to prevent heat transfer, and makes the cover slide easier
- Two tubing chase holes built-in to backsplash
- Available in 6" incremental lengths from 30" to 60"
- 24" deep version provides larger ice bin not just a deck extension on the back of the 19" deep model
- Sliding stainless steel cover
- CFC free foamed-in-place insulation
- Adjustable stainless steel bullet feet
- Ten circuit cold plate is available on units where the main ice bin liner is 22" or wider (add suffix '-CP10' to model number)
- Combo Ice Bins combine separate draining ice bin and bottle well compartments into one integral unit. The fully insulated 12" bottle well comes with two wire racks for ice chilled storage of 6 or 8 bottles in 19" or 24" deep ice bins, respectively. The bottle well may be located on the left, right, or both sides of the ice bin.

NOTE: Combo Ice Bins are not recommended for dry, room temperature storage of bottles - instead, higher bottle capacity Liquor Displays (see page 3.23) should be ordered

Specifications

Drain

- Non-cold plate model: 1-1/2" tailpiece
- Ten circuit cold plate model: 3/4" MPT

Tubing Access Holes

- 7/8" by 2-7/8" (capacity per hole is 12 lines of 1/4" I.D. x 3/8" O.D. nylon braided tubing)

Cover

- Two-piece sliding cover, 20 gauge stainless steel, included with all models

Cold Plate

- Ten circuit available for 22" wide (main liner) and larger models only
- Connection is 5/16" O.D. stainless steel tubing with swaged end

Liner Depth

- 10-1/2" standard
- 14-1/2" extra deep

Ice Capacity

- "A" depth standard = 2.79 lbs X length
- "A" depth extra deep = 3.85 lbs X length
- "B" depth standard = 3.54 lbs X length
- "B" depth extra deep = 4.89 lbs X length

Legs

- 1-5/8" diameter 16 gauge stainless steel
- Stainless steel bullet feet

Materials

- 20 gauge stainless steel
- ABS plastic breaker strip around opening of ice bin liner

Glastender, Inc. • 5400 North Michigan Road • Saginaw, MI • 48604-9780
989.752.4275 • 800.748.0423 • Fax 989.752.4444
www.glastender.com

Approval/Notes:

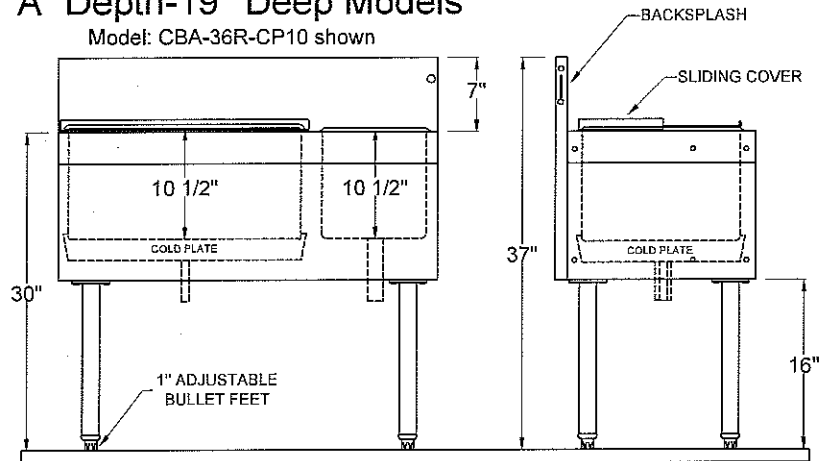
Specifications subject to change without notice. For current specifications please visit our website.

Combo Ice Bins

Dimensional Information

"A" Depth-19" Deep Models

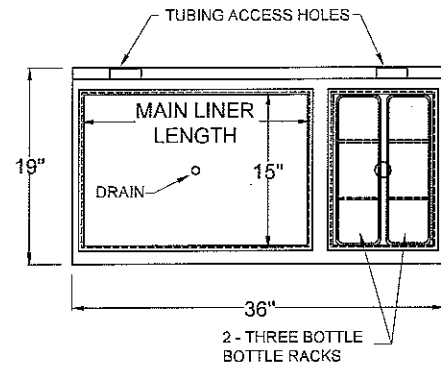
Model: CBA-36R-CP10 shown



Front Elevation

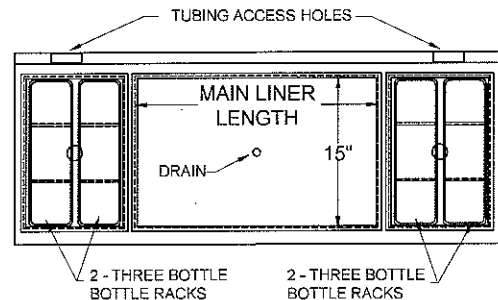
Side Elevation

Model Number	Overall Length	Main Liner length	Bottle Well Location	Optional Cold Plate
CBA-30 L or R	30"	16"	Left or Right	N/A
CBA-36 L or R	36"	22"	Left or Right	CP10
CBA-42	42"	16"	Left and Right	N/A
CBA-42 L or R	42"	28"	Left or Right	CP10
CBA-48	48"	22"	Left and Right	CP10
CBA-48 L or R	48"	34"	Left or Right	CP10
CBA-54	54"	28"	Left and Right	CP10
CBA-60	60"	34"	Left and Right	CP10



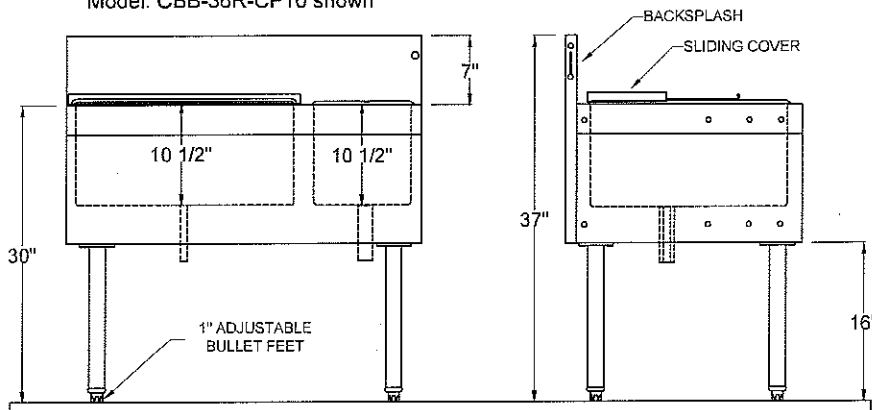
Plan View

Plan view detailing two bottle well models
Model: CBA-48-CP10 shown



"B" Depth-24" Deep Models

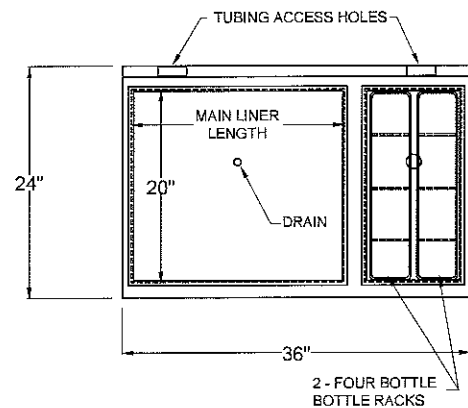
Model: CBB-36R-CP10 shown



Front Elevation

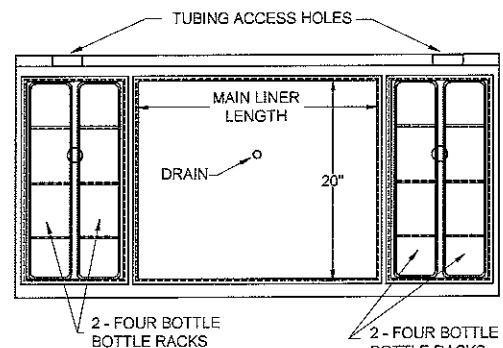
Side Elevation

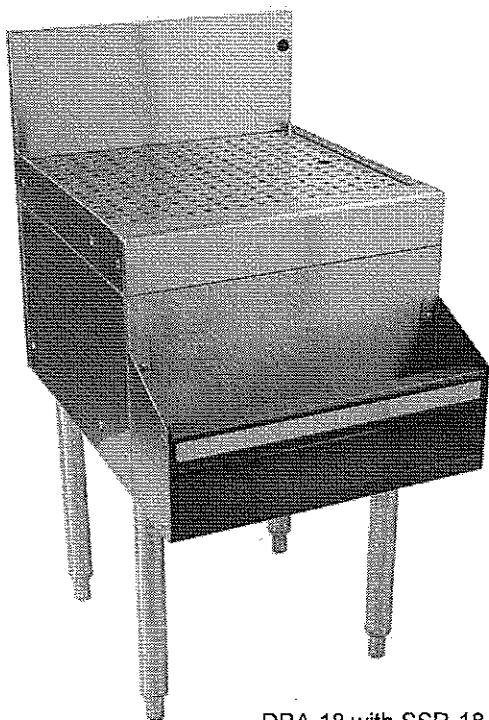
Model Number	Overall Length	Main Liner length	Bottle Well Location	Optional Cold Plate
CBB-30 L or R	30"	16"	Left or Right	N/A
CBB-36 L or R	36"	22"	Left or Right	CP10
CBB-42	42"	16"	Left and Right	N/A
CBB-42 L or R	42"	28"	Left or Right	CP10
CBB-48	48"	22"	Left and Right	CP10
CBB-48 L or R	48"	34"	Left or Right	CP10
CBB-54	54"	28"	Left and Right	CP10
CBB-60	60"	34"	Left and Right	CP10



Plan View

Plan view detailing two bottle well models
Model: CBB-48-CP10 shown





DBA-18 with SSR-18



Project: _____	ATA# _____
Item #: _____ Qty: _____	SIS# _____
Model #: _____	

Drainboards

See reverse side for model number key

Standard Features

- All stainless steel construction
- Adjustable stainless steel bullet feet
- Exclusive design with drain pan and separate perforated insert for better air circulation
- One piece, seamless top and backsplash featuring 1/4" radius corners for easy cleaning
- Standard models available in 6" incremental lengths from 12" to 48" (Custom sizes also available)
- 24" deep models provide a larger drainboard storage area not just a deck extension on the back of 19" deep model
- All storage is on a level plane
- A 4" by 4" by 6-1/2" high tubing chase is available. Specify model number "TC" as an accessory
- Also available with flat stainless steel fillerboard top in lieu of drainboard top. Substitute an "F" for the "D" in the model number when ordering

Specifications

Drain

- 1 1/2" I.P.S. Threaded drain will fit Dearborn part #8033 slipnut and part #W-573P washer

Legs

- 1-5/8" diameter, 16 gauge stainless steel
- Stainless steel bullet feet

Materials

- 20 gauge stainless steel

Glastender, Inc. • 5400 North Michigan Road • Saginaw, MI • 48604-9780
989.752.4275 • 800.748.0423 • Fax 989.752.4444
www.glastender.com

Specifications subject to change without notice. For current specifications please visit our website.

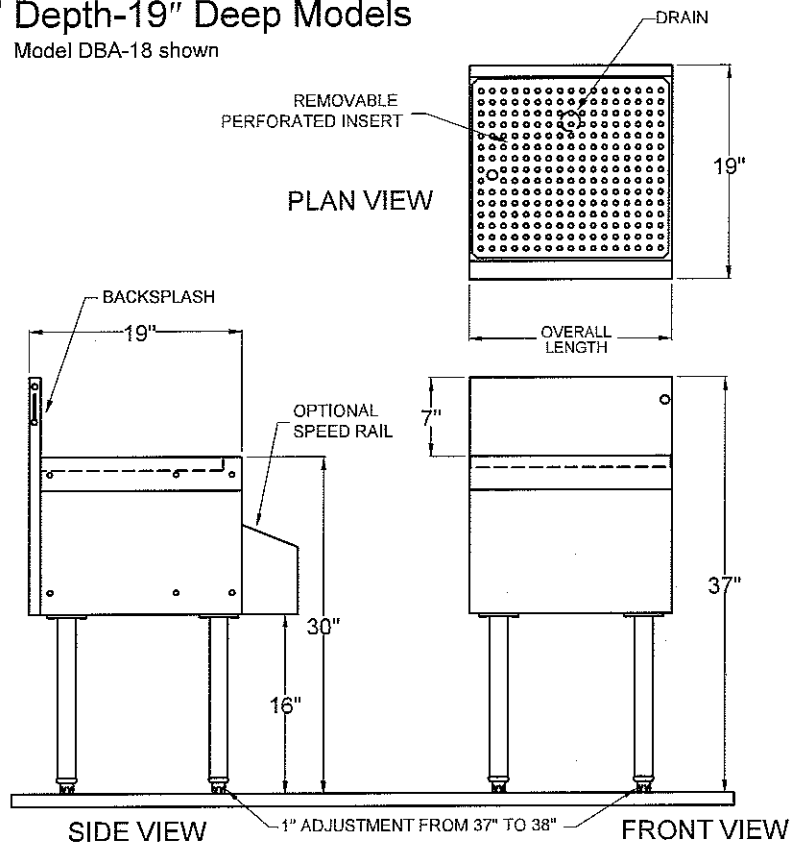
Approval/Notes:

Drainboards

Dimensional Information

"A" Depth-19" Deep Models

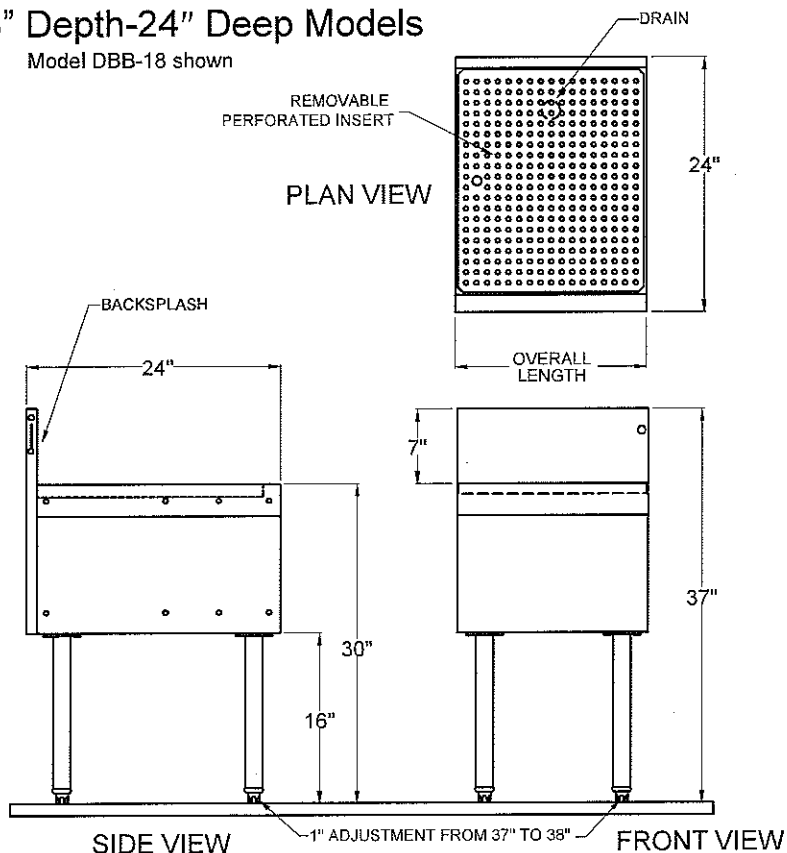
Model DBA-18 shown



Model Number	Overall Length
DBA-12	12"
DBA-18	18"
DBA-24	24"
DBA-30	30"
DBA-36	36"
DBA-42	42"
DBA-48	48"

"B" Depth-24" Deep Models

Model DBB-18 shown

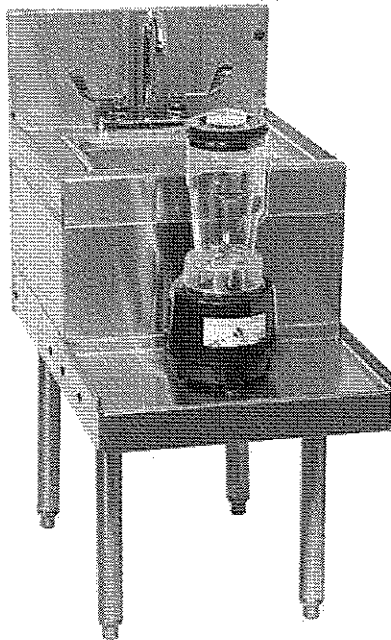


Model Number	Overall Length
DBB-12	12"
DBB-18	18"
DBB-24	24"
DBB-30	30"
DBB-36	36"
DBB-42	42"
DBB-48	48"



5400 North Michigan Road • Saginaw, MI • 48604-9780
 989.752.4275 • 800.748.0423 • Fax 989.752.4444
www.glastender.com

Printed in USA



BSB-18
(Blender not included)



Project: _____	AIA# _____
Item #: _____ Qty: _____	SIS# _____
Model #: _____	

Blender Stations

BSA-12, BSA-14, BSA-18, BSB-12, BSB-14, BSB-18

Standard Features

- All stainless steel construction
- One-piece, seamless top and backsplash
- CFC free foamed-in-place blender shelf for sound deadening
- Adjustable stainless steel bullet feet
- 9-1/4" by 11-1/2" by 6" deep sink bowl with hot and cold water gooseneck faucet
- Lift-out plastic perforated sink strainer
- 1" recessed work surface on 'BSB-__' models
- Blender shelf features radius interior corners for easy cleaning
- Power cord access hole with grommet located on front skirt, behind the blender
- Junction box for duplex GFI outlet mounted underneath blender shelf (outlet not included)

NOTE: Blender stations cannot have a speed rail mounted to them. Since speed rails are so common on underbar, blender stations come in 24" and 29" depths to align with underbar that has a speed rail.

Specifications

Drain

- 1-1/2" I.P.S. Threaded drain will fit Dearborn part #8033 slipnut and part #W-573P washer.

Faucet

- Deck mounted on 4" centers, accepts 3/8" sink leads, hot and cold water connections required (except model BSA-12)
- Model BSA-12: Backsplash mounted on 4" centers, hot and cold water connections required

Sink Bowl Dimensions

- 9-1/4" by 11-1/2" by 6" deep

Sink Strainer

- Perforated plastic

Legs

- 1-5/8" diameter, 16 gauge stainless steel
- Stainless steel bullet feet

Materials

- 20 gauge stainless steel



Power cord access hole in front skirt, behind blender

Glastender, Inc. • 5400 North Michigan Road • Saginaw, MI • 48604-9780
989.752.4275 • 800.748.0423 • Fax 989.752.4444
www.glastender.com

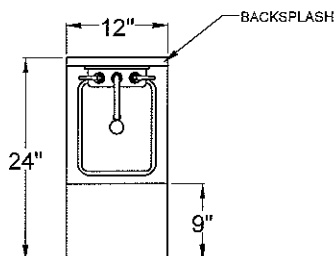
Specifications subject to change without notice. For current specifications please visit our website.

Approval/Notes:

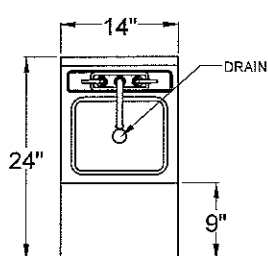
Blender Stations

Dimensional Information

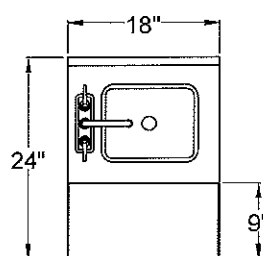
*NOTE: On BSA-18 model only, the faucet will be installed Left or Right to allow it to swivel into an adjacent ice bin for cleaning. If no side is specified, the faucet will be mounted on the Left side.



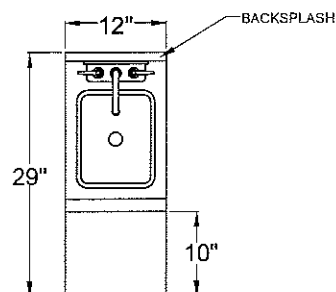
BSA-12



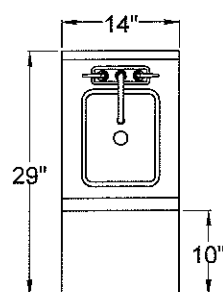
BSA-14



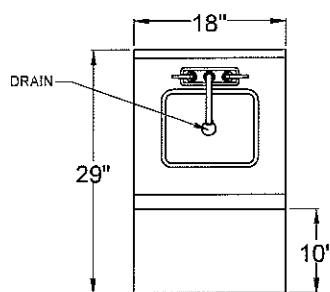
BSA-18



BSB-12

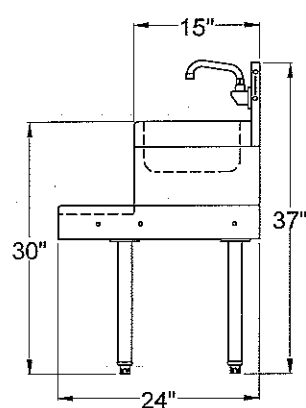


BSB-14

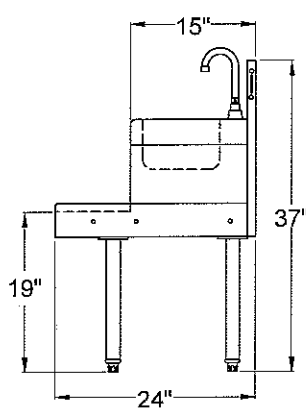


BSB-18

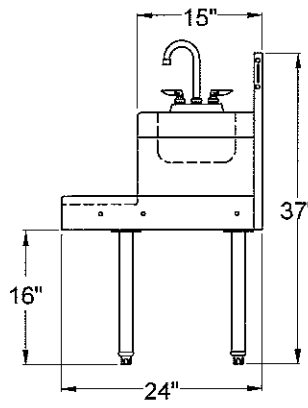
PLAN VIEWS



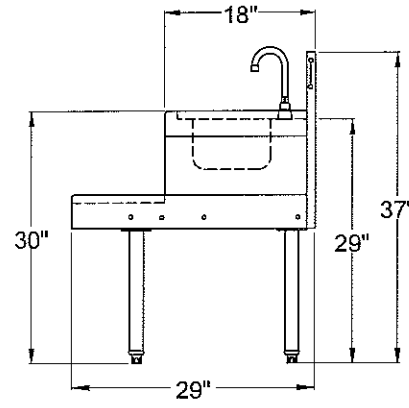
BSA-12



BSA-14



BSA-18



BSB-12*, BSB-14, BSB-18

*Note: BSB-12 faucet is mounted to backsplash.

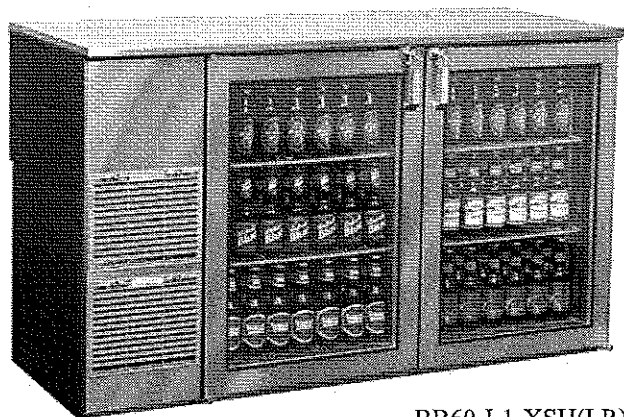
SIDE ELEVATIONS



5400 N Michigan Rd • Saginaw, MI • 48604-9780
989.752.4275 • 800.748.0423 • Fax 989.752.4444
www.glastender.com

Printed in USA

Glas tender®



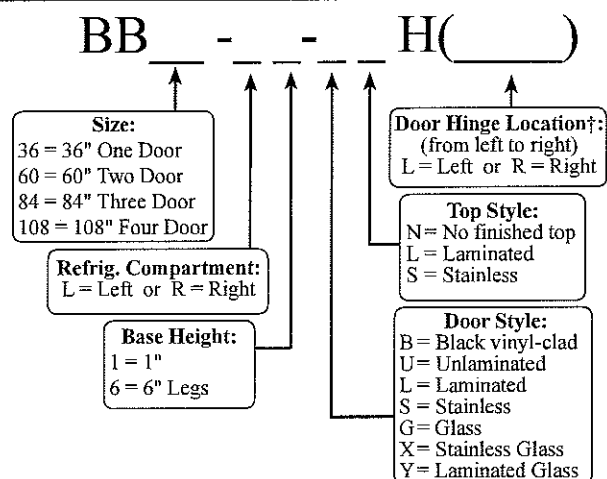
BB60-L1-XSH(LR)



NSF standard 7 listed for open food storage

Project: _____	AIA# _____
Item #: _____ Qty: _____	SIS# _____
Model #: _____	

Back Bar Coolers One, Two, Three and Four Door Self-Contained



† Specify hinge location for each door

Standard Features

- Solid door models meet 2008 energy efficiency standards
- Self-contained
- All stainless steel interior construction with radius interior corners for easy cleaning
- CFC free foamed-in-place insulation
- Galvanized steel sub-top
- Black vinyl-clad steel exterior front and sides
- Automatic defrost timer
- Stainless steel die cast handle
- Automatic condensate evaporator
- Leg sockets recessed into base
- 1/2" thick ABS plastic threshold scuff plate
- 180° swinging doors
- Six foot grounded cord and plug (exits at rear)
- Compressor compartment available on left or right side of unit

Specifications

Electrical

- 120V, 1 phase, 60 Hz
- Dedicated 15 amp circuit is required
- Includes a 6 foot grounded cord and plug which exits the back of refrigeration compartment

Refrigeration

- R134a

Operating Range

- 34° F to 40° F

Plumbing

- Automatic condensate evaporator. No drain connection required

Shelving

- Two adjustable coated shelves and one bottom coated rack per door included

Legs

- 1-5/8" diameter
- Stainless steel bullet feet

Materials

- 22 gauge stainless steel parts include: interior floor, walls, ceiling, front of cabinet, and evaporator housing
- 22 gauge black vinyl-clad parts include: sides, standard doors, and compressor compartment housing
- 22 gauge galvanized steel parts include: exterior sub-top and back
- 16 gauge stainless steel parts include: legs
- 16 gauge galvanized steel parts include: base and compressor compartment base plate
- 16 gauge zinc plated CR steel parts include: leg sockets
- 12 gauge stainless steel parts include: hinges, hinge brackets, and lock brackets

Glastender, Inc. • 5400 N Michigan Rd • Saginaw, MI • 48604-9780
989.752.4275 • 800.748.0423 • Fax 989.752.4444
www.glastender.com

Approval/Notes:

Specifications subject to change without notice. For current specifications please visit our website.