

HOOD INFORMATION

HOOD NO.	TAG	MODEL	LENGTH	MAX. COOKING TEMP.	TOTAL EXH. CFM	EXHAUST PLENUM RISER(S)				SUPPLY PLENUM RISER(S)				HOOD CONSTRUCTION	HOOD CONFIG.		
						WIDTH	LENG.	DIA.	CFM	S.P.	TOTAL SUP. CFM	WIDTH	LENG.		DIA.	CFM	S.P.
1	27	4824 VHB-G	4' 0.00'	700 Deg.	600			12"	600	-0.066'	0				304 SS 100%	ALONE	ALONE
2	46.1	5424 ND-2-ACSP-F	4' 4.00'	450 Deg.	802	9'	8'		802	-0.309'	642			430 SS Where Exposed	ALONE	ALONE	
3	46, Left	6624 ND-2-ACSP-F	9' 4.00'	450 Deg.	1727	10'	16'		1727	-0.392'	1433			430 SS Where Exposed	LEFT	ALONE	
4	46, Right	6624 ND-2-ACSP-F	9' 4.00'	450 Deg.	1727	10'	16'		1727	-0.392'	1433			430 SS Where Exposed	RIGHT	ALONE	

HOOD INFORMATION

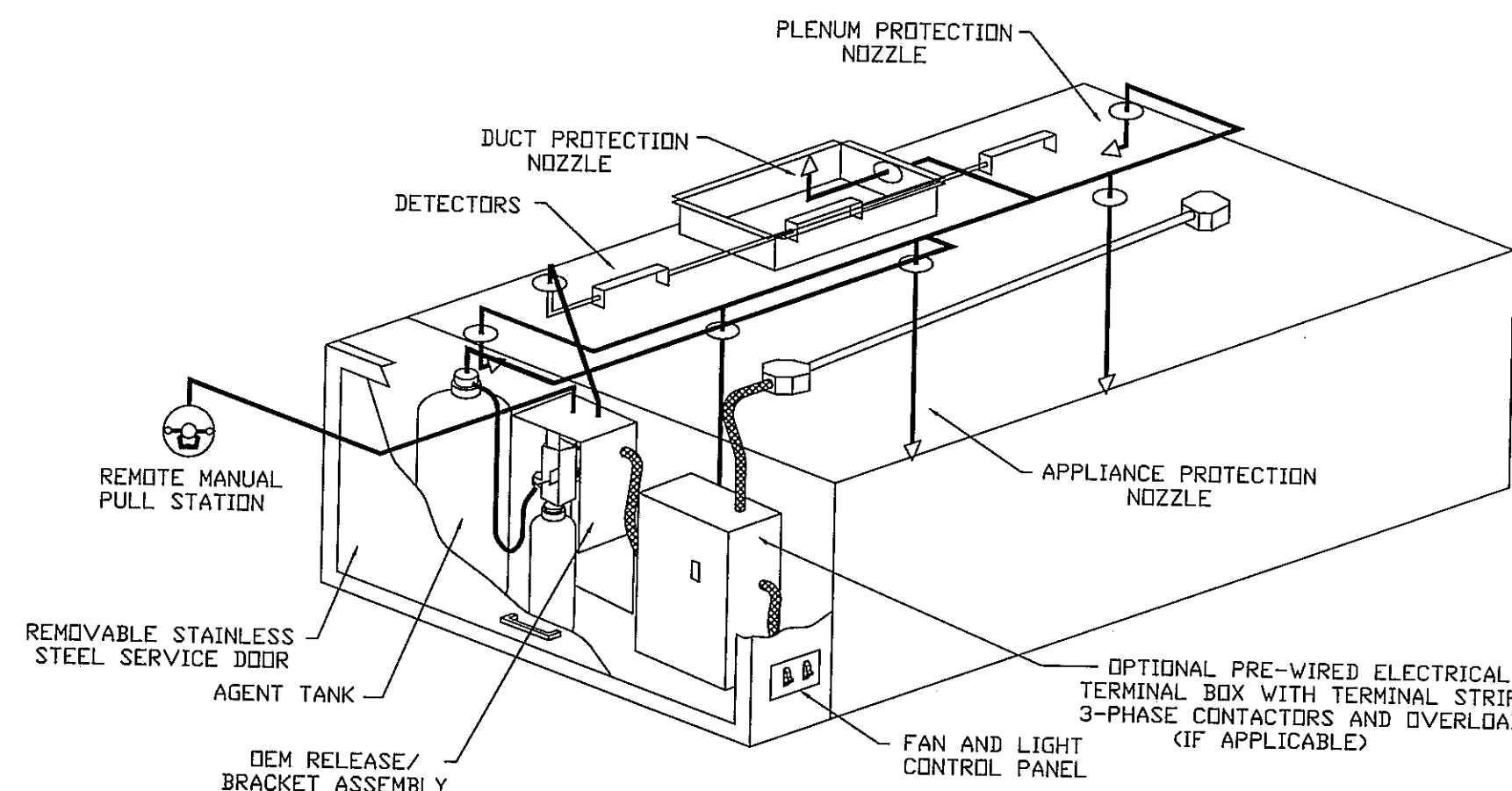
HOOD NO.	TYPE	FILTER(S)		LIGHT(S)		WIRE GUARD	LOCATION	UTILITY CABINET(S)		SWITCHES	FIRE SYSTEM PIPING	HOOD HANGING WGT
		QTY.	HEIGHT	QTY.	TYPE			TYPE	SIZE			
1				0							NO	224 LBS
2	SS Baffle with Handles	2	16"	2	Incandescent Light Flxt	NO					YES	385 LBS
3	SS Baffle with Handles	4	16"	5	Incandescent Light Flxt	NO	Left	Ansul R102	3.0	311110FP	1 Light 1 Fan	731 LBS
4	SS Baffle with Handles	4	16"	5	Incandescent Light Flxt	NO					YES	602 LBS

HOOD OPTIONS

HOOD NO.	OPTION
1	FIELD WRAPPER 42.00' High Front, Left, Right
2	FIELD WRAPPER 42.00' High Front, Left, Right BACKSPLASH 80.00' High X 52.00' Long 430 SS BACKSPLASH - OUTSIDE CORNER 80.00' High X 4.00' Leg Length 430 SS
3	FIELD WRAPPER 42.00' High Front, Left BACKSPLASH 80.00' High X 236.00' Long 430 SS BACKSPLASH - OUTSIDE CORNER 80.00' High X 4.00' Leg Length 430 SS
4	FIELD WRAPPER 42.00' High Front, Right

PERFORATED SUPPLY PLENUM(S)

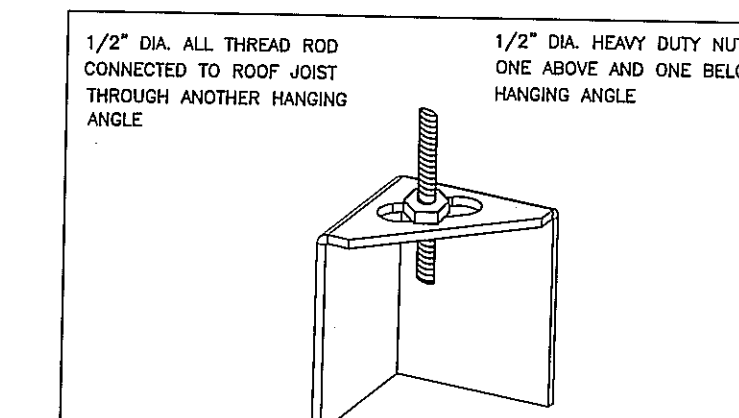
HOOD NO.	POS.	LENGTH	WIDTH	HEIGHT	TYPE	RISER(S)				
						WIDTH	LENG.	DIA.	CFM	S.P.
2	Front	52'	24'	6'	MUA	8"	24"	8"	642	0.276'
					AC			8"	112	0.040"
3	Front	124'	24'	6'	MUA	8"	26"	8"	716	0.269"
					MUA	8"	26"	8"	716	0.269"
					AC			8"	166	0.083"
					AC			8"	166	0.083"
4	Front	112'	24'	6'	MUA	8"	26"	8"	716	0.312"
					MUA	8"	26"	8"	716	0.312"
					AC			8"	166	0.083"
					AC			8"	166	0.083"



TYPICAL ANSUL R-102 SYSTEM LAYOUT

VERIFY CEILING HEIGHT

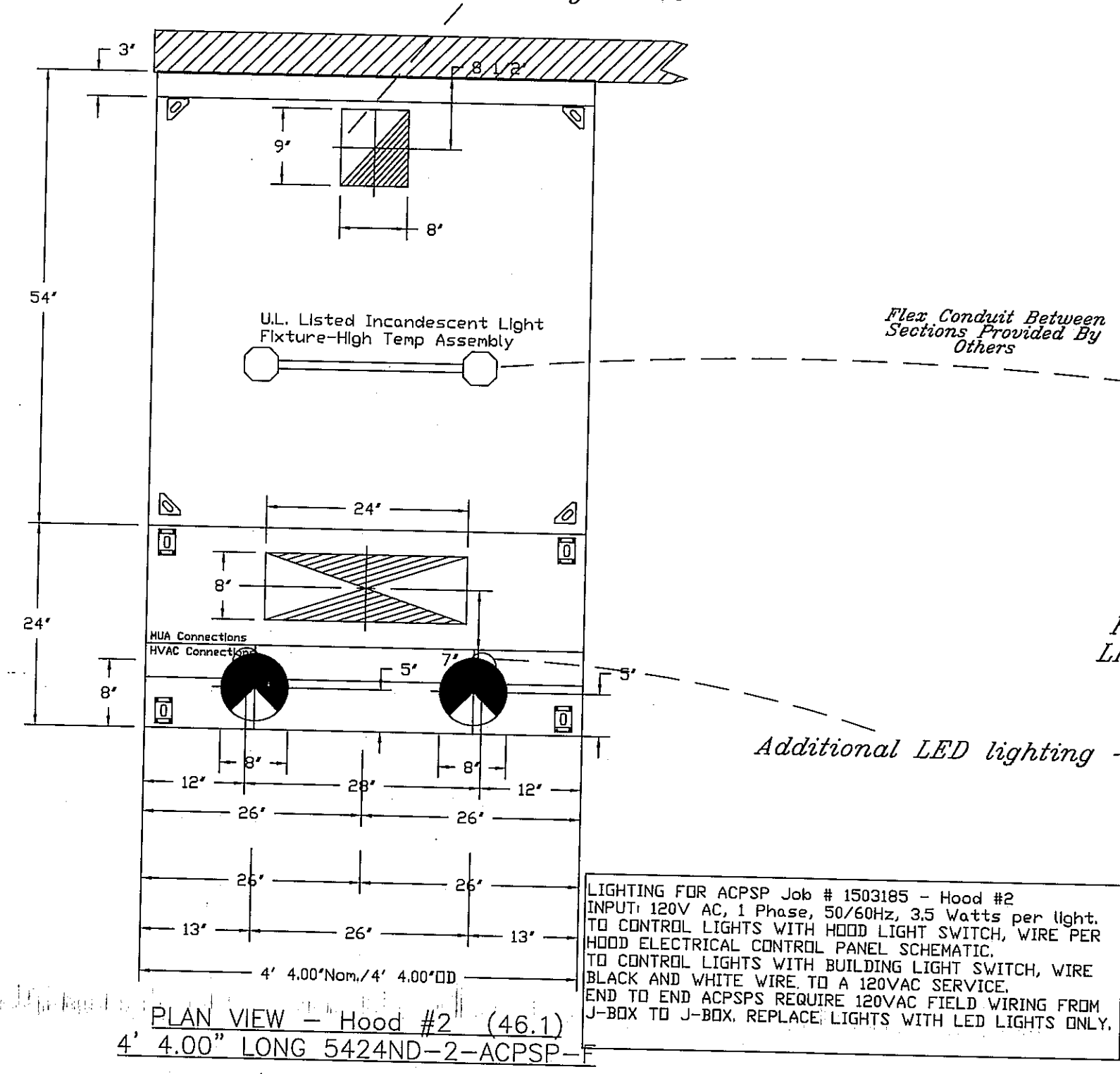
Height required to verify that the hood will fit and to size the enclosure panels



ND-2 HANGING ANGLE DETAIL

NOTE
IT IS RECOMMENDED NOT TO INSTALL HIGH VELOCITY DIFFUSERS OR HVAC RETURNS WITHIN TEN (10) FEET OF THE HOOD. PERFORATED DIFFUSERS ARE RECOMMENDED.

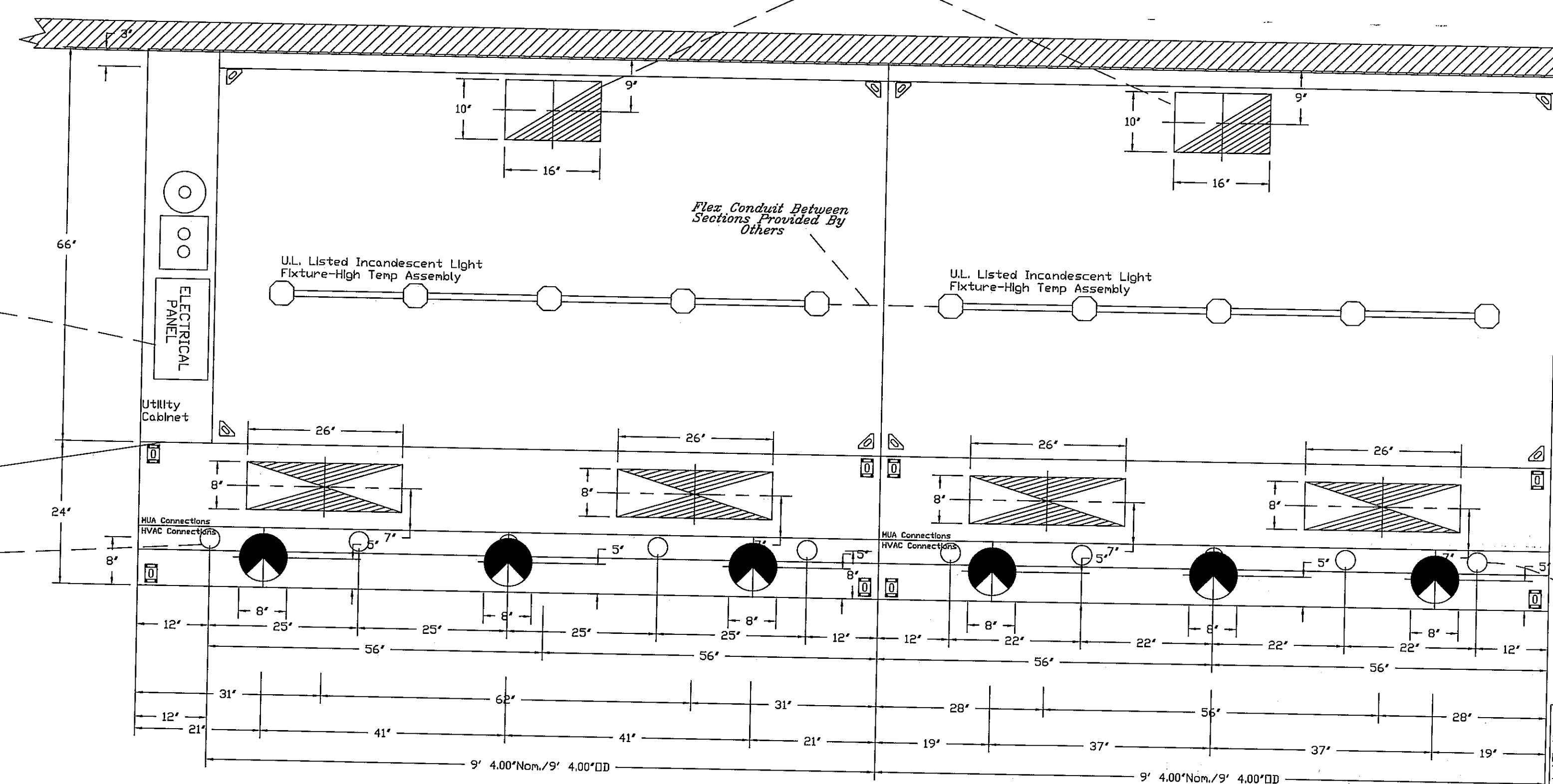
Temp. Probe. Provided by Captiveaire - Installed and Wired by others



PLAN VIEW - Hood #2 (46.1)
4' 4.00" LONG 5424ND-2-ACSP-F

ACSPSP ships loose for field installation

Temp. Probe. Provided by Captiveaire - Installed and Wired by others



PLAN VIEW - Hood #3 (46 Left)
9' 4.00" LONG 6624ND-2-ACSP-F

ACSPSP ships loose for field installation

PLAN VIEW - Hood #4 (46 Right)
9' 4.00" LONG 6624ND-2-ACSP-F

ACSPSP ships loose for field installation

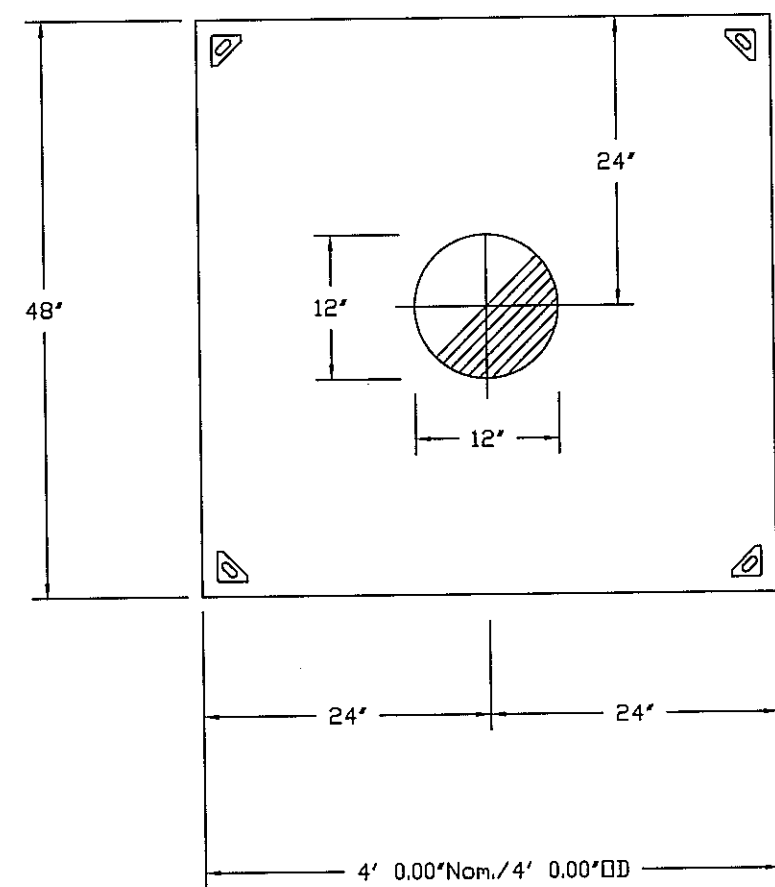
REVISIONS	
DESCRIPTION	DATE

CAPTIVEAIRE
Blue Ridge
www.captiveaire.com
607 5th St. NW, Hickory, NC, 28601 PHONE: (828) 324-4413 FAX: (819) 227-5993 EMAIL: rep16@captiveaire.com

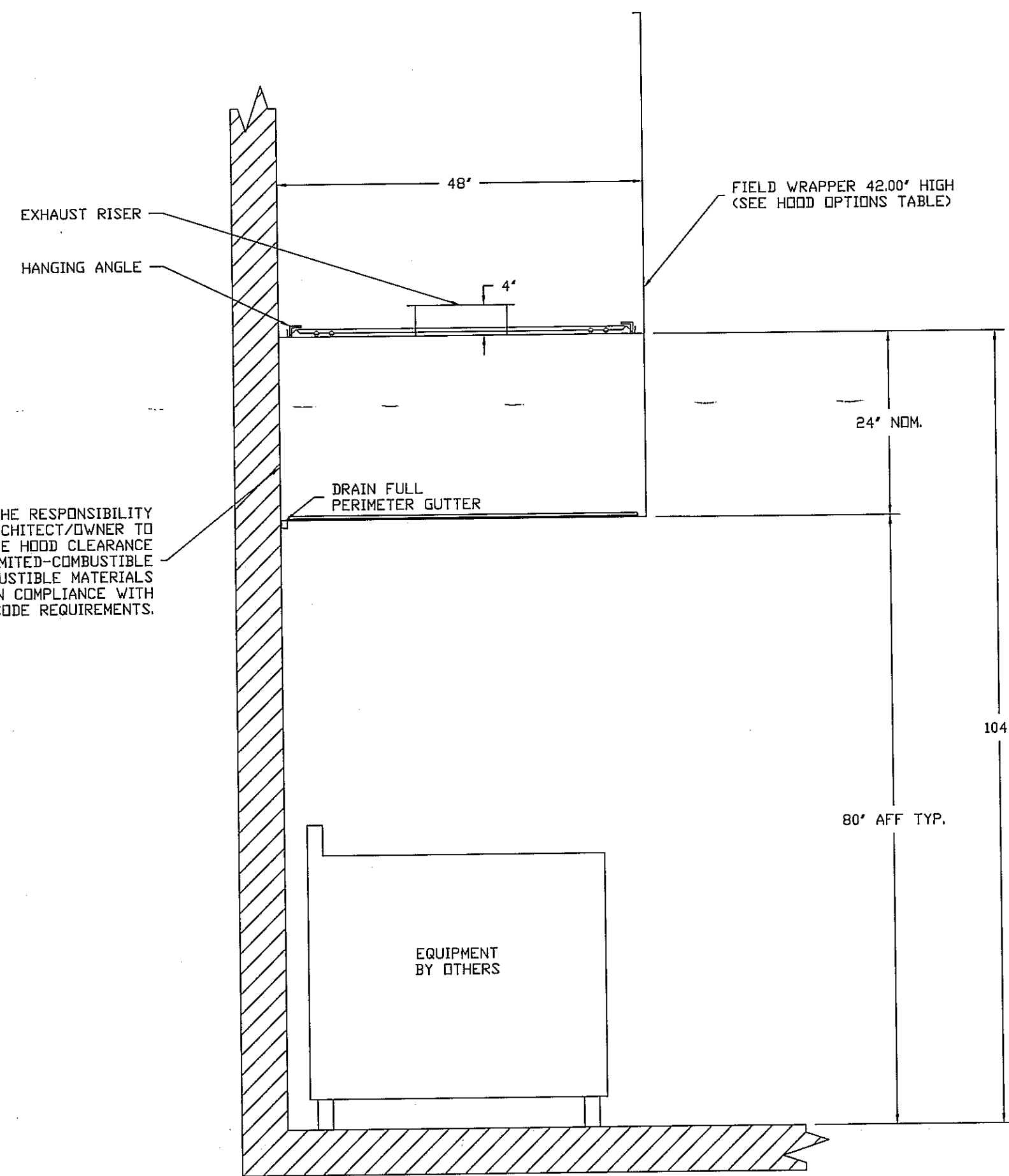
Mellow Mushroom, Spring TX 2
SPRING, TX

DATE: 3/1/2012
DWG.#: 1503185
DRAWN BY: MHB - 16
SCALE: 3/4" = 1'-0"
MASTER DRAWING

SHEET NO. 1



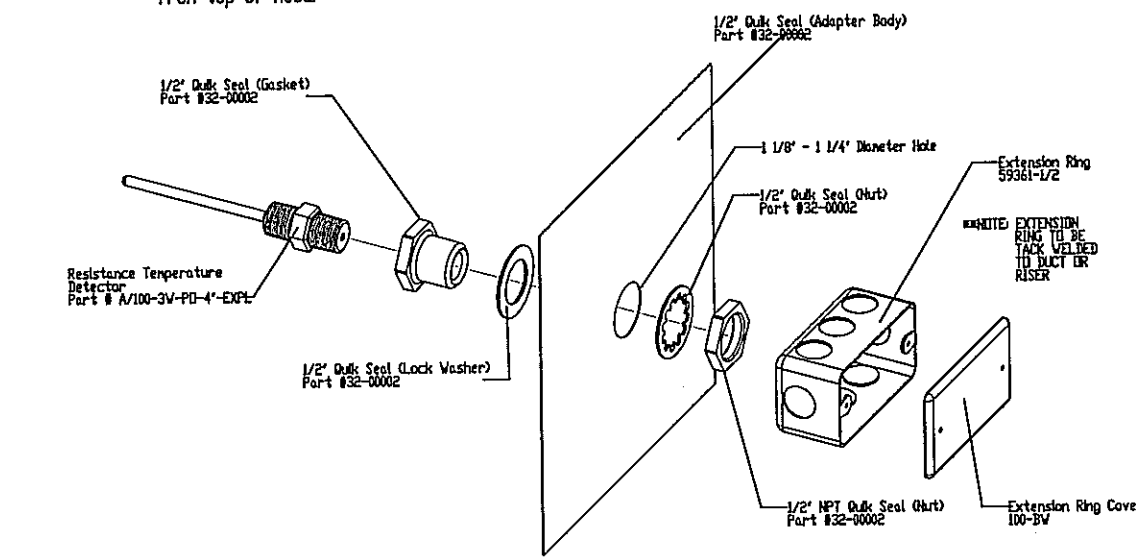
PLAN VIEW - Hood #1 (27)
4' 0.00" LONG 4824VHB-G



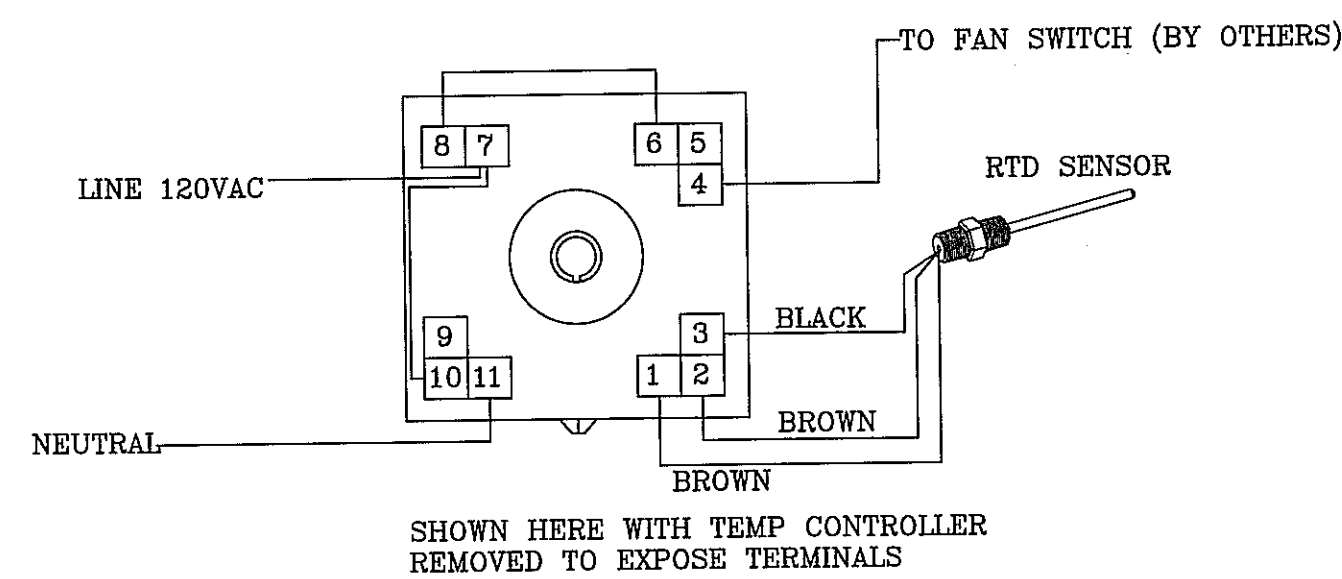
SECTION VIEW - MODEL 4824VHB-G
HOOD - #1 (27)

RTD SENSOR INSTALLATION DETAIL

NOTES: One RTD per Exhaust Riser
RTD has 3 wires that will need to be field wired to temp controller
RTD will be factory installed if exhaust risers are factory installed
If RTD is to be field installed it is to be installed no further than 4' from top of hood.



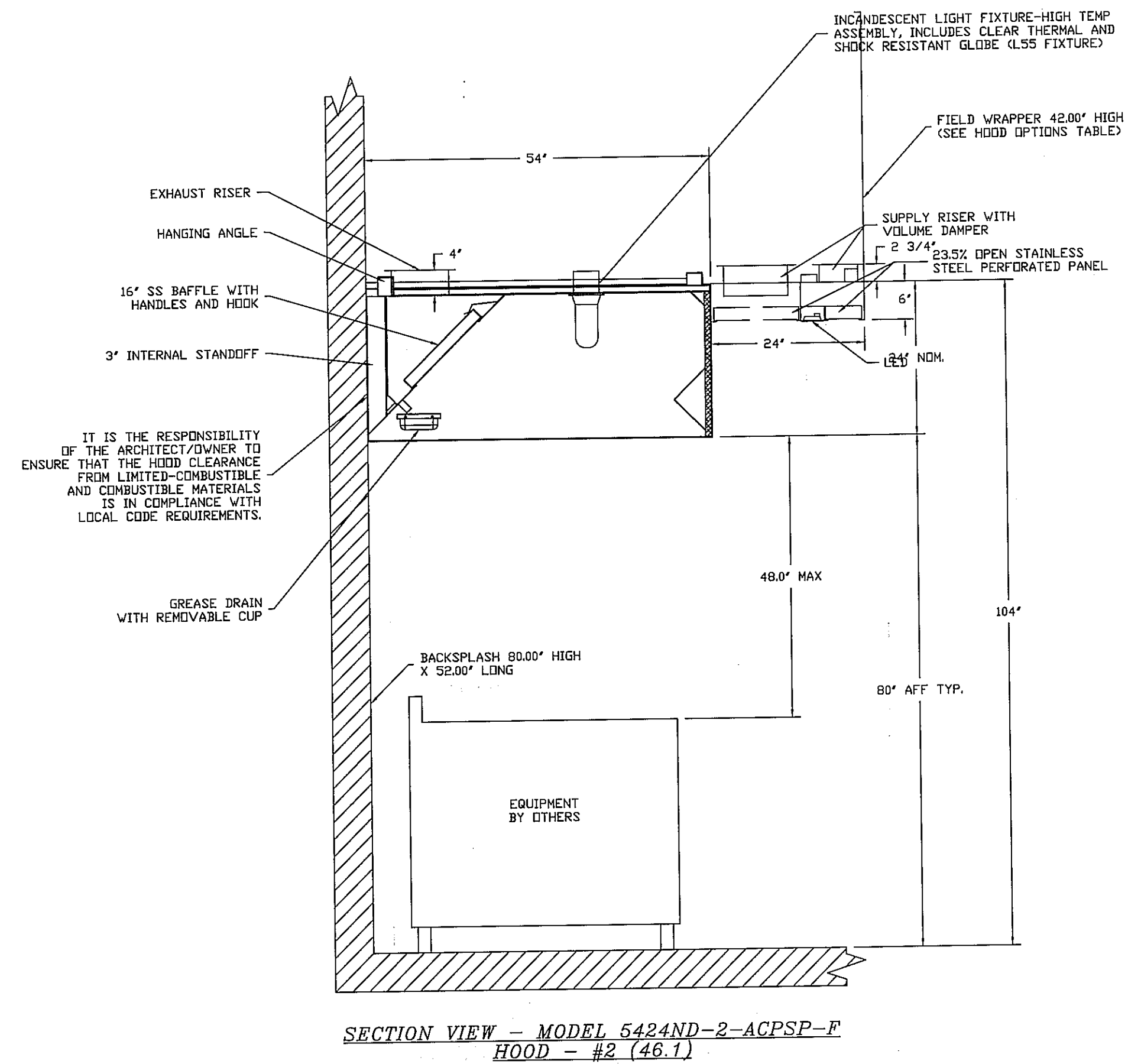
DUCT STAT WIRING FOR FAN SWITCH OVERRIDE
TEMPERATURE CONTROLLER BASE



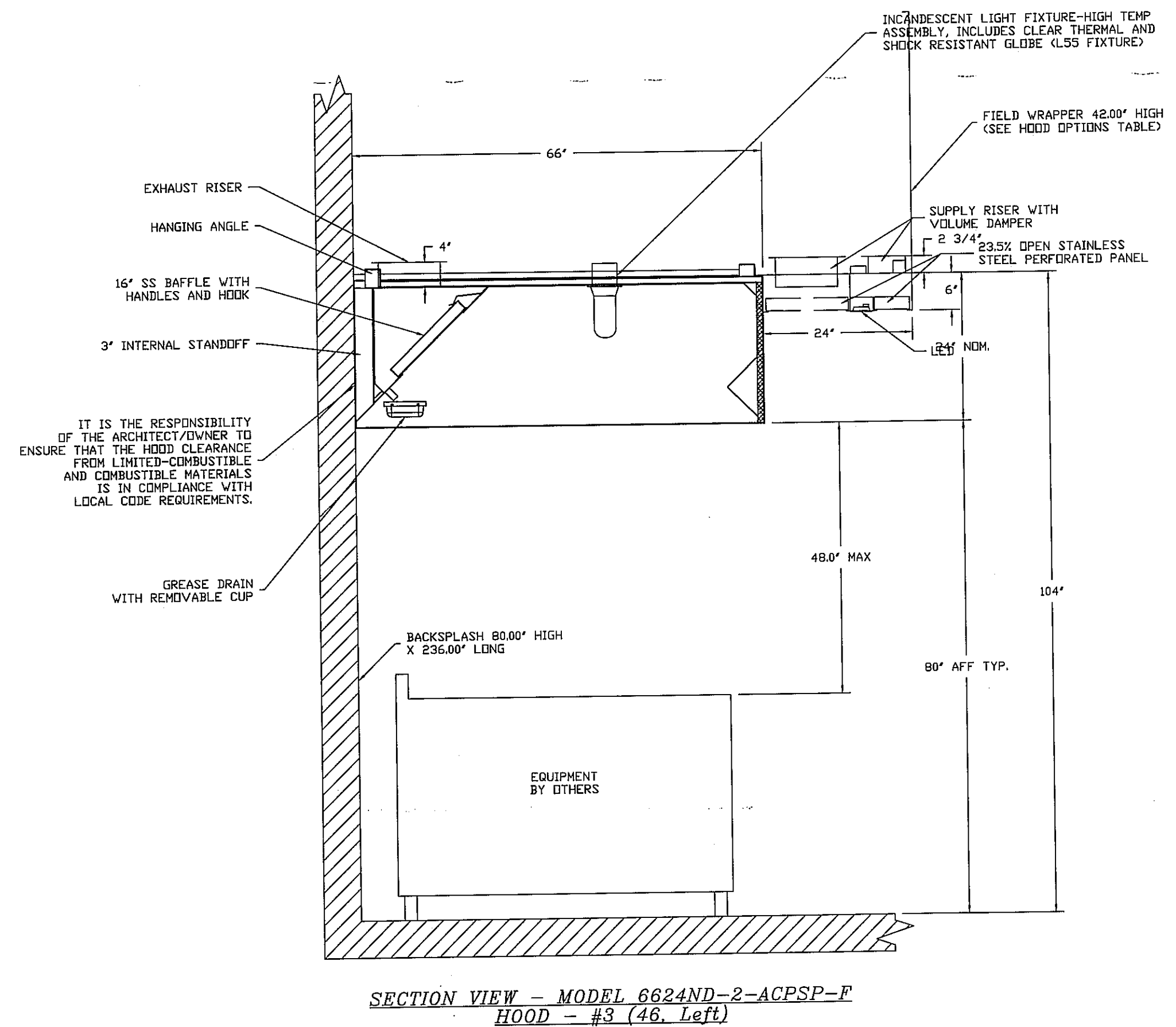
The temperature controller contacts are rated for one Amp so motor starters or contactors must be used even for fractional horsepower motors. If more than one RTD temperature sensor/controller set is used for one exhaust fan, terminals 7, 11 and 4 are paralleled on the controllers. Each RTD temperature sensor is wired to its own separate temperature controller.

ELECTRICIAN NOTES 1

All Hood/Fan/EMS/UDS/PCU electrical connections and interconnections to be provided and installed by Electrician. Electrician to provide, install, and land wiring between hood lights, hood temp sensors, remote Ansul system microswitches, and any other component requiring an electrical connection to the Captive-Aire electrical package. Failure by the Electrician to make ALL required electrical connections and interconnections will result in the electrical controls not working properly. Any loss or failed test as a result of electrical controls not working properly is the responsibility of the Electrician. Light bulbs for kitchen hoods to be provided and installed by electrician.



SECTION VIEW - MODEL 5424ND-2-ACPSP-F
HOOD - #2 (46.1)



SECTION VIEW - MODEL 6624ND-2-ACPSP-F
HOOD - #3 (46. Left)

REVISIONS	
DESCRIPTION	DATE

CAPTIVE
www.captiveaire.com
Blue Ridge

Mellow Mushroom, Spring TX 2
SPRING, TX

DATE: 3/1/2012

DWG.#:
1503185

DRAWN BY: MHB - 16

SCALE:
3/4" = 1'-0"

MASTER DRAWING

SHEET NO.

2

607 5th St. NW, Hickory, NC, 28601 PHONE: (828) 324-4413 FAX: (818) 327-5989 EMAIL: reg1@captivair.com

EXHAUST FAN INFORMATION

FAN UNIT NO.	FAN UNIT MODEL #	MODEL	TAG	CFM	ESP.	RPM	H.P.	Ø	VOLT	FLA	DISCHARGE VELOCITY	WEIGHT (LBS.)
1	DU33HFA	DU33HFA	27	600	0.500	1212	0.333	1	115	4.1		59.36
2	USI245	USI245	46/46.1	4256	2.500	1145	5.000	3	208	14.1	1163 FPM	469.40

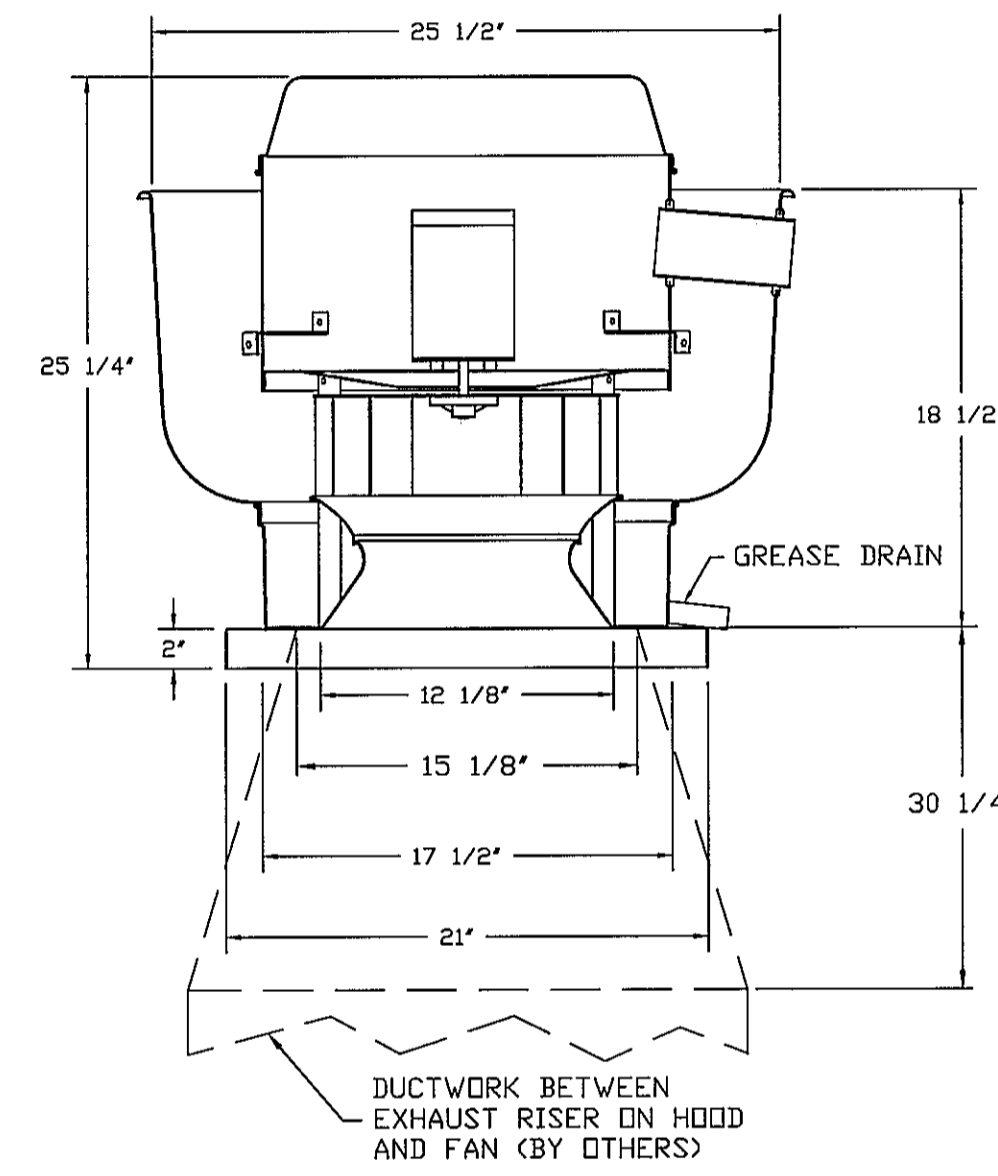
FAN OPTIONS

FAN UNIT NO.	OPTION (Qty. - Descr.)
1	1 - Grease Box
2	1 - Extra Set of Belts
	1 - Exhaust Fan Grease Cup (ACME Utility Set)
	1 - Utility Set - Spring Vibration Isolators - B120 Thru B124 / Equivalent Sized Utility Set - Indoor/Outdoor use.
3	1 - Extra Set of Belts
	1 - 8 Ton 2 Circuit (3/5) Modular Packaged Cooling Option for Size 2 MUA (2,900 to 4,800 cfm), 208V/230V, 3 phase. Cooling Thermostat or Programmable Stat Required for Proper Operation.
	1 - Full Crating For Untempered Fans
	1 - Insulated Blower Section Size 1-2 Commercial
	1 - Mod Package Unit AC Controls for Untempered Fans
	1 - Condenser Support for Size 2 Mod Package Unit

CURB ASSEMBLIES

NO.	DN FAN	WEIGHT	ITEM	SIZE
1	# 1	34 LBS	Curb	19.500"W x 19.500"L x 23.000"H Vented Hinged
2	# 2	30 LBS	Curb	4.000"W x 48.000"L x 6.000"H
3	# 3	42 LBS	Curb	31.000"W x 31.000"L x 8.000"H
	# 3		Rail	6.000"W x 31.000"L x 8.000"H Along Width,
	# 3		Rail	6.000"W x 31.000"L x 8.000"H Along Width,

FAN #1 DU33HFA - EXHAUST FAN (27)



FEATURES:

- ROOF MOUNTED FANS
- RESTAURANT MODEL
- UL705 AND UL762
- VARIABLE SPEED CONTROL
- INTERNAL WIRING
- WEATHERPROOF DISCONNECT
- THERMAL OVERLOAD PROTECTION (SINGLE PHASE)
- HIGH HEAT OPERATION 300°F (149°C)
- GREASE CLASSIFICATION TESTING

NORMAL TEMPERATURE TEST

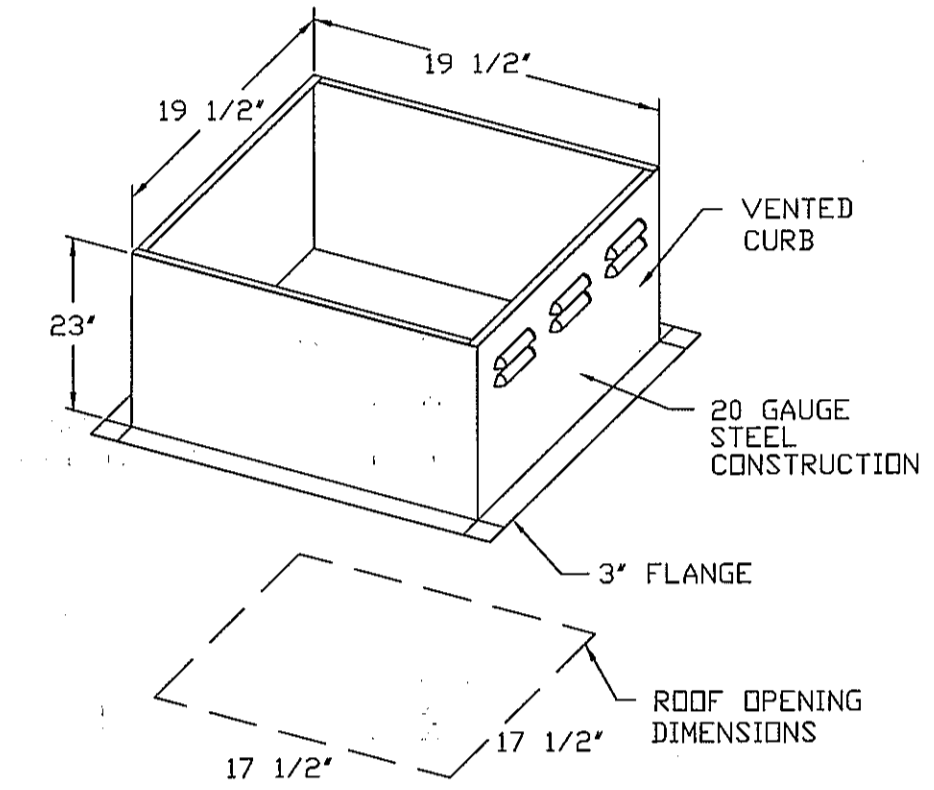
EXHAUST FAN MUST OPERATE CONTINUOUSLY WHILE EXHAUSTING AIR AT 300°F (149°C) UNTIL ALL FAN PARTS HAVE REACHED THERMAL EQUILIBRIUM, AND WITHOUT ANY DETERIORATING EFFECTS TO THE FAN WHICH WOULD CAUSE UNSAFE OPERATION.

ABNORMAL FLARE-UP TEST

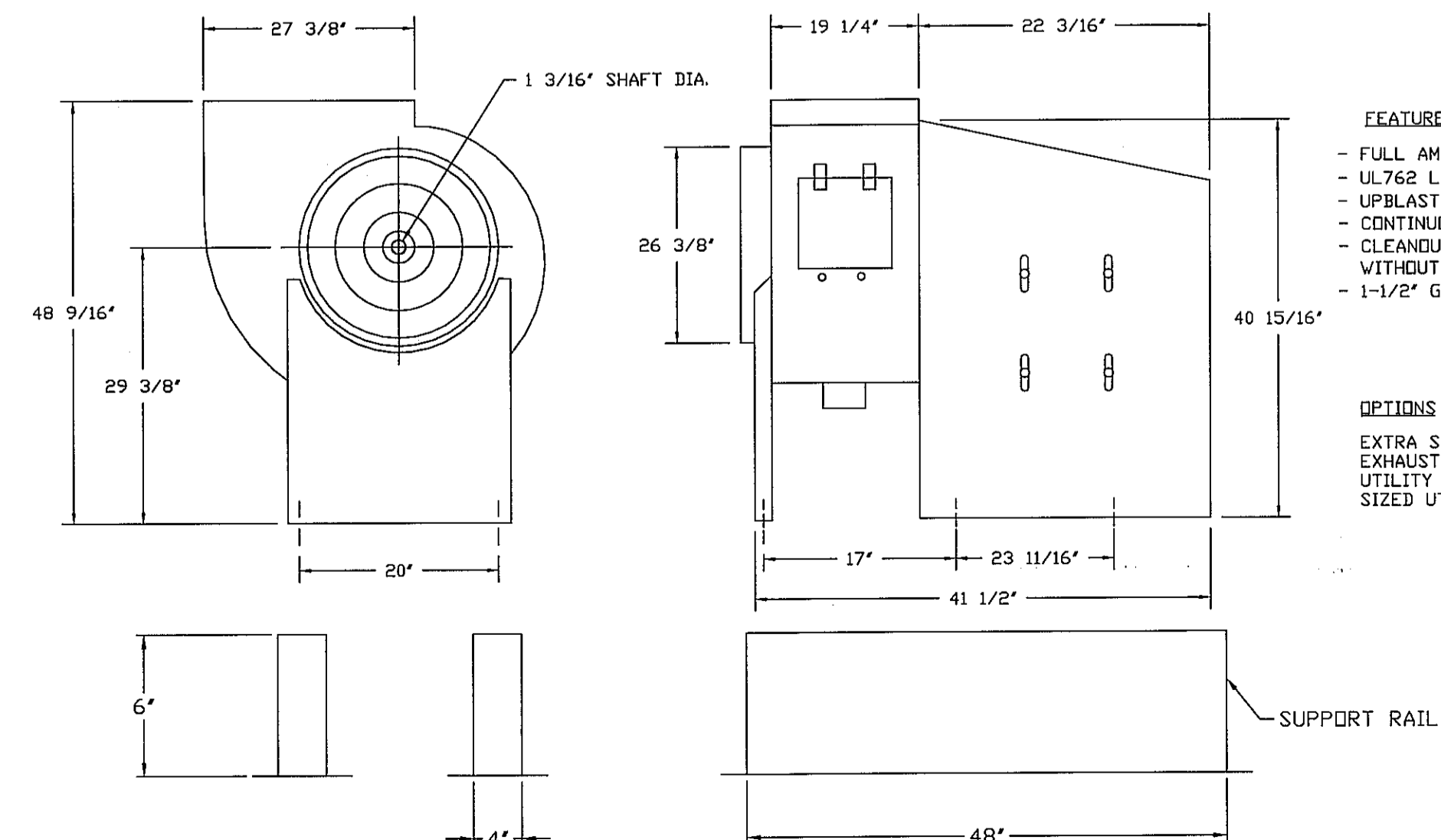
EXHAUST FAN MUST OPERATE CONTINUOUSLY WHILE EXHAUSTING BURNING GREASE VAPORS AT 600°F (316°C) FOR A PERIOD OF 15 MINUTES WITHOUT THE FAN BECOMING DAMAGED TO ANY EXTENT THAT COULD CAUSE AN UNSAFE CONDITION.

OPTIONS

- GREASE BOX



FAN #2 USI245 - EXHAUST FAN (46/46.1)



FEATURES:

- FULL AMCA CLASS 1 OPERATION
- UL762 LISTED FOR RESTAURANT DUTY
- UPBLAST DISCHARGE DIRECTS AIR AWAY FROM FLOOR
- CONTINUOUSLY WELDED HOUSING
- CLEANOUT DOOR WITH LATCHES PROVIDE EASY ACCESS WITHOUT TOOLS
- 1-1/2" GREASE DRAIN WILL NOT CLOG

OPTIONS

- EXTRA SET OF BELTS
- EXHAUST FAN GREASE CUP (ACME UTILITY SET)
- UTILITY SET - SPRING VIBRATION ISOLATORS - B120 THRU B124 / EQUIVALENT SIZED UTILITY SET - INDOOR/OUTDOOR USE.

REVISIONS	
DESCRIPTION	DATE



www.captiveaire.com

Blue Ridge
607 5th St. NW, Hickory, NC, 28601 PHONE: (828) 324-4413 FAX: (819) 227-5993 EMAIL: reg16@captiveaire.com

Mellow Mushroom, Spring TX 2
SPRING, TX

DATE: 3/1/2012

DWG.#:
1503185

DRAWN BY: MHB - 16

SCALE:
3/4" = 1'-0"

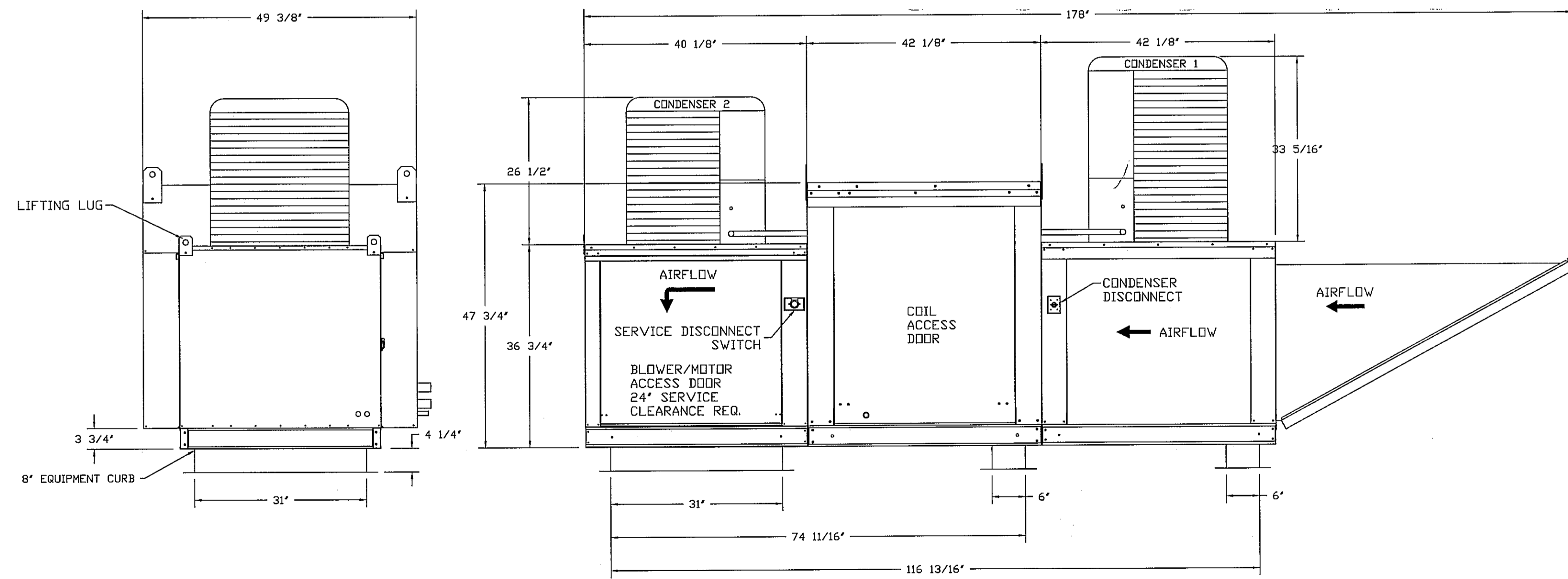
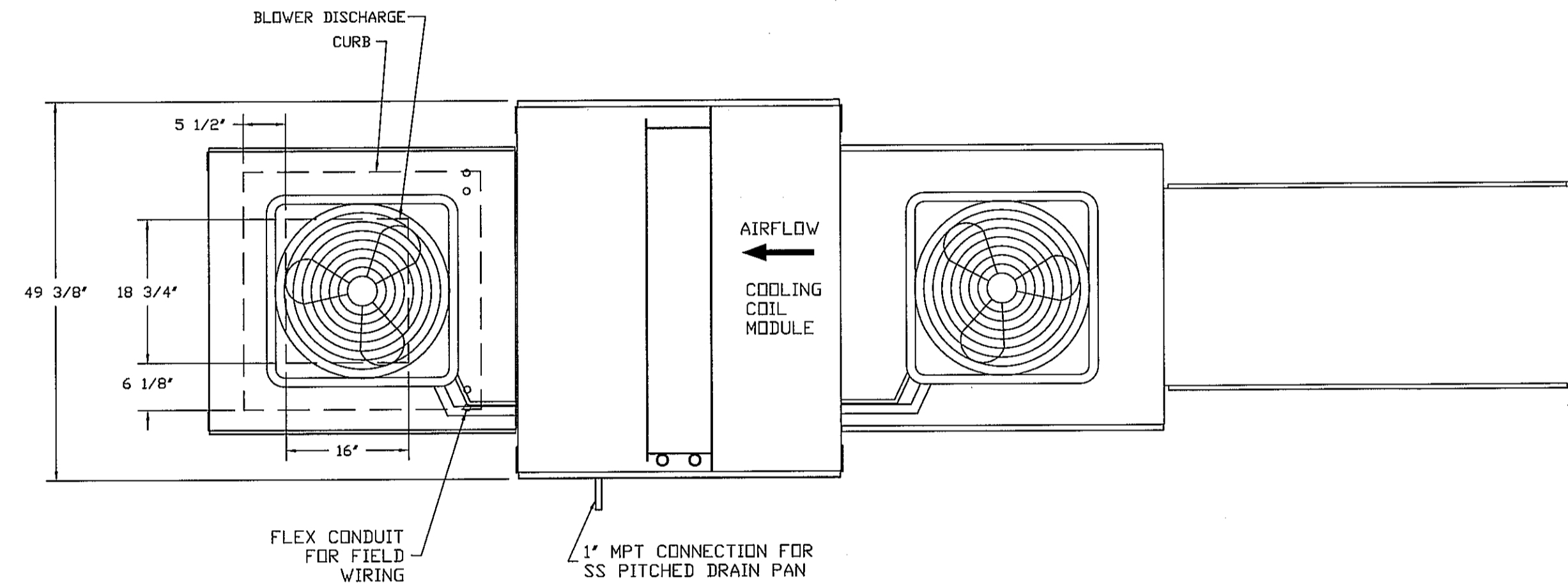
MASTER DRAWING

SHEET NO.

HEATER/MUA FAN INFORMATION

FAN UNIT NO.	FAN UNIT MODEL #	BLOWER	HOUSING	TAG	CFM	ESP.	RPM	H.P.	Ø	VOLTS	FLA	COOLING COIL ENTERING DB TEMP.	COOLING COIL ENTERING WB TEMP.	COOLING COIL LEAVING DB TEMP.	COOLING COIL LEAVING WB TEMP.	COOLING COIL TOTAL CAPACITY	COOLING COIL SENSIBLE CAPACITY	COOLING COIL LATENT CAPACITY	WEIGHT (LBS.)
3	A2-G15	G15-PB	A2		3508	0.600	663	1.500	3	208	4.7	95.0°F	78.0°F	77.0°F	72.0°F	94.7 MBH	66.9 MBH	27.8 MBH	1372.25

- FAN #3 A2-G15 - SUPPLY FAN
- UNTEMPERED SUPPLY UNIT WITH 15" BLOWER IN SIZE #2 HOUSING
 - INTAKE HOOD WITH EZ FILTERS
 - DOWN DISCHARGE - AIR FLOW RIGHT -> LEFT
 - EXTRA SET OF V-BELTS. ONLY TO BE ORDERED AS FAN OPTION AT TIME FAN IS ORDERED.
 - 8 TON, DUAL CIRCUIT (3/5) MODULAR PACKAGED COOLING OPTION FOR SIZE 2 MODULAR PACKAGED UNIT. INCLUDES CONDENSER, DX COIL, FILTER/DRYER KIT, THERMAL EXPANSION VALVE, R410A REFRIGERANT, AND REFRIGERANT PIPING. (2,900 TO 4,800 CFM) NOT BUILT WITH OPPOSITE SIDE CONTROLS OR OPPOSITE AIRFLOW DIRECTION. CONDENSERS REQUIRE SEPARATE 208V, 3 PHASE POWER SUPPLY. COIL = SE21101D
 - FULL CRATING FOR UNTEMPERED FANS FOR SHIPPING.
 - INSULATED BLOWER HOUSING SIZES 1-2 COMMERCIAL MODULAR
 - CONTROL PACKAGE FOR MOD PACKAGE UNIT COOLING ONLY UNIT. INCLUDES AIRFLOW PROVING SWITCH, 2 STAGE THERMOSTAT AND TERMINAL BLOCKS.
 - SUPPORT SHELL FOR SIZE 2 MODULAR PACKAGE UNIT. INCLUDES CONTROL VESTIBULE. INCLUDES CONDENSER SUPPORTS. DOES NOT INCLUDE RETURN AIR OR INLET AIR DAMPER.



ROOF OPENING 2" SMALLER THEN CURB DIMENSION.

CONDENSER DETAILS

CONDENSER NO.	TONNAGE	VOLTAGE	PHASE	FREQUENCY	MCA	RLA	MAX. FUSE SIZE	MIN. WIRE SIZE
1	3	208-230	3 PHASE	60 Hz	14.5 Amps	11.9 Amps	20 Amps	14 GA
2	5	208-230	3 PHASE	60 Hz	21.4 Amps	17.4 Amps	30 Amps	12 GA

AirHandler Wiring	JOB NAME	DATE
	Mellow Mushroom, Spring TX 2	3/1/2012
DRAWING NUMBER	JOB NUMBER	MODEL
A1503185-3	1503185	A2-G15

ATTENTION ELECTRICIAN
DROP FEED DISCONNECT CONNECTION IS FACTORY SUPPLIED
CONNECT POWER TO THE DROP

Installed Options

Condenser Wiring

Component Identification

Label	Description	Location
MT-01	Supply motor	(2)
PS-02	BDP-106-313 AFS	(17)
SV-01	Main disconnect switch (2)	
SV-02	40 Amp Rotary Disconnect(15X18)	
TR-01	Power transformer(40va)(3)	
TR-05	Cooling Transformer(40va)(4)	
TS-07	2-Stage Thermostat	(17)

WIRE COLOR

--- DENOTES FIELD WIRING
- - - - DENOTES INTERNAL WIRING

WIRE COLOR
BK - BLACK YW - YELLOW
BL - BLUE GR - GREEN
BR - BROWN CY - GRAY
OR - ORANGE PR - PURPLE
RD - RED PK - PINK
WH - WHITE

REVISIONS	
DESCRIPTION	DATE



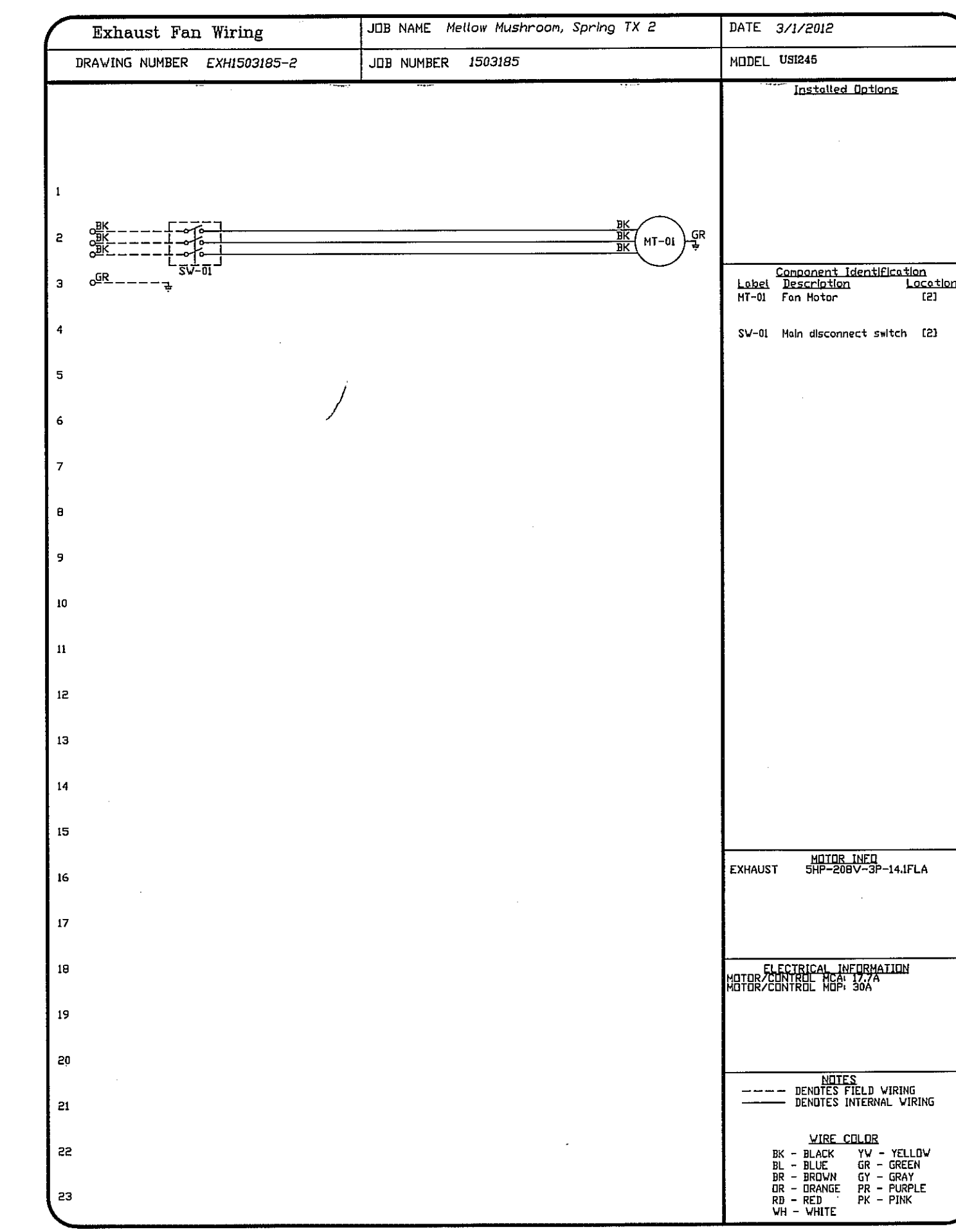
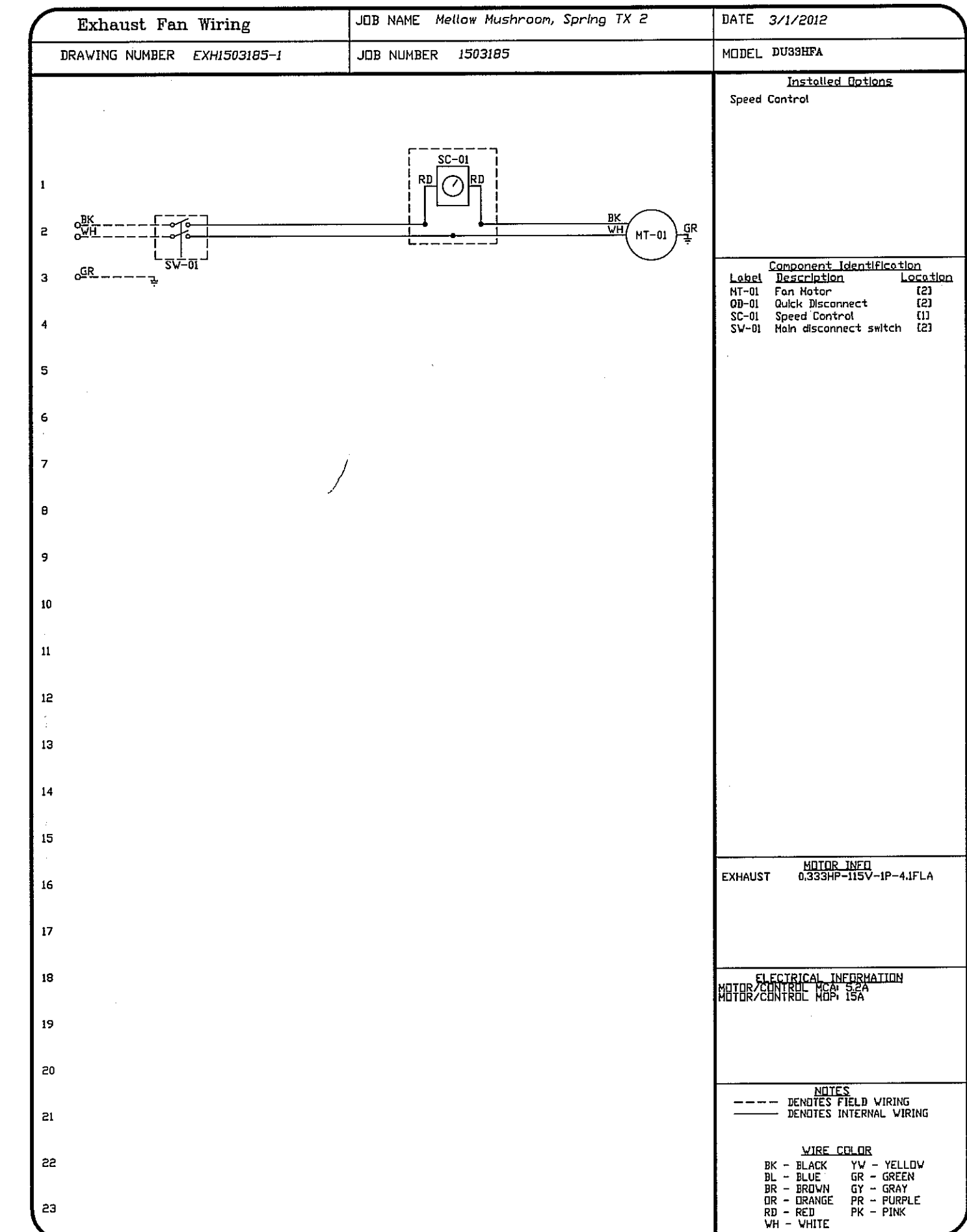
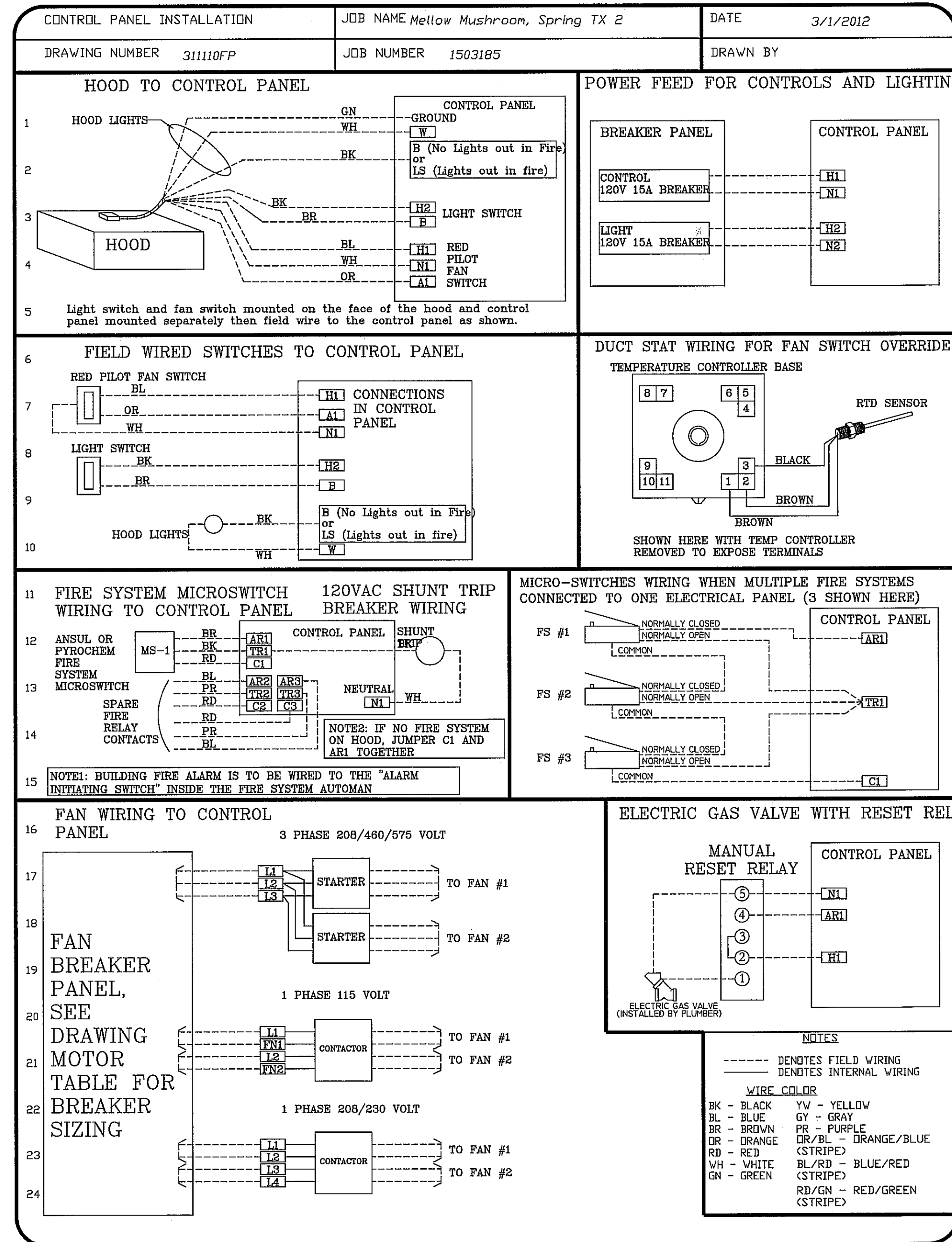
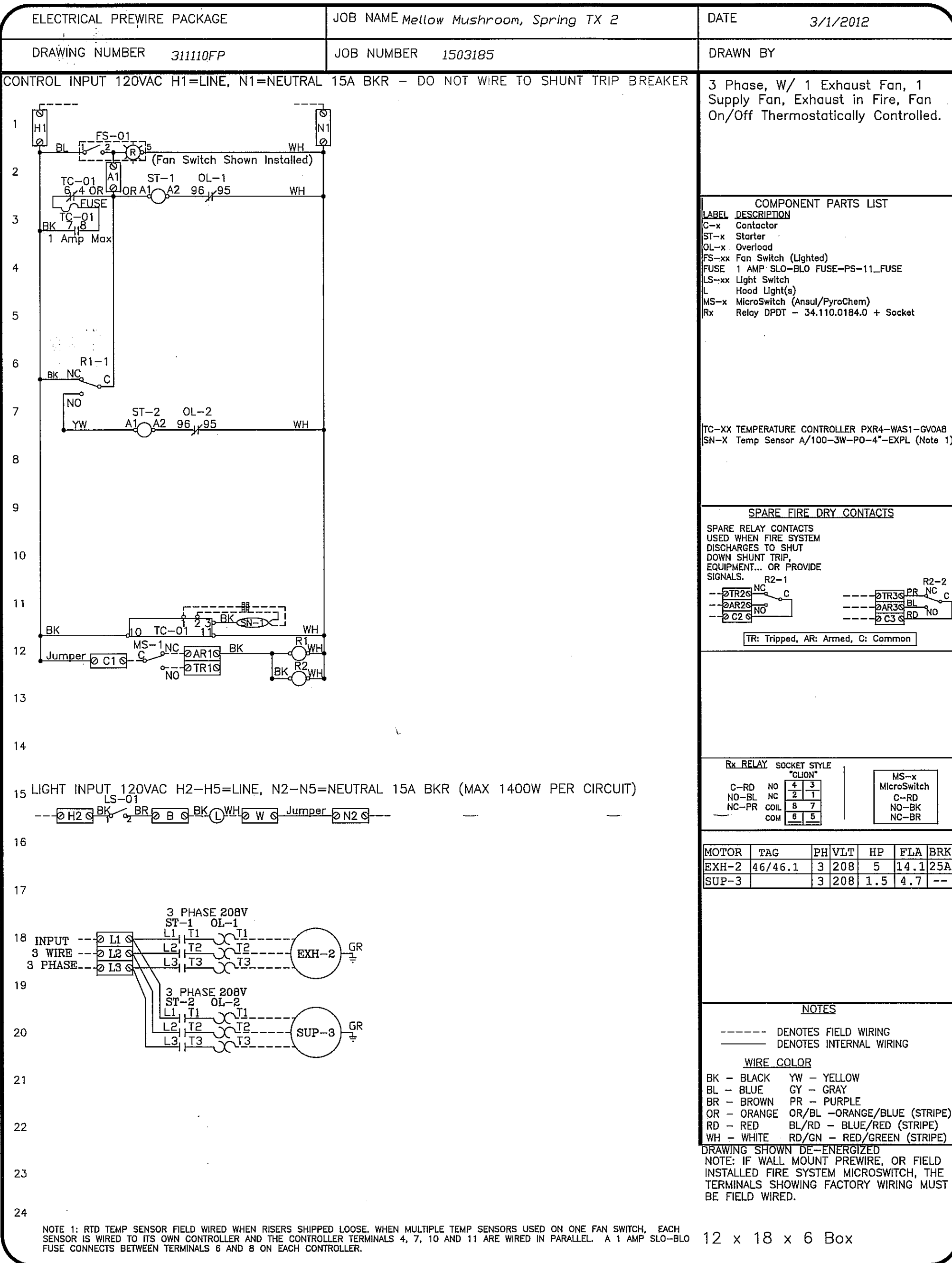
Mellow Mushroom, Spring TX 2
SPRING, TX

DATE: 3/1/2012
DWG.#: 1503185
DRAWN BY: MHB - 16
SCALE: 3/4" = 1'-0"
MASTER DRAWING

SHEET NO. 4

ELECTRICAL PACKAGES

NO.	TAG	PACKAGE #	LOCATION	SWITCHES		ROOFTOP STARTERS	OPTION	FANS CONTROLLED				
				LOCATION	QUANTITY			TYPE	#	H.P.	VOLT	FLA
1		311110FP	Utility Cabinet Left	Utility Cabinet Left	1 Light		Exhaust On In Fire, Fans On/Dff Thermostatically Controlled	Exhaust	3	5.000	208	14.1
				Hood # 3	1 Fan			Supply	3	1.500	208	4.7



REVISIONS

NO.	DESCRIPTION	DATE

CAPTIVE

Mellow Mushroom, Spring TX 2
SPRING, TX

DATE: 3/1/2012

DWG.#: 1503185

DRAWN BY: MHB - 16

SCALE: 3/4" = 1'-0"

MASTER DRAWING

SHEET NO. 5

607 5th St. NW, Hickory, NC 28601 PHONE: (828) 324-4413 FAX: (819) 227-5893 EMAIL: reg16@captiveaire.com