

Maharaja

EXHAUST FAN INFORMATION

FAN UNIT NO.	FAN UNIT MODEL #	MODEL	TAG	CFM	ESP.	RPM	H.P.	Ø	VOLT	FLA	WEIGHT (LBS.)
1	NCA16FA	NCA16FA		2775	0.850	988	1.000	3	208	3.3	137.41
3	NCA16FA	NCA16FA		3354	0.850	1105	1.500	3	208	4.7	142.41
5	DJ33HFA	DJ33HFA		600	0.500	1210	0.333	1	115	4.1	61.56

HEATER/MUA FAN INFORMATION

FAN UNIT NO.	FAN UNIT MODEL #	BLOWER	HOUSING	TAG	CFM	ESP.	RPM	H.P.	Ø	VOLT	FLA	WEIGHT (LBS.)
2	NSAU1-G10	G10	NSAU.1		2220	0.550	892	1.000	3	208	3.3	210.37
4	NSAU2-G12	G12	NSAU.2		2683	0.550	701	1.000	3	208	3.3	286.62

FAN OPTIONS

FAN UNIT NO.	OPTION (Qty. - Descr.)
1	1 - Grease Box
2	1 - Motorized Backdraft Damper For Size 1 Housing
3	1 - Grease Box
4	1 - Motorized Backdraft Damper For Size 2 Housing
5	1 - Motorized I 15 BDD 120/240V

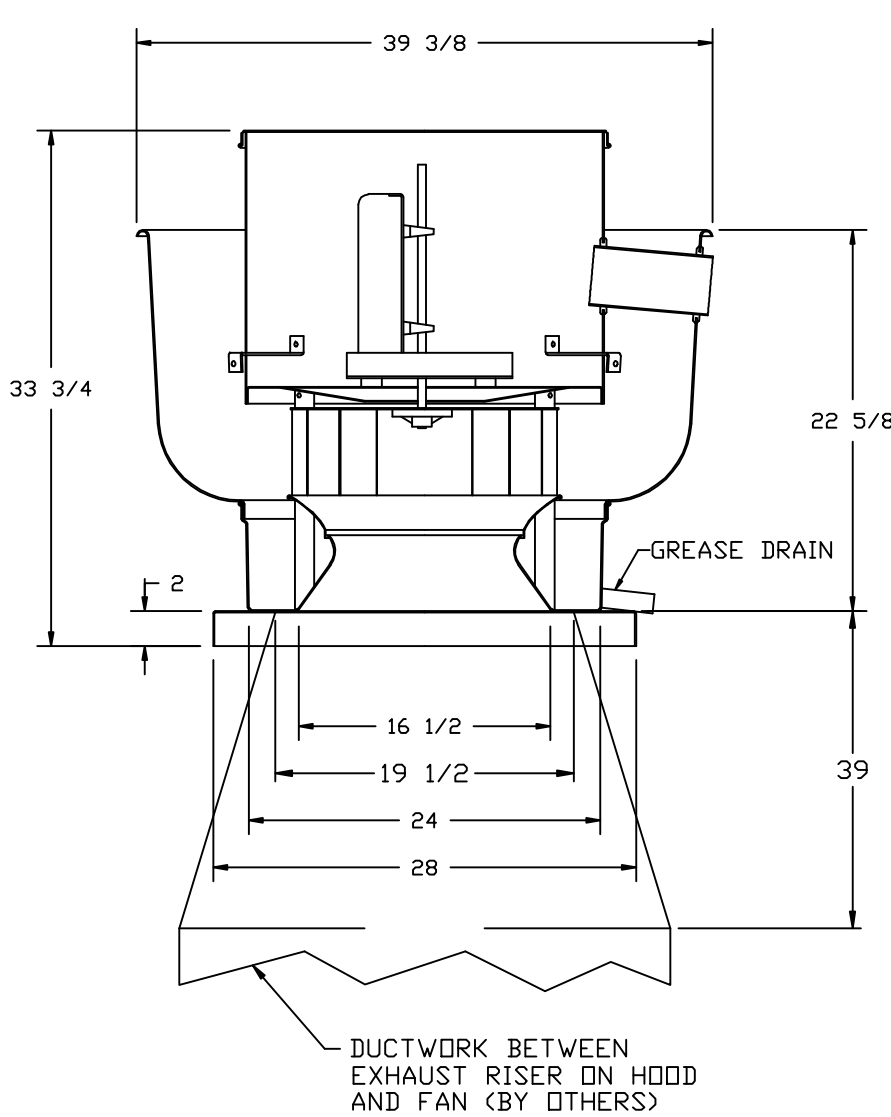
FAN ACCESSORIES

FAN UNIT NO.	FAN UNIT TAG	EXHAUST				SUPPLY		
		GREASE CUP	GRAVITY DAMPER	WALL MOUNT	SIDE DISCHARGE	GRAVITY DAMPER	MOTORIZED DAMPER	WALL MOUNT
1		YES						
2							YES	
3		YES						
4							YES	

CURB ASSEMBLIES

NO.	DN FAN	WEIGHT	ITEM	SIZE
1	# 1	41 LBS	Curb	26.500"W x 26.500"L x 20.000"H Vented Hinged
2	# 2	24 LBS	Curb	23.000"W x 23.000"L x 14.000"H
3	# 3	41 LBS	Curb	26.500"W x 26.500"L x 20.000"H Vented Hinged
4	# 4	34 LBS	Curb	32.500"W x 32.500"L x 14.000"H
5	# 5	18 LBS	Curb	19.500"W x 19.500"L x 14.000"H

FAN #1 & #3 NCA16FA - EXHAUST FAN



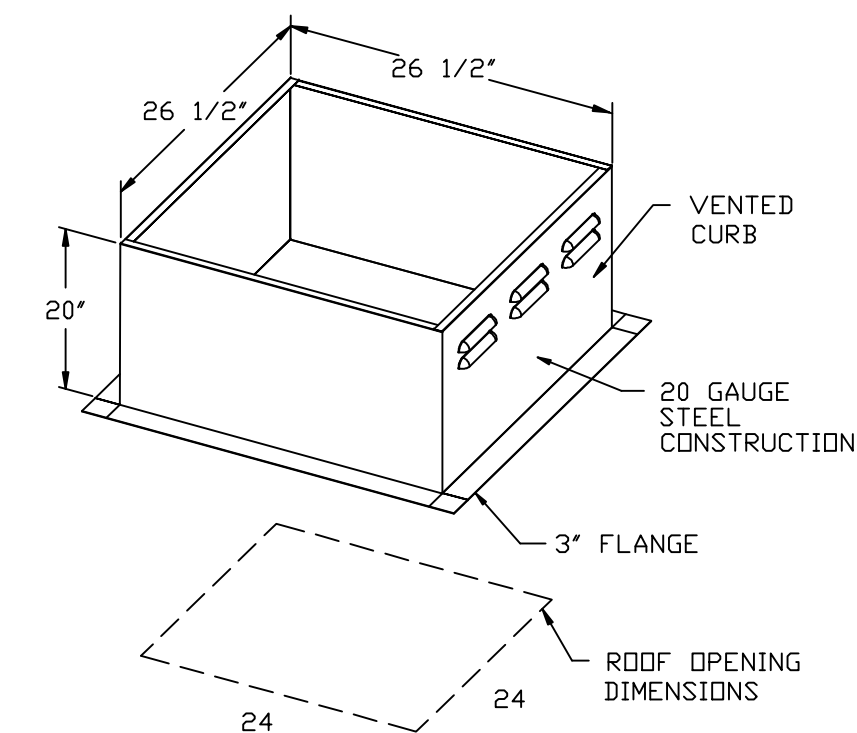
FEATURES:

- ROOF MOUNTED FANS
- RESTAURANT MODEL
- UL705 AND UL762
- AMCA SOUND AND AIR CERTIFIED
- WIRING FROM MOTOR TO DISCONNECT SWITCH
- WEATHERPROOF DISCONNECT
- HIGH HEAT OPERATION 300°F (149°C)
- GREASE CLASSIFICATION TESTING

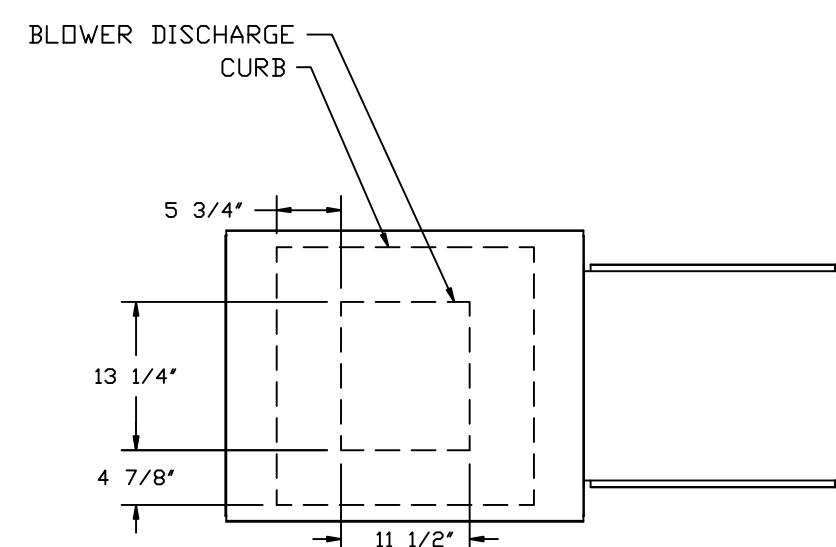
NORMAL TEMPERATURE TEST
EXHAUST FAN MUST OPERATE CONTINUOUSLY WHILE EXHAUSTING AIR AT 300°F (149°C) UNTIL ALL FAN PARTS HAVE REACHED THERMAL EQUILIBRIUM, AND WITHOUT ANY DETERIORATING EFFECTS TO THE FAN WHICH WOULD CAUSE UNSAFE OPERATION.

ABNORMAL FLARE-UP TEST
EXHAUST FAN MUST OPERATE CONTINUOUSLY WHILE EXHAUSTING BURNING GREASE VAPORS AT 600°F (316°C) FOR A PERIOD OF 15 MINUTES WITHOUT THE FAN BECOMING DAMAGED TO ANY EXTENT THAT COULD CAUSE AN UNSAFE CONDITION.

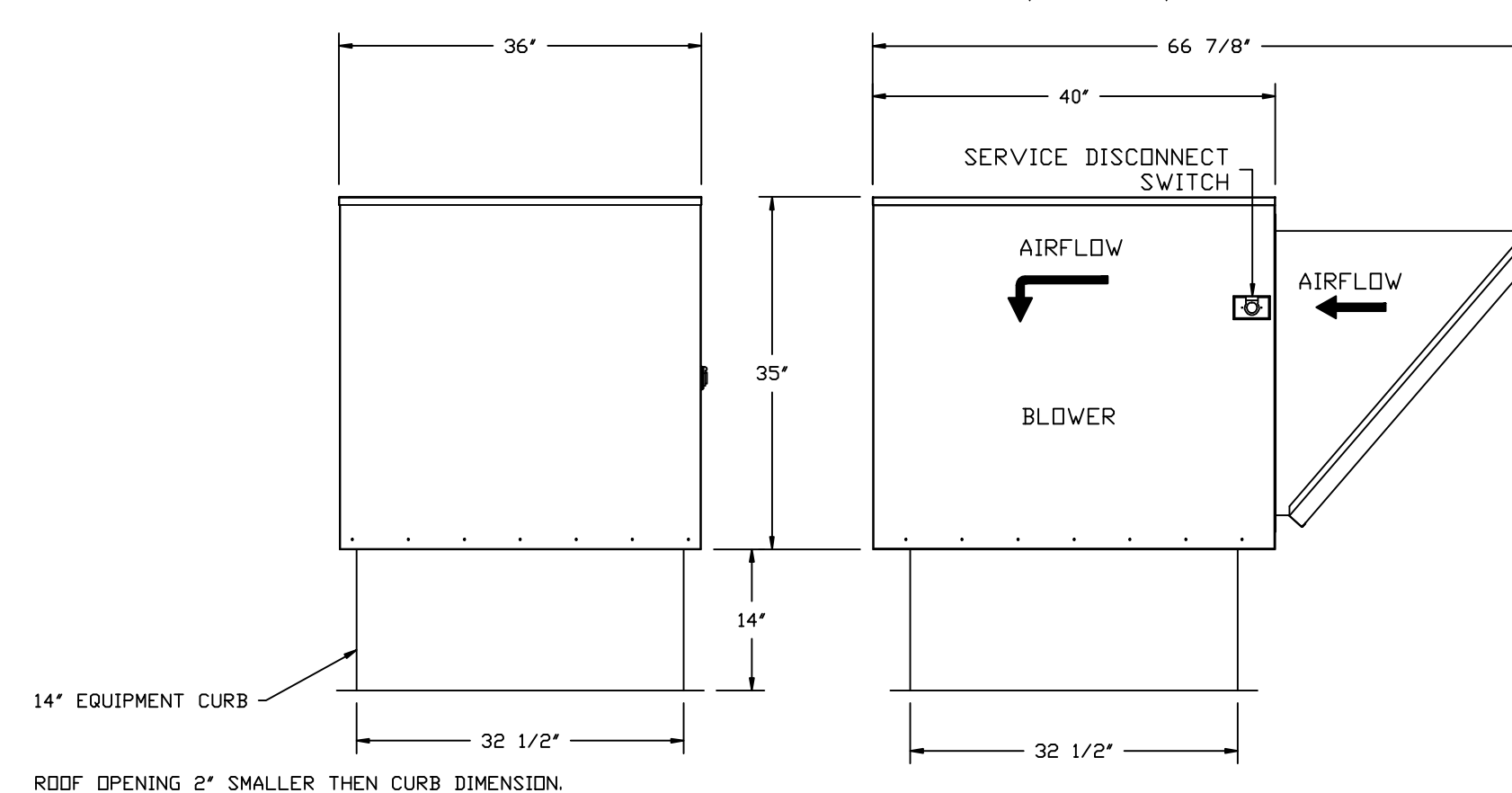
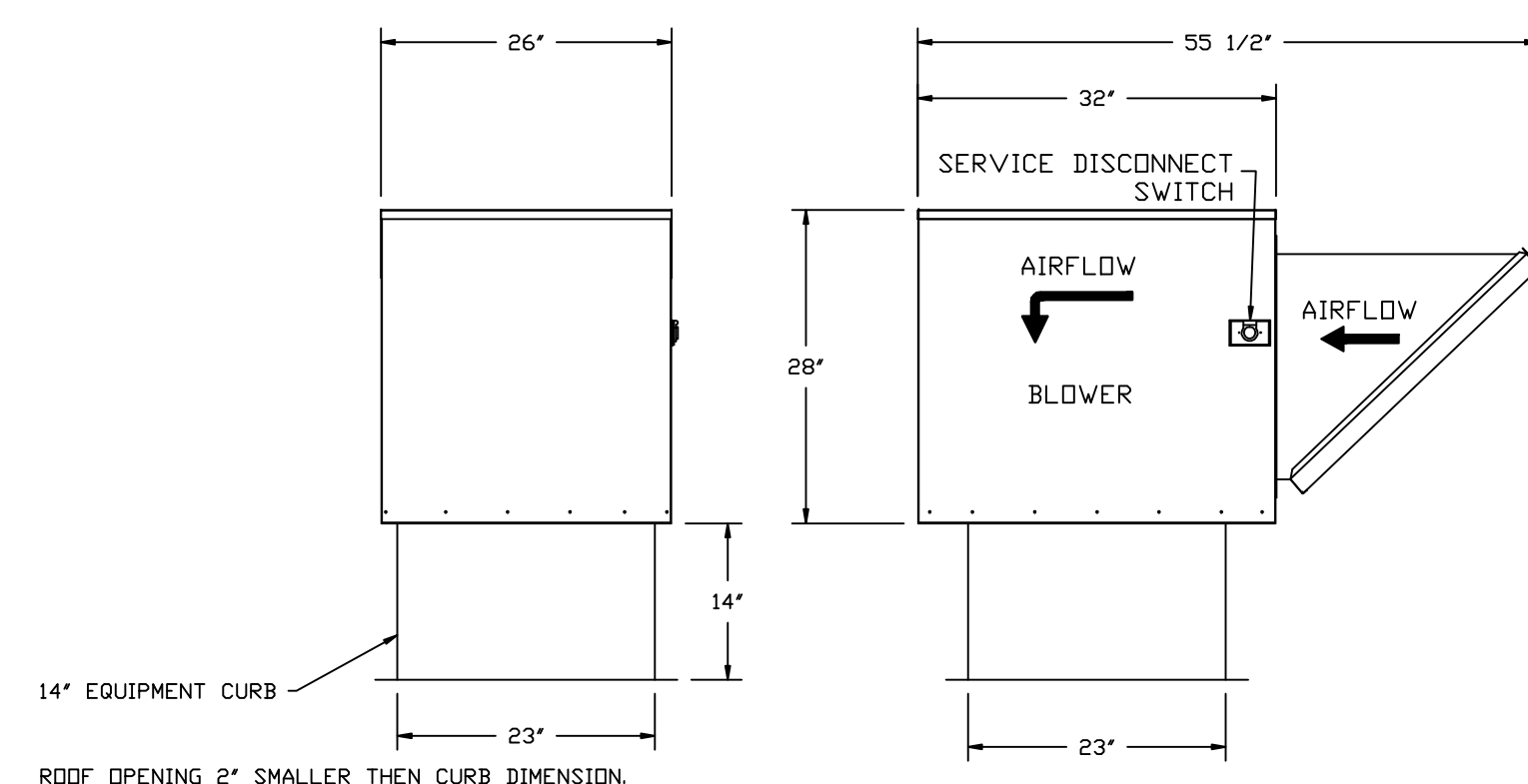
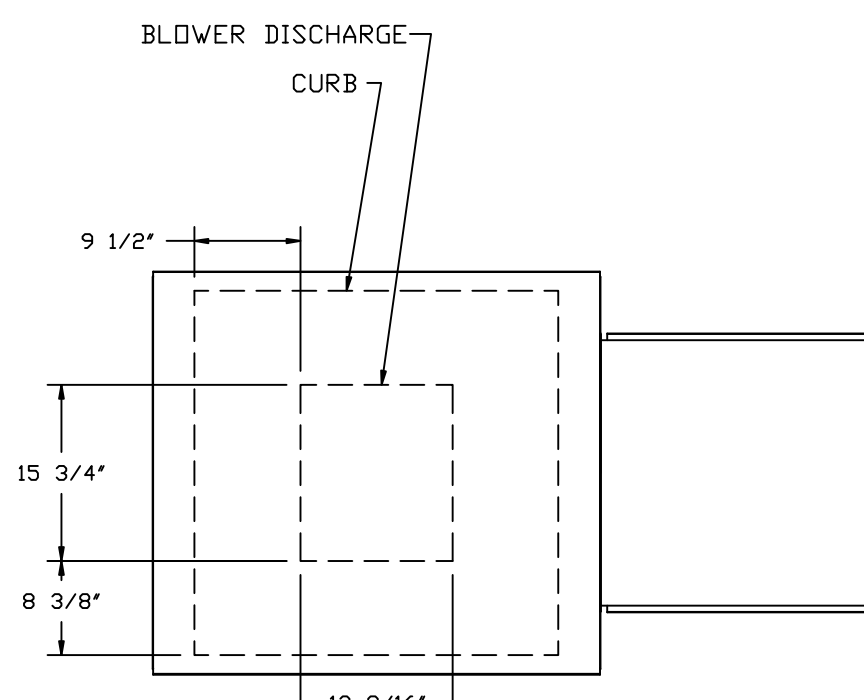
- OPTIONS**
- GREASE BOX



FAN #2 NSAU1-G10 - SUPPLY FAN
1. SUPPLY UNIT WITH 10" BLOWER IN SIZE #1 HOUSING
2. INTAKE HOOD WITH EZ FILTERS
3. DOWN DISCHARGE - AIR FLOW RIGHT -> LEFT
4. MOTORIZED BACK DRAFT DAMPER 16" X 18", STANDARD GALVANIZED CONSTRUCTION, 1 1/4" REAR FLANGE, WITH H-2000B/8 MOTOR, WALL SUPPLY MOUNT, FOR SIZE 1 UNTEMPERED FAN HOUSING (S192)



FAN #4 NSAU2-G12 - SUPPLY FAN
1. SUPPLY UNIT WITH 12" BLOWER IN SIZE #2 HOUSING
2. INTAKE HOOD WITH EZ FILTERS
3. DOWN DISCHARGE - AIR FLOW RIGHT -> LEFT
4. MOTORIZED BACK DRAFT DAMPER 22" X 24", STANDARD GALVANIZED CONSTRUCTION, 1 1/4" REAR FLANGE, WITH H-2000B/8 MOTOR, WALL SUPPLY MOUNT, FOR SIZE 2 UNTEMPERED FAN HOUSING (S192)



REVISIONS

NO.	DESCRIPTION	DATE

CAPTIVE
HOUSTON OFFICE
2828 South Loop West, Suite 620, Houston, TX 77054 PHONE: (713) 658-9844 FAX: (713) 658-9846 EMAIL: rep46@captive.com
www.captive.com

Maharaja #1466681
HOUSTON, TX

DATE: 12/20/2011

DWG.#: 1466681

DRAWN BY: GAF

SCALE: 1/16

MASTER DRAWING

SHEET NO. 3

Food Equipment Specialists
10460 SOUTH SAM HOUSTON PARKWAY WEST
HOUSTON, TEXAS 77071
TELEPHONE: 713-988-8700 FAX: 713-988-5129
EMAIL: BLEY@FOODQUIPSC.COM

PROJECT ARCHITECT:

MARTY COMEAUX
HARRELL ARCHITECTS

9575 KATY FREEWAY
HOUSTON, TEXAS 77024

MAHARAJA INDIAN RESTAURANT

GESSNER AND SW FREEWAY HOUSTON, TEXAS

KITCHEN HOODS AND FAN DETAILS 3 OF 4

DRAWING TITLE:

ISSUE/REVISIONS:

ISSUE - 21 DECEMBER 2011
ISSUE FOR PERMIT 01-25-12
ISSUE FOR BIDDING 02-16-12

DRAWING BY:

W.N. BLEY

SCALE:

1/4" = 1'0"

DRAWING NUMBER:

K-4.2