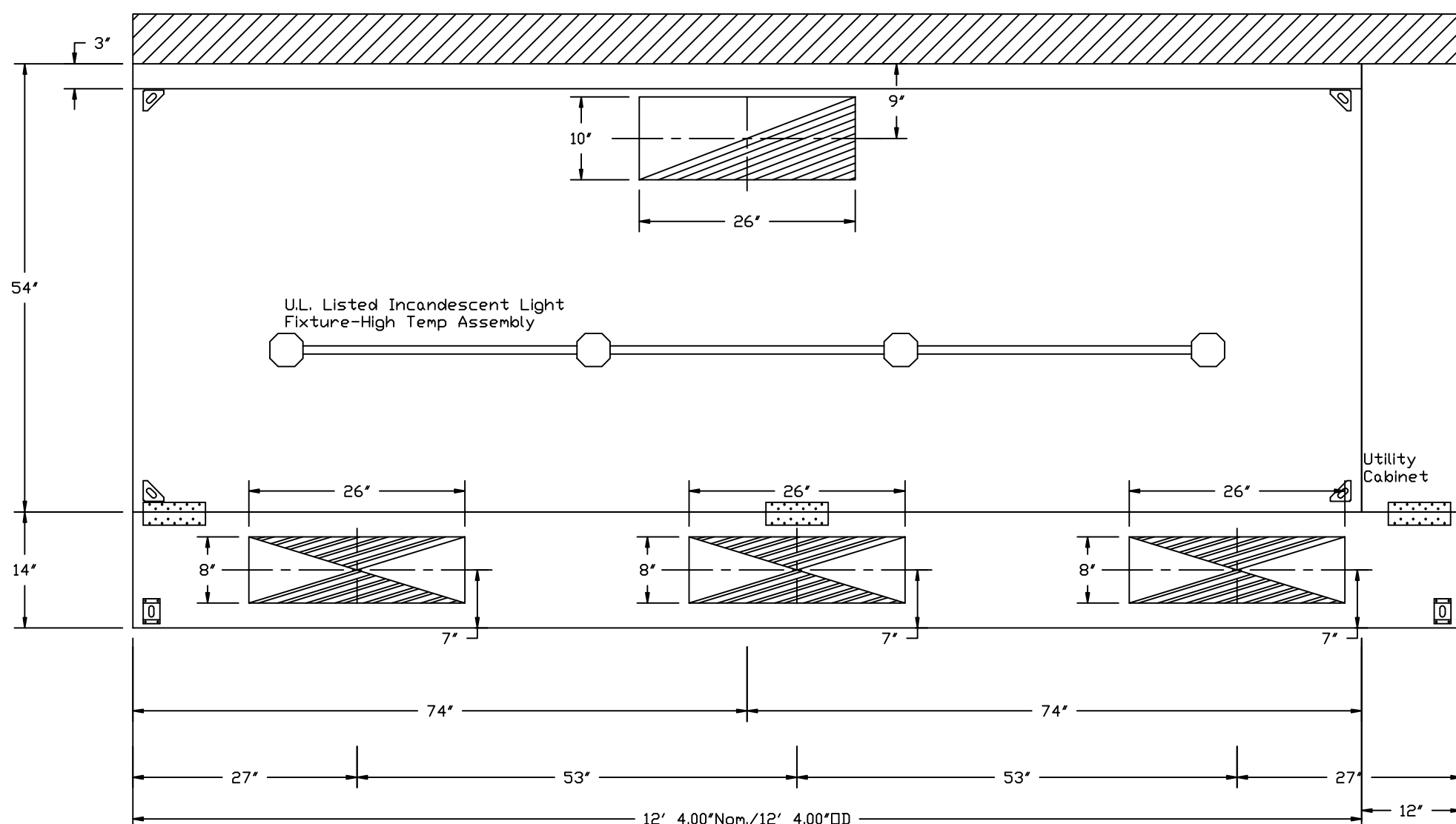
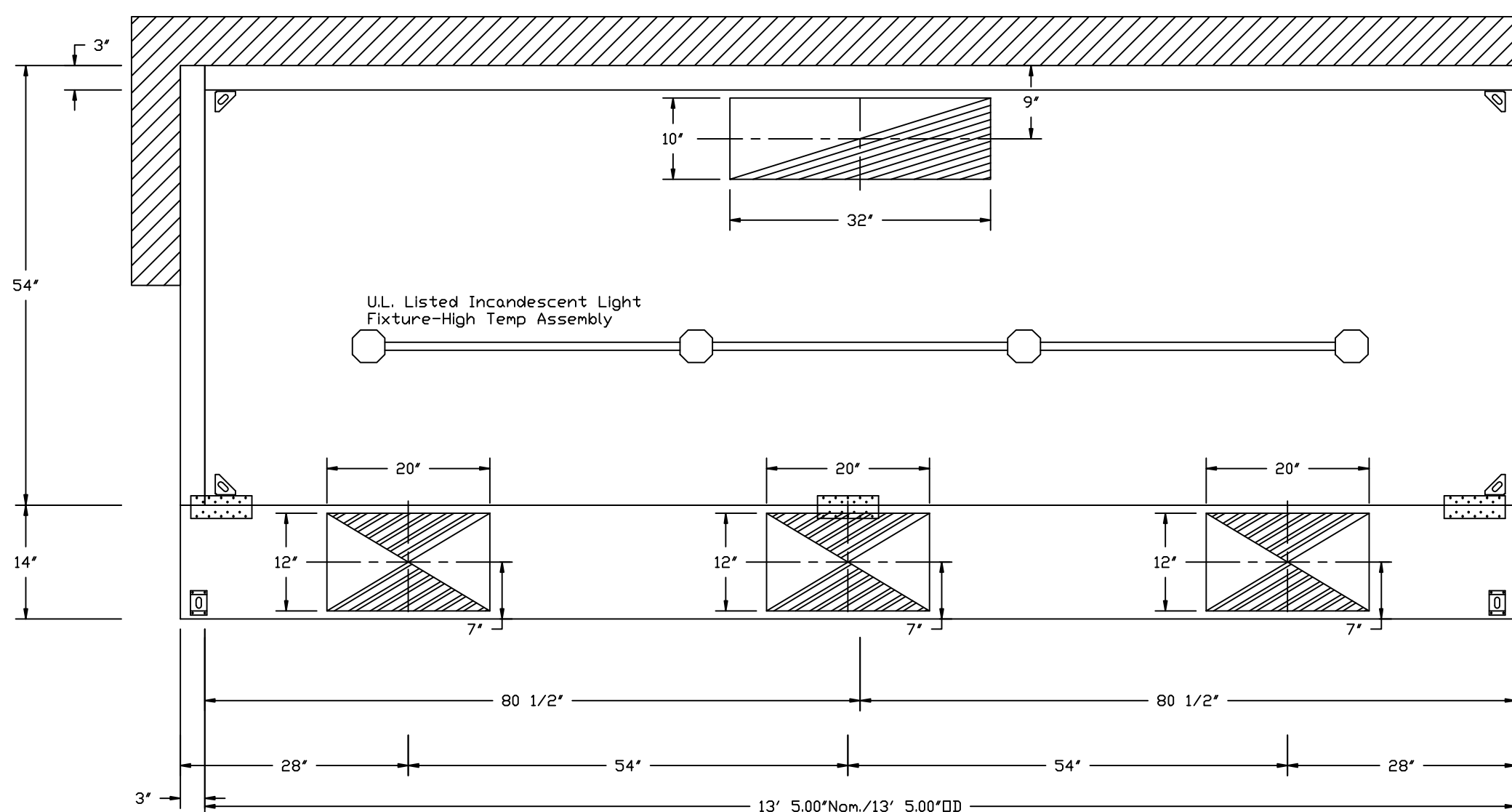


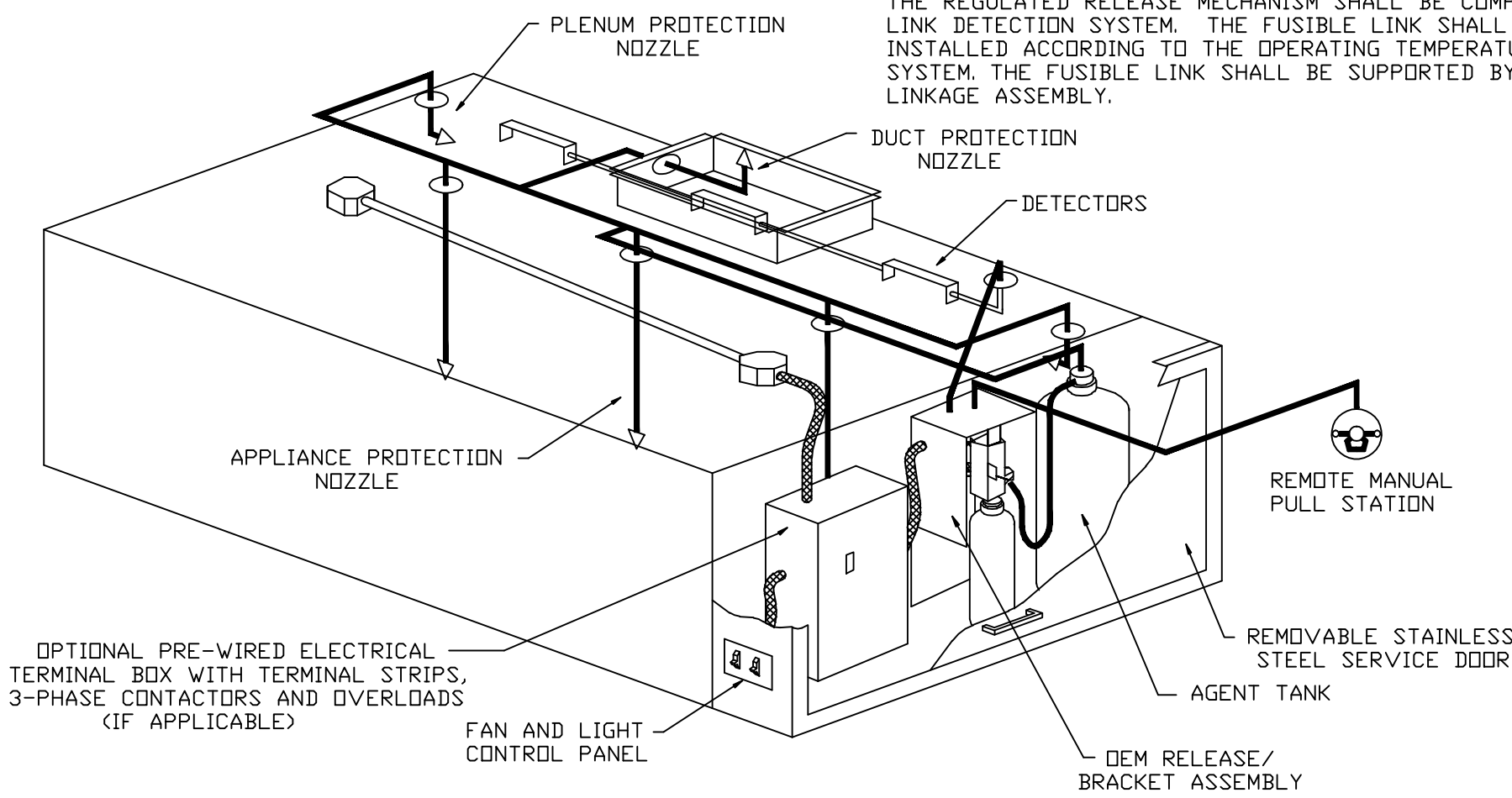
SECTION VIEW - MODEL 5424ND-2-PSP-F



PLAN VIEW - Hood #1  
12' 4.00\"/>



PLAN VIEW - Hood #2  
13' 5.00\"/>



TYPICAL ANSUL R-102 SYSTEM LAYOUT

SPECIFICATIONS

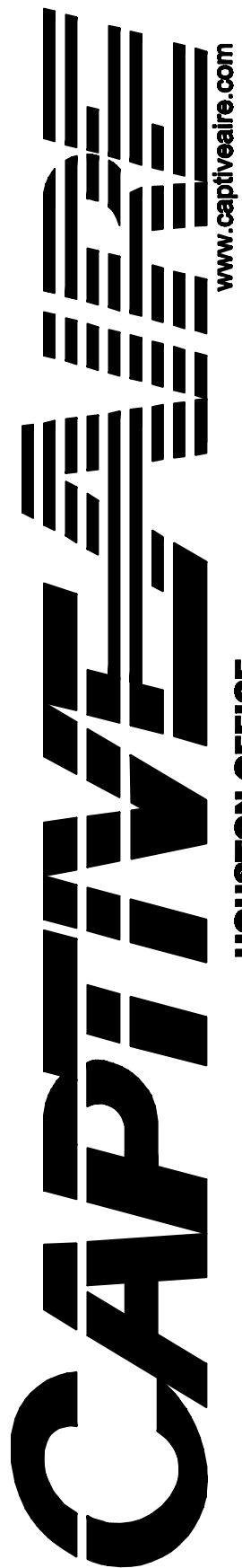
THE RESTAURANT FIRE SUPPRESSION SYSTEM SHALL BE THE PRE-ENGINEERED TYPE WITH A FIXED NOZZLE AGENT DISTRIBUTION NETWORK. IT SHALL BE LISTED WITH UNDERWRITERS LABORATORIES, INC. (UL)

THE SYSTEM SHALL BE CAPABLE OF AUTOMATIC DETECTION AND ACTUATION WITH LOCAL OR REMOTE MANUAL ACTUATION. ACCESSORIES SHALL BE AVAILABLE FOR MECHANICAL OR ELECTRICAL GAS LINE SHUT-OFF APPLICATIONS.

THE EXTINGUISHING AGENT SHALL BE A POTASSIUM CARBONATE, POTASSIUM ACETATE-BASED FORMULATION DESIGNED FOR FLAME KNOCKDOWN AND SECUREMENT OF GREASE RELATED FIRES. IT SHALL BE AVAILABLE IN PLASTIC CONTAINERS WITH INSTRUCTIONS FOR LIQUID AGENT HANDLING AND USAGE.

THE REGULATED RELEASE MECHANISM SHALL BE COMPATIBLE WITH A FUSIBLE LINK DETECTION SYSTEM. THE FUSIBLE LINK SHALL BE SELECTED AND INSTALLED ACCORDING TO THE OPERATING TEMPERATURE IN THE VENTILATING SYSTEM. THE FUSIBLE LINK SHALL BE SUPPORTED BY A DETECTOR BRACKET/ LINKAGE ASSEMBLY.

REVISIONS	
DESCRIPTION	DATE



Maharaja #1466681  
HOUSTON, TX

DATE: 12/20/2011

DWG.#:  
1466681

DRAWN BY: GAF

SCALE:  
1/16

MASTER DRAWING

SHEET NO.  
2

MAHARAJA INDIAN RESTAURANT

HOUSTON, TEXAS

KITCHEN HOODS AND FANS DETAILS 2 OF 4

DRAWING TITLE:

ISSUE/REVISIONS:

ISSUE - 21 DECEMBER 2011  
ISSUE FOR PERMIT 01-25-12  
ISSUE FOR BIDDING 02-16-12

DRAWING BY:  
W.N. BLEY

SCALE:  
1/4" = 1'0"

DRAWING NUMBER:

K-4.1

Food Equipment Specialists

10460 SOUTH SAM HOUSTON PARKWAY WEST  
HOUSTON, TEXAS 77071  
TELEPHONE: 713-988-8700 FAX: 713-988-5129  
EMAIL: BBLEY@FOODEQUIPSPEC.COM

PROJECT ARCHITECT:  
MARTY COMEAUX  
HARRELL ARCHITECTS

9575 KATY FREEWAY  
HOUSTON, TEXAS 77024