

Maharaja

HOOD INFORMATION

HOOD NO.	MODEL	LENGTH	MAX. COOKING TEMP.	EXHAUST PLENUM RISER(S)					SUPPLY PLENUM RISER(S)					HOOD CONSTRUCTION	HOOD CONFIG.		
				TOTAL EXH. CFM	WIDTH	LENG.	DIA.	CFM	S.P.	TOTAL SUP. CFM	WIDTH	LENG.	DIA.		CFM	S.P.	END TO END
1	5424 ND-2-PSP-F	12' 4.00'	600 Deg.	2775	10'	26'		2775	-0.531'		2220				430 SS Where Exposed	ALONE	ALONE
2	5424 ND-2-PSP-F	13' 5.00'	450 Deg.	3354	10'	32'		3354	-0.589'		2683				430 SS Where Exposed	ALONE	ALONE
3	4824 VHB-G	4' 0.00'	700 Deg.	600	10'	10'		600	-0.075'		0			304 SS 100%	ALONE	ALONE	

HOOD INFORMATION

HOOD NO.	TYPE	FILTER(S)		LIGHT(S)		WIRE GUARD	LOCATION	UTILITY CABINET(S)		FIRE SYSTEM	ELECTRICAL	SWITCHES	FIRE SYSTEM PIPING	HOOD HANGING WGT	
		QTY	HEIGHT	LENGTH	QTY			TYPE	SIZE						MODEL #
1	SS Baffle with Handles	3	16"	16"	4	Incandescent Light Fixt	ND	Right	Ansul R102	3.0/3.0	32222002	2 Light 2 Fan	Outside	YES	686 LBS
2	SS Baffle with Handles	8	16"	20"	4	Incandescent Light Fixt	ND							YES	664 LBS
3					0									ND	187 LBS

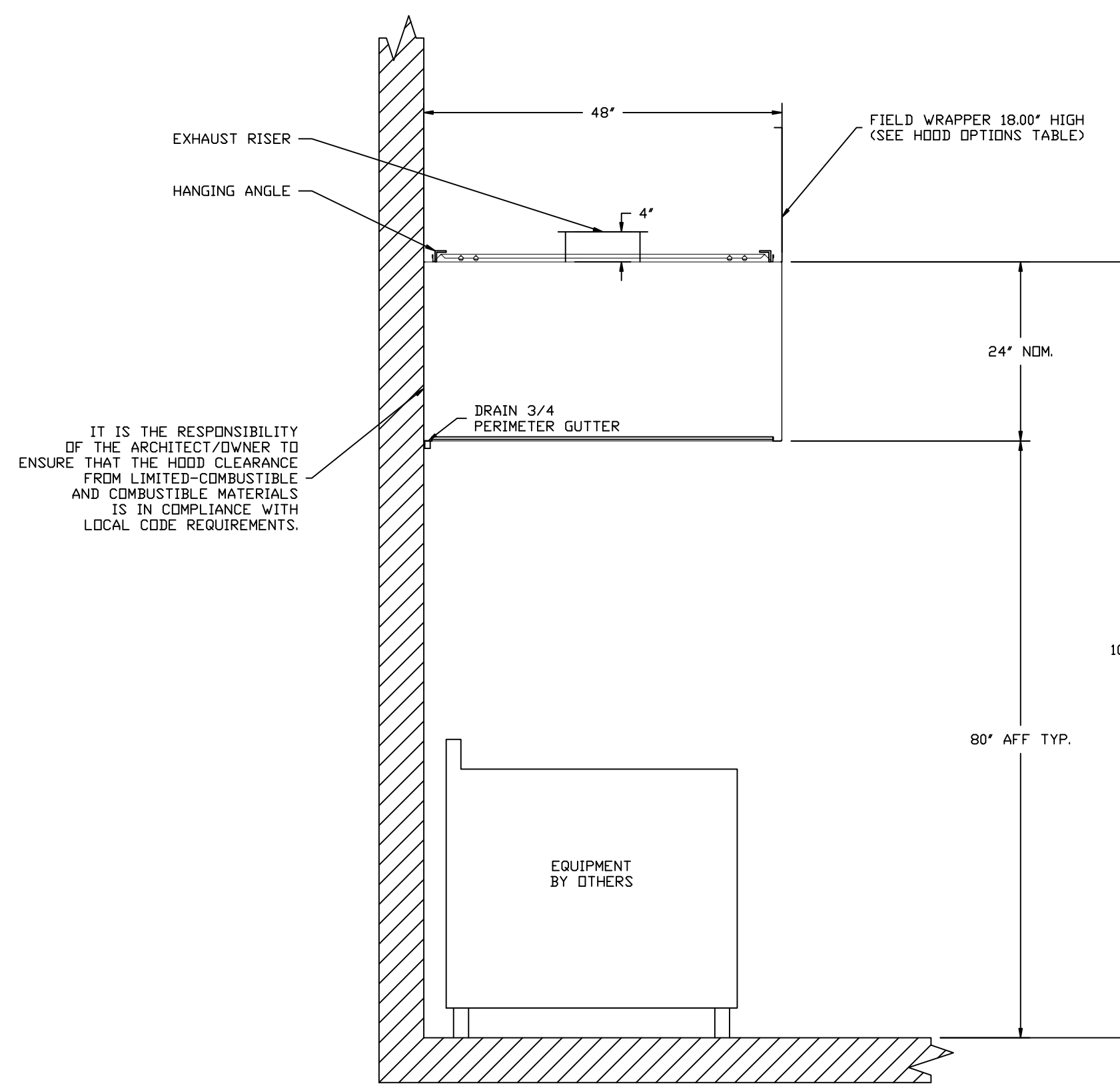
HOOD OPTIONS

HOOD NO.	OPTION	DESCRIPTION
1	FIELD WRAPPER	18.00' High Front, Left, Right
	BACKSPLASH	80.00' High X 160.00' Long 430 SS
2	FIELD WRAPPER	18.00' High Front, Left, Right
	BACKSPLASH	80.00' High X 164.00' Long 430 SS
	LEFT SIDESPLASH	80.00' High X 54.00' Long 430 SS
	LEFT END STANDOFF (FINISHED)	3' Wide
3	FIELD WRAPPER	18.00' High Front, Left, Right

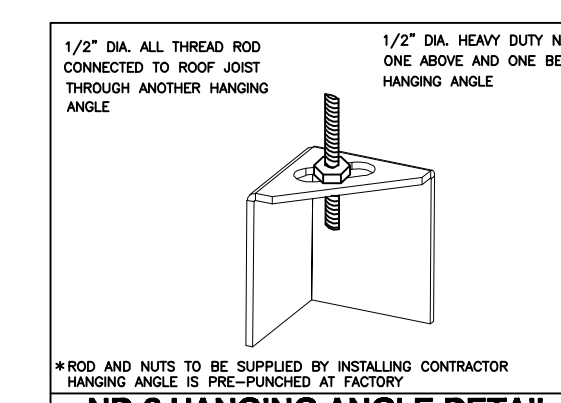
PERFORATED SUPPLY PLENUM(S)

HOOD NO.	POS.	LENGTH	WIDTH	HEIGHT	TYPE	RISER(S)				
						WIDTH	LENG.	DIA.	CFM	S.P.
1	Front	160'	14'	6'	MJA	8"	26"		740	0.332"
						8"	26"		740	0.332"
						8"	26"		740	0.332"
2	Front	164'	14'	6'	MJA	12"	20"		894	0.410"
						12"	20"		894	0.410"
						12"	20"		894	0.410"

FOR QUESTIONS, CALL
KEYZO KNEZOVIC - GUSTAVO FRANCO
2626 SOUTH LOOP WEST SUITE 620 HOUSTON, TX 77054
PHONE: (713) 839-9944, (866) 437-0700
FAX: (713) 839-9945



SECTION VIEW - MODEL 4824VHB-G
HOOD - #3



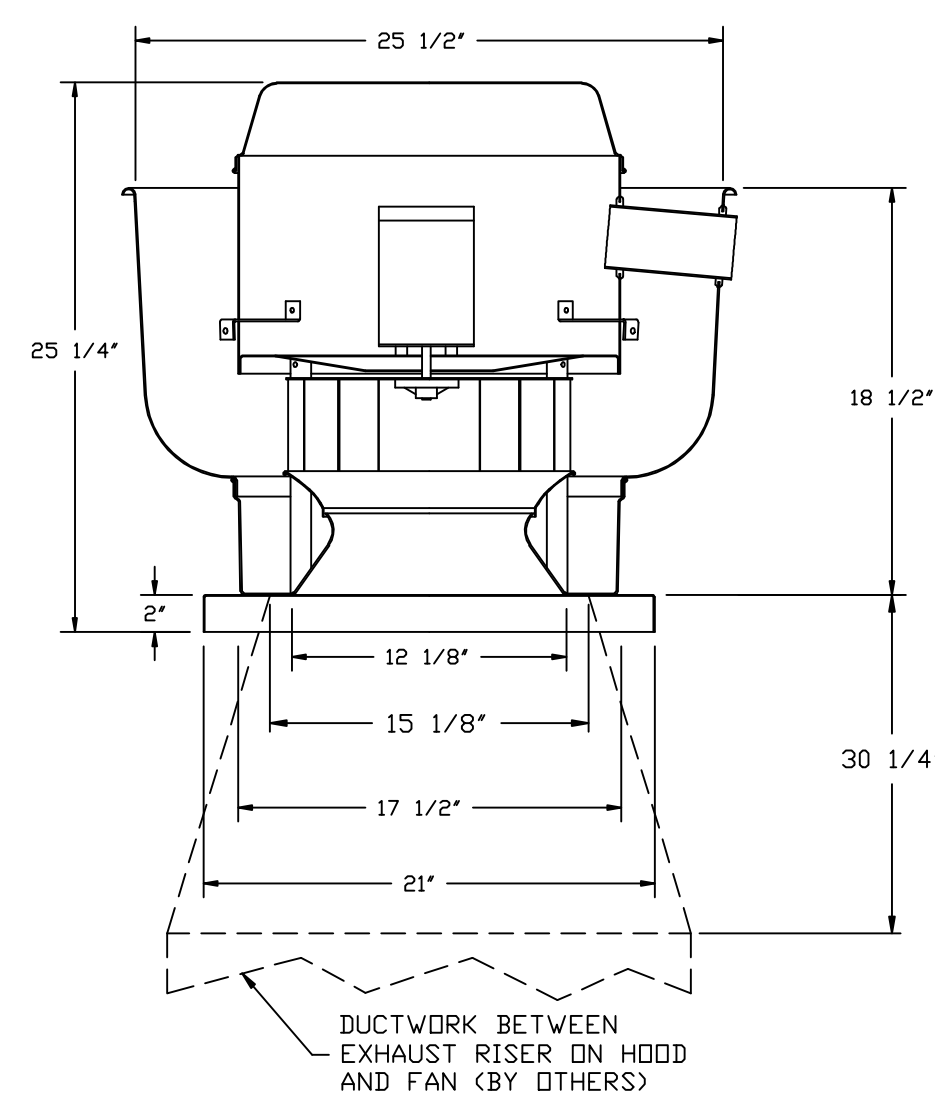
CAPTIVE-AIRE HOODS ARE BUILT IN COMPLIANCE WITH
NSF
UL 710 & ULC710 STANDARDS
E.T.L. LISTED 3054804-001
NFPA #96
NSF
E.T.L. LISTED 3054804-001

ETL LISTING DESCRIPTION BLOCK
THE CAPTIVE AIRE MODEL
ND HAS BEEN E.T.L.
TESTED, LISTED, AND
APPROVED TO EXHAUST
A MINIMUM OF 150/200/250 CFM
PER LINEAR FOOT OVER
450/600/700 DEGREE COOKING
EQUIPMENT, RESPECTIVELY.

ETL LISTING DESCRIPTION BLOCK
THE CAPTIVE AIRE MODEL
VH HAS BEEN E.T.L.
TESTED, LISTED, AND
APPROVED TO EXHAUST
A MINIMUM OF 100 CFM PER
LINEAR FOOT
OVER 700 DEGREE EQUIPMENT

EXHAUST FAN TO COVER HOOD #3

FAN #5 DU33HFA - EXHAUST FAN



FEATURES:

- ROOF MOUNTED FANS
- RESTAURANT MODEL
- UL705 AND UL762
- VARIABLE SPEED CONTROL
- INTERNAL WIRING
- WEATHERPROOF DISCONNECT
- THERMAL OVERLOAD PROTECTION (SINGLE PHASE)
- HIGH HEAT OPERATION 300°F (149°C)
- GREASE CLASSIFICATION TESTING

NORMAL TEMPERATURE TEST

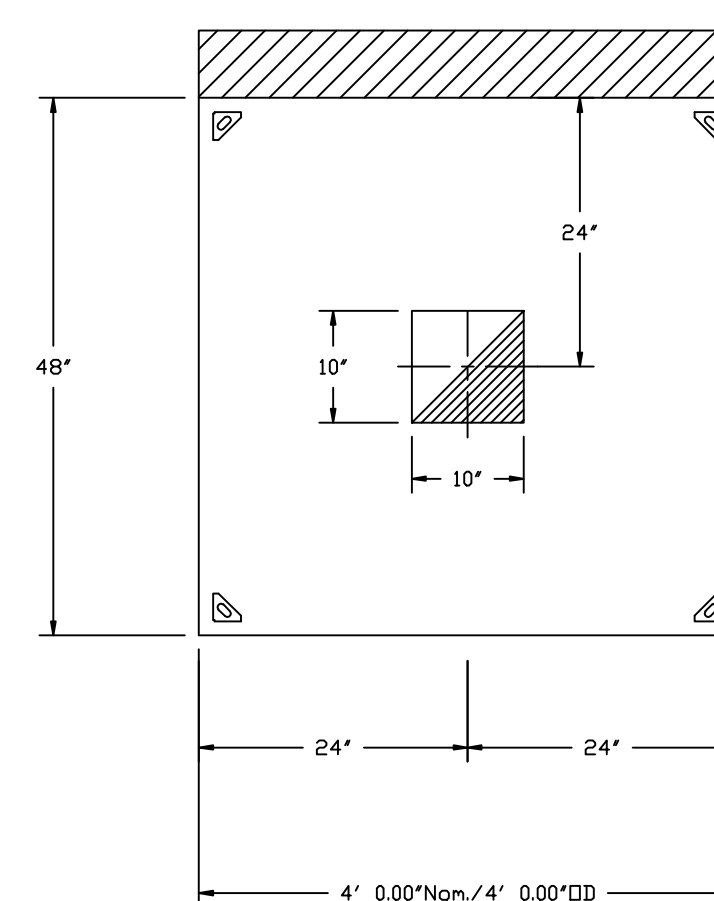
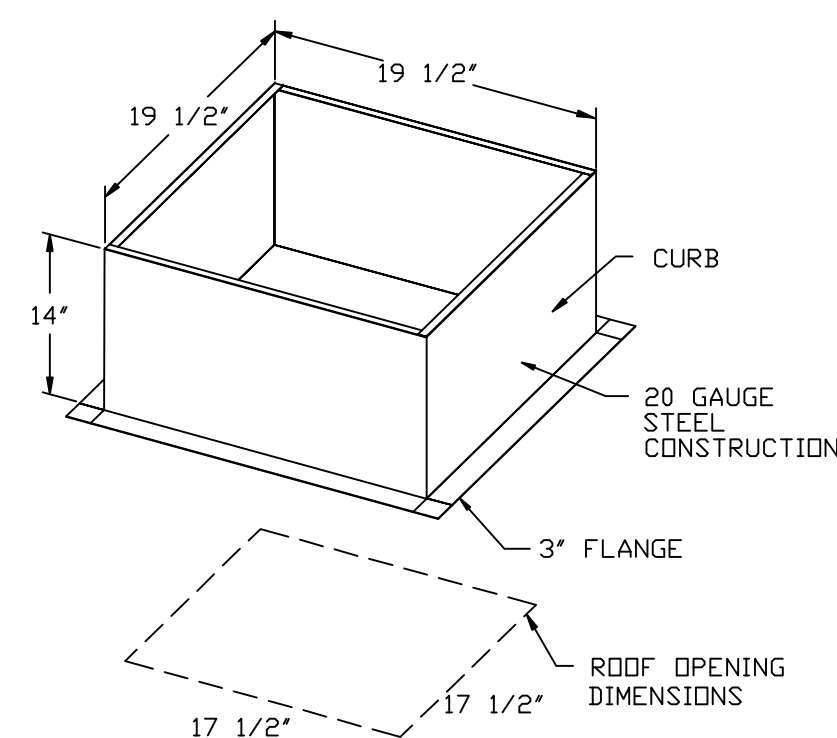
EXHAUST FAN MUST OPERATE CONTINUOUSLY WHILE EXHAUSTING AIR AT 300°F (149°C) UNTIL ALL FAN PARTS HAVE REACHED THERMAL EQUILIBRIUM, AND WITHOUT ANY DETERIORATING EFFECTS TO THE FAN WHICH WOULD CAUSE UNSAFE OPERATION.

ABNORMAL FLARE-UP TEST

EXHAUST FAN MUST OPERATE CONTINUOUSLY WHILE EXHAUSTING BURNING GREASE VAPORS AT 600°F (316°C) FOR A PERIOD OF 15 MINUTES WITHOUT THE FAN BECOMING DAMAGED TO ANY EXTENT THAT COULD CAUSE AN UNSAFE CONDITION.

OPTIONS

MOTORIZED 1 1/2 BDD 120/240V



PLAN VIEW - Hood #3
4' 0.00" LONG 4824VHB-G

REVISIONS	
DESCRIPTION	DATE

CAPTIVE AIRE
HOUSTON OFFICE
2626 South Loop West, Suite 620, Houston, TX, 77054
PHONE: (713) 839-9944 FAX: (713) 839-9944 EMAIL: rep@capaire.com

Maharaja #1466681
HOUSTON, TX

DATE: 12/20/2011

DWG.#: 1466681

DRAWN BY: GAF

SCALE: 1/16

MASTER DRAWING

SHEET NO. 1

Food Equipment Specialists
10460 SOUTH SAM HOUSTON PARKWAY WEST
HOUSTON, TEXAS 77071
TELEPHONE: 713-988-8700 FAX: 713-988-5129
EMAIL: BELEY@FOODEQUIPSP.COM

PROJECT ARCHITECT:
MARTY COMEAUX
HARRELL ARCHITECTS
9575 KATY FREEWAY
HOUSTON, TEXAS 77024

MAHARAJA INDIAN RESTAURANT
GESSNER AND SW FREEWAY HOUSTON, TEXAS

KITCEH HOODS AND FAN DETAILS 1 OF 4

ISSUE/REVISIONS:
ISSUE - 21 DECEMBER 2011
ISSUE FOR PERMIT 01-12-25
ISSUE FOR BIDDING 02-16-12

DRAWING BY:
W.N. BLEY

SCALE:
1/4" = 1'0"

DRAWING NUMBER:

K-4.0