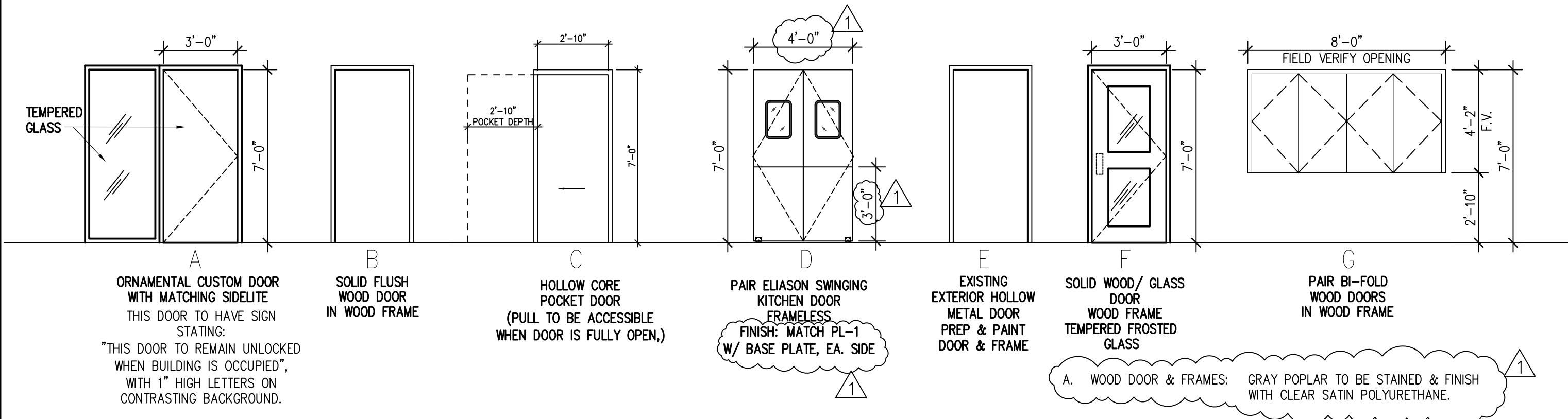




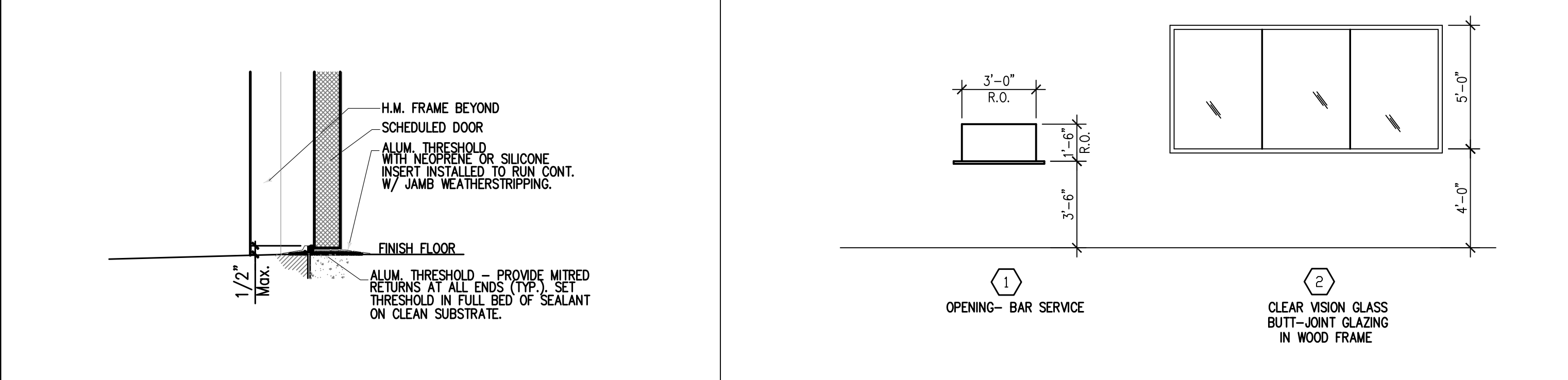
ISSUE
 01-12-12 ISSUED FOR REVIEW
 01-25-12 ISSUED FOR PERMIT
 02-16-12 ISSUED FOR BIDDING

MARK	TYPE	LOCATION	DOOR SIZE	DOOR MATERIAL	DOOR GLASS	FRAME MATERIAL	FRAME TYPE	FRAME COLOR	FINISHES INSIDE/OUTSIDE	HW/SET	REMARKS
1	A	ENTRY	3'-0" x 7'-0"	ALUM	1" INSULATED/TEMPERED	ALUM	MATCH EXIST STOREFRONT	MATCH EXIST	MATCH EXIST	1	
2	B	MEN	3'-0" x 7'-0"	WD		WD		A	A	2	
3	B	WOMEN	3'-0" x 7'-0"	WD		WD		A	A	2	
4	C	BAR SERVICE	2'-10" x 7'-0"	WD		WD	POCKET DOOR	A	A	-	HARDWARE BY DOOR MANUFACTURER
5	B	STORAGE	3'-0" x 7'-0"	WD		WD		A	A	3	
6	D	KITCHEN	PAIR 1'-10" x 7'-0"	ALUM		ALUM		A	A	-	HARDWARE BY DOOR MANUFACTURER
7	F	VESTIBULE	3'-0" x 7'-0"	WD		WD		A	A	4	
8	G	BUFFET COUNTER	4'-0" x 7'-10"	WD		WD	SHUTTER DOORS	A	A	-	HARDWARE BY DOOR MANUFACTURER
100	E	EXTERIOR	EXISTING	HM		HM		MATCH EXIST	MATCH EXIST	EXIST	EXIT HARDWARE, RE: DETAIL 11
100	E	EXTERIOR	EXISTING	HM		HM		MATCH EXIST	MATCH EXIST	EXIST	EXIT HARDWARE, RE: DETAIL 11

DOOR SCHEDULE 3/8" = 1'-0" **9**



DOOR TYPES 3/8" = 1'-0" **8**



EXTERIOR DOOR DETAIL NTS **11** **GLAZING TYPES** 3/8" = 1'-0" **7**

SET #1.

1	Pivot	195	RX
1	Int. Pivot	M19	RX
1	Pull bars	OP810	MC
1	Cylinder	1000-118-A01-6	CR
1	Closer	UNI7500	NO
1	Drop plates	7788 as required	NO
1	Door Stop	DS09	MC

NOTE: balance of hardware by door supplier

SET #2.

3	Hinges	TA2714 4 1/2 X 4 1/2	MC
2	Latchset	To be selected by owner	
2	Levers	To be selected by owner	
1	Floor Stop	FS01	MC

provide privacy set with locking mechanism on the inside.

SET #3.

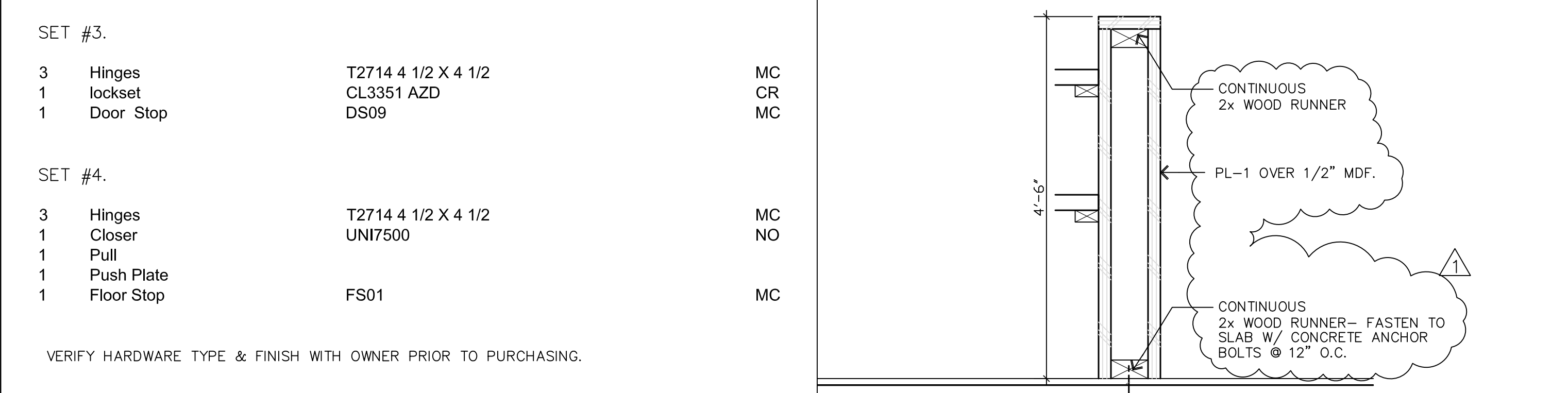
3	Hinges	T2714 4 1/2 X 4 1/2	MC
1	lockset	CL351 AZD	CR
1	Door Stop	DS09	MC

SET #4.

3	Hinges	T2714 4 1/2 X 4 1/2	MC
1	Closer	UNI7500	NO
1	Pull		
1	Push Plate		
1	Floor Stop	FS01	MC

VERIFY HARDWARE TYPE & FINISH WITH OWNER PRIOR TO PURCHASING.

GENERAL DOOR NOTES 3" = 1'-0" **6**

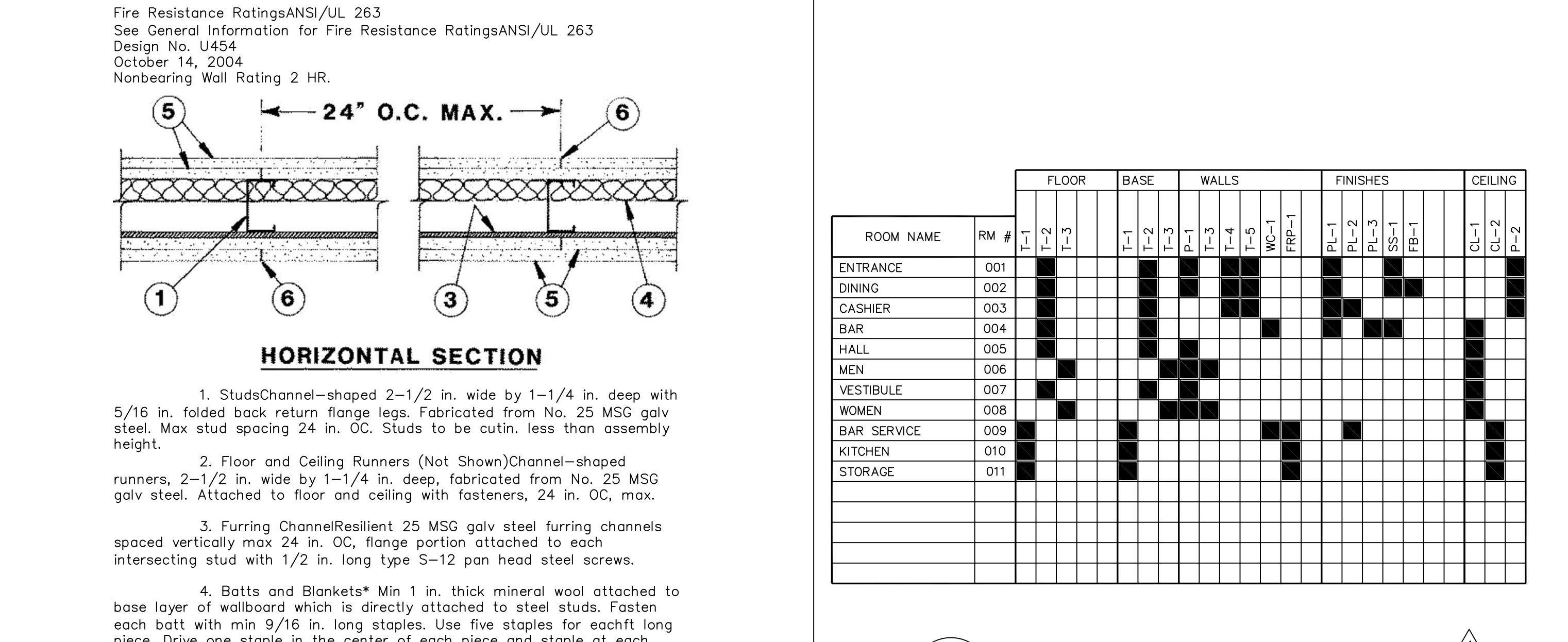


HARDWARE SETS 3/8" = 1'-0" **10** **LOW WALL** NTS **5**

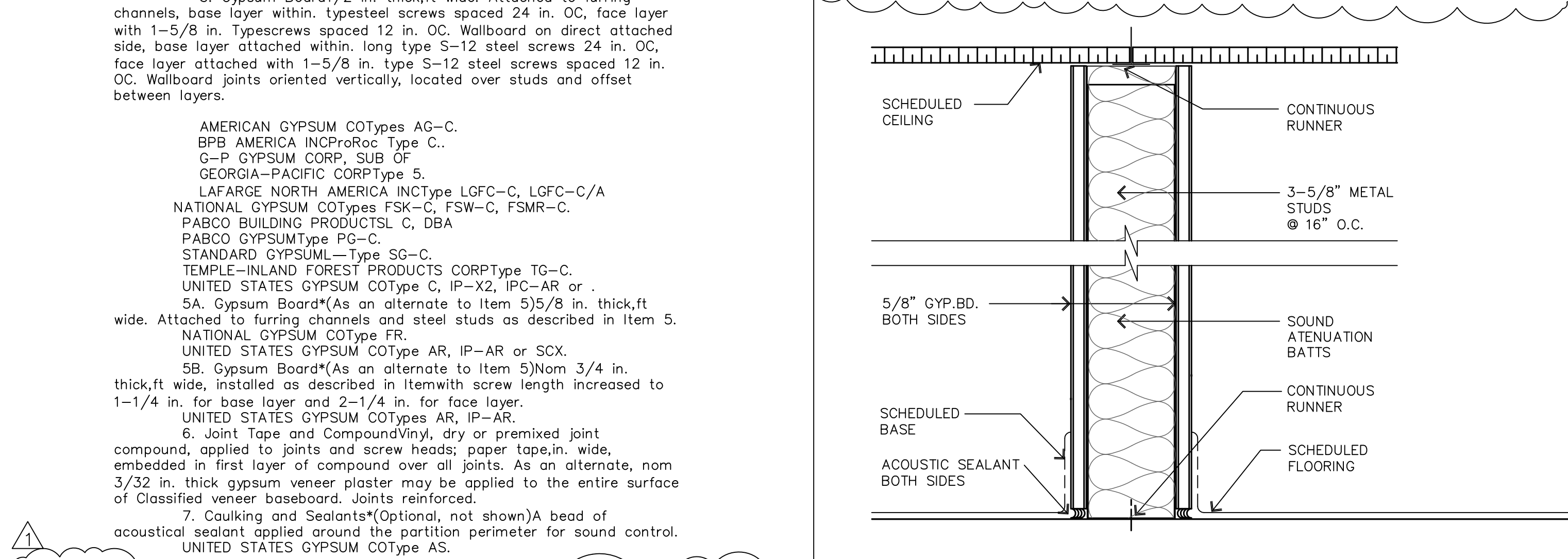
FINISH MATERIAL SCHEDULE

CODE	MATERIAL	MANUFACTURER/SUPPLIER	PRODUCT	COLOR	DESCRIPTION	LOCATION	DIMENSIONS	ADDITIONAL INFORMATION
CEILING SYSTEMS CL-#								
CL-1	ACOUSTICAL CEILING TILE	USG CEILINGS	FROST CLIMAPLUS HIGH	490 WHITE		FRONT OF HOUSE	24"x24"x7/8"	DXT FL GRID: WHITE
CL-2	PVC TILE- WATERPROOF	SPECTRA TILE CEILING	FINALE	WHITE		BACK OF HOUSE	24"x48"x1/2"	5/8" GRID: WHITE
FIBERGLASS REINFORCED PANELS FRP-#								
FRP-1	FIBERGLASS REINFORCED PANEL			WHITE		BACK OF HOUSE	4' x 8'	SEAM WITH "H" TRACK
PAINT -#								
P-1	PAINT	SHERWIN WILLIAMS		SW6140 MODERATE WHITE		FIELD WALL		RESTROOMS, DINING & HALLWAY
P-2	PAINT	SHERWIN WILLIAMS		SW7004		ALL GYP. BRD. CEILING, U.N.O.		FLAT FINISH
PLASTIC LAMINATE PL-#								
PL-1	PLASTIC LAMINATE	FORMICA	ARTISAN COLLECTION	SORREL CHERRY		FRONT OF HOUSE BASE CABINETS		
PL-2	PLASTIC LAMINATE	FORMICA		909-58 BLACK		COUNTER TOP		
PL-3	PLASTIC LAMINATE	FORMICA		TBS		COUNTER TOP		
GRANITE SURFACE SS-#								
SS-1	POLISHED GRANITE SURFACE	ARIZONA	POLISHED GRANITE	GOLDEN WAVE		FRONT OF HOUSE: COUNTER TOPS.		
TILE T-#								
T-1	QUARRY TILE	DALTILE	QUARRY FLOOR TILES	DIABLO RED (0T01)		KITCHEN	6" x 6", COVE: 5" x 6"	GROUT, MAPEI #60-CHARCOAL
T-2	PORCELAIN TILE	DALTILE	CLIFF POINTE	SUNRISE CP81		DINING FLOOR	18" x 18"	GROUT, MAPEI #42 MOCHA
T-3	PORCELAIN TILE	DALTILE	CLIFF POINTE	SUNRISE CP81		RESTROOM FLOOR & WALLS	12" x 12"	GROUT, MAPEI #42 MOCHA- FLOOR GROUT, MAPEI #94 STRAW- WALLS
T-4	PORCELAIN TILE	DALTILE	VERANDA	SAND P505		DINING WALL FIELD		VARIES GROUT, MAPEI #94 STRAW
T-5	PORCELAIN TILE	DALTILE	VERANDA	GOLD		DINING WALL ACCENT		VARIES GROUT, MAPEI #94 STRAW
BASE TB-#								
TB-1	PORCELAIN TILE	DALTILE	CLIFF POINTE	SUNRISE CP81		DINING FLOOR	6"	6" CUT TILE BASE
VINYL WALLCOVERING VWC-#								
VWC-1	VINYL	KOROSEAL WALLCOVERINGS	LUXE	CHAMOMILE L521-41		BAR		
FABRIC								
FB-1	VINYL UPHOLSTERY	CF STINSON	PATTY MADDEN SOFTWARE	CAPRENI		BOOTH SEAT		
FB-2	VINYL UPHOLSTERY	CF STINSON	PERFORMANCE FABRIC	ALGIERS		BOOTH BACKS		

FINISH SCHEDULE NTS **3**



FINISH SCHEDULE NTS **2**



PARTITION TYPE UL#454- 2 HR NTS **4** **TYPICAL PARTITION TYPE** NTS **1**

HARRELL
 ARCHITECTS, LP

9575 Katy Frewy., #200
 Houston, Texas 77024
 tel: 713.722.7071
 fax: 713.722.7072

CONSULTANTS
 Holste & Associates, Inc.
 MEP Engineers

PROJECT NAME

Maharaja Bhog

PROJECT ADDRESS
 8338 Southwest Freeway
 Houston, Texas 77074

PROJECT NUMBER

11078

SHEET NAME

SCHEDULES

SHEET NUMBER

A0.5