



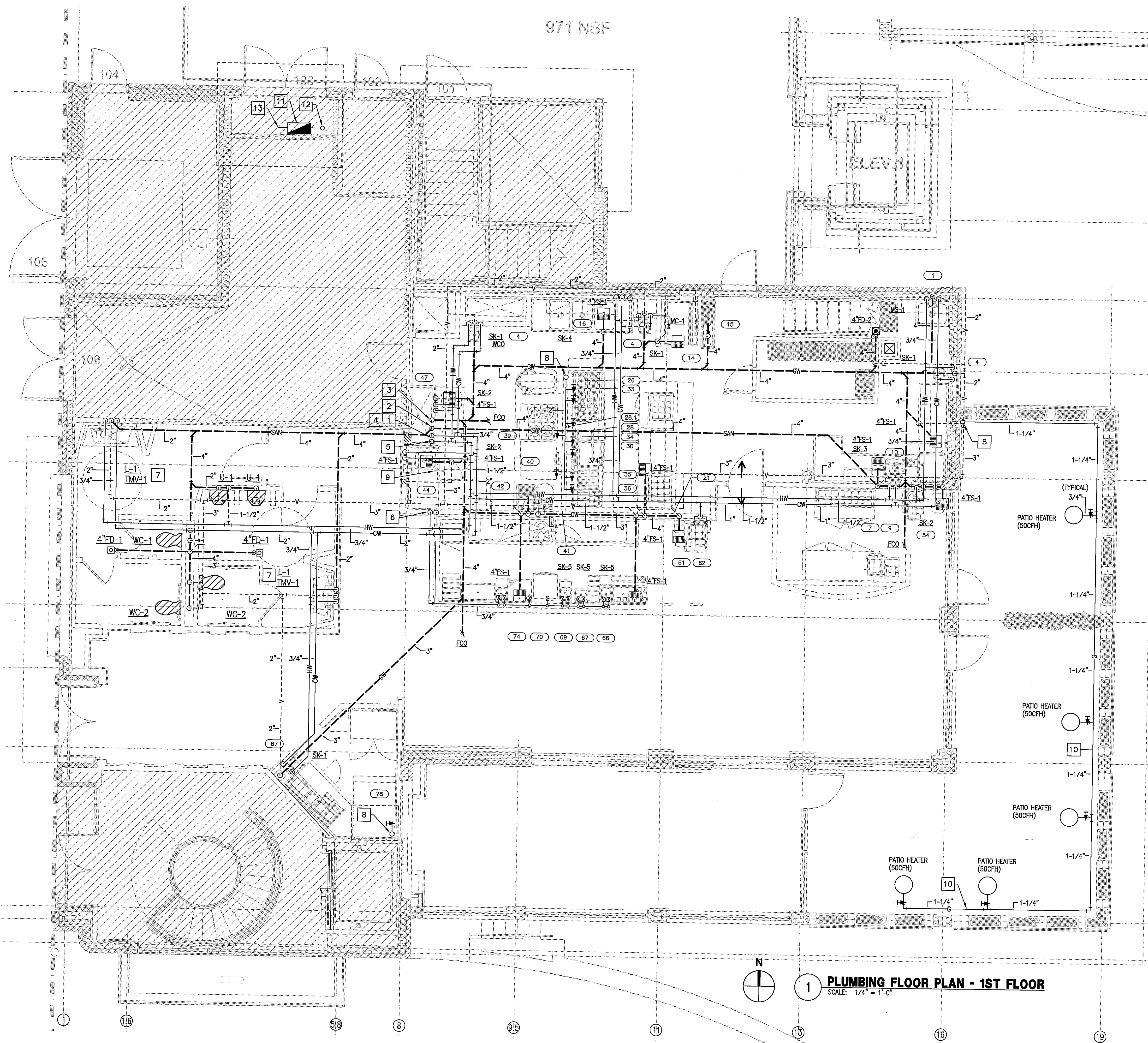
ISSUE  
 09-10-10 ISSUED FOR PERMIT  
 10-08-10 DBR REVIEW COMMENTS  
 11-02-10 ISSUED FOR CONSTRUCTION

971 NSF

**PLUMBING KEYED NOTES**

(FOR THIS SHEET ONLY)

- 1 CONNECT TO EXISTING 2" WATER STUB ABOVE CEILING. PROVIDE VALVE AND WATER METER (WITH REMOTE READOUT) TO MEET CENTER STANDARDS. COORDINATE EXACT LOCATION OF WATER METER WITH ARCHITECT.
- 2 CONNECT TO EXISTING 4" SANITARY SEWER STUB AT THIS POINT. FIELD VERIFY EXACT LOCATION AND DEPTH.
- 3 CONNECT TO EXISTING 4" GREASE LINE MAIN AT THIS POINT. FIELD VERIFY EXACT LOCATION AND DEPTH.
- 4 RISE 1-1/2" COLD WATER UP TO ROOF.
- 5 RISE 1-1/2" HOT WATER UP TO ROOF.
- 6 DROP 3/4" HOT AND COLD WATER DOWN TO BELOW COUNTER TO SERVICE FIXTURES.
- 7 PROVIDE THERMOSTATIC MIXING VALVE BELOW FIXTURE TO TEMPER HOT WATER SUPPLY TO FIXTURE. COORDINATE LOCATION OF TMV WITH ARCHITECT.
- 8 RISE GAS LINE UP TO ROOF.
- 9 CONNECT TO EXISTING 3" VENT LINE ABOVE CEILING. FIELD VERIFY EXACT LOCATION.
- 10 ROUTE GAS LINE AT FLOOR LEVEL. COORDINATE EXACT ROUTING WITH ARCHITECT.
- 11 ROUTE GAS LINE UNDER FLOOR. COORDINATE EXACT ROUTING WITH ARCHITECT.
- 12 NEW NATURAL GAS SERVICE, METER WITH REMOTE READ OUT, AND REGULATOR SET. COORDINATE METER LOCATION AND INSTALLATION IN ADVANCE WITH LOCAL GAS PROVIDER. MAKE ADJUSTMENTS AS REQUIRED. TOTAL CONNECTED LOAD: 2000 CFH AT 1/4 OUNCES OUTLET PRESSURE. COORDINATE EXACT LOCATION OF TENANT GAS METER WITH LANDLORD PROJECT MANAGER PRIOR TO ANY ROUGH-INS BEING DONE TO AVOID RELOCATION AT CONTRACTORS EXPENSE.
- 13 ROUTE NEW GAS PIPING SECURED TO THE EXTERIOR WALL AND UP TO THE ROOF. ROUTE GAS PIPING OVER ROOF AS INDICATED. PROVIDE PIPE SUPPORTS PER DETAIL LOCATED ON 8'-0" CENTERS AND AT ALL CHANGES IN DIRECTION.
- 14 CONNECT TO EXISTING GAS MANIFOLD.



**1 PLUMBING FLOOR PLAN - 1ST FLOOR**  
 SCALE: 1/4" = 1'-0"

**HARRELL**  
 ARCHITECTS, LP

9575 Katy Frwy., #200  
 Houston, Texas 77024  
 tel: 713.722.7071  
 fax: 713.722.7072

CONSULTANTS  
**HOLSTE & ASSOCIATES**  
 MEP Engineers  
 Holste & Associates, Inc.  
 Consulting Engineers - Texas Reg. 5-5443  
 6971 Southwest Frwy., Suite 830  
 Houston, Texas 77074 (713) 995-1351  
 www.holstemep.com

PROJECT NAME  
**LUCA & LEONARDO RESTAURANT**  
**LUCA & LEONARDO**  
 RESTAURANTE  
 PROJECT ADDRESS  
 20 WATERWAY  
 THE WOODLANDS, TEXAS

PROJECT NUMBER  
 10018  
 SHEET NAME  
**PLUMBING FLOOR PLAN**  
 SHEET NUMBER

**P1.00**