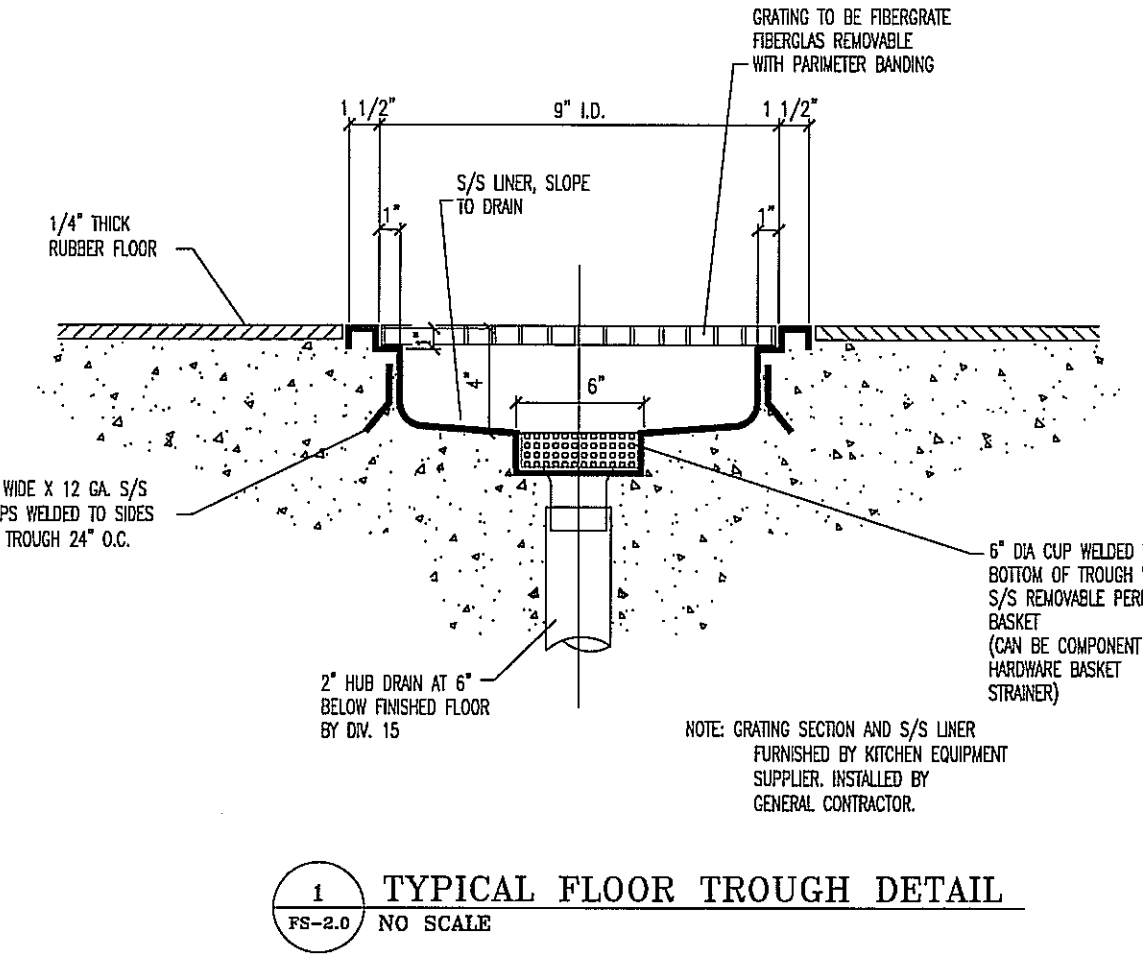


PLUMBING SCHEDULE						
NO.	UTILITY	SIZE	HEIGHT A.F.F.	LOCATION	BTU/hr	REMARKS
FS	FLOOR SINK	3"	FLOOR	FLOOR		HALF-DRAIN - TO RECEIVE INDIRECT WASTE FROM EQUIPMENT
FD	FLOOR DRAIN	3"	-1/2"	FLOOR		AREA FLOOR DRAIN - SEE DETAIL
FFD	FUNNEL FLOOR DRAIN	3"	FLOOR	FLOOR		TO RECEIVE INDIRECT WASTE FROM EQUIPMENT - 4" HIGH FUNNEL
HD	HUB DRAIN	3"	4"	FLOOR		FOR INDIRECT WASTE FROM EQUIPMENT
1	HOT & COLD WATER	1/2"	4'-0"	WALL		ETC ON MOP SINK FAUCET - VERIFY REQUIREMENTS
1.1	DRAIN	2"	1"	FLOOR		ETC ON MOP SINK WASTE - VERIFY REQUIREMENTS
4	HOT & COLD WATER	1 1/2"	20"	WALL		ETC ON HAND SINK FAUCET
	DRAIN	1 1/2"	16"	WALL		ETC ON HAND SINK WASTE
7	HOT & COLD WATER	1/2"	12"	WALL		ETC ON SINK FAUCET
9	COLD WATER	3/4"	12"	WALL		ETC ON DISPOSER
8.1	DRAIN	3"	16"	WALL		ETC ON DISPOSER
10	HOT WATER (140° F)	3/4"	5'-0"	WALL		ETC ON DISHWASHER
14	COLD WATER	1/2"	6'-0"	WALL		ETC ON ICE MACHINE, INTERCONNECT THRU FILTER
15	DRAIN	2"	-6"	FLOOR		ETC ON FLOOR TROUGH WASTE - SEE DETAIL
16	HOT & COLD WATER	1/2"	12"	WALL		ETC ON SINK FAUCET
21	COLD WATER	1/2"	12"	WALL		FOR FILL FAUCET
26	NATURAL GAS	3/4"	36"	WALL	224,000	ETC ON EIGHT (8) BURNER RANGE
28	NATURAL GAS	3/4"	36"	WALL	80,000	ETC ON PASTA COOKER
28.1	COLD WATER	1/2"	12"	WALL		ETC ON PASTA COOKER FAUCET
30	NATURAL GAS	3/4"	36"	WALL	60,000	ETC ON GRIDDLE
33	NATURAL GAS	3/4"	36"	WALL	35,000	ETC ON SALAMANDER
34	NATURAL GAS	3/4"	36"	WALL	35,000	ETC ON SALAMANDER
35	NATURAL GAS	3/4"	36"	WALL	80,000	ETC ON CHARRBROILER
36	NATURAL GAS	3/4"	36"	WALL	105,000	ETC ON FRYER
39	NATURAL GAS	3/4"	36"	WALL	180,000	ETC ON FOUR (4) BURNER RANGE
40	NATURAL GAS TWO(2)	3/4"	36"	WALL	55,000 EACH	ETC ON CONNECTION OVEN
41	COLD WATER	1/2"	12"	WALL		ETC ON KETTLE FAUCET
42	DRAIN	2"	-0"	FLOOR		ETC ON FLOOR TROUGH WASTE - SEE DETAIL
44	HOT & COLD WATER	1/2"	12"	WALL		ETC ON SINK FAUCET
47	HOT & COLD WATER	1/2"	12"	WALL		ETC ON SINK FAUCET
54	HOT & COLD WATER	1/2"	12"	WALL		ETC ON SINK FAUCET
61	COLD WATER	1/2"	40"	WALL		ETC ON COFFEE BREWER
62	COLD WATER	1/2"	48"	WALL		ETC ON TEA BREWER
66	HOT & COLD WATER	1/2"	8"	WALL		ETC ON SINK FAUCET
	HOT & COLD WATER	1/2"	20"	WALL		ETC ON HAND SINK FAUCET
67	DRAIN	1 1/2"	16"	WALL		ETC ON HAND SINK WASTE
69	HOT & COLD WATER	1/2"	8"	WALL		ETC ON SINK FAUCET
70	HOT WATER (140° F)	3/4"	12"	WALL		ETC ON DISHWASHER
74	HOT & COLD WATER	1/2"	8"	WALL		ETC ON SINK FAUCET
78	NATURAL GAS	3/4"	18"	WALL	81,000	ETC ON PIZZA OVEN



PLUMBING SYMBOLS/ABBREVIATIONS	
●	HOT WATER
○	COLD WATER
○	DRAIN
○	CONNECTION
○	FLOOR DRAIN
○	FUNNEL DRAIN
○	FLOOR SINK
○	FLOOR SINK
○	GAS CONNECTION
○	GAS SUPPLY
---	PIPE ROUTING
HW	HOT WATER
CW	COLD WATER
DR	DRAIN
AFF	ABOVE FINISHED FLOOR
BFF	BELOW FINISHED FLOOR
FD	FLOOR DRAIN
FFD	FUNNEL FLOOR DRAIN
FS	FLOOR SINK
HD	HUB DRAIN
SS	STEAM SUPPLY
SR	STEAM RETURN
EL	ELEVATION ABOVE FINISHED FLOOR
SI	STUB UP ABOVE FINISHED FLOOR
GPH	GALLONS PER HOUR
GPM	GALLONS PER MINUTE
PSI	POUNDS PER SQUARE INCH
ETC	BRANCH TO CONNECTION POINT AND CONNECT EQUIPMENT
DFA	DOWN FROM ABOVE

PLUMBING NOTES

A. PLUMBER TO CONNECT ALL WATER LINES, GAS LINES, WASTE LINES, ETC. TO FULLY CONNECT ALL EQUIPMENT AND RUN CONDENSATE DRAINS FROM UNITS TO DRAINS AND THESE LINES TO BE NO SMALLER THAN THE STUB-OUT OF THE FIXTURE. PLUMBER TO PROVIDE GATE VALVES ON ALL WATER AND GAS LINES, ALL VALVES, CUT-OFFS, UNIONS, HYDROSHOCK SHOCK ELIMINATORS, PRESSURE REGULATORS AND MATERIALS NECESSARY TO CONNECT ALL LINES, UNLESS OTHERWISE SPECIFIED IN THE ITEM SPECIFICATIONS. FAUCETS, DRAIN GULLET FITTINGS IN FINISHES AND SPECIALTY ITEMS ARE TO BE FURNISHED BY THE KITCHEN EQUIPMENT SUPPLIER AS OUTLINED IN THE ITEM SPECIFICATIONS. ALL WORK TO BE PERFORMED IN FULL ACCORDANCE WITH ALL APPLICABLE CODES RELATIVE TO INSTALLATION AND HOODUP OF EQUIPMENT. CHANGES OR ERRORS ON THE SCHEDULE DO NOT RELIEVE THE PLUMBING CONTRACTOR FROM COMPLETE FINAL PLUMBING RESPONSIBILITY.

B. ALL OUTLETS AND CONNECTIONS SHOWN RELATE TO KITCHEN EQUIPMENT ONLY. REFER TO ARCHITECTURAL/ENGINEERING PLANS FOR ADDITIONAL REQUIREMENTS.

C. ALL DIMENSIONS GIVEN ARE FROM COLUMN CENTERLINES AND/OR FINISHED WALLS AND ARE IN INCHES TO 4'-0". ELEVATIONS GIVEN ARE FROM FINISHED FLOORS. ALL ROUGH-INS SHOWN ARE TO BE RUN INSIDE WALLS (EXCEPT STUB-UPS) LOCATIONS INDICATE POINT OF EXIT FROM WALLS, CEILING OR FLOORS.

D. ALL FLOOR DRAINS TO SET 1/2" BELOW FINISHED FLOOR UNLESS OTHERWISE NOTED. DO NOT SLOPE FLOORS SO CLOSE TO DRAINS AS TO CREATE "PODS" OR "DIPS" IN FLOOR. MINIMUM RADIUS OF SLOPE TO BE 24" FROM CENTERLINE OF DRAIN.

Designers & Planners

Taylor Design Group

19119 Ferry Boat Drive
Katy, Texas 77449
Ph: (713) 447-4999 Fax: (281) 866-2684

LUCA & LEONARDO

The Woodlands, Texas

REVISIONS

Date	Issued For
▲	

Architect

Civil Engineer

Structural Engineer

Kitchen Designer
Taylor Design Group
Food Service Design & Consulting
19119 Ferry Boat Drive
Katy, Texas 77449
TEL 713-447-4999
FAX 281-866-2684

Engineer's Seal

Sheet Title

FOODSERVICE EQUIPMENT PLUMBING PLAN

Project No.: 0000.00

Drawn By: WRR

Checked By:

Date: August 13, 2010

SHEET NO.

FS-2.0