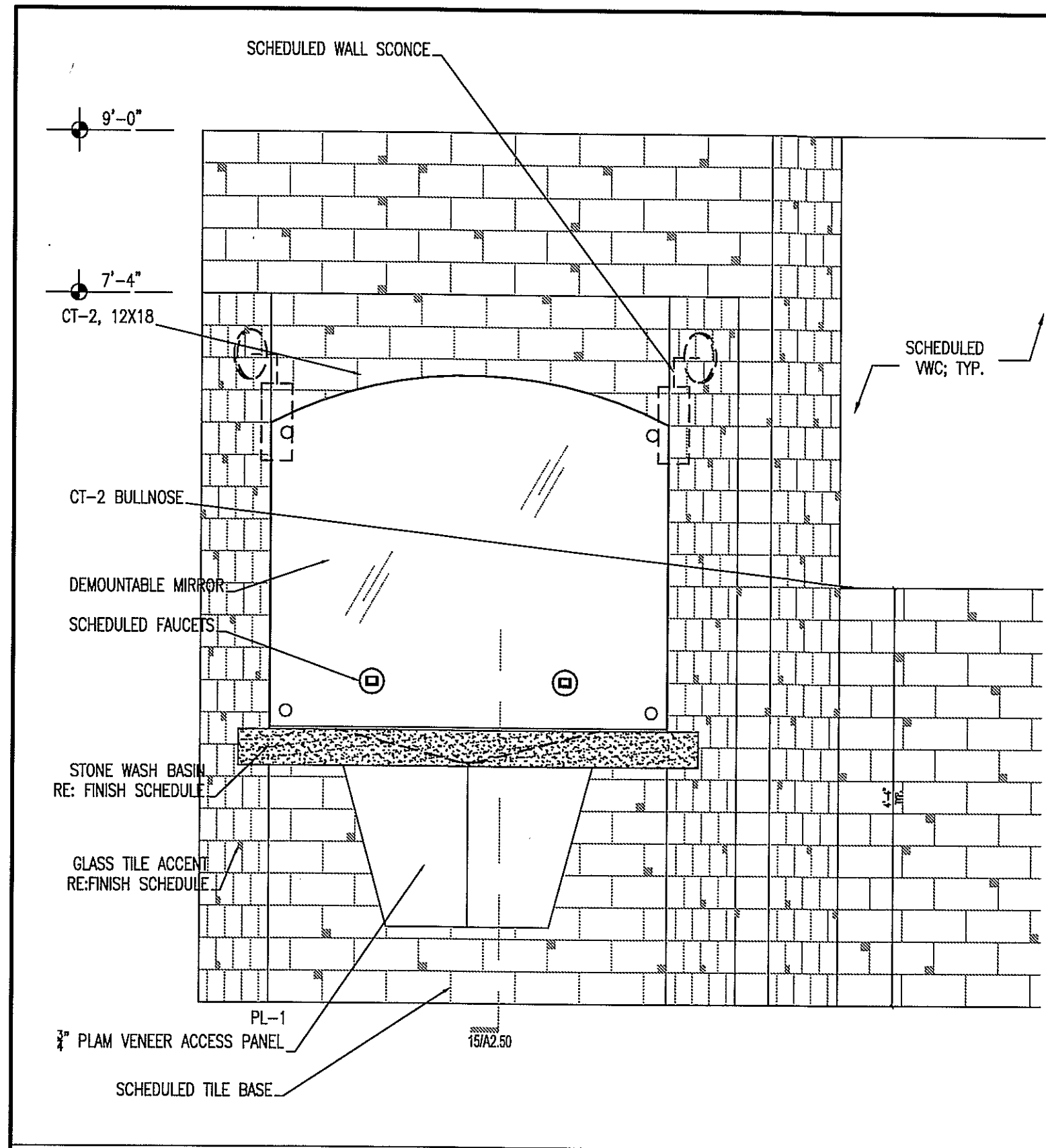
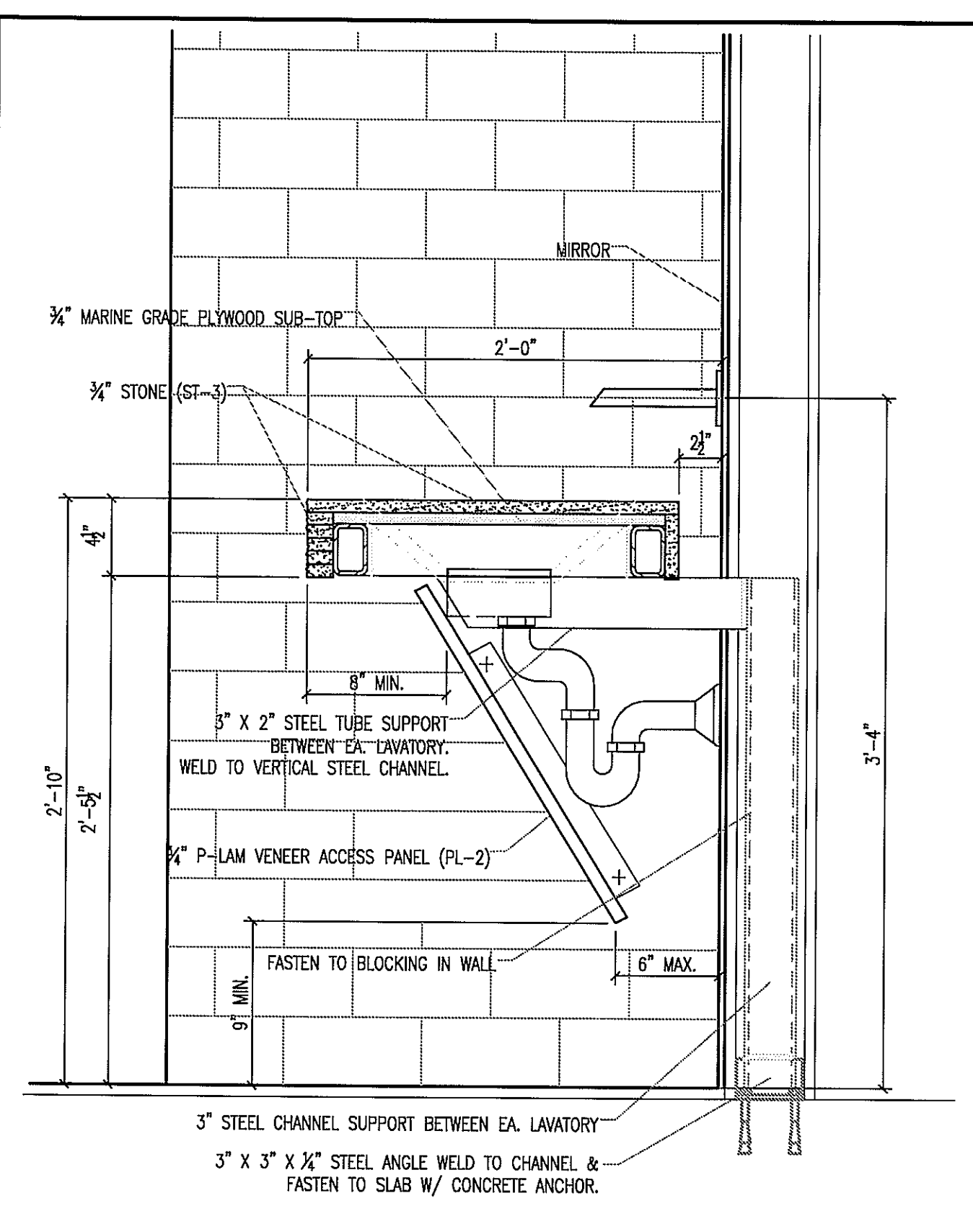


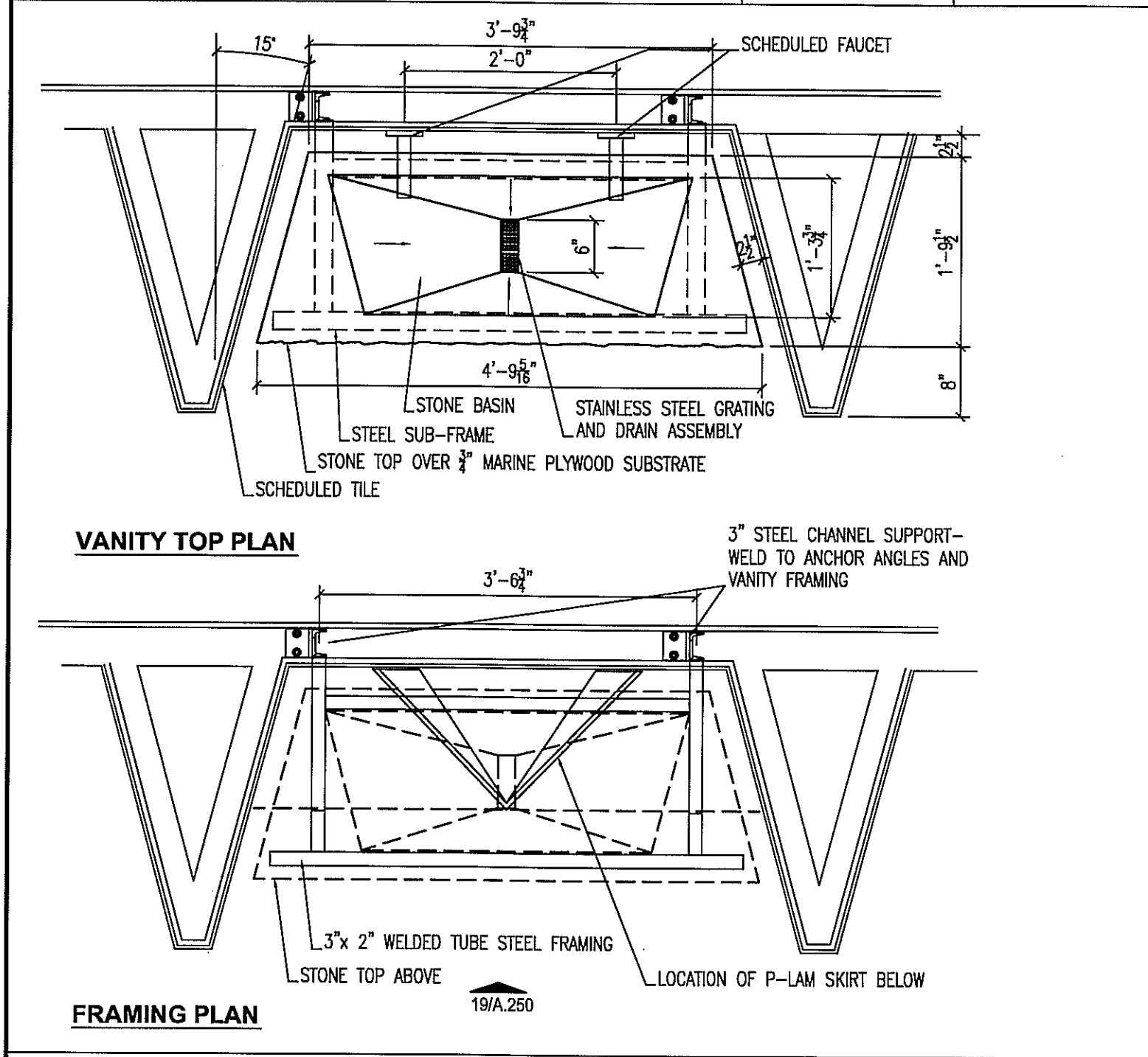
ISSUE	
09-09-2010 Permit	1
09/20/10 PERMIT REVISION	2
10-22-2010 Construction	2
10-29-2010 ASI-1-SKA-2	2



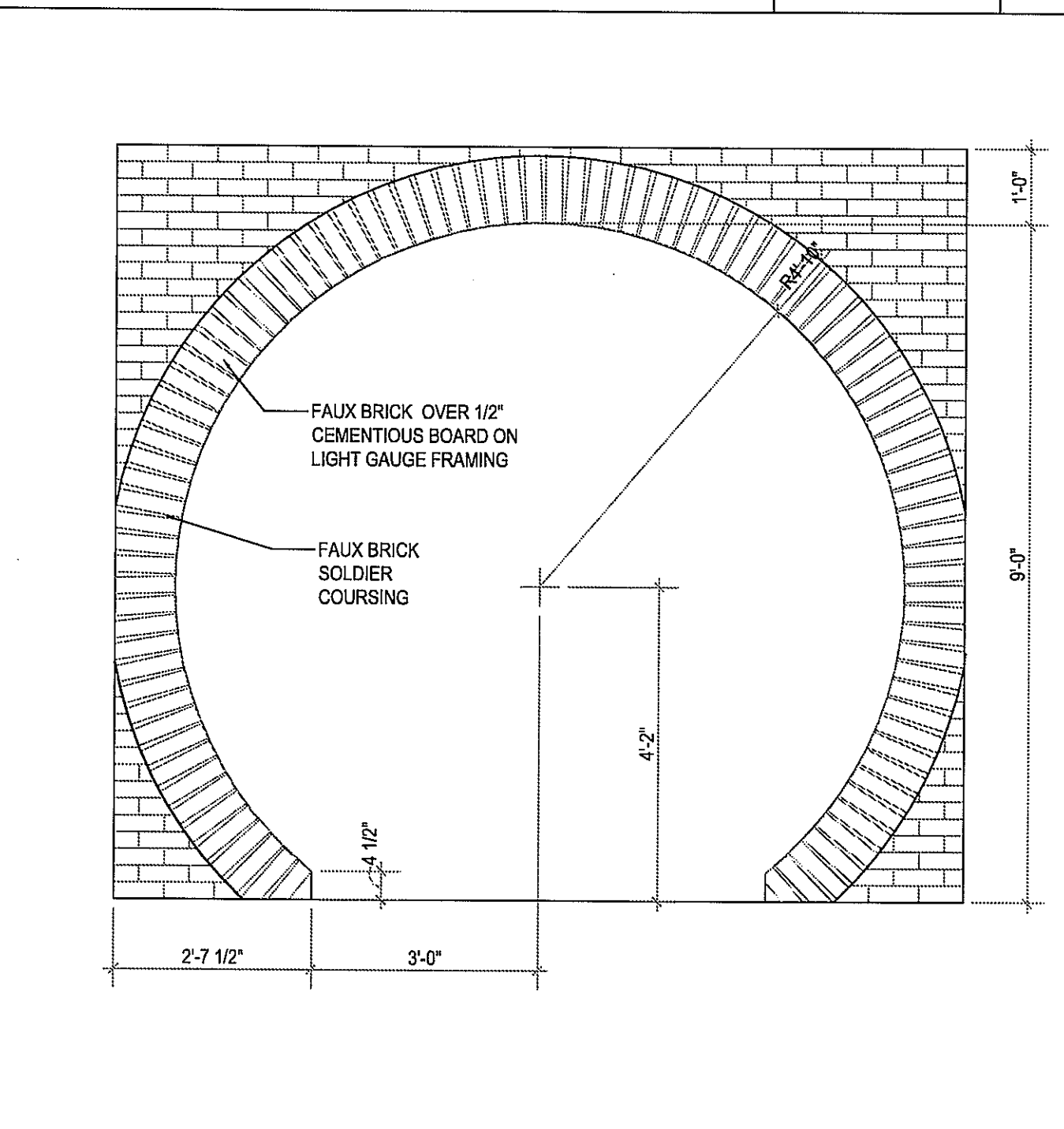
LAVATORY ELEVATION 3/4" = 1'-0" 19



LAVATORY SECTION 1-1/2" = 1'-0" 15



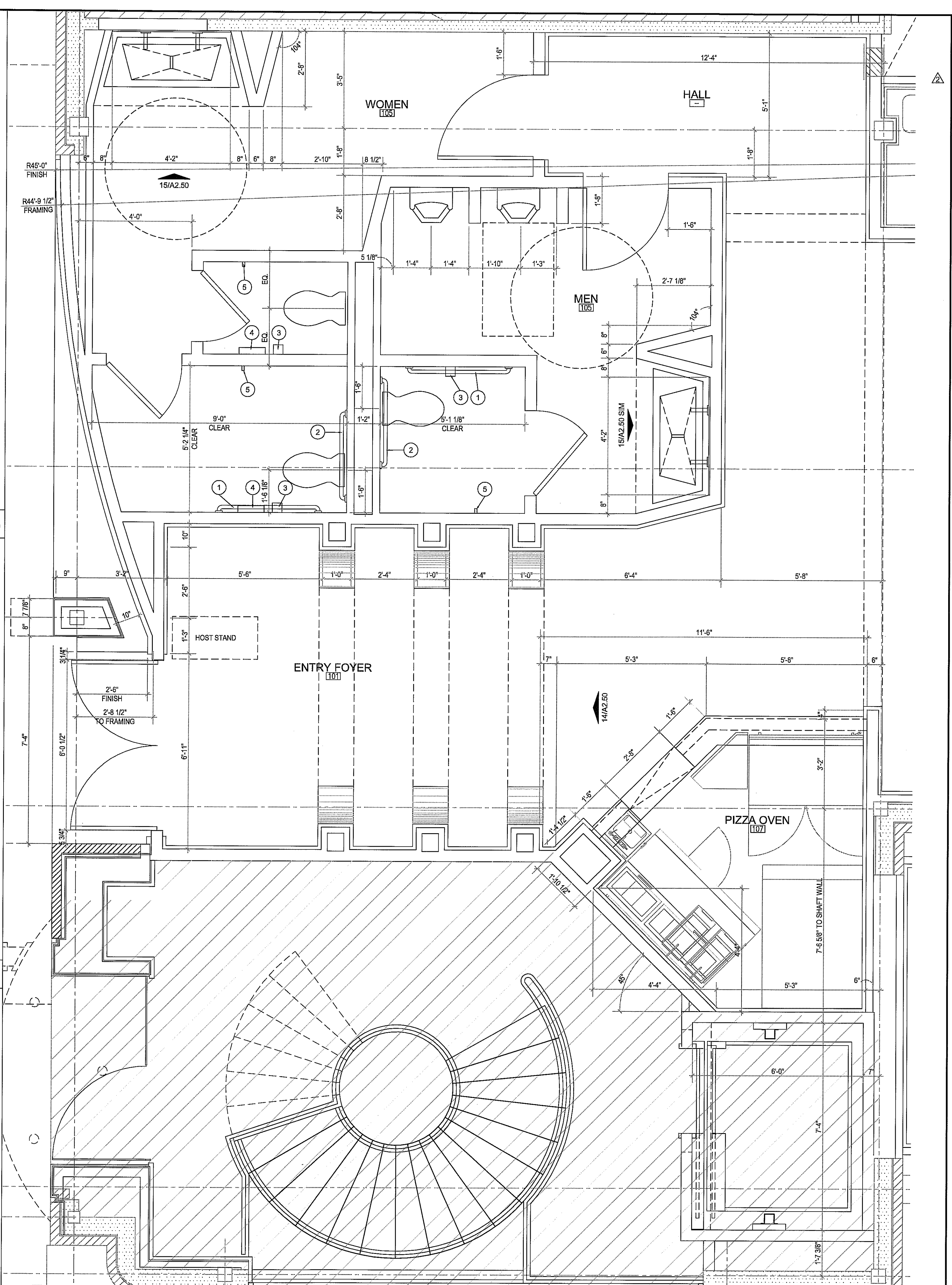
LAVATORY PLAN 3/4" = 1'-0" 18



ENTRY FOYER PORTAL ELEVATION 1/2" = 1'-0" 14

**TOILET ACCESSORY SCHEDULE** 1/2" = 1'-0" 13

- 1 Grab Bar
  1. Mounting: Surface.
  2. Manufacturer, Model: Bobrick B-5806.59x42
  3. Material: Stainless steel, peened grip surface.
- 2 Grab Bar
  1. Mounting: Surface.
  2. Manufacturer, Model: Bobrick B-5806.99x36
  3. Material: Stainless steel, peened grip surface.
- 3 Toilet Tissue Dispenser with Hood, Double Roll
  1. Mounting: Recessed
  2. Manufacturer, Model: Bobrick B6997.
  3. Material: Stainless Steel, Satin Finish
- 4 Sanitary Napkin Disposal
  1. Mounting: Recessed
  2. Bobrick B-35303
  4. Material: Stainless steel, satin finish
- 5 Coat Hook
  1. Mounting: Surface
  2. Manufacturer, Model: Bobrick B-542
  4. Material: Stainless steel, satin finish



FLOOR PLAN 1/2" = 1'-0" 1

**HARRELL**  
ARCHITECTS, LP  
9575 Katy Frwy., #200  
Houston, Texas 77024  
tel: 713.722.7074  
fax: 713.722.7072

CONSULTANTS  
Holsie & Associates, Inc  
MEP Engineers  
TDG  
Food Service  
Paul Engineering  
Structural Engineers

PROJECT NAME  
**LUCA & LEONARDO RESTAURANT**  
**LUCA & LEONARDO**  
RESTAURANTE

PROJECT ADDRESS  
20 WATERWAY  
THE WOODLANDS, TEXAS

PROJECT NUMBER  
10018  
SHEET NAME  
**RESTROOM PLAN**  
SHEET NUMBER

**A2.50**