



Louisiana
601 Spring Street | Suite A | Shreveport, LA 71101
t: 318.227.9244 | f: 318.227.9044

Texas
PO Box 130261 | Houston, TX 77219
t: 281.501.2420

www.prevotdesign.com

**ADDENDUM NUMBER ONE (1)
15 SEPTEMBER 2014**

JORDAN'S SWEET SHOPPE

FROM: PREVOT DESIGN SERVICES, APAC

PROJECT NO. A0314

TO: All Plan Holders and Bidders:

This addendum consists of 22 pages: 2 Addendum pages, 10 letter size attachments (SK-sheets), and 10 Badger Meter spec sheets for a total of 22 pages.

The following items shall form a part of the contract documents and shall take precedence over the parts of the contract documents issued prior to the date of this addendum. Any changes, which may affect construction or proper installation of materials, equipment or fixtures, not specifically mentioned in this addendum, shall be brought to the attention of the Architect in writing before submission of bid. If such conditions are found later to exist, they must be resolved in an acceptable manner, at no additional cost to the Owner. Prime Contractors are hereby advised to call attention to changes with all Subcontractors, which may affect their scope of Work. Acknowledge receipt of this addendum in the space provided on the Bid Form. Failure to do so may subject the Bidder to disqualification.

Note: Listed references may not identify all locations of revisions. General contractor is to coordinate addendum items.

CHANGES TO GENERAL REQUIREMENTS:

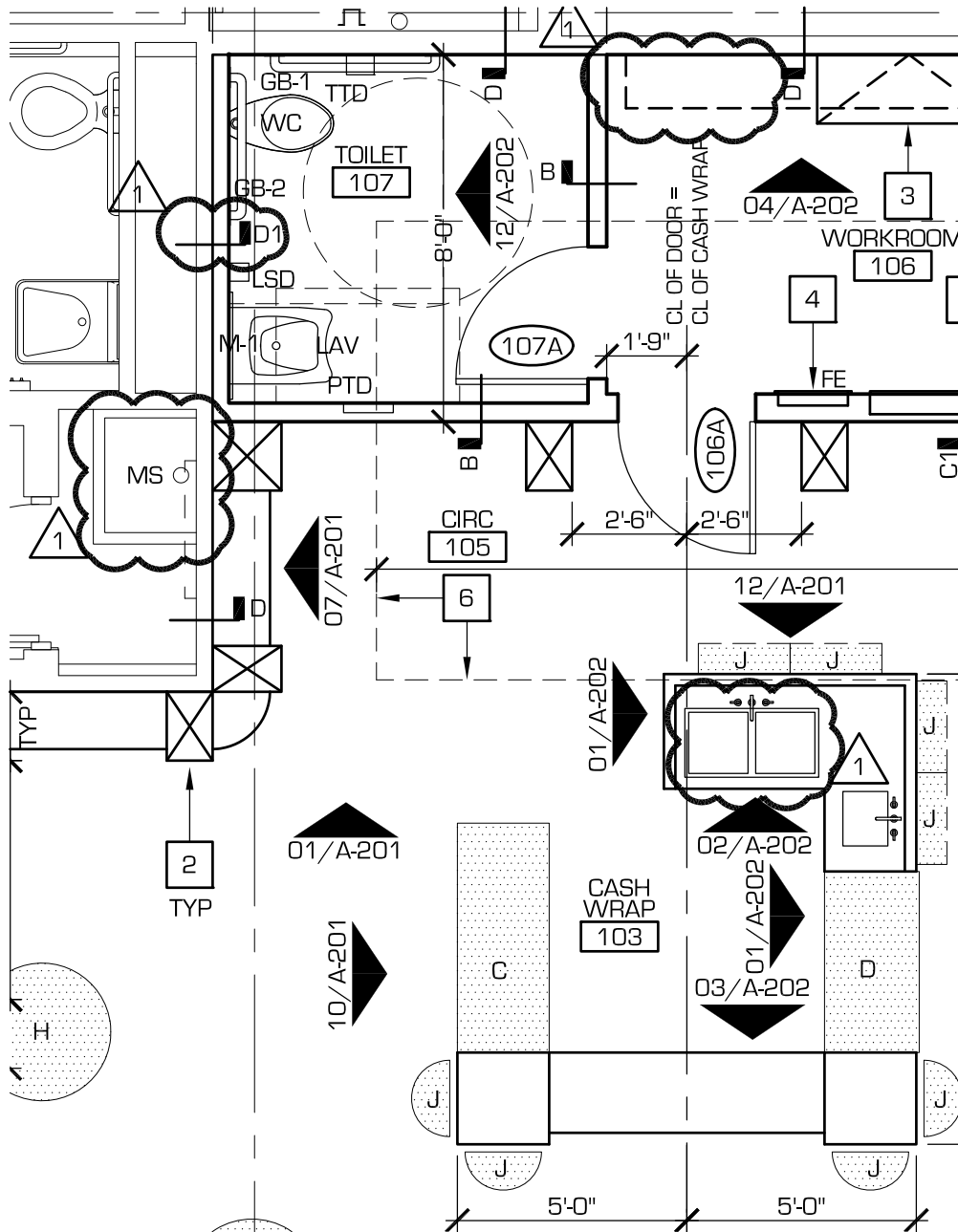
1. Required saw cutting of the slab outside of existing slab opening will be discussed at the Pre-Construction meeting with the Developer's Representative, and will require approval of means/methods from the Building Structural Engineer.
2. For Fire Protection: Sub-contractor to modify shell building branches and heads as required and to confirm connection to landlord system. Developer Required Sub: Allied Fire Protection.

3. See attached Badger Meter Technical and Installation specification sheets for water meter required by Developer. Final coordination of meter will be discussed at the Pre-Construction meeting.

CHANGES OR CLAIFICATIONS TO THE DRAWINGS:

1. SHEET A-101 – ARCHITECTURAL FLOOR PLAN, SCHEDULES, & PARTITION TYPES:
 - a. As per developer: all demising wall anchors to same side of expansion joint at framing above ceiling.
 - b. Detail 01/A-101: See SK-01 for revisions to sink location from Workroom to Cash wrap, and addition of furred out plumbing wall at demising wall of shell building. New Partition Type D1. See SK-02
2. SHEET A-202 – INTERIOR ELEVATIONS & MILLWORK DETAILS:
 - a. For revisions to Cash Wrap & Workroom interior elevations and millwork, see Sk-03 thru SK-05.
3. SHEET M-201 – MECHANICAL FLOOR PLAN:
 - a. See Sk-06 for revisions to thermostat locations.
4. SHEET E-201 – ELECTRICAL FLOOR PLAN:
 - a. See Sk-07 for revisions to outlet location from demising wall of shell building spaces.
5. SHEET P-201 – PLUMBING FLOOR PLAN:
 - a. See Sk-08 for revisions to sink location from Workroom to Cash Wrap.
6. SHEET P-901 – PLUMBING DETAILS & SCHEDULES:
 - a. See Sk-09 for revisions to plumbing riser.
 - b. See SK-10 for revisions to PLUMBING FIXTURES and PLUMBING FIXTURE CONNECTION SCHEDULE.

End of Addendum No. 1



01
A-101 ARCHITECTURAL FLOOR PLAN
SCALE: 1/4" = 1'-0"

MS EXISTING MOP SINK (N.I.C.) - TENANT ACCESS GRANT
BY SITE MANAGEMENT

COPYRIGHT

ALL REPORTS, PLANS, SPECIFICATIONS, COMPUTER FILES, FIELD DATA, NOTES AND OTHER DOCUMENTS AND INSTRUMENTS PREPARED BY THE DESIGN PROFESSIONAL AS INSTRUMENTS OF SERVICE SHALL REMAIN THE PROPERTY OF THE DESIGN PROFESSIONAL. THE DESIGN PROFESSIONAL SHALL RETAIN ALL COMMON LAW, STATUTORY AND OTHER RESERVED RIGHTS, INCLUDING THE COPYRIGHT THEREON. COPYING OR REPRODUCTION OF INSTRUMENTS OF SERVICE WITHOUT THE EXPRESS CONSENT OF PREVOT DESIGN SERVICES, APAC IS STRICTLY PROHIBITED.



PREVOT Design
Services
APAC
architecture | planning | interior design

Louisiana
601 Spring Street | Suite A | Shreveport, LA 71101
t: 318.227.9244 | f: 318.227.9044

Texas
PO Box 130261 | Houston, TX 77219
t: 281.501.2420

Project:

JORDAN'S
SWEET SHOPPE
TENANT FINISH OUT
THE WOODLANDS, TX

Date:

15 SEPTEMBER 2014

Project Number:

A0314

Reference Drawing:

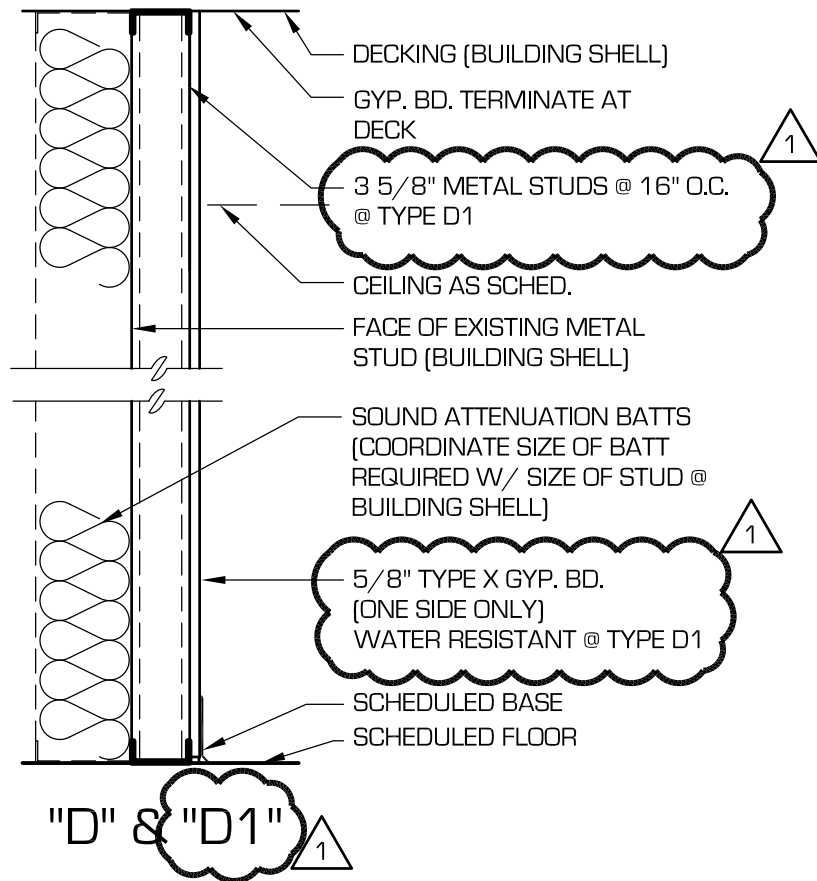
A-101

Revision Number:

1

Drawing No:

ADD#1/SK-01



04 PARTITION TYPES
A-101 SCALE: 1" = 1'-0"

COPYRIGHT

ALL REPORTS, PLANS, SPECIFICATIONS, COMPUTER FILES, FIELD DATA, NOTES AND OTHER DOCUMENTS AND INSTRUMENTS PREPARED BY THE DESIGN PROFESSIONAL AS INSTRUMENTS OF SERVICE SHALL REMAIN THE PROPERTY OF THE DESIGN PROFESSIONAL. THE DESIGN PROFESSIONAL SHALL RETAIN ALL COMMON LAW, STATUTORY AND OTHER RESERVED RIGHTS, INCLUDING THE COPYRIGHT THEREON. COPYING OR REPRODUCTION OF INSTRUMENTS OF SERVICE WITHOUT THE EXPRESS CONSENT OF PREVOT DESIGN SERVICES, APAC IS STRICTLY PROHIBITED.



PREVOT Design
Services
APAC
architecture | planning | interior design

Louisiana
601 Spring Street | Suite A | Shreveport, LA 71101
t: 318.227.9244 | f: 318.227.9044

Texas
PO Box 130261 | Houston, TX 77219
t: 281.501.2420

Project:

JORDAN'S
SWEET SHOPPE
TENANT FINISH OUT
THE WOODLANDS, TX

Date:

15 SEPTEMBER 2014

Project Number:

A0314

Reference Drawing:

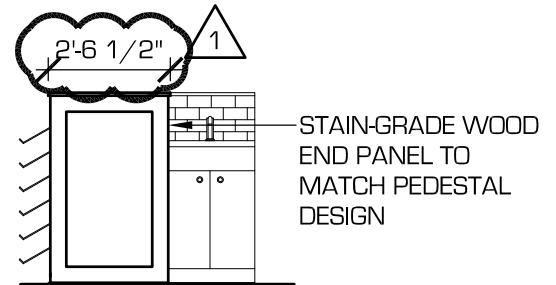
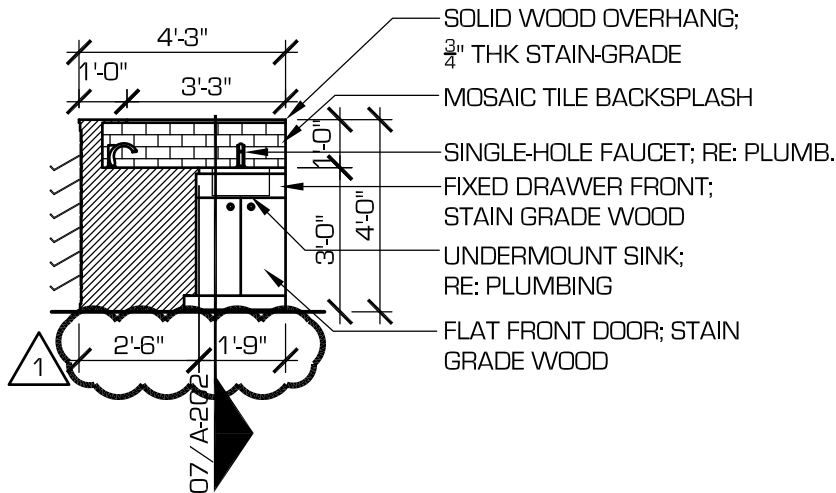
A-101

Revision Number:

1

Drawing No:

ADD#1/SK-02



01
A-202

ELEVATION

SCALE: 1/4"=1'-0"

COPYRIGHT

ALL REPORTS, PLANS, SPECIFICATIONS, COMPUTER FILES, FIELD DATA, NOTES AND OTHER DOCUMENTS AND INSTRUMENTS PREPARED BY THE DESIGN PROFESSIONAL AS INSTRUMENTS OF SERVICE SHALL REMAIN THE PROPERTY OF THE DESIGN PROFESSIONAL. THE DESIGN PROFESSIONAL SHALL RETAIN ALL COMMON LAW, STATUTORY AND OTHER RESERVED RIGHTS, INCLUDING THE COPYRIGHT THEREON. COPYING OR REPRODUCTION OF INSTRUMENTS OF SERVICE WITHOUT THE EXPRESS CONSENT OF PREVOT DESIGN SERVICES, APAC IS STRICTLY PROHIBITED.



PREVOT Design
Services
APAC
architecture | planning | interior design

Louisiana
601 Spring Street | Suite A | Shreveport, LA 71101
t: 318.227.9244 | f: 318.227.9044

Texas
PO Box 130261 | Houston, TX 77219
t: 281.501.2420

Project:

JORDAN'S
SWEET SHOPPE
TENANT FINISH OUT
THE WOODLANDS, TX

Date:

15 SEPTEMBER 2014

Project Number:

A0314

Reference Drawing:

A-202

Revision Number:

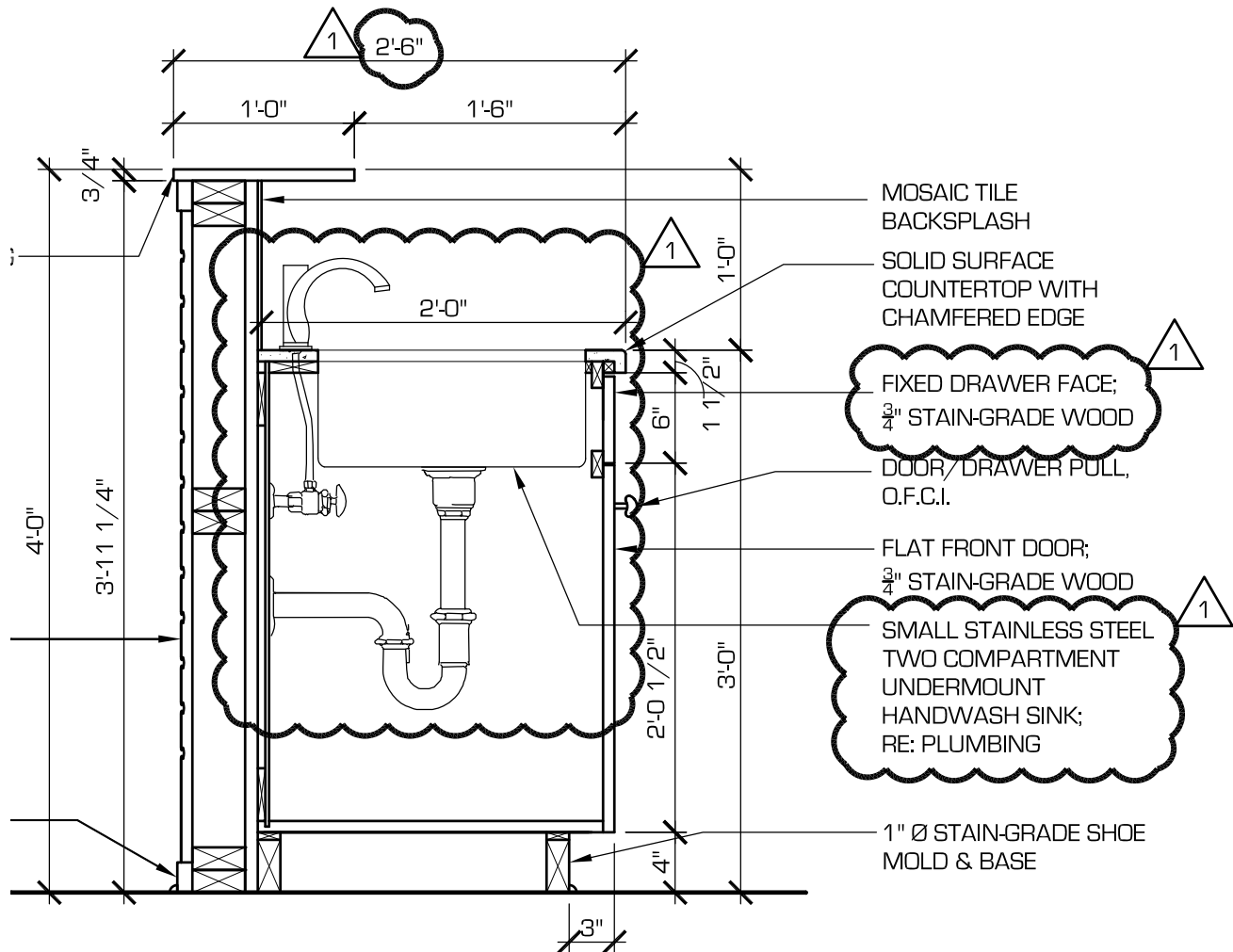
1

Drawing No:

ADD#1/SK-03



ADD#1/SK-04



09 CASH WRAP SECTION
A-202 SCALE: 1"=1'-0"

COPYRIGHT

ALL REPORTS, PLANS, SPECIFICATIONS, COMPUTER FILES, FIELD DATA, NOTES AND OTHER DOCUMENTS AND INSTRUMENTS PREPARED BY THE DESIGN PROFESSIONAL AS INSTRUMENTS OF SERVICE SHALL REMAIN THE PROPERTY OF THE DESIGN PROFESSIONAL. THE DESIGN PROFESSIONAL SHALL RETAIN ALL COMMON LAW, STATUTORY AND OTHER RESERVED RIGHTS, INCLUDING THE COPYRIGHT THEREOF. COPYING OR REPRODUCTION OF INSTRUMENTS OF SERVICE WITHOUT THE EXPRESS CONSENT OF PREVOT DESIGN SERVICES, APAC IS STRICTLY PROHIBITED.



PREVOT Design
Services
APAC
architecture | planning | interior design

Louisiana
601 Spring Street | Suite A | Shreveport, LA 71101
t: 318.227.9244 | f: 318.227.9044

Texas
PO Box 130261 | Houston, TX 77219
t: 281.501.2420

Project:

JORDAN'S
SWEET SHOPPE
TENANT FINISH OUT
THE WOODLANDS, TX

Date:

15 SEPTEMBER 2014

Project Number:

A0314

Reference Drawing:

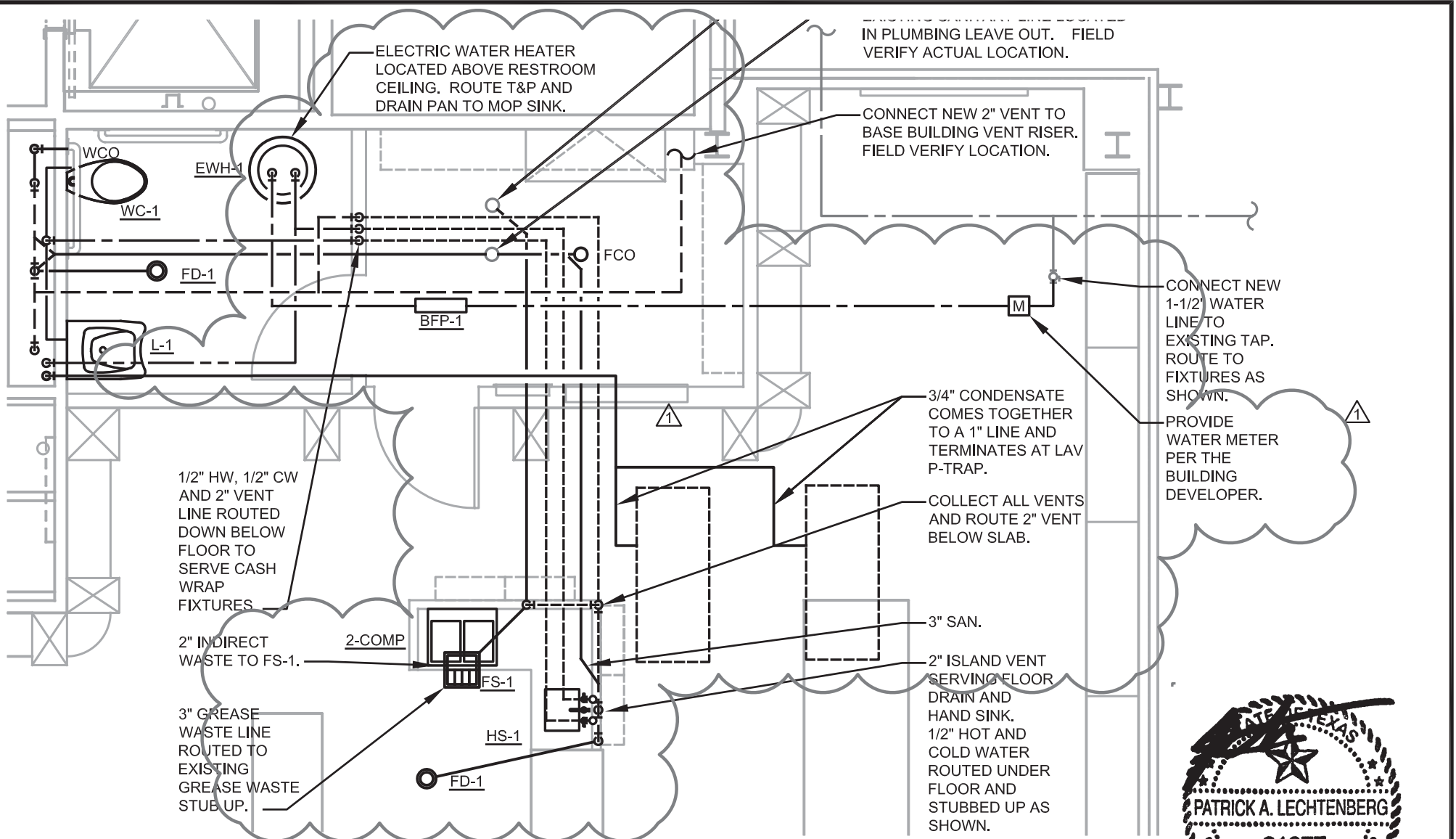
A-202

Revision Number:

1

Drawing No:

ADD#1/SK-05



COPYRIGHT
ALL REPORTS, PLANS, SPECIFICATIONS, COMPUTER FILES, FIELD DATA, NOTES AND OTHER DOCUMENTS AND INSTRUMENTS PREPARED BY THE DESIGN PROFESSIONAL AS INSTRUMENTS OF SERVICE SHALL REMAIN THE PROPERTY OF THE DESIGN PROFESSIONAL. THE DESIGN PROFESSIONAL SHALL RETAIN ALL COMMON LAW, STATUTORY AND OTHER RESERVED RIGHTS, INCLUDING THE COPYRIGHT THEREON. COPYING OR REPRODUCTION OF INSTRUMENTS OF SERVICE WITHOUT THE EXPRESS CONSENT OF PREVOT DESIGN SERVICES, APAC IS STRICTLY PROHIBITED.



LECHTENBERG ENGINEERING, PLLC
11156 Windjammer Dr. • Frisco, TX 75034-9268
P. (214) 469-2766 • F. (469) 546-4463
LE Project #14007
Firm Registration #: 15918



Louisiana
601 Spring Street | Suite A | Shreveport, LA 71101
t: 318.227.9244 | f: 318.227.9044

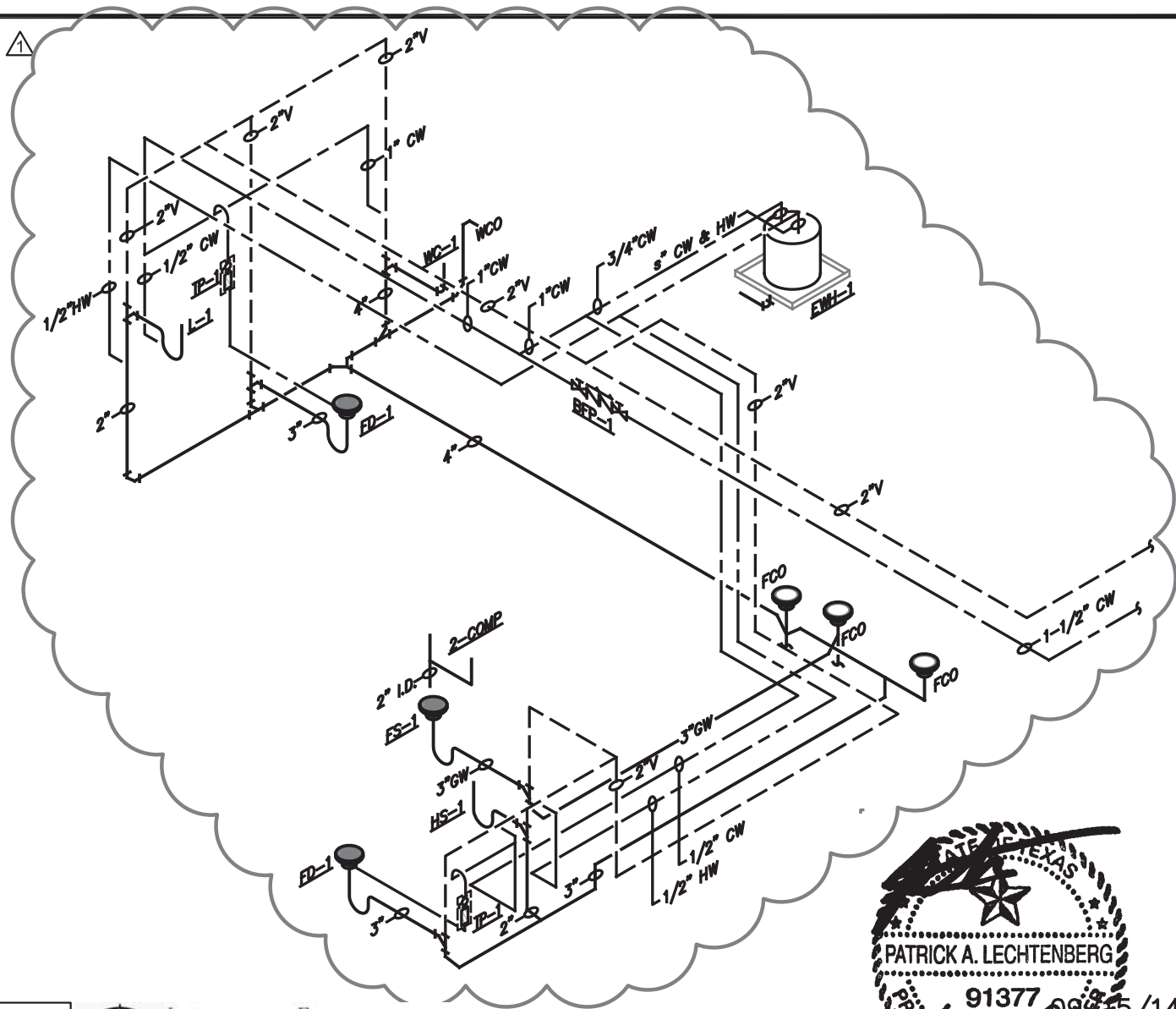
Texas
PO Box 130261 | Houston, TX 77219
t: 281.501.2420

Project:

JORDAN'S
SWEET SHOPPE
TENANT FINISH OUT
THE WOODLANDS, TX

Date: 15 SEPTEMBER 2014
Project Number: A0314
Reference Drawing: P201
Revision Number: 1
Drawing No:

ADD #1 / SK-08



COPYRIGHT
ALL REPORTS, PLANS, SPECIFICATIONS, COMPUTER FILES, FIELD DATA, NOTES AND OTHER DOCUMENTS AND INSTRUMENTS PREPARED BY THE DESIGN PROFESSIONAL AS INSTRUMENTS OF SERVICE SHALL REMAIN THE PROPERTY OF THE DESIGN PROFESSIONAL. THE DESIGN PROFESSIONAL SHALL RETAIN ALL COMMON LAW, STATUTORY AND OTHER RESERVED RIGHTS, INCLUDING THE COPYRIGHT THERETO. COPYING OR REPRODUCTION OF INSTRUMENTS OF SERVICE WITHOUT THE EXPRESS CONSENT OF PREVOT DESIGN SERVICES, APAC IS STRICTLY PROHIBITED.



LECHTENBERG ENGINEERING, PLLC
11156 Windjammer Dr. • Frisco, TX 75034-9268
P. (214) 469-2766 • F. (469) 546-4463
LE Project #14007
Firm Registration #:15918



5/14

PREVOT Design Services APAC
architecture|planning|interior design

Louisiana
601 Spring Street | Suite A | Shreveport, LA 71101
t: 318.227.9244 | f: 318.227.9044

Texas
PO Box 130261 | Houston, TX 77219
t: 281.501.2420

Project:

JORDAN'S
SWEET SHOPPE
TENANT FINISH OUT
THE WOODLANDS, TX

Date: 15 SEPTEMBER 2014
Project Number: A0314
Reference Drawing: P901
Revision Number: 1
Drawing No:

ADD #1 / SK-09

PLUMBING FIXTURES

MARK: TP-1

MAKE: PPP

MODEL: P2

DESCRIPTION: TRAP PRIMER VALVE. PROVIDE TRAP PRIMER AIR GAP EQUAL TO PRECISION PLUMBING PRODUCTS MODEL AG-500.

MARK: WC-1

MAKE: AMERICAN STANDARD

MODEL: 3461.712

DESCRIPTION: "MADERA" VITREOUS CHINA FLOOR MOUNTED. ELONGATED BOWL COMPLETE WITH OPEN FRONT SEAT (LESS COVER), AND SLOAN ROYAL MODEL 111 FLUSH VALVE (1.28 GPF) FLUSH HANDLE ON WIDE SIDE OF STALL. MOUNTING TO COMPLY WITH T.A.S. GUIDELINES AND ANSI A117.1 REQUIREMENTS.

MARK: BFP-1

MAKE: WATTS

MODEL: 007

DESCRIPTION: 1-1/2" DOUBLE CHECK VALVE ASSEMBLY WITH BRONZE BODY. MAXIMUM WORKING PRESSURE OF 175 PSI. COORDINATE WITH LOCAL INSPECTOR FOR SPECIFIC INSTALLATION REQUIREMENTS.

MARK: 2-COMP

MAKE: TBD

MODEL: TBD

DESCRIPTION: SMALL 2-COMPARTMENT SINK, 18 GAUGE, TYPE 304 STAINLESS STEEL. UNDER COUNTER MOUNT TYPE. PROVIDE WITH FAUCET EQUAL TO JUST MODEL JWF-200. VERIFY WITH ARCHITECT BEFORE PURCHASE.

PLUMBING FIXTURE CONNECTION SCHEDULE

DESIGNATION	FIXTURE	C.W.	H.W.	SAN.	VENT
FD/FS	FLOOR DRAIN	1/2"	-	3"	2"
L	LAVATORY	1/2"	1/2"	2"	2"
HS	SINK	1/2"	1/2"	2"	2"
WC	WATER CLOSET	1"	-	4"	2"
2-COMP	2-COMP SINK	1/2"	1/2"	2" I.D.	2"

NOTE: ABOVE SIZES ARE MINIMUM UNLESS OTHERWISE NOTED ON DWG.

GENERAL NOTES:

1. PITCH ALL DRAINAGE PIPING AT 1/4" FOOT MINIMUM UNLESS OTHERWISE NOTED.
2. ALL UNDERGROUND DRAINAGE PIPING SHALL BE MINIMUM OF 2" IN SIZE & 1/4" PER FT. SLOPE.
3. PROVIDE TRAP PRIMER UNITS FOR ALL FLOOR DRAINS WITHOUT INDIRECT WASTE PIPING.

COPYRIGHT

ALL REPORTS, PLANS, SPECIFICATIONS, COMPUTER FILES, FIELD DATA, NOTES AND OTHER DOCUMENTS AND INSTRUMENTS PREPARED BY THE DESIGN PROFESSIONAL AS INSTRUMENTS OF SERVICE SHALL REMAIN THE PROPERTY OF THE DESIGN PROFESSIONAL. THE DESIGN PROFESSIONAL SHALL RETAIN ALL COMMON LAW, STATUTORY AND OTHER RESERVED RIGHTS, INCLUDING THE COPYRIGHT THEREON. COPYING OR REPRODUCTION OF INSTRUMENTS OF SERVICE WITHOUT THE EXPRESS CONSENT OF PREVOT DESIGN SERVICES, APAC IS STRICTLY PROHIBITED.



LECHTENBERG ENGINEERING,

PLLC

11156 Windjammer Dr. • Frisco, TX 75034-9268

P. (214) 469-2766 • F. (469) 546-4463

LE Project #14007

Firm Registration #: 15918



PREVOT Design
Services
APAC
architecture|planning|interior design

Louisiana
601 Spring Street | Suite A | Shreveport, LA 71101
t: 318.227.9244 | f: 318.227.9044

Texas
PO Box 130261 | Houston, TX 77219
t: 281.501.2420

Project:

JORDAN'S
SWEET SHOPPE
TENANT FINISH OUT
THE WOODLANDS, TX

Date: 15 SEPTEMBER 2014
Project Number: A0314
Reference Drawing: P901
Revision Number: 1
Drawing No:

ADD#1/SK-10