

ISSUE:  
1-30-10 ISSUED FOR PERMIT

### PLUMBING SCHEDULE

NO.	UTILITY	SIZE	HEIGHT A.F.F.	LOCATION	BTU/Hr	REMARKS
FS	FLOOR SINK	3"	FLUSH	FLOOR		HUB-SPINE - TO RECEIVE INDIRECT WASTE FROM EQUIPMENT
FD	FLOOR DRAIN	3"	-1/2"	FLOOR		AREA FLOOR DRAIN - SEE DETAIL
FTD	FINNEL FLOOR DRAIN	3"	FLUSH	FLOOR		TO RECEIVE INDIRECT WASTE FROM EQUIPMENT - 4" HIGH FINNEL
HD	HUB DRAIN	3"	4"	FLOOR		FOR INDIRECT WASTE FROM EQUIPMENT
1	HOT & COLD WATER	1/2"	4'-0"	WALL		FOR ON WAP SINK FAUCET - REFER TO REQUIREMENTS
1.1	DRAIN	2"	1"	FLOOR		FOR ON WAP SINK WASTE - VERIFY REQUIREMENTS
4	HOT & COLD WATER	1/2"	20"	WALL		FOR ON HAND SINK FAUCET
4	DRAIN	1 1/2"	16"	WALL		FOR ON HAND SINK WASTE
7	HOT & COLD WATER	1/2"	12"	WALL		FOR ON SINK FAUCET
9	COLD WATER	3/4"	1/2"	WALL		FOR ON DRYER
9.1	DRAIN	3"	16"	WALL		FOR ON DRYER
10	HOT WATER (140° F)	3/4"	5'-0"	WALL		FOR ON DISHWASHER
14	COLD WATER	1/2"	6'-0"	WALL		FOR ON ICE MACHINE, INTERCONNECT THRU FILTER
15	DRAIN	2"	-6"	FLOOR		FOR ON FLOOR THROUGH WASTE - SEE DETAIL
16	HOT & COLD WATER	1/2"	12"	WALL		FOR ON SINK FAUCET
21	COLD WATER	1/2"	12"	WALL		FOR FILL FAUCET
26	NATURAL GAS	3/4"	36"	WALL		FOR ON EBART (8) BURNER RANGE
28	NATURAL GAS	3/4"	36"	WALL		FOR ON BESH COOKER
30	COLD WATER	1/2"	12"	WALL		FOR ON BESH COOKER FAUCET
30	NATURAL GAS	3/4"	36"	WALL		FOR ON BROILER
33	NATURAL GAS	3/4"	36"	WALL		FOR ON SQUAWMER
34	NATURAL GAS	3/4"	36"	WALL		FOR ON SQUAWMER
35	NATURAL GAS	3/4"	36"	WALL		FOR ON SQUAWMER
36	NATURAL GAS	3/4"	36"	WALL		FOR ON CHAMBOLLER
39	NATURAL GAS	3/4"	36"	WALL		FOR ON FRYER
40	NATURAL GAS	1/2" (2), 3/4"	55,000 EACH	WALL		FOR ON FLOOR (4) BURNER RANGE
41	COLD WATER	1/2"	12"	WALL		FOR ON CONNECTION OPEN
42	DRAIN	2"	-6"	FLOOR		FOR ON FLOOR THROUGH WASTE - SEE DETAIL
44	HOT & COLD WATER	1/2"	12"	WALL		FOR ON SINK FAUCET
47	HOT & COLD WATER	1/2"	12"	WALL		FOR ON SINK FAUCET
54	HOT & COLD WATER	1/2"	12"	WALL		FOR ON SINK FAUCET
61	COLD WATER	1/2"	48"	WALL		FOR ON COFFEE BREWER
62	COLD WATER	1/2"	48"	WALL		FOR ON ICE BREWER
66	HOT & COLD WATER	1/2"	8"	WALL		FOR ON SINK FAUCET
67	HOT & COLD WATER	1/2"	20"	WALL		FOR ON HAND SINK FAUCET
67	DRAIN	1 1/2"	16"	WALL		FOR ON HAND SINK WASTE
69	HOT & COLD WATER	1/2"	8"	WALL		FOR ON SINK FAUCET
70	HOT WATER (140° F)	3/4"	12"	WALL		FOR ON DISHWASHER
74	HOT & COLD WATER	1/2"	8"	WALL		FOR ON SINK FAUCET
78	NATURAL GAS	3/4"	18"	WALL		FOR ON PIZZA OVEN

### PLUMBING LEGEND

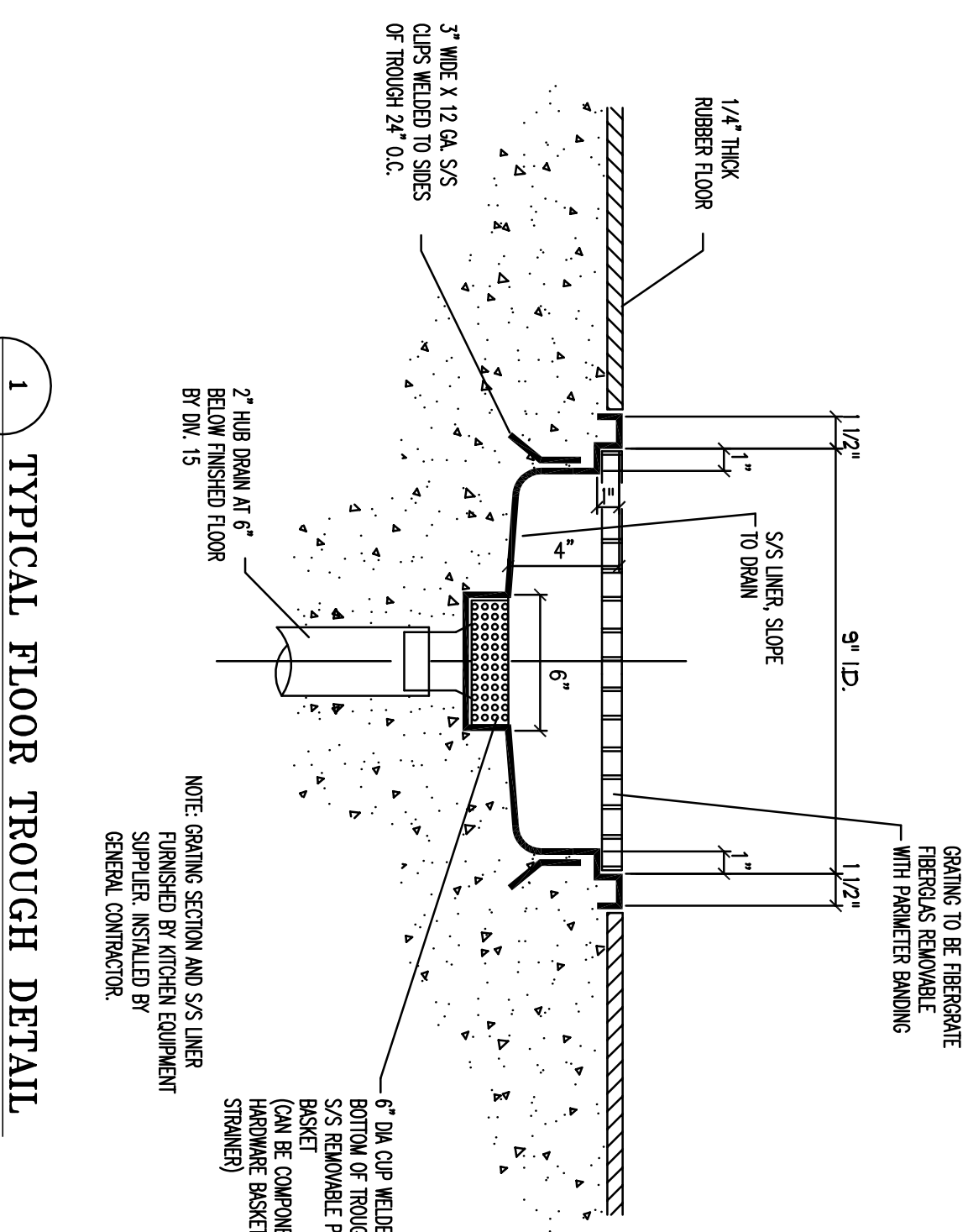
SYMBOL	DESCRIPTION
SAN	SAINTORY OR WASTE PIPING ABOVE GRADE (SAN)
SAN	SAINTORY OR WASTE PIPING BELOW GRADE (SAN)
GW	GREASE WASTE PIPING (GW)
GW	GREASE WASTE PIPING BELOW GRADE (GW)
VENT	VENT PIPING ABOVE OR BELOW GRADE (V)
CM	COLD WATER PIPING (CM)
HM	HOT WATER RETURN PIPING (HM)
HW	HOT WATER PIPING (HW)
TP	TEMPERED WATER (TW)
TP	TRAP PRIMER LINE (TP)
GAS	NATURAL GAS PIPING (G)
CV	GAS VENT PIPING (GV)
DIR	FLOW DIRECTIONAL ARROW
SH	SHUT-OFF VALVE
BV	BALANCING VALVE (BV)
SV	SOLENOID VALVE (SV)
BV	BALL VALVE (BV)
FP	GAS PLUG VALVE (FP)
HS	HORIZONTAL SWING CHECK
Y	Y-STRAINER
RED	REDUCER OR INCREASER
ECC	ECCENTRIC REDUCER
PRP	REDUCED PRESSURE BACKFLOW PREVENTER (RP2)
PIP	PIPING DOWN
RI	RISE OR DROP PIPING
UP	PIPING UP -OR- PIPING UP & DOWN
END	CAP ON END OF PIPE
CEN	CLEANOUT (WALL OR CEILING) (CO)
CEN	FLOOR CLEANOUT (FO)
EXT	EXTerior CLEANOUT WITH 18" X 18" X 4" CONCRETE PAD (EO)
PRV	PRESSURE REDUCING VALVE (PRV)
BR	BRANCH CONNECTION OUT OF TOP
BT	BRANCH CONNECTION OUT OF BOTTOM
BS	BRANCH CONNECTION OUT OF SIDE
WVC	WYE & 1/8TH BEND BRANCH CONNECTION
WB	WYE BRANCH CONNECTION
H	HOSE BIBB
PG	PRESSURE GAUGE WITH COCK
TM	THERMOMETER
GR	GAS PRESSURE REGULATOR
TC	TEST COCK
GM	GAS METER
WH	WALL HYDRANT
VIR	VALVE IN RISE
TRV	TRIP VALVE
TRV	TEMPERATURE & PRESSURE RELIEF VALVE
VR	VACUUM RELIEF VALVE
ANG	ANGLE VALVE
REF	REFER TO KEYED NOTE
1	FLOOR SINK (FS)
2	FLOOR DRAIN (FD)
3	FLOOR DRAIN WITH P-TRAP (FTD)
4	FLOOR DRAIN WITH P-TRAP AT 45° ANGLE (FD)
5	HUB DRAIN (HD)
6	ACCESS PANEL FOR TRAP PRIMER
7	ACCESS PANEL LOCATION SYMBOL
8	SHOCK ABSORBER WITH ACCESS PANEL
9	AIR CHAMBER
10	EXISTING
11	NEW
12	CONNECT NEW TO EXISTING
13	INVERT ELEVATION
14	QUARTER OF AN INCH SLOPE
15	1/8TH OF AN INCH SLOPE
16	1/16TH OF AN INCH SLOPE
17	DELTA CHANGE SYMBOL
18	RESER FLAG

### PLUMBING SYMBOLS/ABBREVIATIONS

●	HOT WATER	FD	FLOOR DRAIN
●	COLD WATER	FTD	FINNEL FLOOR DRAIN
○	DRAIN	FS	FLOOR SINK
○	CONNECTION	HD	HUB DRAIN
○	FLOOR DRAIN	SS	STEAM SUPPLY
○	FLOOR SINK	SR	STEAM RETURN
□	FLOOR SINK	EL	ELEVATION ABOVE FINISHED FLOOR
□	FLOOR SINK	STB	STUB UP ABOVE FINISHED FLOOR
□	GAS CONNECTION	GPH	GALLONS PER HOUR
□	GAS SUPPLY	GPM	GALLONS PER MINUTE
□	PIPE ROOFING	FSI	FOOTING PER SQUARE INCH
HM	HOT WATER	BR	BRANCH TO CONNECTION POINT AND CONNECT EQUIPMENT
CM	COLD WATER	BFC	BELT FROM ABOVE
DR	DRAIN	DA	DOWN FROM ABOVE
AFT	ABOVE FINISHED FLOOR		
BEF	BELOW FINISHED FLOOR		

### PLUMBING NOTES

- PLUMBER TO VERIFY ALL WASTE LINES, GAS LINES, WASTE LINES, ETC. TO FULLY CONNECT ALL EQUIPMENT AND SANITARY UNITS FROM UNITS TO DRAINS AND THESE LINES TO BE NO SMALLER THAN THE SIZE OUT OF THE FRONT. GAS LINES, ALL VALVES, CUTOFFS, TRAPS, POSITIVE SHOCK ELIMINATORS, PRESSURE REGULATORS AND WATERLESS NECESSARY TO CONNECT ALL LINES. UNLESS OTHERWISE SPECIFIED, ALL CONNECTIONS AND EQUIPMENT SHALL BE TO BE HANGERS BY THE KITCHEN EQUIPMENT SUPPLIER AS OUTLET FINISH IN FINISHES AND STAYOUT TIE ARE TO BE OUTLINE IN THE TRAP SPECIFICATIONS. ALL WORK TO BE CONFORMING TO ALL APPLICABLE CODES AND ALL WORK TO BE CONFORMING TO INSTALLATION AND COMPANY OF EQUIPMENT CONNECTIONS OR ERRORS ON THE SCHEDULE DO NOT RELIEVE THE PLUMBING CONTRACTOR FROM COMPLETE FINAL PLUMBING INSPECTION.
- ALL OUTLETS AND CONNECTIONS SHOWN RELATE TO KITCHEN EQUIPMENT ONLY, REFER TO ARCHITECT/ENGINEERING PLANS FOR ADDITIONAL REQUIREMENTS.
- ALL DIMENSIONS GIVEN ARE FROM COLUMN CENTRALS AND/OR FINISHED WALLS AND ARE IN INCHES TO 4'-0". ALL FINISHES SHOWN ARE TO BE FINISH INSIDE WALLS (EXCEPT SUB-UPS) LOCATIONS INDICATE POINT OF EXIT FROM WALLS, CEILING OR FLOORS.
- ALL FLOOR DRAINS TO SET 1/2" BELOW FINISHED FLOOR UNLESS OTHERWISE NOTED, DO NOT SLOPE FLOORS SO CLOSE TO DRAIN AS TO BE 2" FROM FINISHED FLOOR SURFACE. ALL FLOOR DRAINS TO BE SET 2" FROM FINISHED FLOOR SURFACE.



1 TYPICAL FLOOR TROUGH DETAIL  
RS-20 NO SCALE

PROJECT NAME  
GUADALUPANA RESTAURANT



PROJECT ADDRESS  
20 WINTERWAY  
THE WOODLANDS, TEXAS

PROJECT NUMBER  
SHEET NAME  
PLUMBING SCHEDULES  
SHEET NUMBER



9875 KOK Fwy., #200  
Houston, Texas 77074  
Tel: 713.722.7071  
Fax: 713.722.7072

CONSULTANTS  
HQS SITE & ASSOCIATES  
MEP Engineers

P2.00

NOTE: NOT ALL SYMBOLS MAY APPLY TO THIS PROJECT.



Holtek & Associates, Inc.  
Consulting Engineers - Texas Reg. No. 15443  
Houston, Texas 77071 (713) 992-1371  
www.holtek.com