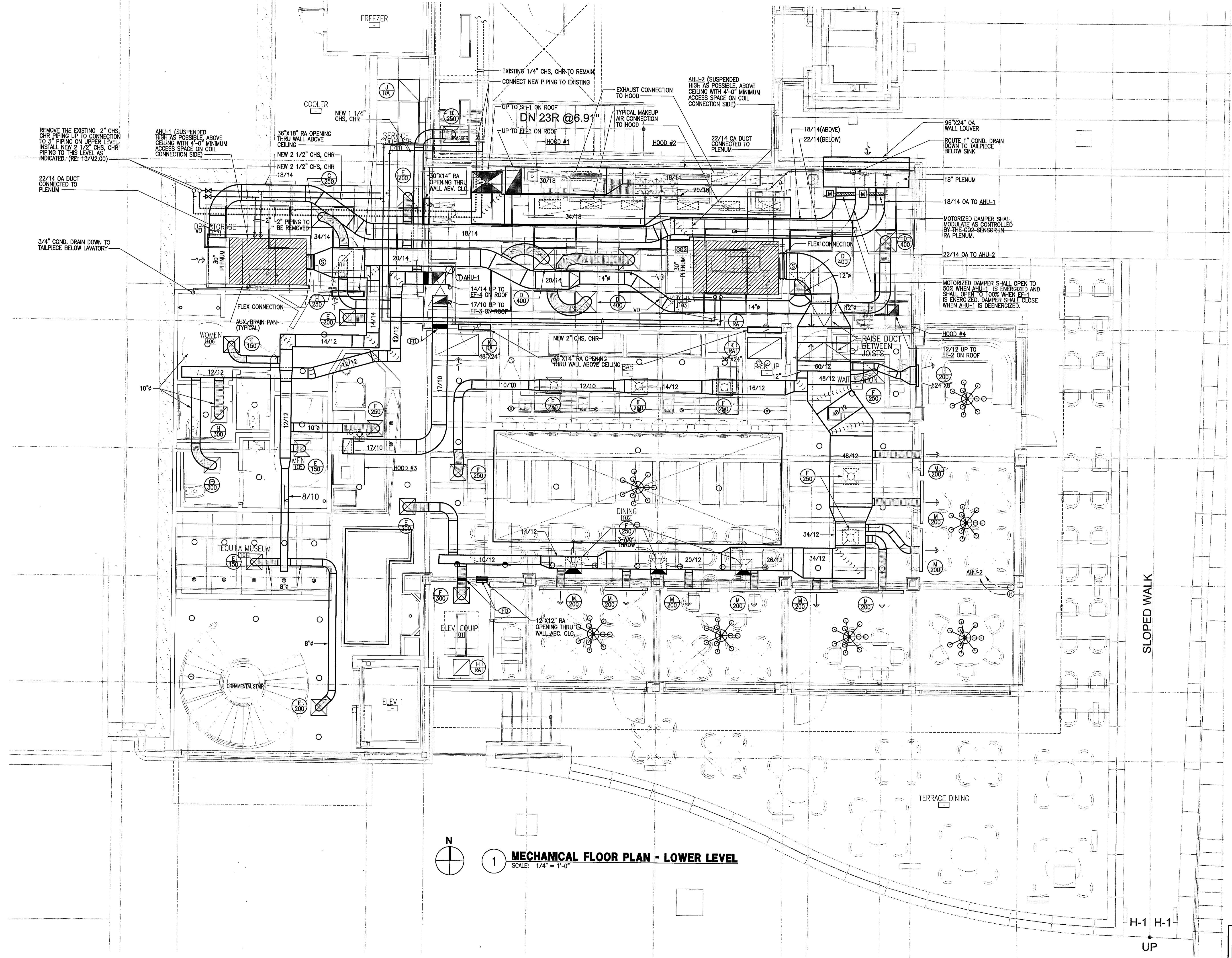


ISSUE
09-10-10 ISSUED FOR PERMIT



1 MECHANICAL FLOOR PLAN - LOWER LEVEL
SCALE: 1/4" = 1'-0"

HARRELL
ARCHITECTS, LP

9575 Katy Frwy., #200
Houston, Texas 77024
tel: 713.722.7071
fax: 713.722.7072

CONSULTANTS
HOLSTE & ASSOCIATES
MEP Engineers

PROJECT NAME
GUADALUPANA RESTAURANT



PROJECT ADDRESS
20 WATERWAY
THE WOODLANDS, TEXAS

PROJECT NUMBER

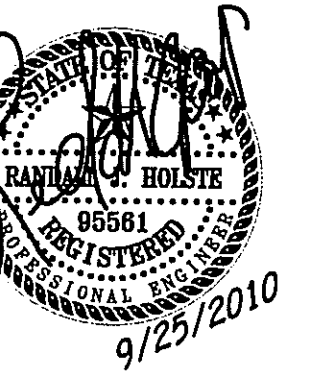
SHEET NAME

MECHANICAL FLOOR PLAN

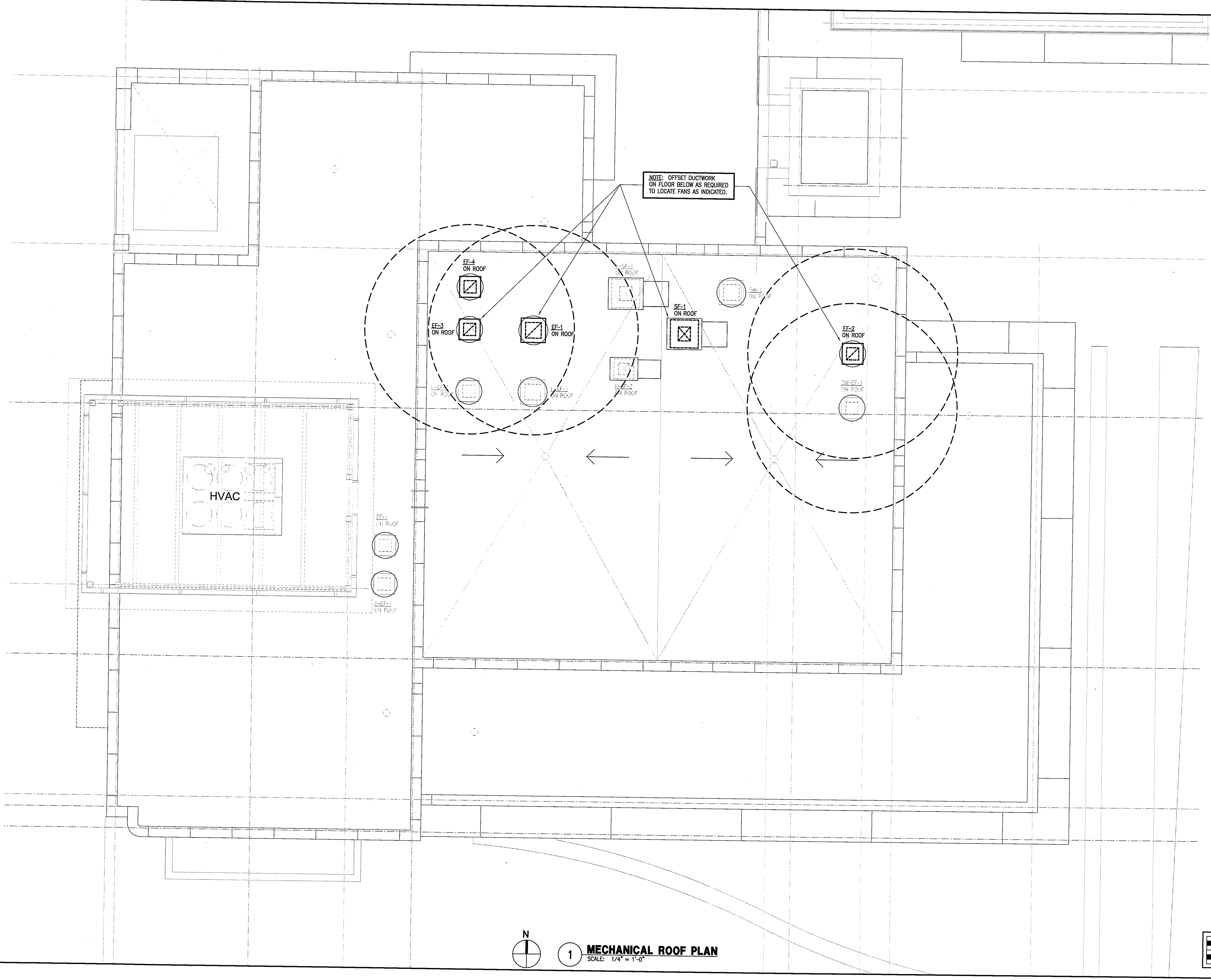
SHEET NUMBER

Holste & Associates, Inc.
Consulting Engineers - Texas Reg. F-5443
6071 Southwest Freeway, Suite 850
Houston, Texas 77074 (713) 995-1351
www.holstemep.com

M1.00

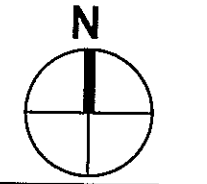


ISSUE
09-10-10 ISSUED FOR PERMIT



NOTE: OFFSET DUCTWORK
ON FLOOR BELOW AS REQUIRED
TO LOCATE FANS AS INDICATED.

HVAC



1

MECHANICAL ROOF PLAN
SCALE: 1/4" = 1'-0"

HARRELL
ARCHITECTS, LP

9575 Katy Freeway, #200
Houston, Texas 77024
tel: 713.722.7071
fax: 713.722.7072

CONSULTANTS
HOLSTE & ASSOCIATES
MEP Engineers

PROJECT NAME
GUADALUPANA RESTAURANT



PROJECT ADDRESS
20 WATERWAY
THE WOODLANDS, TEXAS

PROJECT NUMBER

SHEET NAME

MECHANICAL ROOF PLAN

SHEET NUMBER

M1.01

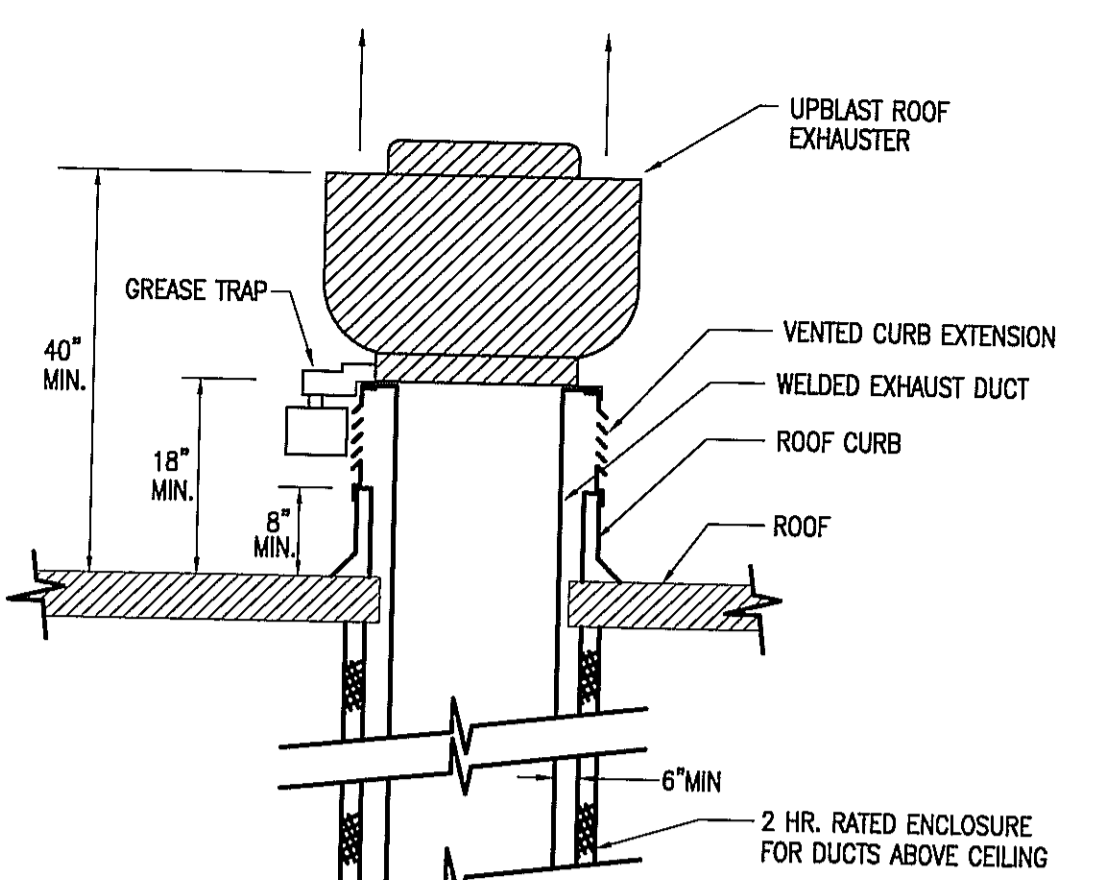
Holste & Associates, Inc.
Consulting Engineers - Texas Reg. P-5443
6671 Southwest Freeway, Suite 850
Houston, Texas 77074 (713) 995-1351
www.holsteinc.com

MECHANICAL GENERAL NOTES

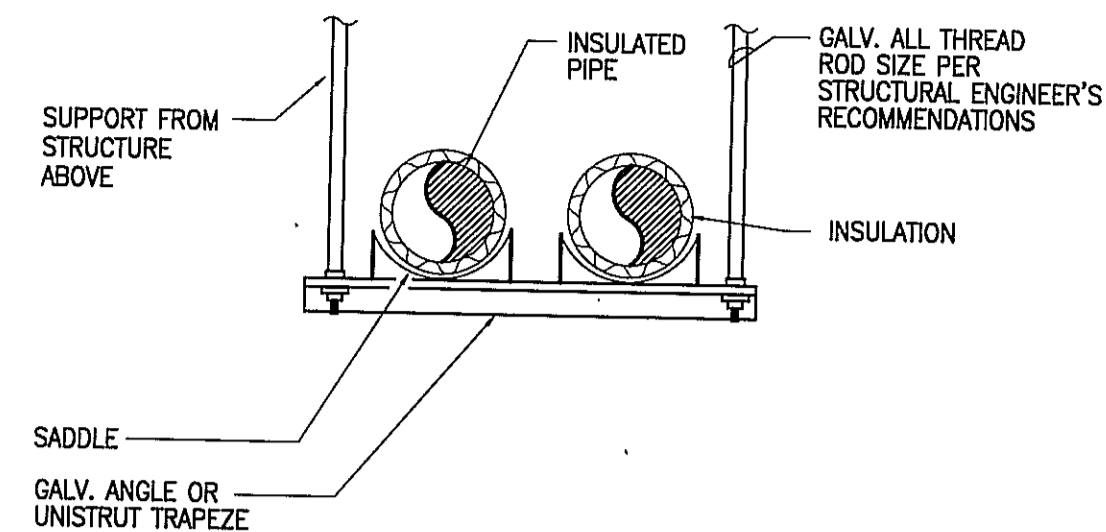
- CODES, RULES AND REGULATIONS - DESIGN OF SYSTEM
 - ALL WORK AND MATERIALS SHALL BE IN FULL ACCORDANCE WITH ALL APPLICABLE FEDERAL, STATE, AND LOCAL LAWS, ORDINANCES AND CODES.
 - WHEN THE DRAWINGS CALL FOR MATERIALS OR CONSTRUCTION OF A BETTER QUALITY OR LARGER SIZES THAN REQUIRED BY THE ABOVE MENTIONED CODES AND RULES, WORK SHALL BE AS SPECIFIED OR SHOWN RATHER THAN AS REQUIRED BY CODE. ALL ITEMS OR FEATURES OF THE MECHANICAL SYSTEMS REQUIRED BY CODE SHALL BE INCLUDED, EVEN THOUGH NOT SPECIFIED HEREIN.
 - INSTALLATION OF THE SYSTEMS SHALL BE IN ACCORDANCE WITH THE ABOVE MENTIONED CODES AND REGULATIONS AND ALSO SHALL CONFORM TO GOOD, ACCEPTED MECHANICAL PRACTICES.
- PROVIDE AND INSTALL VOLUME DAMPERS IN ALL BRANCH DUCTS.
- FLEXIBLE CONNECTIONS AT SUPPLY AND RETURN AIR OPENINGS OF ALL AIR CONDITIONING UNITS.
- FLEXIBLE DUCTS TO BE GLASS-FLEX 8'-0", MAXIMUM IN LENGTH, WHERE APPLICABLE.
- COORDINATE EXACT LOCATION OF ALL AIR OUTLETS AND INLETS (DIFFUSERS, REGISTERS AND GRILLES) WITH APPROPRIATE ARCHITECTURAL PLAN, AND VERIFY THEIR LOCATION WITH ARCHITECT ON THE JOB SITE BEFORE INSTALLATION, COLOR AS DIRECTED BY OWNER.
- AUTOMATIC TEMPERATURE CONTROL DEVICE FOR REGULATION OF SPACE TEMPERATURE SHALL BE CAPABLE OF BEING SET FROM 55 TO 85°F, AND HAVE THE ABILITY TO OPERATE THE HEATING AND COOLING IN SEQUENCE. CONTROL SHALL BE ADJUSTABLE TO PROVIDE A RANGE OF UP TO 5°F BETWEEN FULL HEATING AND FULL COOLING AND HAVE CAPABILITY OF TERMINATING ALL HEATING AT A TEMPERATURE NO MORE THAN 70°F, AND COOLING AT A TEMPERATURE NOT LESS THAN 78°F.
- APPLIANCES DESIGNED TO BE FIXED IN POSITION SHALL BE FASTENED IN PLACE.
- A MAINTENANCE LABEL SHALL BE AFFIXED TO MECHANICAL EQUIPMENT AND A MAINTENANCE MANUAL SHALL BE PROVIDED FOR THE OWNERS USE.
- PROVIDE ACCESS PANEL FOR ALL CEILING MOUNTED EQUIPMENT & VOLUME DAMPERS.
- PROVIDE MIN. 10'-0" SEPARATION BETWEEN POINT OF EXHAUST AND ANY FRESH AIR INTAKE, OR A/C UNIT OSA INTAKE.
- PROVIDE FIRE DAMPER OR SMOKE/FIRE DAMPER WHERE DUCT PENETRATES FIRE RATED CEILING OR WALL IF APPLICABLE.
- TRANSVERSE JOINTS FOR ALL AIR SUPPLY DUCTS INSTALLED WHERE AIR LEAKAGE WOULD BE NON-BENEFICIAL TO THE OCCUPIED AREA, TEMPERATURE REQUIREMENTS SHALL BE SEALED WITH APPROVED MASTIC OR TAPE.
- ALL DUCT SIZES SHOWN ON THE FLOOR PLANS ARE CLEAR INSIDE DIMENSIONS. CONTRACTOR SHALL ENLARGE DUCT SIZE IN ORDER TO ACCOMMODATE LINING INSIDE OF DUCT IF REQUIRED.
- THE MECHANICAL CONTRACTOR SHALL SECURE AND PAY FOR ALL REQUIRED PERMITS AND FEES.
- THE PROJECT SHALL BE AIR BALANCED AND A COPY OF THE FINAL REPORT SHALL BE PRESENTED TO THE TENANT AND OWNER.
- ENERGY CONSERVATION STANDARDS FOR NEW NONRESIDENTIAL BUILDINGS HAVE BEEN REVIEWED AND DESIGN SUBSTANTIALLY CONFORMS TO THEM.
- EACH SINGLE SYSTEM PROVIDING HEATING OR COOLING AIR IN EXCESS OF 2,000 CFM SHALL BE EQUIPPED WITH AN AUTOMATIC SHUT-OFF. THE SMOKE DETECTOR SHALL BE INSTALLED IN THE MAIN SUPPLY AIR DUCT DOWNSTREAM OF THE FILTERS OR THEY MAY BE INSTALLED IN EACH ROOM OR SPACE SERVED BY THE SUPPLY AIR DUCT. DETECTORS SHALL ALSO BE INSTALLED IN THE MAIN RETURN DUCT (IF REQ'D. BY THE LOCAL CODE) AHEAD OF OSA INTAKE. SEE CODE FOR EXEMPTIONS AND LOCAL AUTHORITY FOR CODE INTERPRETATION, OR AS INDICATED ON PLAN.
- ALL EQUIPMENT AND APPLIANCES ARE LISTED PRODUCTS, AND WILL BE INSTALLED ACCORDING TO THEIR LISTING, AND ALL LISTING INFORMATION WILL BE AVAILABLE FOR INSPECTION.
- DUCTWORK CONSTRUCTION DETAILS:
 - MATERIAL: GAL. SHEET METAL GAGE 26 FOR UP TO 14" & GAGE 24 FOR UP TO 23" DUCT.
 - SUPPORT: UP TO 10" DUCT SAME GAGE AS GAL. STEEL DUCT, 1" WIDE OR (NO. 18 GAGE GAL. STEEL WIRE) ON 10 FT. CENTERS, AND UP TO 40" SAME GAGE AS GAL. STEEL DUCT, 1" WIDE OR (NO. 8 GAGE GAL. STEEL WIRE) TIED TO 1" GAL. STEEL BAND AROUND DUCT ON 10 FT. CENTERS.
 - HANGER: UP TO 36" DUCT 1/4" ROUND ROD OR 1" X 1" X 1/8" ANGLE.
- REFER TO DETAILS OR GUIDELINES FOR MECHANICAL CONSTRUCTION REQUIREMENTS. INSTALL IN FULL ACCORDANCE WITH PROPER CODES AND GUIDELINES.
- COORDINATE IN THE FIELD THE EXACT LOCATION OF ALL CEILING MOUNTED GRILLES AND DIFFUSERS WITH LIGHT FIXTURES AND (ARCHITECTURAL) REFLECTED CEILING PLAN.
- ALL EXTERIOR BRACKETS, CLAMPS, AND HANGERS SHALL BE HOT DIPPED GALVANIZED. COAT ALL CUT ENDS AND WELDS WITH "ZRC" COLD GALVANIZING COMPOUND.
- SHOP PRIME ALL MISCELLANEOUS INTERIOR BRACKETS AND HANGERS UNLESS GALVANIZED OR STAINLESS STEEL.

CHILLED WATER SYSTEM GENERAL NOTES

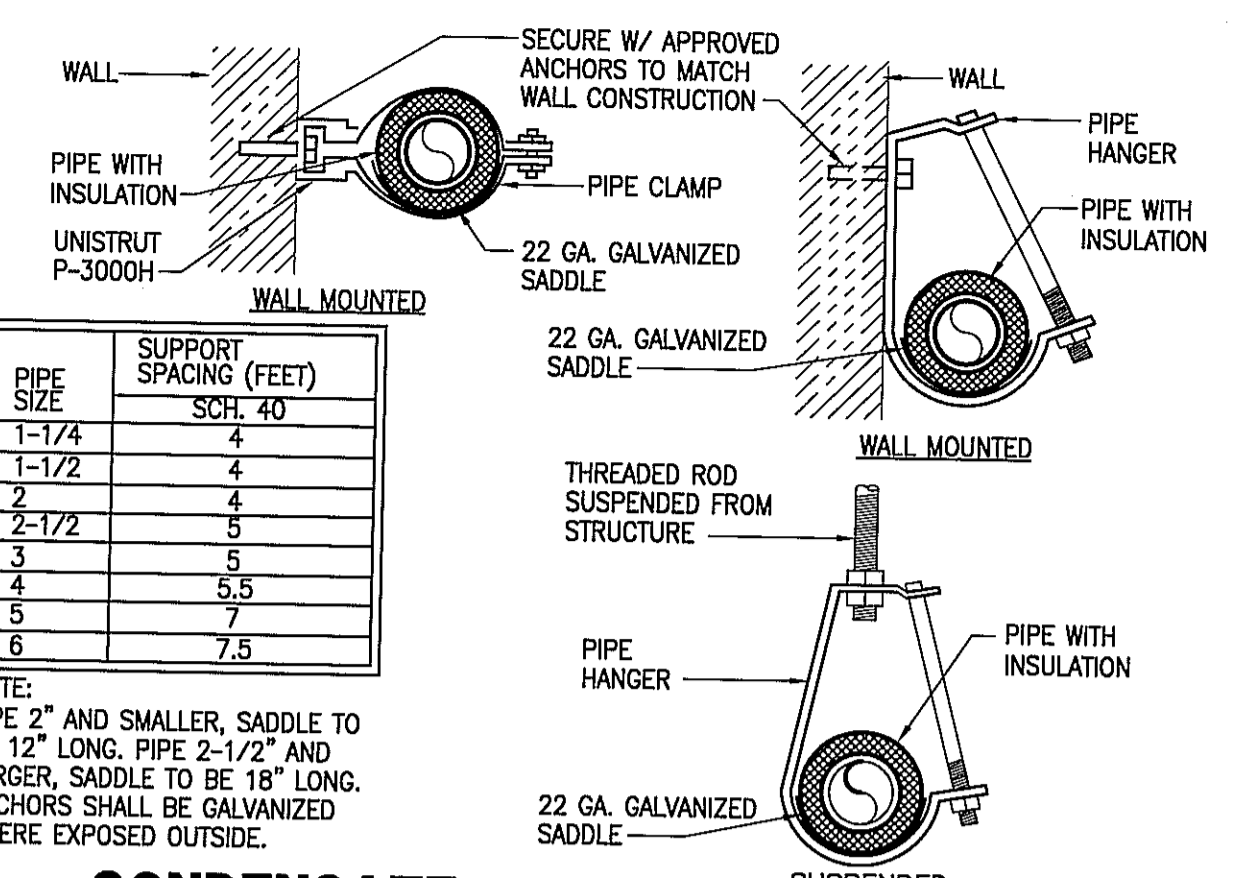
- ALL MATERIALS SHALL COMPLY WITH EXISTING CENTER STANDARDS.
- ALL CHILLED WATER PIPING SHALL BE BLACK SCHEDULE 40 STEEL PIPE CONFORMING TO ASTM A53 OR A120 WITH ANSI/ASTM B16.3 MALLEABLE IRON FITTINGS AND SCREWED JOINTS.
- MODULATING CHILLED WATER CONTROL VALVES SHALL BE OF SAME MANUFACTURER AS EXISTING AT CENTER.
- ALL VALVES SHALL BE OF SAME MANUFACTURER AS EXISTING IN CENTER. ALL VALVES IN INSULATED LINES SHALL HAVE EXTENDED STEMS BEYOND INSULATION.
- CHILLED WATER PIPING SHALL BE INSULATED WITH INSULATION HAVING A CONDUCTIVITY (k) NOT EXCEEDING 0.27 BTU PER IN./FT.-SQ.-FT. WITH JACKET WITH VAPOR BARRIER. THICKNESS SHALL BE 1" FOR PIPE SIZES LESS THAN 1-1/2" AND 1-1/2" FOR PIPE SIZES 1-1/2" THROUGH 4".



11 ROOFTOP KITCHEN HOOD EXHAUST FAN
SCALE: NO SCALE



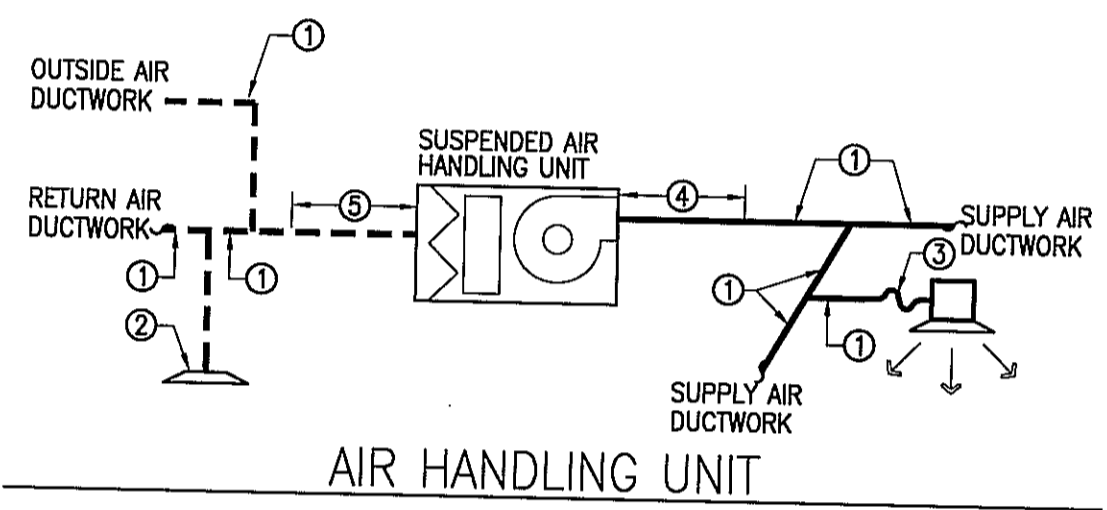
8 PIPE HANGER DETAIL
SCALE: NONE



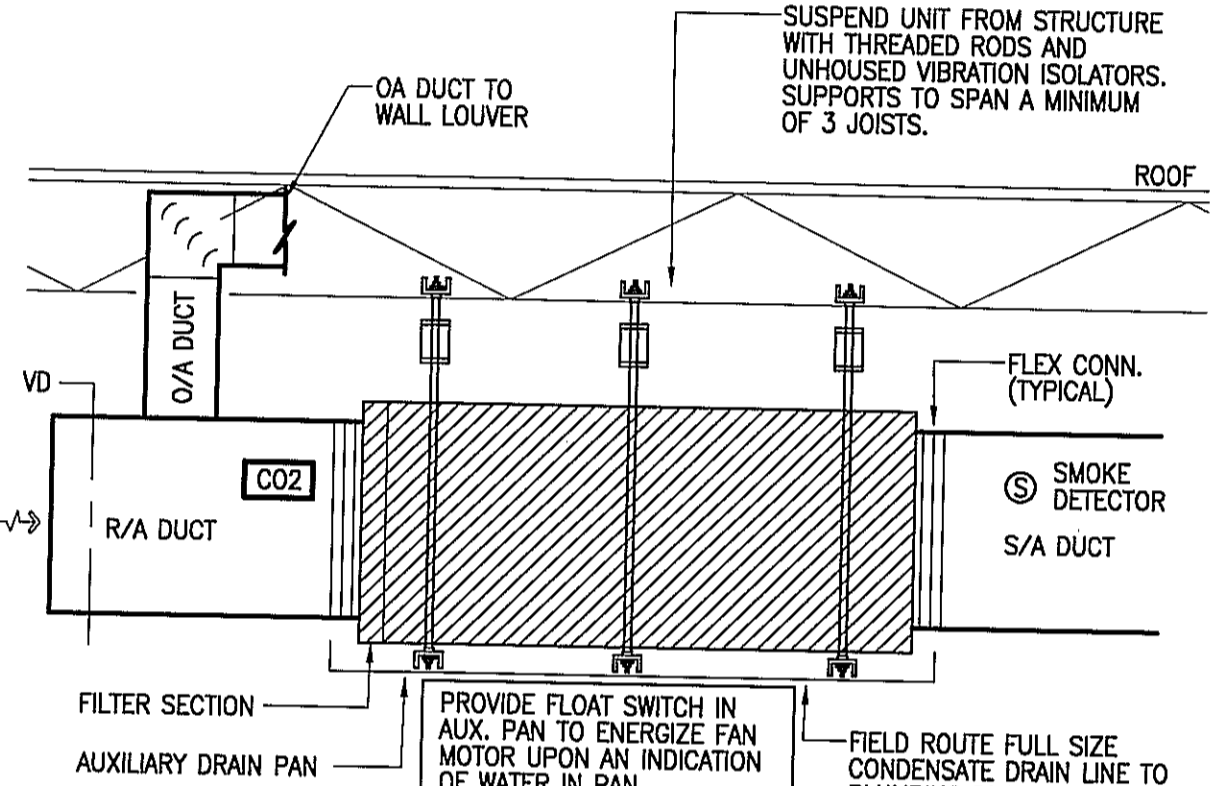
4 CONDENSATE DRAIN SUPPORT & INSULATION
SCALE: NONE

PIPE SIZE	SUPPORT SPACING (FEET) SCH. 40
1-1/4"	4
1-1/2"	4
2"	4
2-1/2"	5
3"	5
4"	5.5
5"	7
6"	7.5

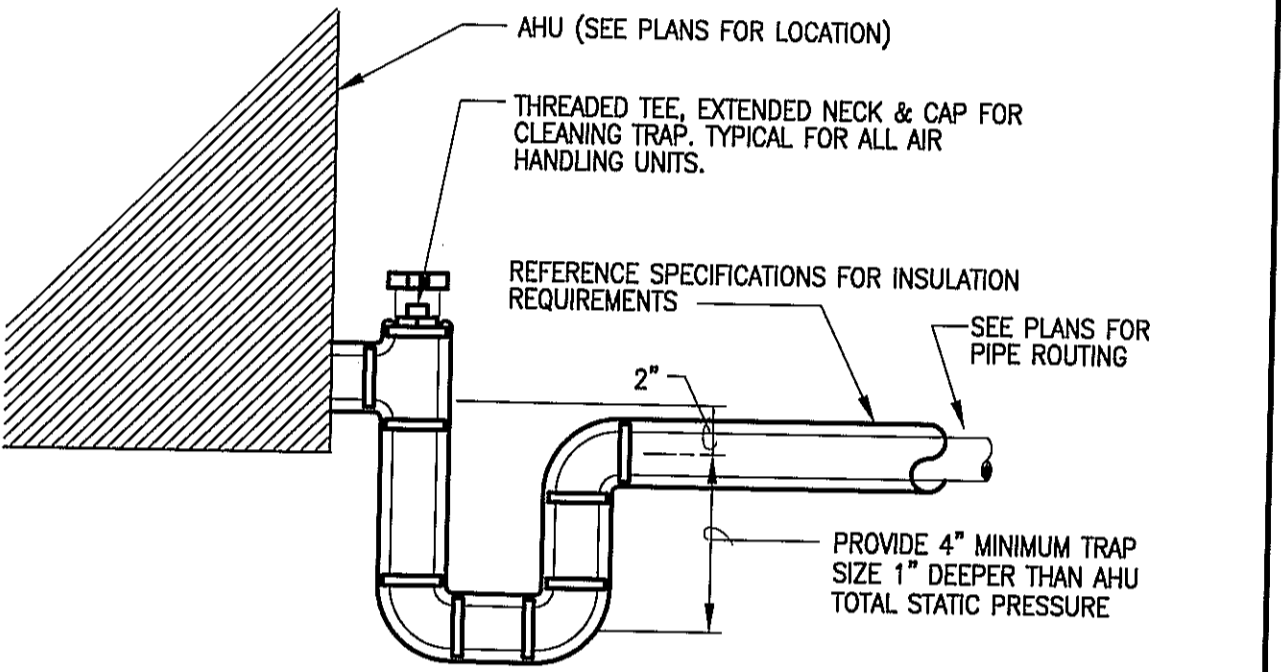
NOTE: PIPE 2" AND SMALLER, SADDLE TO BE 12" LONG. PIPE 2-1/2" AND LARGER, SADDLE TO BE 18" LONG. ANCHORS SHALL BE GALVANIZED WHERE EXPOSED OUTSIDE.



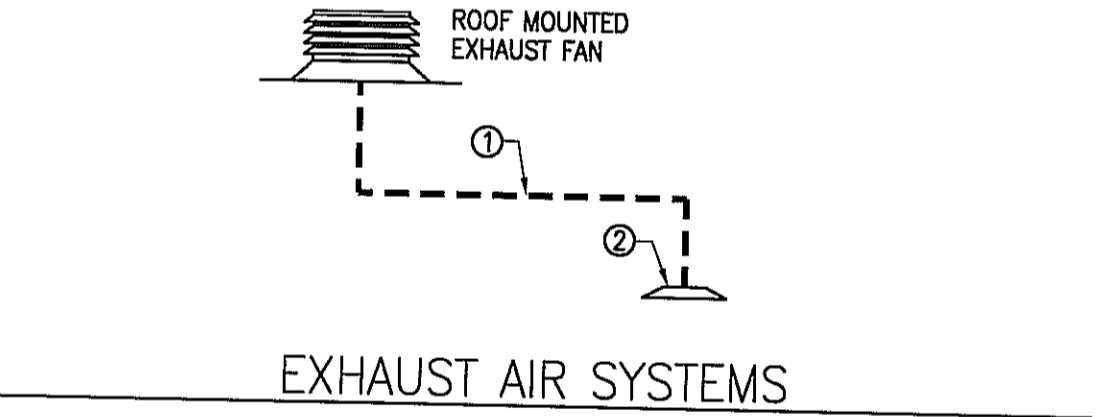
7 AIR HANDLING UNIT DETAIL
SCALE: NONE



3 CONDENSATE DRAIN PIPING AT AHU
SCALE: NONE

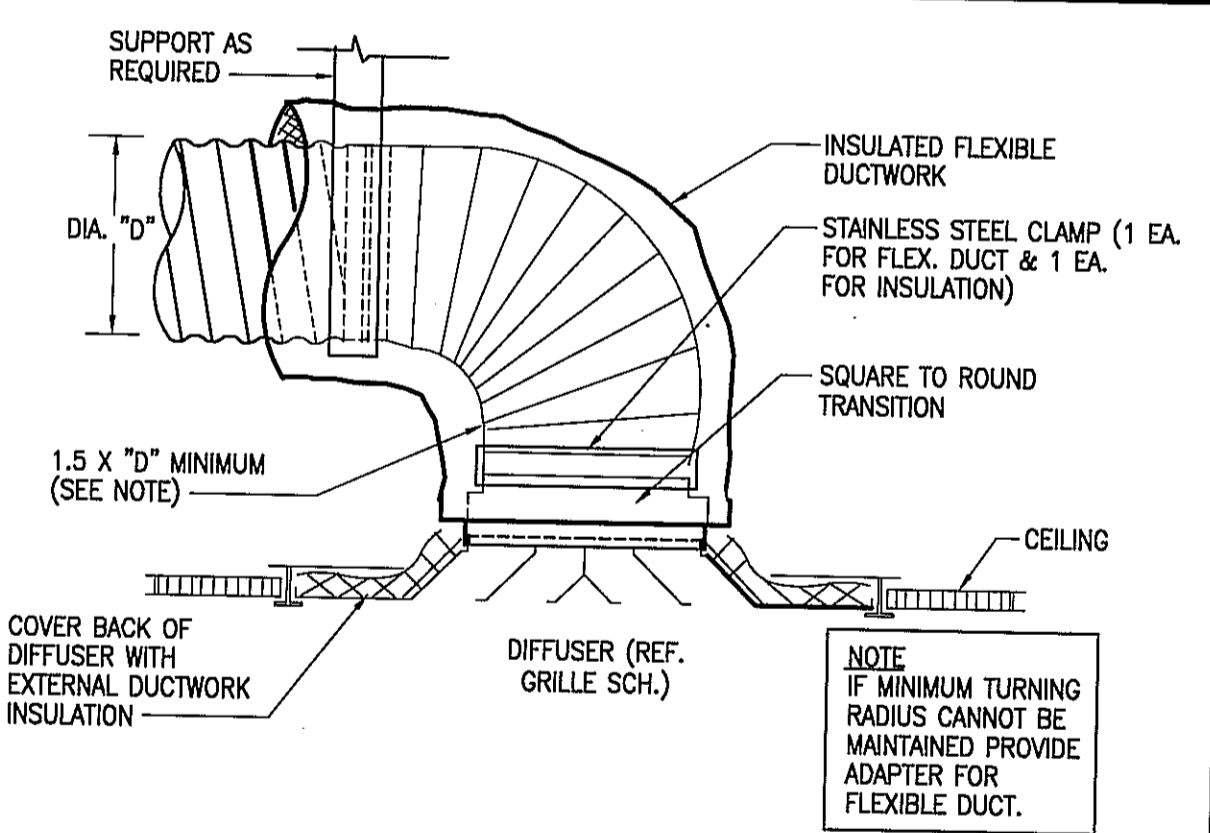


2 ROOF CURB
SCALE: NONE

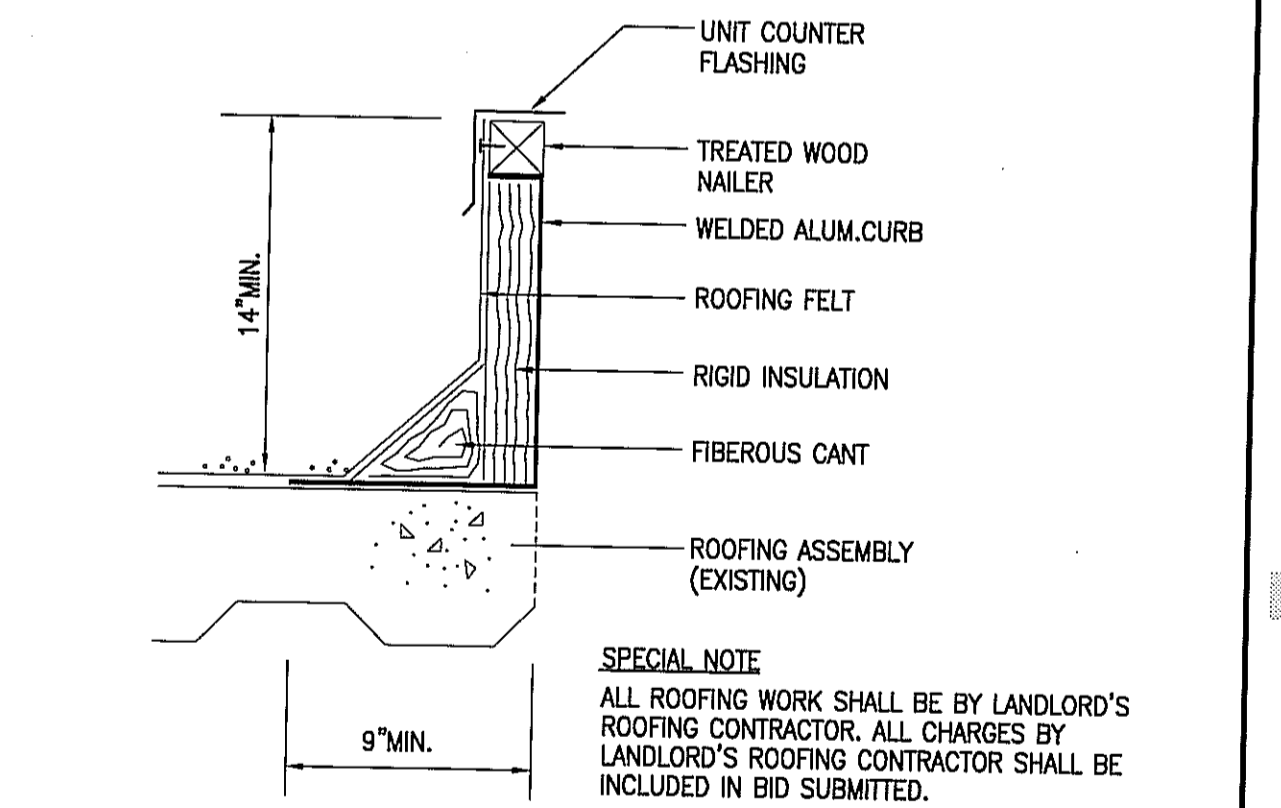


10 DUCT LINER & INSULATION DETAIL
SCALE: NO SCALE

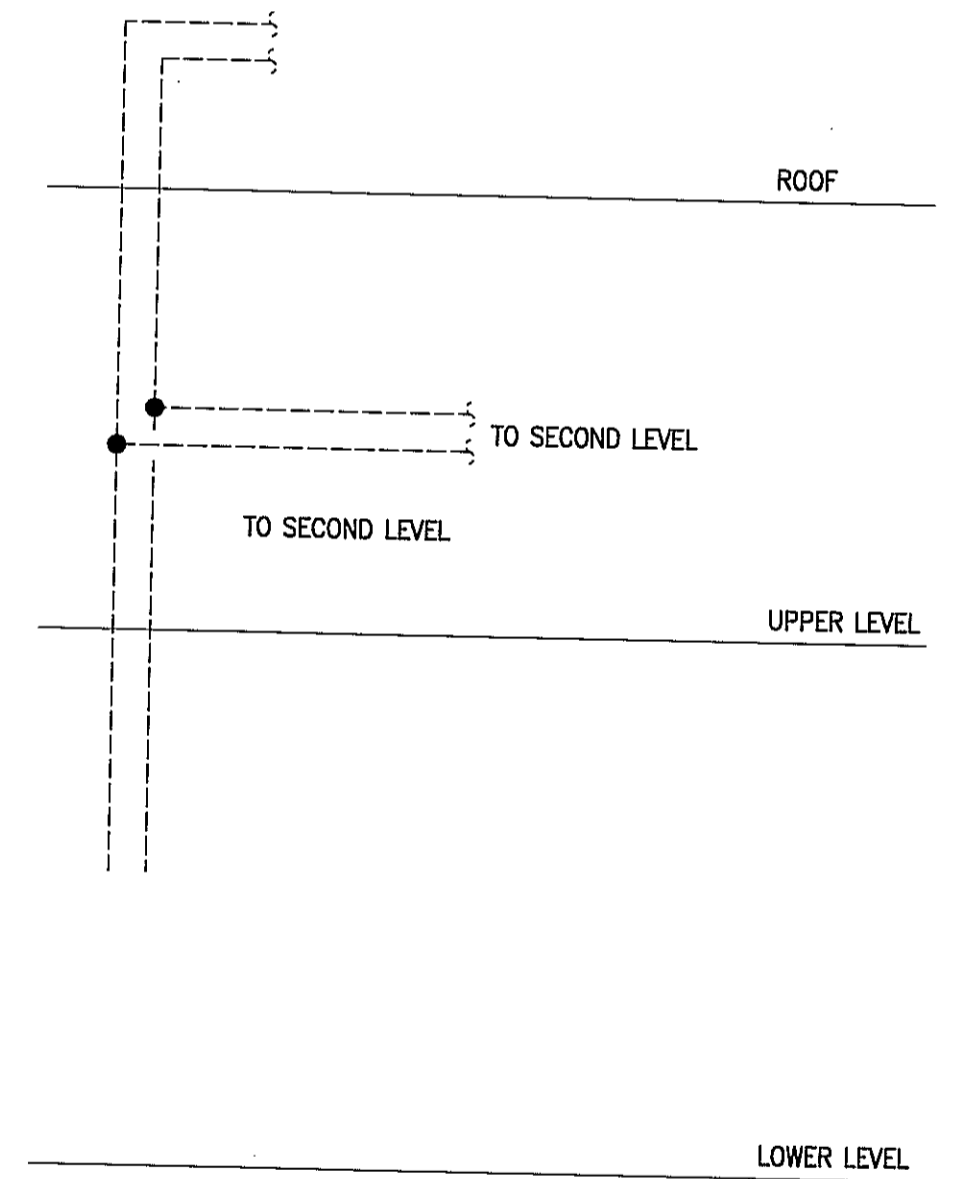
- NOTES
- SHEETMETAL DUCTWORK WITH EXTERNAL DUCTWORK INSULATION (MIN. R-6) AS SPECIFIED.
 - EXTERNAL INSULATION (MIN. R-6) ON BACK PAN OF AIR DEVICE.
 - PREINSULATED FLEXIBLE DUCTWORK WITH R-6 INSULATION AS SPECIFIED.
 - SHEETMETAL DUCTWORK WITH EXTERNAL DUCTWORK INSULATION (MIN. R-6) AS SPECIFIED AND 1" THICK 1-1/2 LB LINER FROM AIR HANDLING UNIT DISCHARGE TO 10'-0" DOWNSTREAM.
 - SHEETMETAL DUCTWORK WITH EXTERNAL DUCTWORK INSULATION (MIN. R-6) AS SPECIFIED AND 1" THICK 1-1/2 LB LINER 10'-0" UPSTREAM OF ROOF TOP UNIT TO RETURN AIR INLET.



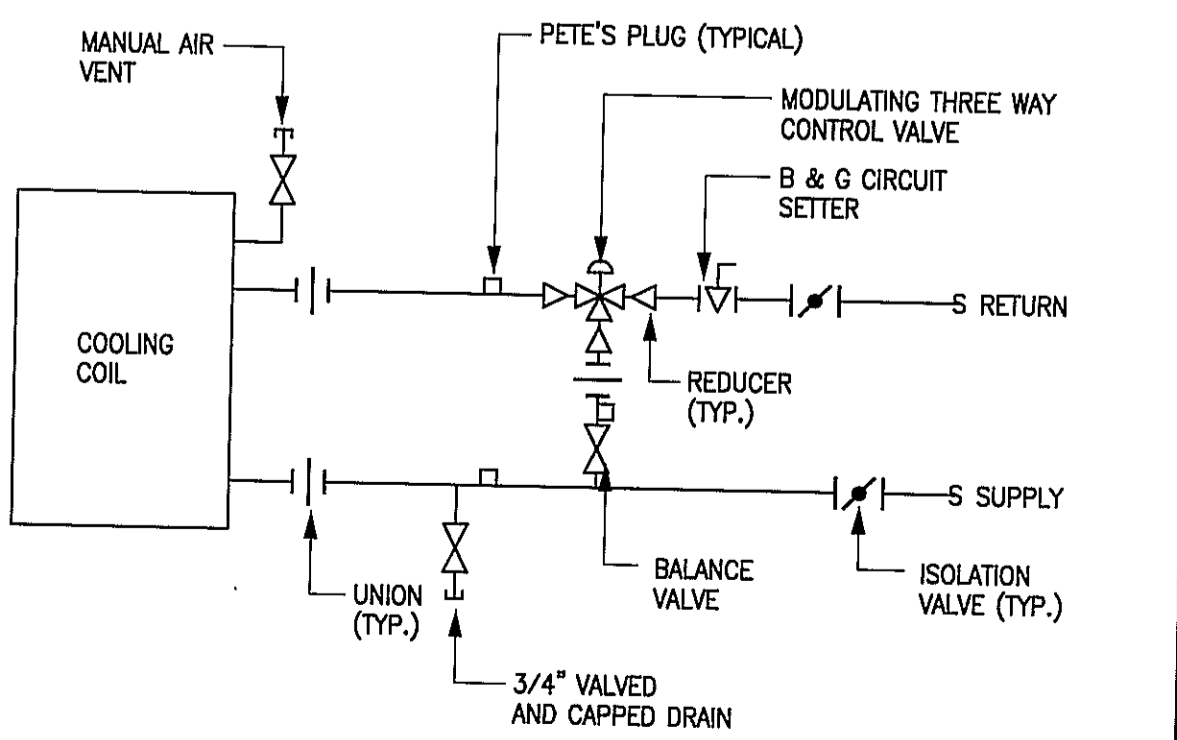
6 FLEX DUCT CONNECTION AT SUPPLY AIR DIFFUSER
SCALE: NONE



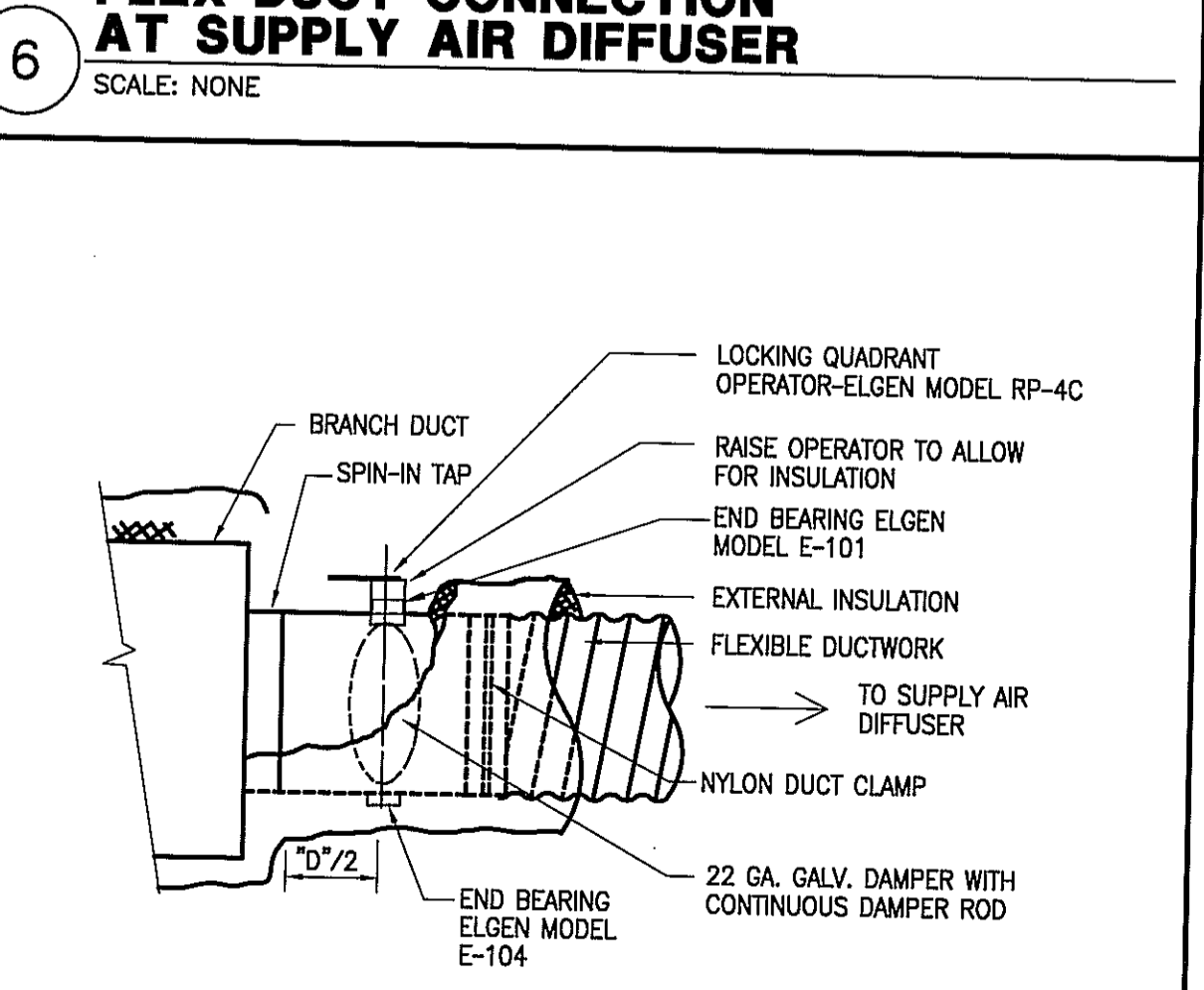
1 RIGID DUCT TAP TO SUPPLY AIR DIFFUSER
SCALE: NONE



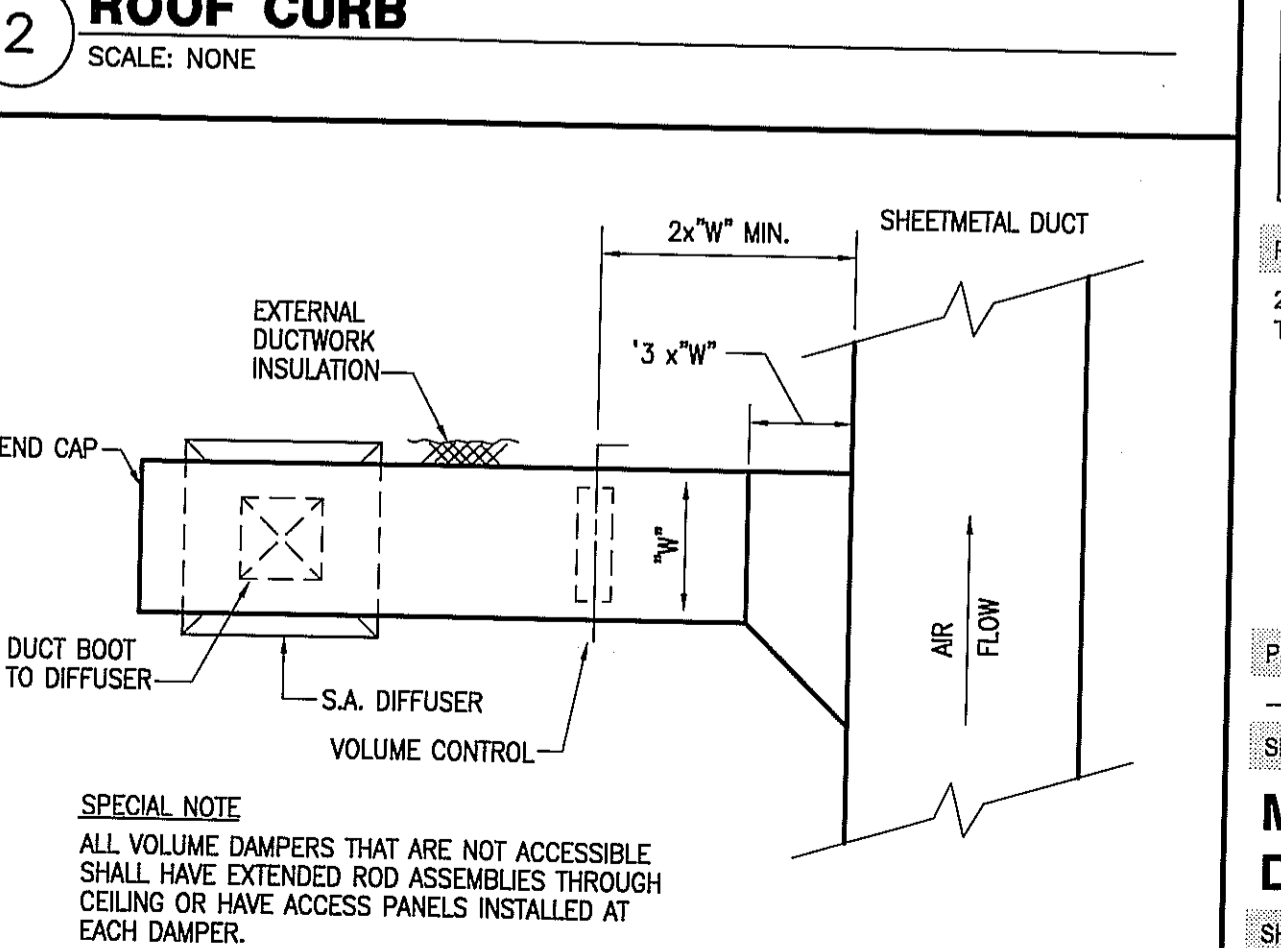
12 ROOFTOP KITCHEN HOOD SUPPLY FAN
SCALE: NONE



9 CHILLED WATER COOLING COIL DETAIL
SCALE: NONE



5 FLEXIBLE DUCT TAP
SCALE: NONE



1 RIGID DUCT TAP TO SUPPLY AIR DIFFUSER
SCALE: NONE



ISSUE
08-10-10 ISSUED FOR PERMIT

HARRELL
ARCHITECTS, LP

9575 Katy Frwy., #200
Houston, Texas 77024
tel: 713.722.7071
fax: 713.722.7072

CONSULTANTS
HOLSTE & ASSOCIATES
MEP Engineers

PROJECT NAME
GUADALUPANA RESTAURANT



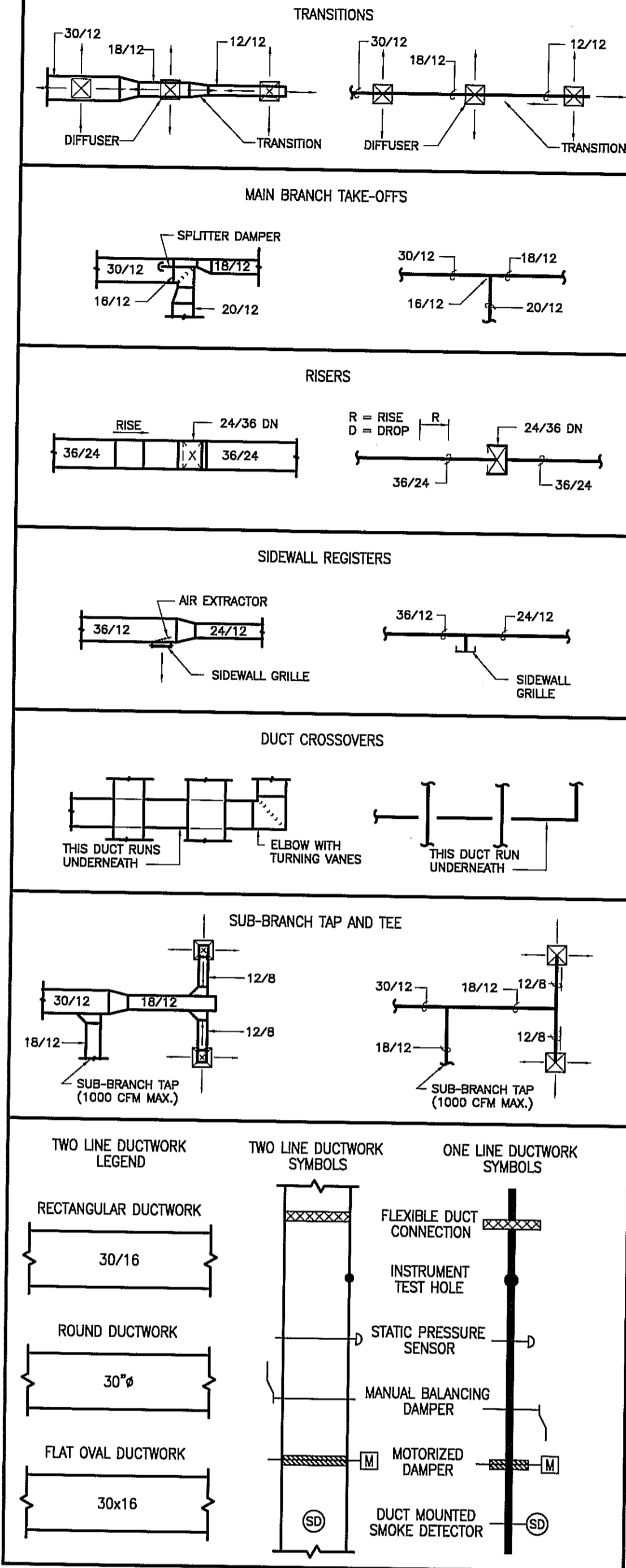
PROJECT ADDRESS
20 WATERWAY
THE WOODLANDS, TEXAS

PROJECT NUMBER
SHEET NAME
MECHANICAL DETAILS
SHEET NUMBER

M2.00

Holste & Associates, Inc.
Mechanical Engineers - Texas Reg. E-5443
6271 Southwest Freeway, Suite 850
Houston, Texas 77024 (713) 953-1331
www.holstemep.com

DUCTWORK SYMBOLS LEGEND



AIR HANDLING UNIT - CHILLED WATER COIL WITH ELECTRIC HEAT

MARK	INDOOR AIR FAN				COOLING								ELECTRIC HEATING				REMARKS			
	SUPPLY AIR CFM	OUTSIDE AIR CFM	EXT. STATIC PRESSURE (IN. W.C.)	HORSE POWER	CURRENT CHARAC.	AIR TEMP (°F) ENTERING DB/WB	LEAVING DB/WB	MIN. TOTAL CAPACITY (BTUH)	MIN. SENSIBLE CAPACITY (BTUH)	MIN. CHW COIL ROWS/FINS	ENT. CHW TEMP (°F)	CHW FLOW (GPM)	CHW DELTA TEMP (°F)	MINIMUM CAPACITY (KW)	NUMBER OF STAGES	CURRENT CHARAC.		LVG AIR °F		
AHU-1	3000	1750	1.0	2	460/3/60	80	67	55	54	166,500	98,200	6/8	42	27.8	12	30.0	NOTE #4	460/3/60	85	1,2,4,5
AHU-2	5000	2260	1.0	5	460/3/60	80	67	55	54	224,900	151,200	6/8	42	37.5	12	45.0	NOTE #4	460/3/60	85	1,3,4,5

GENERAL NOTES:

- EXTERNAL STATIC PRESSURE INCLUDES LOSSES DUE TO DUCTWORK, AIR DEVICES, DAMPERS, AND UNIT MOUNTED ELECTRIC HEATERS WHERE APPLICABLE. DIRTY FILTER AND UNIT CASING MUST BE ADDED TO EXTERNAL STATIC PRESSURE TO OBTAIN TOTAL PRESSURE LOSS. INCREASE HORSEPOWER AS REQUIRED TO MEET THE TOTAL PRESSURE LOSS. COORDINATE WITH ELECTRICAL CONTRACTOR.
- MAXIMUM FACE VELOCITY OF CHILLED WATER COIL SHALL BE 500 FPM.

REMARKS:

- PROVIDE WITH 7-DAY PROGRAMMABLE THERMOSTAT.
- UNIT SHALL BE CARRIER 40RMS010 OR APPROVED EQUAL.
- UNIT SHALL BE CARRIER 40RMS006 OR APPROVED EQUAL.
- UNITS SHALL BE SUSPENDED HORIZONTAL DRAW-THRU WITH FLAT FILTER SECTION, CHILLED WATER COIL, AND ELECTRICAL HEATING COIL IN THE REHEAT POSITION. ELECTRICAL HEATING COILS IN AHU-1 & 2 SHALL HAVE SCR CONTROL.
- APPROXIMATE UNIT WEIGHTS: AHU-1 = 1500lbs., AHU-2 = 200 lbs.

FAN AND OUTSIDE AIR INTAKE

MARK	LOCATION	CFM	MAXIMUM RPM	EXT. STATIC PRESSURE (IN. W.C.)	HORSE POWER	CURRENT CHARAC.	LOCALLY SWITCHED BY	INTERLOCKED WITH	FAN TYPE	MANUFACTURER	MODEL NUMBER	REMARKS
EF-1	EXHAUST HOODS#1 & #2	6725	952	2.25"	5	480/3/60	HOOD SWITCH	—	ROOF MOUNTED	CAPTEVAIRE	—	1,3,4
EF-2	EXHAUST HOOD#4	525	1169	.5"	1/3	120/1/60	HOOD SWITCH	—	ROOF MOUNTED	CAPTEVAIRE	—	1,2,4
EF-3	EXHAUST HOOD#3	1050	1341	1.0"	3/4	120/1/60	HOOD SWITCH	—	ROOF MOUNTED	CAPTEVAIRE	—	1,2,4
EF-4	TOILET EXHAUST	1100	1200	.5"	1/4	120/1/60	TIME CLOCK	—	ROOF MOUNTED	ACME	PV120E5	1,2,5
SF-1	MAKE-UP AIR HOODS#1	5380	876	1.25"	5	480/3/60	—	EF-1	ROOF MOUNTED	CAPTEVAIRE	—	1,2,4

GENERAL NOTES:

- EXTERNAL STATIC PRESSURE INCLUDES LOSSES DUE TO DUCTWORK, AIR DEVICES, AND DAMPERS WHERE APPLICABLE.
- FAN SHALL BE CENTRIFUGAL WITH PREFABRICATED ROOF CURB.
- EF-1,2,3, AND SF-1 SHALL BE FURNISHED BY FOOD SERVICE CONTRACTOR AND INSTALLED BY MECHANICAL CONTRACTOR. EF-4 SHALL BE FURNISHED BY THE MECHANICAL CONTRACTOR.

REMARKS:

- ROOF MOUNTED CENTRIFUGAL FAN.
- PROVIDE WITH MOTORIZED DAMPER.
- FAN SHALL BE RATED FOR HIGH TEMPERATURE KITCHEN HOOD EXHAUST.
- FAN AND CURB PROVIDED BY KITCHEN HOOD SUPPLIER.
- FAN AND CURB INSTALLED BY MECHANICAL CONTRACTOR.

AIR DEVICE SCHEDULE

MARK	SERVICE	TYPE	DAMPER	CONSTRUCTION MATERIAL	FINISH COLOR	NECK SIZE	FACE SIZE	MANUFACTURER	MODEL NUMBER	AIR PATTERN	MOUNTING	REMARKS
A	SUPPLY AIR	DIFFUSER	OBD	STEEL	OFF-WHITE	6"x6"	24"x24"	METALAIRE	SERIES 5000	SEE PLAN	LAY-IN	LOUVER FACE DIFFUSER
B	SUPPLY AIR	DIFFUSER	OBD	STEEL	OFF-WHITE	8"x8"	24"x24"	METALAIRE	SERIES 5000	SEE PLAN	LAY-IN	LOUVER FACE DIFFUSER
C	SUPPLY AIR	DIFFUSER	OBD	STEEL	OFF-WHITE	10"x10"	24"x24"	METALAIRE	SERIES 5000	SEE PLAN	LAY-IN	LOUVER FACE DIFFUSER
D	SUPPLY AIR	DIFFUSER	OBD	STEEL	OFF-WHITE	12"x12"	24"x24"	METALAIRE	SERIES 5000	SEE PLAN	LAY-IN	LOUVER FACE DIFFUSER
E	SUPPLY AIR	DIFFUSER	OBD	STEEL	OFF-WHITE	8"x8"	18"x18"	METALAIRE	SERIES 5000	SEE PLAN	SURFACE	LOUVERED FACE DIFFUSER
F	SUPPLY AIR	DIFFUSER	OBD	STEEL	OFF-WHITE	10"x10"	18"x18"	METALAIRE	SERIES 5000	SEE PLAN	SURFACE	LOUVERED FACE DIFFUSER
G	SUPPLY AIR	DIFFUSER	OBD	STEEL	OFF-WHITE	12"x12"	18"x18"	METALAIRE	SERIES 5000	SEE PLAN	SURFACE	LOUVERED FACE DIFFUSER
H	RETURN OR EXHAUST AIR	GRILLE	OBD	STEEL	OFF-WHITE	12"x12"	N/A	METALAIRE	RH	SEE PLAN	SURFACE	45° DEFLECTION PARALLEL BLADE
J	RETURN AIR	GRILLE	N/A	STEEL	OFF-WHITE	20"x20"	N/A	METALAIRE	RH	SEE PLAN	LAY-IN	45° DEFLECTION PARALLEL BLADE
K	RETURN AIR	GRILLE	N/A	STEEL	OFF-WHITE	SEE PLAN	N/A	METALAIRE	RH	SEE PLAN	SURFACE	45° DEFLECTION PARALLEL BLADE
L	SUPPLY AIR	REGISTER	OBD	STEEL	STANDARD	SEE PLAN	N/A	METALAIRE	VHD	SEE PLAN	SURFACE	DOUBLE DEFLECTION
M	SUPPLY AIR	SLOT	OBD	ALUMINUM	STANDARD	48"x2 1/2"	8"	METALAIRE	6650 (1/2) SLOS	N/A	SURFACE	ADJUST FOR HORIZONTAL AIR FLOW

GENERAL NOTES:

- DAMPERS NOTED AS U.L. SHALL BE A "U.L." CLASSIFIED CEILING RADIATION DAMPER WITH THERMAL BLANKET.

DAMPER

MARK	ACTUATOR	DUTY	BLADE ACTION	MANUFACTURER	MODEL NUMBER	REMARKS
D-1	MANUAL BALANCING	UNDER 9" WIDE	N/A	N/A	N/A	SEE SMACNA CONSTRUCTION DETAILS REFERENCED "TYPICAL CONSTRUCTION DETAILS FOR LOW VELOCITY DUCTS."
D-2	MANUAL BALANCING	OVER 9" WIDE	OPPOSED	RUSKIN	MD-35	MANUAL DAMPER WITH STANDARD CONSTRUCTION FEATURES AND VENTLOCK #637 LOCKING REGULATOR.
D-3	MOTORIZED	OVER 9" WIDE	OPPOSED	RUSKIN	CD-60	LOW LEAKAGE DAMPER WITH BLADE SEALS

NOTES:

N/A - NOT APPLICABLE

SYMBOL LEGEND

SYMBOL	DESCRIPTION (DISREGARD ITEMS NOT SHOWN ON PLANS)		
GENERAL			
Ⓝ	KEY NOTE TAG		
Ⓢ	NOTE SPECIFIC TO DETAIL TAG		
Ⓡ	REVISION TAG		
Ⓜ	NEW EQUIPMENT		
DUCTWORK			
—	SUPPLY AIR DUCTWORK		
—	RETURN AIR AND OUTSIDE AIR DUCTWORK		
—	EXHAUST AIR DUCTWORK		
—	FLEXIBLE DUCTWORK		
—	SUPPLY AIR DUCTWORK THROUGH HORIZONTAL PARTITION		
—	RETURN AIR AND OUTSIDE AIR DUCTWORK THROUGH HORIZONTAL PARTITION		
—	EXHAUST AIR DUCTWORK THROUGH HORIZONTAL PARTITION		
FD	FIRE DAMPER		
—	MANUAL BALANCING DAMPER (SEE DAMPER SCHEDULE)		
—	MOTORIZED DAMPER (SEE DAMPER SCHEDULE)		
SENSORS AND DAMPERS			
Ⓢ	THERMOSTAT AND TEMPERATURE SENSOR	VD	MANUAL VOLUME DAMPER
Ⓢ	HUMIDISTAT	MD	MOTORIZED DAMPER
Ⓢ	SMOKE DETECTOR	CO2	CARBON DIOXIDE DETECTOR
AIR DEVICES			
Ⓢ	AIR DEVICE TAG (REFER TO AIR DEVICE SCHEDULE)		
Ⓢ	SUPPLY AIR GRILLE WITH FOUR-WAY THROW		
Ⓢ	RETURN AIR GRILLE WITH SOUND BOOT		
Ⓢ	EXHAUST AIR GRILLE		
PIPING			
—	CONDENSATE DRAIN LINE		

AIR BALANCE ANALYSIS

DINING			
UNIT NO.	SUPPLY CFM	O.A.	EXHAUST
AHU-2	5000	2260	-
EF-4	-	-	1100
EF-3	-	-	1050
SUB-TOTAL	5000	2260	2150
KITCHEN			
UNIT NO.	SUPPLY CFM	O.A.	EXHAUST
AHU-1	3000	1750	-
EF-1	-	-	6725
SF-1	-	5380	-
EF-2	-	-	525
SUB-TOTAL	3000	7130	7250

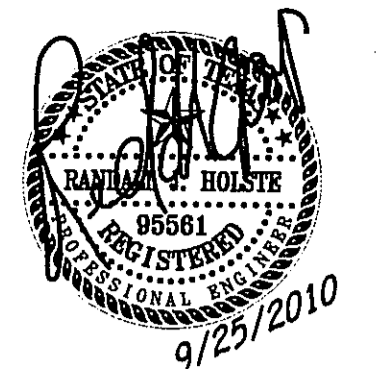
BALANCE OF MAKEUP AIR WILL BE PROVIDED FROM OUTSIDE AIR THRU AHU-2 SERVING THE DINING ROOM AREAS.

AIR BALANCE SUMMARY - BUILDING			
AREA	SUPPLY	O.A.	EXHAUST
DINING	5000	2260	2150
KITCHEN	3000	7140	7250
TOTAL	8000	9400	9400 (-0-)

HOOD ANALYSIS

KITCHEN HOOD NO.1			
UNIT NO.	MAKEUP	% MAKEUP	EXHAUST
EF-1	-	-	3600
SF-1	2880	-	-
TOTAL	2880	80%	3600
KITCHEN HOOD NO.2			
UNIT NO.	MAKEUP	% MAKEUP	EXHAUST
EF-2	-	-	3125
SF-2	2500	-	-
TOTAL	2500	80%	3125
DISHWASHER CONDENSATE HOOD #4 (CFM)			
UNIT NO.	MAKEUP	% MAKEUP	EXHAUST
EF-2	-	-	525
TOTAL	-	0%	525
TORTILLA HOOD #3 (CFM)			
UNIT NO.	MAKEUP	% MAKEUP	EXHAUST
EF-3	-	-	1050
TOTAL	-	0%	1050

BALANCE OF MAKEUP AIR WILL BE SUPPLIED THRU AIR HANDLING UNITS



ISSUE
09-10-10 ISSUED FOR PERMIT

HARRELL
ARCHITECTS, LP
9575 Katy Frwy., #200
Houston, Texas 77024
tel: 713.722.7071
fax: 713.722.7072

CONSULTANTS
HOLSTE & ASSOCIATES
MEP Engineers

PROJECT NAME
GUADALUPANA RESTAURANT

PROJECT ADDRESS
20 WATERWAY THE WOODLANDS, TEXAS

PROJECT NUMBER
—
SHEET NAME
MECHANICAL SCHEDULES
SHEET NUMBER
—

Holste & Associates, Inc.
Consulting Engineers - Texas Reg. F-5415
6671 Southwest Frwy., Suite 850
Houston, Texas 77074 (713) 995-1351
www.holstemep.com

M3.00