

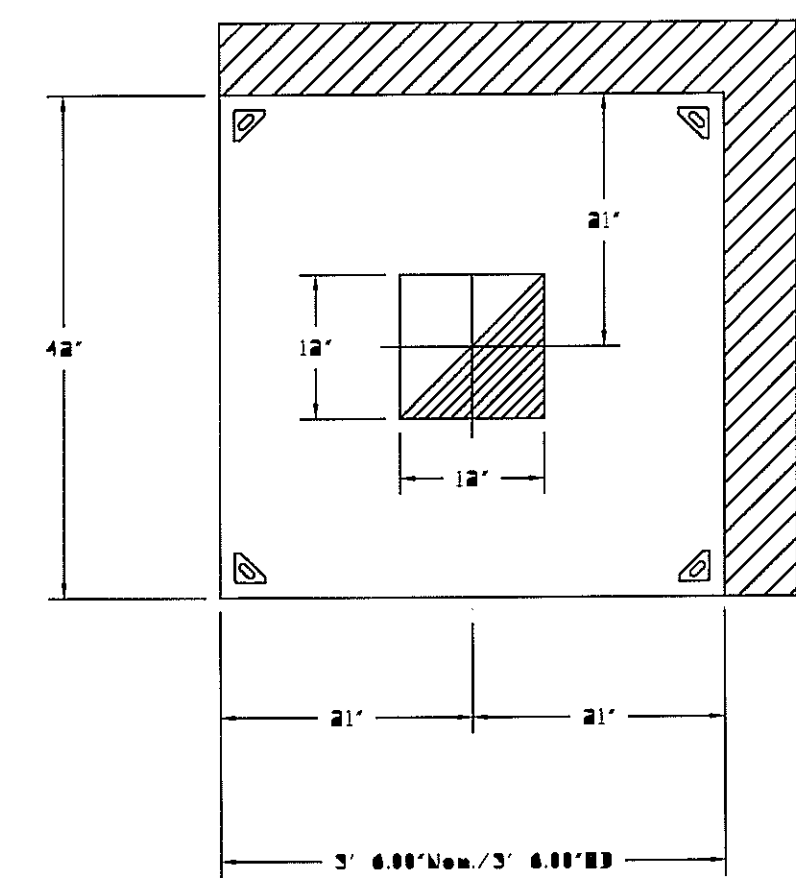
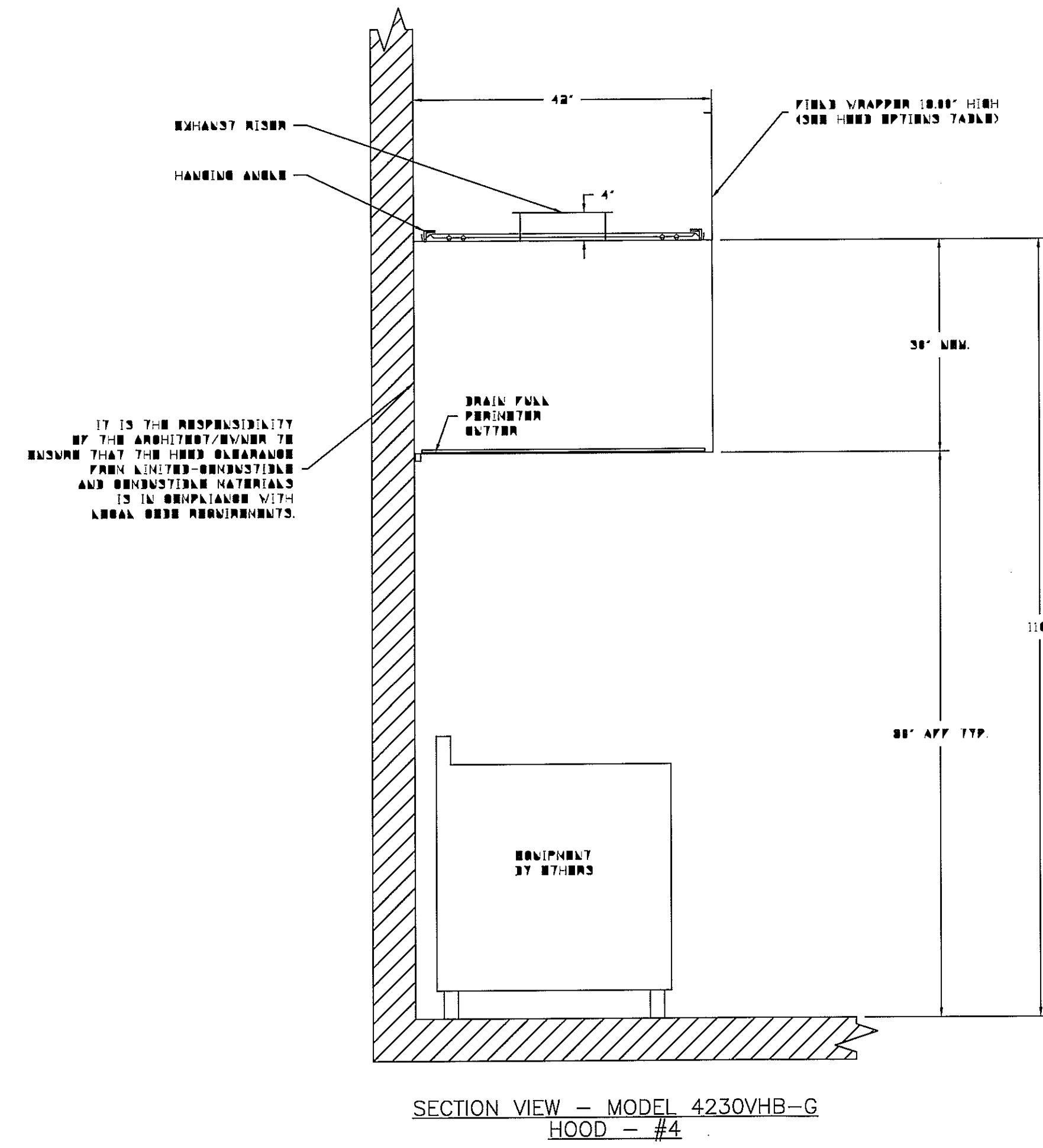
| HOOD INFORMATION | | | | | | | | | | | | | | | | |
|------------------|--------------------|-----------|--------------------|-------------------------|-------|--------|------|---------|------------------------|----------------|-------|--------|------|-------------------------|-------------|------------------|
| HOOD NO. | MODEL | LENGTH | MAX. EXHAUST TEMP. | EXHAUST PLENUM RISER(S) | | | | | SUPPLY PLENUM RISER(S) | | | | | HOOD CONSTRUCTION | HOOD FINISH | SWITCHES |
| | | | | TOTAL EXH. CFM | WIDTH | LENGTH | DIA. | CFM | S.P. | TOTAL SUP. CFM | WIDTH | LENGTH | DIA. | | | |
| 1 | 5424 NB-2-PSP-F | 12' 0.00' | 600 Deg | 3600 | 10" | 34" | 3600 | -0.709" | 2000 | | | | | 430 SS Where Exposed | ALUMN | |
| 2 | 5424 NB-2-PSP-F | 12' 0.00' | 600 Deg | 3125 | 10" | 30" | 3125 | -0.979" | 2500 | | | | | 430 SS Where Exposed | ALUMN | |
| 3 | 3630 VNB-B-NB | 7' 0.00' | 700 Deg | 1050 | 10" | 17" | 1050 | -0.004" | 0 | | | | | 304 SS 100% | ALUMN | 1 FAN 1 LIGHT |
| 4 | 4230 VNB-B | 3' 0.00' | 700 Deg | 525 | 12" | 12" | 525 | -0.040" | 0 | | | | | 304 SS 100% | ALUMN | |

| HOOD INFORMATION | | | | | | | | | | | | | | | |
|------------------|------------------------|------|--------|--------|----------|-------------------------|------------|----------|--------------------|-------------|----------|------------------|-------------|-------------|----------|
| HOOD NO. | FILTER(S) | | | | LIGHT(S) | | | | UTILITY CABINET(S) | | | | FIRE SYSTEM | HOOD FINISH | |
| | TYPE | QTY. | WEIGHT | LENGTH | QTY. | TYPE | WIRE GUARD | LOCATION | TYPE | SIZE | MODEL # | QUANTITY | | | LOCATION |
| 1 | SS Baffle with Handles | 4 | 16" | 16" | 4 | Incandescent Light Fixt | NI | Left | Ansul R102 | 3.0/3.0/3.0 | 31111002 | 1 Light 1 Fan | Outside | YES | 430 SS |
| 2 | SS Baffle with Handles | 3 | 16" | 16" | 4 | Incandescent Light Fixt | NI | | | | | | | YES | 430 SS |
| 3 | | | | | 2 | Incandescent Light Fixt | NI | | | | | | | NI | 430 SS |
| 4 | | | | | 0 | | | | | | | | | NI | 430 SS |

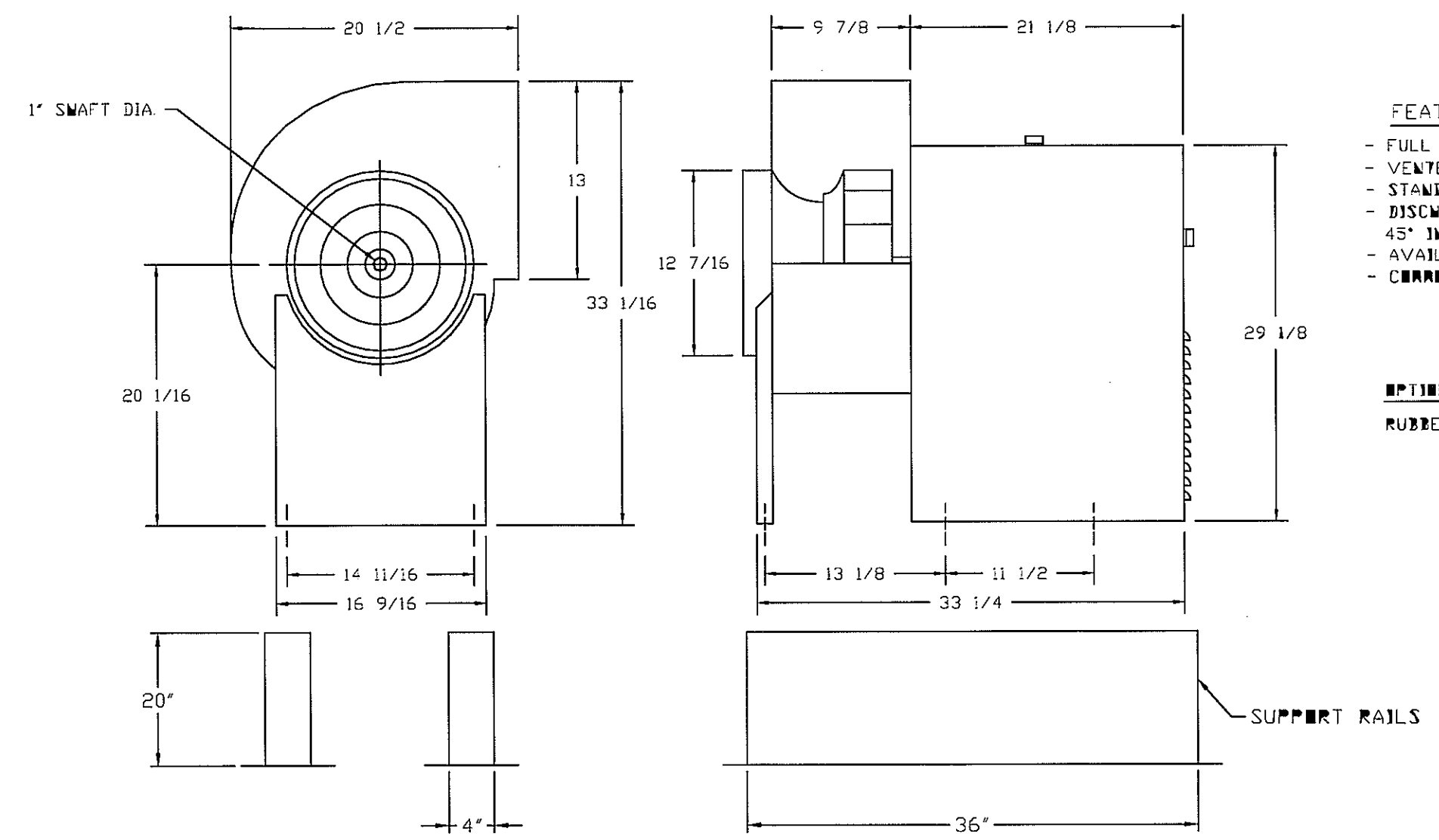
| HOOD OPTIONS | | | | | | | | | | |
|--------------|-----------------|--------|--------|--------------------|------|-------|------------|--------|--------|--------------|
| HOOD NO. | OPTION | LENGTH | HEIGHT | FRONT | LEFT | RIGHT | BACKSPLASH | LENGTH | HEIGHT | BACKSPLASH |
| 1 | FIELD WRAPPER | 6.00' | High | Front, Left | | | BACKSPLASH | 80.00' | High X | 156.00' Long |
| | BALANCE DAMPERS | | | | | | | | | 430 SS |
| 2 | FIELD WRAPPER | 6.00' | High | Front, Right | | | BACKSPLASH | 80.00' | High X | 150.00' Long |
| | BALANCE DAMPERS | | | | | | | | | 430 SS |
| 3 | FIELD WRAPPER | 18.00' | High | Front, Left, Right | | | | | | |
| 4 | FIELD WRAPPER | 18.00' | High | Front, Left | | | | | | |

| PERFORATED SUPPLY PLENUM(S) | | | | | | | | | |
|-----------------------------|-------|--------|-------|--------|----------|--------|------|--------|------|
| HOOD NO. | POS. | LENGTH | WIDTH | WEIGHT | RISER(S) | | | | |
| | | | | | WIDTH | LENGTH | DIA. | CFM | S.P. |
| 1 | Front | 156" | 12" | 6" | 10" | 24" | 960 | 0.164" | |
| | | | | | 10" | 24" | 960 | 0.164" | |
| | | | | | 10" | 24" | 960 | 0.164" | |
| 2 | Front | 150" | 12" | 6" | 10" | 20" | 833 | 0.151" | |
| | | | | | 10" | 20" | 833 | 0.151" | |
| | | | | | 10" | 20" | 833 | 0.151" | |

ETL LISTING DESCRIPTION BLOCK
 THE CAPTIVE AIRE MODEL VH HAS BEEN E.T.L. TESTED, LISTED, AND APPROVED TO EXHAUST A MINIMUM OF 100 CFM PER LINEAR FOOT OVER 700 DEGREE EQUIPMENT



FAN #4 3112CA - EXHAUST FAN



- FEATURES:**
- FULL ANCA CLASS 3 OPERATION
 - VENTED WATER COVER FOR WEATHER PROTECTION
 - STANDARD TOP HORIZONTAL DISCHARGE
 - DISCHARGE POSITION CAN BE EASILY ROTATED IN 45° INCREMENTS IN THE FIELD
 - AVAILABLE IN COV OR BY ROTATION
 - CORROSION RESISTANT FINISH
- OPTIONS:**
- RUBBER VIBRATION ISOLATORS FOR 31121177 SRTS (SRT BY 6)

| REVISIONS | |
|-------------|------|
| DESCRIPTION | DATE |
| | |
| | |
| | |

CAPTIVE
 A Qualapone #1203032
 The Woodlands, TX
 2020 South Loop West, Suite 600, Houston, TX, 77064 PHONE: (713) 800-0044 FAX: (713) 800-0044 EMAIL: info@captivaire.com www.captivaire.com
 HOODS OFFICE

DATE: 9/24/2010
 DWG.#: 1203032
 DRAWN BY: EAF
 SCALE: 1/16
 MASTER DRAWING
 SHEET NO. 1

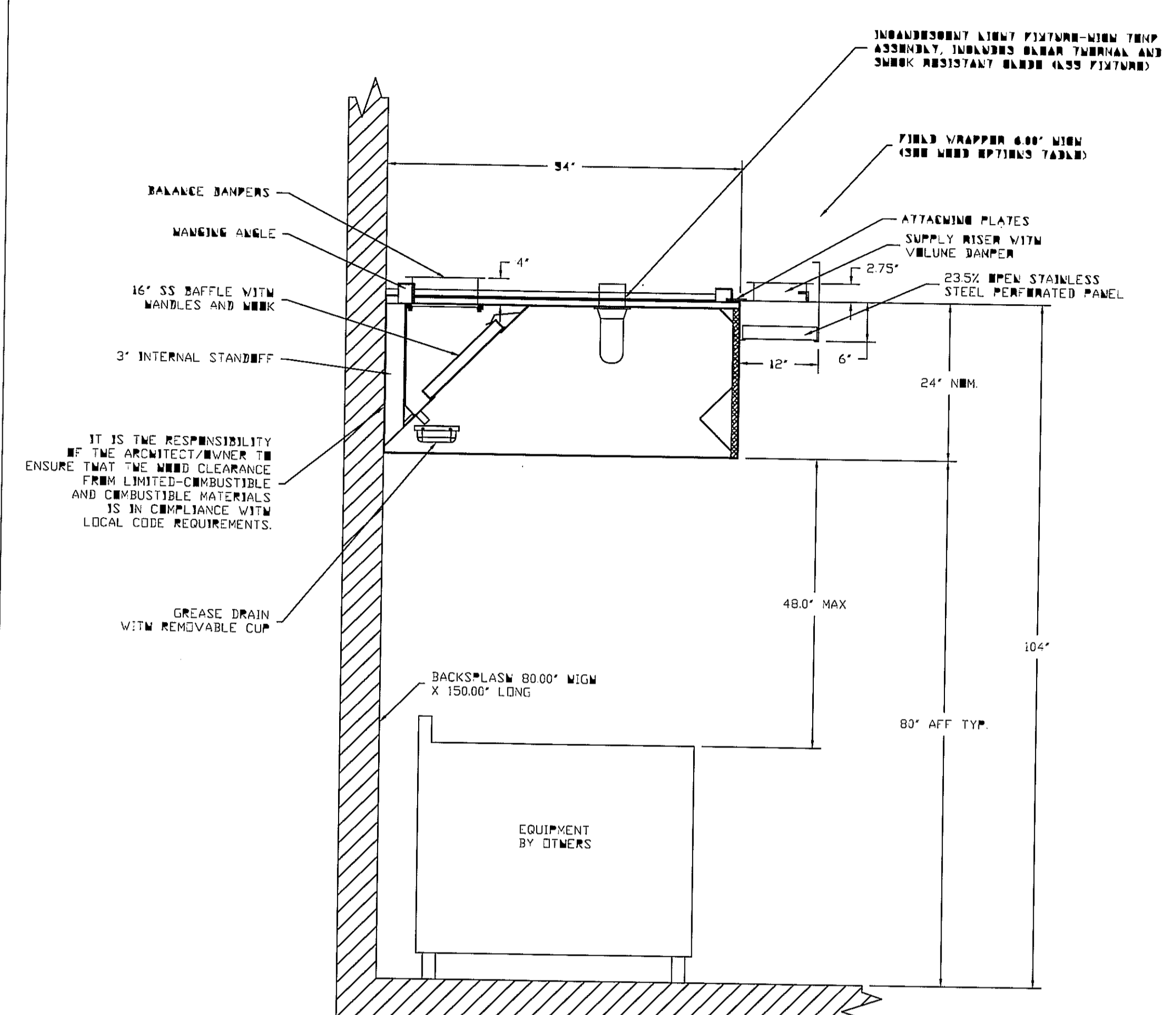
| REVISIONS | |
|-------------|------|
| DESCRIPTION | DATE |
| | |
| | |
| | |
| | |

CAPTIVE
 ROOSTER OFFICE
 3636 South Loop West, Suite 820, Houston, TX, 77064 PHONE: (713) 886-8844 FAX: (713) 886-8846 EMAIL: roo@captivaire.com
 www.captivaire.com

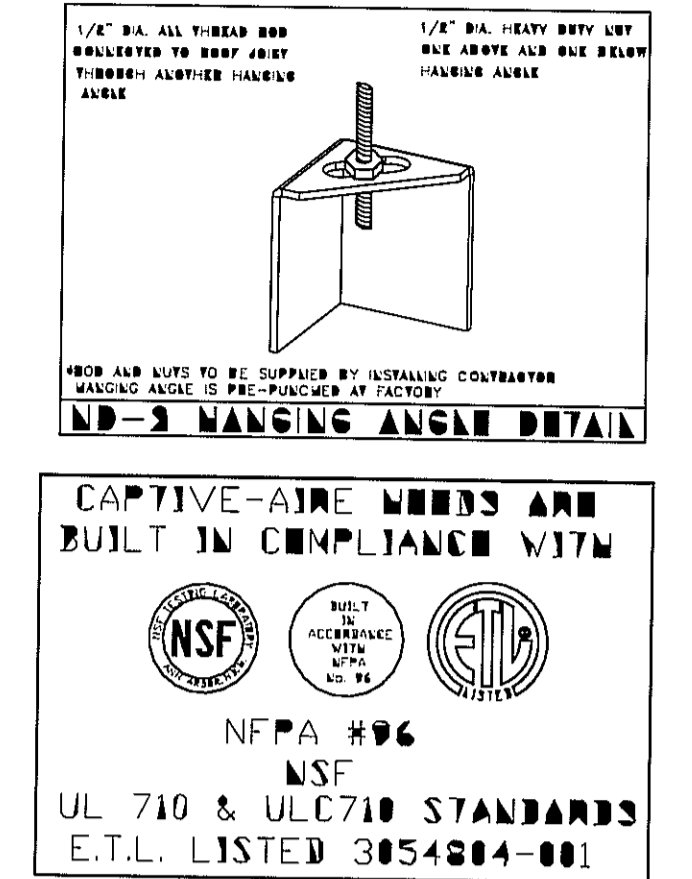
A BudaLapans #120332
 The Woodlands, TX

DATE: 9/24/2010
 DWG.#: 120332
 DRAWN BY: EAF
 SCALE: 1/16
 MASTER DRAWING

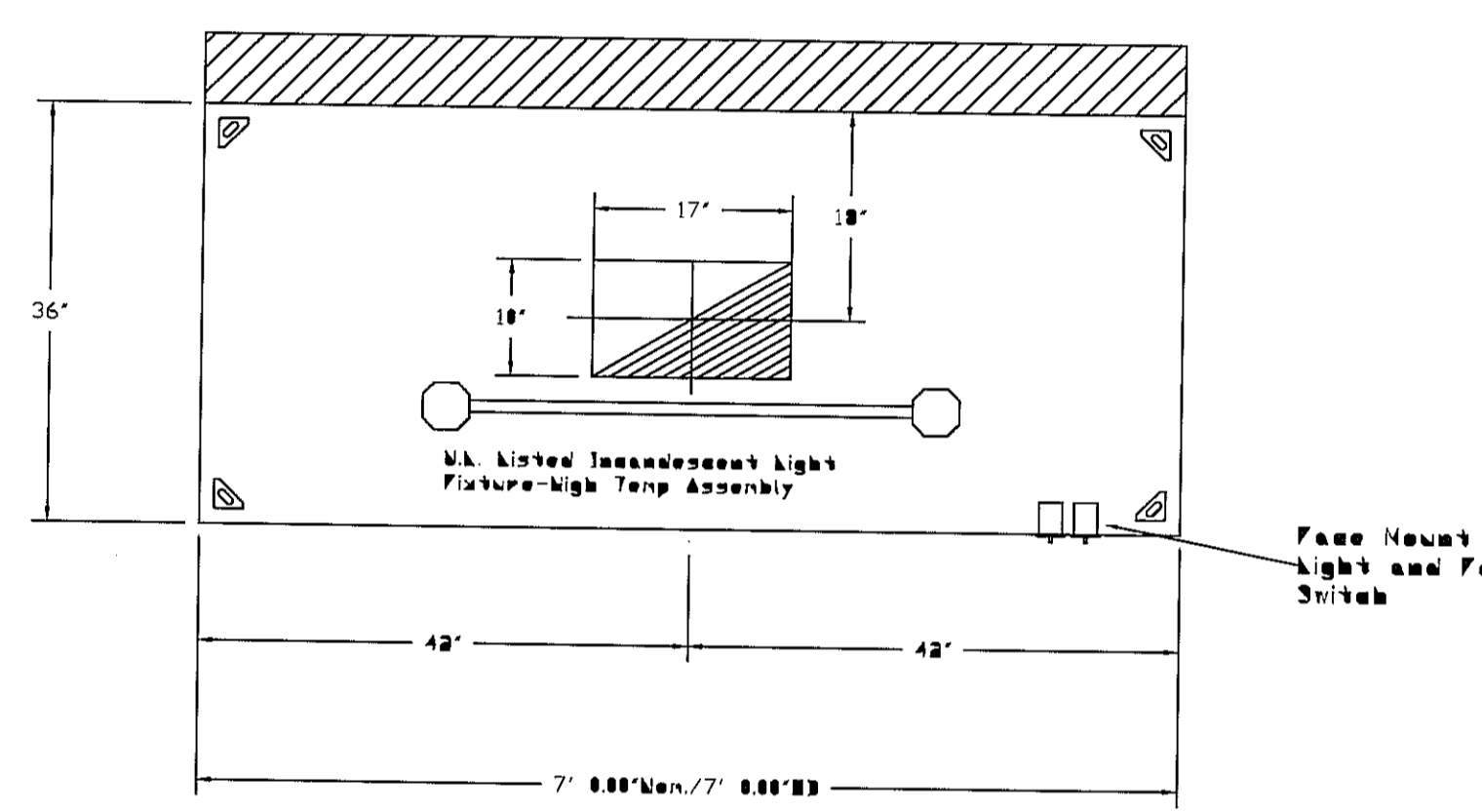
SHEET NO.
 2



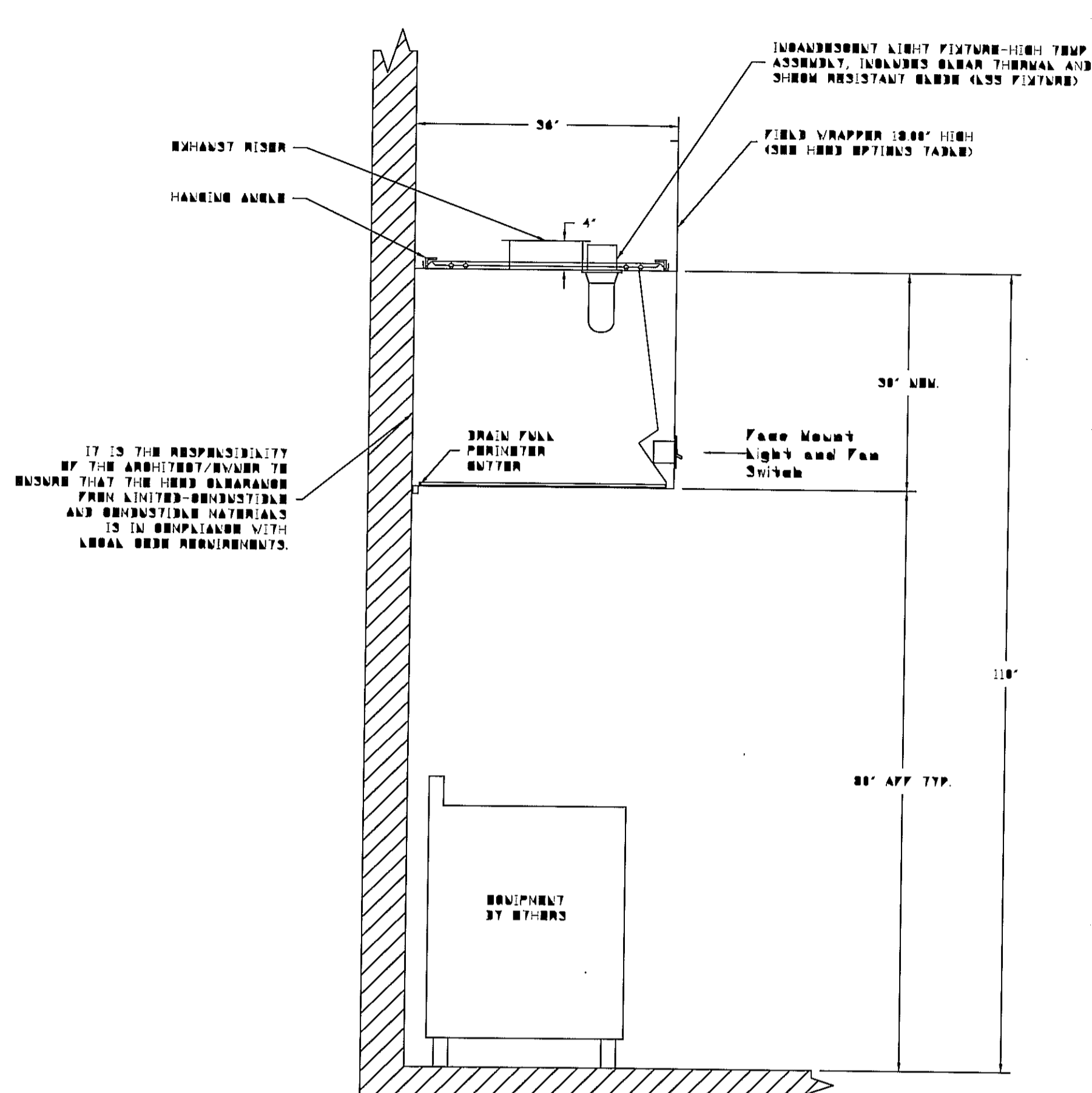
SECTION VIEW - MODEL 5424ND-2-PSP-F
HOOD - #2



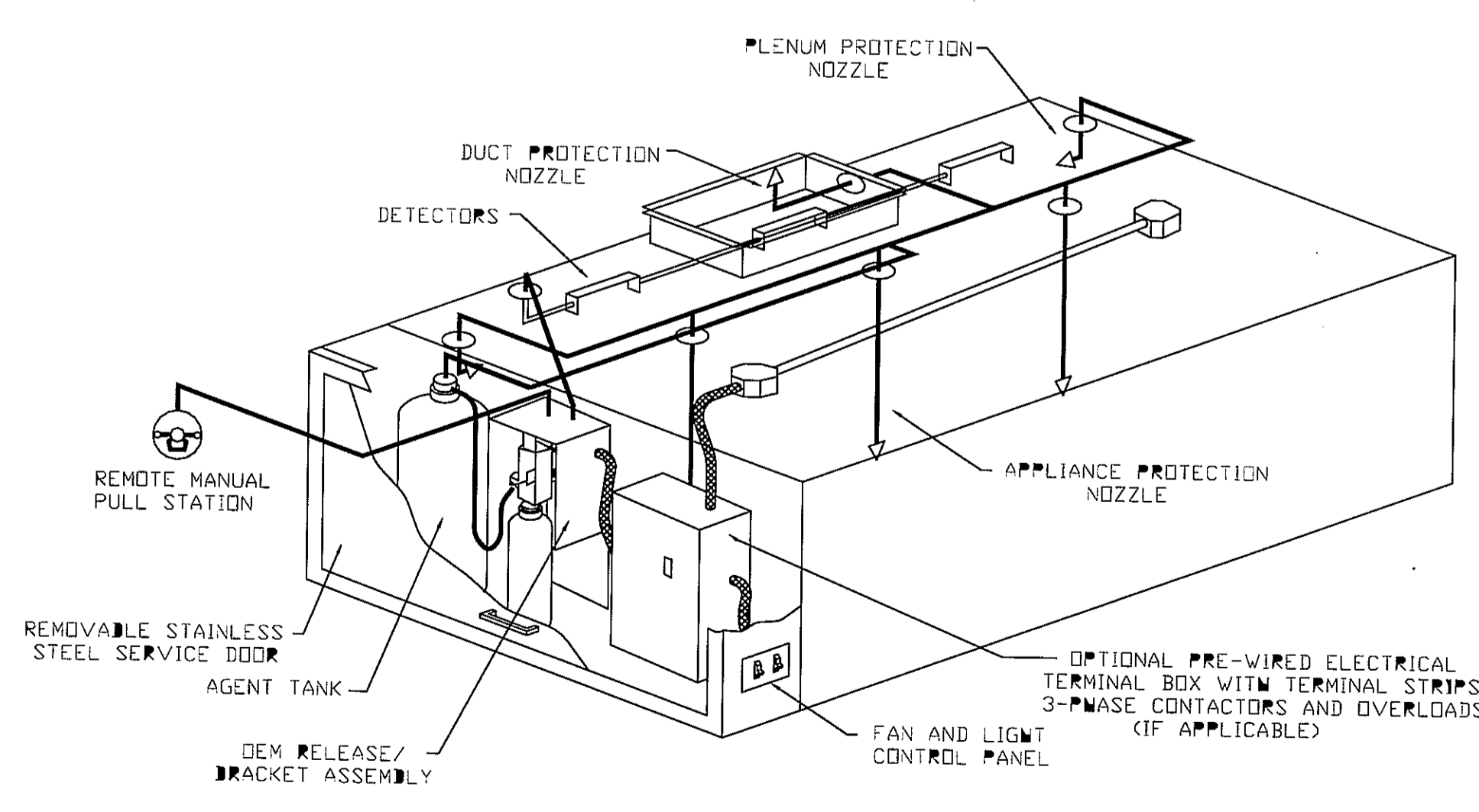
ETL LISTING DESCRIPTION BLOCK
 THE CAPTIVE AIRE MODEL
 ND HAS BEEN E.T.L.
 TESTED, LISTED, AND
 APPROVED TO EXHAUST
 A MINIMUM OF 150/200/250 CFM
 PER LINEAR FOOT OVER
 450/600/700 DEGREE COOKING
 EQUIPMENT, RESPECTIVELY.



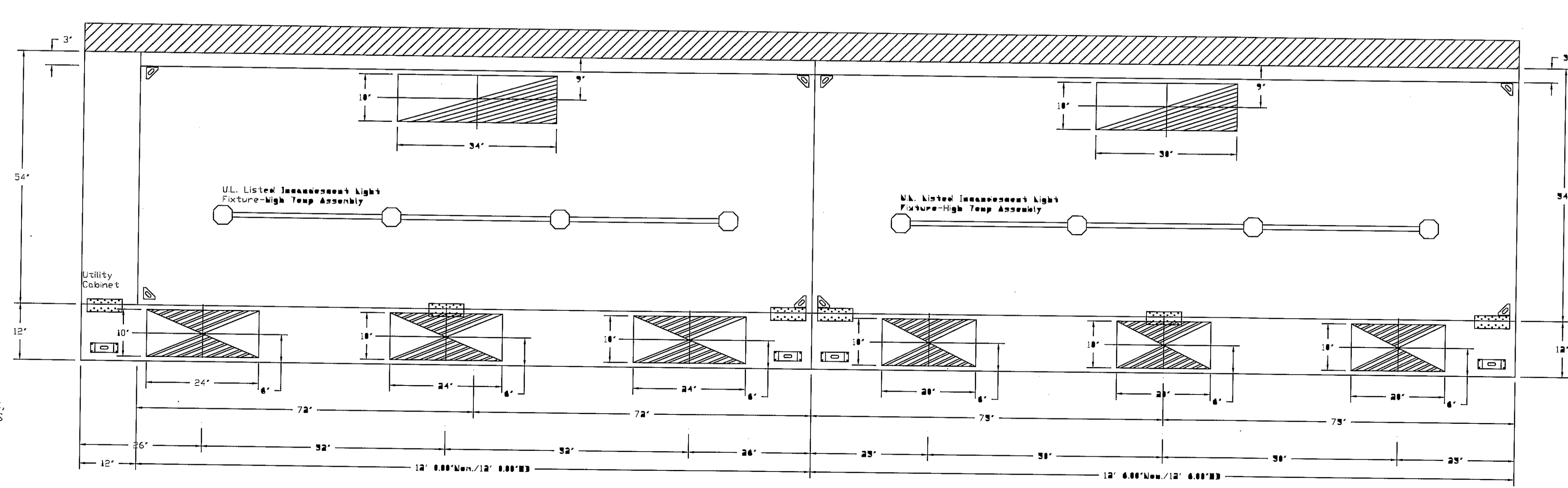
PLAN VIEW - Hood #3
7' 0.00\"/>



SECTION VIEW - MODEL 3630VHB-G-ND
HOOD - #3



TYPICAL ANSUL R-102 SYSTEM LAYOUT



PLAN VIEW - Hood #1
12' 0.00\"/>

PLAN VIEW - Hood #2
12' 6.00\"/>

NOTE: Additional hanging angles provided for hoods longer than 12 ft.

EXHAUST FAN INFORMATION

| FAN UNIT NO. | FAN UNIT MODEL # | MODEL | TAG | CFM | S.P. | RPM | M.P. | Ø | VOLT | FLA | DISCHARGE VELOCITY | WEIGHT (LBS.) |
|--------------|------------------|-------------|-----|------|-------|------|-------|---|------|------|--------------------|---------------|
| 1 | RNS-V22700A | RNS-V22700A | | 4725 | 2.250 | 952 | 5.000 | 3 | 480 | 6.4 | 1582 FPM | 584.00 |
| 3 | US1137 | US1137 | | 1050 | 1.000 | 1341 | 0.750 | 1 | 115 | 11.0 | 984 FPM | 195.00 |
| 4 | B1120A | B1120A | | 525 | 0.750 | 1169 | 0.555 | 1 | 115 | 7.0 | 589 FPM | 186.00 |

HEATER/MUA FAN INFORMATION

| FAN UNIT NO. | FAN UNIT MODEL # | BLOWER | HOUSING | TAG | CFM | S.P. | RPM | M.P. | Ø | VOLT | FLA | WEIGHT (LBS.) |
|--------------|------------------|--------|---------|-----|------|-------|-----|-------|---|------|-----|---------------|
| 2 | NSAU2-G15 | G15 | NSAU2M1 | | 5380 | 1.250 | 876 | 5.000 | 3 | 480 | 6.4 | 373.67 |

FAN OPTIONS

| FAN UNIT NO. | OPTION (Qty. - Descr.) |
|--------------|---|
| 1 | 1 - Exhaust Fan Grease Cup (Utility Set) |
| 1 | 1 - Rubber Vibration Isolators for BI Utility Sets (set of 6) |
| 3 | 1 - Backdraft Damper - US1137 - Don't use with UL762. |
| 1 | 1 - Rubber Vibration Isolators for BI Utility Sets (set of 6) |
| 4 | 1 - Rubber Vibration Isolators for BI Utility Sets (set of 6) |
| 1 | 1 - BD-DR - B112 Damper - Don't use w/ UL762 |

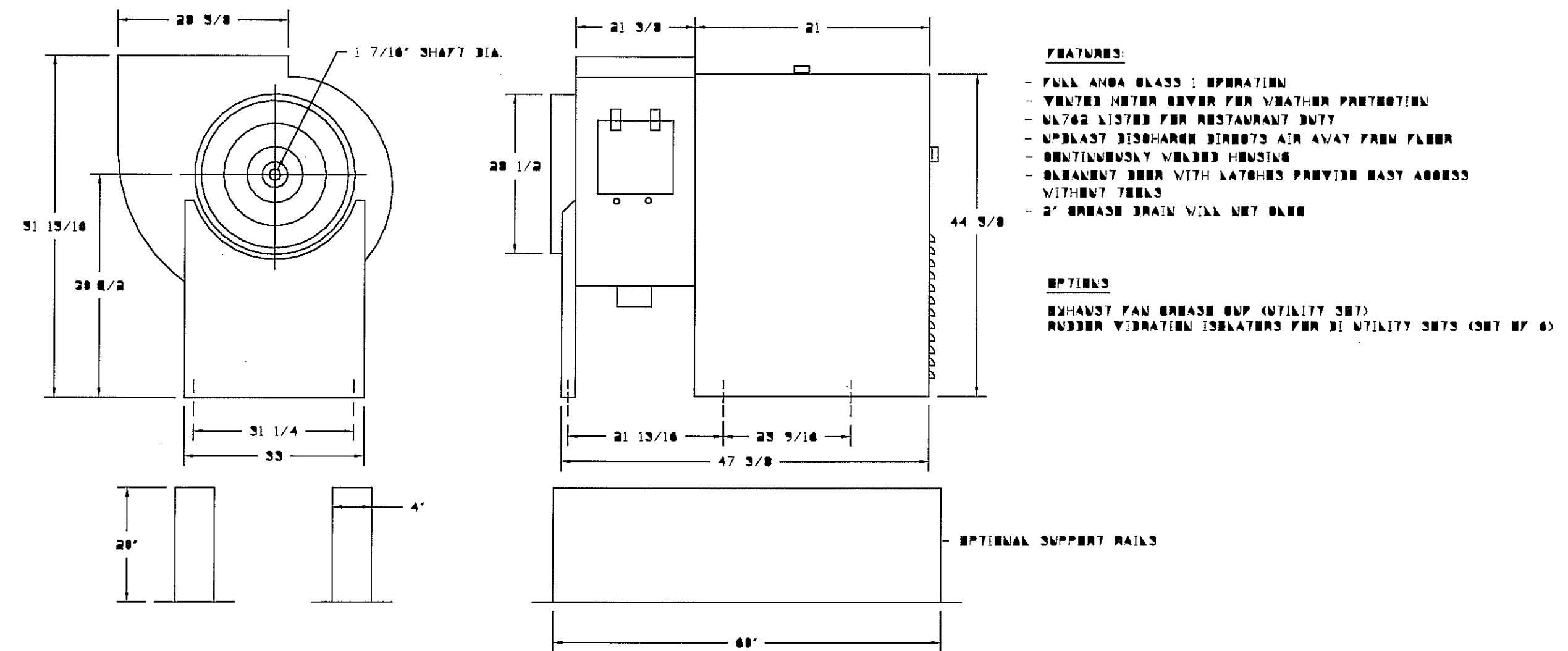
FAN ACCESSORIES

| FAN UNIT NO. | FAN UNIT TAG | EXHAUST | | | | SUPPLY | | |
|--------------|--------------|------------|----------------|------------|----------------|----------------|------------------|------------|
| | | GREASE CUP | GRAVITY DAMPER | WALL MOUNT | SIDE DISCHARGE | GRAVITY DAMPER | MOTORIZED DAMPER | WALL MOUNT |
| 2 | | | | | YES | | | |

CURB ASSEMBLIES

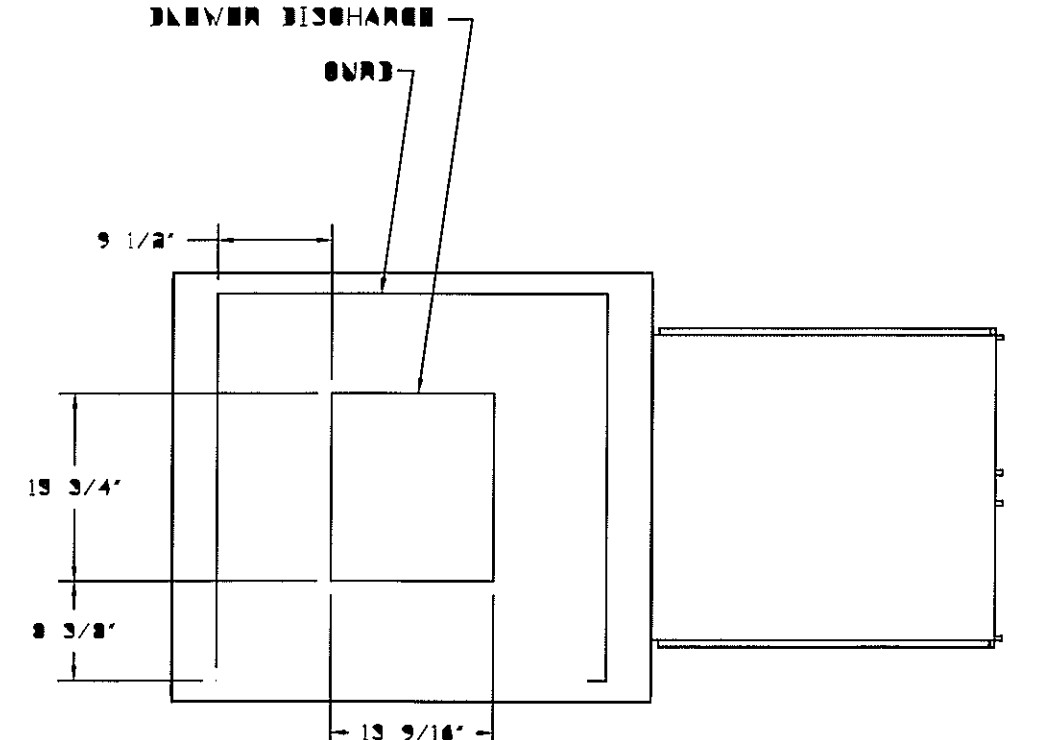
| NO. | ON FAN | ITEM | SIZE |
|-----|--------|------|--------------------------------|
| 1 | # 1 | Curb | 4.000"W x 60.000"L x 20.000"W |
| 2 | # 2 | Curb | 32.500"W x 32.500"L x 14.000"W |
| 3 | # 3 | Curb | 4.000"W x 36.000"L x 20.000"W |
| 4 | # 4 | Curb | 4.000"W x 36.000"L x 20.000"W |

FAN #1 RNS-V22700A - EXHAUST FAN

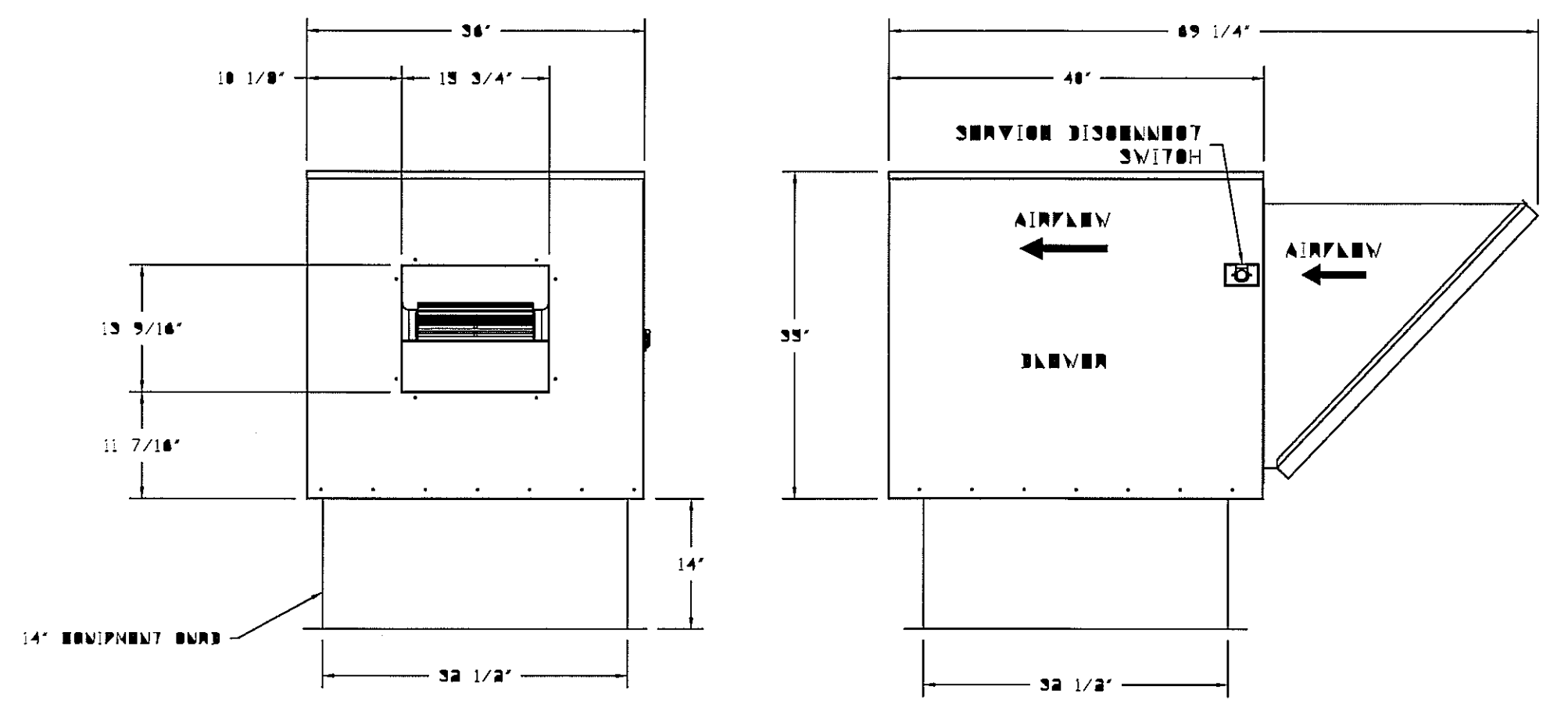
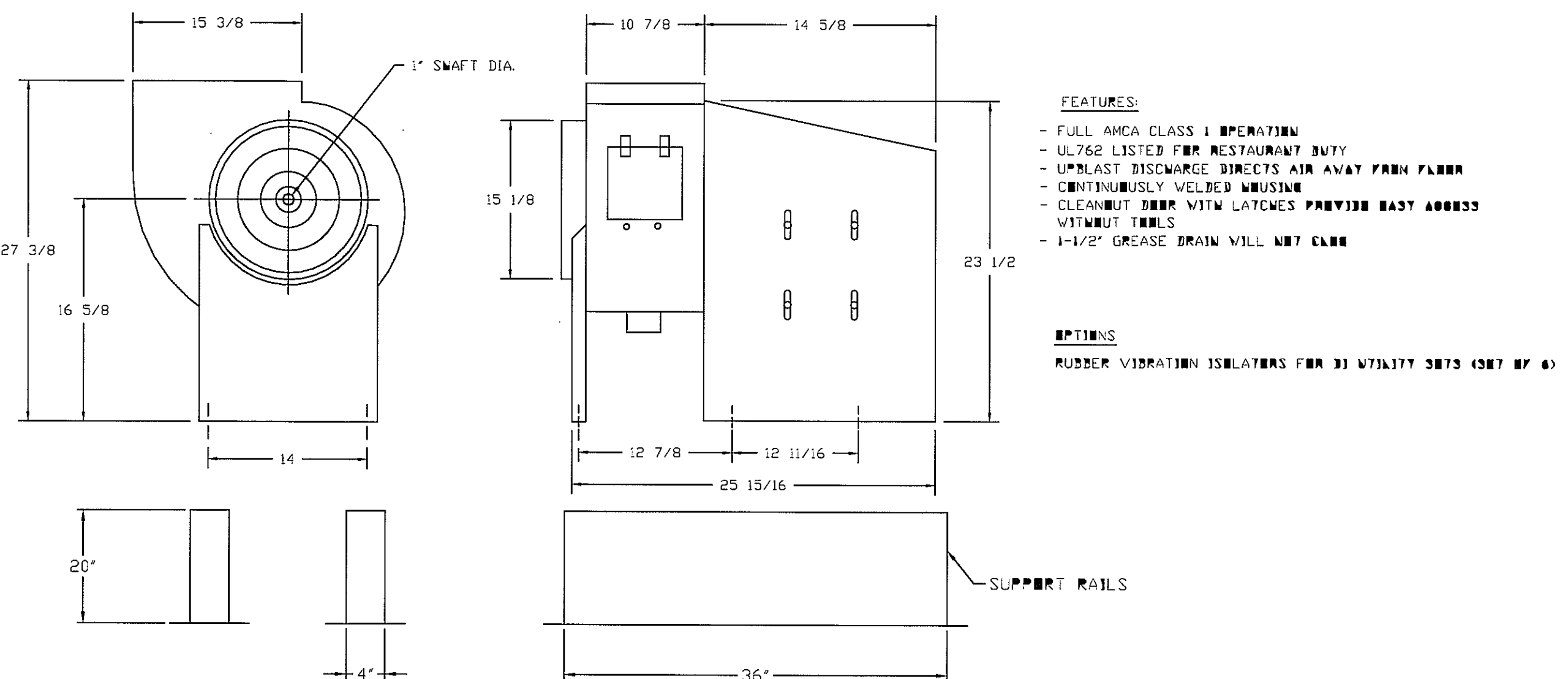


FAN #2 NSAU2-G15 - SUPPLY FAN

- SUPPLY UNIT WITH 15" BLOWER IN SIDE FR HOUSING
- INTAKE HOOD WITH BZ FILTERS
- SIDE DISCHARGE - AIR FLOW RIGHT -> LEFT



FAN #3 US1137 - EXHAUST FAN



| REVISIONS | DESCRIPTION | DATE |
|-----------|-------------|------|
| | | |
| | | |
| | | |

CAPTIVE

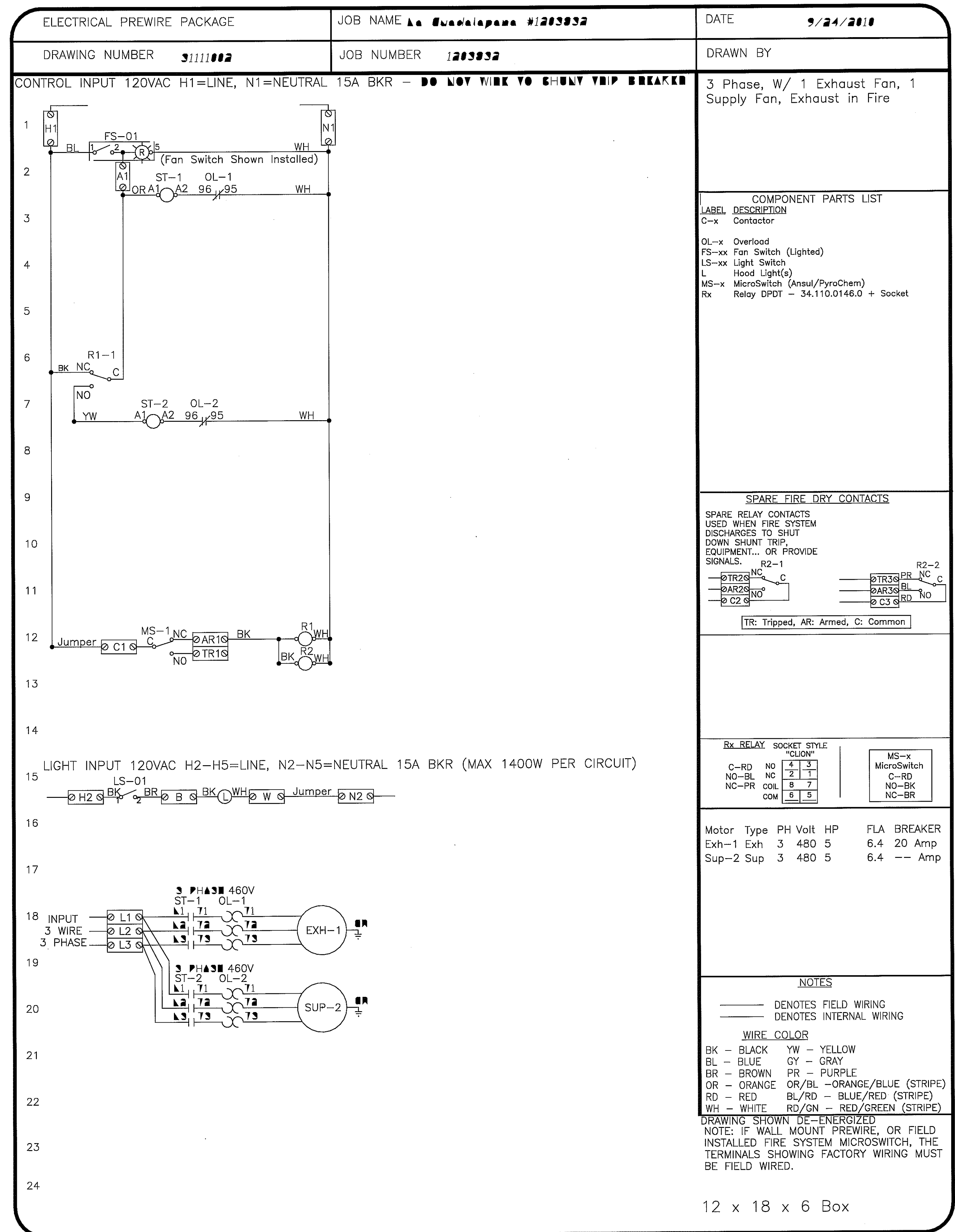
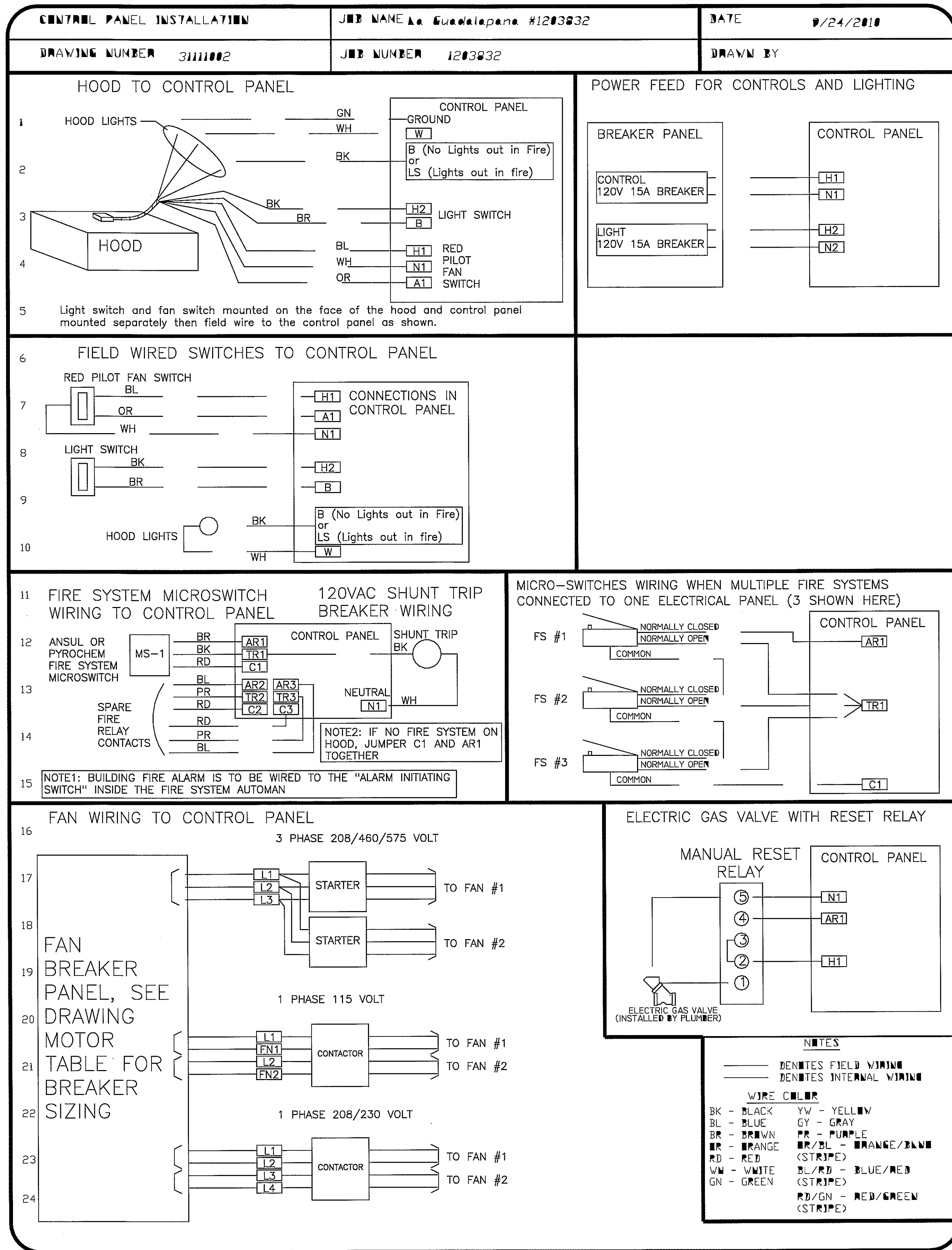
2858 South Loop West, Suite 630, Houston, TX, 77064. PHONE: (713) 866-8844 FAX: (713) 866-8844 EMAIL: rsg40@captive.com
HOUSTON OFFICE www.captive.com

1203832
The Woodlands, TX

DATE: 9/24/2010
DWG.#: 1203832
DRAWN BY: CAJ
SCALE: 1/16
MASTER DRAWING

SHEET NO. 3

| ELECTRICAL PACKAGES | | | | | | | | | | |
|---------------------|-----|-----------|----------------------|----------------------|------------------|------------------|---|-------|-------|-----|
| NO. | TAG | PACKAGE # | LOCATION | SPECIFICATIONS | | FANS SUBTOTALLED | | | | |
| | | | | DESCRIPTION | QUANTITY | TYPE | # | HP | VOLTS | FLA |
| 1 | | 3111002 | Utility Cabinet Left | Utility Cabinet Left | 1 Light 1 Fan | Exhaust | 3 | 5.000 | 480 | 6.4 |
| | | | | Motor # 1 | 1 Fan | Supply | 3 | 5.000 | 480 | 6.4 |



| REVISIONS | |
|-------------|------|
| DESCRIPTION | DATE |
| | |
| | |
| | |

CAPTIVE
HOUSTON OFFICE
2010 South Loop West, Suite 830, Houston, TX, 77058 PHONE: (713) 980-9044 FAX: (713) 980-9046 EMAIL: rged@captivewire.com www.captivewire.com

La Guadalupe #1203932
The Woodlands, TX

DATE: 9/24/2010
DWG.#: 1203932
DRAWN BY: EAF
SCALE: 1/16
MASTER DRAWING

SHEET NO. 4