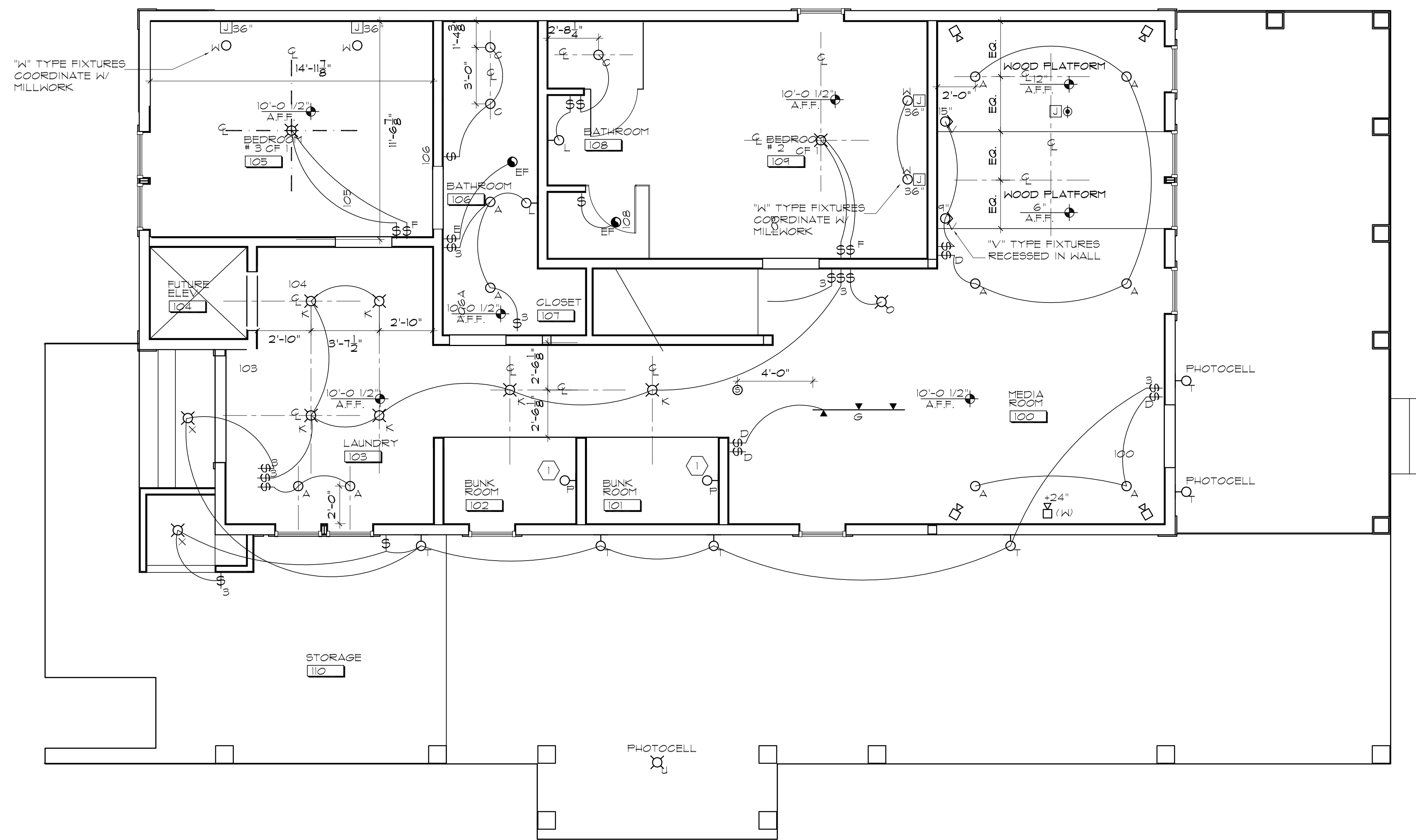


# LIGHTING FIXTURE SCHEDULE (OF/CI)



## CEILING PLAN NOTES

ALL HVAC AND ELECTRICAL LIGHTING DESIGN SHALL BE DESIGN / BUILD. THIS PLAN IS FOR GENERAL LOCATION ONLY, AND IS INTENDED ONLY FOR DESIGN INTENT.

REFER TO MECHANICAL DOCUMENTS FOR HVAC SPECIFICATIONS. COORDINATE WITH ARCHITECT FOR EXACT LOCATIONS. ALL EXPOSED GRILLS SHALL BE FINISH: MATCH CEILING OR WALL COLOR.

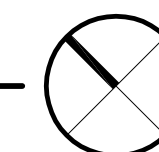
(1) (2) FIXTURES MOUNTED ONE @ 5'-0" A.F.F. AND ONE @ 9'-0" A.F.F.

## CEILING LEGEND

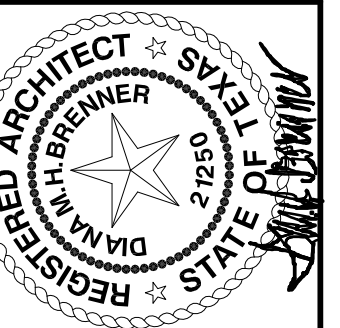
- ROOM NAME
- ROOM NAME & NUMBER
- CEILING PLAN NOTE
- DETAIL TAG & ENLARGED PLAN, INDICATES DETAIL #1 ON SHEET A3.1
- INDICATES CEILING HEIGHT
- RECESSED CEILING FIXTURE
- RECESSED CEILING FIXTURE / SPEAKER
- CEILING FAN
- CEILING MOUNTED LIGHT FIXTURE. VERIFY W/ ARCHITECT EXACT LOCATION & HEIGHT, BEFORE ROUGH-IN INSTALLATION.
- SUSPENDED LIGHT FIXTURE. VERIFY W/ ARCHITECT EXACT LOCATION & HEIGHT, BEFORE ROUGH-IN INSTALLATION.
- RECESSED ADJUSTABLE ACCENT LIGHT FIXTURE
- WALL MOUNTED LIGHT FIXTURE. VERIFY W/ ARCHITECT EXACT LOCATION & HEIGHT, BEFORE ROUGH-IN INSTALLATION.
- TRACK MOUNTED LIGHT FIXTURE. VERIFY W/ ARCHITECT EXACT LOCATION & HEIGHT, BEFORE ROUGH-IN INSTALLATION.
- INDICATES SWITCH NUMBER
- INDICATES FIXTURE TYPE
- ONE WAY SWITCH
- THREE WAY SWITCH
- INDICATES SWITCH W/ DIMMER
- INDICATES FIXTURES GANGED BY AREA
- INDICATES SWITCH TO EXHAUST FAN
- INDICATES SWITCH TO CEILING FAN
- INDICATES FIXTURE TO BE SWITCHED
- EXHAUST FAN / LIGHT (EF)
- SMOKE DETECTOR
- JUNCTION BOX
- OUTDOOR FOURPLEX
- VIDEO CABLE CONNECTION CABLE OR SATELLITE, SEE DETAIL
- SPEAKER, JUNCTION BOX IN CLG OR WALL (W)

## GROUND LEVEL CEILING PLAN

SCALE: 1/4"=1'-0"

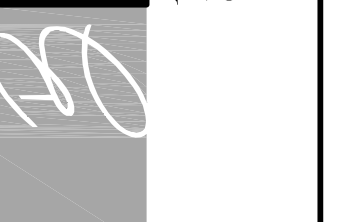


THE GRUENE HOUSE  
CINNAMON SHORE  
175 SEASIDE DR.  
PORT ARANSAS, TX 78373



620 N. Delaware  
Indianapolis, IN 46204  
317.262.1201, tel.  
317.262.1200, fax  
www.brennerdesign.com

BRENNER DESIGN  
Architect  
Construction Management



SHEET NO.

GROUND LEVEL  
REFLECTED CEILING  
PLAN

13 JAN 11

1 JUN 13

CIN3401R

A2.1