

THIS DRAWING AND THE DESIGN SHOWN IS THE PROPERTY OF ART LOVE DESIGN STUDIO. THE REPRODUCTION, COPYING, OR USE OF THIS DRAWING WITHOUT THE WRITTEN CONSENT OF ART LOVE DESIGN STUDIO IS PROHIBITED AND ANY INFRINGEMENT WILL BE SUBJECT TO LEGAL ACTION. ©2010 ART LOVE DESIGN STUDIO

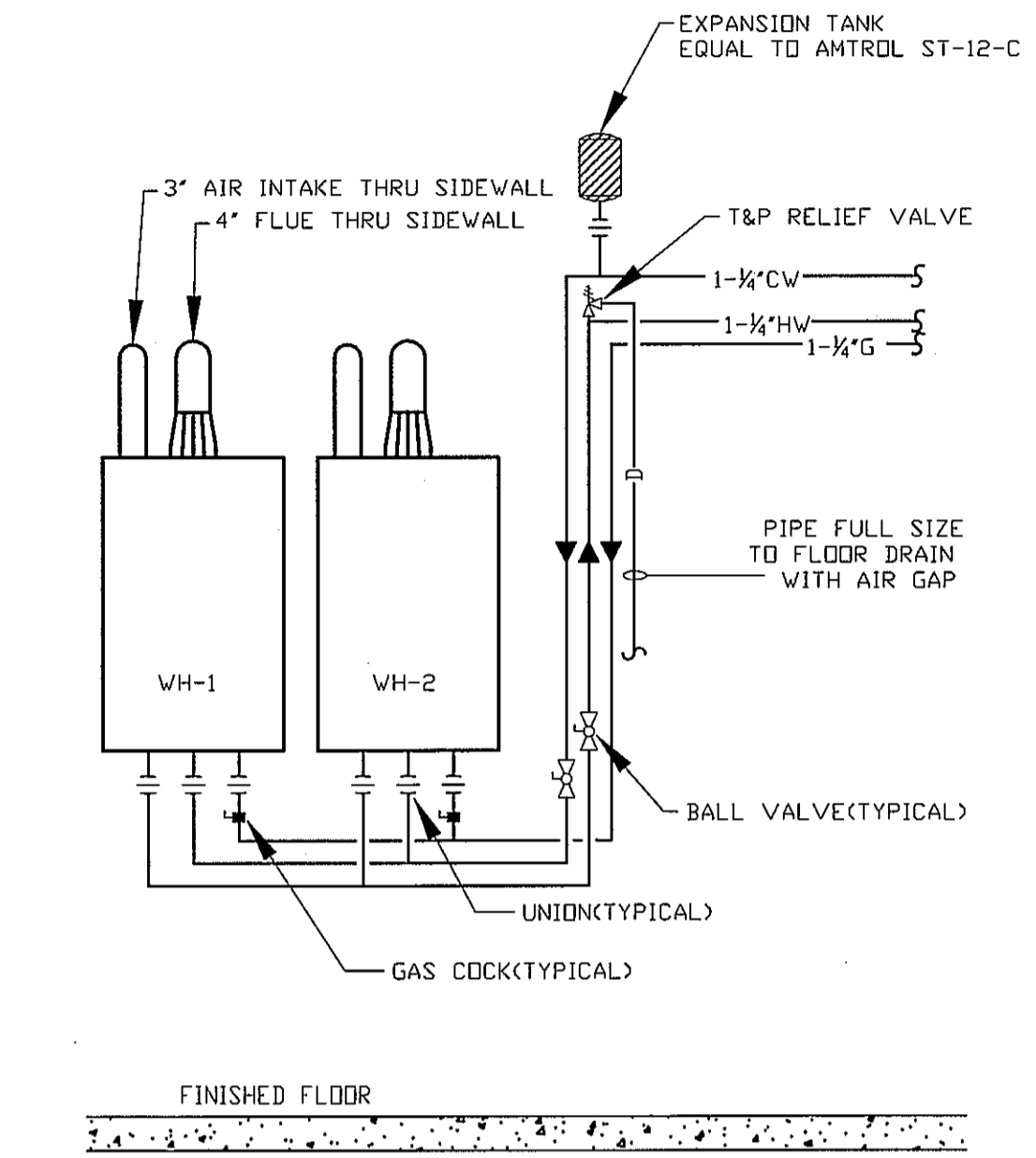
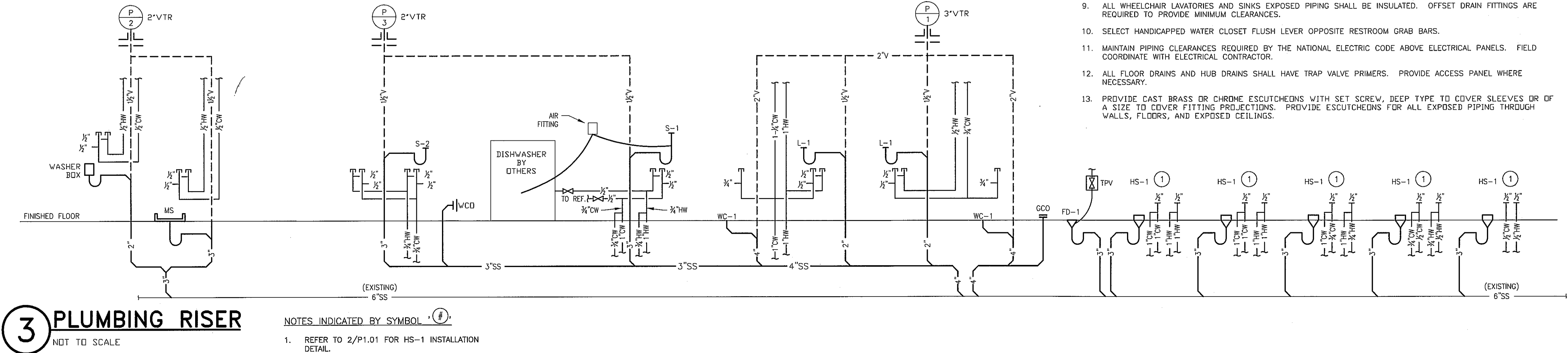
PLUMBING LEGEND	
	POINT OF CONNECTION, NEW TO EXIST DUCT/PIPE.
	GATE VALVE
	GLOBE VALVE
	CHECK VALVE
	BUTTERFLY VALVE
	BALL VALVE
	PLUG VALVE
	SOLENOID OPERATED VALVE
	GAS COCK
	GAS REGULATING VALVE
	STRAINER W/ BLOWDOWN GATE VALVE
	TEMPERATURE/ PRESSURE RELIEF VALVE
	P - TRAP
	CLEANOUT
	HOSE BIBB
	ELBOW TURNING DOWN
	ELBOW TURNING UP
	PIPE CAP
	DIRECTION OF FLOW
	DOMESTIC COLD WATER
	DOMESTIC HOT WATER
	DOMESTIC HOT WATER RETURN
	SANITARY SEWER
	VENT
	REFER TO ABBREVIATIONS FOR CONTENTS (E.G., SS = SANITARY SEWER)

ABBREVIATIONS	
ADA	AMERICAN DISABILITIES ACT
AFG	ABOVE FINISHED FLOOR
ARCH	ARCHITECT, ARCHITECTURAL
AV	ACID VENT
AW	ACID WASTE
BFF	BELOW FINISHED FLOOR
BFP	BACK FLOW PREVENTER
BFV	BUTTERFLY VALVE
BTUH	BRITISH THERMAL UNITS / HR.
BV	BALL VALVE
BYP	BYPASS
CA	COMPRESSED AIR
CD	CONDENSATE DRAIN LINE, EQUIP. DRAIN
CFM	CUBIC FEET PER MINUTE
CC	CLEANOUT
CONT	CONTINUATION
COORD	COORDINATE
dB	DECIBEL(S)
DB	DRY BULB TEMPERATURE
DDC	DIRECT DIGITAL CONTROL
DEG F	DEGREES FAHRENHEIT
DCW	DOMESTIC COLD WATER
DHW	DOMESTIC HOT WATER
DHR	DOMESTIC HOT WATER RETURN
DN	DIA
DN	DOWN
DYCO	DOUBLE YARD CLEANOUT
(E)	EXISTING
EA	EACH
EFF	EFFICIENCY
ELEV	ELEVATION
ELEC	ELECTRICAL
EWT	ENTERING WATER TEMPERATURE
EXIST	EXISTING
F	FIRE
F&I	FURNISH AND INSTALL
FDC	FLOOR CLEANOUT
FDC	FIRE DEPARTMENT CONNECTION
FPS	FEET PER SECOND
FT	FEET
G	NATURAL GAS
GC	GENERAL CONTRACTOR
GPM	GALLON PER MINUTE
GW	GREASE WASTE
HB	HOSE BIBB
HP	HORSE POWER
HR	HOUR
HVAC	HEATING, VENTILATION & AIR CONDITIONING
IN	INCHES
INV	INVERT ELEVATION
KEC	KITCHEN EQUIPMENT CONTRACTOR
KW	KILOWATT
KWH	KILOWATT HOUR
LWT	LEAVING WATER TEMPERATURE
MA	MEDICAL AIR
MAX	MAXIMUM
MBH	BTU/HR X 1,000
MECH	MECHANICAL
MV	MEDICAL VACUUM
N	NITROGEN
NA	NOT APPLICABLE
NFWH	NON FREEZE WALL HYDRANT
NPCW	NON POTABLE COLD WATER
NIC	NOT IN CONTRACT
NO2	NITROUS OXIDE
NTS	NOT TO SCALE
O	OXYGEN
OFD	OVERFLOW DRAIN
PH	PHASE (ELECTRIC)
POC	POINT OF CONNECTION
PSI	POUNDS PER SQUARE INCH
PVC	POLYVINYL CHLORIDE
PW	PURIFIED WATER
RD	ROOF DRAIN
RM	ROOM
REV	REVISION
RPZ	REDUCED PRESSURE ZONE BACKFLOW PREVENTER
SS	STORM DRAIN
SS	SANITARY SEWER
SW	SOFT WATER
T&P	TEMPERATURE AND PRESSURE RELIEF VALVE
TPV	TRAP PRIMER VALVE
TPV	TYPICAL
UG	UNDERGROUND
UF	UNDER FLOOR
UN	UNION
UN	UNLESS OTHERWISE NOTED
V	VACUUM
VTR	VENT THRU ROOF
W	WATT
W/O	WITHOUT
WCO	WALL CLEANOUT
WHA	WATER HAMMER ARRESTER
X	EXISTING TO REMAIN
YCO	YARD CLEANOUT
YH	YARD HYDRANT

PLUMBING FIXTURE SCHEDULE			
MARK	DESCRIPTION	MANUFACTURER & MODEL NO.	REMARKS
WC-1	WATERCLOSET	OWNER FURNISHED	FURNISHED BY OWNER. INSTALLED BY CONTRACTOR.
L-1	LAVATORY-ADA	PORCHER MODEL: 26020	WALL HUNG, WHITE FIRE CLAY, ZURN Z-1231 CARRIER, OPELLA BRUSHED NICKEL FAUCET #160.106 AND GRID STRAINER. DECOLAV 9100 SERIES P-TRAP, MCGUIRE 165 SUPPLIES AND TRUBRO INSULATION.
S-1	SINK-ADA	KRAUS MODEL: KHU-101R3-23	23"x18"x10" DEEP SINGLE BOWL, SELF RIMMING, 16 GAUGE STAINLESS STEEL, WITH DANZE COMO STAINLESS STEEL FAUCET 153244 WITH SINGLE LEVER HANDLE. BASKET STRAINER, MCGUIRE 8872 P-TRAP, 165 SUPPLIES, TRUBRO INSULATION.
S-2	BAR SINK	SIGNATURE HARDWARE MODEL: EXECUTIVE ZERO RADIUS TROUGH	32"x8.75"x6.5" DEEP TROUGH SINK, UNDERMOUNT, 16 GAUGE STAINLESS STEEL, W/ (2) OPELLA BRUSHED NICKEL FAUCETS #160.106 AND GRID STRAINER. MCGUIRE 8872 P-TRAP, 165 SUPPLIES, TRUBRO INSULATION.
HS-1	HAIR WASHING STATION	OWNER FURNISHED	FURNISHED BY OWNER. INSTALLED BY CONTRACTOR.
MS-1	MOP SINK	FIAT MODEL: MSB2424	24"x24" WHITE MOLDED STONE BASIN WITH CHROME FAUCET #830-AA. HOSE #832-AA, AND WALL GUARD.
FD-1	FLOOR DRAIN	ZURN MODEL: ZN-415-P	NICKEL TOP, 1/2" TRAP PRIMER CONNECTION. SIZE SHOWN ON DRAWINGS.
FS-1	FLOOR SINK	ZURN MODEL: ZN-1901	12"x12"x8" DEEP SUMP, WHITE A.R.E. HALF GRATE AND INTERIOR. SIZE SHOWN ON DRAWINGS.
WCO	WALL CLEANOUT	ZURN MODEL: Z-1441	SIZE SHOWN ON DRAWINGS.
FCO	FLOOR CLEANOUT	ZURN MODEL: Z-1400	SIZE SHOWN ON DRAWINGS.
TPV	TRAP PRIMER	PRECISION PLUMBING PRODUCTS MODEL: P-1	1/2" INLET AND OUTLET. PROVIDE ACCESS PANEL WHERE NECESSARY.
HA	HAMMER ARRESTER	ZURN MODEL: Z-1700	LOCATION SHOWN ON RISER DIAGRAMS

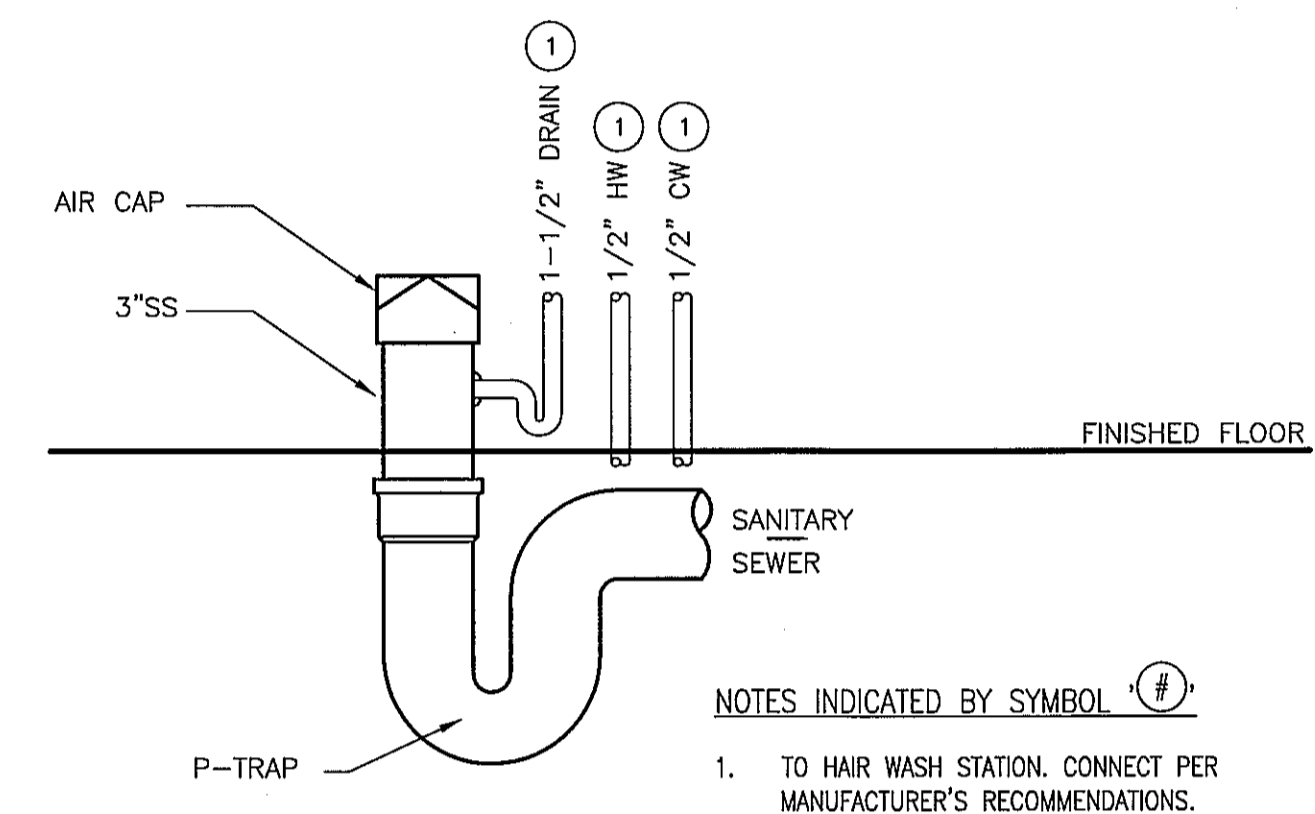
ON-DEMAND WATER HEATER SCHEDULE										
MARK	OUTLET TEMP. (°F)	MIN. FLOW (GPM)	MAX. FLOW (GPM)	FUEL	FUEL INPUT (BTUH)	EFFICIENCY (%)	WATER CONNECTION SIZE	FUEL CONNECTION SIZE	VOLT/PH	REMARKS
WH-1 & 2	120	.4	9.8	GAS	199,000	96	3/4"	3/4"	110/1	RINNAI RC98HPi-NG, NOTES 1-2

- NOTES:
- ALL WATER HEATER PIPING SHALL BE INSTALLED PER MANUFACTURER'S INSTRUCTIONS.
 - PROVIDE WATER HEATERS WITH MANUFACTURER'S SIDEWALL TERMINATION KIT.
 - FURNISH WITH MANUFACTURER'S EZ CONNECT CORD.



- NOTES:
- ALL WATER HEATER PIPING SHALL BE INSTALLED PER MANUFACTURER'S INSTRUCTIONS.
 - PROVIDE WATER HEATERS WITH MANUFACTURER'S SIDEWALL TERMINATION KIT.

1 WATER HEATER PIPING
NOT TO SCALE



- NOTES INDICATED BY SYMBOL (#)
- TO HAIR WASH STATION, CONNECT PER MANUFACTURER'S RECOMMENDATIONS.

2 HAIR WASH STATION PLUMBING DETAIL
NOT TO SCALE

- PLUMBING - SPECIFICATIONS AND NOTES:
- ALL PLUMBING INSTALLATIONS SHALL BE IN STRICT COMPLIANCE WITH THE INTERNATIONAL PLUMBING CODE 2006 AND ALL STATE AND LOCAL GOVERNING AUTHORITIES HAVING JURISDICTION.
 - ALL INSTALLATIONS SHALL COMPLY WITH THE INTERNATIONAL ENERGY CONSERVATION CODE 2006. DOMESTIC HOT AND COLD WATER PIPES SHALL HAVE A MINIMUM 1" THICK INSULATION UP TO 2" PIPE SIZE AND 1-1/2" THICK INSULATION ABOVE 2" PIPE SIZE. ALL WATER HEATERS NOT SERVED BY A CIRCULATING PUMP SHALL HAVE HEAT TRAPS.
 - SANITARY SEWER LINES 3 INCH AND GREATER SHALL BE SLOPED AT 1/8 INCH PER FOOT MINIMUM. SANITARY SEWER LINES 2 INCH SHALL BE SLOPED AT 1/4 INCH PER FOOT MINIMUM. SANITARY SEWER AND VENT PIPING SHALL BE AS FOLLOWS: (1) CAST IRON PIPE, SERVICE WEIGHT, HUB AND SPICOT JOINTS WITH NEOPRENE GASKETS. (2) PVC SCHEDULE 40 DWV PIPE. JOINTS SHALL BE SOCKET WELD, ABOVE GRADE PVC, ONLY IF ALLOWED BY LOCAL CODE.
 - POTABLE WATER PIPING, CONDENSATE DRAIN, AND RELIEF PIPING SHALL BE TYPE 'L' HARD DRAWN COPPER WITH WROUGHT COPPER FITTINGS. BURIED WATER PIPING SHALL BE TYPE 'K' COPPER. PVC SHALL NOT BE PERMITTED.
 - NATURAL GAS PIPING SHALL BE AS FOLLOWS: ABOVE GRADE: (1) SCHEDULE 40 STEEL BLACK PIPE, JOINTS TWO (2) INCHES AND UNDER MAY BE SCREW TYPE. JOINTS OVER TWO (2) INCHES SHALL BE WELDED. BELOW GRADE: GAS RATED POLYETHYLENE PIPE - ASTM D-2513, SDR11 WITH SOCKET WELD FITTINGS.
 - PLUMBING CONTRACTOR SHALL FIELD VERIFY EXACT SIZE, LOCATION, AND ELEVATION OF ALL EXISTING PLUMBING LINES AND UTILITIES.
 - PLUMBING CONTRACTOR SHALL REFER TO SHOP DRAWINGS OF EQUIPMENT FOR ROUGH-IN OPENINGS PRIOR TO BEGINNING WORK.
 - ALL HANDICAPPED ACCESSIBLE FIXTURES SHALL BE APPROVED TYPES WITH REQUIRED CONTROLS AND INSTALLED TO HEIGHTS AND CLEARANCES AS PRESCRIBED BY AMERICAN DISABILITIES ACT (ADA) AND TEXAS ACCESSIBILITY STANDARD (TAS). REFER TO ARCHITECTURAL DRAWINGS FOR ALL DIMENSIONED ADA MOUNTING HEIGHTS AND SPECIFIED CLEARANCES.
 - ALL WHEELCHAIR LAVATORIES AND SINKS EXPOSED PIPING SHALL BE INSULATED. OFFSET DRAIN FITTINGS ARE REQUIRED TO PROVIDE MINIMUM CLEARANCES.
 - SELECT HANDICAPPED WATER CLOSET FLUSH LEVER OPPOSITE RESTROOM GRAB BARS.
 - MAINTAIN PIPING CLEARANCES REQUIRED BY THE NATIONAL ELECTRIC CODE ABOVE ELECTRICAL PANELS. FIELD COORDINATE WITH ELECTRICAL CONTRACTOR.
 - ALL FLOOR DRAINS AND HUB DRAINS SHALL HAVE TRAP VALVE PRIMERS. PROVIDE ACCESS PANEL WHERE NECESSARY.
 - PROVIDE CAST BRASS OR CHROME ESCUTCHEONS WITH SET SCREW, DEEP TYPE TO COVER SLEEVES OR OF A SIZE TO COVER FITTING PROJECTIONS. PROVIDE ESCUTCHEONS FOR ALL EXPOSED PIPING THROUGH WALLS, FLOORS, AND EXPOSED CEILINGS.

(NOTE: ALL SYMBOLS SHOWN ARE NOT NECESSARILY USED ON DRAWINGS)