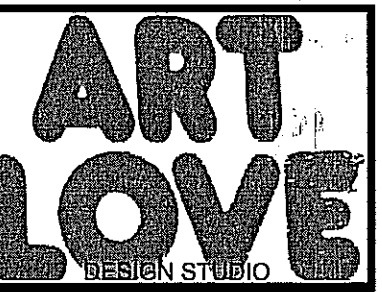


THIS DRAWING AND THE DESIGN SHOWN IS THE PROPERTY OF ART LOVE DESIGN STUDIO. THE REPRODUCTION, COPYING, OR USE OF THIS DRAWING WITHOUT THE WRITTEN CONSENT OF ART LOVE DESIGN STUDIO IS PROHIBITED AND ANY INFRINGEMENT WILL BE SUBJECT TO LEGAL ACTION. ©2010 ART LOVE DESIGN STUDIO



ART LOVE DESIGN STUDIO  
6606 HUNTERS RIDGE  
DALLAS, TX 75248  
ph. 940.595.2739

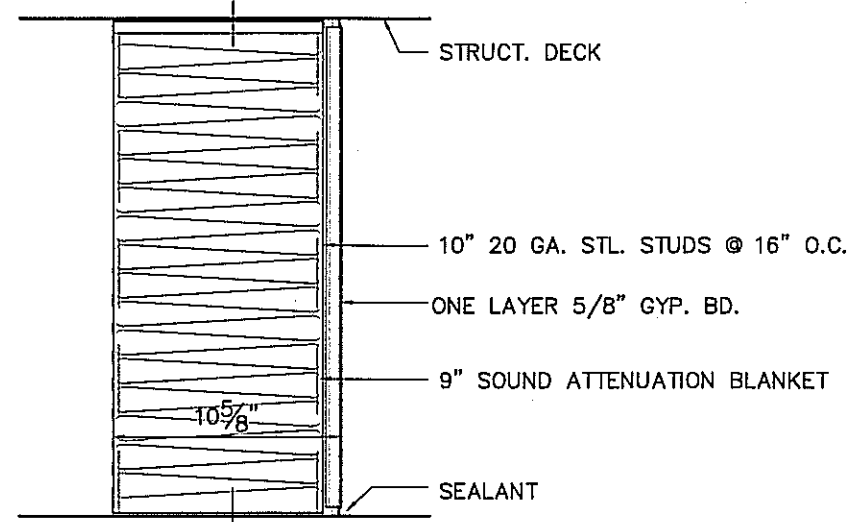
**FRINGE SALON AND COLOR BAR**  
2400 WEST ALABAMA HOUSTON, TEXAS 77098

REVISIONS:

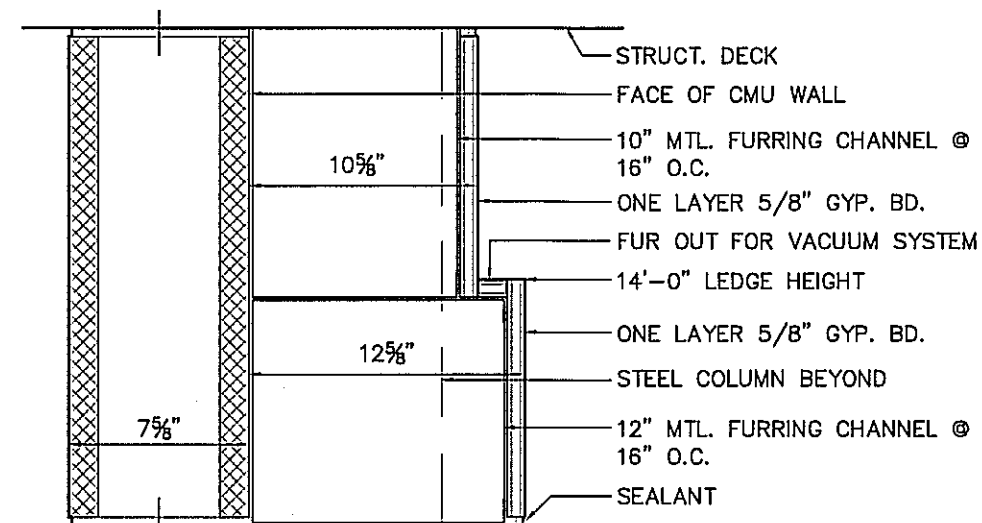
PROJECT NUMBER:  
**1001**  
DATE:  
**10.13.10**  
ISSUE:  
**CONSTRUCT**  
DRAWING TYPE:  
**SITE PLAN**  
DRAWING NUMBER:  
**A1.01**

DOOR SCHEDULE					SPECIFICATION							REMARKS:
NO.	TYPE	WIDTH	HEIGHT	THK.	MANUFAC.	MAT'L.	DOOR FINISH	HARDWARE SET	DEAD BOLT PRIVACY	HINGES	DOOR STOPS	
101	A	3'-0"	7'-0"	1 3/4"	-	SOLID CORE WOOD	PTD. WHITE	OMNIA 43 LATCHSET US32D	OMNIA 6000 PRIVACY BOLT US32D	OMNIA 985/35 US32D (3)	OMNIA 7001	WI AMEROCK AME-BH26542-SS HOOK @ 5'-8" A.F.F.
102	A	3'-0"	7'-0"	1 3/4"	-	SOLID CORE WOOD	PTD. WHITE	OMNIA 43 LATCHSET US32D	OMNIA 6000 PRIVACY BOLT US32D	OMNIA 985/35 US32D (3)	OMNIA 7001	WI AMEROCK AME-BH26542-SS HOOK @ 5'-8" A.F.F.
103	A	3'-0"	7'-0"	1 3/4"	-	SOLID CORE WOOD	PTD. WHITE	OMNIA 43 LATCHSET US32D	OMNIA 6000 PRIVACY BOLT US32D	OMNIA 985/35 US32D (3)	-	WI AMEROCK AME-BH26542-SS HOOK @ 5'-8" A.F.F.
104	A	3'-3"	7'-0"	1 3/4"	-	SOLID CORE WOOD	PTD. WHITE	OMNIA 43 LATCHSET US32D	OMNIA 6000 PRIVACY BOLT US32D	OMNIA 985/35 US32D (3)	OMNIA 7001	WI AMEROCK AME-BH26542-SS HOOK @ 5'-8" A.F.F.
105	A	3'-0"	7'-0"	1 3/4"	-	SOLID CORE WOOD	PTD. WHITE	OMNIA 43 LATCHSET US32D	OMNIA 6000 PRIVACY BOLT US32D	OMNIA 985/35 US32D (3)	OMNIA 7001	WI (2) AMEROCK AME-BH26542-SS HOOK @ 5'-8", 3'-4" A.F.F.

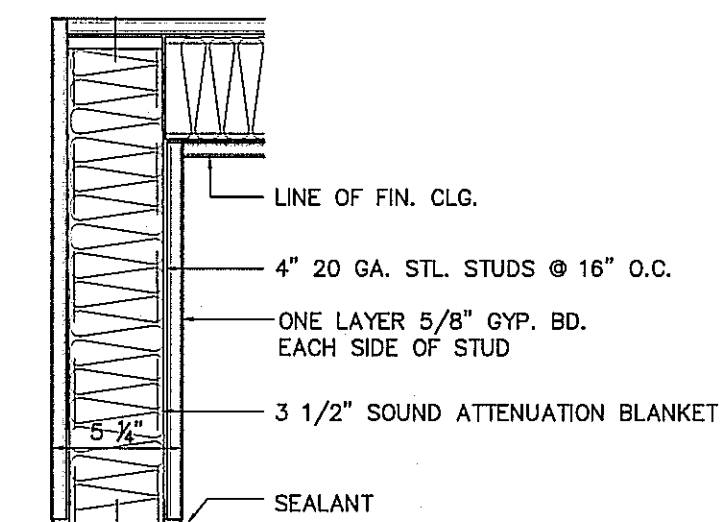
**DOOR SCHEDULE 01**  
SCALE: 1/4"=1'-0"



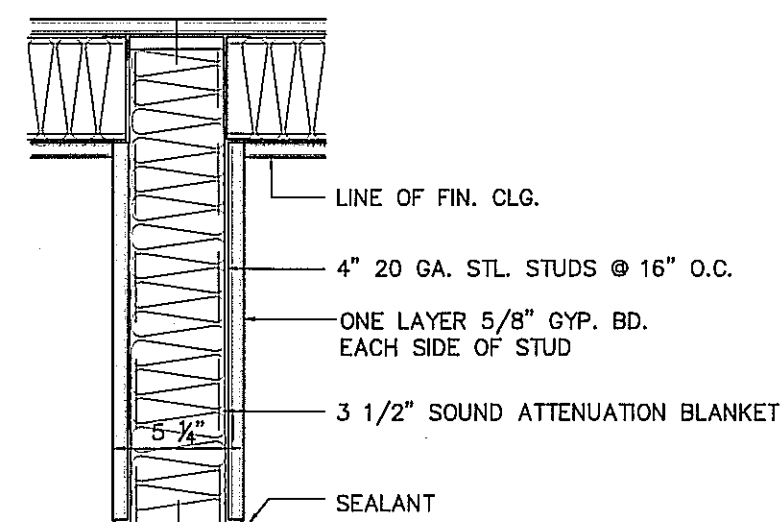
**H** NON-RATED



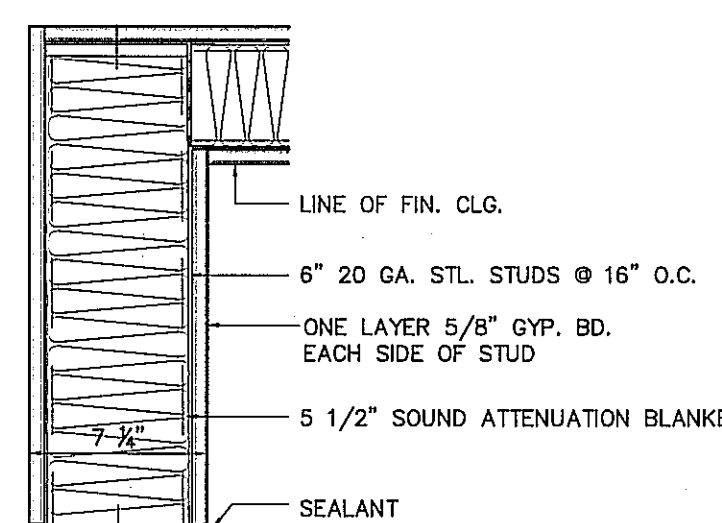
**G** 1 HOUR RATED UL914



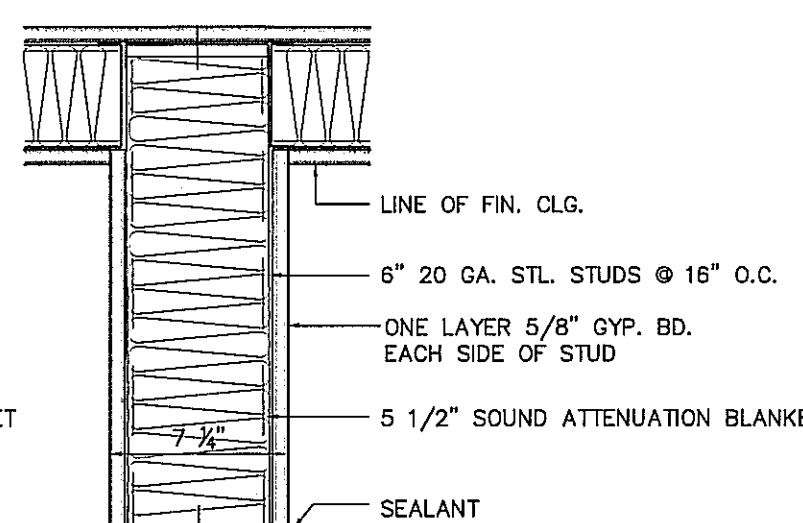
**F** NON-RATED



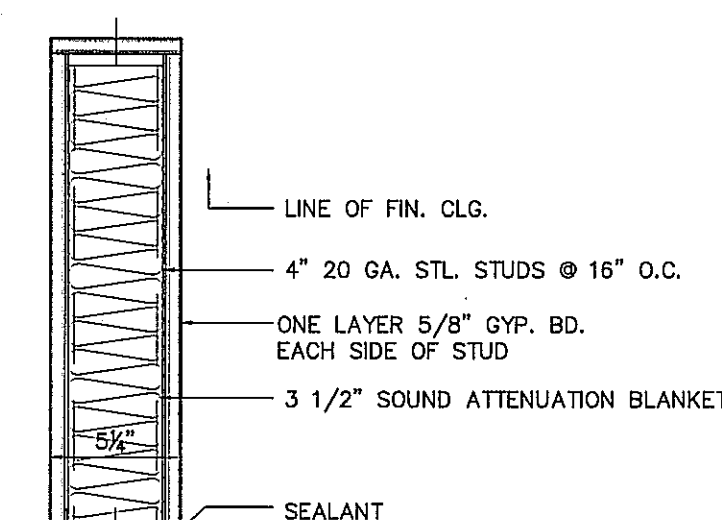
**E** NON-RATED



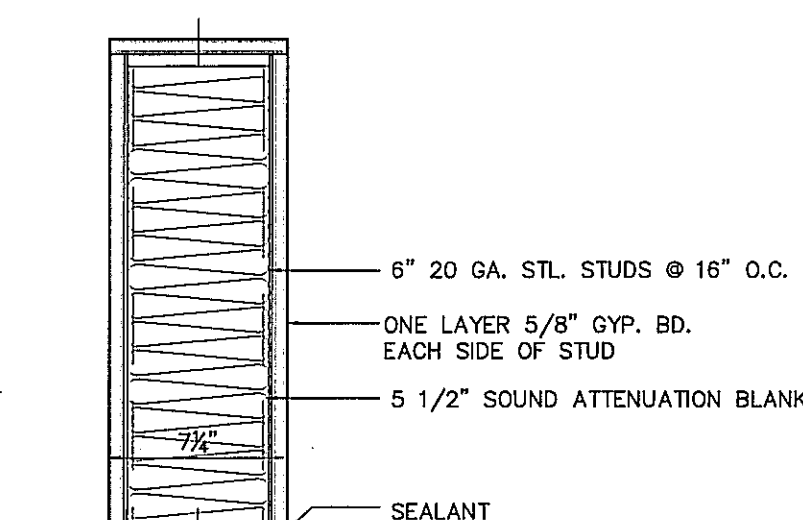
**D** NON-RATED



**C** NON-RATED

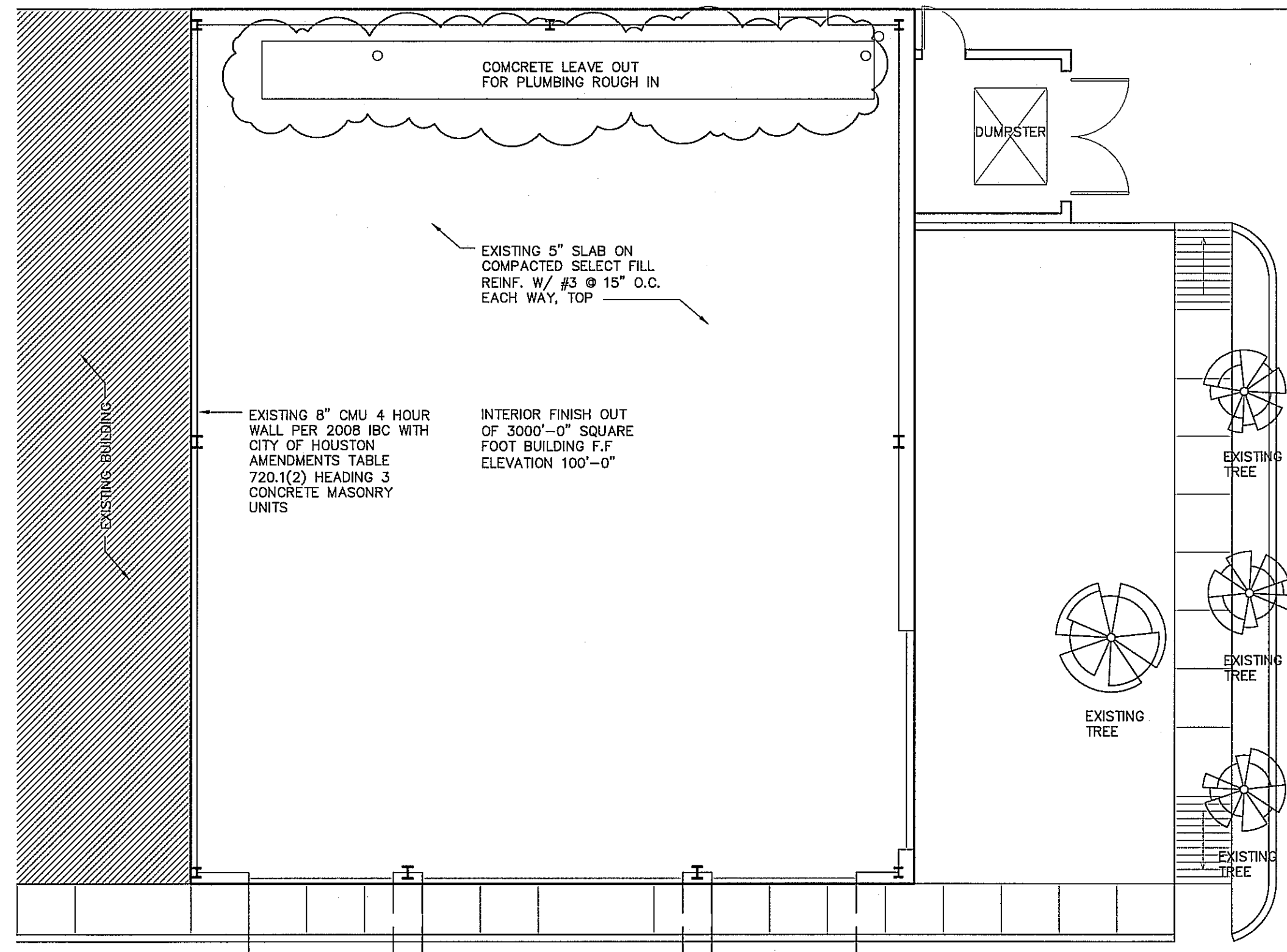
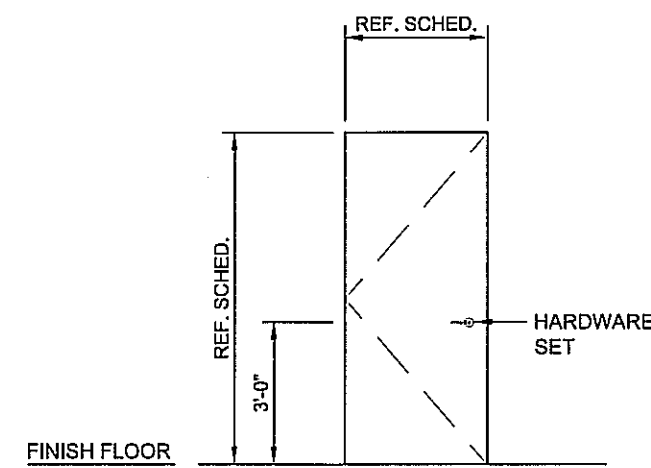


**B** NON-RATED



**A** NON-RATED

**WALL TYPES 03**  
SCALE: 1 1/2"=1'-0"



**EXISTING SITE PLAN 02**  
SCALE: 1/8"=1'-0"

**INDEX OF DRAWINGS**

ARCHITECTURAL	DESCRIPTION
10.13.10 A1.01	SITE PLAN / PROJECT DATA / DOOR SCHEDULE / WALL TYPES
10.13.10 A2.01	FLOOR PLAN / SCHEDULES
10.13.10 A2.02	ROOF PLAN
10.13.10 A3.01	REFLECTED CEILING PLAN
10.13.10 A4.01	INTERIOR ELEVATIONS
10.13.10 A4.02	INTERIOR ELEVATIONS
10.13.10 A4.03	INTERIOR ELEVATIONS
10.13.10 A4.04	INTERIOR ELEVATIONS
10.13.10 A4.05	INTERIOR ELEVATIONS
10.13.10 A5.01	CASEWORK DETAILS
10.13.10 A5.02	CASEWORK DETAILS
10.13.10 A5.03	CASEWORK DETAILS
10.13.10 A5.04	CASEWORK DETAILS
10.13.10 A5.05	CASEWORK DETAILS
10.13.10 A5.06	CASEWORK DETAILS
10.13.10 A5.07	CASEWORK DETAILS
10.13.10 F1.01	FLOOR PLAN - FURNITURE / SCHEDULE
STRUCTURAL	DESCRIPTION
10.13.10 S1.01	TYPICAL DETAILS
10.13.10 S2.01	WALL FRAMING PLAN
10.13.10 S2.02	CEILING FRAMING PLAN
MEP	DESCRIPTION
10.13.10 M1.01	SCHEDULES / DETAILS
10.13.10 M2.01	FLOOR PLAN - HVAC
10.13.10 E1.01	NOTES
10.13.10 E1.02	LIGHTING FLOOR PLAN - ELECTRICAL
10.13.10 E1.03	FLOOR PLAN - ELECTRICAL
10.13.10 E1.04	NOTES / SCHEDULES
10.13.10 P1.01	PLUMBING - NOTES / DETAILS
10.13.10 P2.01	FLOOR PLAN - PLUMBING

**SCOPE OF WORK**

- DESCRIPTION**
- EXTERIOR WALLS TO REMAIN
  - EXTERIOR WINDOWS TO REMAIN - CLEAN GLASS
  - INTERIOR WALLS TO BE BUILT TO 10'-0", 12'-0", AND 16'-0" HEIGHTS - REFER PLAN
  - ALL NEW SHEETROCK WALLS TO HAVE TAPE/BED/TEXTURE/PAIN WITH 4" WOOD BASE - PAINTED
  - ALL DOORS TO BE SOLID CORE WOOD DOORS - PAINTED, PROVIDE ALL NECESSARY HARDWARE INCLUDING LOCKS AND CLOSURES
  - NEW CABINETRY THROUGHOUT
  - NEW OFFICE
  - NEW BREAK ROOM WITH KITCHENETTE AND STORAGE LOCKERS - PROVIDE ALL NECESSARY HARDWARE INCLUDING LOCKS AND HINGES
  - NEW SHAMPOO AREA
  - NEW HAIR STYLING AREA
  - NEW COLOR BAR WITH CABINETRY
  - NEW RECEPTION AREA WITH DESK
  - MECHANICAL FINISH OUT
  - ELECTRICAL FINISH OUT
  - PLUMBING FINISH OUT
  - NEW FINISH OUT RESTROOMS - PROVIDE ALL FIXTURES AND ACCESSORIES AT REST ROOMS

**PROJECT NOTES**

- THE CONTRACTOR SHALL PERFORM ALL WORK AS DESCRIBED IN GOODFAITH AND IN COMPLIANCE WITH ALL APPLICABLE CODES AND ORDINANCES.
- THE CONTRACTOR SHALL CAREFULLY REVIEW THE DRAWINGS AND VERIFY ALL DIMENSIONING. ANY ERRORS, INCONSISTANCIES OR OMISSIONS, OR AMBIGUITIES BETWEEN THE DRAWINGS AND THE SITE CONSTRUCTION CONDITIONS SHALL BE REPORTED TO THE DESIGNER PRIOR TO CONSTRUCTION.
- THE CONTRACTOR SHALL PROTECT EXISTING TREES TO REMAIN.
- THE CONTRACTOR SHALL VERIFY THE LOCATION OF ALL UTILITIES SERVING THE SITE PRIOR TO CONSTRUCTION.
- THE CONTRACTOR TO REMOVE EXISTING 3/4" SERVICE PIPE, CONTRACTOR TO INSTALL NEW 1-1/2" SERVICE PIPE.
- DO NOT SCALE DRAWINGS. CONTACT THE DESIGNER JOHN HOSSLEY @ 940.595.2739 FOR SUPPLEMENTAL DIMENSIONAL INFORMATION.
- CONTRACTOR TO VERIFY ALL APPLIANCE DIMENSIONS. CONTRACTOR TO COORDINATE ALL APPLIANCE DIMENSIONS WITH CABINETMAKER, ELECTRICIAN, PLUMBER, HVAC, AND ANY OTHER SUBCONTRACTORS REQUIRED FOR PROPER INSTALLATION.
- CONTRACTOR TO PROVIDE ANY ADDITIONAL BLOCKING OR SUPPLEMENTAL FRAMING AS DIRECTED BY THE DESIGNER.

**PROJECT SUMMARY**

DESCRIPTION	DETAILS
PROJECT NAME:	FRINGE SALON AND COLOR BAR
OWNER:	ASHLEY TOLIVER WILLIAMS
CONTACT NAME:	ASHLEY TOLIVER WILLIAMS
PROJECT LOCATION:	2400 WEST ALABAMA HOUSTON, TEXAS 77098
PROJECT DESCRIPTION:	THE FINISH OUT OF AN EXISTING SHELL UNIT IN A RETAIL CENTER.
ZONING CLASSIFICATION	
APPLICABLE CODES	2003 INTERNATIONAL BUILDING CODE (2003 IBC) WITH HOUSTON AMENDMENTS 2000 UNIFORM MECHANICAL CODE (2003 IMC) WITH HOUSTON AMENDMENTS 2000 UNIFORM PLUMBING CODE (2003 UPC) WITH HOUSTON AMENDMENTS 2008 NATIONAL ELECTRICAL CODE (2003 NEC) WITH HOUSTON AMENDMENTS 2000 INTERNATIONAL FIRE CODE (2003 IFC) WITH HOUSTON AMENDMENTS 2004 ASHRAE 90.1 WITH HOUSTON AMENDMENTS AMERICANS WITH DISABILITIES ACT (ADA) STATE OF TEXAS ACCESSIBILITY STANDARDS (TAS)
BUILDING PLANNING	
OCCUPANCY CLASSIFICATION:	GROUP B: BUSINESS
CONSTRUCTION TYPE:	TYPE II-B
FIRE PROTECTION	
FIRE PROTECTION SYSTEM:	NO

