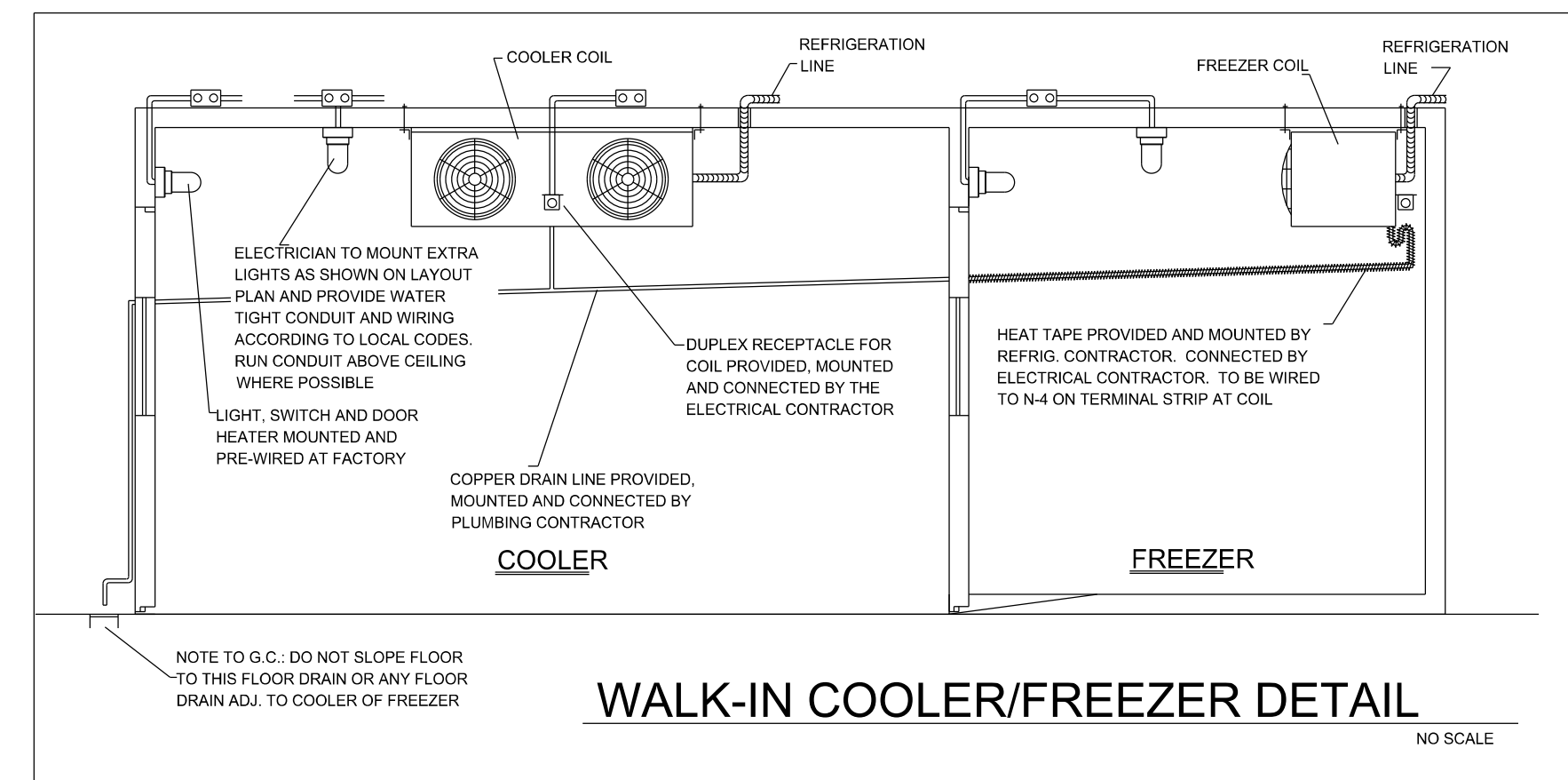
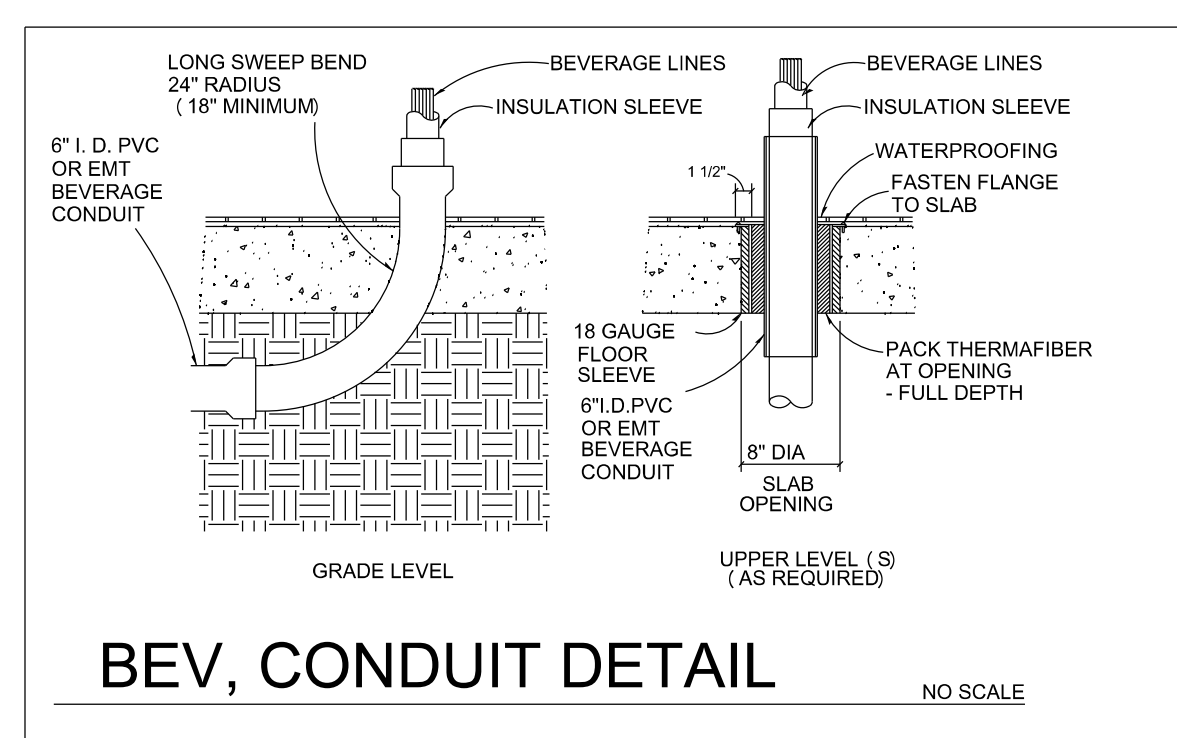


KITCHEN PLUMBING

3/16" = 1'-0"



WALK-IN COOLER/FREEZER DETAIL



BEV. CONDUIT DETAIL

PLUMBING LEGEND

○	HW & CW - HOT/COLD WATER	⊗	REMOTE REFRIGERATION LINES
■	GAS - LP OR NATURAL	⊕	BEVERAGE SYSTEM CONDUIT
∨	DIRECT WASTE	- - -	FIELD CONNECTIONS
∨	INDIRECT WASTE	⊙	STEAM SUPPLY
⊙	RUN TO FLOOR DRAIN	⊕	STEAM RETURN
⊕	GFD-GENERAL FLOOR DRAIN	⊕	GAS VALVE
⊕	FFD-FUNNEL FLOOR DRAIN	⊕	WALL CHASE FOR BEV. &/OR REFRIGERATION LINES
⊕	FS-FLOOR SINK W/ GRATE		

MECHANICAL SCHEDULE

ITEM #	DESCRIPTION	QUANTITY	P.S.E.C.	OTHER	GAS		WATER		WASTE		NOTES
					MBTU/HR	HEIGHT A.F.F.	WATER	HEIGHT A.F.F.	WASTE	HEIGHT A.F.F.	
102A	COOLER REFRIG. COIL	1	X				5/8" IW	RFD	RLFRC		
102C	FREEZER REFRIG. COIL	1	X				5/8" IW	RFD	RLFRC		
104	MOP SINK	1		X			1/2" CW & HW	36"	2"	FLOOR	
105	HAND SINK	3	X				1/2" CW & HW	27"	1-1/2"	21"	
109	WORKTABLE W/ SINK	1	X				1/2" CW & HW	18"	1-1/2" IW	RFD	
111	THREE COMP. SINK	1	X				3/4" CW & HW	18"	3	2" IW	RFD
117	FRYER	2	X	3/4"	140 M	18"					
119	GRIDDLE	1	X	3/4"	135 M	18"					
120	CHARBROILER	1	X	3/4"	180 M	18"					
122	RANGE	1	X	3/4"	203 M	18"					
123	RANGE W/ GRIDDLE	1	X	3/4"	139 M	18"					
124	STOCK POT RANGE	1	X	3/4"	250 M	18"					
135.1	COUNTER W/ HOT WELLS	1	X				1" IW	RFD			
136.1	DROP-IN ICE PAN	1	X				1" IW	RFD			
141	SOILED DISHTABLE	1	X				1-1/2" IW	RFD	QUICK DRAIN BY DISHMACHINE		
141.1	SCRAPPER SINK	1	X				3/4" CW & HW	18"	2"	7"	
143	DISHMACHINE	1	X				NOTE				VRWS
146	ICE MAKER & BIN	1	X				1/2" CW	60"	3/8" 3/4" IW	RFD	RUN 1/2" CW TO ICE MAKER
147	TRENCH LINER	1	X				NOTE				V.R.W.S.
148	SODA DISPENSER	1	X				NOTE				2
149.1	DROP IN HAND SINK	1	X				1/2" CW & HW	18"	1-1/2"	12"	RFD
151	COFFEE BREWER	1	X				1/2" CW	48"			V.R.W.S.
152	GLASS FILLER	1	X				1/2" CW	18"	1" IW	RFD	
153	TEA BREWER	1	X				1/2" CW	48"			V.R.W.S.
206	FROZEN DRINK MACHINE	2	X				1/2" IW	RFD	RLFRC		
207	HAND SINK	1	X				1/2" CW & HW	12"	1-1/2"	10"	
208	BLENDER STATION	2	X				1/2" CW & HW	12"	1-1/2" IW	RFD	
209	ICE/COCKTAIL STATION	2	X				3/4" IW	RFD			
210	BEER TAPS	2	X				1" IW	RFD			
211	SODA GUNS	2	X				NOTE				BY OTHERS-V.R.W.S.
213	BAR SINK	1	X				1/2" CW & HW	12"	3	1-1/2" IW	RFD
217	DRAINBOARD	3	X				1-1/2" IW	RFD			

PLUMBING NOTES

PLUMBING CONTRACTOR:

A. ALL WORK TO BE IN COMPLIANCE WITH PREVAILING CODES.

B. VERIFY W/ ARCHITECT AND/OR OWNER FOR ANY PLUMBING CONNECTIONS FOR EQUIPMENT NOT SHOWN OR SUPPLIED BY STRATEGIC EQUIPMENT.

C. ALL DRAIN LINES TO BE TRAPPED. PLUMB. CONTR. TO SUPPLY ALL INDIRECT LINES WITH A TRAP AND AN AIR GAP AT FLOOR RECEPTACLE. (AIR GAP TO BE A MIN. OF 2 TIMES THE DIA. OF THE WASTE LINE)

D. INSULATE 140° F OR HIGHER WATER LINES RUNNING FROM WATER HEATER TO FINAL HOOKUP ON EQUIPMENT.

E. PLUMBING CONTRACTOR TO MOUNT ALL DISPOSERS, FAUCETS, BASKET DRAINS, LEVER DRAINS, TO/ON KITCHEN EQUIPMENT WITH FINAL CONNECTION TO ROUGH-IN (S) AFTER EQUIPMENT IS SET IN PLACE.

F. ALL PLUMBING CONNECTION HEIGHTS ARE TO CENTER LINE.

G. COOKING EQUIPMENT GAS PRESSURE TO BE 7"-14" W.C. FOR NATURAL GAS AND 10" W.C. FOR LP GAS UNLESS NOTED OTHERWISE.

H. GAS QUICK DISCONNECTS AND SOLENOID VALVES TO BE SUPPLIED BY STRATEGIC EQUIPMENT FOR INSTALLATION BY DIV. #15.

I. SINK FAUCETS AND SINK DRAINS ARE FURNISHED LOOSE. FOR INSTALLATION BY PLUMB. CONTRACTOR. (TRIM AND COMPLETE ALL FINAL PLUMBING CONNECTIONS AS REQUIRED)

J. ALL CONNECTION NUMBERS DIMENSIONED ON THIS PLAN ARE ROUGH-IN LOCATIONS. THE SIZE SHOWN IN THE SCHEDULE AND DESCRIPTION ARE THE CONNECTIONS FOR THAT PIECE OF EQUIPMENT. SIZING OF ROUGH-INS ARE TO BE DETERMINED BY PLUMB. CONTR.

K. PLUMB. CONTR. TO PROVIDE AND INSTALL A "WATTS 90" (OR EQUAL) CHECK VALVE ON CARBONATOR SUPPLY INLET LINES.

L. PLUMB. CONTR. TO PROVIDE ALL NECESSARY SHUT-OFF VALVES, BACKFLOW PREVENTION DEVICES, PRESSURE REGULATORS, ETC. AHEAD OF EQUIPMENT CONTROL VALVE, UNLESS NOTED.

M. PLUMB. CONTR. TO MAKE ADJUSTMENTS IN ROUGH-IN LOCATIONS FOR BEAMS, FOOTINGS AND ETC. IF REQUIRED.

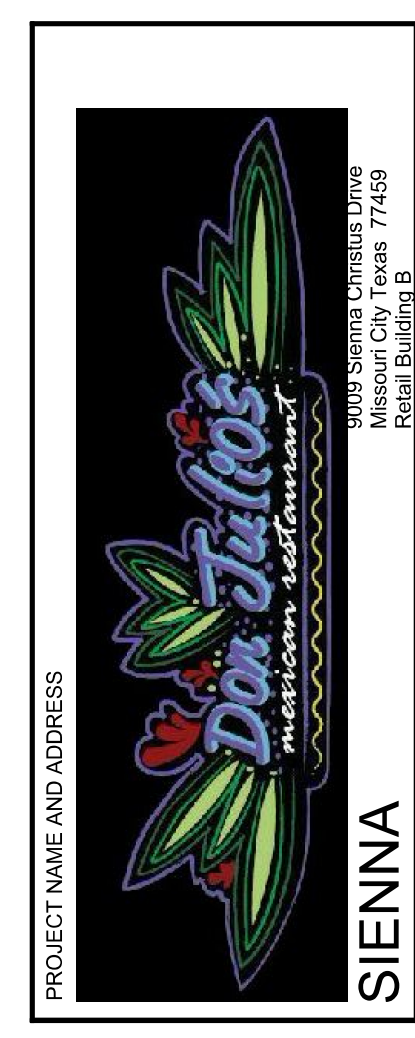
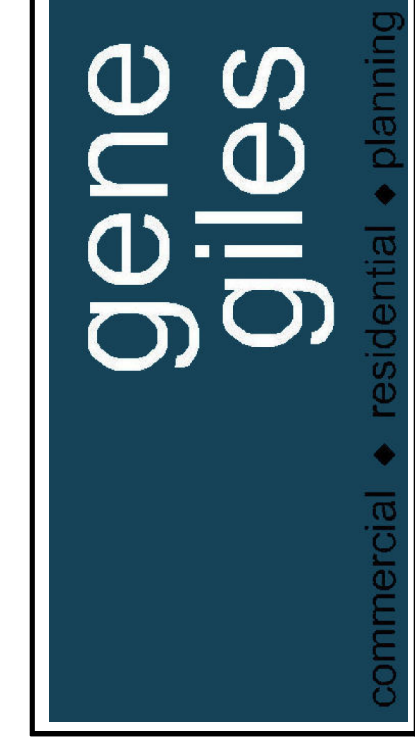
N. PLUMBING CONTR TO PROVIDE AND INSTALL WATER HAMMER ARRESTORS AND PRESSURE REDUCING VALVES (PRV) IN LINE BEFORE ALL SOLENOID VALVES. IE: AT DISHMACHINE, DISPOSER (S) , ICE MAKER (S) , STEAMER (S) , ETC.

O. PLUMB. CONTR TO PROVIDE AND INSTALL ALL INDIRECT WASTE (IE WALK-IN COOLERS/FREEZERS, REFRIG. BASES, HOT WELLS, ETC)

P. VERIFY W/ HEALTH AND PLUMBING CODES IF WASTES SHOULD BE DIRECT OR INDIRECT. VERIFY IF CLEAN WATER WASTES ARE RECD TO EMPTY INTO STORM SEWERS.

(P) 713.680.1333
(F) 713.680.1334

3301 Edloe Suite 100
Houston TX 77027



DO NOT SCALE DRAWINGS CONTRACTOR TO VERIFY ALL EXISTING CONDITIONS AND DIMENSIONS-NOTIFY DESIGNER OF ANY DISCREPANCIES PRIOR TO BEGINNING CONSTRUCTION.

VERSION ID	DATE
PERMIT REVIEW	02/10/10

PROJECT NUMBER
FCF5625
SCALE
AS NOTED
SHEET ID
PLUMBING AND MECH
SHEET NUMBER
K101

ISSUE DATE - 5-26-2010
PRINT DATE - @date

THIS PLAN IS COPYRIGHT PROTECTED AND THE SOLE PROPERTY OF GENE GILES (ANY UNAUTHORIZED COPIES OR DISTRIBUTION IS A VIOLATION OF FEDERAL COPYRIGHT LAWS) SUBJECT TO PROSECUTION UNDER THE GUIDELINES OF THE FEDERAL COPYRIGHT ACT