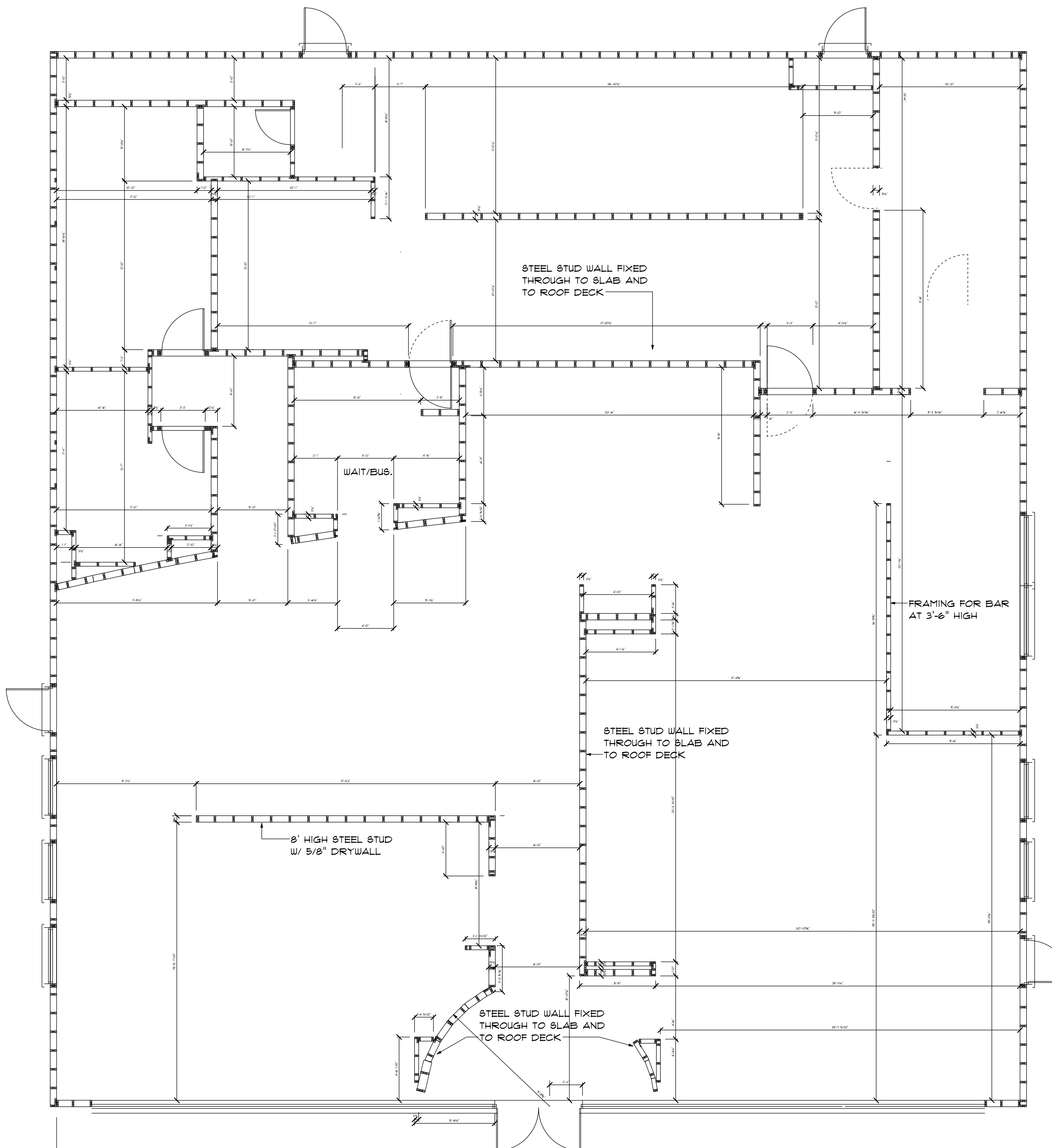


MEZZANINE FRAMING LAYOUT

SCALE: 3/16" = 1'-0"



MAIN FLOOR FRAMING LAYOUT

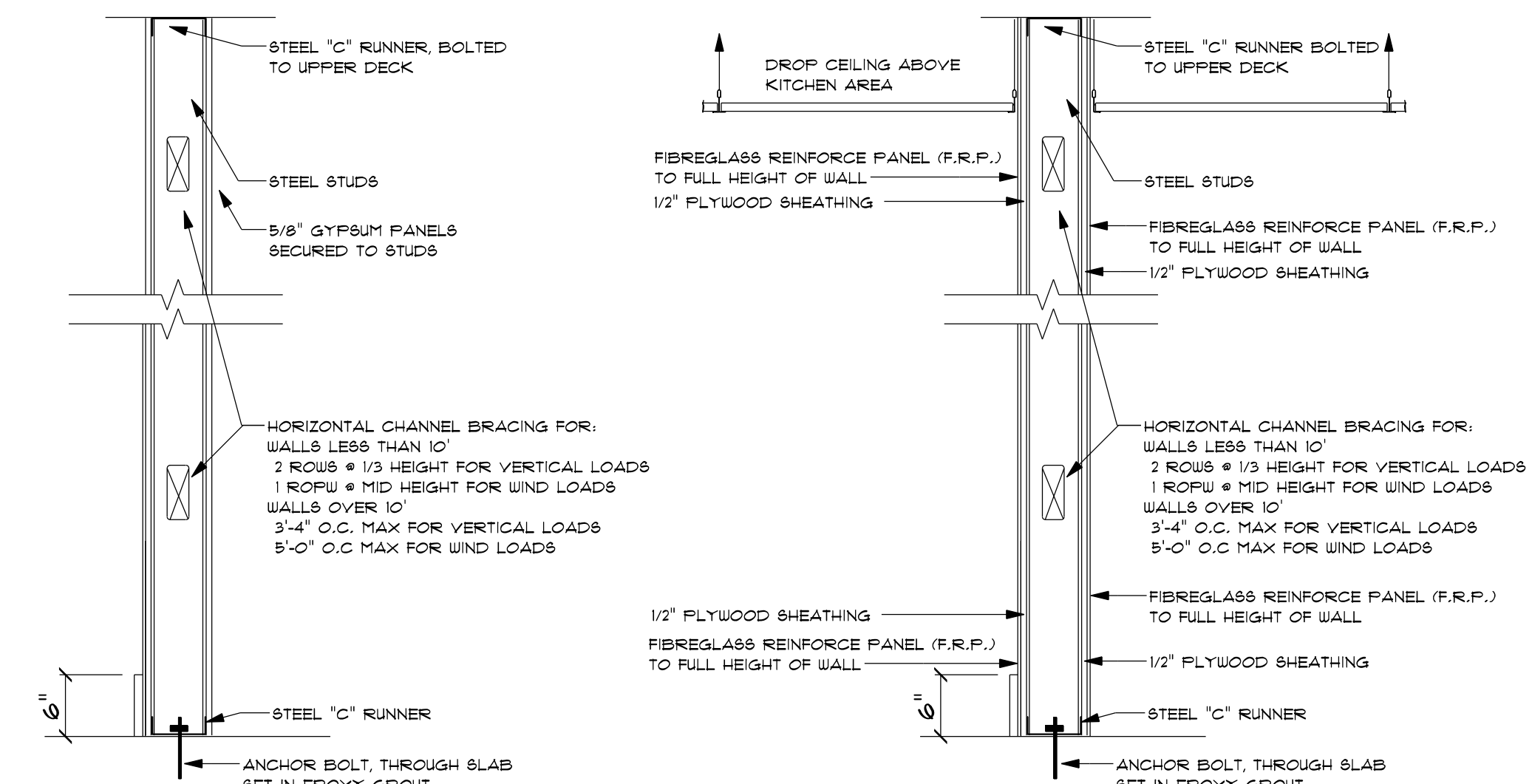
SCALE: 3/16" = 1'-0"

WALL NOTES

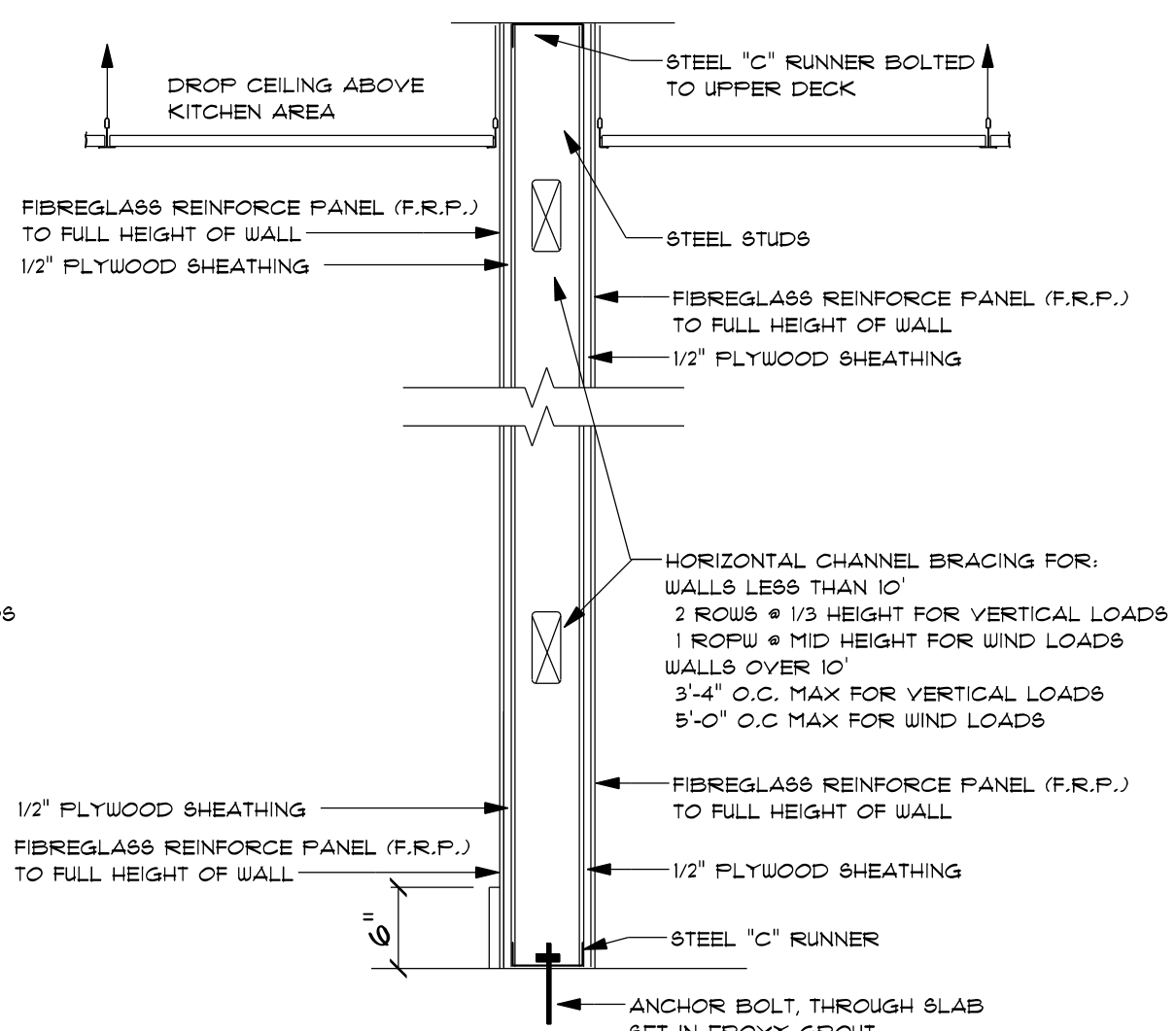
- 3 5/8" 25 GA. METAL STUDS AT 16" O.C. WITH 5/8" TYPE 'X' GYP. BD. ON EACH SIDE FROM FLOOR TO ROOF DECK OR BOTTOM OF GYP. BD. CEILING (WHERE APPLICABLE).
- 3 5/8" 25 GA. METAL STUDS AT 16" O.C. TO ROOF DECK WITH 5/8" CEMENT BOARD FROM FLOOR TO 18" A.F.F. AND 5/8" FIRE TREATED, MARINE GRADE PLYWOOD FROM 18" A.F.F. TO ROOF DECK. ON OFFICE SIDE, 5/8" TYPE 'X' DENS SHIELD GYP. BD. TO 8'-0" A.F.F. AND 5/8" TYPE 'X' GYP. BD. TO ROOF DECK. ON RESTROOM SIDE, 5/8" TYPE 'X' MOISTURE RESISTANT GYP. BOARD TO CEILING. SEE DETAIL 5/A106.
- 3 5/8" 25 GA. METAL STUDS AT 16" O.C. FROM FLOOR TO ROOF DECK WITH 5/8" CEMENT BOARD FROM FLOOR TO 18" A.F.F. AND 5/8" TYPE 'X' WATER RESISTANT GYP. BD. FROM 18" A.F.F. TO TOP OF WALL ON KITCHEN SIDE. ON POINT OF SERVICE SIDE, 5/8" TYPE 'X' MOISTURE RESISTANT GYP. BOARD TO CEILING. SEE DETAIL 5/A106.
- 3 5/8" 25 GA. METAL STUDS AT 16" O.C. TO ROOF DECK WITH 5/8" TYPE 'X' GYP. BD. ON ONE SIDE TO ROOF DECK ABOVE AND, ON THE RESTRM. SIDE, 5/8" CEMENT BOARD FROM FLOOR TO 3'-0" A.F.F. AND 5/8" WATER RESISTANT TYPE 'X' GYP. BD. FROM 3'-0" A.F.F. TO CEILING. SOUND BATTS IN WALL CAVITY. FLOOR TO ROOF DECK AT RESTROOMS. SEE DETAIL 5/A106.
- 6" 25 GA. METAL STUDS AT 16" O.C. TO BOTTOM OF TRUSSES WITH CEMENT BOARD FROM FLOOR TO 6" ABOVE CEILING ON ONE SIDE AND 5/8" MARINE GRADE PLYWOOD ON THE OTHER SIDE.
- 3 5/8" METAL STUDS AT 16" O.C. FROM FLOOR TO ROOF DECK WITH 5/8" CEMENT BOARD FROM FLOOR TO 18" A.F.F. AND 5/8" TYPE 'X' WATER RESISTANT GYP. BD. FROM 18" A.F.F. TO TOP OF WALL.
- 6" 25 GA. METAL STUDS AT 16" O.C. FINISH INTERIOR FACE WITH 5/8" CEMENT BOARD FROM FLOOR TO 3'-0" A.F.F. AND 5/8" TYPE 'X' WATER RESISTANT GYP. BD. FROM 3'-0" A.F.F. TO 6" ABOVE ACOUSTICAL CEILING (AT RESTROOMS, TO BOTTOM OF GYP. BD. CEILING).
- 6" 25 GA. METAL STUDS AT 16" O.C. INTERIOR FACE WITH 5/8" TYPE 'X' GYP. BD. FROM FLOOR TO ROOF DECK.
- LOW WALL - 3 5/8" 25 GA. METAL STUDS AT 16" O.C. WITH 5/8" TYPE 'X' GYP. BD. ON EACH SIDE. TOP OF OAK WALL CAP AT 5'-0".
- LOW WALL - 3 5/8" 25 GA. METAL STUDS AT 16" O.C. WITH 5/8" TYPE 'X' GYP. BD. ON CUSTOMERSIDE AND 5/8" CEMENT BOARD FROM FLOOR TO 3'-0" A.F.F. AND 5/8" TYPE 'X' WATER RESISTANT GYP. BD. ABOVE. TOP OF OAK WALL CAP AT 4'-4".
- 6" 25 GA. METAL STUDS AT 16" O.C. FINISH INTERIOR FACE WITH 1 LAYER OF 5/8" TYPE 'X' GYP. BD. FROM FLOOR TO STRUCTURE ABOVE AND SEAL AIR TIGHT.
- 11A. 1-HR. RATED WALL: 3 5/8" 25 GA. METAL STUDS AT 16" O.C. TO STRUCTURE ABOVE WITH 5/8" TYPE 'X' GYP. BD. ON UTILITY ROOM SIDE FROM FLOOR TO STRUCTURE ABOVE (AT OFFICE, PLACE 5/8" MARINE GR. PLYWOOD OVER STUDS BEFORE GYP. BD.) SEAL AIR TIGHT. INSTALL DENS-SHIELD FIREGUARD FROM FLOOR TO 3'-0" MIN. A.F.F. AND 5/8" WATER RESISTANT TYPE 'X' GYP. BD. FROM 3'-0" TO STRUCTURE ABOVE. SEAL AIR TIGHT.
- 6" 25 GA. METAL STUDS AT 16" O.C. WITH 5/8" CEMENT BOARD FROM FLOOR TO 18" A.F.F. AND 5/8" TYPE 'X' WATER RESISTANT GYP. BD. FROM 18" A.F.F. TO ROOF DECK. SEE DETAIL 12/A4.3 - SIMILAR.
- 3 5/8" 25 GA. METAL STUDS AT 16" O.C. FROM FLOOR TO BOTTOM OF COUNTER WITH 5/8" TYPE 'X' GYP. BD. TO BOTTOM OF COUNTER ON ONE SIDE AND 5/8" CEMENT BOARD ON THE SERVING SIDE (SEE COUNTER SECTION). NOTE: TOP OF FINISHED WALL TO BE 2'-10" MAX.
- LOW WALL WITH 1X WOOD CAP. TOP AT 4'-4" A.F.F., 3 5/8" 25 GA. METAL STUDS AT 16" O.C. WITH 5/8" TYPE 'X' GYP. BD. ON CUSTOMER SIDE AND 5/8" CEMENT BOARD FROM FLOOR TO 18" AND 5/8" TYPE 'X' GYP. BD. ABOVE ON SERVING SIDE.
- LOW WALL WITH 1X WOOD CAP. TOP AT 4'-4" A.F.F., TO BE 6" 25 GA. METAL STUDS AT 16" O.C. WITH 5/8" TYPE 'X' GYP. BD. ON EACH SIDE.
- 3 5/8" 25 GA. METAL STUDS AT 16" O.C. WITH 5/8" CEMENT BOARD FROM FLOOR TO 3'-0" A.F.F. AND 5/8" TYPE 'X' WATER RESISTANT GYP. BD. ABOVE 3'-0" A.F.F. FINISH ALL WALL FACES WITH TILE.
- INSTALL SOFFIT WALL FROM 7'-2" WALL TO 3 5/8" 25 GA. METAL STUDS AT 16" O.C. FROM DESIGNATED HEIGHT TO STRUCTURE ABOVE WITH 5/8" TYPE 'X' GYP. BD. TO ROOF DECK ABOVE ON CUSTOMER SIDE AND 5/8" TYPE 'X' GYP. BD. TO 6" ABOVE CEILING AT "SHAKE/TAKE-OUT" SIDE. BRACE WALL WITH DIAGONAL 2X4'S AT 6'-0" O.C.

PARTITION NOTES

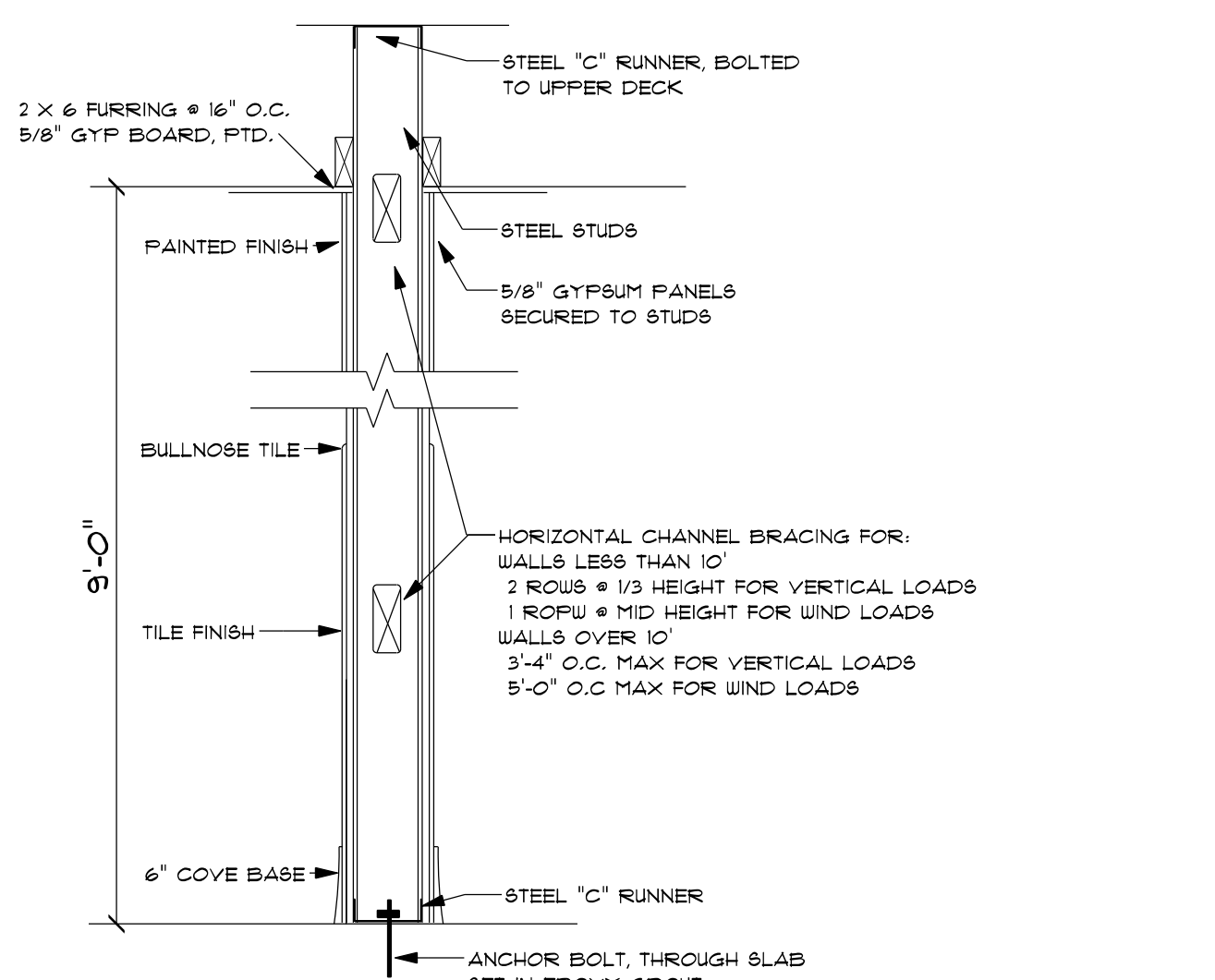
- 3" SOUND ATTENUATION BLANKETS FROM FLOOR TO 6" ABOVE CEILING (AT OFFICE, RESTROOMS)
- PROVIDE CONCEALED SUPPORT BLOCKING AT ALL TOILET ACCESSORIES, AND WALL MOUNTED LIGHT FIXTURES, FOOD SERVICE EQUIPMENT, AND SIMILAR LOCATIONS AS REQUIRED FOR SOUND, STABLE INSTALLATION. FIELD VERIFY ALL LOCATIONS.
- AT ALL PARTITIONS THAT RUN FROM SLAB TO ROOF DECK, PROVIDE SLIP CONNECTION AT DECK TO ALLOW FOR DEFLECTION MOVEMENT IN ROOF STRUCTURE. REFER TO STRUCTURAL DRAWINGS FOR REQ'D BRACING & CONNECTIONS.
- GC TO PROVIDE FIRESTOPPING AND FIRESAFING AS REQ'D AT ALL FLOOR, ROOF, AND WALL PENETRATIONS AS REQUIRED BY CODE AUTHORITIES.
- PROVIDE 5/8" FIRE TREATED MARINE GRADE PLYWOOD ON ALL INTERIOR WALLS (KITCHEN/UTILITY ROOM FACE) AROUND OFFICE.



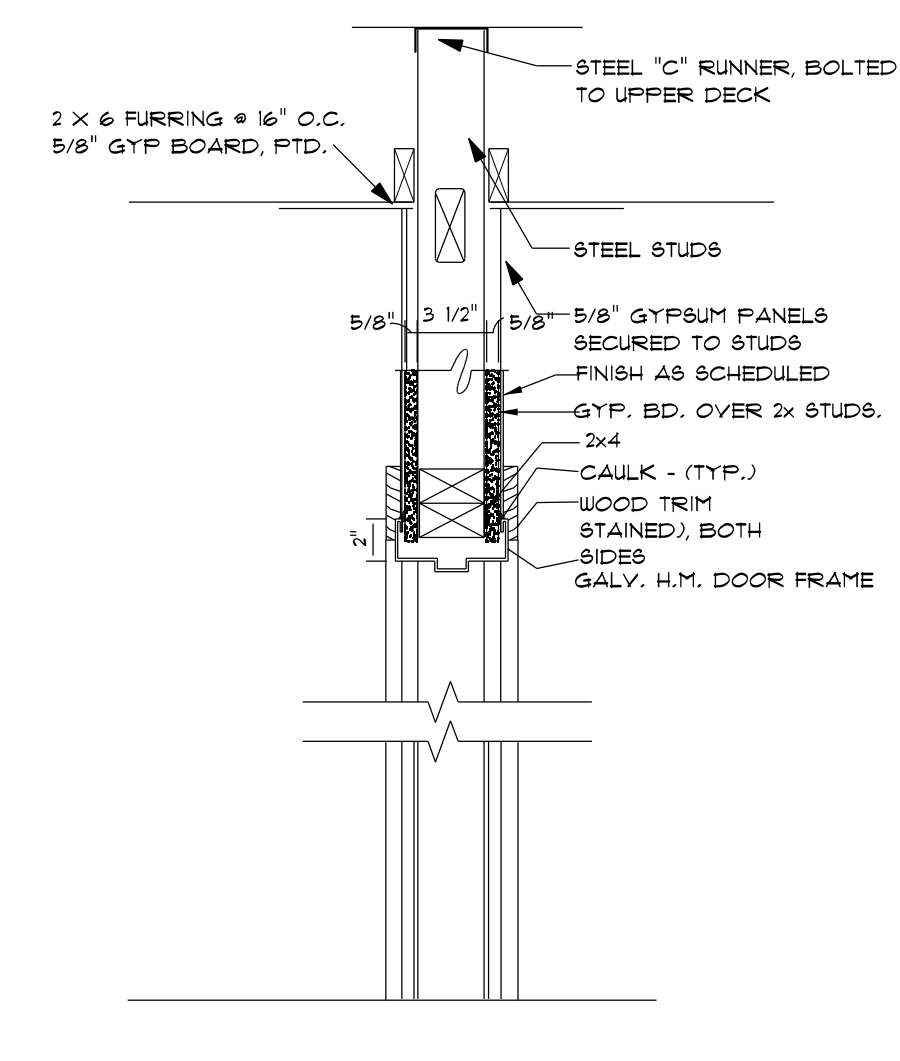
1. TYPICAL STEEL STUD WALL SECTION



2. TYPICAL KITCHEN STEEL STUD WALL SECTION



3. TYPICAL RESTROOM STEEL STUD WALL SECTION



4. TYPICAL RESTROOM WALL SECTION THROUGH DOOR

(P) 713.680.1333
(F) 713.680.1334

3301 Edloe Suite 100
Houston TX 77027



DO NOT SCALE DRAWINGS
CONTRACTOR TO VERIFY ALL
EXISTING CONDITIONS AND
DIMENSIONS-NOTIFY DESIGNER
OF ANY DISCREPANCIES PRIOR
TO BEGINNING CONSTRUCTION.

VERSION ID	DATE
PERMIT REVIEW	09/21/10

PROJECT NUMBER
FCF5625
SCALE
AS NOTED
SHEET ID
METAL STUD FRAMING
SHEET NUMBER
A101
ISSUE DATE - 5-26-2010
PRINT DATE - 9-21-2010

THIS PLAN IS COPYRIGHT PROTECTED AND THE SOLE PROPERTY OF GENE GILES. ANY UNAUTHORIZED COPIES OR DISTRIBUTION IS A VIOLATION OF FEDERAL COPYRIGHT LAW AND SUBJECT TO PROSECUTION UNDER THE GUIDELINES OF THE FEDERAL COPYRIGHT ACT.