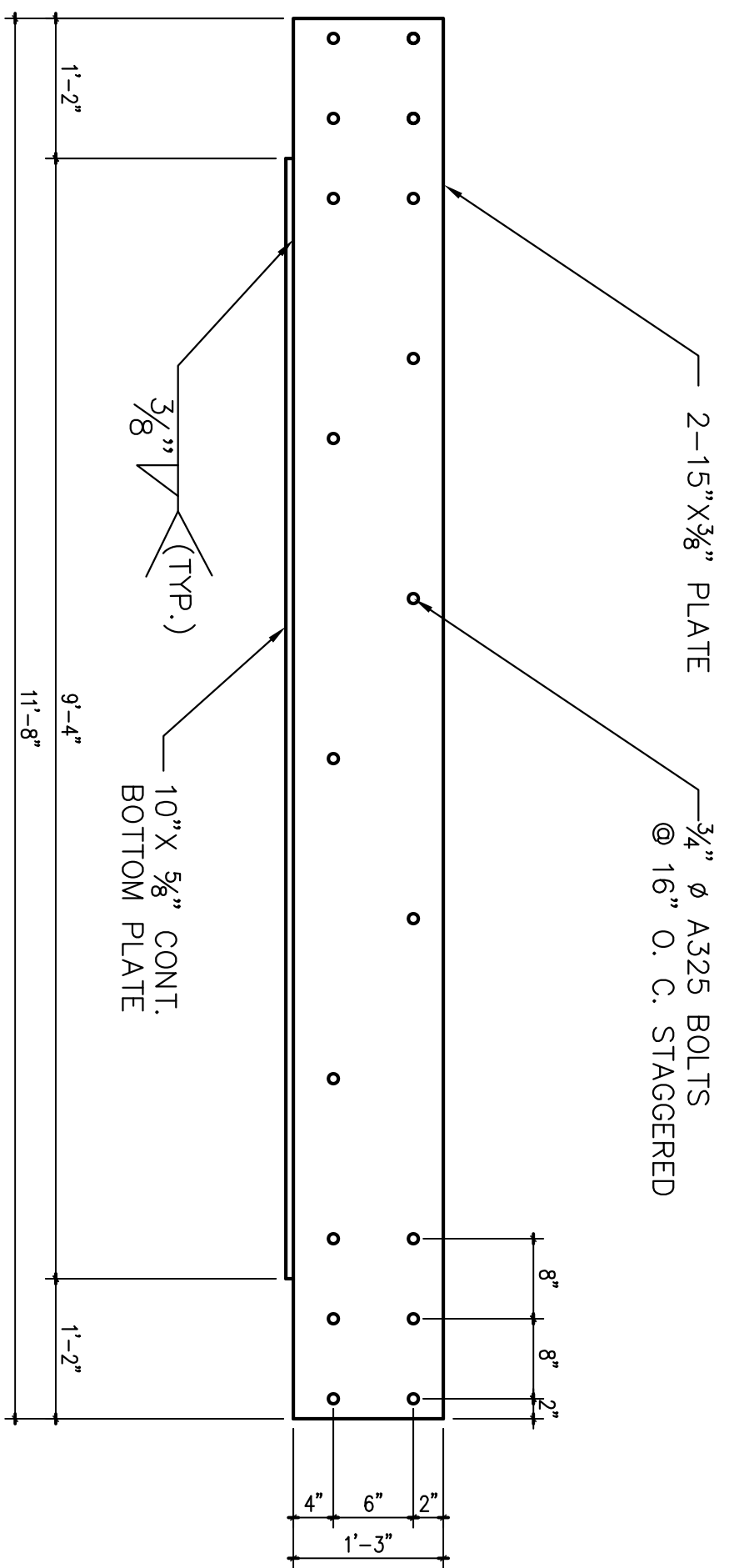
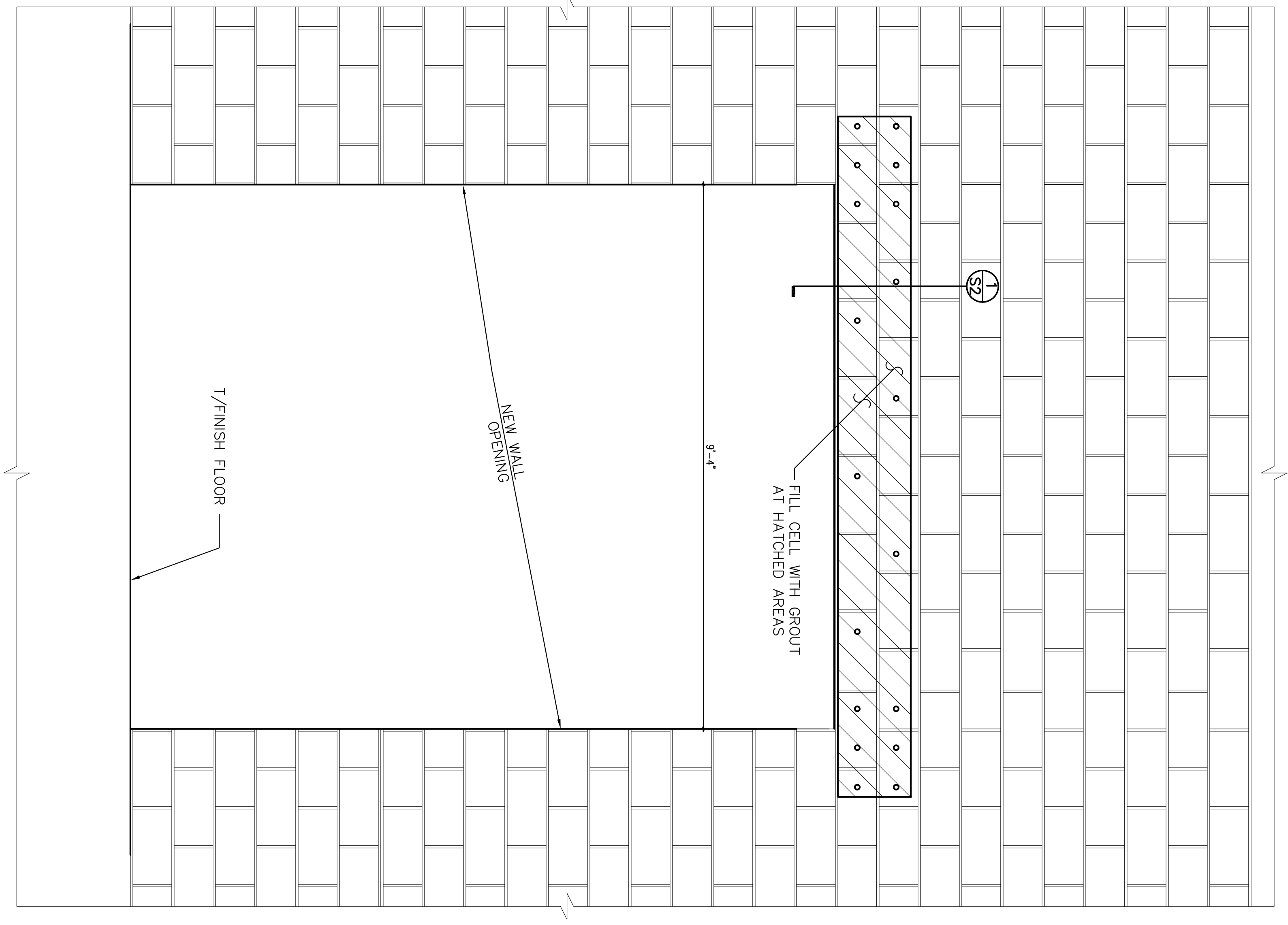
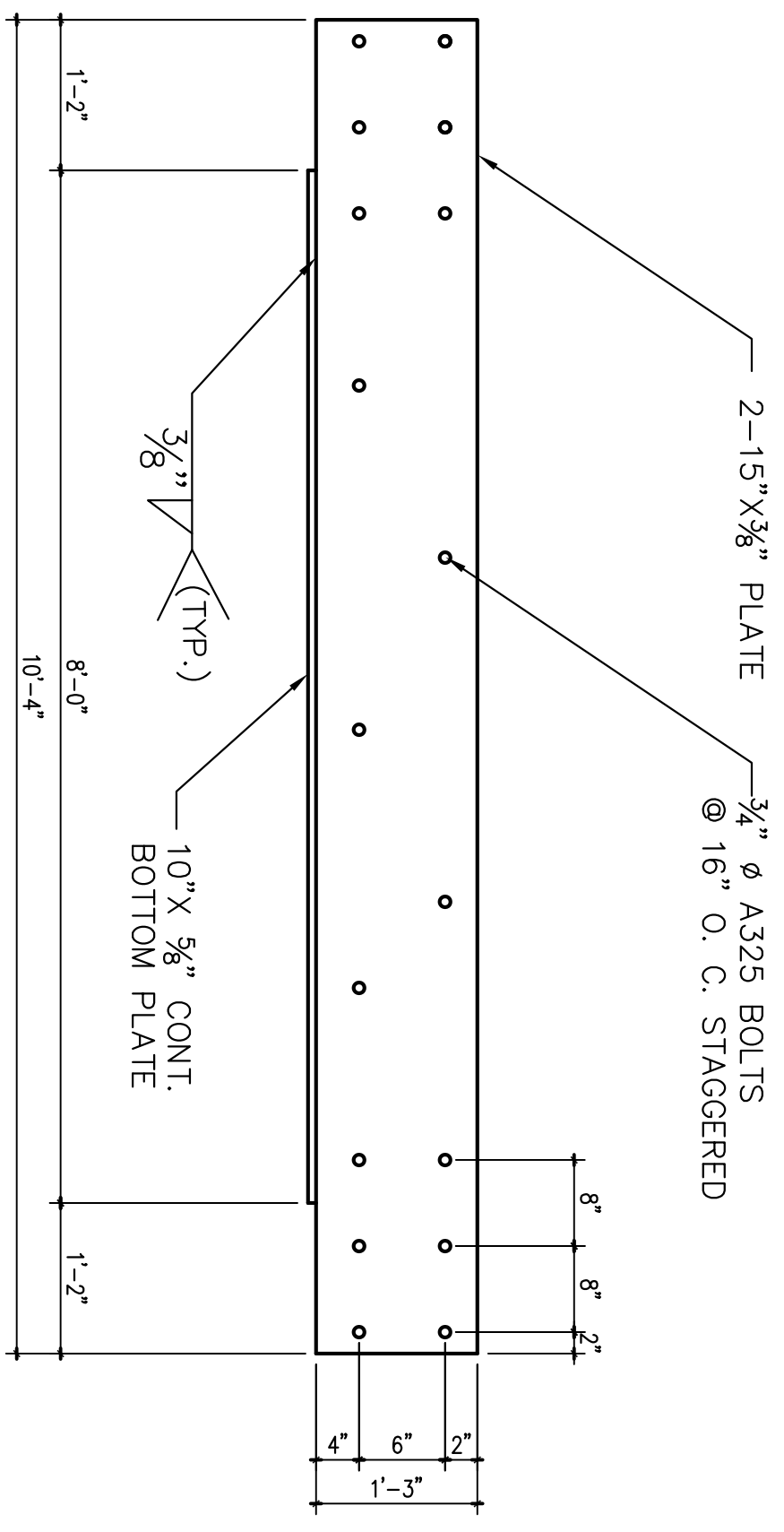


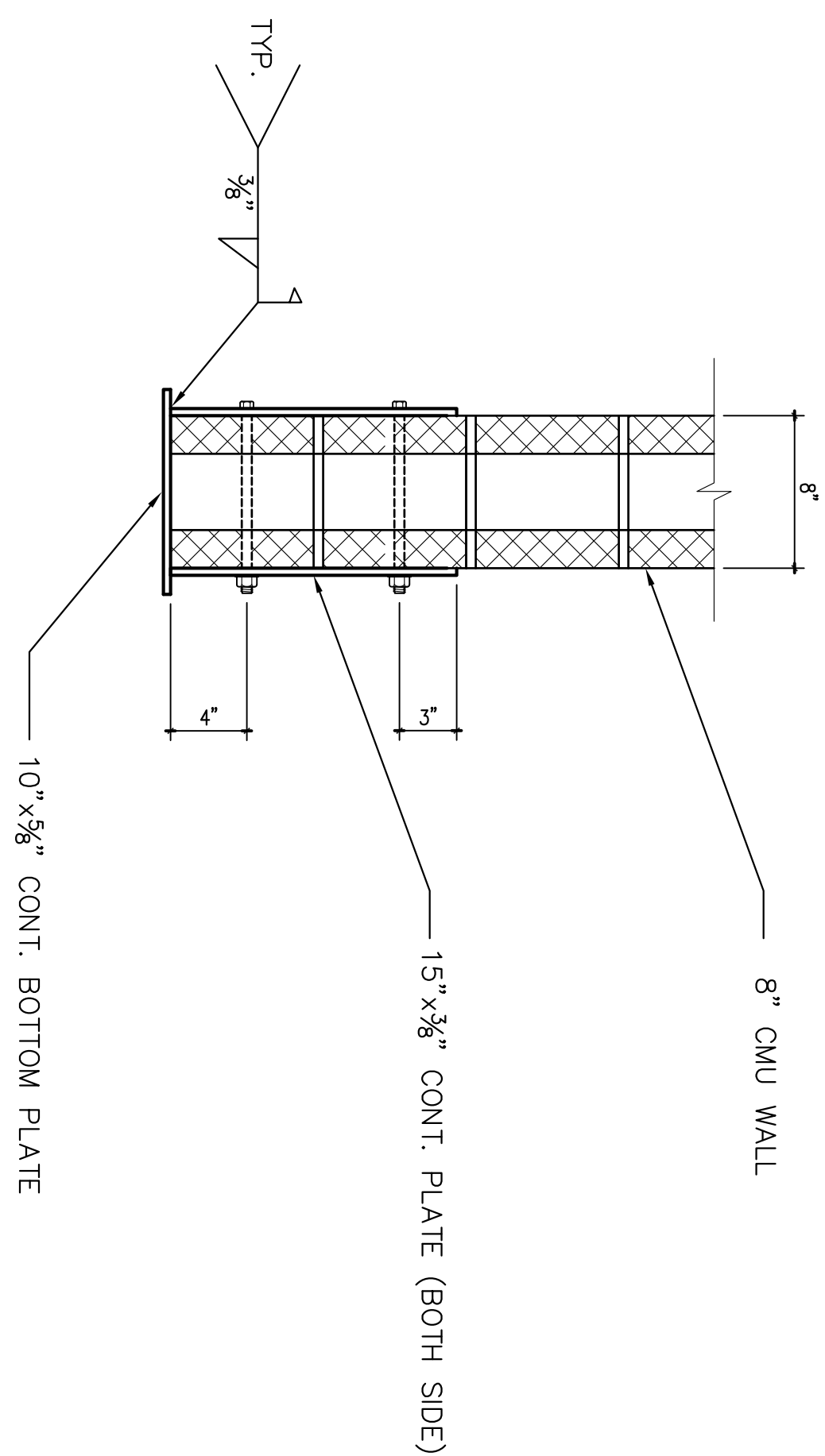
**OPENING AT CMU WALL ELEVATION**



**ELEVATION A**



**ELEVATION B**



**SECTION 1**

**MATERIAL SPECIFICATIONS:**  
 CMU: NORMAL WEIGHT, ASTM C90, GRADE N, TYPE 1  
 MINIMUM 28-DAY COMPRESSIVE STRENGTH = 2,500 PSI  
 MORTAR: TYPE "M", Fm = 1,800 PSI @ 28 DAYS  
 GROUT: 2,500 PSI @ 28 DAYS  
 GROUT SOLID ALL CELLS

- GENERAL NOTES: STRUCTURAL AND MISC. STEEL**
- CONFORM TO THE FOLLOWING MATERIAL SPECIFICATIONS:  
 STRUCTURAL & MISC. SHAPES: ASTM A-36  
 PIPE COLUMNS: ASTM A-53-B  
 TUBE COLUMNS: ASTM A-500-B
  - ALL DETAILING SHALL BE IN CONFORMANCE WITH THE STANDARDS OF THE AMERICAN INSTITUTE OF STEEL CONSTRUCTION (AISC).
  - UNLESS NOTED OTHERWISE, PROVIDE FRAMED BEAM CONNECTIONS IN ACCORDANCE WITH PART 4, AISC MANUAL - 3/4" ASTM A-307 BOLTS. DESIGN FOR SHEARS IN TABLES FOR ALLOWABLE LOADS ON BEAMS, PART 2.
  - FIELD CONNECTIONS SHALL BE EQUIVALENT TO STANDARD BOLTED CONNECTIONS USING 3/4" ASTM A-307 BOLTS UNLESS OTHERWISE SHOWN. IF CONNECTION BOLTS ARE IN CONTACT WITH CONCRETE, THEY SHALL BE WELDED TO THE CONCRETE. SEE DETAILS.
  - WELDING SHALL CONFORM TO THE CODE FOR WELDING IN BUILDING CONSTRUCTION BY THE AMERICAN WELDING SOCIETY (AWS) AND SHALL BE NOTED ON ALL CONNECTION DRAWINGS. THE AMERICAN WELDING SOCIETY (AWS) WELDING ELECTRODES SHALL CONFORM TO AWS A51 OR A5.5 E70XX.
  - ALL WELDING SHALL BE PERFORMED BY CERTIFIED WELDERS.
  - ANCHOR BOLTS SHALL CONFORM TO ASTM A-307 FOR HEADS, A8 AND A-36 FOR UNHEADED AND HOOKED A8, AND SHALL BE SET USING ROBO TEMPLATES.
  - PROVIDE TEMPORARY BRACING & SHORING FOR ALL STEEL FRAMING AS REQUIRED TO MAINTAIN PLUMB AND SQUARE DURING CONSTRUCTION.
  - NOTE THAT STEEL FRAMING MEMBERS MAY NOT BE STABLE DURING CONSTRUCTION UNTIL PERMANENTLY CONNECTED WITHIN THE OVERALL STRUCTURE.
  - IT IS THE RESPONSIBILITY OF THE CONTRACTOR TO VERIFY ALL DIMENSION, ELEVATION AND RENEW THESE GRAMMERS BEFORE FABRICATION OR ORDERING MATERIALS.

**Y-SQUARE ENGINEERING, INC.**  
 8582 KATY FREEWAY, SUITE 220  
 HOUSTON, TEXAS 77024  
 FIRM REGISTRATION # F-11151

TEL: 713-688-5501  
 FAX: 713-688-5523  
 E-MAIL: y-square@y-square.net

ISSUE HISTORY			REVISIONS	
DATE	ISSUED FOR	DATE	DESCRIPTION	
02/21/11	PERMIT			
	CONSTRUCTION			

3/4 INCHES = 1 FEET

GRAPHIC SCALE

**DAMICO'S RESTAURANT**  
 2802 WHITE OAKS DRIVE, SUITE 500  
 HOUSTON, TEXAS 77007

DRAWN BY: DP  
 CHECKED BY: YY

PROJ. NO.: Y11-1000.001

SHT.: S4.01 OF: 4