

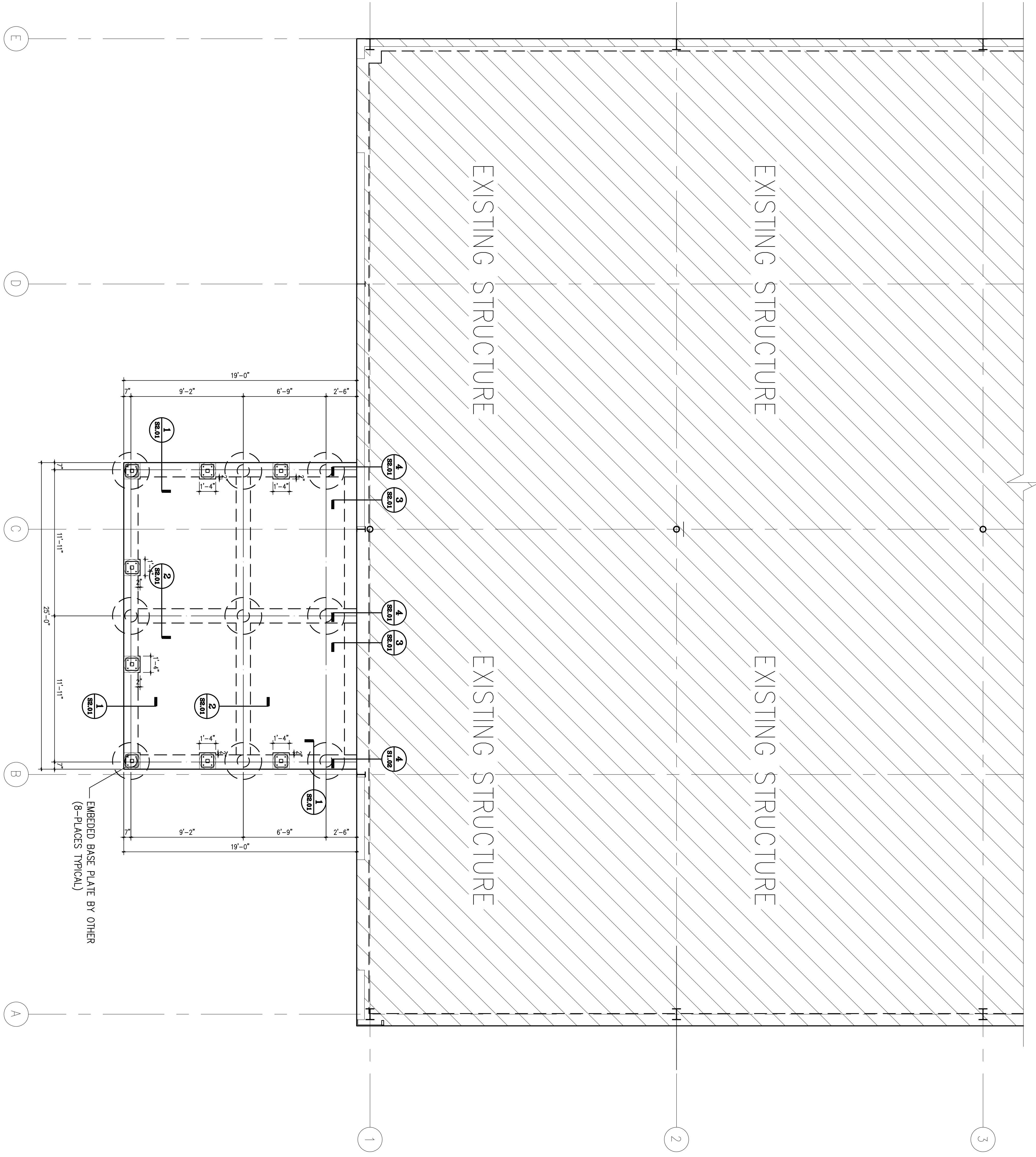
GENERAL NOTES FOR FOUNDATION SYSTEM

- CONCRETE:**
1. ALL CONCRETE WORK SHALL BE IN ACCORDANCE WITH THE "ACI STANDARD BUILDING CODE REQUIREMENT FOR STRUCTURAL CONCRETE (ACI 318-99)".
 2. NORMAL WEIGHT CONCRETE (W = 145 PCF) WITH MINIMUM 28 DAY COMPRESSIVE STRENGTH (F_c) = 3000 PSI.
 3. CONCRETE SHOULD BE PLACED IN THE FOOTING EXCAVATIONS AS SOON AS POSSIBLE BUT NO LATER THAN THREE HOURS AFTER EXCAVATION TO MINIMIZE THE POSSIBILITY OF CAVING OF DRILLED PIERS.
 4. CLEAN TOPS OF PIERS AND BOTTOM OF GRADE BEAM TRENCHES THOROUGHLY PRIOR TO PLACEMENT OF CONCRETE IN THE GRADE BEAMS.
 5. SEE ARCHITECTURAL DRAWINGS FOR FLOOR ELEVATIONS, SLOPES AND THE LOCATION OF FLOOR DEPRESSIONS.

- REINFORCING STEEL:**
1. BARS - CONFORM TO ASTM A-615-GRADE 60, DOWELS AND STIRRUPS - GRADE 40.
 2. WELDED WIRE FABRIC - CONFORM TO ASTM A-185 OR A-409, FURNISHED IN FLAT SHEETS AND MUST BE SUPPORTED ON CHAIRS SPACED 4'-0" O.C. MAXIMUM EACH WAY.
 3. DETAILING - CONFORM TO ACI DETAILING MANUAL, 315-80.
- FINISHES:**
- REINFORCING STEEL COVERAGE: BOTTOM AND SIDES
 GRADE BEAMS: 1 1/2" TOP, 3" BOTTOM, 2" SIDES (3" SIDES IF EARTH FORMED)
 SLABS ON GRADE: 1 1/4" TOP
 WALLS: 1 1/2"
4. LAP CONTINUOUS REINFORCING STEEL, 36 BAR DIAMETERS.
 5. SLAB REINFORCEMENT SHALL BE SUPPORTED ON CHAIRS, @ 4'-0" MAXIMUM SQUARE GRID.
 6. GRADE BEAM BOTTOM REINFORCEMENT SHALL BE SUPPORTED ON CHAIRS @ 6'-0" MAXIMUM SPACING.

- PLAN NOTES**
1. ALL DRILLED PIERS ARE 12/26 (U.O.N.)
 2. □ DESIGNATES STEEL COLUMNS.
 3. RE: SHEET S2.01 FOR FOUNDATION TYPICAL DETAILS.
 4. COORDINATE ALL DIMENSIONS SHOWN ON PLAN WITH ARCHITECTURAL DRAWINGS.

- GENERAL NOTES: COORDINATION W/ ARCH. DWGS.**
1. CONTRACTOR SHALL REVIEW ARCHITECTURAL AND STRUCTURAL DRAWINGS JOINTLY PRIOR TO CONSTRUCTION. ANY DISCREPANCIES OR CONFLICTS BETWEEN ARCHITECTURAL AND STRUCTURAL DRAWINGS OR INCONSISTENCIES SHALL BE BROUGHT TO THE ATTENTION OF BOTH ARCHITECT AND ENGINEER PRIOR TO PROCEEDING WITH CONSTRUCTION WORK. IN THE EVENT OF ANY CONFLICTS OR INCONSISTENCIES IN THE PLANS, Y-SQUARE ENGINEERING, INC. SHOULD BE CONTACTED IMMEDIATELY. IF NO SUCH CONTACT IS MADE PRIOR TO CONSTRUCTION, THEN THE CONTRACTOR AND SUBCONTRACTORS, THEIR AGENTS AND EMPLOYEES, ASSUME ALL LIABILITY ASSOCIATED WITH SUCH CONFLICTS OR INCONSISTENCIES.
 2. THE FOLLOWING ITEMS, IN PARTICULAR, HAVE TO BE CLOSELY COORDINATED BETWEEN ARCHITECTURAL AND STRUCTURAL DRAWINGS:
 - A. ALL DIMENSIONS, ELEVATIONS, SLOPES, AND LOCATION AND DIMENSIONS OF ANY RECESSES.
 - B. SLAB AND FLOOR FINISH ELEVATIONS ON SHOWERS, ELEVATIONS, FLOORING MATERIALS, ETC.
 - C. CHAIRS AND WIREEN LEADS.
 - D. CEILING HEIGHTS AND CEILING CONDITIONS.
 - E. ROOF GEOMETRY AND SLOPES.



FOUNDATION PLAN

1/4 INCHES = 1 FEET	ISSUE HISTORY			REVISIONS	
	DATE	ISSUED FOR	DATE	DESCRIPTION	
	02/21/11	CLIENT REVIEW			
		PERMIT			
GRAPHIC SCALE		CONSTRUCTION			

DAMICO'S RESTAURANT		
2802 WHITE OAKS DRIVE, SUITE 500 HOUSTON, TEXAS 77007		
DRAWN BY: DP		SHT.: S1.01 OF: 4
CHECKED BY: YY	PROJ. NO.: Y11-1000.001	