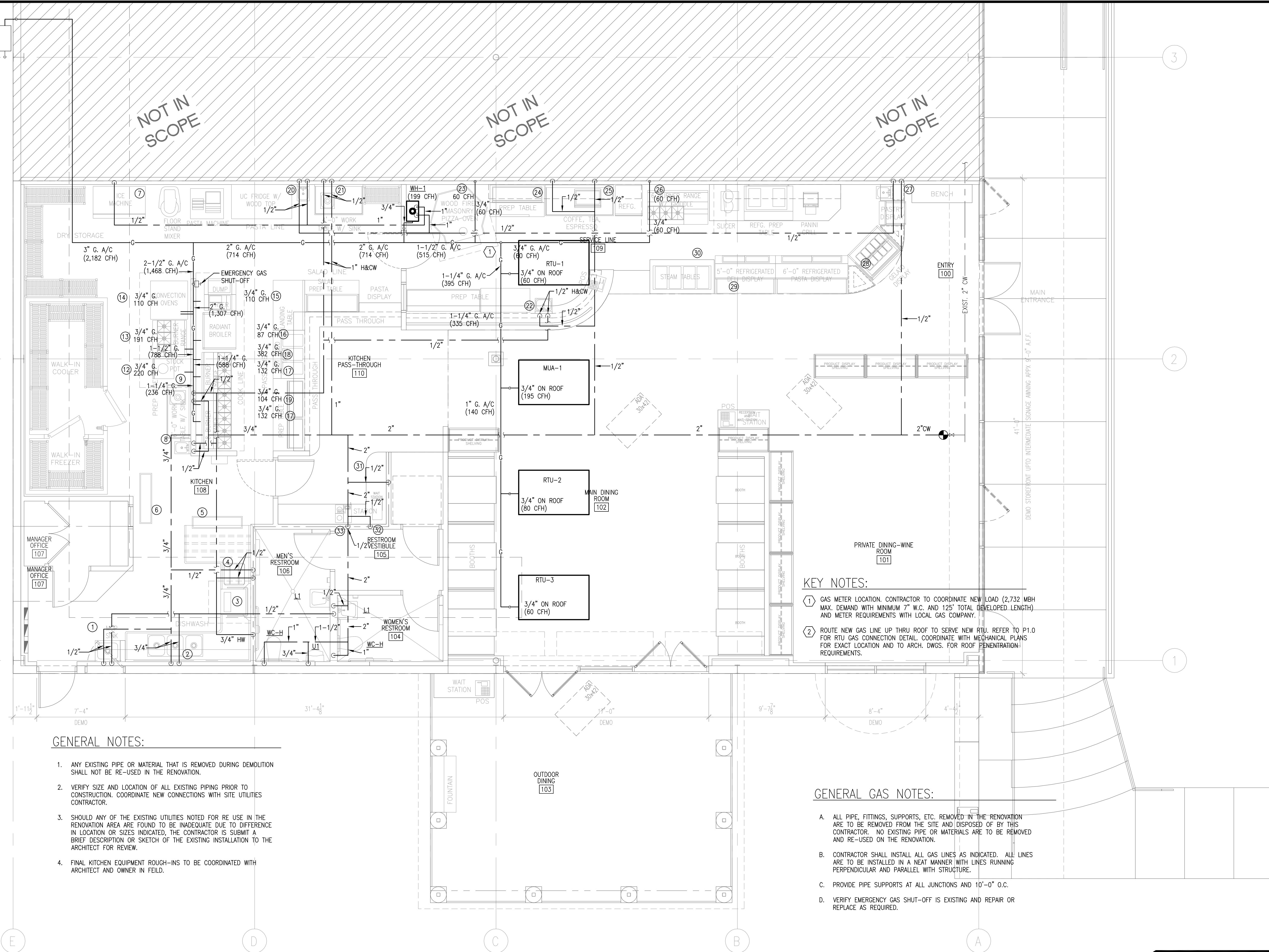


GAS METER-1,987 CFH  
 PER 2006 UPC TABLE 12-8 TDL=100'  
 NOTE:  
 GAS PRESSURE 0.5", LESS THAN 2 PSI



**GENERAL NOTES:**

1. ANY EXISTING PIPE OR MATERIAL THAT IS REMOVED DURING DEMOLITION SHALL NOT BE RE-USED IN THE RENOVATION.
2. VERIFY SIZE AND LOCATION OF ALL EXISTING PIPING PRIOR TO CONSTRUCTION. COORDINATE NEW CONNECTIONS WITH SITE UTILITIES CONTRACTOR.
3. SHOULD ANY OF THE EXISTING UTILITIES NOTED FOR RE USE IN THE RENOVATION AREA ARE FOUND TO BE INADEQUATE DUE TO DIFFERENCE IN LOCATION OR SIZES INDICATED, THE CONTRACTOR IS SUBMIT A BRIEF DESCRIPTION OR SKETCH OF THE EXISTING INSTALLATION TO THE ARCHITECT FOR REVIEW.
4. FINAL KITCHEN EQUIPMENT ROUGH-INS TO BE COORDINATED WITH ARCHITECT AND OWNER IN FIELD.

**KEY NOTES:**

- ① GAS METER LOCATION. CONTRACTOR TO COORDINATE NEW LOAD (2,732 MBH MAX. DEMAND WITH MINIMUM 7" W.C. AND 125' TOTAL DEVELOPED LENGTH) AND METER REQUIREMENTS WITH LOCAL GAS COMPANY.
- ② ROUTE NEW GAS LINE UP THRU ROOF TO SERVE NEW RTU. REFER TO P1.0 FOR RTU GAS CONNECTION DETAIL. COORDINATE WITH MECHANICAL PLANS FOR EXACT LOCATION AND TO ARCH. DWGS. FOR ROOF PENETRATION REQUIREMENTS.

**GENERAL GAS NOTES:**

- A. ALL PIPE, FITTINGS, SUPPORTS, ETC. REMOVED IN THE RENOVATION ARE TO BE REMOVED FROM THE SITE AND DISPOSED OF BY THIS CONTRACTOR. NO EXISTING PIPE OR MATERIALS ARE TO BE REMOVED AND RE-USED ON THE RENOVATION.
- B. CONTRACTOR SHALL INSTALL ALL GAS LINES AS INDICATED. ALL LINES ARE TO BE INSTALLED IN A NEAT MANNER WITH LINES RUNNING PERPENDICULAR AND PARALLEL WITH STRUCTURE.
- C. PROVIDE PIPE SUPPORTS AT ALL JUNCTIONS AND 10'-0" O.C.
- D. VERIFY EMERGENCY GAS SHUT-OFF IS EXISTING AND REPAIR OR REPLACE AS REQUIRED.

1'-11 1/2" DEMO  
 7'-4" DEMO  
 31'-4 1/8"  
 9'-7 1/8" DEMO  
 8'-4" DEMO  
 4'-4 1/2" DEMO

**1 FLOOR PLAN WATER AND GAS**  
 SCALE: 1/4" = 1'-0"

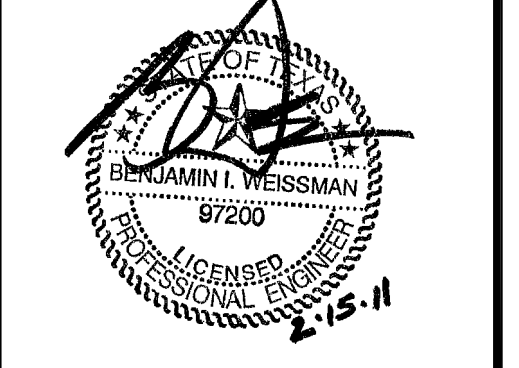
**JSE** Jordan & Skala Engineers  
 11231 Richmond Ave., Suite 0104  
 Houston, TX 77082  
 V: (281) 617-3200 F: (281) 617-3207  
 Project Number - 106-0634 Texas Firm Registration # F-4990  
 Drawn By: JSE Checked By: JSE

**CISNEROS DESIGN STUDIO, ARCHITECTS LLC**  
 4621 Montrose Blvd. Suite B220 Houston, Texas 77006  
 (PH) 713-520-7745 (FAX) 713-520-8894  
 COPYRIGHT 2011  
 CISNEROS DESIGN STUDIO, ARCHITECTS, LLC  
 No warranty or specifications are made on behalf of the Architect. They are not to be used on other projects or in connection with this project except by agreement in writing and with appropriate compensation to the Architect. Contractor is responsible for obtaining all necessary permits and for safety precautions and program in connection with the project.

**DAMICO'S RESTAURANT**  
 2802 WHITE OAK, SUITE 500  
 HOUSTON, TX 77007

ARCHITECT:

ENGINEER:



REVISIONS:

DATE ISSUED: 15 FEB. 2011

SHEET: FLOOR PLAN

**P-2.1**