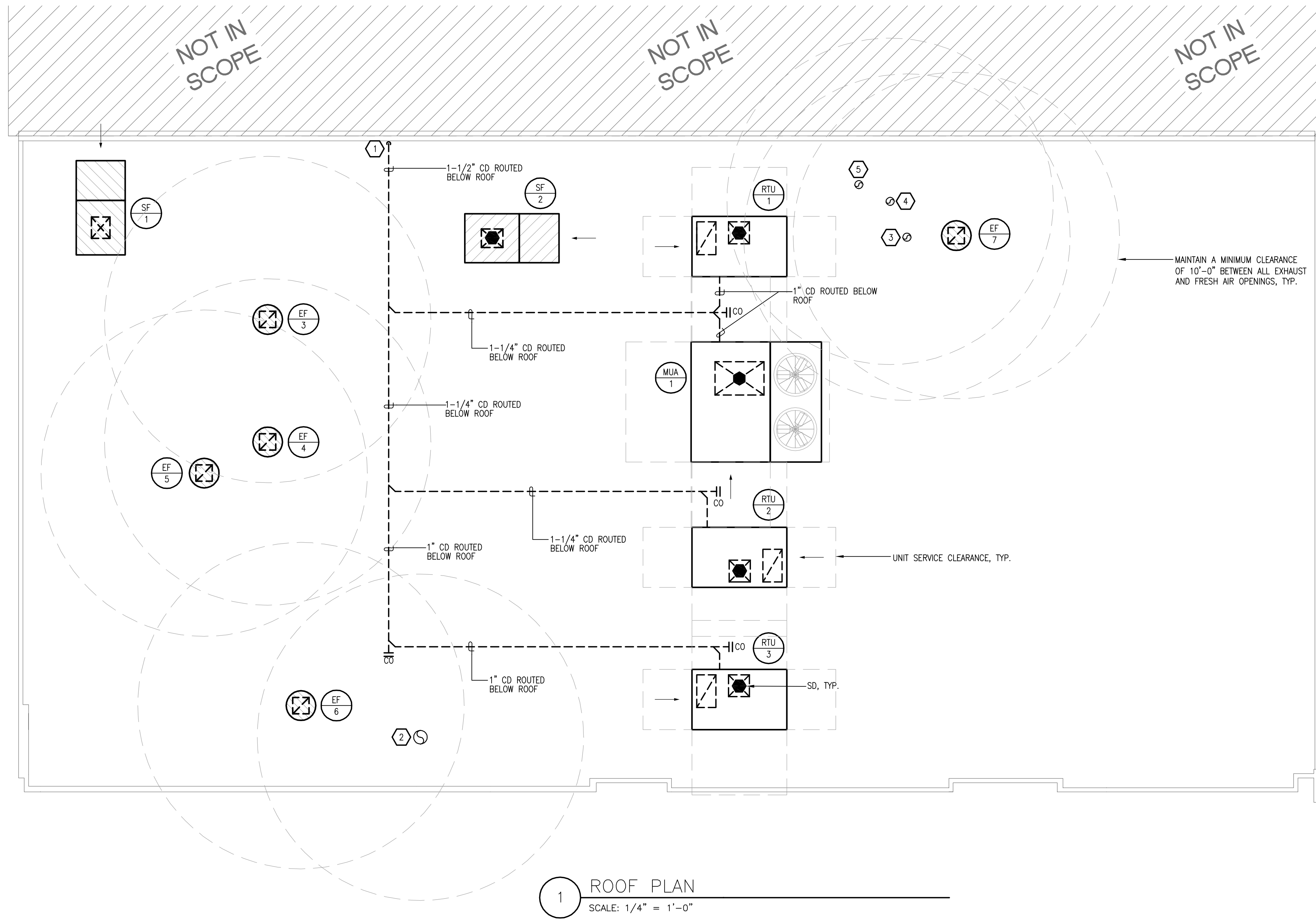


- KEYED NOTES (APPLIES TO THIS SHEET ONLY)**
- 1 1-1/2" CD ROUTED DOWN IN WALL TO FLOOR DRAIN. REFERENCE PLUMBING PLANS FOR EXACT DRAIN LOCATION.
 - 2 10"Ø EXHAUST DUCT ROUTED DOWN TO EF-1 AND EF-2.
 - 3 6"Ø FLUE ROUTED DOWN TO OVEN HOOD.
 - 4 4"Ø FLUE ROUTED DOWN TO WATER HEATER.
 - 5 4"Ø COMBUSTION AIR DUCT ROUTED DOWN TO WATER HEATER.

- COORDINATION NOTES (APPLIES TO THIS SHEET ONLY)**
- CONTRACTOR SHALL VISIT THE SITE PRIOR TO BIDDING AND START OF CONSTRUCTION AND SHALL NOTIFY THE ARCHITECT OR ENGINEER OF ANY CONFLICTS OR DISCREPANCIES WITH THE DRAWINGS. ANY REQUIRED MODIFICATIONS NOT IDENTIFIED UNTIL START OF CONSTRUCTION SHALL BE MADE AT NO ADDITIONAL COST TO THE OWNER.
 - CONTRACTOR SHALL SEAL ALL ROOF PENETRATIONS AIR AND WATER TIGHT.

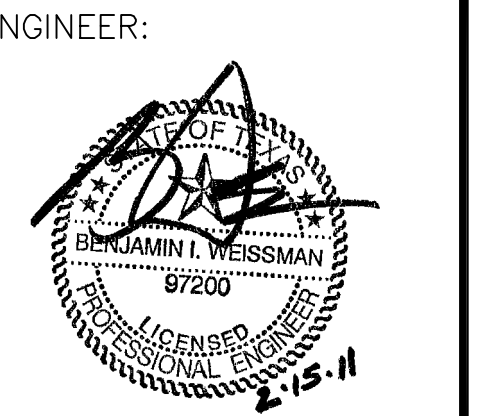
- KITCHEN EQUIPMENT LIST (APPLIES TO THIS SHEET ONLY)**
- KITCHEN HOOD SUPPLY FAN, SF-1
REFERENCE SUPPLY FAN (SF-1) ON SHEET M-1.0 IN THE FAN SCHEDULE FOR MORE INFORMATION.
 - KITCHEN HOOD SUPPLY FAN, SF-2
REFERENCE SUPPLY FAN (SF-2) ON SHEET M-1.0 IN THE FAN SCHEDULE FOR MORE INFORMATION.
 - COOKING HOOD EXHAUST FAN, EF-3
REFERENCE EXHAUST FAN (EF-3) ON SHEET M-1.0 IN THE FAN SCHEDULE FOR MORE INFORMATION.
 - COOKING HOOD EXHAUST FAN, EF-4
REFERENCE EXHAUST FAN (EF-4) ON SHEET M-1.0 IN THE FAN SCHEDULE FOR MORE INFORMATION.
 - COOKING HOOD EXHAUST FAN, EF-5
REFERENCE EXHAUST FAN (EF-5) ON SHEET M-1.0 IN THE FAN SCHEDULE FOR MORE INFORMATION.
 - DISHWASHER HOOD EXHAUST FAN, EF-6
REFERENCE EXHAUST FAN (EF-6) ON SHEET M-1.0 IN THE FAN SCHEDULE FOR MORE INFORMATION.
 - COOKING HOOD EXHAUST FAN, EF-7
REFERENCE EXHAUST FAN (EF-7) ON SHEET M-1.0 IN THE FAN SCHEDULE FOR MORE INFORMATION.



**CISNEROS DESIGN STUDIO,
ARCHITECTS LLC**
4621 Montrose Blvd. Suite B220 Houston, Texas 77006
(PH) 713-520-7745 (FAX) 713-520-8894
COPYRIGHT 2011
CISNEROS DESIGN STUDIO ARCHITECTS LLC
The drawings and specifications are instruments of service and shall remain the property of the Architect. They are not to be used on other projects or in any way without the written consent of the Architect. The Architect is not responsible for construction means, methods, techniques, sequences or procedures, or for safety precautions and programs in connection with the project.

DAMICO'S RESTAURANT
2802 WHITE OAK, SUITE 500
HOUSTON, TX 77007

ARCHITECT:



ENGINEER:

REVISIONS:

DATE ISSUED: 15 FEB. 2011

SHEET
ROOF PLAN
M-3.0

JSE Jordan & Skala Engineers
11231 Richmond Ave., Suite 0101
Houston, TX 77082
V: (281) 617-3200 F: (281) 617-3207
Project Number - 106-0634 Texas Firm Registration # F-4990
Drawn By: JSE Checked By: JSE