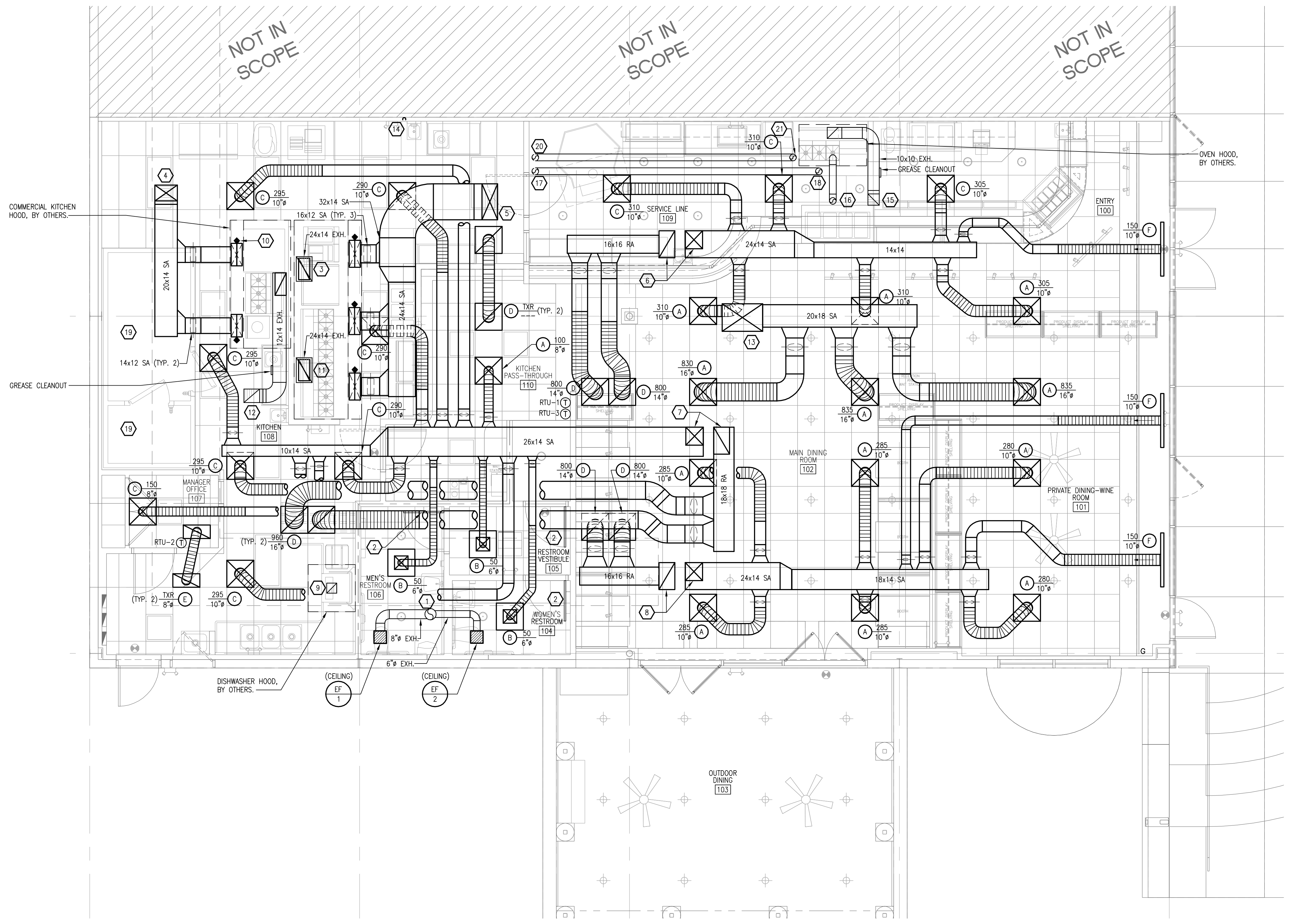


KEYED NOTES (APPLIES TO THIS SHEET ONLY)

1. 10" EXHAUST DUCT ROUTED UP TO ROOF. PROVIDE CAP, COLLAR AND FLASH.
2. UNDERCUT DOOR BY 1".
3. 24x14 GREASE EXHAUST DUCT UP FROM HOOD THRU ROOF TO EF-3. DUCT TO BE 16-GAUGE BLACK STEEL AND WELDED AIR & LIQUID TIGHT. GREASE EXHAUST DUCT SHALL BE SLOPED TOWARD HOOD AND ENCASED IN FIRE RATED ENCLOSURE OR APPROVED FIRE WRAP PER LOCAL CODE. PROVIDE TRANSITION TO HOOD CONNECTION SIZE.
4. 20x14 SUPPLY DUCT UP TO SF-1. DUCT SHALL BE SLOPED TOWARD HOOD. PROVIDE TRANSITION TO FULL SIZE UNIT OPENING.
5. 32x14 SUPPLY DUCT UP TO SF-2. DUCT SHALL BE SLOPED TOWARD HOOD. PROVIDE TRANSITION TO FULL SIZE UNIT OPENING.
6. SUPPLY AND RETURN DUCTS ROUTED UP TO RTU-1. TRANSITION TO UNIT SIZE AT ROOF PENETRATION.
7. SUPPLY AND RETURN DUCTS ROUTED UP TO RTU-2. TRANSITION TO UNIT SIZE AT ROOF PENETRATION.
8. SUPPLY AND RETURN DUCTS ROUTED UP TO RTU-3. TRANSITION TO UNIT SIZE AT ROOF PENETRATION.
9. 10x10 EXHAUST DUCT UP FROM HOOD THRU ROOF TO EF-6. DUCT TO BE 16-GAUGE ALUMINUM AND WELDED AIR & LIQUID TIGHT. PROVIDE TRANSITION TO HOOD CONNECTION SIZE.
10. HIGH TEMPERATURE FIRE DAMPER (TYPICAL).
11. 24x14 GREASE EXHAUST DUCT UP FROM HOOD THRU ROOF TO EF-4. DUCT TO BE 16-GAUGE BLACK STEEL AND WELDED AIR & LIQUID TIGHT. GREASE EXHAUST DUCT SHALL BE SLOPED TOWARD HOOD AND ENCASED IN FIRE RATED ENCLOSURE OR APPROVED FIRE WRAP PER LOCAL CODE. PROVIDE TRANSITION TO HOOD CONNECTION SIZE.
12. 12x14 GREASE EXHAUST DUCT UP FROM HOOD THRU ROOF TO EF-5. DUCT TO BE 16-GAUGE BLACK STEEL AND WELDED AIR & LIQUID TIGHT. GREASE EXHAUST DUCT SHALL BE SLOPED TOWARD HOOD AND ENCASED IN FIRE RATED ENCLOSURE OR APPROVED FIRE WRAP PER LOCAL CODE. PROVIDE TRANSITION TO HOOD CONNECTION SIZE.
13. SUPPLY DUCT ROUTED UP TO MUA-1. TRANSITION TO UNIT SIZE AT ROOF PENETRATION.
14. 1-1/2" CD ROUTED DOWN IN WALL TO FLOOR DRAIN.
15. 10x10 GREASE EXHAUST DUCT UP FROM HOOD THRU ROOF TO EF-2. DUCT TO BE 16-GAUGE BLACK STEEL AND WELDED AIR & LIQUID TIGHT. GREASE EXHAUST DUCT SHALL BE SLOPED TOWARD HOOD AND ENCASED IN FIRE RATED ENCLOSURE OR APPROVED FIRE WRAP PER LOCAL CODE. PROVIDE TRANSITION TO HOOD CONNECTION SIZE.
16. 6" FLUE ROUTED UP TO ROOF. PROVIDE CAP, COLLAR AND FLASH.
17. 4" EXHAUST FLUE DOWN TO WATER HEATER.
18. 4" EXHAUST FLUE UP TO ROOF. PROVIDE CAP, COLLAR AND FLASH.
19. REFERENCE KITCHEN CONSULTANT'S DRAWINGS FOR COOLER/FREEZER INFORMATION.
20. 4" COMBUSTION AIR DUCT DOWN TO WATER HEATER.
21. 4" COMBUSTION AIR DUCT UP TO ROOF. PROVIDE CAP, COLLAR AND FLASH.

COORDINATION NOTES (APPLIES TO THIS SHEET ONLY)

1. CONTRACTOR SHALL VISIT THE SITE PRIOR TO BIDDING AND START OF CONSTRUCTION AND SHALL NOTIFY THE ARCHITECT OR ENGINEER OF ANY CONFLICTS OR DISCREPANCIES WITH THE DRAWINGS. ANY REQUIRED MODIFICATIONS NOT IDENTIFIED UNTIL START OF CONSTRUCTION SHALL BE MADE AT NO ADDITIONAL COST TO THE OWNER.
2. CONTRACTOR SHALL COORDINATE EXACT THERMOSTAT LOCATIONS WITH OWNER PRIOR TO INSTALLATION.
3. CONTRACTOR SHALL ROUTE SUPPLY DUCTS TIGHT TO DECK, TYP.
4. CONTRACTOR SHALL COORDINATE ALL KITCHEN EQUIPMENT WITH OWNER AND VERIFY DUCT SIZE AND REQUIREMENTS IF DIFFERENT FROM MECHANICAL PLANS.
5. CONTRACTOR SHALL SEAL ALL ROOF PENETRATIONS AIR AND WATER TIGHT.



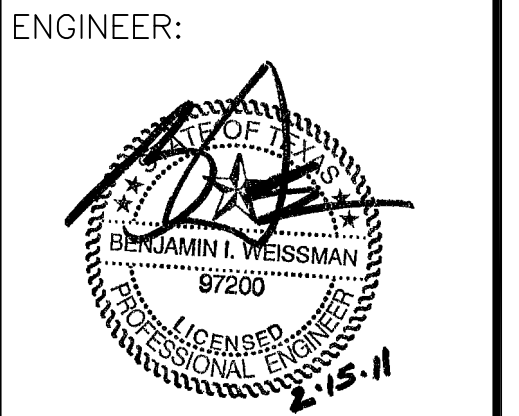
1 FLOOR PLAN
SCALE: 1/4" = 1'-0"

JSE Jordan & Skala Engineers
11231 Richmond Ave., Suite 0104
Houston, TX 77062
V: (281) 617-3200 F: (281) 617-3207
Project Number - 106-0634 Texas Firm Registration # F-4990
Drawn By: JSE Checked By: JSE

**CISNEROS DESIGN STUDIO,
ARCHITECTS LLC**
4621 Montrose Blvd. Suite B220 Houston, Texas 77006
(PH) 713-520-7745 (FAX) 713-520-8894
COPYRIGHT 2011
CISNEROS DESIGN STUDIO ARCHITECTS, LLC
The drawings and specifications are the property of the Architect. They are not to be used on other projects or in any way without the written consent of the Architect. The Contractor is responsible for obtaining all necessary permits for construction means, methods, techniques, materials or procedures, or for safety precautions and programs in connection with the project.

DAMICO'S RESTAURANT
2802 WHITE OAK, SUITE 500
HOUSTON, TX 77007

ARCHITECT:



REVISIONS:

DATE ISSUED: 15 FEB. 2011
SHEET:
FLOOR PLAN
M-2.0