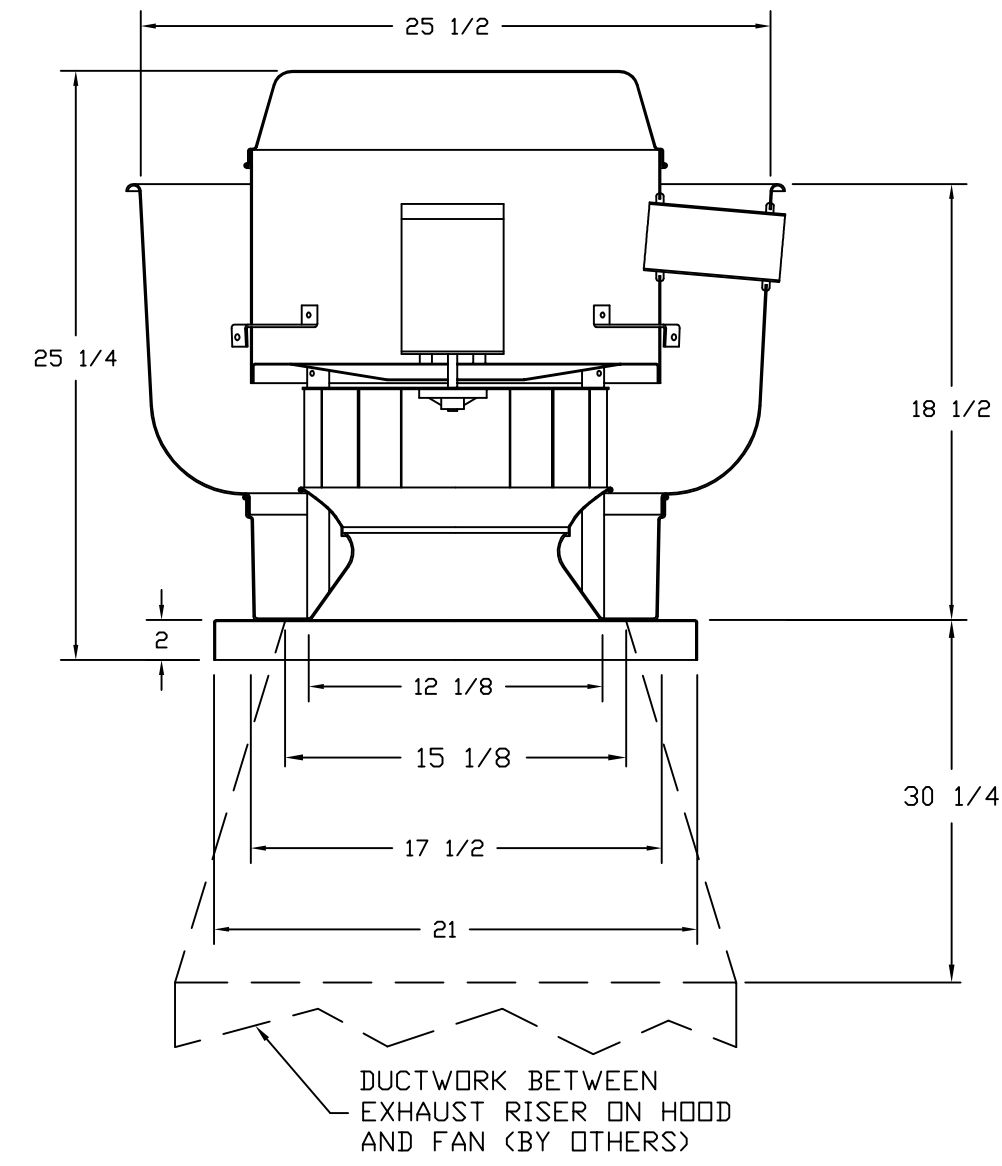


FAN #7_DU30HFA - EXHAUST FAN



FEATURES:

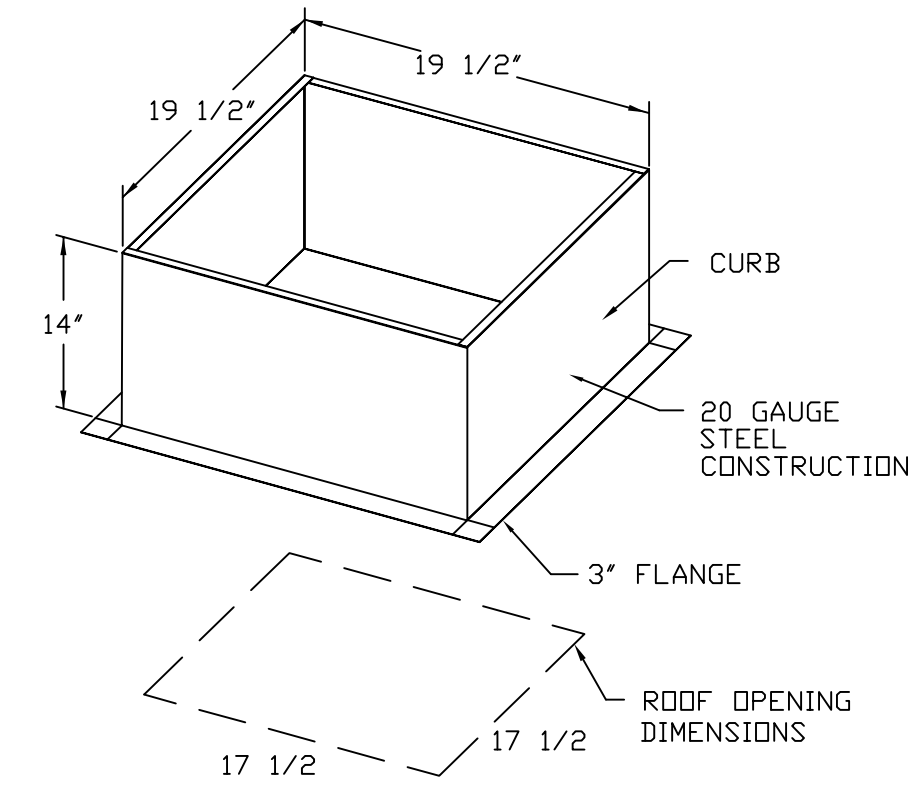
- ROOF MOUNTED FANS
- RESTAURANT MODEL
- UL705 AND UL762
- VARIABLE SPEED CONTROL
- INTERNAL WIRING
- WEATHERPROOF DISCONNECT
- THERMAL OVERLOAD PROTECTION (SINGLE PHASE)
- HIGH HEAT OPERATION 300°F (149°C)
- GREASE CLASSIFICATION TESTING

NORMAL TEMPERATURE TEST
EXHAUST FAN MUST OPERATE CONTINUOUSLY WHILE EXHAUSTING AIR AT 300°F (149°C) UNTIL ALL FAN PARTS HAVE REACHED THERMAL EQUILIBRIUM, AND WITHOUT ANY DETERIORATING EFFECTS TO THE FAN WHICH WOULD CAUSE UNSAFE OPERATION.

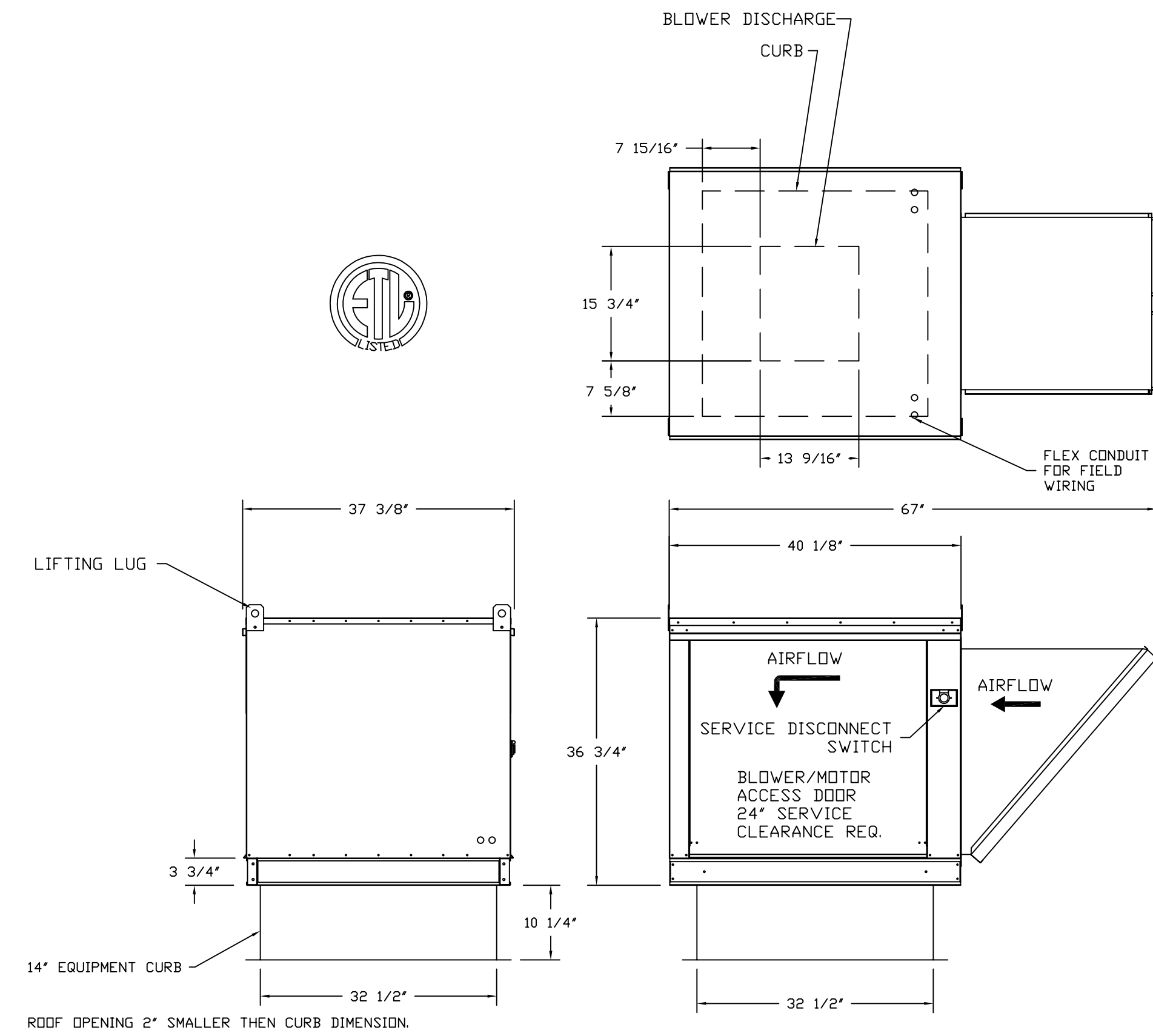
ABNORMAL FLARE-UP TEST
EXHAUST FAN MUST OPERATE CONTINUOUSLY WHILE EXHAUSTING BURNING GREASE VAPORS AT 600°F (316°C) FOR A PERIOD OF 15 MINUTES WITHOUT THE FAN BECOMING DAMAGED TO ANY EXTENT THAT COULD CAUSE AN UNSAFE CONDITION.

OPTIONS

MOTORIZED 1 15 BDD 120/240V



FAN #3_NSAU2-G12 - SUPPLY FAN
1. SUPPLY UNIT WITH 12" BLOWER IN SIZE #2 HOUSING
2. INTAKE HOOD WITH EZ FILTERS
3. DOWN DISCHARGE - AIR FLOW RIGHT -> LEFT
4. MOTORIZED BACK DRAFT DAMPER 22" X 24", STANDARD GALVANIZED CONSTRUCTION, 1 1/4" REAR FLANGE, WITH H-2000A/B MOTOR, WALL SUPPLY MOUNT, FOR SIZE 2 UNTEMPERED FAN HOUSING (S192)



FAN #5_NSAU1-G10 - SUPPLY FAN
1. SUPPLY UNIT WITH 10" BLOWER IN SIZE #1 HOUSING
2. INTAKE HOOD WITH EZ FILTERS
3. DOWN DISCHARGE - AIR FLOW RIGHT -> LEFT
4. MOTORIZED BACK DRAFT DAMPER 16" X 18", STANDARD GALVANIZED CONSTRUCTION, 1 1/4" REAR FLANGE, WITH H-2000A/B MOTOR, WALL SUPPLY MOUNT, FOR SIZE 1 UNTEMPERED FAN HOUSING (S191)

