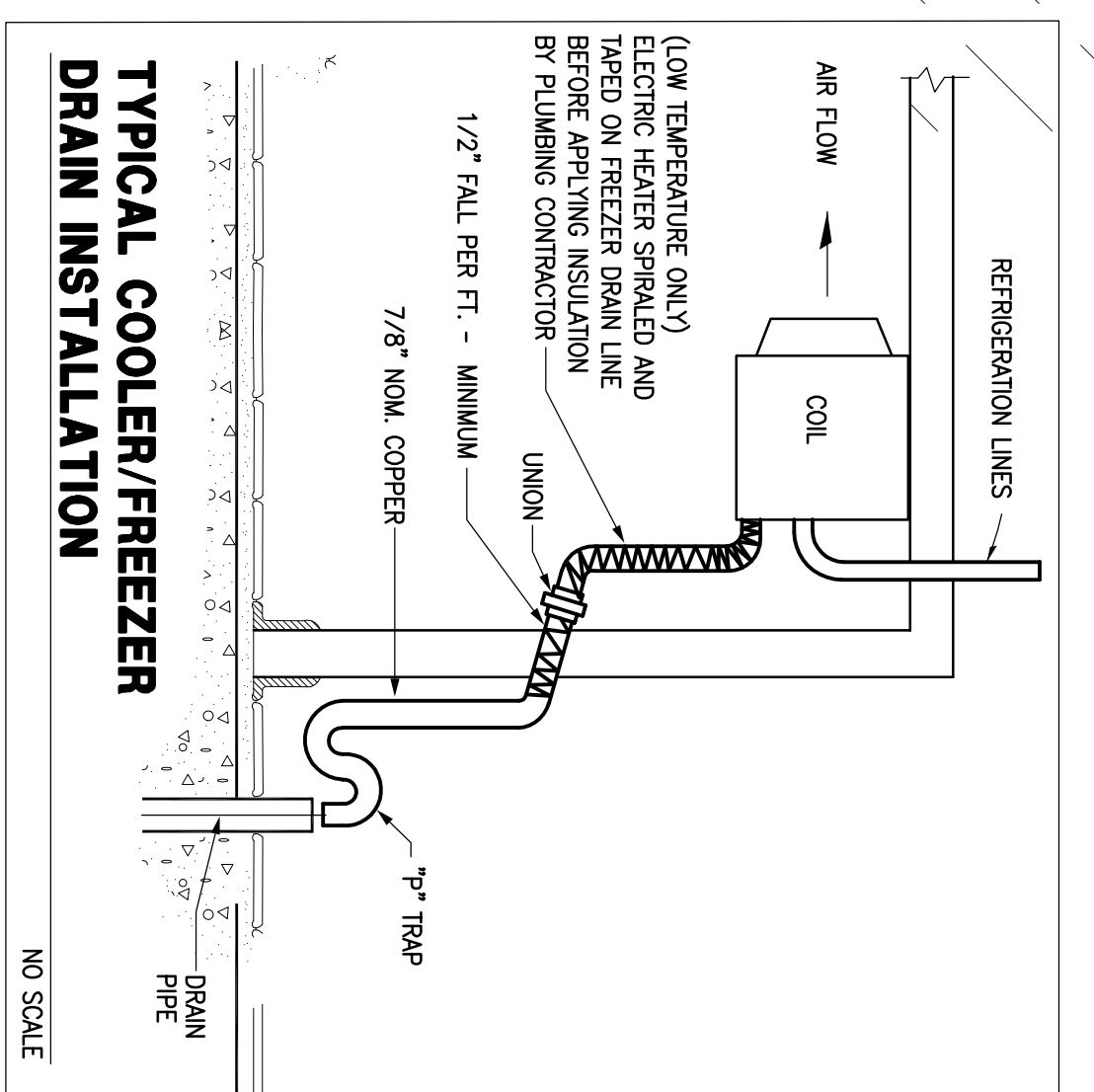


ISSUE  
02/28/12  
ISSUED FOR PERMIT  
AND PRICING

### PLUMBING CONTRACTOR NOTES

- A. ALL WORK TO BE IN COMPLIANCE WITH PREVALUING CODES.
- B. VERIFY W/ ARCHITECT AND/OR OWNER FOR ANY PLUMBING CONNECTIONS FOR EQUIPMENT NOT SHOWN OR SUPPLIED BY STRATEGIC EQUIPMENT.
- C. ALL DRAIN LINES TO BE TRAPPED. PLUMB. CONTR. TO SUPPLY ALL INDIRECT LINES WITH A TRAP AND AN AIR GAP AT FLOOR RECEIPT/AE. (AIR GAP TO BE A MIN. OF 2 TIMES THE DIA. OF THE WASTE LINE)
- D. INSULATE 1/4" OF OR HIGHER WATER LINES RUNNING FROM WATER HEATER TO FINAL HOOKUP ON EQUIPMENT.
- E. PLUMBING CONTRACTOR TO MOUNT ALL DISPOSERS, FAUCETS, BRACKET DRAINS, LEVER DRAINS, TO/ON KITCHEN EQUIPMENT WITH FINAL CONNECTION TO ROUGH-IN(S) AFTER EQUIPMENT IS SET IN PLACE.
- F. ALL PLUMBING CONNECTION HEIGHTS ARE TO CENTER LINE.
- G. COOKING EQUIPMENT GAS PRESSURE TO BE 7-1/4" W.C. FOR NATURAL GAS AND 10" W.C. FOR LP GAS UNLESS NOTED OTHERWISE.
- H. GAS QUICK DISCONNECTS AND SLOTTED VALVES TO BE SUPPLIED BY STRATEGIC EQUIPMENT FOR INSTALLATION BY DIV. #15.
- I. TO BE INTERCONNECTED WITH FIRE PROTECTION SYSTEM FOR FUEL SHUT-DOWN TO EQUIPMENT BELOW HOOD. FSES TO PROVIDE FIRE SYSTEM GAS VALVE INSTALLED BY P.C. VERIFY VALVE SIZE.
- J. SINK FAUCETS AND SINK DRAINS ARE FURNISHED LOOSE. FOR INSTALLATION BY PLUMB. CONTRACTOR. (TRIM AND COMPLETE ALL FINAL PLUMBING CONNECTIONS AS REQUIRED).
- K. ALL CONNECTION NUMBERS DIMENSIONED ON THIS PLAN ARE ROUGH-IN LOCATIONS. THE SIZE SHOWN IN THE SCHEDULE AND DESCRIPTION ARE THE CONNECTIONS FOR THAT PIECE OF EQUIPMENT.
- L. SIZES OF ROUGH-INS ARE TO BE DETERMINED BY PLUMB. CONTR. K. PLUMB. CONTR. TO PROVIDE AND INSTALL A "WATS 90" (OR EQUAL) CHECK VALVE ON CARBONATOR SUPPLY INLET LINES.
- M. PLUMB. CONTR. TO PROVIDE ALL NECESSARY SHUT-OFF VALVES, BACKFLOW PREVENTION DEVICES, PRESSURE REGULATORS, ETC.; AHEAD OF EQUIPMENT CONTROL VALVE, UNLESS NOTED.
- N. PLUMB. CONTR. TO MAKE ADJUSTMENTS IN ROUGH-IN LOCATIONS FOR BEAMS, FOOTINGS AND ETC. IF REQUIRED.
- O. PLUMBING CONTR. TO PROVIDE AND INSTALL WATER HAMMER ARRESTORS AND PRESSURE REDUCING VALVES (PRV) IN LINE BEFORE ALL SLOTTED VALVES (E. AT DISHWASHER, DISPOSER(S), ICE MAKER(S), STEAMERS), ETC.
- P. (PLUMB. CONTR. TO PROVIDE AND INSTALL ALL INDIRECT WASTE (LOW TEMPERATURE ONLY) ELECTRIC HEATER SPRAYED AND TAPPED ON FREEZER DRAIN LINE BEFORE APPLYING INSULATION BY PLUMBING CONTRACTOR.
- Q. VERIFY W/ HEALTH AND PLUMBING CODES IF WASTES SHOULD BE DIRECT OR INDIRECT. VERIFY IF CLEAN WATER WASTES ARE REQD TO EMIT INTO STORED SEWERS.
- R. VERIFY AND/OR LOCATE GREASE TRAP PER LOCAL CODE AND CONNECT SINKS AS REQUIRED.

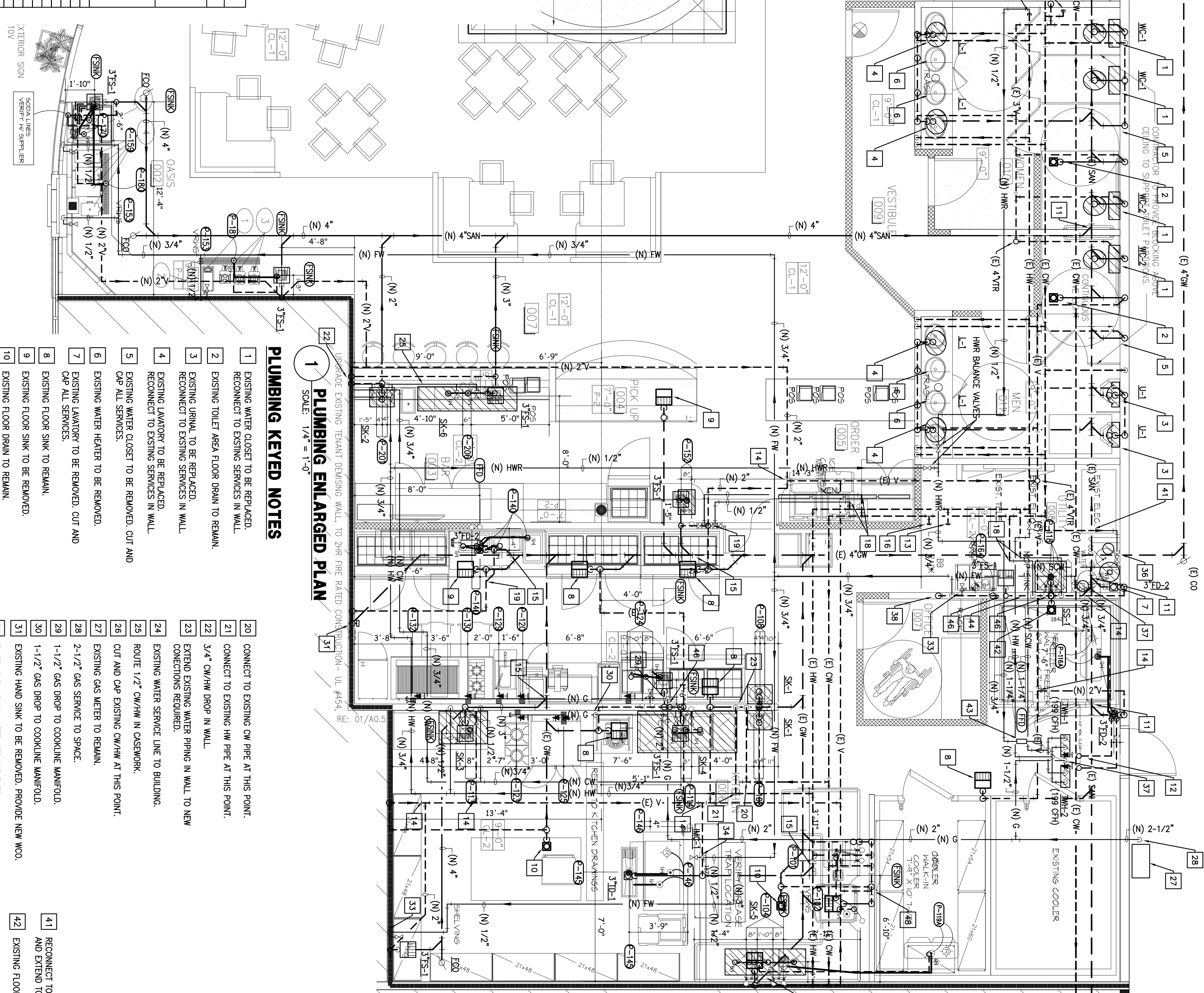
### TYPICAL COOLER/FREEZER DRAIN INSTALLATION



### PLUMBING KEYED NOTES

- 1 EXISTING WATER CLOSET TO BE REPLACED. RECONNECT TO EXISTING SERVICES IN WALL.
- 2 EXISTING TOILET AREA FLOOR DRAIN TO REMAIN.
- 3 EXISTING URINAL TO BE REPLACED. RECONNECT TO EXISTING SERVICES IN WALL.
- 4 EXISTING LAVATORY TO BE REPLACED. RECONNECT TO EXISTING SERVICES IN WALL.
- 5 EXISTING WATER CLOSET TO BE REMOVED. CUT AND CAP ALL SERVICES.
- 6 EXISTING WATER HEATER TO BE REMOVED. CAP ALL SERVICES.
- 7 EXISTING LAVATORY TO BE REMOVED. CUT AND CAP ALL SERVICES.
- 8 EXISTING FLOOR SINK TO REMAIN.
- 9 EXISTING FLOOR SINK TO BE REMOVED.
- 10 EXISTING FLOOR DRAIN TO REMAIN.
- 11 CUT AND CAP EXISTING WASTE AT THIS POINT.
- 12 ROUTE WATER HEATER DRAIN LINES TO FLOOR DRAIN.
- 13 CUT AND CAP EXISTING HW AT THIS POINT.
- 14 CONNECT TO EXISTING VENT PIPING AT THIS POINT.
- 15 CONNECT TO EXISTING GREASE WASTE PIPING AT THIS POINT.
- 16 CUT AND CAP EXISTING CW/HW AT THIS POINT.
- 17 CUT AND CAP EXISTING GREASE WASTE AT THIS POINT. EXTEND TO NEW/RELOCATED FURNITURE INDICATED.
- 18 CONNECT TO EXISTING 1/2" CW/HW AT THIS POINT AND EXTEND TO NEW/RELOCATED FURNITURE INDICATED.
- 19 CONNECT TO EXISTING UNDERFLOOR VENT PIPING AND EXTEND/REMOVE TO WALL AS INDICATED.
- 20 CONNECT TO EXISTING CW PIPE AT THIS POINT.
- 21 CONNECT TO EXISTING HM PIPE AT THIS POINT.
- 22 3/4" CW/HW DROP IN WALL.
- 23 EXTEND EXISTING WATER PIPING IN WALL TO NEW CONNECTIONS REQUIRED.
- 24 EXISTING WATER SERVICE LINE TO BUILDING.
- 25 ROUTE 1/2" CW/HW IN CASSWORK.
- 26 CUT AND CAP EXISTING CW/HW AT THIS POINT.
- 27 EXISTING GAS WATER TO REMAIN.
- 28 2-1/2" GAS SERVICE TO SPACE.
- 29 1-1/2" GAS DROP TO COOKLINE MANIFOLD.
- 30 1-1/2" GAS DROP TO COOKLINE MANIFOLD.
- 31 EXISTING HAND SINK TO BE REMOVED. PROVIDE NEW WOO.
- 32 EXISTING BUILDING WATER SERVICE ENTRY.
- 33 VALVED 1/2" FM FOR BAG AND BOX SYSTEM.
- 34 VALVED 1/2" FM FOR ICE MACHINE.
- 35 WATER FILTER SYSTEM TO BE PROVIDED BY TENANT. PROVIDE VALVES AND FULL SIZE 3/4" VALVED BRASS.
- 36 WATER SOFTENER SYSTEM TO BE PROVIDED BY TENANT. PROVIDE VALVES AND FULL SIZE 1-1/4" VALVED BYPASS.
- 37 1-1/2" GAS UP THRU ROOF WITH 1-1/4" GAS CONNECTION TO EACH WATER HEATER.
- 38 EXISTING SINK TO BE REMOVED. CUT AND CAP ALL SERVICES.
- 39 EXISTING SANITARY SEWER. REFER TO SITE PLAN.
- 40 EXISTING GREASE WASTE. REFER TO SITE PLAN.

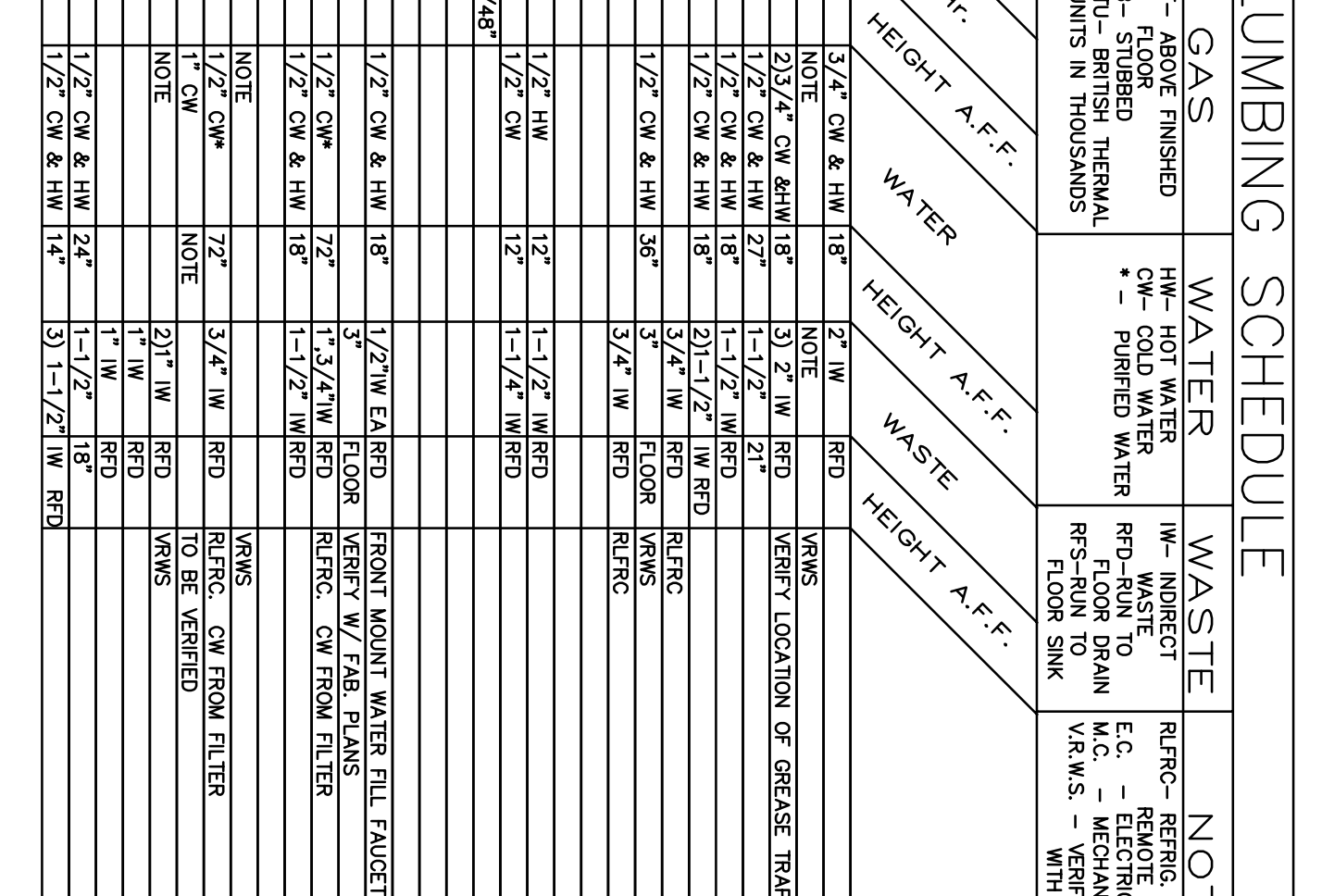
### PLUMBING ENLARGED PLAN



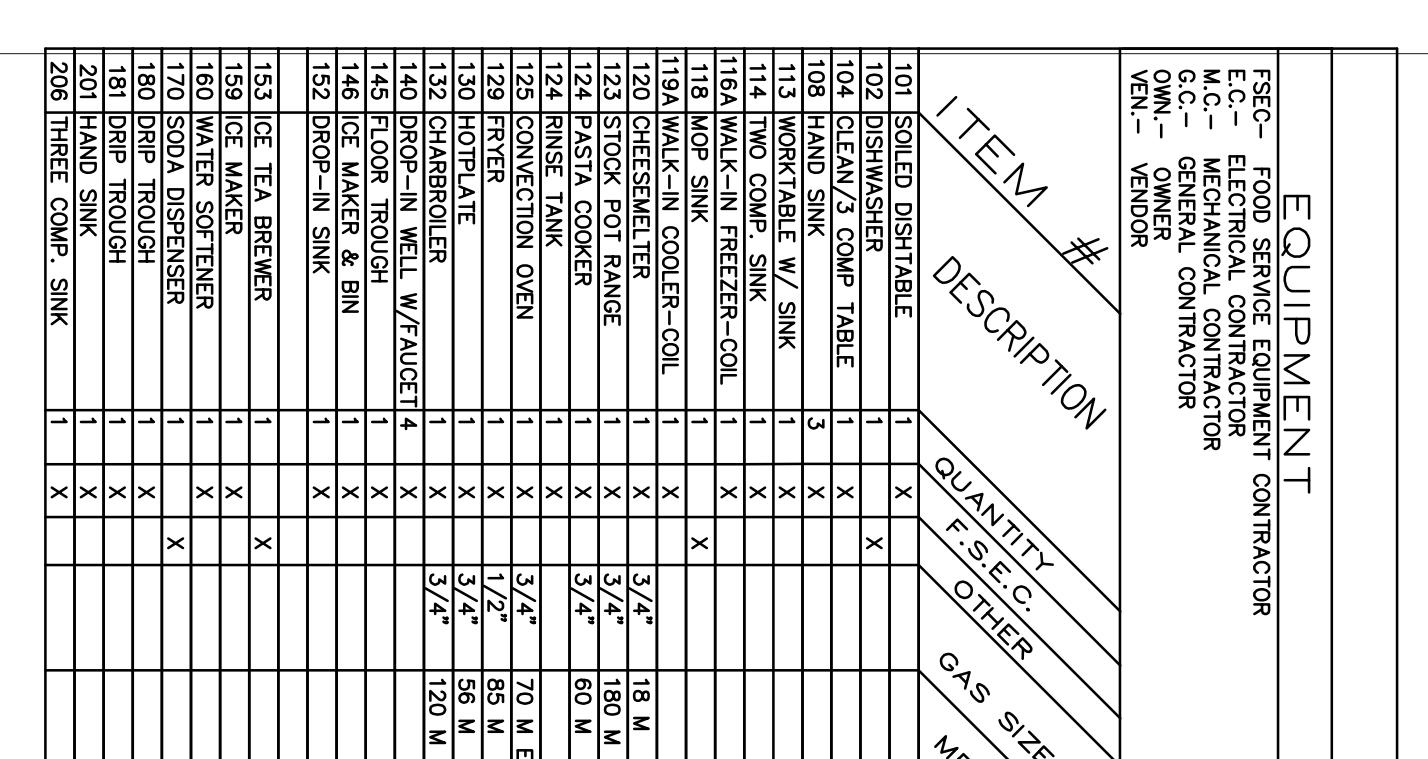
### PLUMBING SCHEDULE

ITEM #	DESCRIPTION	QUANTITY	F.S.E.C.	OTHER	GAS SIZE		WATER		WASTE		NOTES
					MBTU/Hr.	HEIGHT A.F.F.	HEIGHT A.F.F.	HEIGHT A.F.F.			
100	ESSEX DISHWASHER	1	X		3/4" CW & HW	18"	1/2" HW	1/2" W	1/2" W	1/2" W	RELOC. REFRIG. LINE FROM E.C. - MECHANICAL CONTRACTOR WITH SUPPLIER.
104	CLEAN/3 COMP TABLE	1	X		2 1/2" CW & HW	18"	3/4" W	3/4" W	3/4" W	3/4" W	VERIFY LOCATION OF GREASE TRAP.
106	HAND SINK	1	X		1/2" CW & HW	27"	1-1/2" W	1-1/2" W	1-1/2" W	1-1/2" W	
113	WATERKRAVE W/ SINK	1	X		1/2" CW & HW	18"	1-1/2" W	1-1/2" W	1-1/2" W	1-1/2" W	
114	2" COMP. SINK	1	X		1/2" CW & HW	18"	2 1/2" W	2 1/2" W	2 1/2" W	2 1/2" W	
118	MPC SINK	1	X		1/2" CW & HW	36"	3/4" W	3/4" W	3/4" W	3/4" W	
119A	MALKIN COOLER-COIL	1	X		1/2" CW & HW	72"	3/4" W	3/4" W	3/4" W	3/4" W	
120	DISHWASHER	1	X		3/4" CW & HW	18"	1/2" W	1/2" W	1/2" W	1/2" W	
123	STOVE	1	X		1/2" CW & HW	18"	1-1/2" W	1-1/2" W	1-1/2" W	1-1/2" W	
124	FRIDGE	1	X		1/2" CW & HW	18"	1-1/2" W	1-1/2" W	1-1/2" W	1-1/2" W	
125	CONNECTION OVEN	1	X		1/2" CW & HW	18"	1-1/2" W	1-1/2" W	1-1/2" W	1-1/2" W	
129	FRYER	1	X		1/2" CW & HW	18"	1-1/2" W	1-1/2" W	1-1/2" W	1-1/2" W	
130	HOPPER	1	X		1/2" CW & HW	18"	1-1/2" W	1-1/2" W	1-1/2" W	1-1/2" W	
145	BRP-IN WALL W/ FAUCET	1	X		1/2" CW & HW	18"	1-1/2" W	1-1/2" W	1-1/2" W	1-1/2" W	FRONT MOUNT WATER FILL FAUCET. VALVE CONTROL.
146	ICE MAKER & BIN	1	X		1/2" CW & HW	18"	1-1/2" W	1-1/2" W	1-1/2" W	1-1/2" W	FRONT MOUNT WATER FILL FAUCET. VALVE CONTROL.
152	BRP-IN SINK	1	X		1/2" CW & HW	18"	1-1/2" W	1-1/2" W	1-1/2" W	1-1/2" W	
153	ICE TEA BREWER	1	X		1/2" CW	72"	3/4" W	3/4" W	3/4" W	3/4" W	
159	ICE MAKER	1	X		1/2" CW	72"	3/4" W	3/4" W	3/4" W	3/4" W	
170	SOFA DISPENSER	1	X		1/2" CW	72"	3/4" W	3/4" W	3/4" W	3/4" W	
180	BAKING ROUGH	1	X		1/2" CW	72"	3/4" W	3/4" W	3/4" W	3/4" W	
180	BAKING ROUGH	1	X		1/2" CW	72"	3/4" W	3/4" W	3/4" W	3/4" W	
201	HAND SINK	1	X		1/2" CW & HW	24"	1-1/2" W	1-1/2" W	1-1/2" W	1-1/2" W	
205	THREE COMP. SINK	1	X		1/2" CW & HW	14"	3/4" W	3/4" W	3/4" W	3/4" W	

### PLUMBING LEGEND



### STANDARD GAS QUICK DISCONNECT INSTALLATION



### VERIFY AND REUSE EXISTING PLUMBING AND FLOOR DRAINS/SINKS WHEN AVAILABLE.

VERIFY AND REUSE EXISTING PLUMBING AND FLOOR DRAINS/SINKS WHEN AVAILABLE.

### PLUMBING SPECIAL NOTES

1. ALL ABOVE GRADE EXISTING PIPING INDICATED IS SHOWN FOR REFERENCE ONLY. CONTRACTOR SHALL FIELD VERIFY EXACT LOCATION, SIZE AND DEPTH OF ALL EXISTING UTILITIES.
2. ALL BELOW GRADE EXISTING PIPING INDICATED IS APPROXIMATE. CONTRACTOR SHALL FIELD VERIFY EXACT LOCATION, SIZE AND DEPTH OF ALL EXISTING UTILITIES.
3. ALL EXISTING PIPING ABOVE THE SLAB THAT IS NOT REUSED SHALL BE REMOVED. CUT AND CAP ALL LINES BACK TO IN PLACE.
4. ALL EXISTING PIPING BELOW THE SLAB THAT IS NOT REUSED SHALL BE CUT AND CAPPED BELOW THE SLAB.

PLUMBING CONTRACTOR NOTES

PLUMBING KITCHEN PLAN

P1.2

Harrell Architects, LP  
9872 Katy Fwy., #200  
Houston, Texas 77024  
Tel: 713.722.2071  
Fax: 713.722.2072

Cafe Express Restaurant  
1111 Eldorado Parkway #100  
Houston, Texas 77077