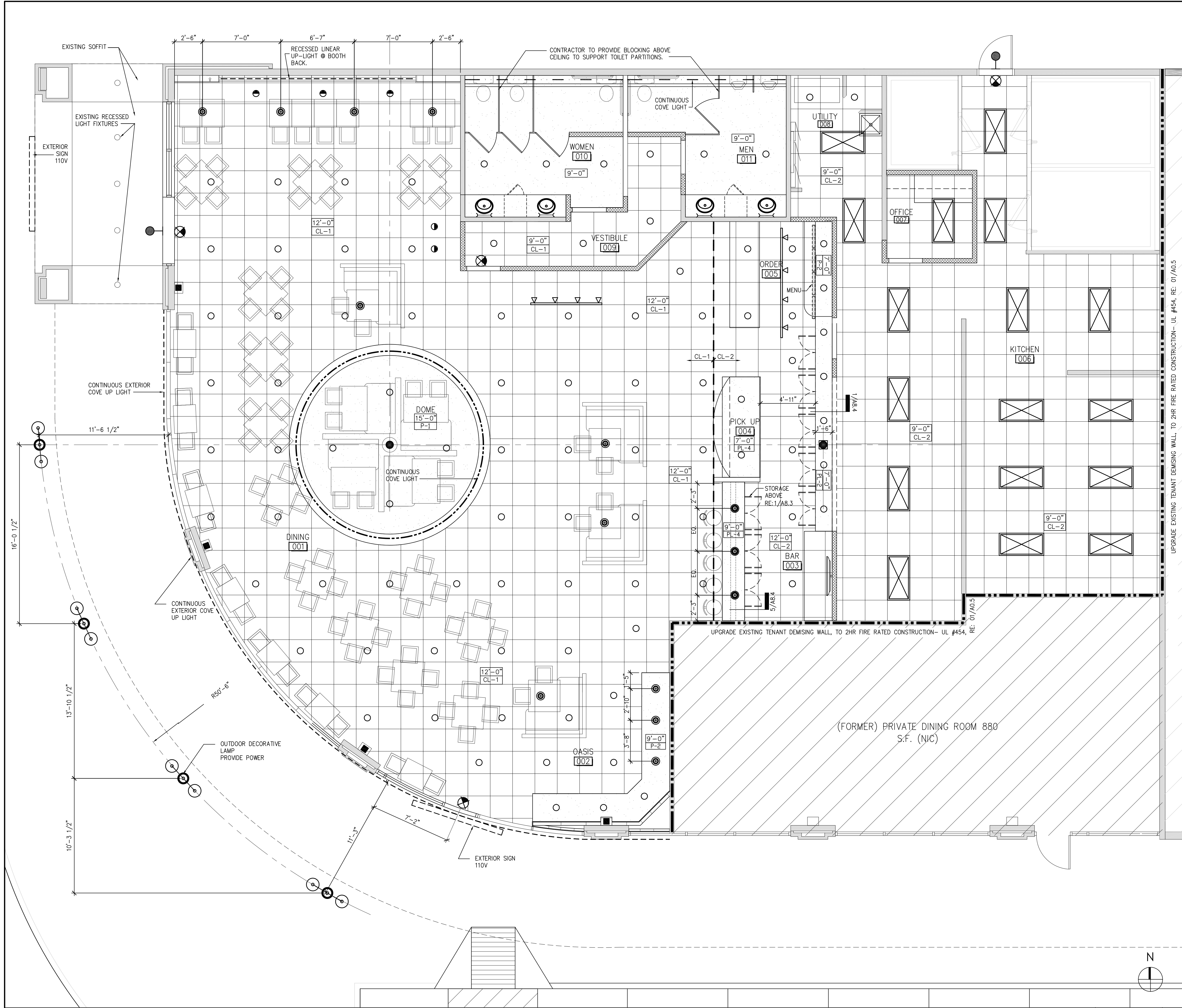


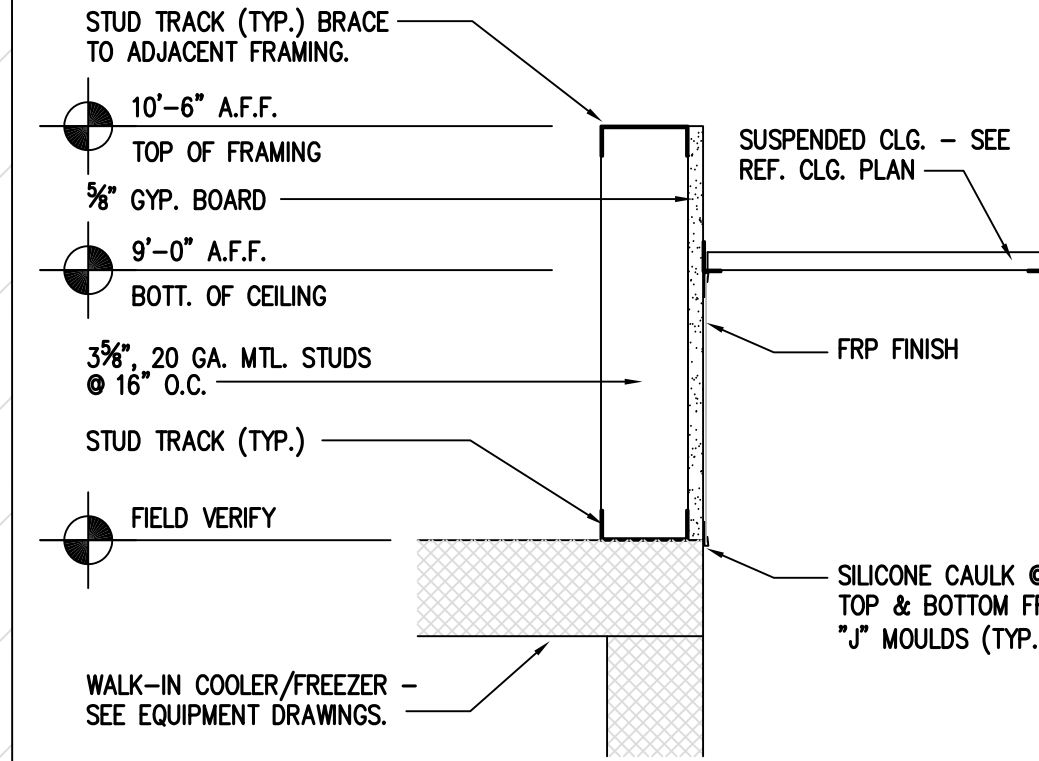


ISSUE
 02-27-12 LANDLORD REVIEW
 02-28-12 FOR PERMIT & PRICING



- 2x4 RECESSED FLUORESCENT LIGHT FIXTURE
- EXTERIOR LED COVE FIXTURE - GREEN COLOR
- LED COVE FIXTURE - BLUE COLOR
- COVE LIGHT FIXTURE - RESTROOMS PRUDENTIAL LIGHTING - P801 (COVE & PERIMETER)
- TRACK LIGHT FIXTURE
- VANITY WALL SCONCE
- PENDANT LIGHT
- EMERGENCY LIGHT
- EXIT LIGHT WITH DIRECTIONAL ARROWS AS REQUIRED. RE: ELECTRICAL DRAWINGS.
- RECESSED DOWNLIGHT
- RECESSED DIRECTIONAL DOWNLIGHT
- EMERGENCY POWERED EXTERIOR SCONCE
- 2x2 LAY-IN CEILING TILE
- GYP. BOARD CEILING
- EXTERIOR LIGHT POLE

LEGEND



SOFFIT DETAIL 1-1/2" = 1'-0" 2

GENERAL NOTES

HARRELL ARCHITECTS, L.P.

9575 Katy Frwy., #200
 Houston, Texas 77024
 tel: 713.722.7071
 fax: 713.722.7072

CONSULTANTS
 Holste & Associates, Inc.
 MEP Engineers

PROJECT NAME



Cafe Express Restaurant

PROJECT ADDRESS
 1111 Eldridge Parkway #100
 Houston, Texas 77077

PROJECT NUMBER
 11052

SHEET NAME
 REFLECTED CEILING PLAN

SHEET NUMBER

PROJECT NUMBER

SHEET NUMBER

A3.1