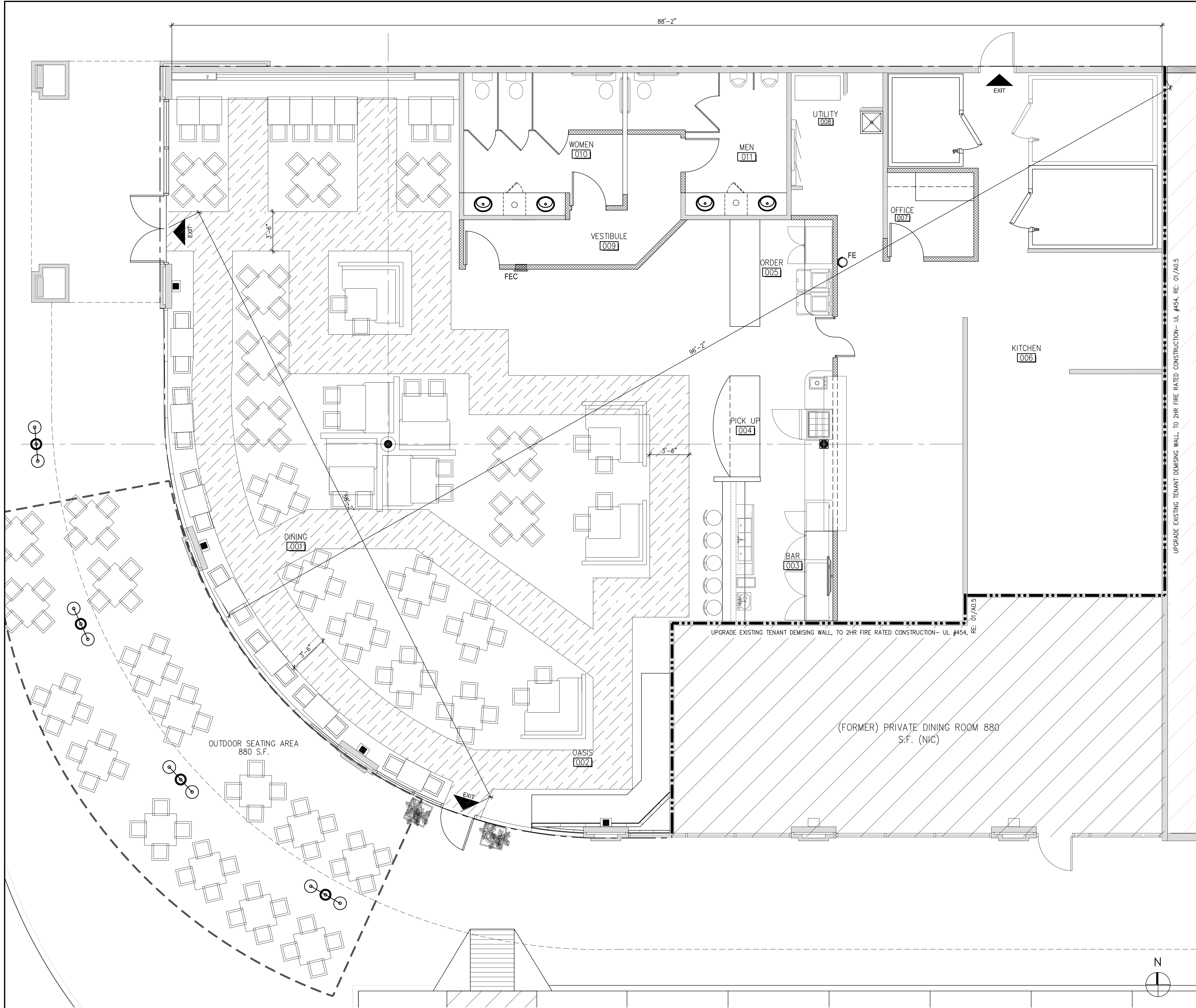
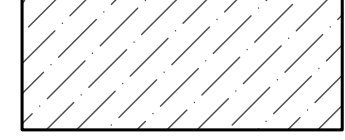







ISSUE  
02-27-12 LANDLORD REVIEW  
02-28-12 FOR PERMIT & PRICING



-  PATH OF EGRESS = 42" WIDE
-  EXIT
-  FEC FIRE EXTINGUISHER CABINET
-  FE WALL-MOUNTED FIRE EXTINGUISHER

### LEGEND

1. REFER TO GENERAL INFORMATION SHEET A0.0 FOR OCCUPANT LOAD AND EGRESS CALCULATIONS.
2. FIRE EXTINGUISHERS: COMPLY WITH PRODUCT REQUIREMENTS OF NFPA 10 AND APPLICABLE CODES, WHICHEVER IS MORE STRINGENT.
  1. TYPE FE: DRY CHEMICAL TYPE FIRE EXTINGUISHERS: CAST STEEL TANK, WITH PRESSURE GAGE, CLASS A,B,C, SIZE 10.
3. FIRE EXTINGUISHER CABINETS (FEC).
  1. BOX: SEMI- RECESSED 20 GAGE COLD ROLLED STEEL WITH WHITE BAKED ENAMEL FINISH.
  2. TRIM: FLAT TRIM 1,3/4 INCHES WIDE BY 5/16 INCH (AT GYPSUM BOARD, MASONRY AND TILE SURFACES).
  3. DOOR: SOLID PANEL, 20 GAGE COLD ROLLED STEEL WITH WHITE BAKED ENAMEL FINISH, MANUFACTURER'S STANDARD LATCH, CONTINUOUS (PIANO TYPE) HINGE, VERTICAL LETTERING READING "FIRE EXTINGUISHER".

### GENERAL LIFE SAFETY NOTES



9575 Katy Frwy., #200  
Houston, Texas 77024  
tel: 713.722.7071  
fax: 713.722.7072

CONSULTANTS  
Holste & Associates, Inc.  
MEP Engineers

PROJECT NAME



Cafe Express Restaurant

PROJECT ADDRESS  
1111 Eldridge Parkway #100  
Houston, Texas 77077

PROJECT NUMBER  
11052

SHEET NAME

FLOOR LIFE SAFETY PLAN

SHEET NUMBER